



**GAMMA RAY
NEUTRON
COMPLETION LOG**

Company SOUTHWINDS ENERGY, LLC
Well SOUTH BUTCHER #4
Field PERU-SEDAN
County CHAUTAUQUA State KANSAS

Location: 895 FSL & 1475 FWL
SW 1/4 NW SE SW
APR #: 15-079-27216-00-00
Other Services

Permanent Datum Log Measured From
Dilling Measured From
Elevation 884 EST
K.A. D.T. 884 EST
G.L. 884 EST

Date 10-2-12
Run Number 1 NW
Depth Other 1310.9'

Depth Logger
Top Log Interval 0
Bottom Logged Interval 1310.9'
Fluid Level FULL

Type Fluid WATER
Production casing 4.5" @ TD
Max. Recorded Temp. @
Estimated Cement Top @
Amount & Type Cement @
Drilling Contractor
Equipment Number 109
Location SANGBORN, G
DANIS, A

Recorded By
Witnessed By

Company SOUTHWINDS ENERGY, LLC
Well SOUTH BUTCHER #4
Field PERU-SEDAN
County CHAUTAUQUA State KANSAS

<<< Fold Here >>>

All interpretations are opinions based on inferences from electrical or other measurements and we cannot and do not guarantee the accuracy or correctness of any interpretation, and we shall not, except in the case of gross or willful negligence on our part, be liable or responsible for any loss, costs, damages, or expenses incurred or sustained by anyone resulting from any interpretation made by any of our officers, agents or employees. These interpretations are also subject to our general terms and conditions set out in our current Price Schedule.

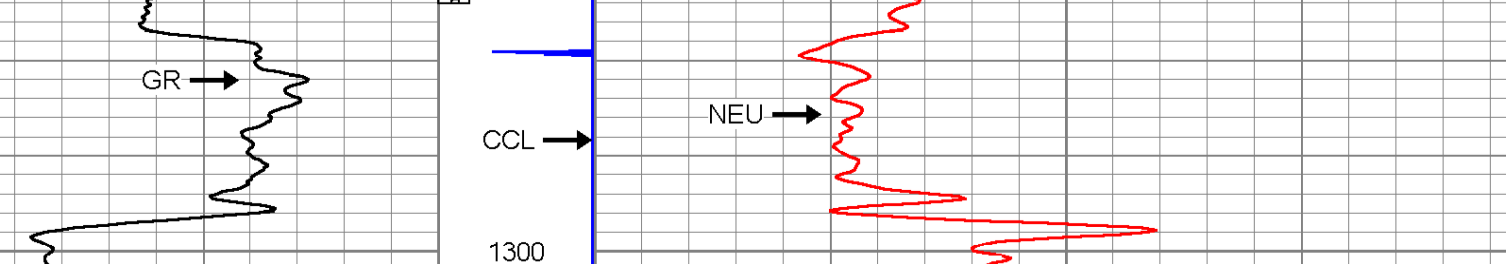
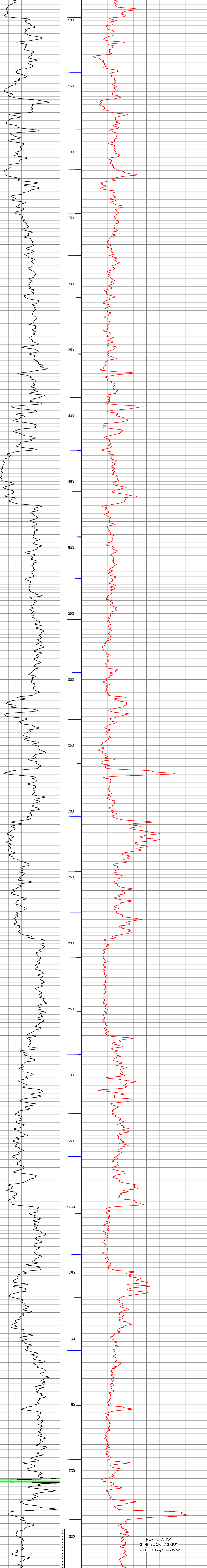
Comments

THANK YOU

Sensor	Offset (ft)	Schematic	Description	Len (ft)	OD (in)	Wt (lb)
GR	7.59		GR-TITAN_169 (TIT169_001) Titan 1 11/16" Gamma Ray	4.75	1.69	20.00
CCL	5.05		CCL-TITAN_169 (TIT169) Titan 1 11/16" Logging CCL	1.83	1.69	7.50
NEU	0.63		NEU-TITAN (TIT801) TITAN 1 11/16" Neutron	4.33	1.69	25.00

Dataset: s butcher #4.db; field/well/run1/pass1
Total Length: 10.92 ft
Total Weight: 52.50 lb
O.D.: 1.69 in

Database File: g:\s butcher #4.db
Dataset Pathname: pass1
Presentation Format: gr-n-ccl
Dataset Creation: Tue Oct 02 10:59:05 2012 by Log Std Casohole 09061
Charted by: Depth in Feet scaled 1:240



PERFORATION
3 1/8" SLICK TAG GUN
60 SHOTS @ 1244'-1274'

gr 300 3 CCL 0.05 100 NEU (cps) 1500