



MIDWEST SURVEYS
 LOGGING - PERFORATING - CONSULTING SERVICES
 P.O. Box 68, Osawatomie, KS 66064
 913 / 755 - 2128

GAMMA RAY / NEUTRON / CCL

File No. _____

Company **Sirius Energy Corporation**
 Well **Ewing "B" No. Q-11**
 Field **Bush City Shoesting**
 County **Anderson** State **Kansas**

Location **2708' FSL & 1879' FEL**
SW-SE-SW-NE

Sec. 13 Twp. 21s Rge. 20e
 Permanent Datum **GL** Elevation **NA**
 Log Measured From **GL** K.B. NA
 Drilling Measured From **GL** D.F. NA
 G.L. NA

Date	5-31-2012
Run Number	One
Depth Drier	726.0
Depth Logger	721.5
Bottom Logged Interval	720.5
Top Log Interval	20.0
Fluid Level	Full
Type Fluid	Water
Density / Viscosity	NA
Salinity - PPM Cl	NA
Max Recorded Temp	NA
Estimated Cement Top	0.0
Equipment No.	104
Recorded By	Gary Wondsch
Witnessed By	Randy Teter

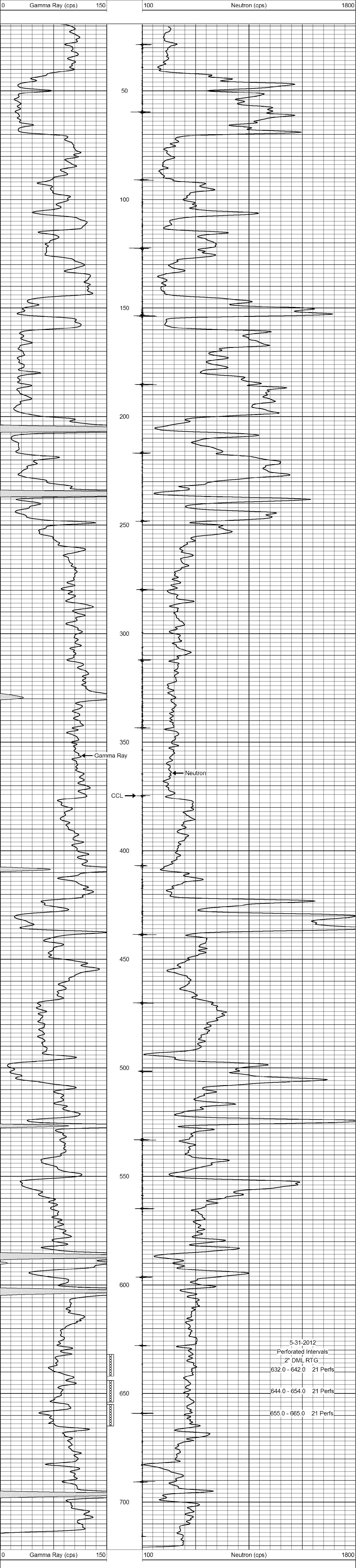
<<< Fold Here >>>

All interpretations are opinions based on inferences from electrical or other measurements and we cannot and do not guarantee the accuracy or correctness of any interpretation, and we shall not, except in the case of gross or willful negligence on our part, be liable or responsible for any loss, costs, damages, or expenses incurred or sustained by anyone resulting from any interpretation made by any of our officers, agents or employees. These interpretations are also subject to our general terms and conditions set out in our current Price Schedule.

Comments

Drilling Contractor :
John Leis Oilfield Services

Database File: ewing11qb.db
 Dataset Pathname: pass1
 Presentation Format: gr-n-ccl
 Dataset Creation: Thu May 31 11:57:45 2012 by Log SCH 111116
 Charted by: Depth in Feet scaled 1:240



5-31-2012
 Perforated Intervals
 2" DML RTG
 632.0 - 642.0 21 Perfs
 644.0 - 654.0 21 Perfs
 655.0 - 665.0 21 Perfs