



**GAMMA RAY  
NEUTRON  
COMPLETION LOG**

Company **McPHERSON DRILLING, LLC**  
 Well **W. REDD #11**  
 Field **NEODESHA**  
 County **WILSON** State **KANSAS**

Location: **AP# : 15-205-28010-00-00**  
**2805 FSL & 165 FEL**  
**SE SE SE NE**

Permanent Datum **G.L.** Elevation **853EST**  
 Log Measured From **G.L.**  
 Drilling Measured From **G.L.**

Date **5-3-2012**

Run Number **1 NW**

Depth Diller **928.9'**

Top Log Interval **600'**

Bottom Logged Interval **928.9'**

Fluid Level **FULL**

Type Fluid **WATER**

Production Casing **2 7/8" @ 939'**

Max. Recorded Temp. **@**

Estimated Cement Top **@**

Calculated Cement Top **@**

Amount & Type Cement **@**

Amount & Type Admix **@**

Drilling Contractor **COMPANY TOOLS**

Equipment Number **107**

Location **UDEN, D.**

Recorded By **McPHERSON R.**

<<< Fold Here >>>

All interpretations are opinions based on inferences from electrical or other measurements and we cannot and do not guarantee the accuracy or correctness of any interpretation, and we shall not, except in the case of gross or willful negligence on our part, be liable or responsible for any loss, costs, damages, or expenses incurred or sustained by anyone resulting from any interpretation made by any of our officers, agents or employees. These interpretations are also subject to our general terms and conditions set out in our current Price Schedule.

**Comments**

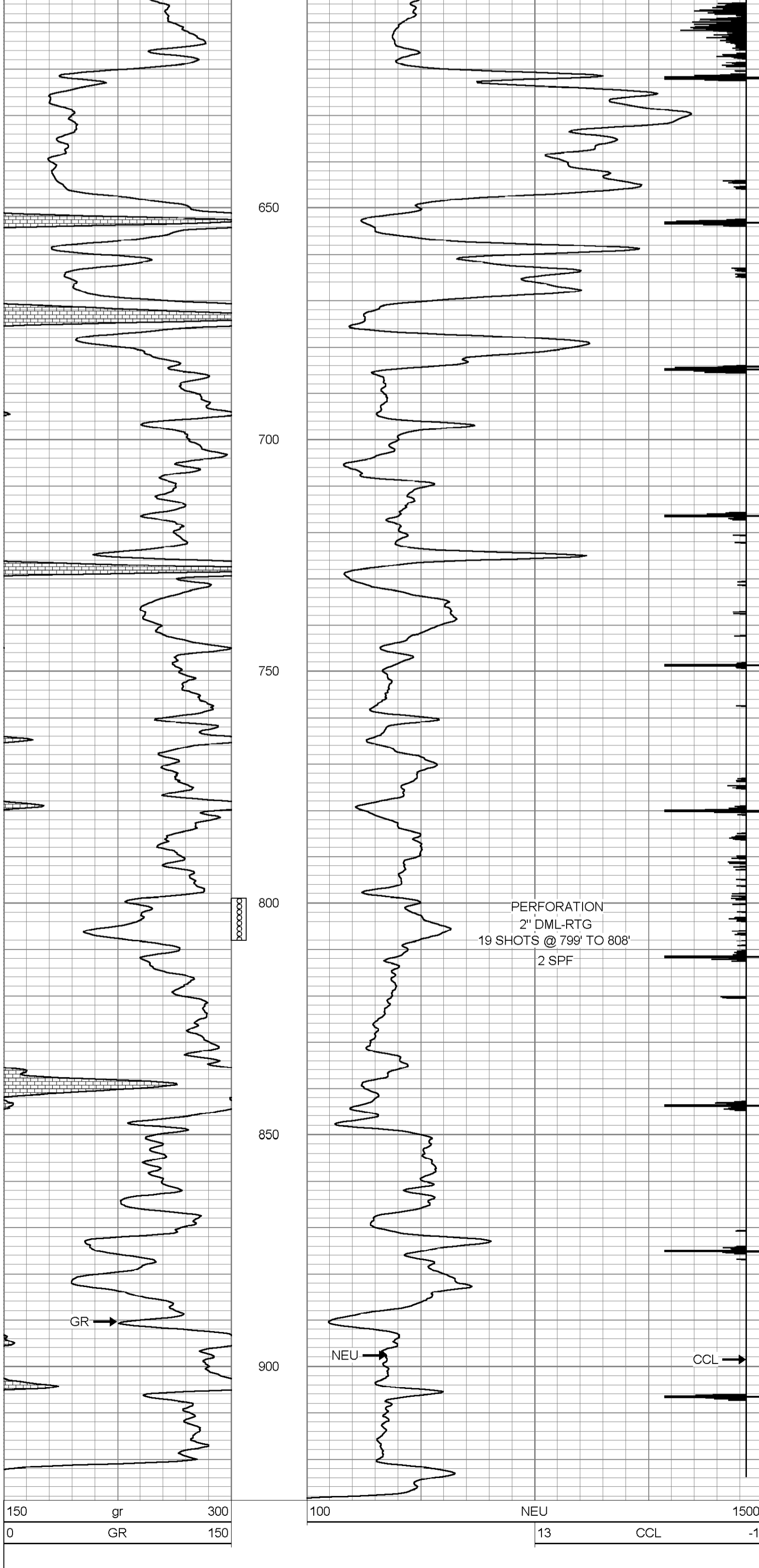
THANK YOU

Sensor	Offset (ft)	Schematic	Description	Len (ft)	OD (in)	Wt (lb)
GR	7.59		GR-TITAN_169 (TIT169_001) Titan 1 11/16" Gamma Ray	4.75	1.69	20.00
CCL	5.05		CCL-TITAN_169 (TIT169) Titan 1 11/16" Logging CCL	1.83	1.69	7.50
NEU	0.63		NEU-TITAN_169 (TIT169_001) Titan 1 11/16" Neutron	4.33	1.69	20.00

Dataset: w redd #11.db: field/well/run1/pass1  
 Total Length: 10.92 ft  
 Total Weight: 47.50 lb  
 O.D. 1.69 in

Database File: h:\w redd #11.db  
 Dataset Pathname: pass1  
 Presentation Format: dirk 1  
 Dataset Creation: Thu May 03 08:21:47 2012 by Log Std Casedhole 07122  
 Charted by: Depth in Feet scaled 1:240

150	gr	300	100	NEU	1500
0	GR	150	13	CCL	-1



150	gr	300	100	NEU	1500
0	GR	150	13	CCL	-1



Company **McPHERSON DRILLING, LLC**  
 Well **W. REDD #11**  
 Field **NEODESHA**  
 County **WILSON** **SEC. 26 TWP. 30S RGE. 16E**  
 State **KANSAS** Date **5-3-2012**