



**GAMMA RAY
NEUTRON
COMPLETION LOG**

Company: VIVA INTERNATIONAL, INC.
Well: DONLEY #11-V
Field: COLONY-WELDA
County: ANDERSON
State: KANSAS

Location: 4175' FSL & 630' FEL
SW SE NE NE
SEC 31 TWP 22S RGE 19E
Permanent Datum: G.L.
Log Measured From: G.L.
Drilling Measured From: G.L.
Elevation: 1113' EST
K 8
D.F.
G.L. 1113' EST

API #: 15-003-25207-00-00
Other Services

Company	VIVA INTERNATIONAL, INC.
Well	DONLEY #11-V
Field	COLONY-WELDA
County	ANDERSON
State	KANSAS
Location	4175' FSL & 630' FEL SW SE NE NE SEC 31 TWP 22S RGE 19E
Permanent Datum	G.L.
Log Measured From	G.L.
Drilling Measured From	G.L.
Elevation	1113' EST K 8 D.F. G.L. 1113' EST
Date	11-14-2011
Run Number	1-NEWWELL
Depth Driller	897.8'
Top Log Interval	SURFACE
Bottom Logged Interval	897.8'
Fluid Level	FULL
Type Fluid	WATER
Production Casing	2 7/8" @ 1 D.
Max. Reported Temp.	@
Estimated Cement Top	@
Calculated Cement Top	
Amount & Type Cement	
Amount & Type Admix	
Drilling Contractor	H.A.T.
Equipment Number	107
Location	UDEN, D.
Recorded By	OGLE, K.
Witnessed By	

<<< Fold Here >>>

All interpretations are opinions based on inferences from electrical or other measurements and we cannot and do not guarantee the accuracy or correctness of any interpretation, and we shall not, except in the case of gross or willful negligence on our part, be liable or responsible for any loss, costs, damages, or expenses incurred or sustained by anyone resulting from any interpretation made by any of our officers, agents or employees. These interpretations are also subject to our general terms and conditions set out in our current Price Schedule.

Comments

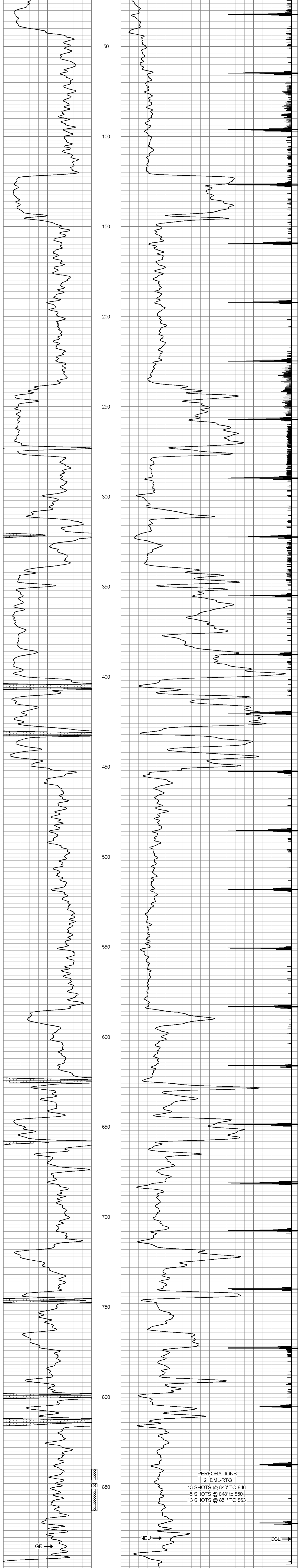
THANK YOU

Sensor	Offset (ft)	Schematic	Description	Len (ft)	OD (in)	Wt (lb)
GR	7.59		GR-TITAN_169 (TIT169_001) Titan 1 11/16" Gamma Ray	4.75	1.69	20.00
CCL	5.05		CCL-TITAN_169 (TIT169) Titan 1 11/16" Logging CCL	1.83	1.69	7.50
NEU	0.63		NEU-TITAN_169 (TIT169_001) Titan 1 11/16" Neutron	4.33	1.69	20.00

Dataset: donley #11-v.db: field/well/run1/pass1
Total Length: 10.92 ft
Total Weight: 47.50 lb
O.D.: 1.69 in

Database File: g:\donley #11-v.db
Dataset Pathname: pass1
Presentation Format: dirk 1
Dataset Creation: Mon Nov 14 12:00:45 2011 by Log Std Casedhole 07122
Charted by: Depth in Feet scaled 1.240

150	gr	300	100	NEU	1500
0	GR	150	13	CCL	-1



150	gr	300	100	NEU	1500
0	GR	150	13	CCL	-1



Company: VIVA INTERNATIONAL, INC.
Well: DONLEY #11-V
Field: COLONY-WELDA
County: ANDERSON SEC. 31 TWP. 22S RGE. 19E
State: KANSAS
Date: 11-14-2011