



MIDWEST SURVEYS
 LOGGING - PERFORATING - CONSULTING SERVICES
 P.O. Box 88, Osawatomie, KS 66064
 913.755.2128

GAMMA RAY / NEUTRON / CCL

File No.

Company Kansas Resources Exploration

Well Knabe "A" No. KR-13

Field Gardner

County Johnson State Kansas

Location 716' FSL & 1610' FEL

SE-NE-SW-SE

Sec. 10 Twp. 14S Rge. 22E

Permanent Datum Log Measured From Drilling Measured From

GL GL GL GL

Elevation NA

Elevation K.B. NA D.F. NA G.L. NA

Date 08-01-2012

Run Number One

Depth Driller 900.0

Depth Logger 874.5

Bottom Logged Interval 873.5

Top Log Interval 200.0

Fluid Level Full

Type Fluid Water

Density / Viscosity NA

Salinity - PPM Cl NA

Max. Recorded Temp NA

Estimated Cement Top 0.0

Equipment No. Location 107 Osawatomie

Recorded By Steve Vahndisch

Witnessed By Brad Kramer

BORE-HOLE RECORD

CASINGS RECORD

TO FROM TO FROM TO

NO. BIT NO. BIT NO. BIT

One 9.875" 22.0 7.00" 19.0# 0.0 22.2

Two 5.625" 22.0 900.0 2.875" 6.5# 0.0 875.0

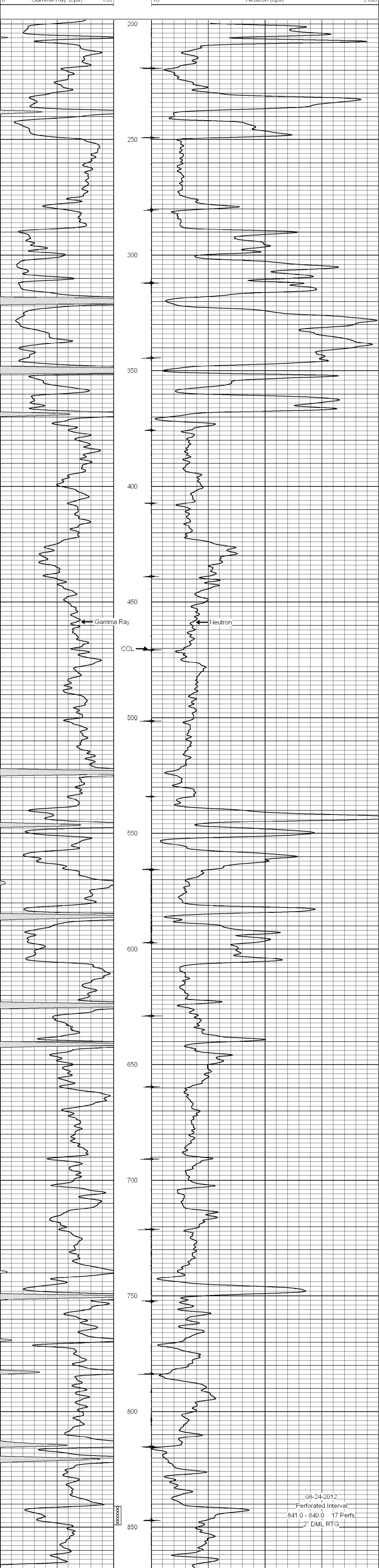
<<< Fold Here >>>

All interpretations are opinions based on inferences from electrical or other measurements and we cannot and do not guarantee the accuracy or correctness of any interpretation, and we shall not, except in the case of gross or willful negligence on our part, be liable or responsible for any loss, costs, damages, or expenses incurred or sustained by anyone resulting from any interpretation made by any of our officers, agents or employees. These interpretations are also subject to our general terms and conditions set out in our current Price Schedule.

Comments

Drilling Contractor :
Utah Oil Company

Database File: knabe13kra.db
 Dataset Pathname: pass1
 Presentation Format: gr-n-ccl
 Dataset Creation: Wed Aug 01 15:31:36 2012 by Log SCH 111116
 Charted by: Depth in Feet scaled 1:240



08-24-2012
 Perforated Interval
 841.0 - 849.0 17 Perfs.
 2" DML RTG