



**MIDWEST SURVEYS**  
LOGGING - PERFORATING - CONSULTING SERVICES  
P.O. Box 68, Osawatomie, KS 66064  
913 / 765 - 2128

**GAMMA RAY / NEUTRON / CCL**

File No.

Company **ST Petroleum, Inc.**

Well **Thomas "A" No. 1-7**

Field **Gardner South**

County **Johnson** State **Kansas**

Location **3080' FSL & 1275' FEL  
NW-SW-SE-NE**

Other Services **Perforate**

Sec. **29** Twp. **14S** Rge. **22E** Elevation **N/A**

Permanent Datum **GL** K.B. **NA**

Log Measured From **GL** D.F. **NA**

Drilling Measured From **GL** G.L. **NA**

Date **05-21-2012**

Run Number **One**

Depth Driller **950.0**

Depth Logger **929.2**

Bottom Logged Interval **928.2**

Top Log Interval **200.0**

Fluid Level **Full**

Fluid Type **Water**

Density / Viscosity **NA**

Salinity - PPM Cl **NA**

Max Recorded Temp **NA**

Estimated Cement Top **0.0**

Equipment No. **107** Osawatimie **Location**

Recorded By **Steve Windisch**

Witnessed By **Rik Singleton**

BORE-HOLE RECORD

NO. BIT FROM TO

One 9.875" 0.0 21.0 7.00"

Two 5.625" 21.0 950.0 2.875"

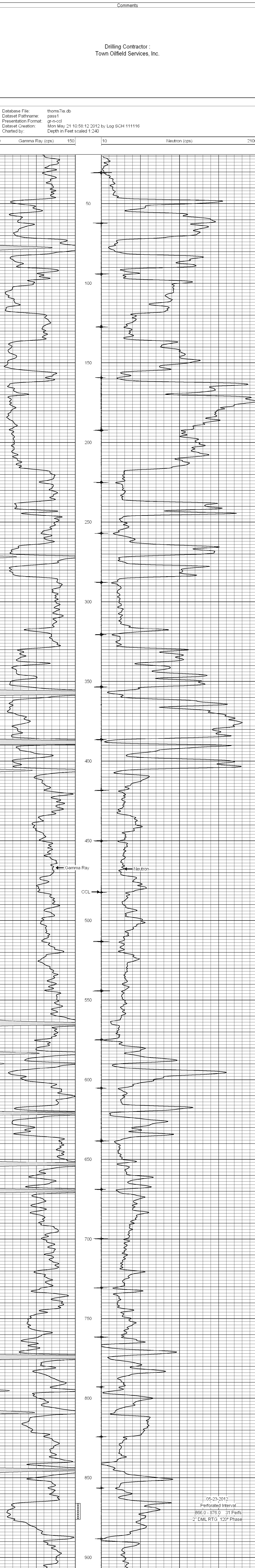
05-23-2012

Perforated Interval

866.0 - 876.0 31 Perfs

2" DML RTG 120° Phase

Database File: thoms71a.db  
Dataset Pathname: pass1  
Presentation Format: gr-n-ccl  
Dataset Creation: Mon May 21 10:58:12 2012 by Log SCH 1111116  
Charted by: Depth in Feet scaled 1:240



Gamma Ray (cps) Neutron (cps)