



DIGITAL LOG (785) 625-3858

Computer Processed Interpretation

API No. 15-135-25,398-00-00

Company American Warrior, Inc.

Well Freda Trust #2-16

Field Margheim

County Ness State Kansas

Location 630' FSL & 1210' FWL

Sec: 16 Twp: 19 S Rge: 21 W

Other Services
DIL/CNL/CDL

Elevation

Permanent Datum Ground Level Elevation 2215
Log Measured From Kelly Bushing 6 Ft. Above Perm. Datum
Drilling Measured From Kelly Bushing

K.B. 2221
D.F.
G.L. 2215

Date Recorded 7/12/2012

Depth Logger 4339

Curve Definitions

SW Water Saturation

SXO Water Saturation In The Flushed Zone

VCL Volume Of Clay

PHIE Density - Neutron Crossplot Shale Corrected

BWV Bulk Volume Water

BWMSXO Bulk Volume Water In Flushed Zone

DCAL Caliper

SPC SP Corrected For Baseline

DGA Apparent Grain Density

Payflag If: PHIE > 2 %, VCL < 40 %, SPC > -10 , SW < 50 % & DCAL < 11

Recorded By K. Bange

Witnessed By Jason Alm

Analysis By Dale Legleiter

<<< Fold Here >>>

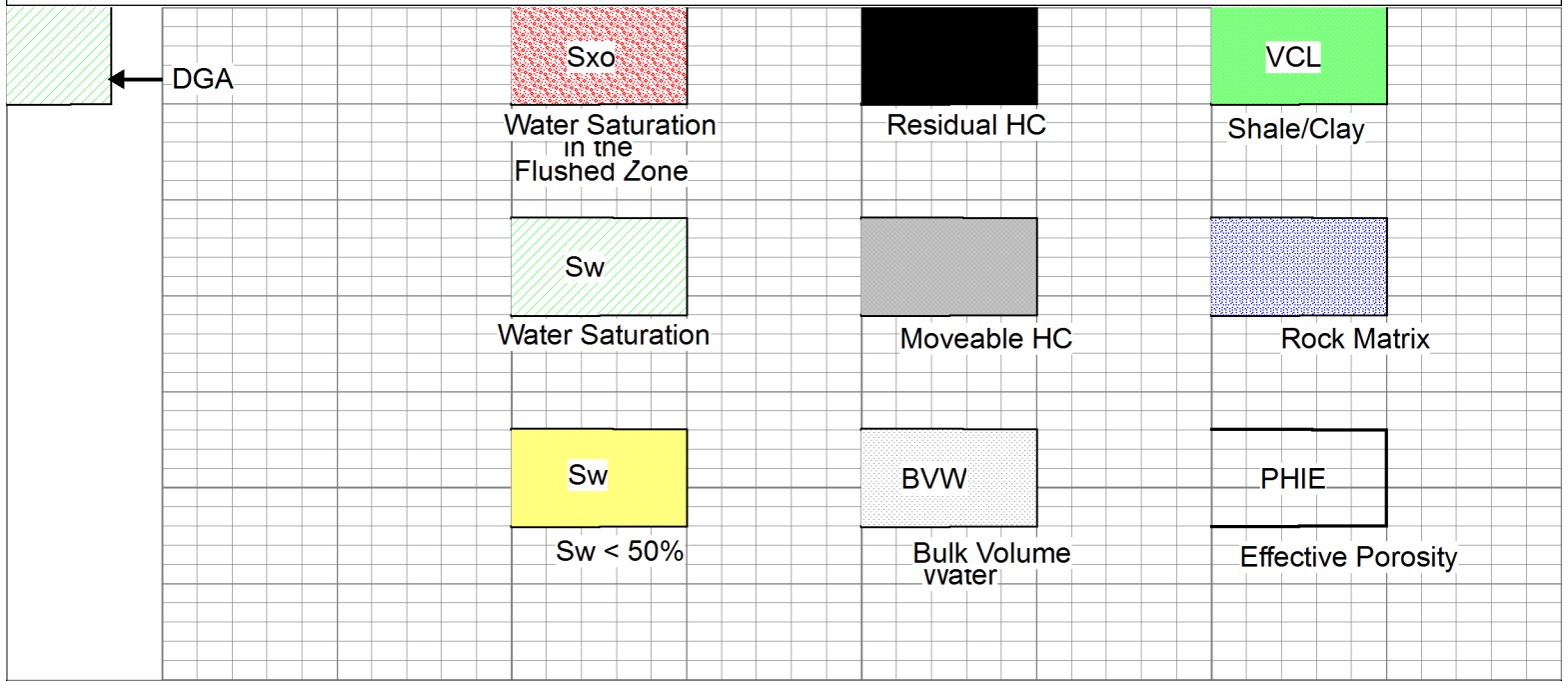
All interpretations are opinions based on inferences from electrical or other measurements and we cannot and do not guarantee the accuracy or correctness of any interpretation, and we shall not, except in the case of gross or willful negligence on our part, be liable or responsible for any loss, costs, damages, or expenses incurred or sustained by anyone resulting from any interpretation made by any of our officers, agents or employees. These interpretations are also subject to our general terms and conditions set out in our current Price Schedule.

Comments

Thank you for using Log-Tech, Inc.
www.logtechinc.com

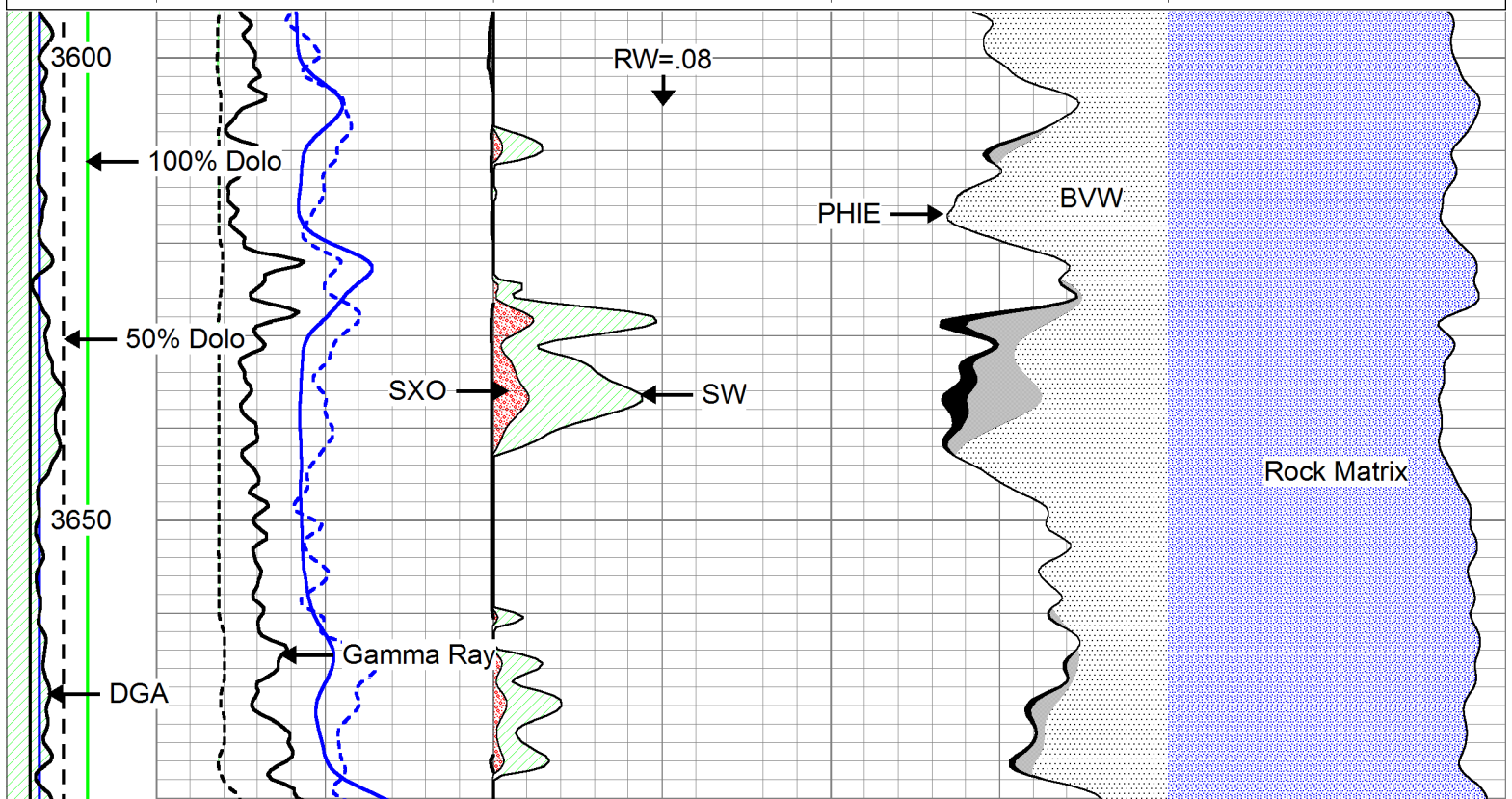
Alexander, W to GGrd,
S to 100 rd, 1 W to HH rd,
1 S, 1/4 E, N into

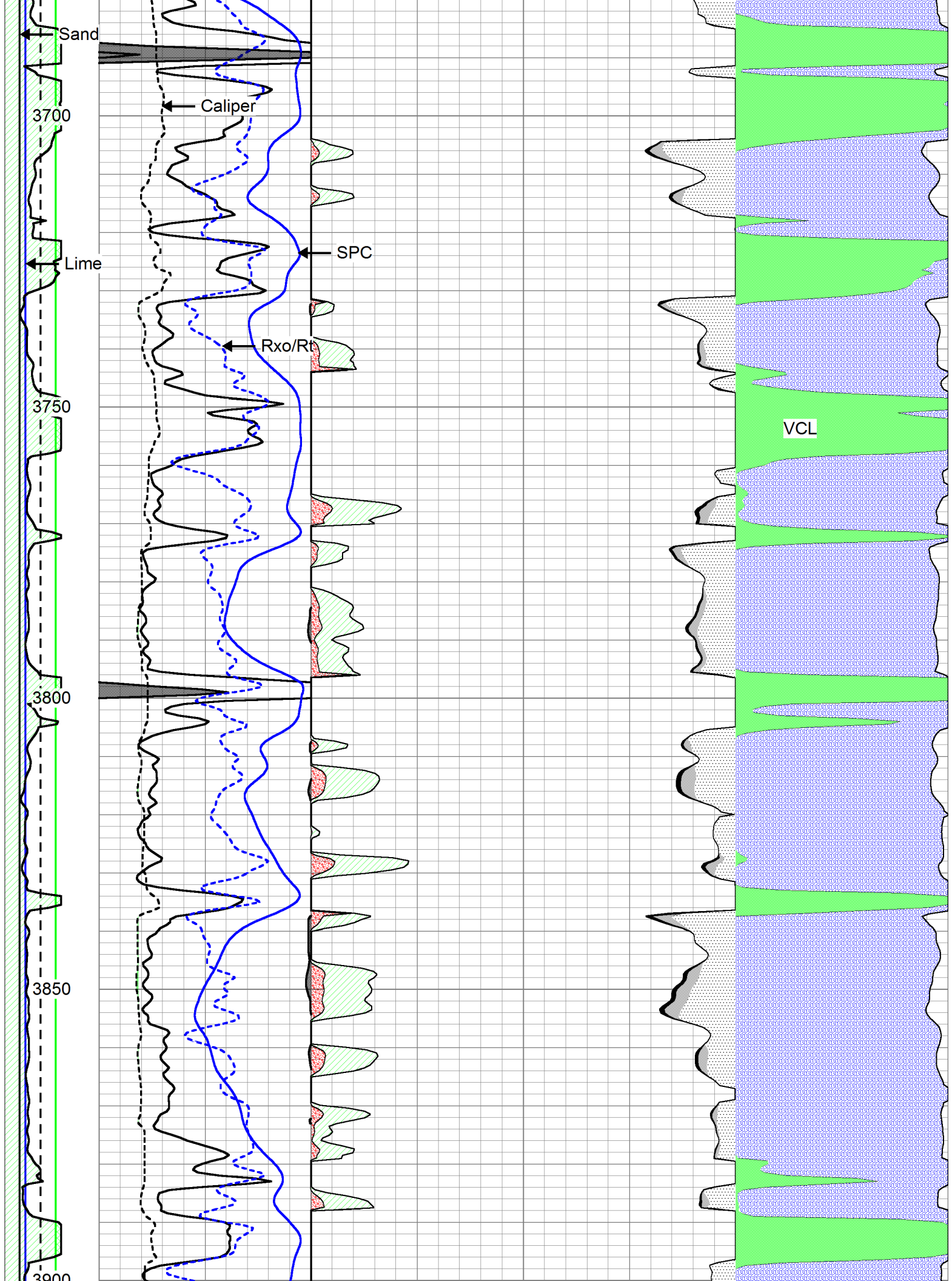
Database File: c:\warrior\data\cross plots\2wxplt.db
Dataset Pathname: litho
Presentation Format: 2wxplt

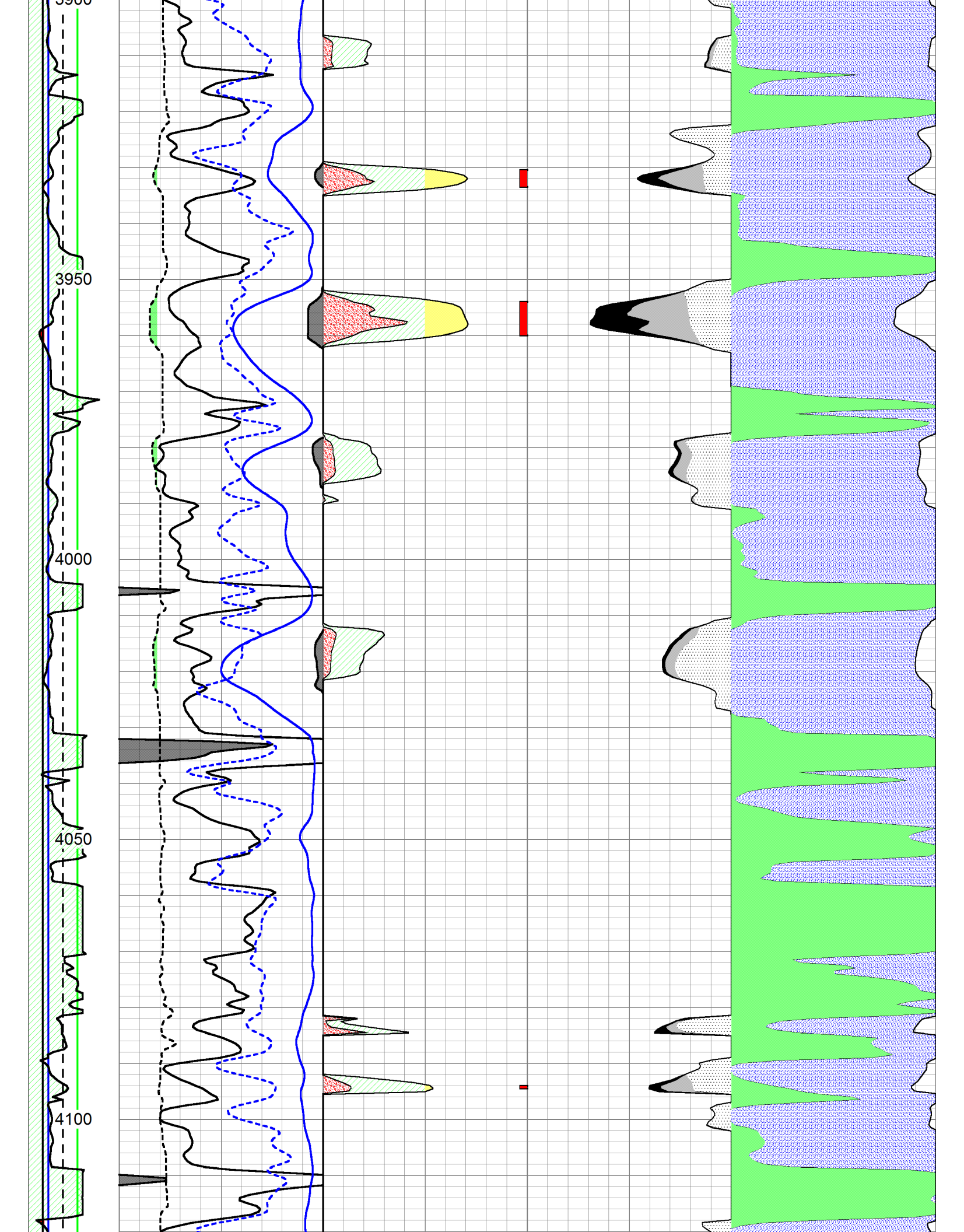


Database File: c:\warrior\data\amwar_freda trust #2-16\amwar_freda2_16hd.db
 Dataset Pathname: cpi/awcpi
 Presentation Format: calc
 Dataset Creation: Thu Jul 12 15:06:47 2012
 Charted by: Depth in Feet scaled 1:240

DGA	0	Gamma Ray	150	1	SW	0	0.3	PHIE	0	0	VCL	1	
2.6	3.1	6	DCAL	16	30	PAYFLAG	0	0.3	BVW	0	1	PHIE	0
		-150	SPC (mV)	0	1	SXO	0	0.3	BVWSXO	0			







4350													
DGA	0	Gamma Ray	150	1	SW	0	0.3	PHIE	0	0	VCL	1	
2.6	3.1	6	DCAL	16	30	PAYFLAG	0	0.3	BVW	0	1	PHIE	0
		-150	SPC (mV)	0	1	SXO	0	0.3	BVWSXO	0			