



DIGITAL LOG

(785) 625-3858

Dual Induction Log

15-135-25,398-00-00

API No.

Company American Warrior, Inc.

Well Freda Trust #2-16

Field Margheim

County Ness State Kansas

Location 630' FSL & 1210' FWL

Sec: 16 Twp: 19 S Rge: 21 W

Permanent Datum Ground Level Elevation 2215

Log Measured From Kelly Bushing 6 Ft. Above Perm. Datum

Drilling Measured From Kelly Bushing

Other Services

CNL/CDL

Elevation  
K.B. 2221  
D.F. 2215  
G.L. 2215

Date 7/12/2012

Run Number One

Depth Driller 4343

Depth Logger 4339

Bottom Logged Interval 4338

Top Log Interval 200

Casing Driller 8.625 @ 226

Casing Logger 218

Bit Size 7.875

Type Fluid in Hole Chemical

Salinity, ppm CL 6,400

Density / Viscosity 9.3 53

pH / Fluid Loss 10.0 8.8

Source of Sample Flowline

Rm @ Meas. Temp .95 @ 70

Rmf @ Meas. Temp .71 @ 70

Rmc @ Meas. Temp 1.28 @ 70

Source of Rmf / Rmc Charts

Rm @ BHT .56 @ 119

Operating Rig Time 3 Hours

Max Rec. Temp. F 119

Equipment Number 108

Location Hays

Recorded By K. Bange

Witnessed By Jason Alm

<<< Fold Here >>>

All interpretations are opinions based on inferences from electrical or other measurements and we cannot and do not guarantee the accuracy or correctness of any interpretation, and we shall not, except in the case of gross or willful negligence on our part, be liable or responsible for any loss, costs, damages, or expenses incurred or sustained by anyone resulting from any interpretation made by any of our officers, agents or employees. These interpretations are also subject to our general terms and conditions set out in our current Price Schedule.

Comments

Thank you for using Log-Tech, Inc.  
(785) 625-3858

Alexander, W to GGrd,  
S to 100 rd, 1 W to HH rd,  
1 S, 1/4 E, N into

Database File: c:\warrior\data\amwar\_freda trust #2-16\amwar\_freda2\_16hd.db  
Dataset Pathname: dil/awstack  
Presentation Format: dil2in  
Dataset Creation: Thu Jul 12 12:10:20 2012  
Charted by: Depth in Feet scaled 1:600

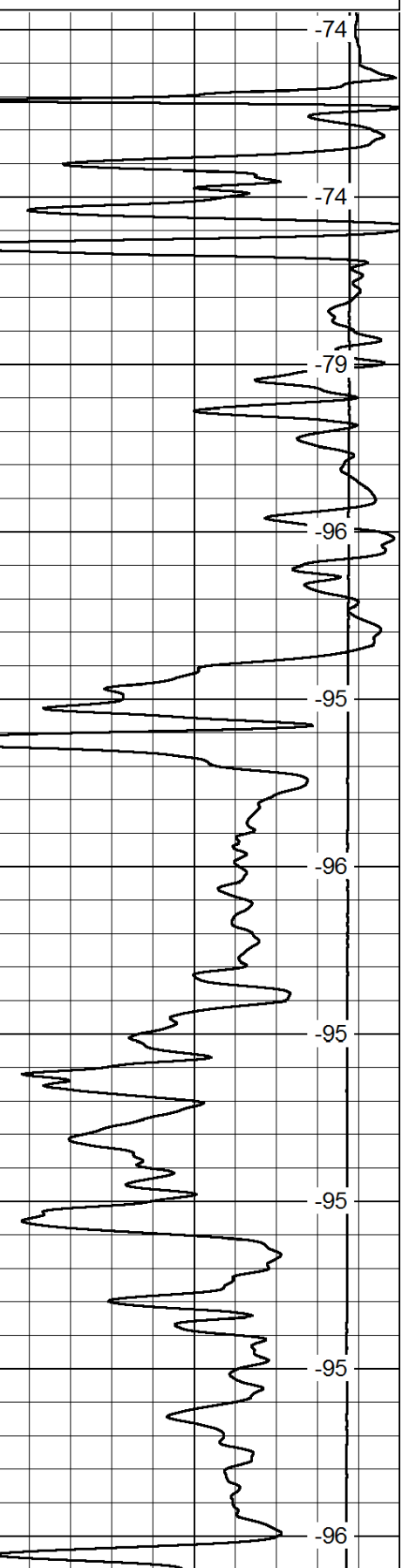
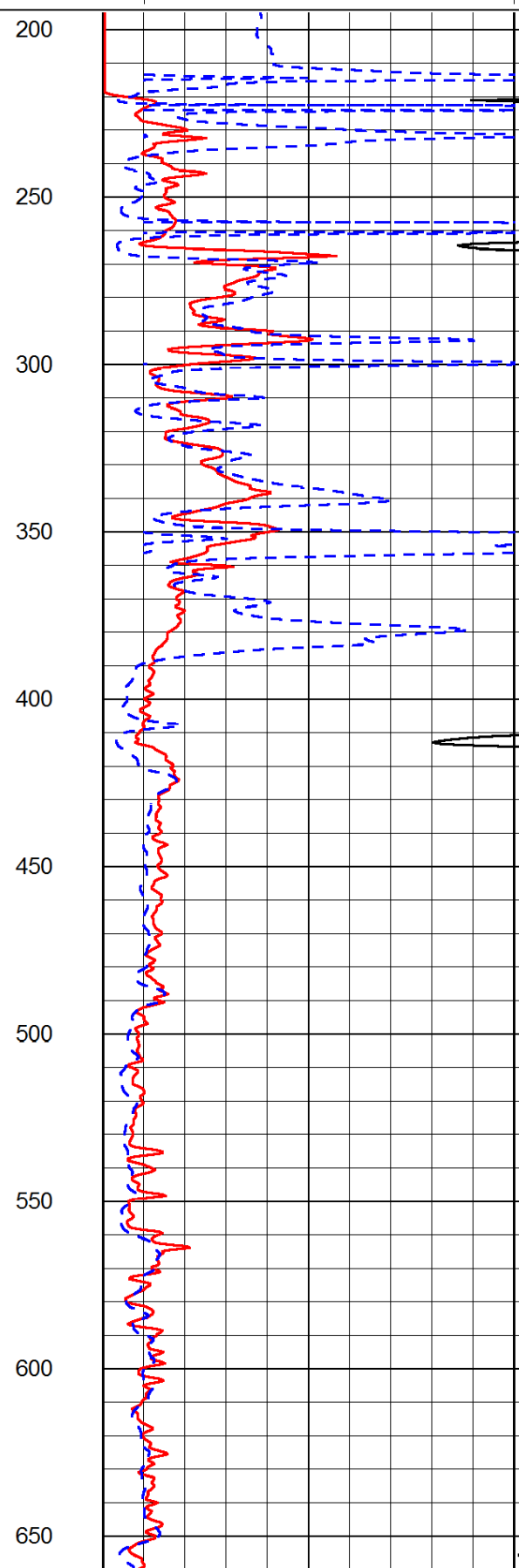
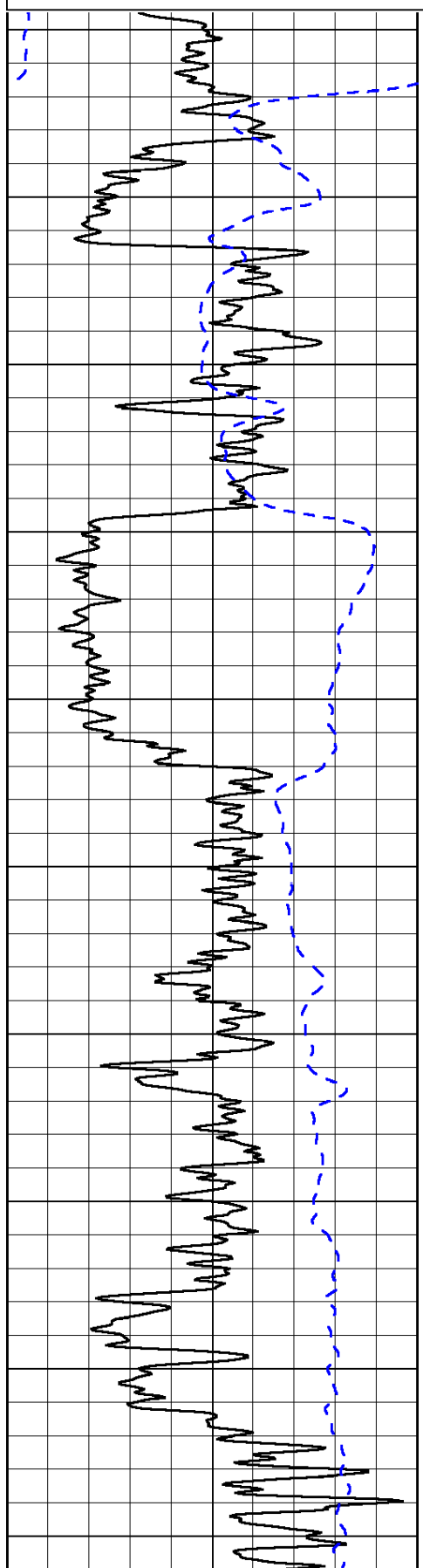
0	Gamma Ray	150
-200	SP (mV)	0

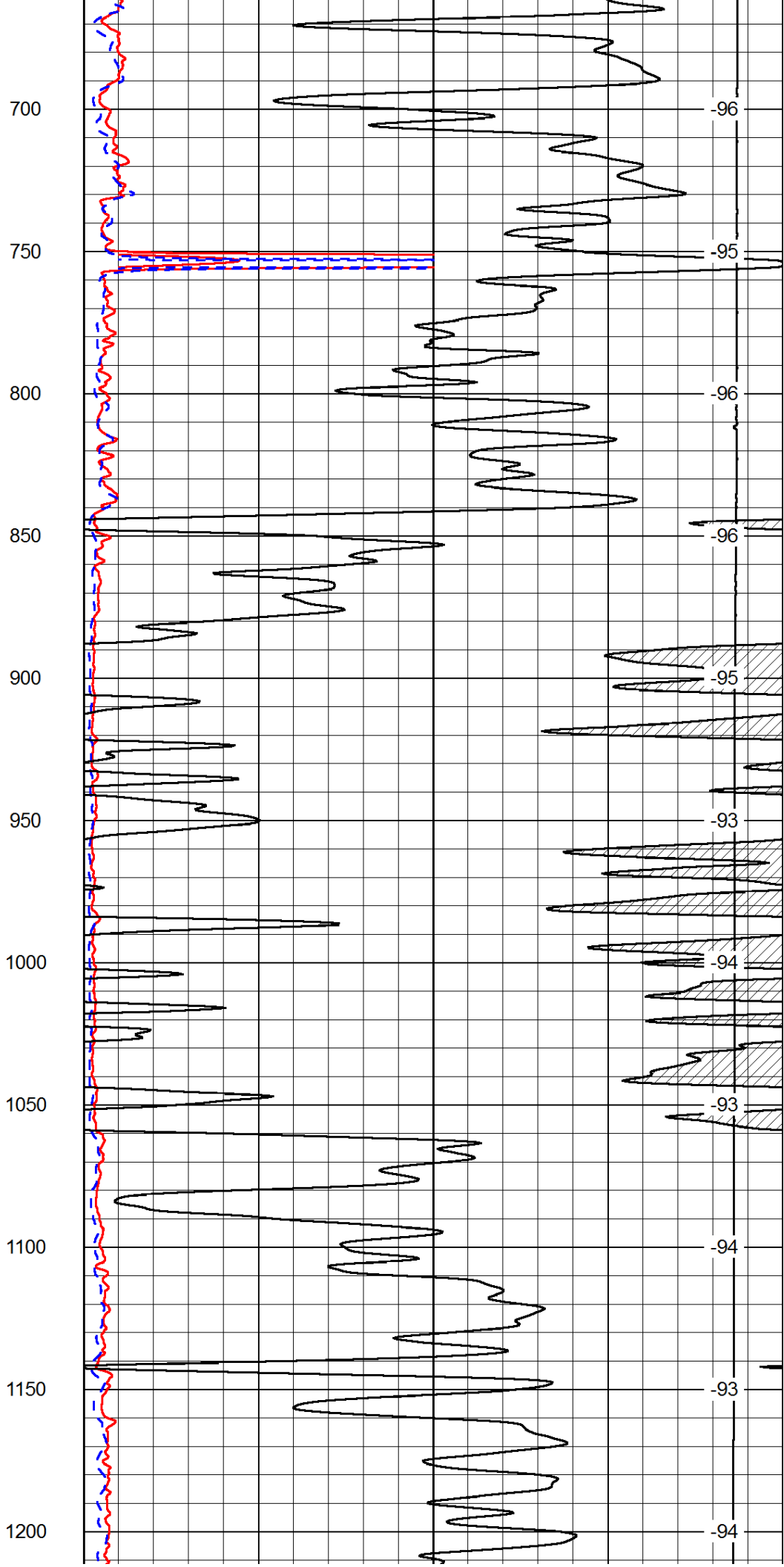
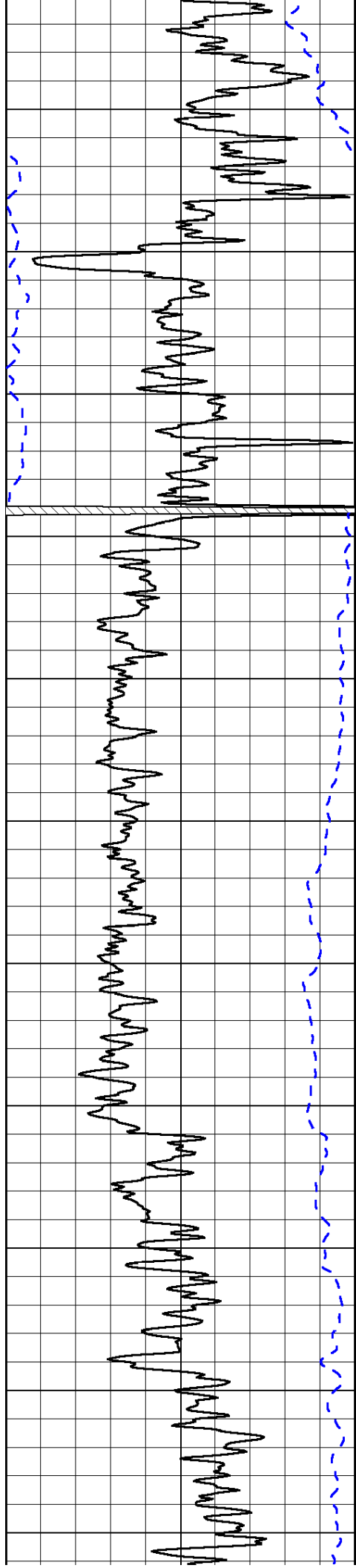
0	Shallow Resistivity	50
0	Deep Resistivity	50

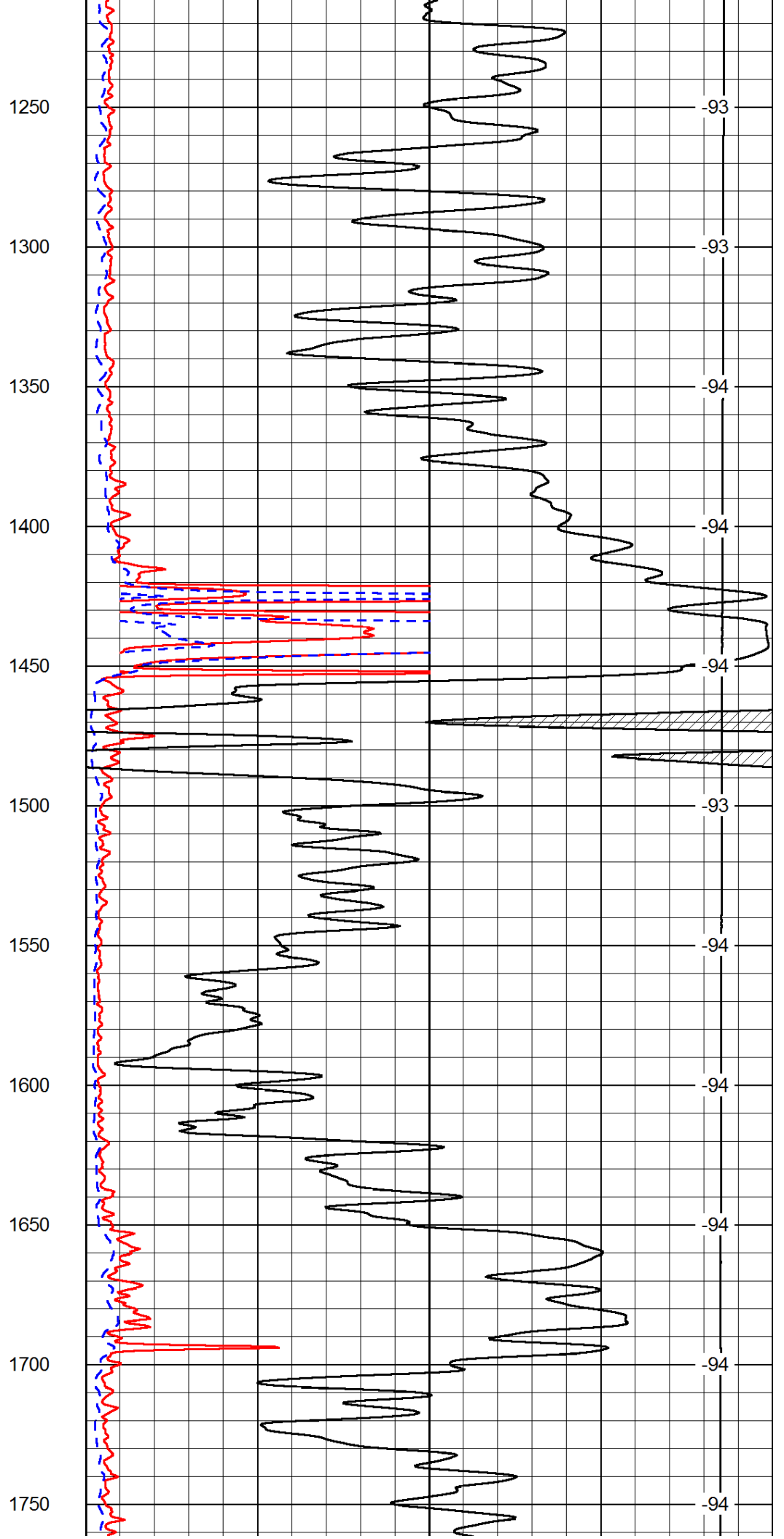
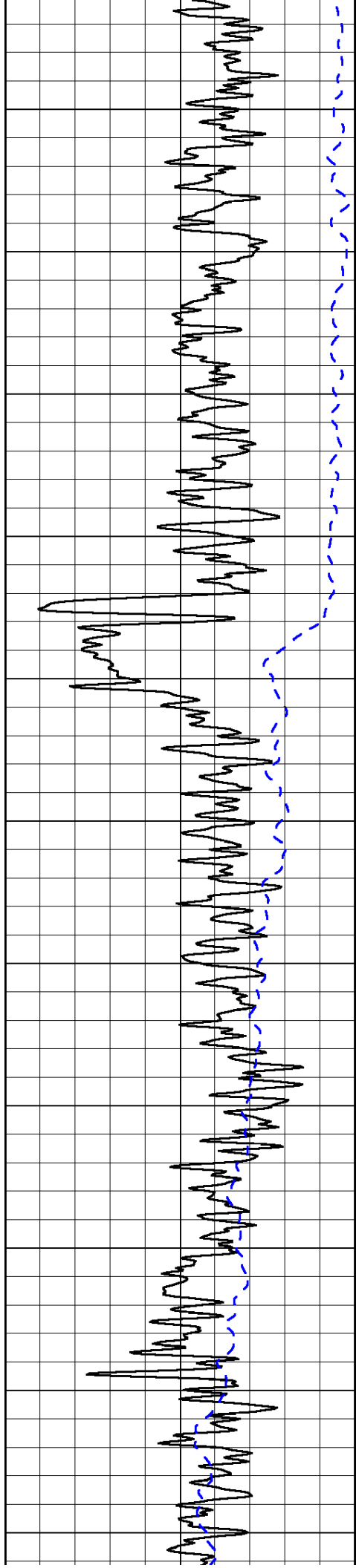
LSPD

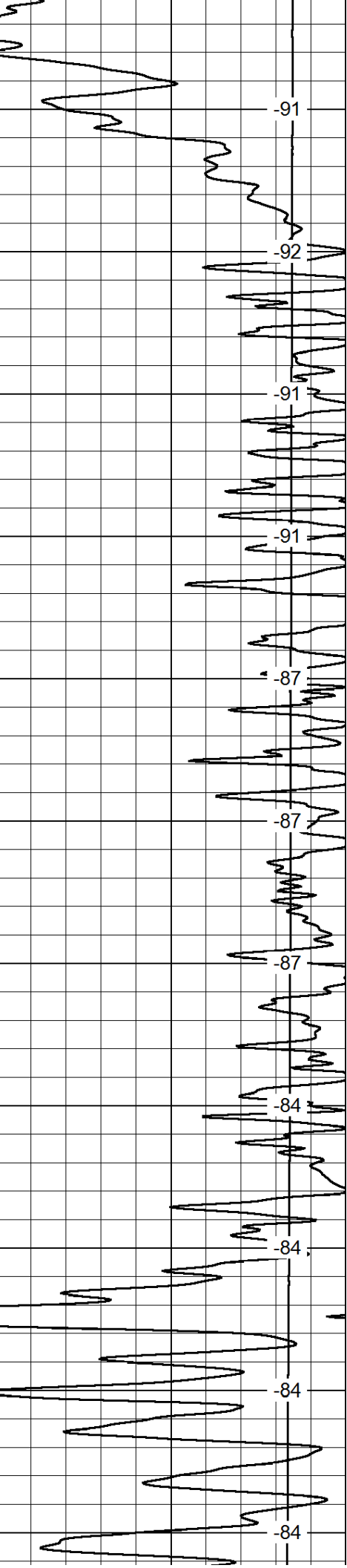
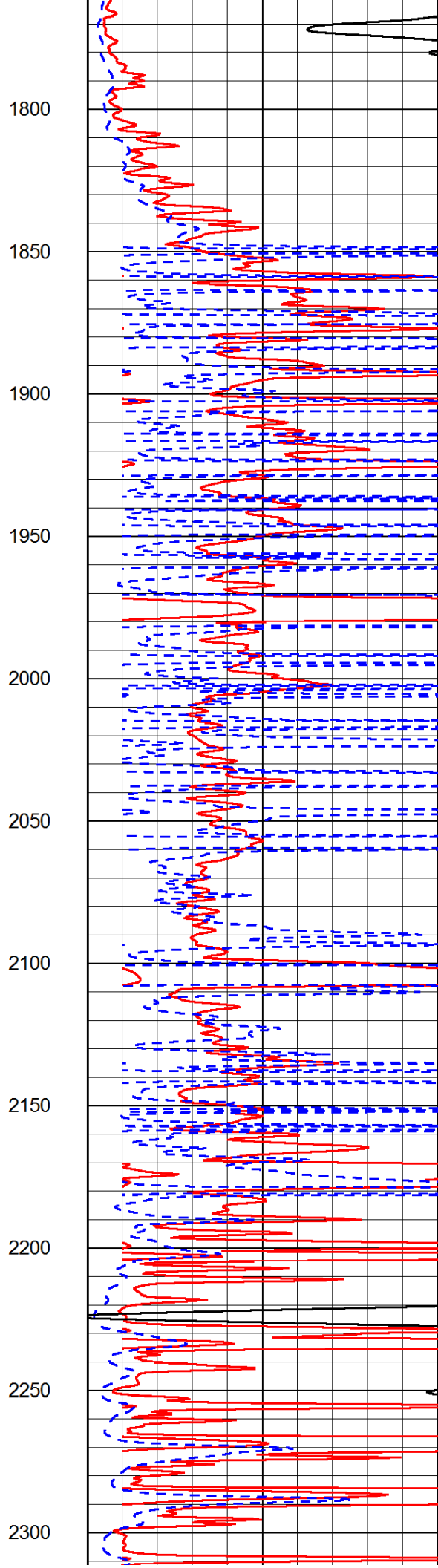
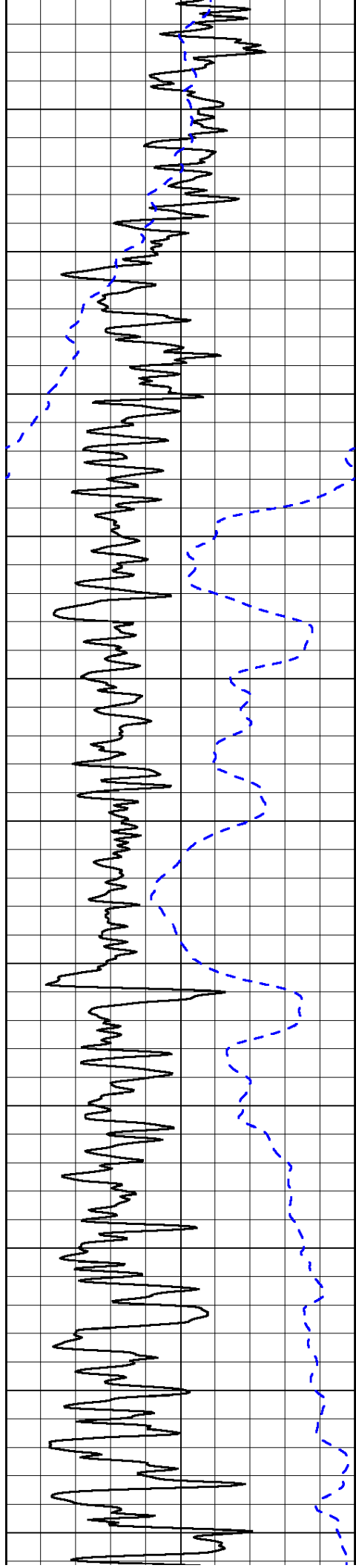
1000	Conductivity	0
15000	Line Tension	0

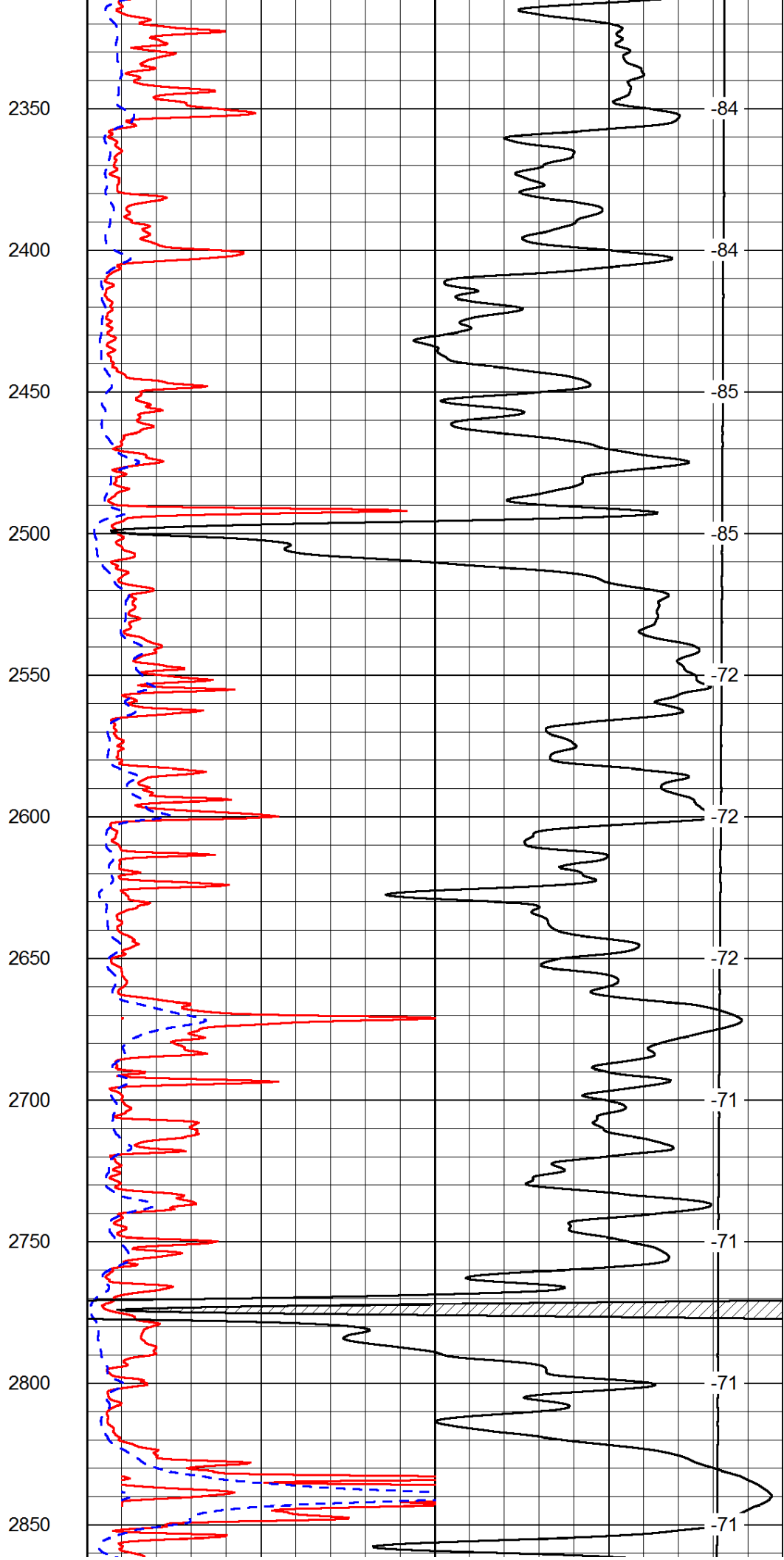
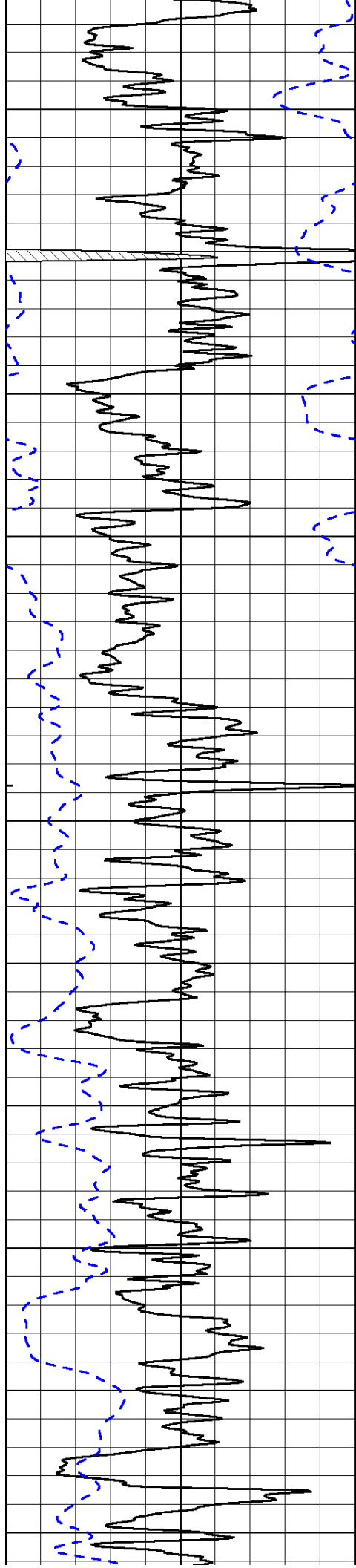
50	Shallow Resistivity	500
50	Deep Resistivity	500

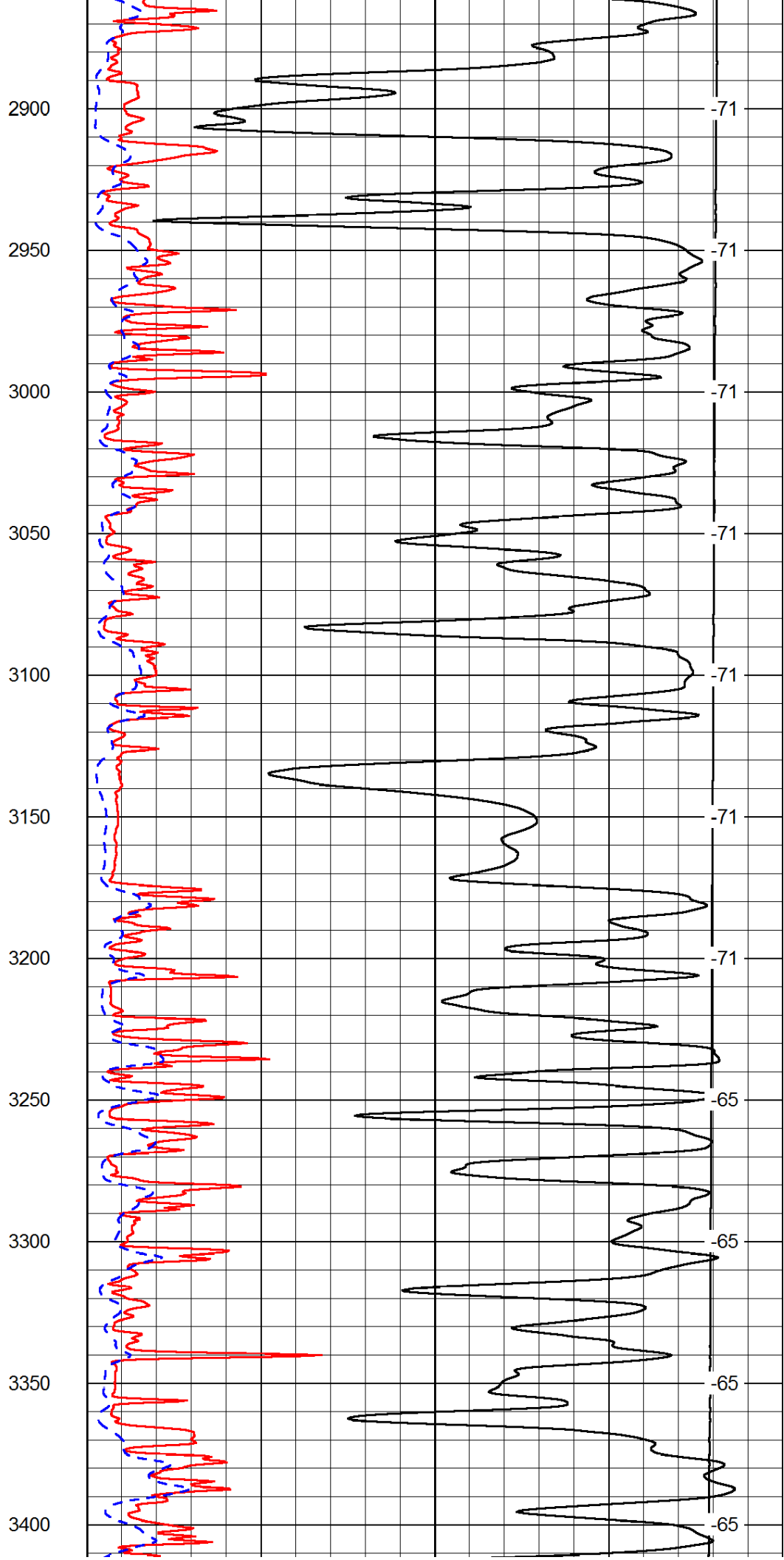
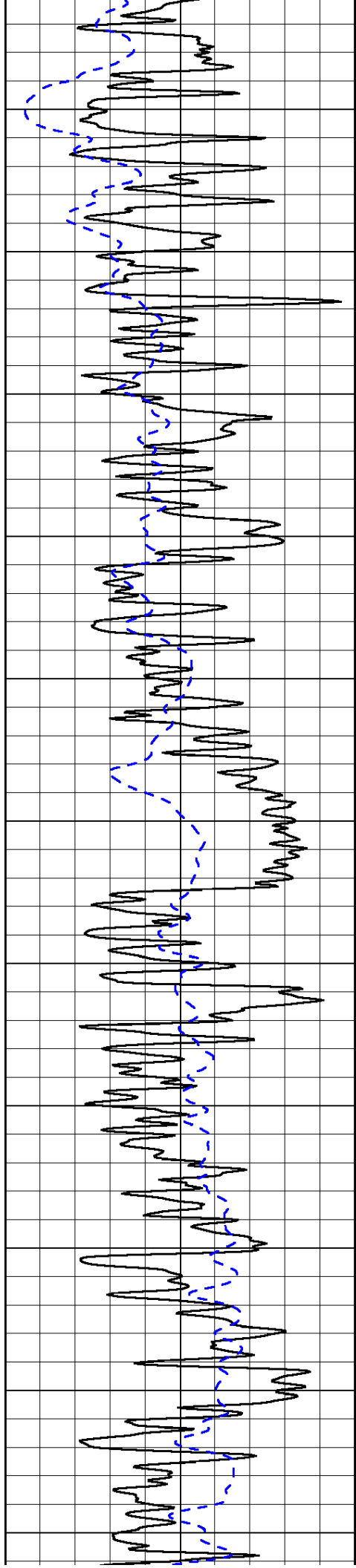


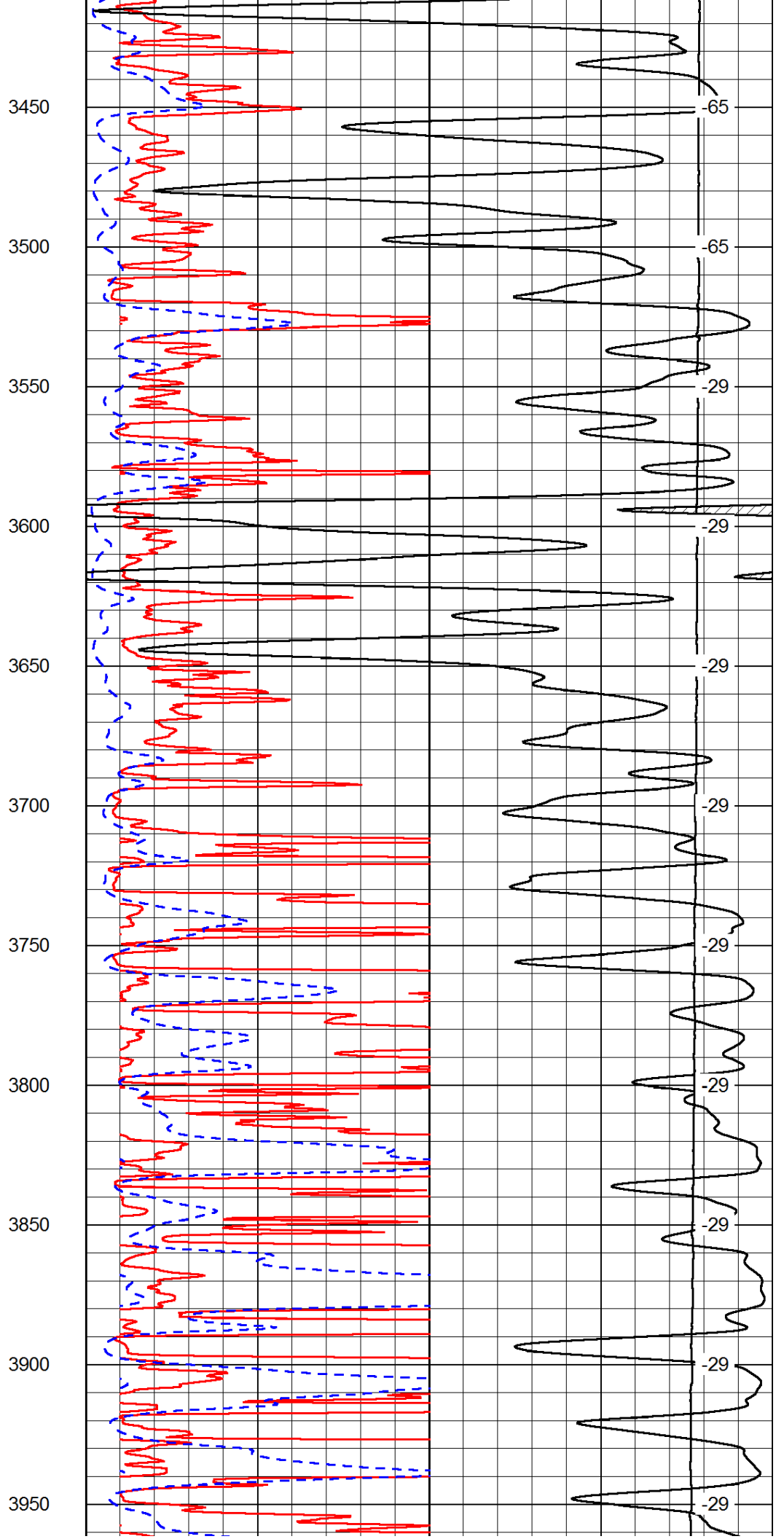
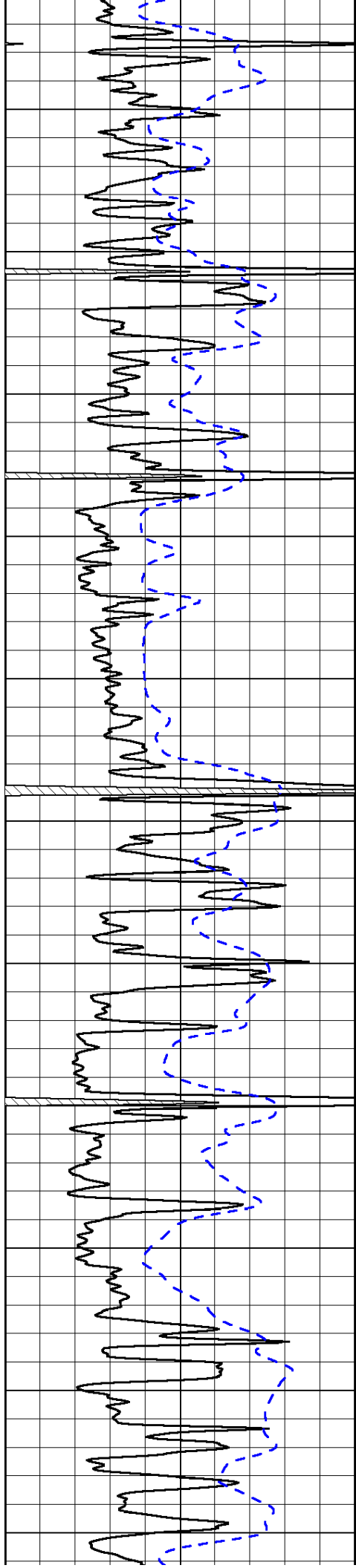


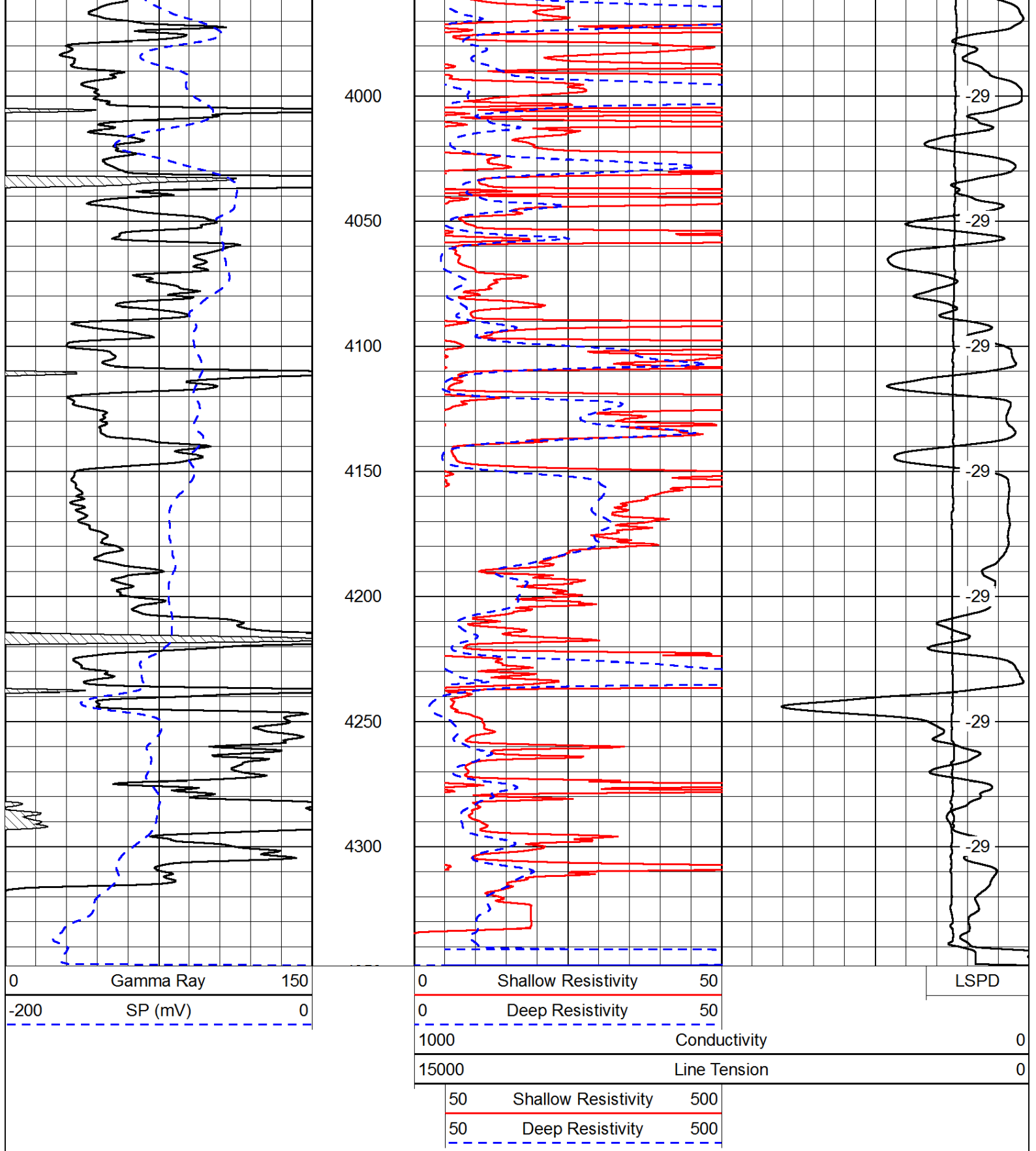






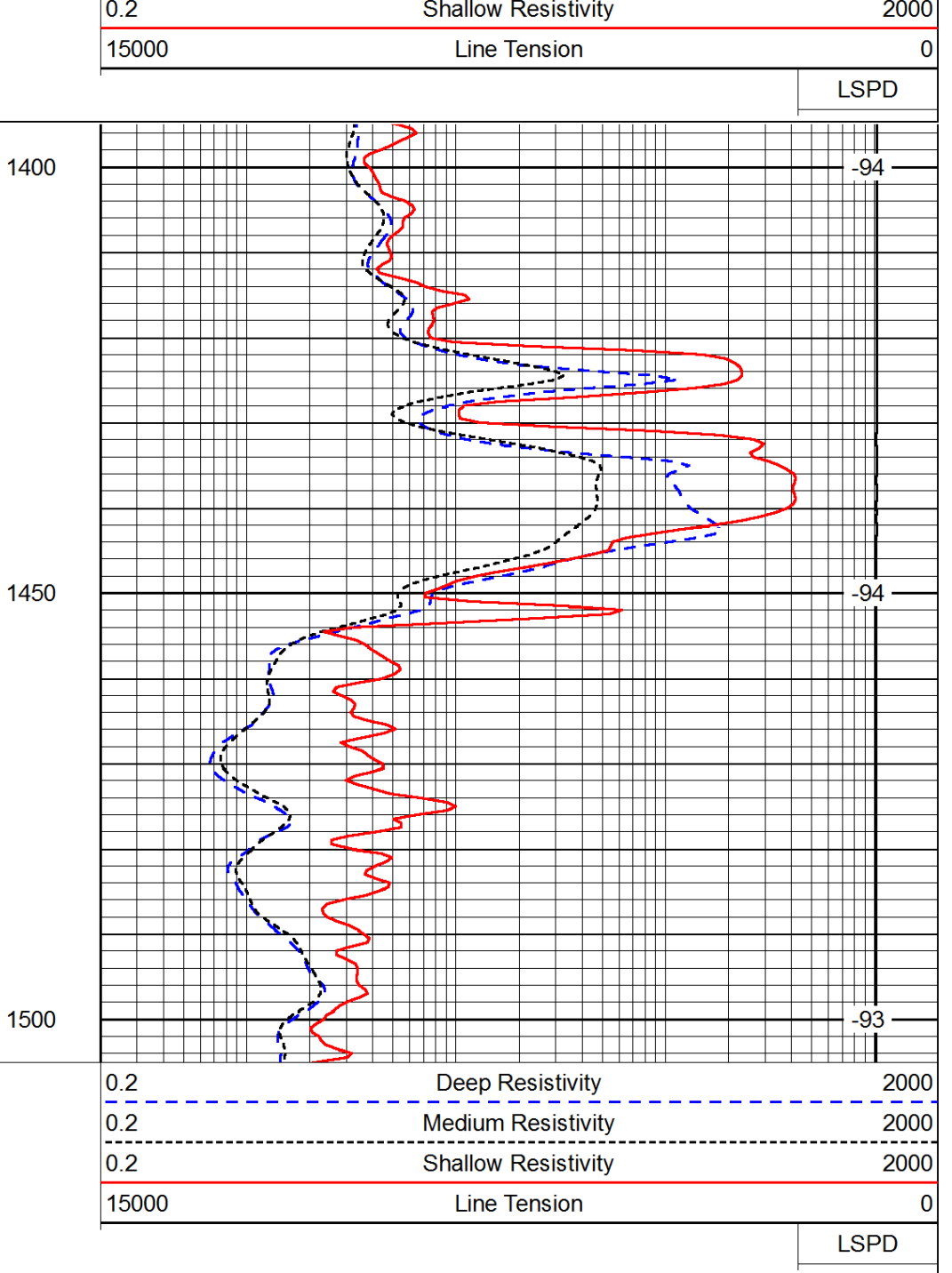
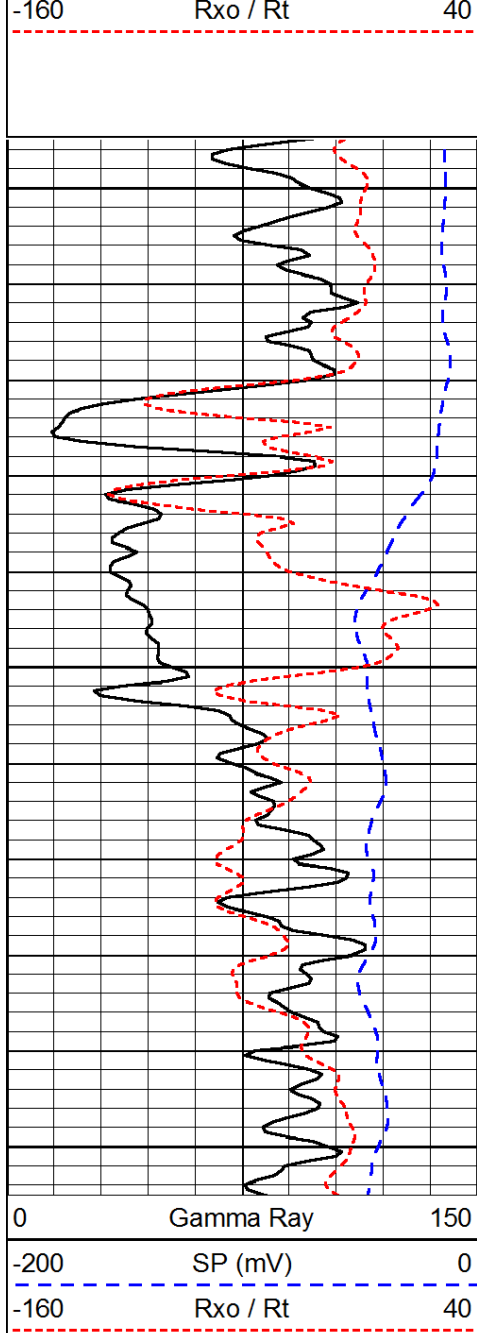




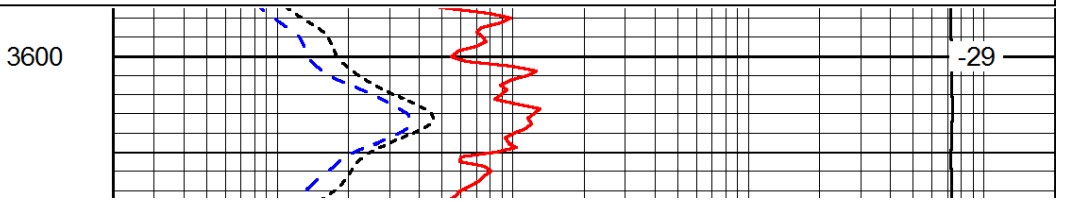
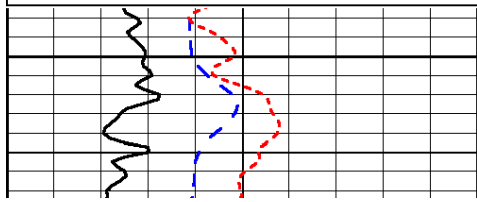
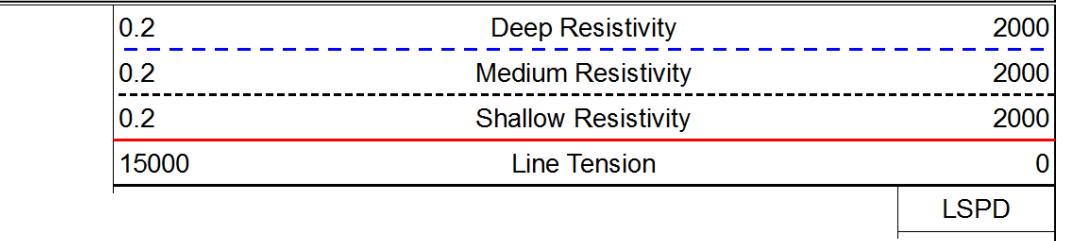
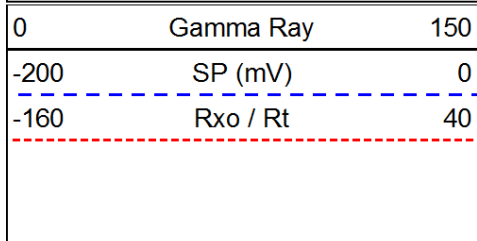


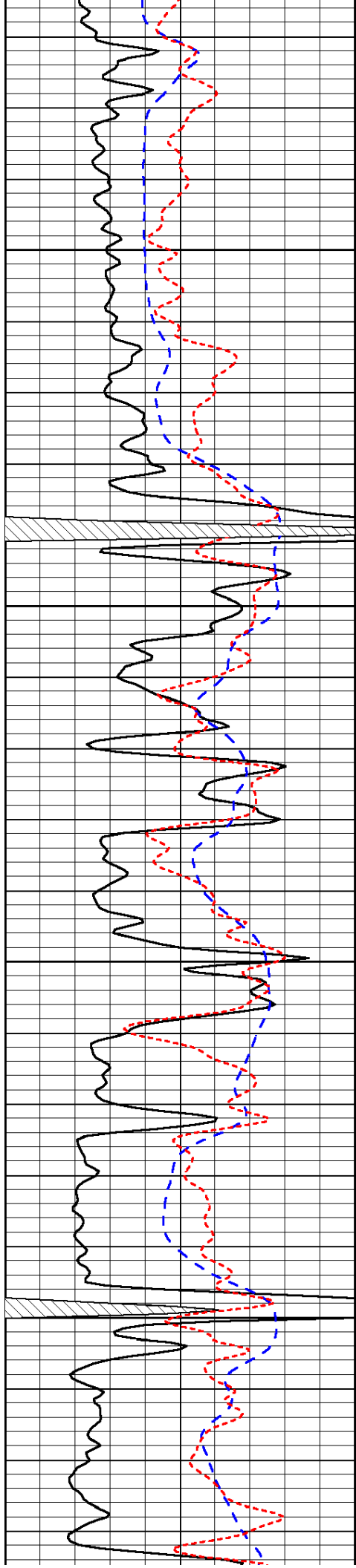
Database File: c:\warrior\data\amwar\_freda trust #2-16\amwar\_freda2\_16hd.db  
 Dataset Pathname: dil/awstack  
 Presentation Format: dil  
 Dataset Creation: Thu Jul 12 12:10:20 2012  
 Charted by: Depth in Feet scaled 1:240





Database File: c:\warrior\data\amwar\_freda trust #2-16\amwar\_freda2\_16hd.db  
 Dataset Pathname: dil/awstack  
 Presentation Format: dil  
 Dataset Creation: Thu Jul 12 12:10:20 2012  
 Charted by: Depth in Feet scaled 1:240



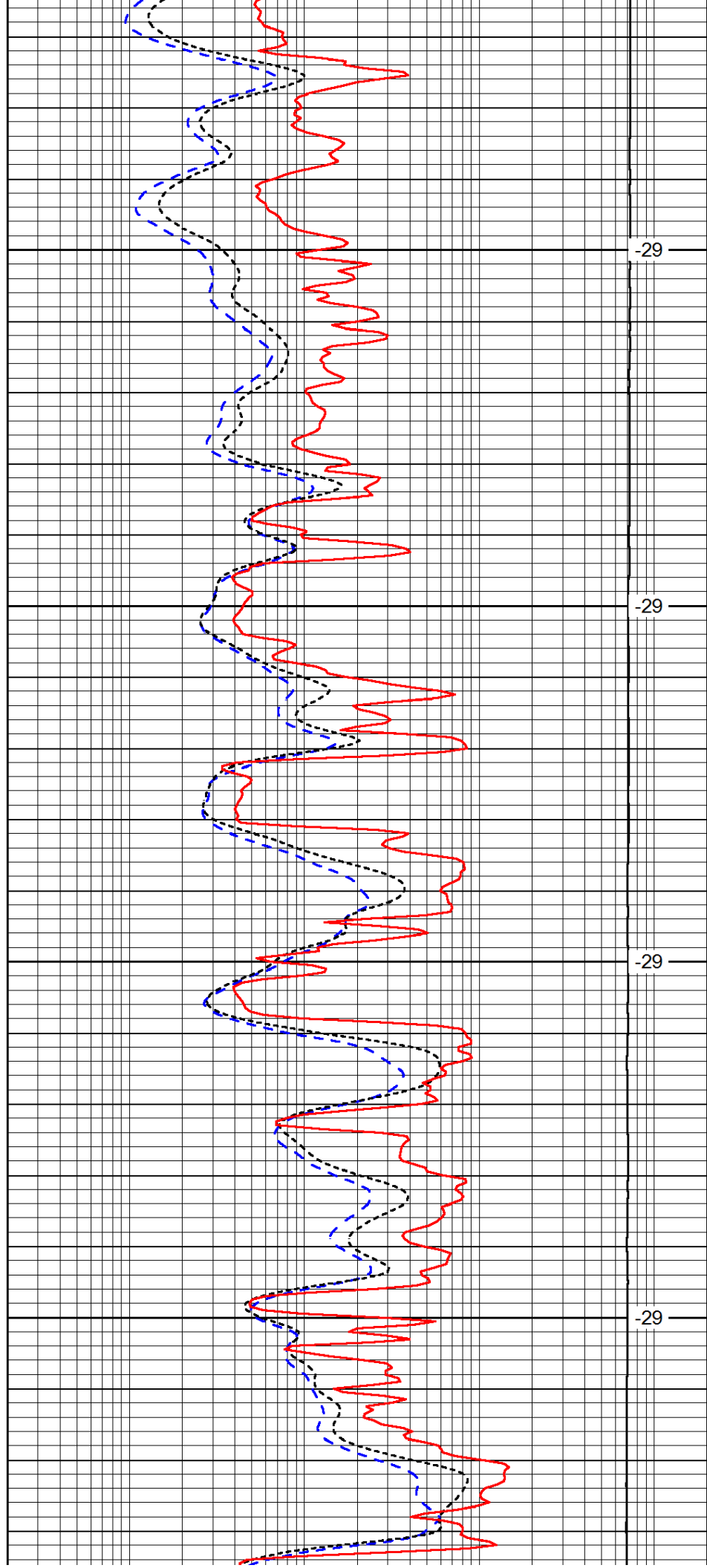


3650

3700

3750

3800

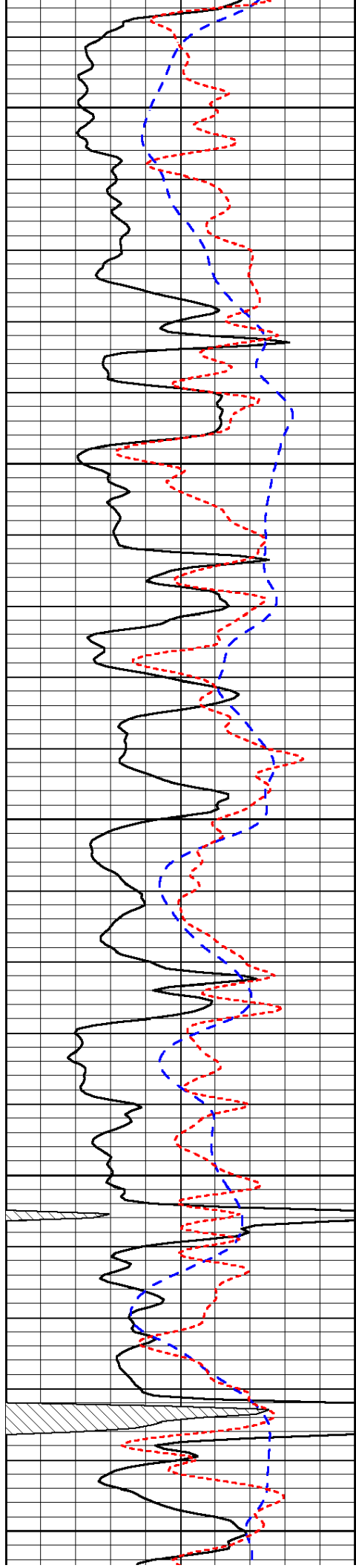


-29

-29

-29

-29



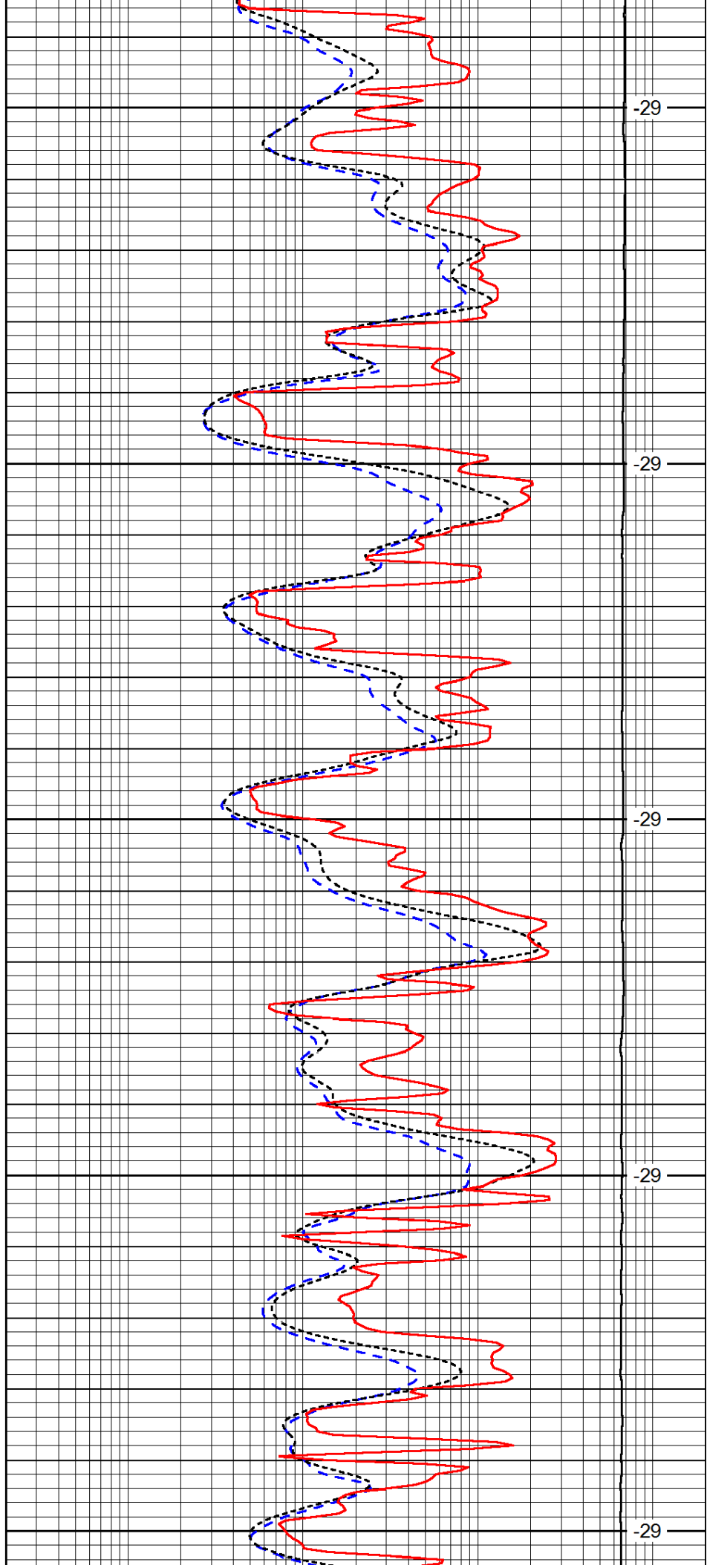
3850

3900

3950

4000

4050



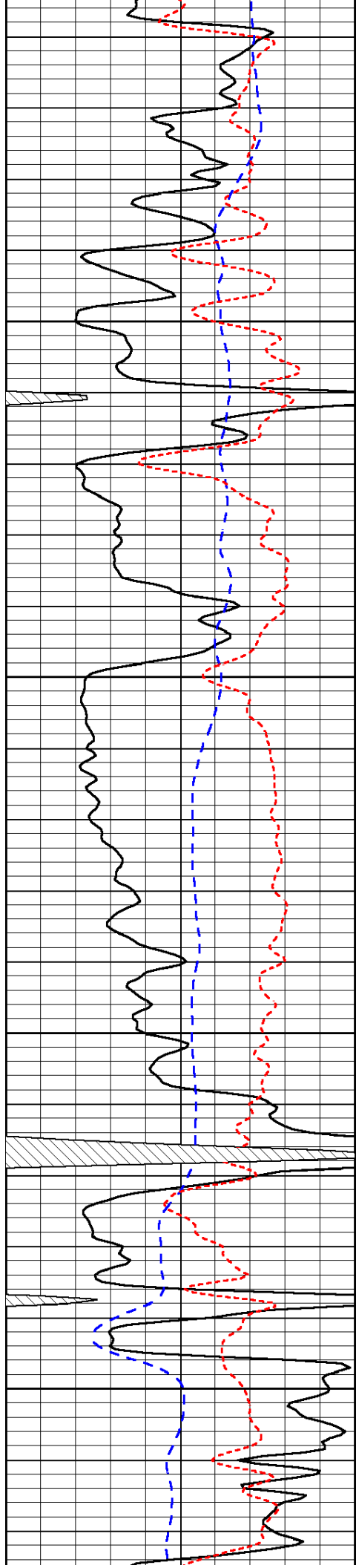
-29

-29

-29

-29

-29

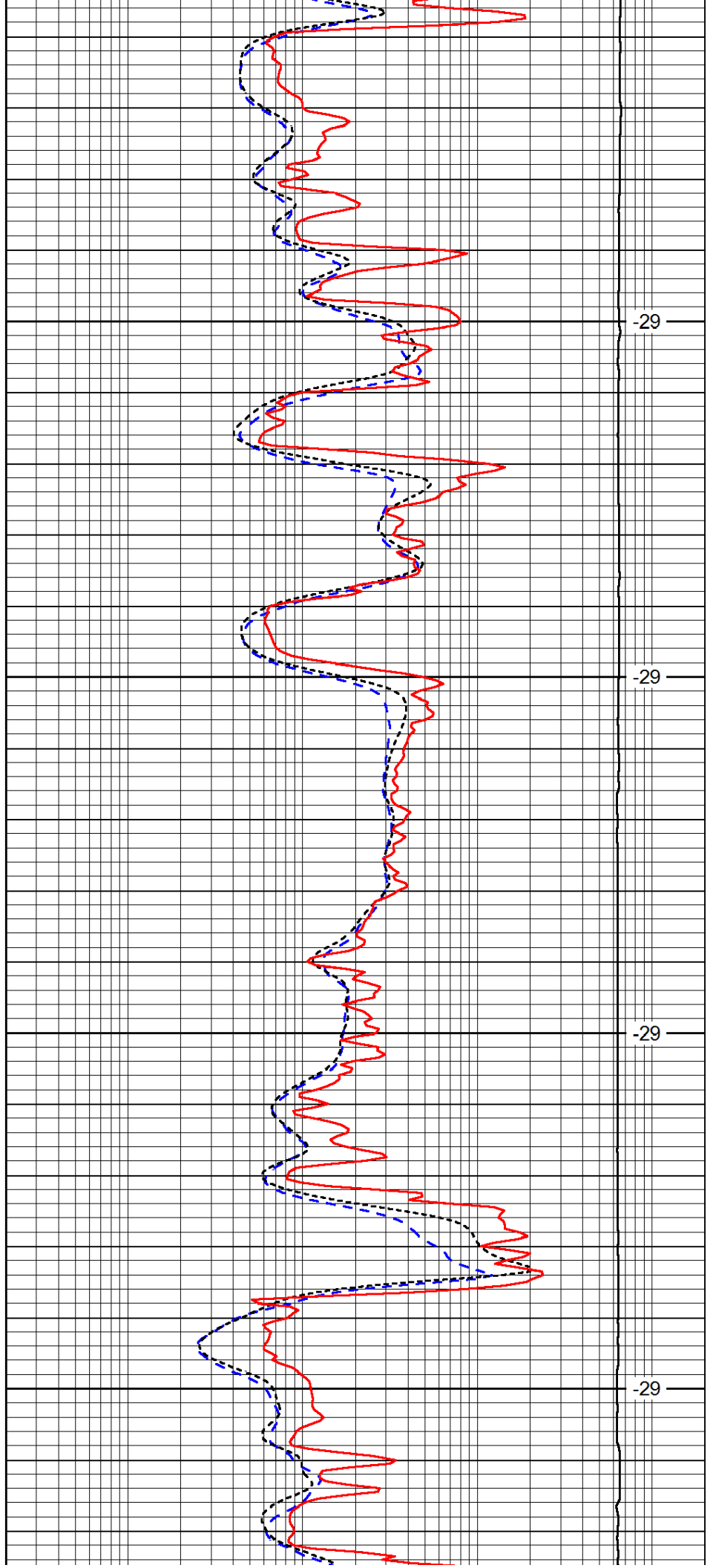


4100

4150

4200

4250

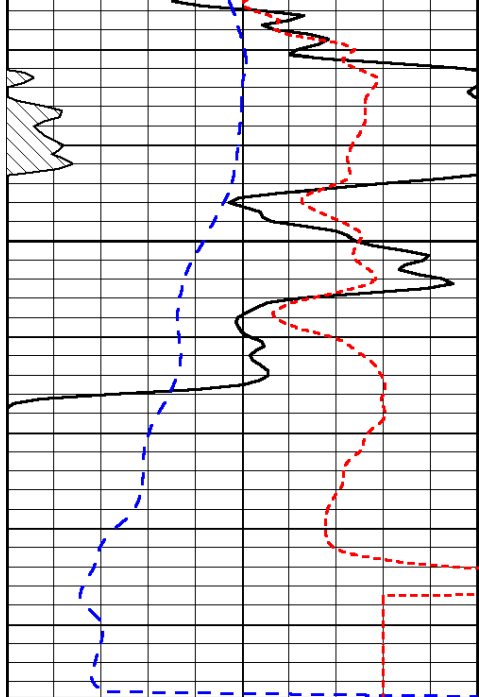


-29

-29

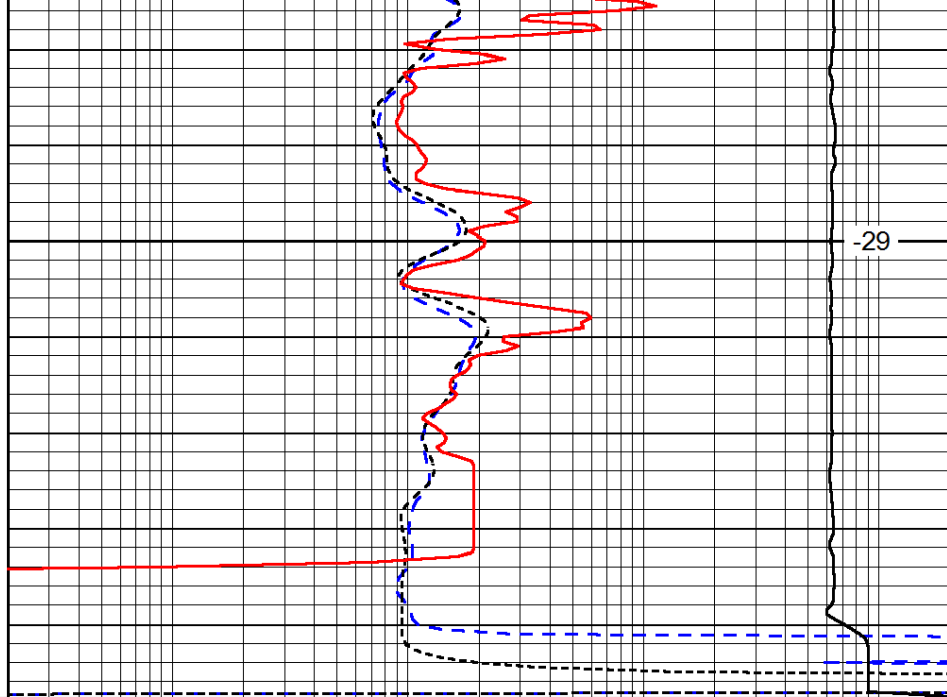
-29

-29



0	Gamma Ray	150
-200	SP (mV)	0
-160	Rxo / Rt	40

4300



0.2	Deep Resistivity	2000
0.2	Medium Resistivity	2000
0.2	Shallow Resistivity	2000
15000	Line Tension	0

LSPD