

Company: AMERICAN WARRIOR, INC.
Well: FREDIA TRUST #2-16
Field: MARGHEIM

County: NESS State: KANSAS
Location: 630FSL & 121st FWL
API #: 15-135-23398-0000

Well: FREDIA TRUST #2-16
County: NESS
State: KANSAS
Permit Number: SEC 16 TWP 19S RGE 2NW
Ground Level Elevation: 2215
Log Measured From: KELLY BUSHING 6 AGL
Drilling Measured From: KELLY BUSHING
Date: AUGUST 21, 2012

Run Number: ONE
Depth: 4330
Bottom Logged Interval: 4343
Top Log Interval: 3200

Open Hole Size: WATER
Type Fluid: WATER
Viscosity: 119F
Mass Density: 33350
Estimate Cement Top:

Time Meter Ready: P138
Time Logged on Bottom: REBEKAH SCHAEFER
Equipment Number: MRC SCOTT COORSNIR
Witnessed By:

Borehole Record
Run Number: 138
Bit: 210
From: 28
To: 4350
Size: 2 1/2
Weight: 10
Tubing Record

Cement Record
Cement Type: 440
Size: 8 5/8
Production String: 5 1/2
Bottom: 220
Top: 4346

Production String: 5 1/2
Liner: 15.5#

<<< Fold Here >>>

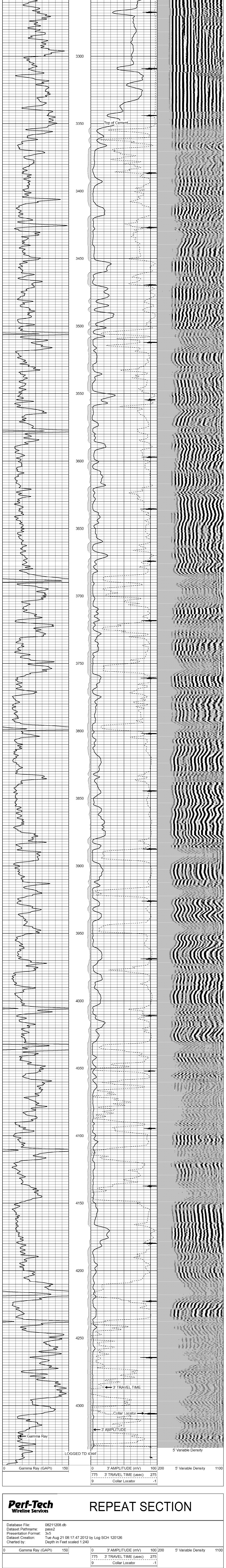
All interpretations are opinions based on inferences from electrical or other measurements and we cannot and do not guarantee the accuracy or correctness of any interpretation, and we shall not, except in the case of gross or willful negligence on our part, be liable or responsible for any loss, costs, damages, or expenses incurred or sustained by anyone resulting from any interpretation made by any of our officers, agents or employees. These interpretations are also subject to our general terms and conditions set out in our current Price Schedule.

Comments

THANKS FOR USING PERF-TECH WIRELINE
785-623-3969
BAZINE, EAST TO GG RD, 3 SOUTH, 1 EAST, 1 SOUTH,
1/2 EAST, NORTH INTO

Perf-Tech Wireline Services **MAIN PASS**

Database File: 08211208.db
Dataset Pathname: pass3
Presentation Format: 3x5
Dataset Creation: Tue Aug 21 08:23:14 2012 by Log SCH 120126
Charted by: Depth in Feet scaled 1.240



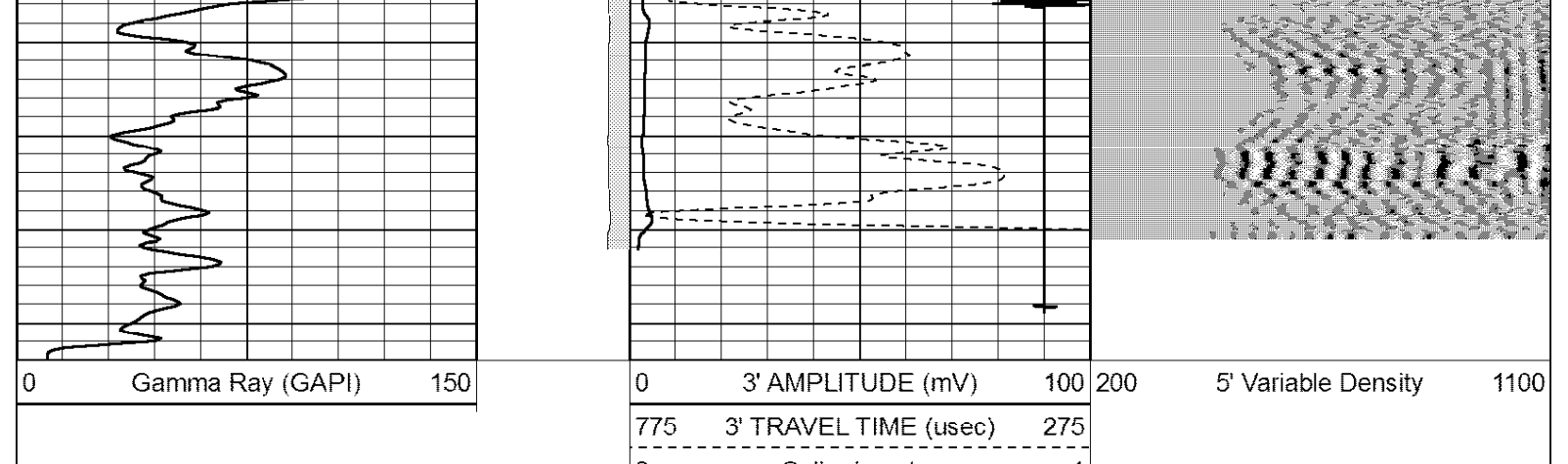
LOGGED TO 4344

0 Gamma Ray (GAPI) 150 0 3' AMPLITUDE (mV) 100 200 5' Variable Density 1100
775 3' TRAVEL TIME (uSec) 275
9 Collar Locator -1

0 Gamma Ray (GAPI) 150 0 3' AMPLITUDE (mV) 100 200 5' Variable Density 1100
775 3' TRAVEL TIME (uSec) 275
9 Collar Locator -1

Perf-Tech Wireline Services **REPEAT SECTION**

Database File: 08211208.db
Dataset Pathname: pass2
Presentation Format: 3x5
Dataset Creation: Tue Aug 21 08:17:47 2012 by Log SCH 120126
Charted by: Depth in Feet scaled 1.240



0 Gamma Ray (GAPI) 150 0 3' AMPLITUDE (mV) 100 200 5' Variable Density 1100
775 3' TRAVEL TIME (uSec) 275
9 Collar Locator -1

0 Gamma Ray (GAPI) 150 0 3' AMPLITUDE (mV) 100 200 5' Variable Density 1100
775 3' TRAVEL TIME (uSec) 275
9 Collar Locator -1