

Company: AMERICAN WARRIOR, INC.  
Well: STRECKER NO. 4-6  
Field: DEWALD NORTH  
County: NESS  
State: KANSAS  
Location: 1887 FSL & 650 FWL  
AP# #: 15-135-2535-0000  
Other Services: SEC 6 TWP 19 S RGE 21 W  
Permanent Datum: GROUND LEVEL Elevation: 2134  
Log Measured From: K&B 6 AGL  
Drilling Measured From: KELLY BUSHING  
Date: MAY 16, 2012  
Run Number: ONE  
Depth Logger: 4259  
Bottom Logger: 4259  
Bottom Log Interval: 4259

Open Hole Size: WATER  
Estimated Cement Top: 3040  
Time Well Ready: FI-45  
Equipment Number: HAYS  
Logged By: BRAD LEMKER  
Witnessed By: MR SCOTT COUSHAR  
Run Number: ONE  
Run Date: 7/2/05  
TWS: 7.8/75  
Casing Record: Size 8.98  
Casing String: 00  
Production String: 5.12  
Liner: 00

Estimated Cement Top: 3040  
Time Well Ready: FI-45  
Equipment Number: HAYS  
Logged By: BRAD LEMKER  
Witnessed By: MR SCOTT COUSHAR  
Run Number: ONE  
Run Date: 7/2/05  
TWS: 7.8/75  
Casing Record: Size 8.98  
Casing String: 00  
Production String: 5.12  
Liner: 00

<<< Fold Here >>>

All interpretations are opinions based on inferences from electrical or other measurements and we cannot and do not guarantee the accuracy or correctness of any interpretation, and we shall not, except in the case of gross or willful negligence on our part, be liable or responsible for any loss, costs, damages, or expenses incurred or sustained by anyone resulting from any interpretation made by any of our offices, agents or employees. These interpretations are also subject to our general terms and conditions set out in our current Price Schedule.

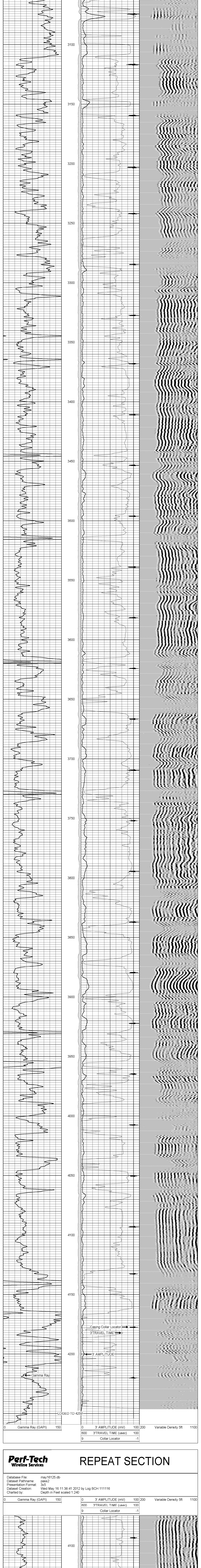
Comments

THANK YOU FOR USING  
PERF-TECH WIRELINE SERVICES, INC.  
(785) 628-3969

BAZINE KS, 1 1/2 SOUTH,  
1/4 EAST TO TANK BATTERIES, NORTH INTO

**Perf-Tech** Wireline Services **MAIN PASS**

Database File: may16125.db  
Dataset Pathname: pass3  
Presentation Format: 3x5  
Dataset Creation: Wed May 16 11:46:16 2012 by Log SCH 111116  
Charted by: Depth in Feet scaled 1.240



**Perf-Tech** Wireline Services **REPEAT SECTION**

Database File: may16125.db  
Dataset Pathname: pass2  
Presentation Format: 3x5  
Dataset Creation: Wed May 16 11:39:41 2012 by Log SCH 111116  
Charted by: Depth in Feet scaled 1.240

