



SUPERIOR
Hays,
Kansas

MICRO
LOG

Company PFEIFER EXPLORATIONS, LLC.
Well HASELHORST #15-1
Field WILD CAT
County ELLIS
State KANSAS

Company PFEIFER EXPLORATIONS, LLC.
Well HASELHORST #15-1
Field WILD CAT
County ELLIS State KANSAS

Location: API # : 15-051-26366-0000
1200' FNL & 430' FWL
SE - SW - NW - NW
SEC 15 TWP 15S RGE 19W
Permanent Datum GROUND LEVEL Elevation 2002.8
Log Measured From KELLY BUSHING 8.5' A.G.L.
Drilling Measured From KELLY BUSHING
Other Services
CDL/CNL
DIL
Elevation
K.B. 2011.3
D.F. 2009.3
G.L. 2002.8

Date	9/12/12		
Run Number	TWO		
Depth Driller	3730		
Depth Logger	3728		
Bottom Logged Interval	3726		
Top Log Interval	2900		
Casing Driller	8 5/8"@1219'		
Casing Logger	1220		
Bit Size	7 7/8"		
Type Fluid in Hole	CHEMICAL MUD	CHLORIDES 9,500 PPM	
Density / Viscosity	9.1/48		
pH / Fluid Loss	10.0/10.0		
Source of Sample	FLOWLINE		
Rm @ Meas. Temp	.650@76F		
Rmt @ Meas. Temp	.486@76F		
Rmc @ Meas. Temp	.780@76F		
Source of Rmf / Rmc	MEASUREMENT		
Rm @ BHT	.433@114F		
Time Circulation Stopped	3.5 HOURS		
Time Logger on Bottom	1:30 A.M.		
Maximum Recorded Temperature	114F		
Equipment Number	4010		
Location	HAYS, KANSAS		
Recorded By	JEFF LUEBBERS		
Witnessed By	ROGER MOSES	JAY PFEIFER	

<<< Fold Here >>>

All interpretations are opinions based on inferences from electrical or other measurements and we cannot and do not guarantee the accuracy or correctness of any interpretation, and we shall not, except in the case of gross or willful negligence on our part, be liable or responsible for any loss, costs, damages, or expenses incurred or sustained by anyone resulting from any interpretation made by any of our officers, agents or employees. These interpretations are also subject to our general terms and conditions set out in our current Price Schedule.

Comments

THANK YOU FOR USING SUPERIOR WELL SERVICE HAYS, KANSAS (785) 628-6395
DIRECTIONS
ANTONINO, KS. 2W., 2 1/4S., E. INTO

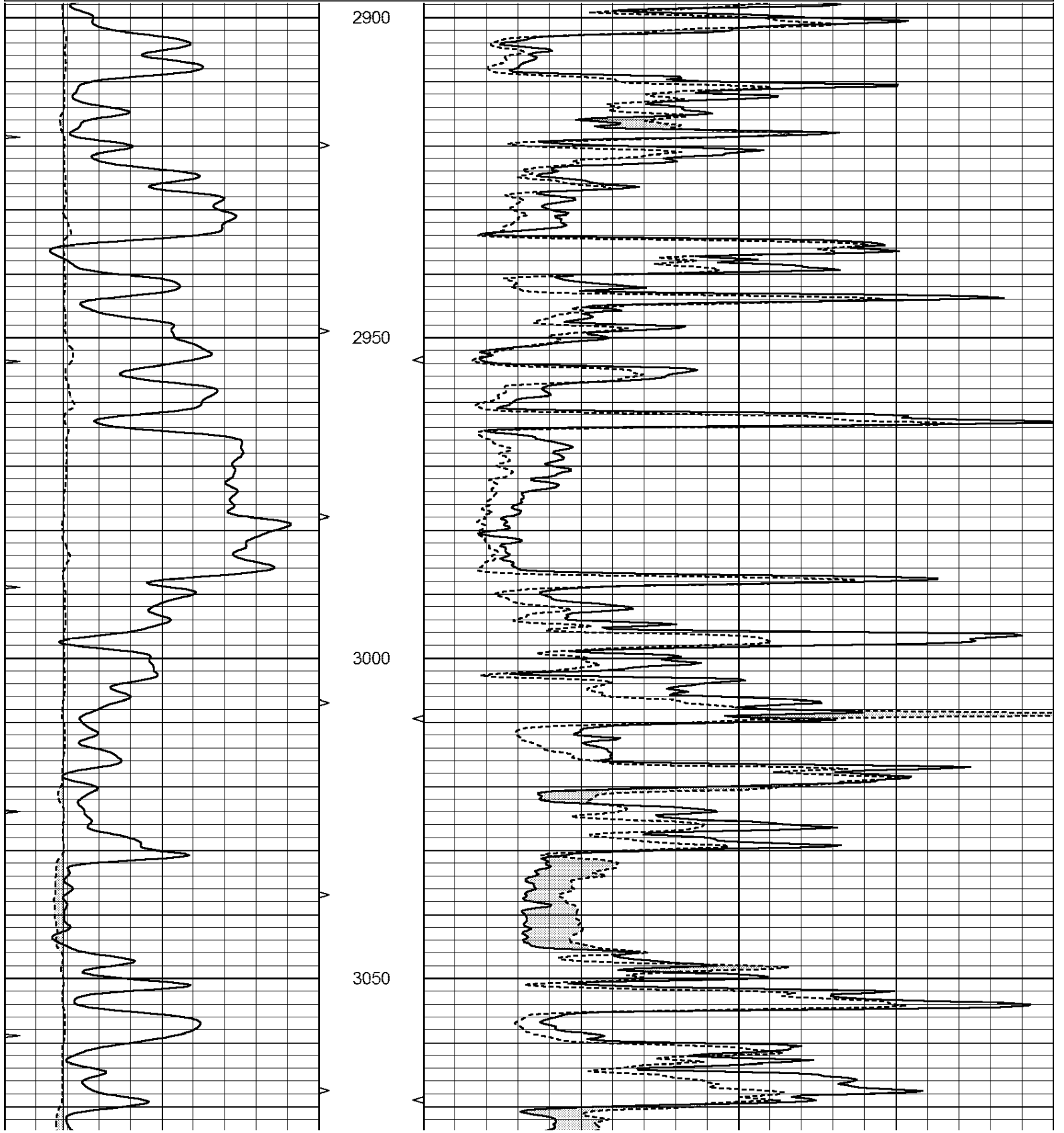


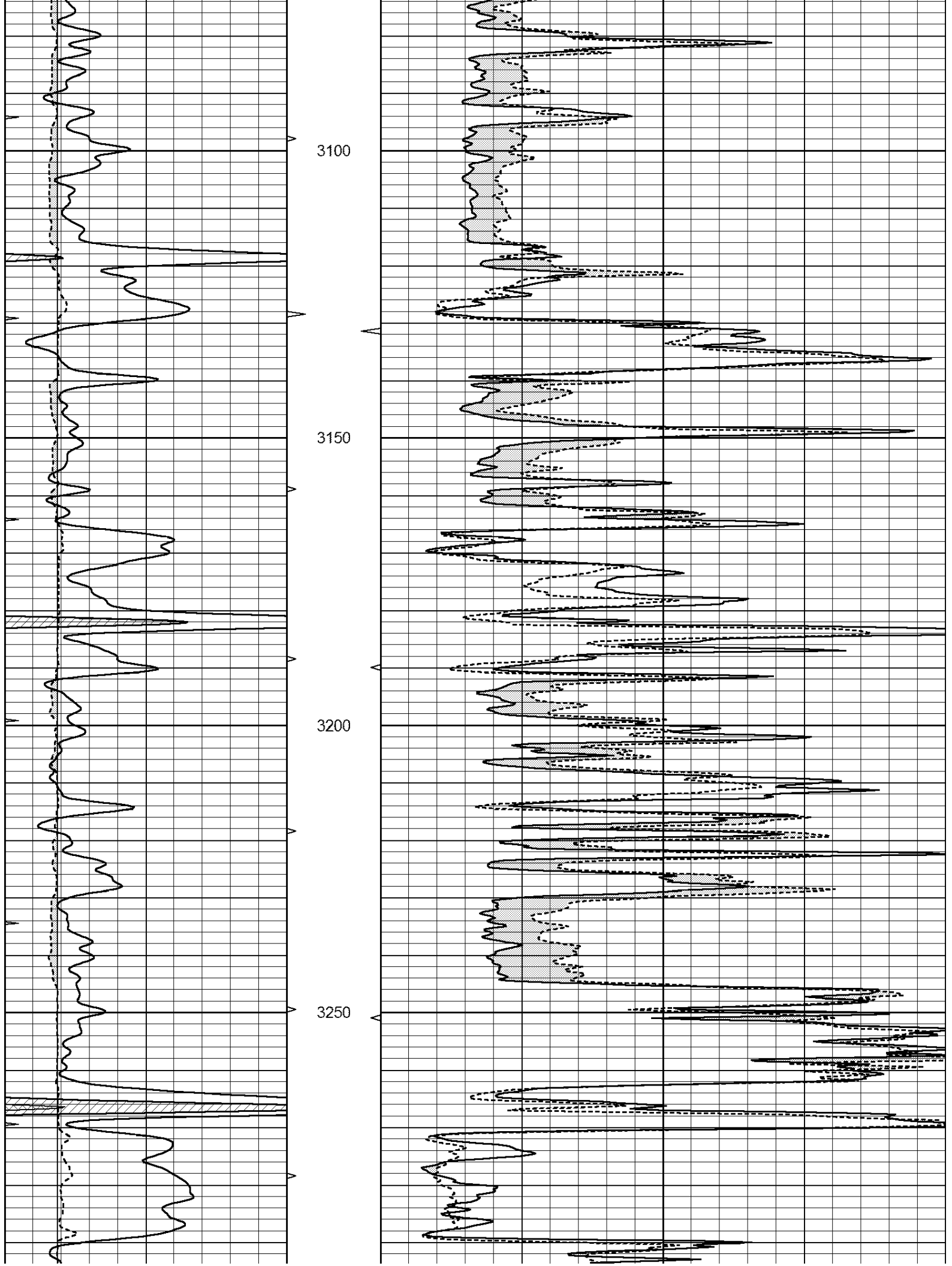
SUPERIOR
Hays,
Kansas

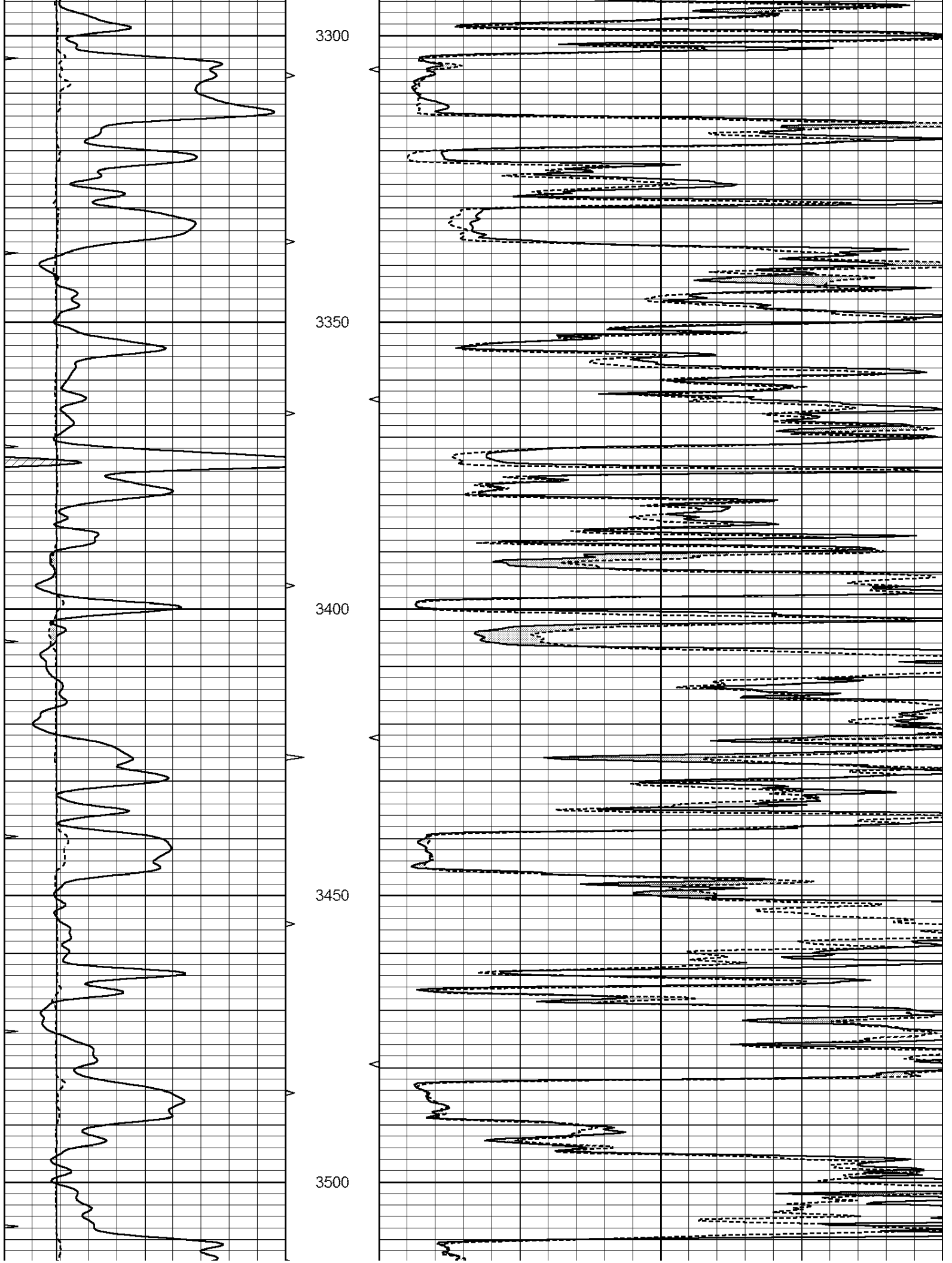
MAIN SECTION

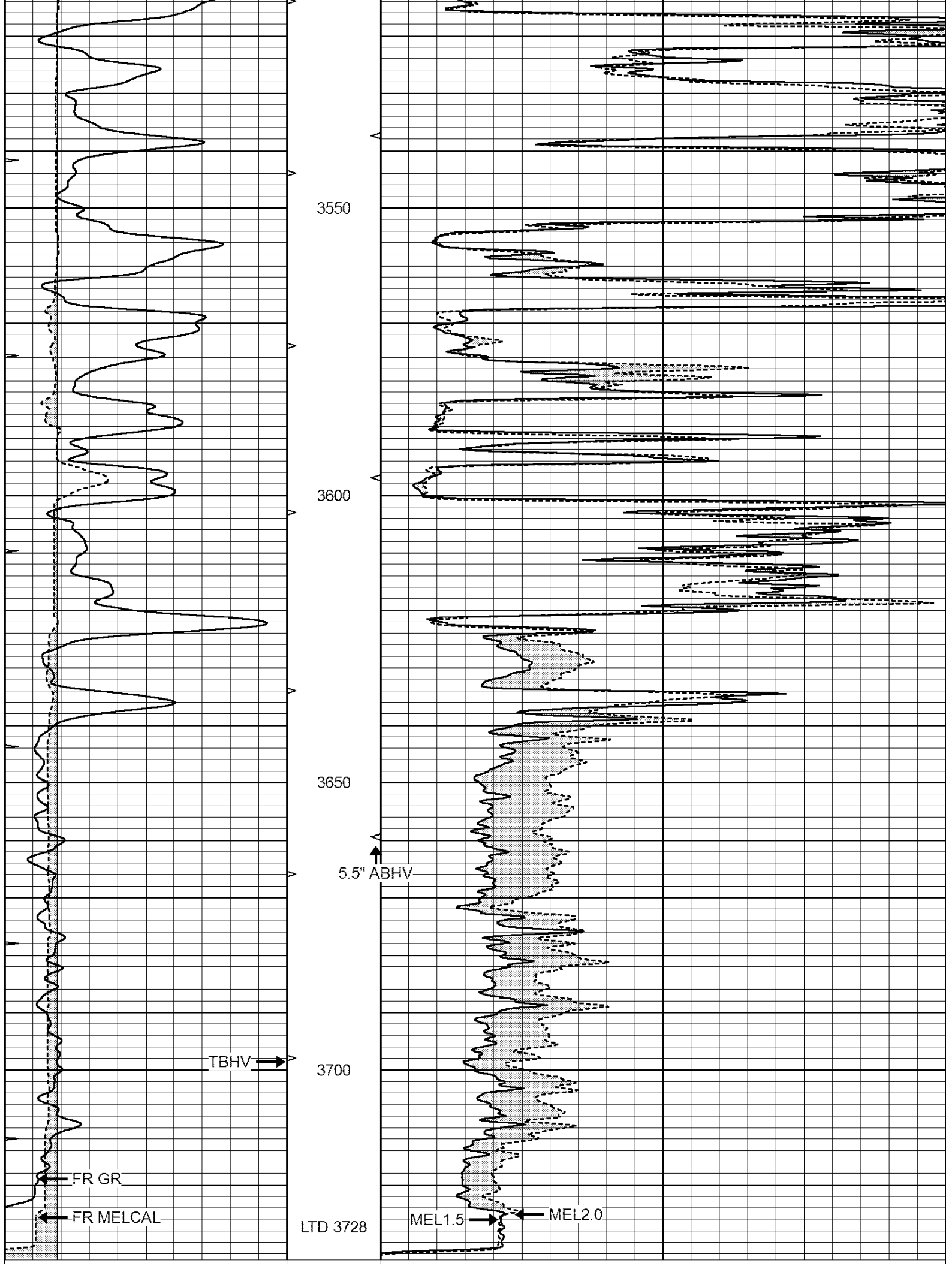
Database File: 409522ddn.db
 Dataset Pathname: pass6.2
 Presentation Format: micro
 Dataset Creation: Wed Sep 12 04:38:05 2012 by Calc Open-Cased 110302
 Charted by: Depth in Feet scaled 1:240

0	GAMMA RAY (GAPI)	150	ABHV	0	MEL1.5 (Ohm-m)	20
6	CALIPER (in)	16	10 (ft3)	0	MEL2.0 (Ohm-m)	20
0	MINMK	20	TBHV			
			0 (ft3)	10		





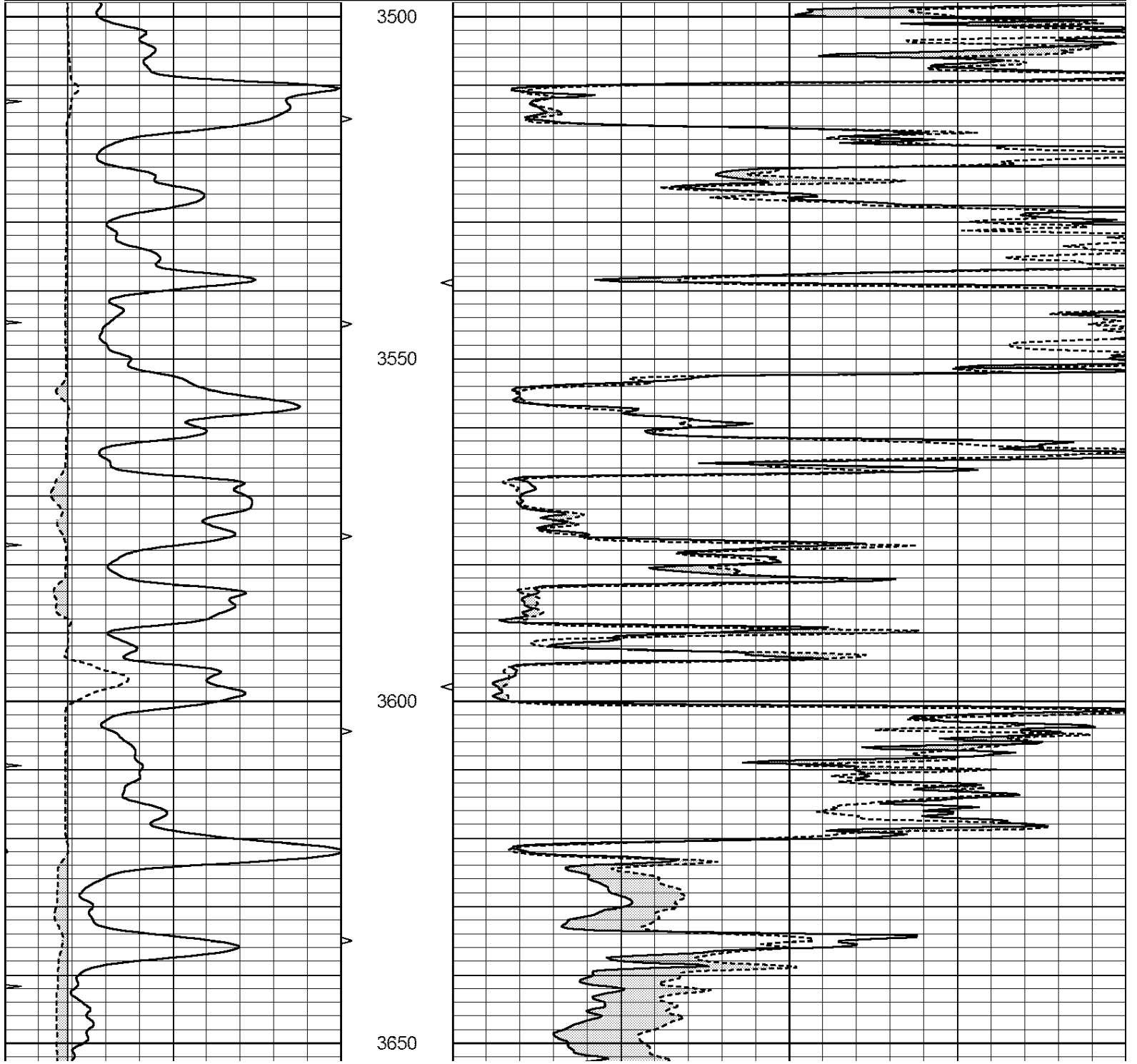


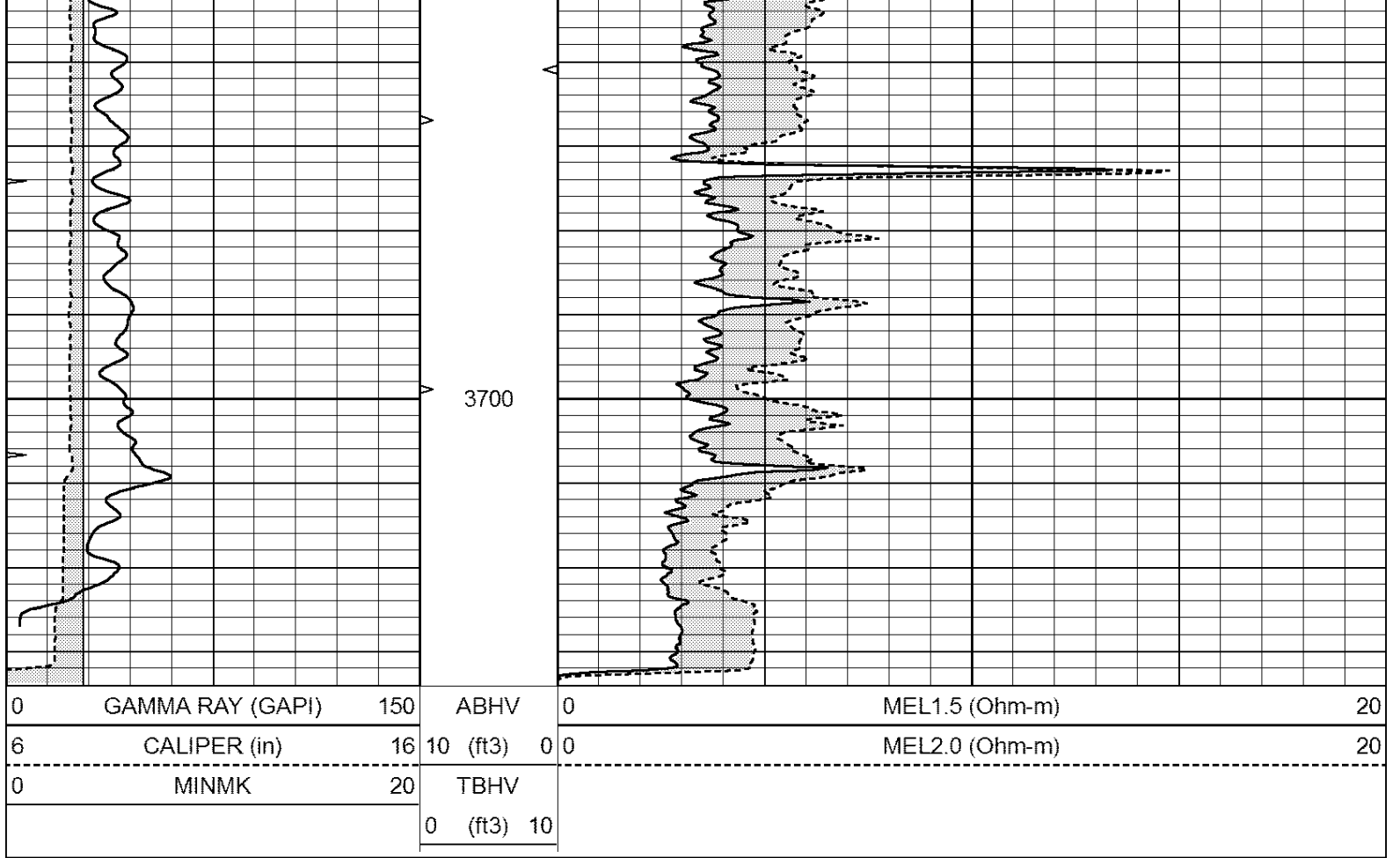


0	GAMMA RAY (GAPI)	150	ABHV	0	MEL1.5 (Ohm-m)	20
6	CALIPER (in)	16	10 (ft3)	0	MEL2.0 (Ohm-m)	20
0	MINMK	20	TBHV			
			0 (ft3)	10		

Database File: 409522ddn.db
 Dataset Pathname: pass5.2
 Presentation Format: micro
 Dataset Creation: Wed Sep 12 03:59:51 2012 by Calc Open-Cased 110302
 Charted by: Depth in Feet scaled 1:240

0	GAMMA RAY (GAPI)	150	ABHV	0	MEL1.5 (Ohm-m)	20
6	CALIPER (in)	16	10 (ft3)	0	MEL2.0 (Ohm-m)	20
0	MINMK	20	TBHV			
			0 (ft3)	10		





Calibration Report

Database File: 409522ddn.db
 Dataset Pathname: pass6.2
 Dataset Creation: Wed Sep 12 04:38:05 2012 by Calc Open-Cased 110302

MICRO Calibration Report

Serial Number: 2
 Tool Model: PROBE
 Performed: Wed Sep 12 03:33:23 2012

Caliper Calibration: Gain=3.988 Offset=3.692
 References Low Cal High Cal
 Readings 8.200 15.000
 1.130 2.835

1.5" Calibration: Gain=22.000 Offset=0.000
 References Low Cal High Cal
 Readings 0.000 20.000
 0.065 1.210

2" Calibration: Gain=38.000 Offset=0.000
 References Low Cal High Cal
 Readings 0.000 20.000
 0.012 1.043

Gamma Ray Calibration Report

Serial Number: GR4
 Tool Model: OPEN
 Performed: Wed Sep 12 04:00:24 2012

Calibrator Value:	200.0	GAPI
Background Reading:	0.0	cps
Calibrator Reading:	189.0	cps
Sensitivity:	1.3000	GAPI/cps