



MIDWEST SURVEYS
 LOGGING - PERFORATING - CONSULTING SERVICES
 P.O. Box 68, Osawatomie, KS 66064
 913 / 755 - 2128

GAMMA RAY / NEUTRON / CCL

File No.

Company **RJ Enterprises**

Well **Stewart No. 5-1**

Field **Davis / Bronson**

County **Bourbon** State **Kansas**

Location **2308' FSL & 4142' FEL**

Other Services **SE-NE-NW-SW**

Perforate

Sec. 2 Permament Datum Log Measured From Drilling Measured From

Typ 24s Rge 21e Elevation NA

GL GL GL KB NA D.F. NA G.L. NA

Date 07-23-2012

Run Number One

Depth Drier 731.0

Depth Logger 725.0

Bottom Logged Interval 724.0

Top Log Interval 20.0

Fluid Level Full

Type Fluid Water

Density / Viscosity NA

Salinity - PPM Cl NA

Max Recorded Temp NA

Estimated Cement Top 0.0

Equipment No. Location 104 Osawatomie

| BORE-HOLE RECORD | | | | CASING RECORD | | | |
|------------------|--------|------|-------|---------------|------|------|-------|
| RUN | BIT | FROM | TO | SIZE | WGT. | FROM | TO |
| One | 9.875" | 0.0 | 20.0 | 7.00" | | 0.0 | 20.0 |
| Two | 5.625" | 20.0 | 731.0 | 2.875" | | 0.0 | 725.3 |

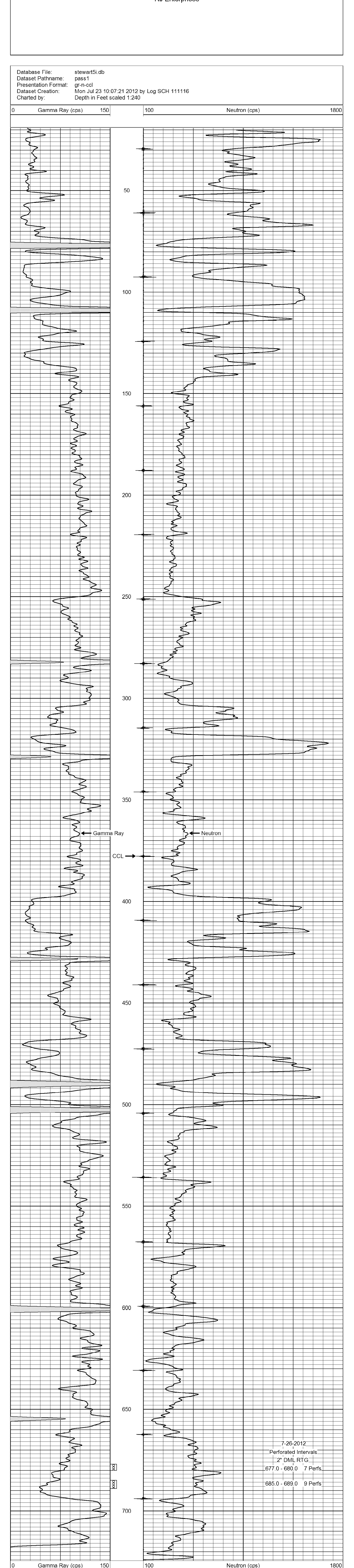
<<< Fold Here >>>

All interpretations are opinions based on inferences from electrical or other measurements and we cannot and do not guarantee the accuracy or correctness of any interpretation, and we shall not, except in the case of gross or willful negligence on our part, be liable or responsible for any loss, costs, damages, or expenses incurred or sustained by anyone resulting from any interpretation made by any of our officers, agents or employees. These interpretations are also subject to our general terms and conditions set out in our current Price Schedule.

Comments

Drilling Contractor : RJ Enterprises

Database File: stewart5i.db
 Dataset Pathname: pass1
 Presentation Format: gr-n-ccl
 Dataset Creation: Mon Jul 23 10:07:21 2012 by Log SCH 111116
 Charted by: Depth in Feet scaled 1:240



7-26-2012
 Perforated Intervals
 2" DML RTG
 677.0 - 680.0 7 Perfs.
 685.0 - 689.0 9 Perfs.