



MIDWEST SURVEYS
 LOGGING - PERFORATING - CONSULTING SERVICES
 P.O. Box 68, Osawatomie, KS 66064
 913 / 755 - 2128

GAMMA RAY / NEUTRON / CCL

File No.

Company **JTC Oil, Inc.**

Well **Ralph Nickell Sr. No. - 33**

Field **Goodrich - Parker**

County **Linn** State **Kansas**

Location **4600' FSL & 2305' FEL**

Other Services
Perforate

Sec. **21** Twp. **20S** Rge. **22E**

Permanent Datum **GL** Elevation **NA**

Log Measured From **GL**

Drilling Measured From **GL**

Elevation
 K.B. NA
 D.F. NA
 G.L. NA

Date

03-10-2012

Run Number

One

Depth Driller

618.0

Depth Logger

590.8

Bottom Logged Interval

589.8

Top Log Interval

20.0

Fluid Level

Full

Type Fluid

Water

Density / Viscosity

NA

Salinity - PPM Cl

NA

Max. Recorded Temp

NA

Estimated Cement Top

0.0

Equipment No.

107

Location

Osawatomie

Recorded By

Steve Winkisch

Witnessed By

Tom Cain

BORE-HOLE RECORD

NO. BIT FROM TO SIZE WGT. FROM TO

One 8.75" 0.0 21.0 7.00" 0.0 21.0

Two 5.625" 21.0 618.0 2.875" 0.0 591.25

CASING RECORD

NO. BIT FROM TO

One 8.75" 0.0 21.0

Two 5.625" 21.0 618.0

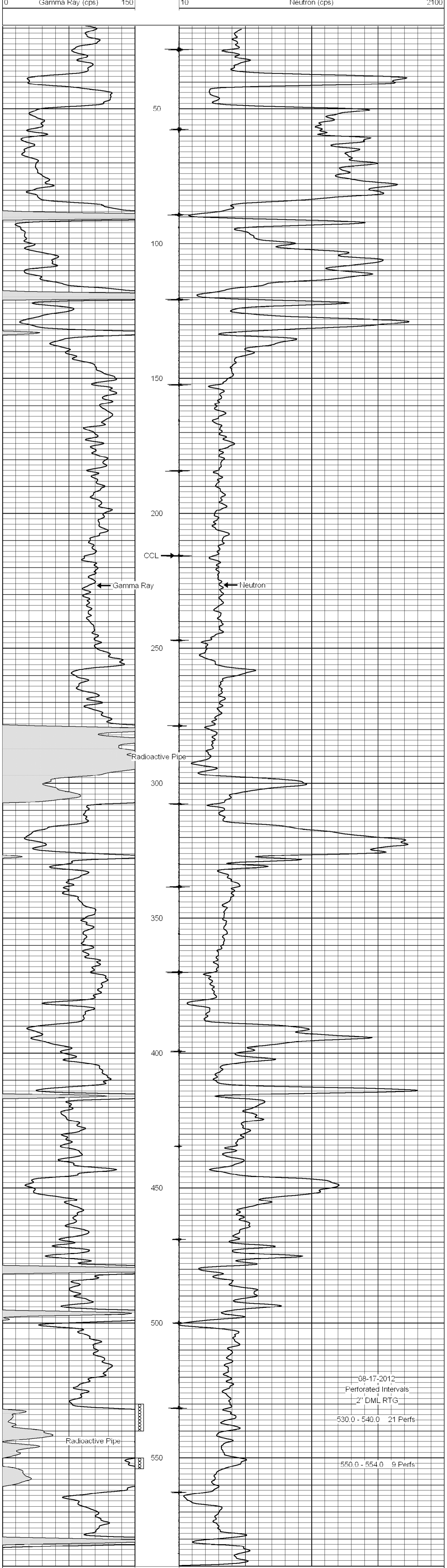
<<< Fold Here >>>

All interpretations are opinions based on inferences from electrical or other measurements and we cannot and do not guarantee the accuracy or correctness of any interpretation, and we shall not, except in the case of gross or willful negligence on our part, be liable or responsible for any loss, costs, damages, or expenses incurred or sustained by anyone resulting from any interpretation made by any of our officers, agents or employees. These interpretations are also subject to our general terms and conditions set out in our current Price Schedule.

Comments

Drilling Contractor :
 JTC Oil, Inc.

Database File: nickell33sr.db
 Dataset Pathname: pass1
 Presentation Format: gr-n-col
 Dataset Creation: Fri Aug 10 09:15:07 2012 by Log SCH 111116
 Charted by: Depth in Feet scaled 1:240



08-17-2012
 Perforated Intervals
 2" DML RTG
 530.0 - 540.0 21 Perfs
 550.0 - 554.0 9 Perfs