



(785) 625-3858

Sonic Cement
Bond Log

15-009-25699-00-00

API No.

Company Reif Oil & Gas Company

Well Deckert No.2

Field

County Pawnee State Kansas

Location

1130' FSL & 1195' FEL

Sec: 36 Twp: 20S Rge: 16W

Permanent Datum Ground Level Elevation 1989
 Log Measured From Kelly Bushing 7 Ft. Above Perm. Datum
 Drilling Measured From Kelly Bushing

Other Services
 Mast Trailer
 Elevation
 K.B. 1996
 D.F.
 G.L. 1989

Run Number One

Date Survey 7/11/2012

Date Cementing 7/5/2012

Type Cementing Operation Primary

Depth Driller 3870

Depth Logger 3848

Logged Interval 3846 to 2850

Casing Driller 5.5 @ T.D.

Float Collar -- D.V. Tool 5.5 @

Squeeze Depth

Amount & Type Cement

Amount & Type Admix

Type Fluid In Hole Water

Fluid Level Full

Salinity PPM CL

Weight lb/gal -- Vis. 3025

Approx. Logged Cement Top

Calculated Cement Top

Max. Hole Temperature 117

Tool No. D-1

Spacing Recorded 3-5

Equipment -- Location 72 Hays

Recorded By K. Ladrigan

Witnessed By Gerald Achatz

<<< Fold Here >>>

All interpretations are opinions based on inferences from electrical or other measurements and we cannot and do not guarantee the accuracy or correctness of any interpretation, and we shall not, except in the case of gross or willful negligence on our part, be liable or responsible for any loss, costs, damages, or expenses incurred or sustained by anyone resulting from any interpretation made by any of our officers, agents or employees. These interpretations are also subject to our general terms and conditions set out in our current Price Schedule.

Comments

Thank you for using Log-Tech (785) 625-3858

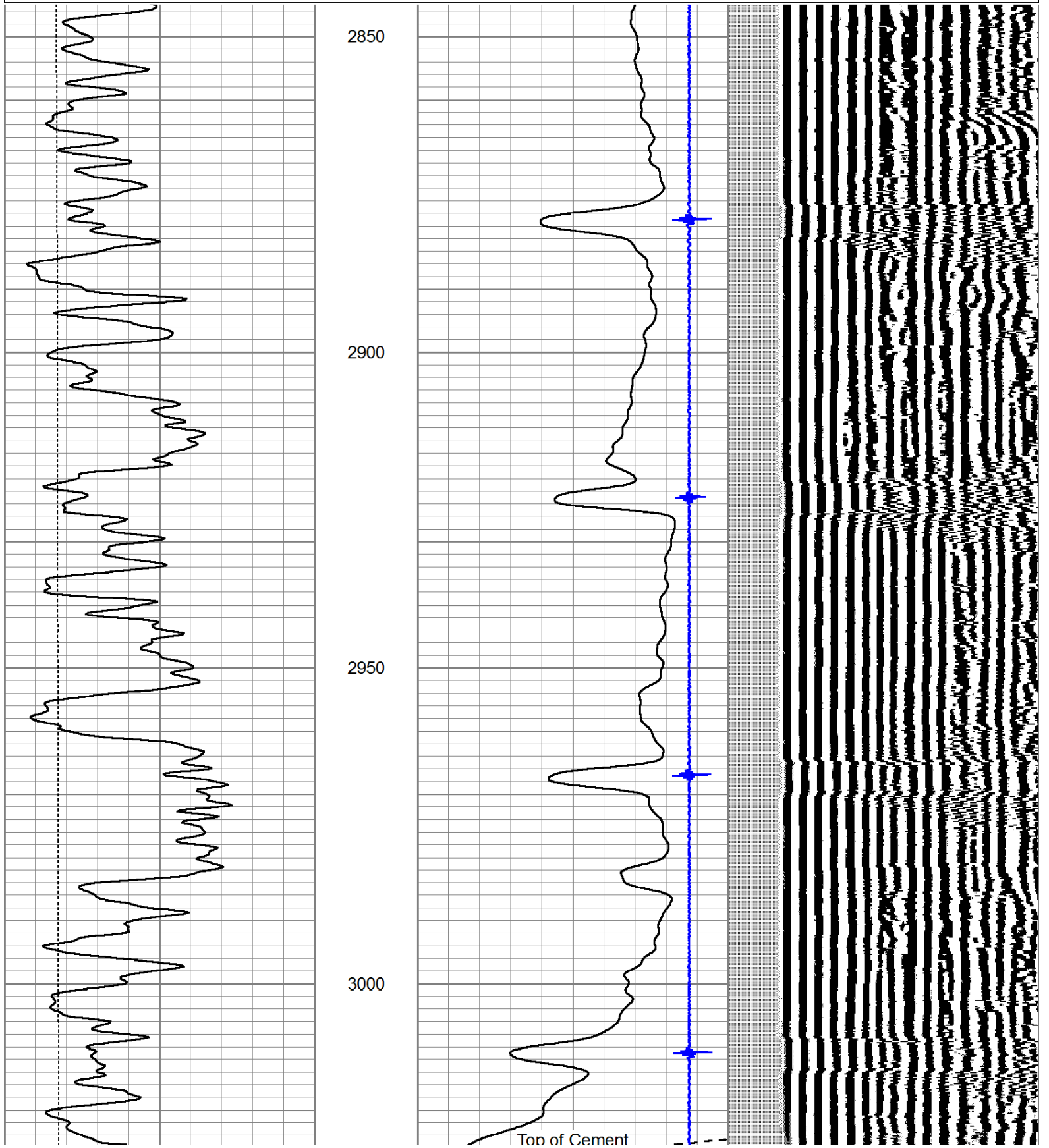
Pawnee Rock, KS, SW to SW 70 Road, West on SW 70 Road to SW 140 Road
 .25 North, West and South Into.

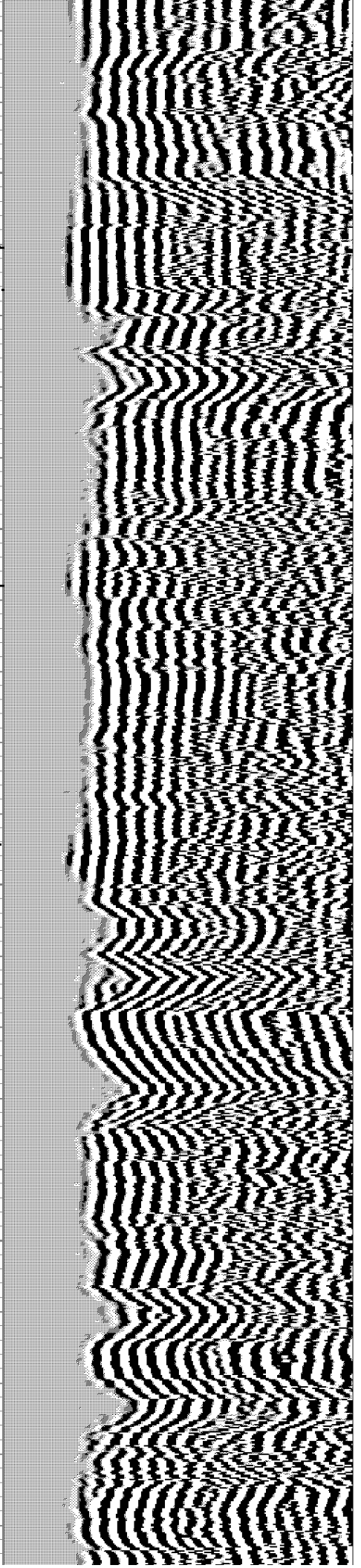
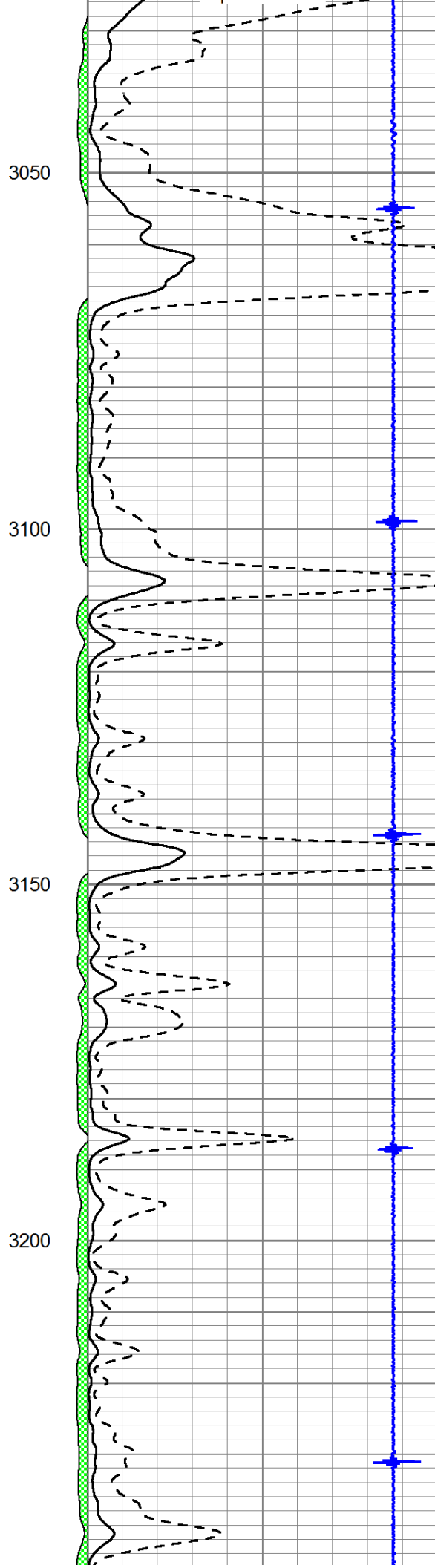
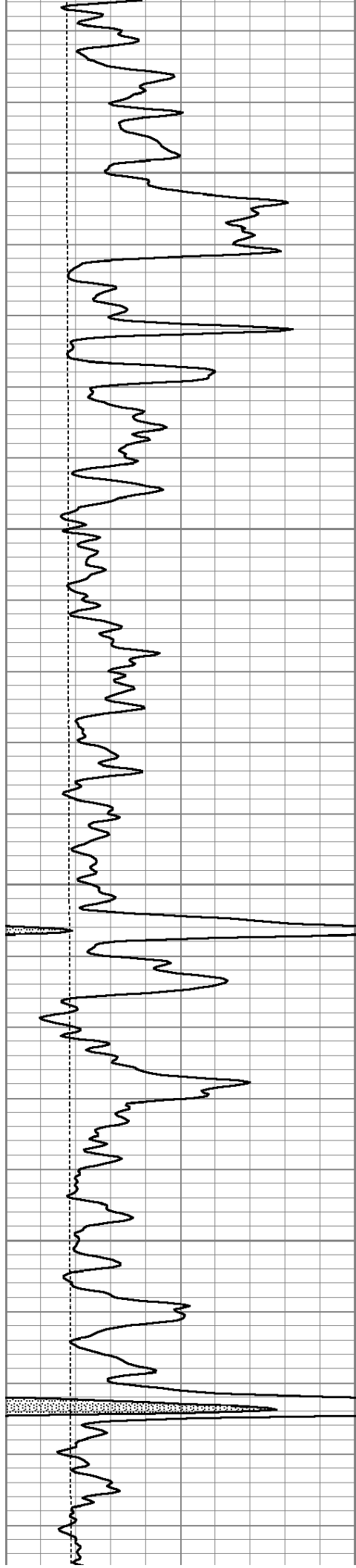


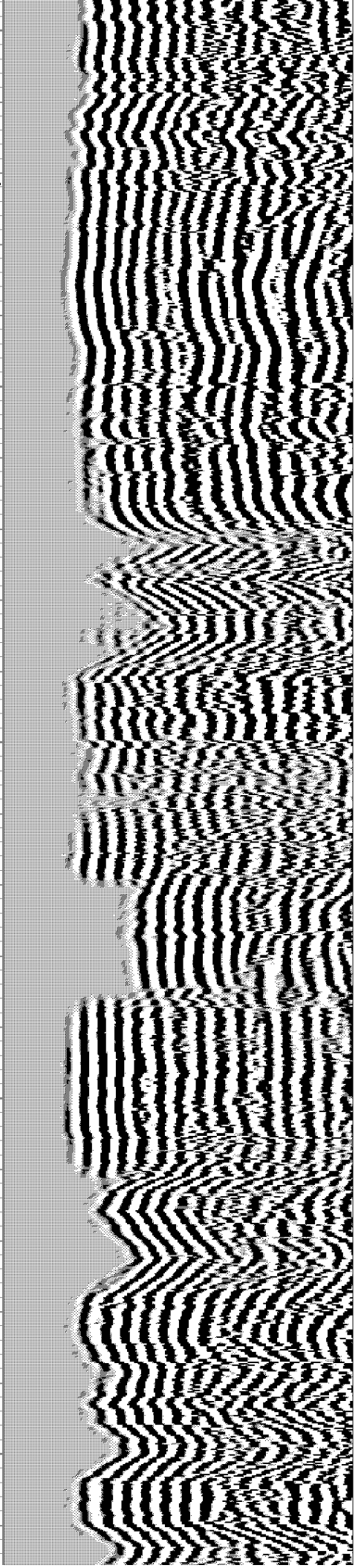
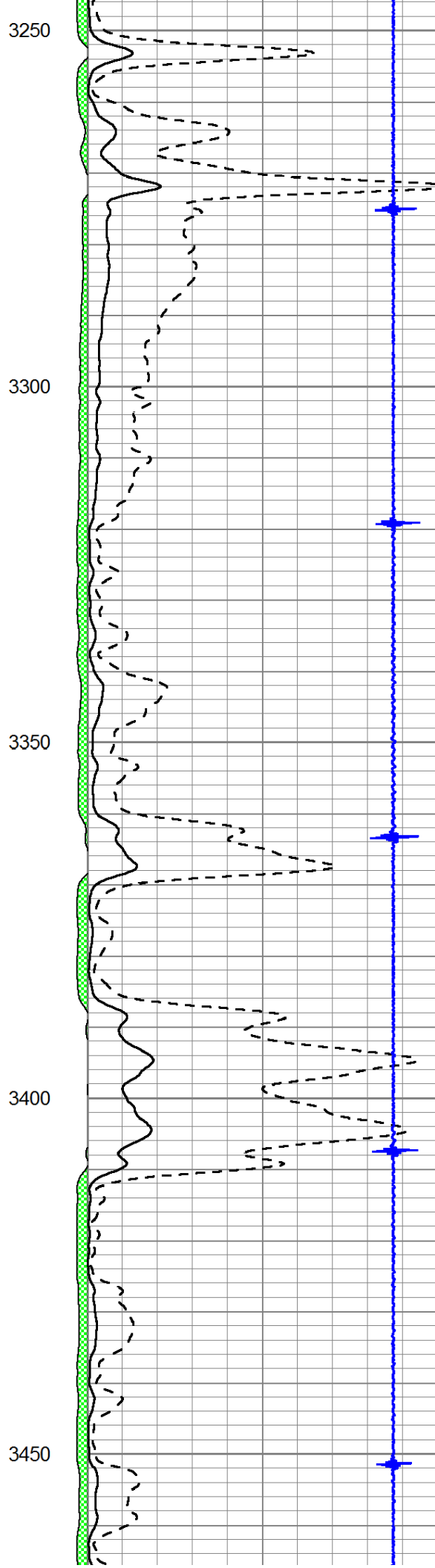
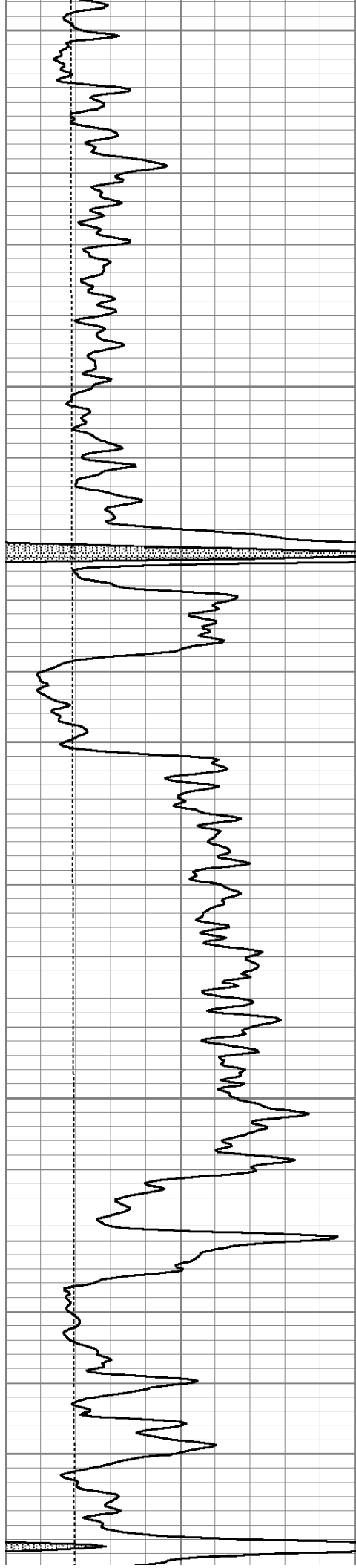
Main Pass

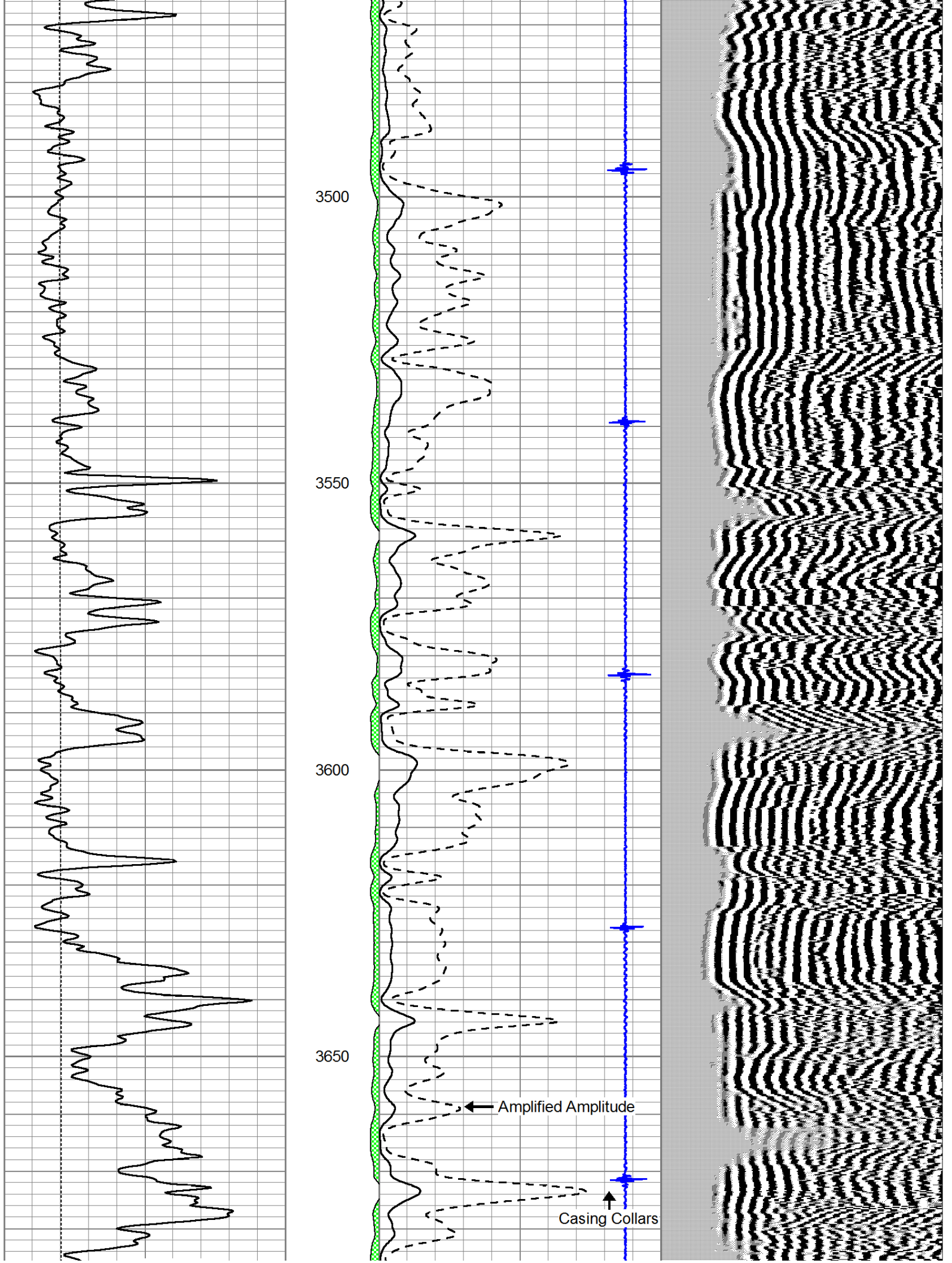
Database File: reif-deckert2.db
 Dataset Pathname: grcb1/run1/pass4.1
 Presentation Format: cldig
 Dataset Creation: Wed Jul 11 17:09:03 2012
 Charted by: Depth in Feet scaled 1:240

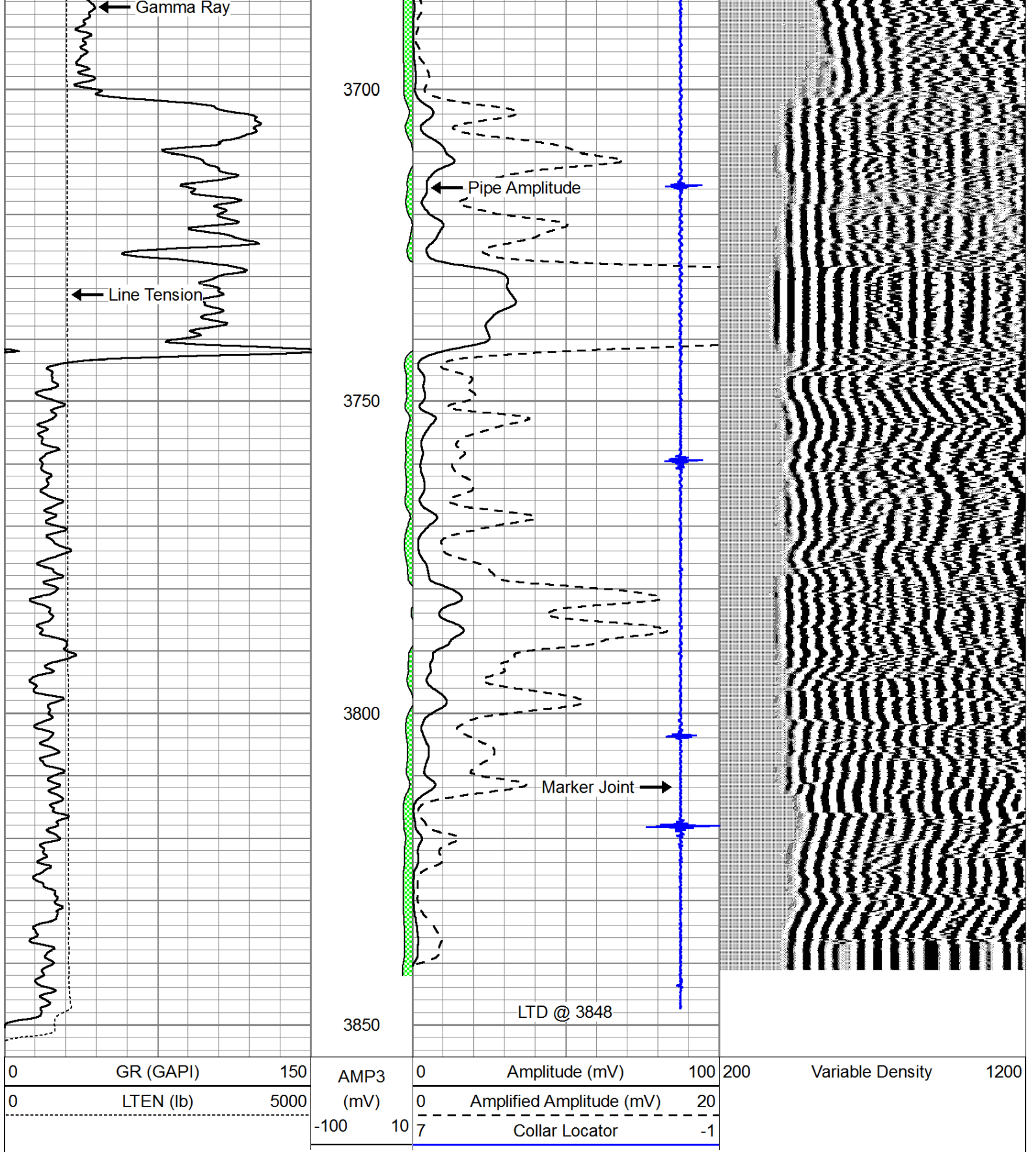
0	GR (GAPI)	150	AMP3	0	Amplitude (mV)	100	200	Variable Density	1200
0	LTEN (lb)	5000	(mV)	0	Amplified Amplitude (mV)	20			
			-100 10	7	Collar Locator	-1			



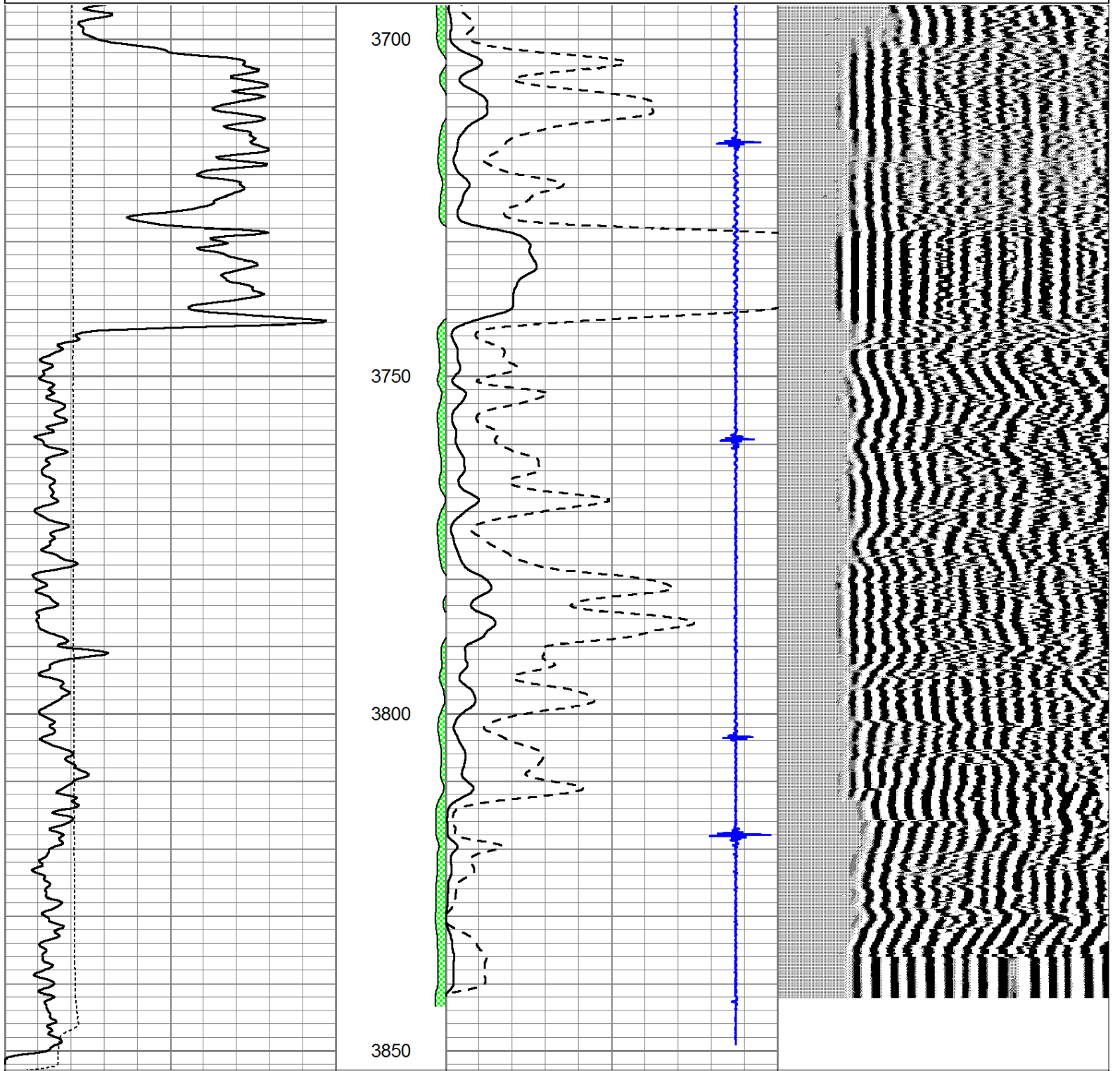








0	GR (GAPI)	150	AMP3	0	Amplitude (mV)	100	200	Variable Density	1200
0	LTEN (lb)	5000	(mV)	0	Amplified Amplitude (mV)	20			
			-100 10	7	Collar Locator	-1			



0	GR (GAPI)	150	AMP3	0	Amplitude (mV)	100	200	Variable Density	1200
0	LTEN (lb)	5000	(mV)	0	Amplified Amplitude (mV)	20			
			-100 10	7	Collar Locator	-1			