



DIGITAL LOG (785) 625-3858

Dual Compensated Porosity Log

15-083-21,806-00-00

API No. 15-083-21,806-00-00

Company American Warrior, Inc.
 Well Korf No. 5-7
 Field Sebes West
 County Hodgeman State Kansas

Location SE NW NW SE
 2,238' FSL & 2,000' FEL

Sec: 7 Twp: 23S Rge: 22W

Other Services
 DIL
 MEL

Permanent Datum Ground Level Elevation 2253
 Log Measured From Kelly Bushing 13 Ft. Above Perm. Datum
 Drilling Measured From Kelly Bushing

Elevation
 K.B. 2266
 D.F.
 G.L. 2253

Date	7/9/2012					
Run Number	One					
Type Log	CNL / CDL					
Depth Driller	4516					
Depth Logger	4513					
Bottom Logged Interval	4492					
Top Logged Interval	3700					
Type Fluid In Hole	Chemical					
Salinity, PPM CL	3400					
Density Level	9.3					
Level	Full					
Max. Rec. Temp. F	121					
Operating Rig Time	4 Hours					
Equipment -- Location	108 Hays					
Recorded By	J. Long					
Witnessed By	Harley Sayles					
Borehole Record			Casing Record			
Run No.	Bit	From	To	Size	Wgt.	To
1	12.25	00	1020	8.625	24#	1020
2	7.875	1020	4516			

<<< Fold Here >>>

All interpretations are opinions based on inferences from electrical or other measurements and we cannot and do not guarantee the accuracy or correctness of any interpretation, and we shall not, except in the case of gross or willful negligence on our part, be liable or responsible for any loss, costs, damages, or expenses incurred or sustained by anyone resulting from any interpretation made by any of our officers, agents or employees. These interpretations are also subject to our general terms and conditions set out in our current Price Schedule.

Comments

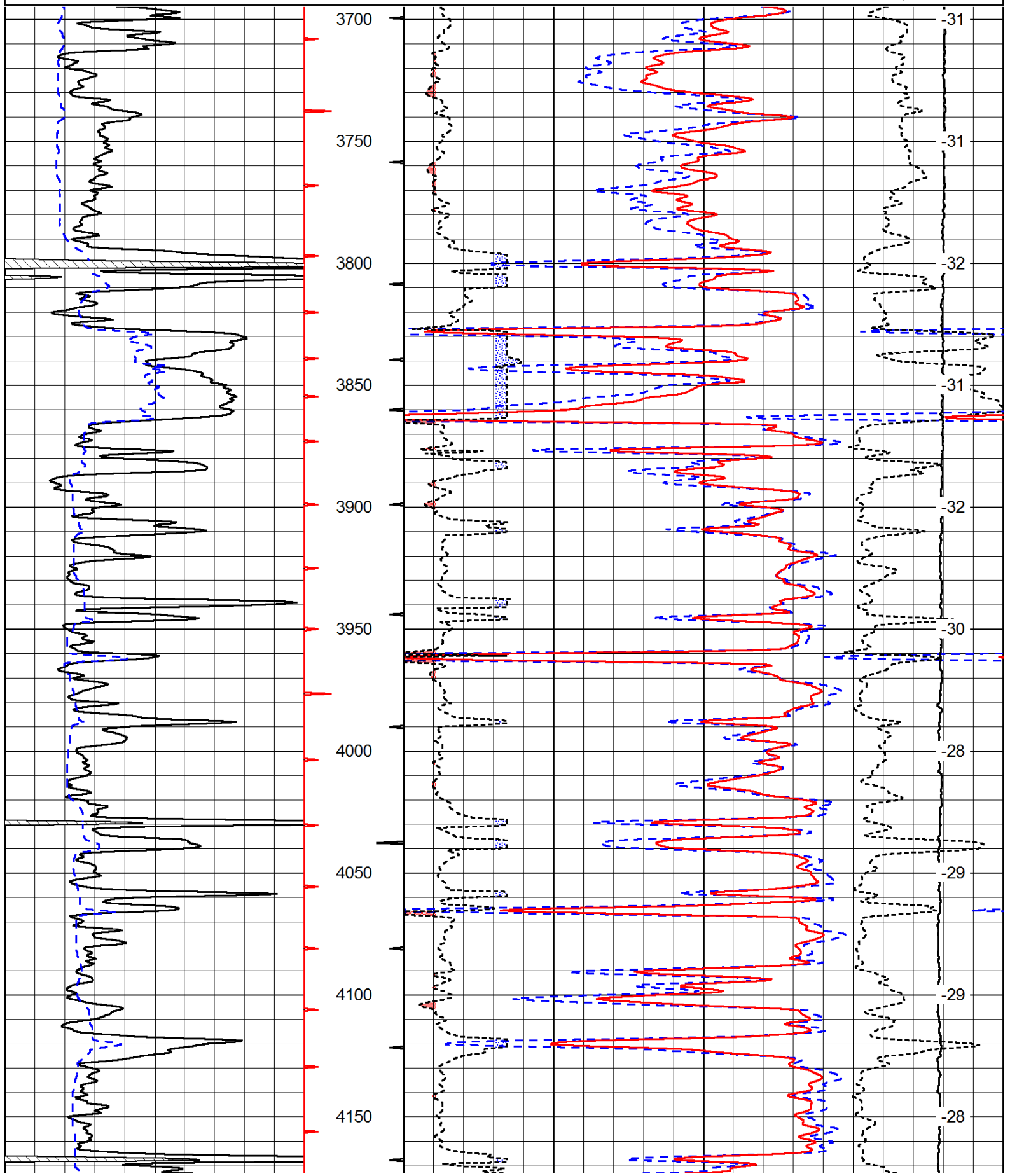
Thank you for using Log-Tech, Inc.
 (785) 625-3858

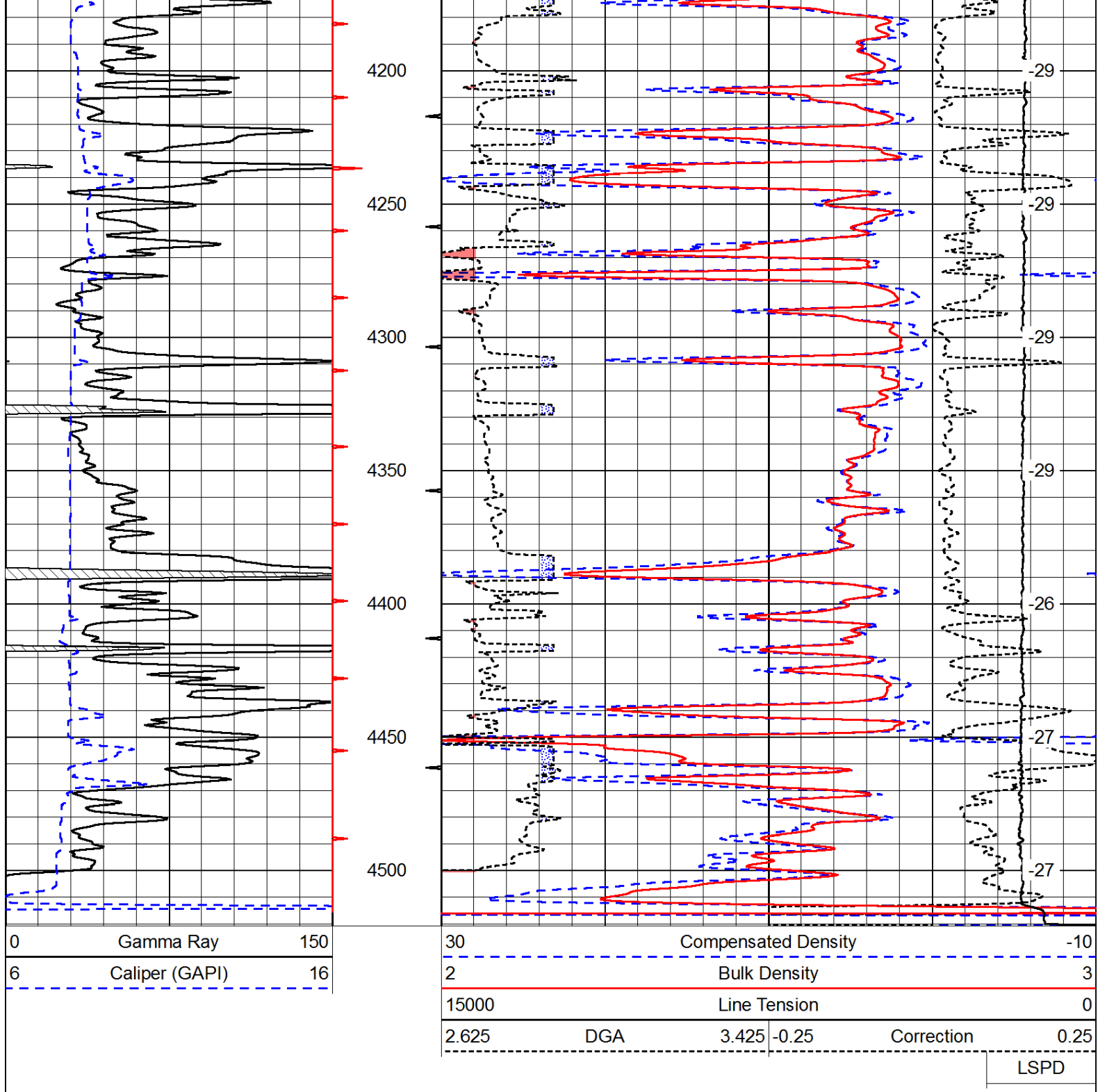
Hanston, 4 SW on 156 Highway to 225 Road, 2 1/2 South, West Into

Database File: c:\warrior\data\amwar_korf no. 5-7\amwarrior_korf_5-7hd.db
 Dataset Pathname: dil/awstck
 Presentation Format: cdl
 Dataset Creation: Mon Jul 09 15:12:54 2012
 Charted by: Depth in Feet scaled 1:600

0	Gamma Ray	150
6	Caliper (GAPI)	16

30	Compensated Density		-10
2	Bulk Density		3
15000	Line Tension		0
2.625	DGA	3.425	-0.25
Correction			0.25
LSPD			





Database File: c:\warrior\data\amwar_korf no. 5-7\amwarrior_korf_5-7hd.db
 Dataset Pathname: dil/awstck
 Presentation Format: cndlspec
 Dataset Creation: Mon Jul 09 15:12:54 2012
 Charted by: Depth in Feet scaled 1:240

