



DIGITAL LOG (785) 625-3858

Dual Induction Log

15-083-21,806-00-00

API No.

Company American Warrior, Inc.

Well Korf No. 5-7

Field Sebes West

County Hodgeman State Kansas

Location SE NW NW SE  
2,238' FSL & 2,000' FEL

Sec: 7 Twp: 23S Rge: 22W

Permanent Datum Ground Level Elevation 2253

Log Measured From Kelly Bushing 13 Ft. Above Perm. Datum

Drilling Measured From Kelly Bushing

Other Services  
CNL/CDL  
MEL  
Elevation  
K.B. 2266  
D.F.  
G.L. 2253

Date	7/9/2012
Run Number	One
Depth Driller	4516
Depth Logger	4513
Bottom Logged Interval	4512
Top Log Interval	1000
Casing Driller	8.625 @ 1020
Casing Logger	1016
Bit Size	7.875
Type Fluid in Hole	Chemical
Salinity, ppm CL	3400
Density / Viscosity	9.3 50
pH / Fluid Loss	10.5 11.6
Source of Sample	Flowline
Rm @ Meas. Temp	.72 @ 76
Rmf @ Meas. Temp	.54 @ 76
Rmc @ Meas. Temp	.97 @ 76
Source of Rmf / Rmc	Charts
Rm @ BHT	.45 @ 121
Operating Rig Time	4 Hours
Max Rec. Temp. F	121
Equipment Number	108
Location	Hays
Recorded By	J. Long
Witnessed By	Harley Sayles

<<< Fold Here >>>

All interpretations are opinions based on inferences from electrical or other measurements and we cannot and do not guarantee the accuracy or correctness of any interpretation, and we shall not, except in the case of gross or willful negligence on our part, be liable or responsible for any loss, costs, damages, or expenses incurred or sustained by anyone resulting from any interpretation made by any of our officers, agents or employees. These interpretations are also subject to our general terms and conditions set out in our current Price Schedule.

Comments

Thank you for using Log-Tech, Inc.  
(785) 625-3858

Hanston, 4 SW on 156 Highway to 225 Road, 2 1/2 South, West Into

Database File: c:\warrior\data\amwar\_korf no. 5-7\amwarrior\_korf\_5-7hd.db  
 Dataset Pathname: dil\awstck  
 Presentation Format: dil2in  
 Dataset Creation: Mon Jul 09 15:12:54 2012  
 Charted by: Depth in Feet scaled 1:600

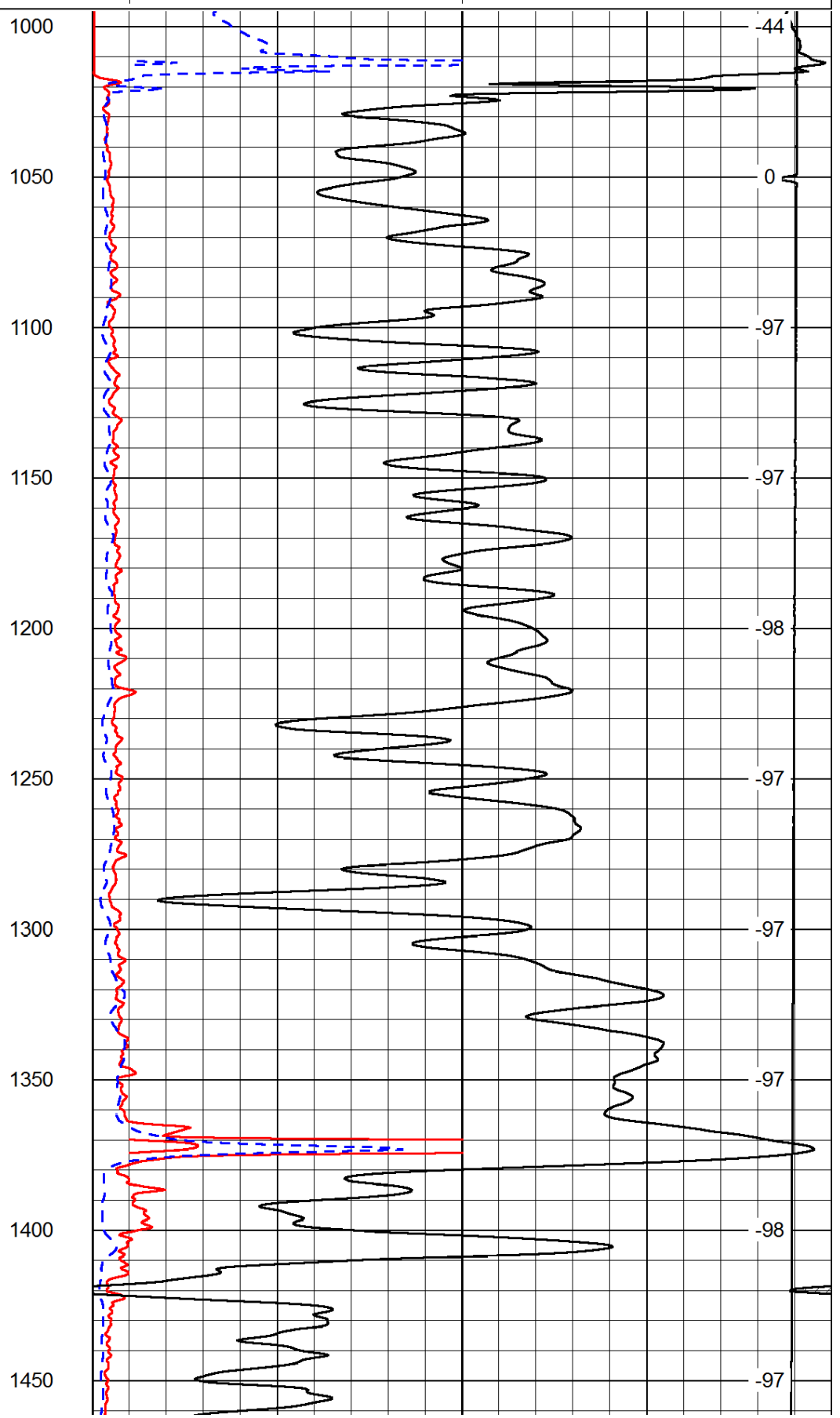
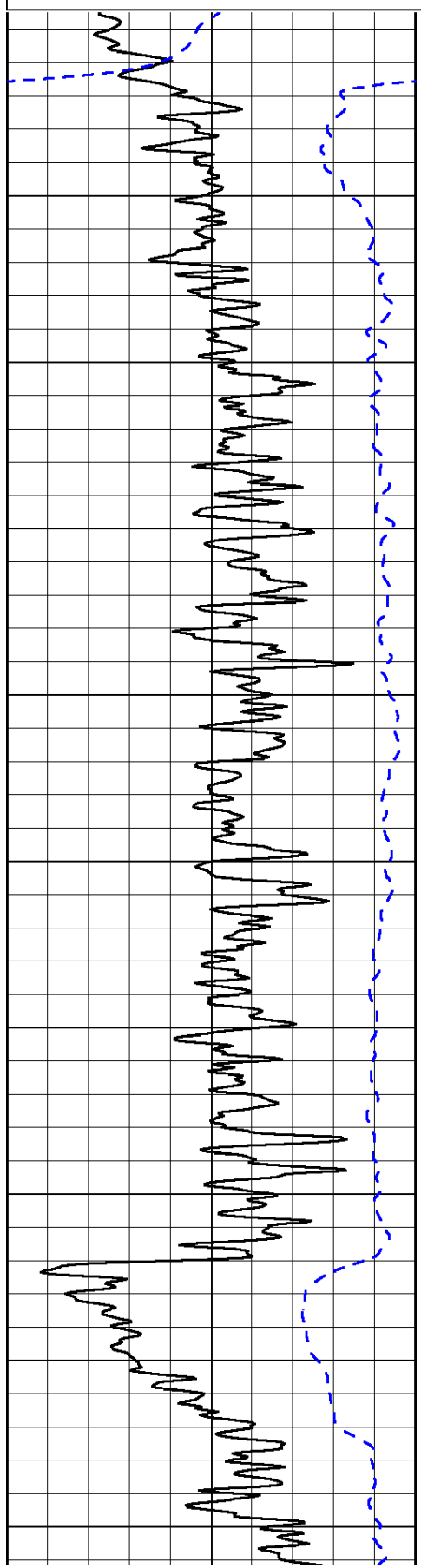
0	Gamma Ray	150
-200	SP (mV)	0

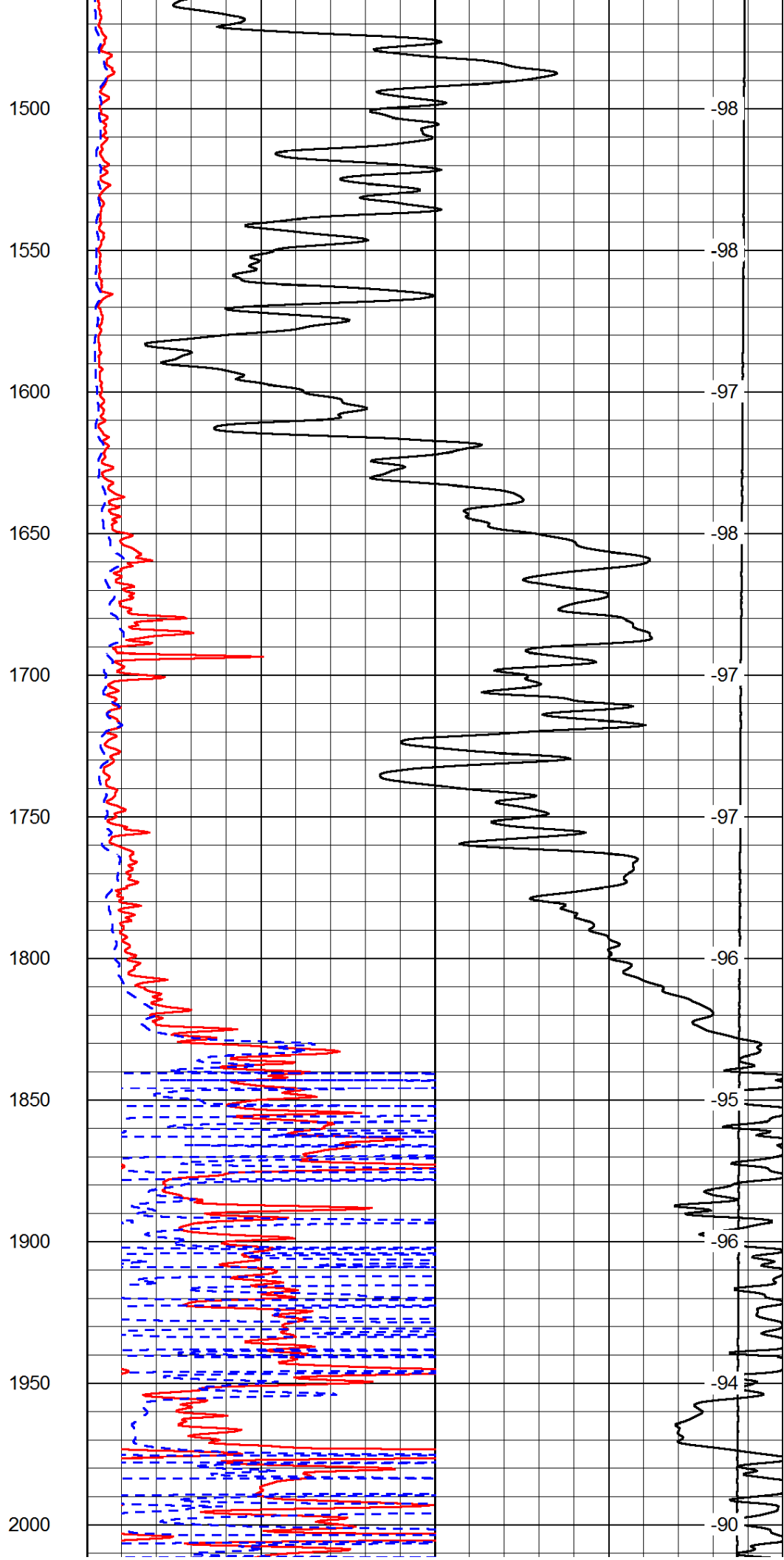
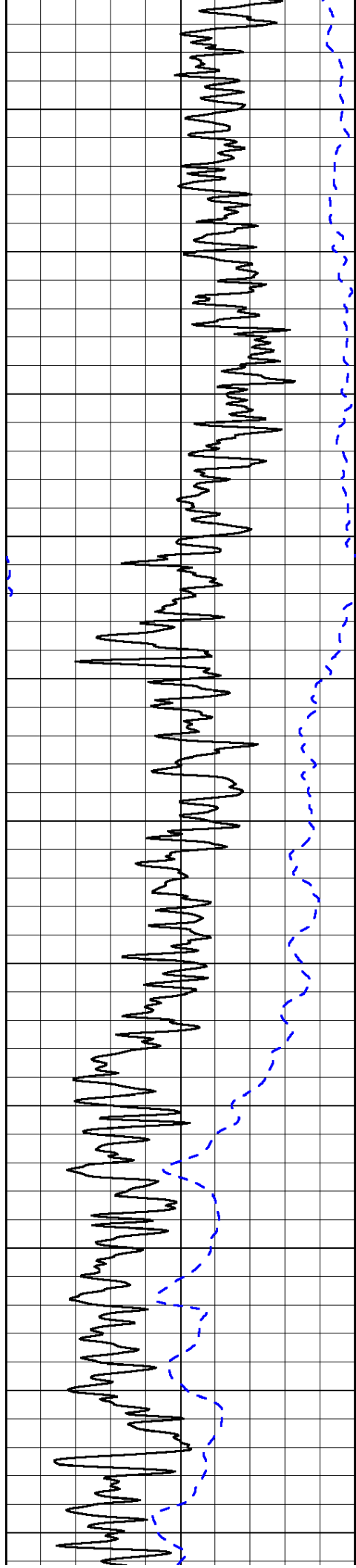
0	Shallow Resistivity	50
0	Deep Resistivity	50

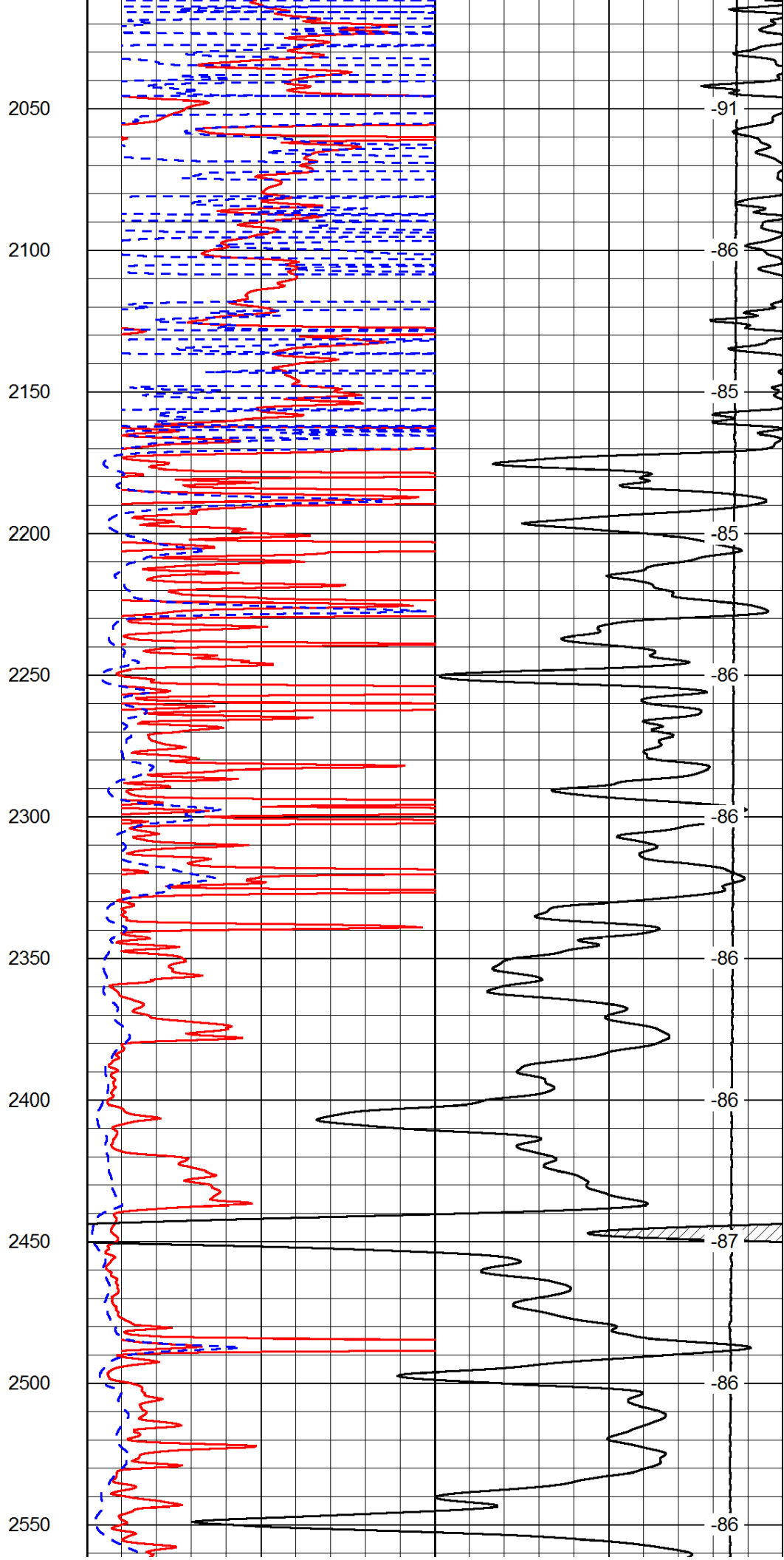
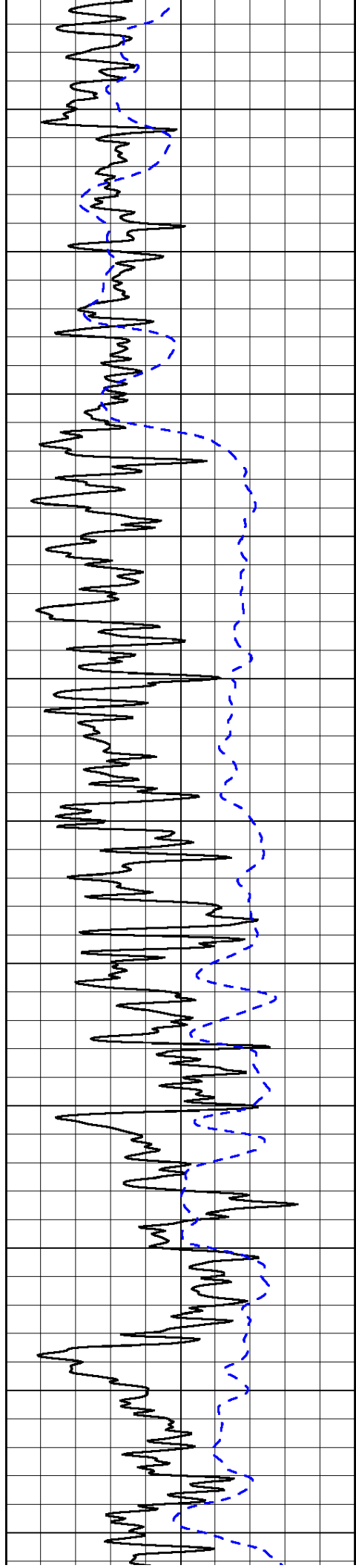
LSPD

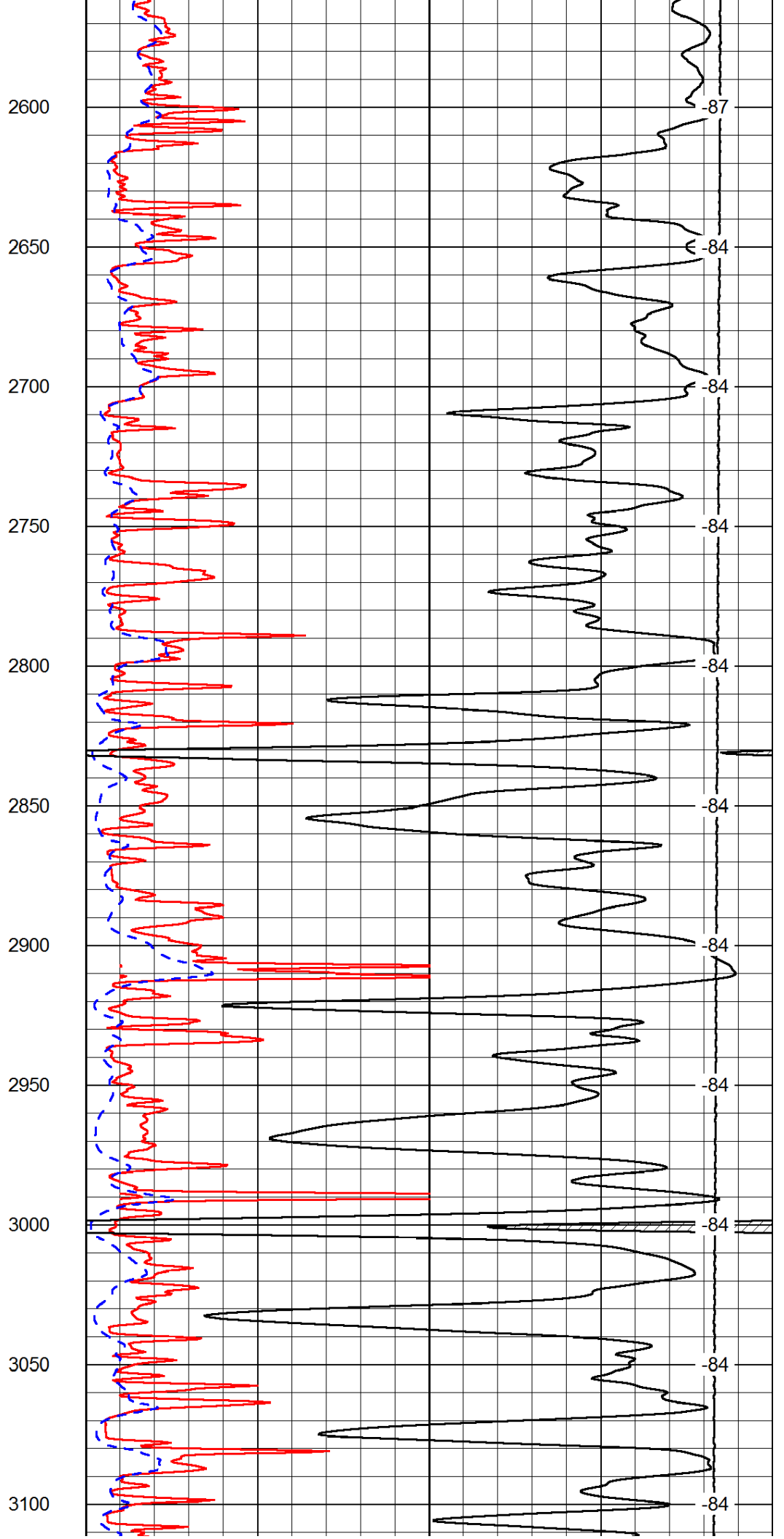
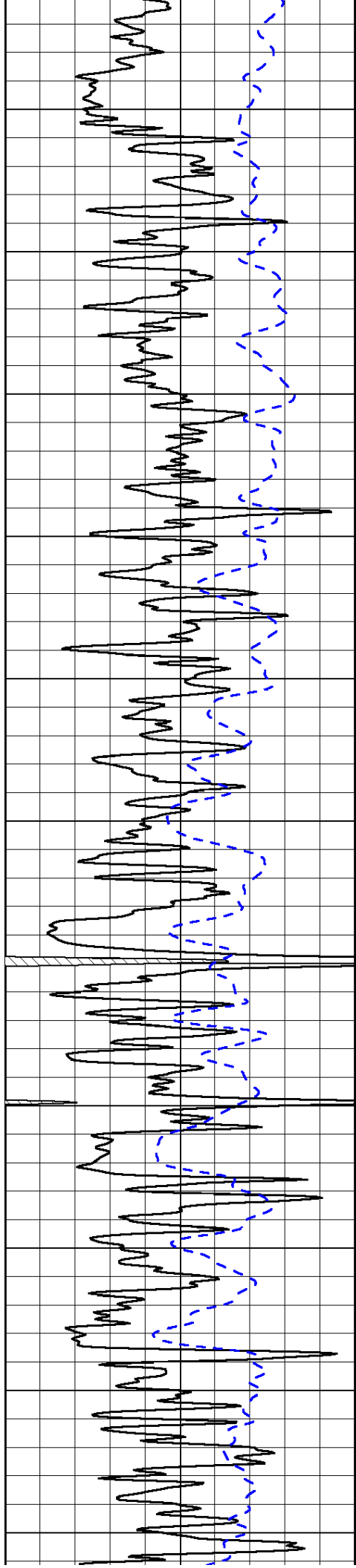
1000	Conductivity	0
15000	Line Tension	0

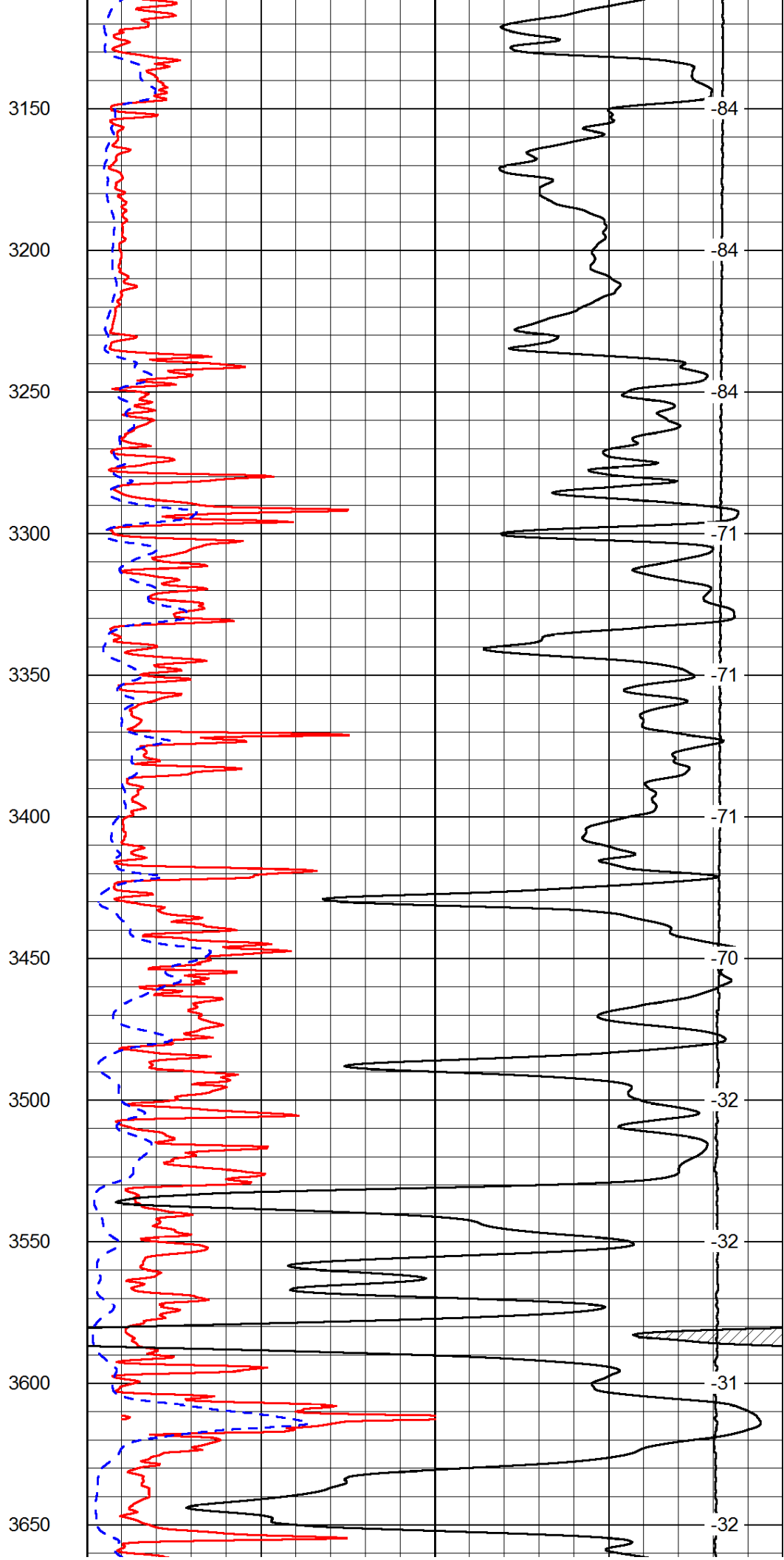
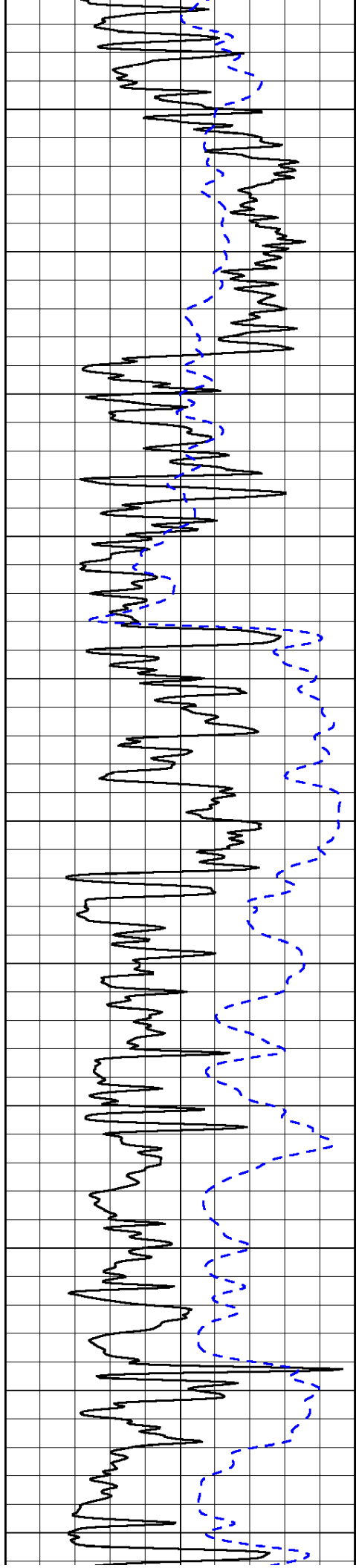
50	Shallow Resistivity	500
50	Deep Resistivity	500

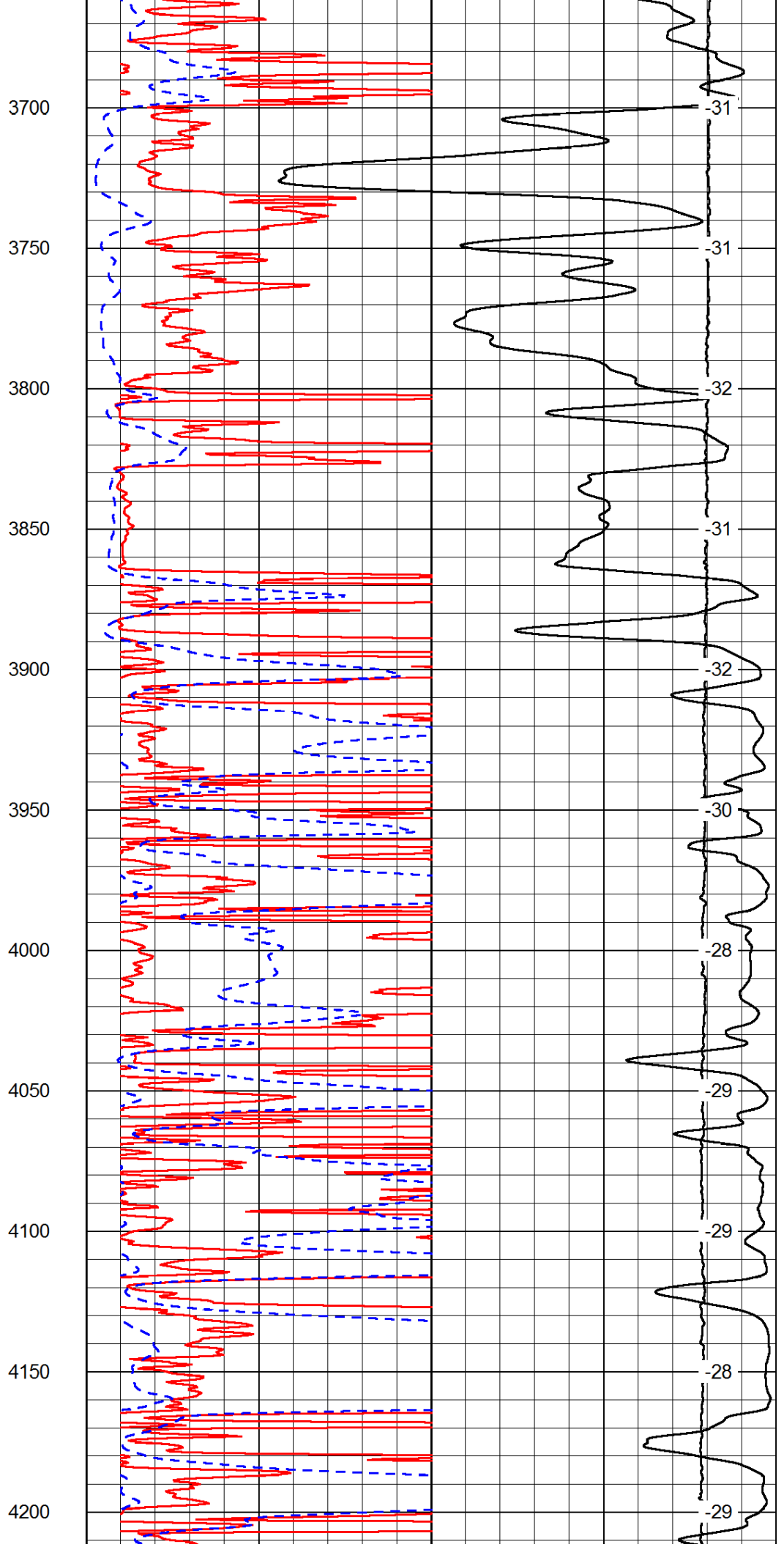
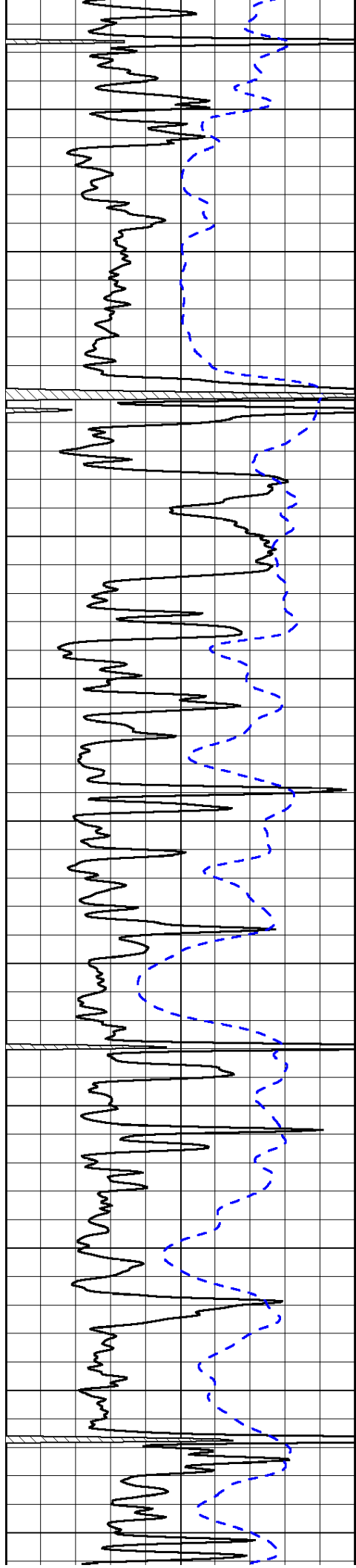


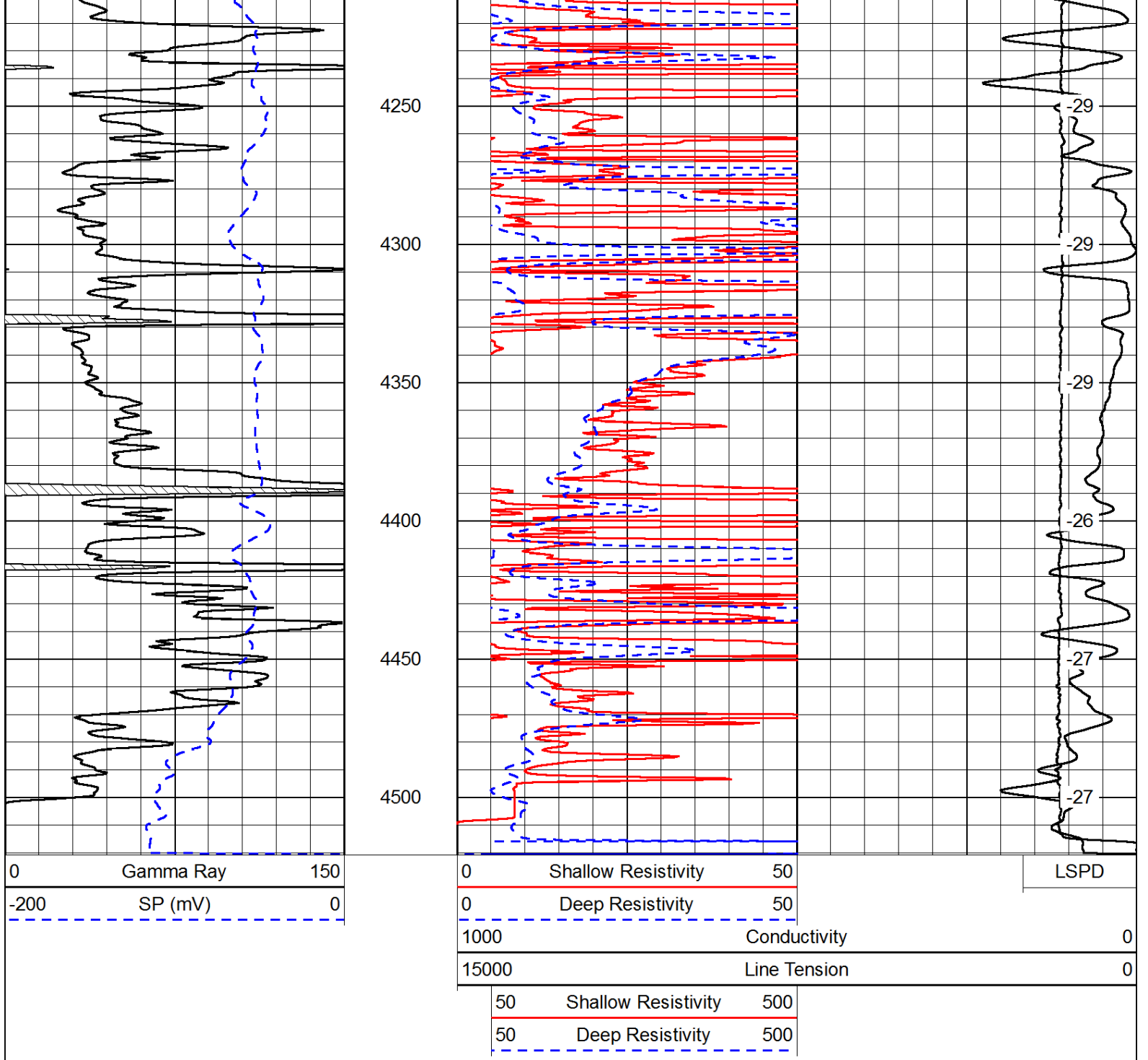




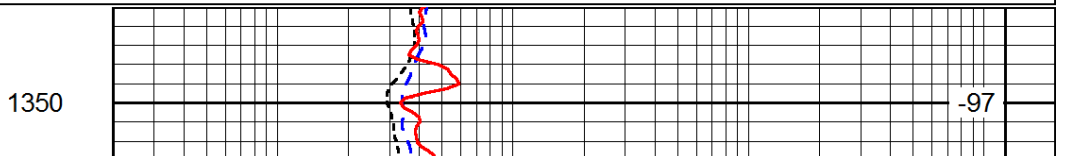
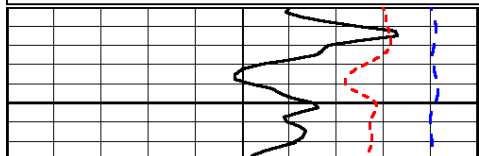
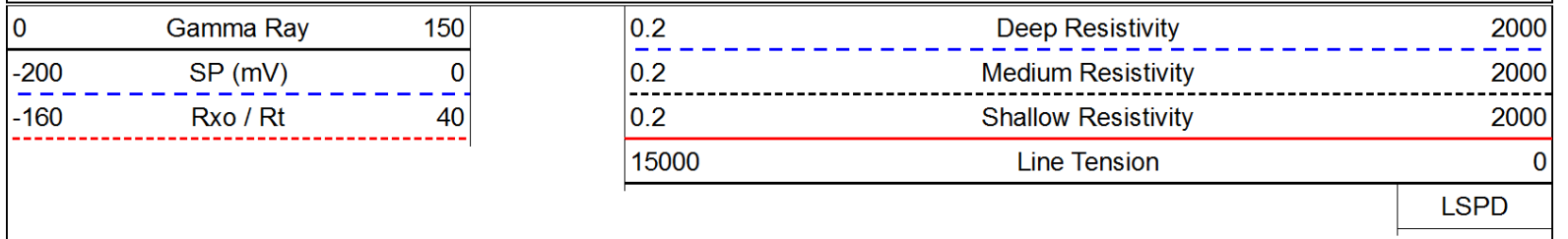


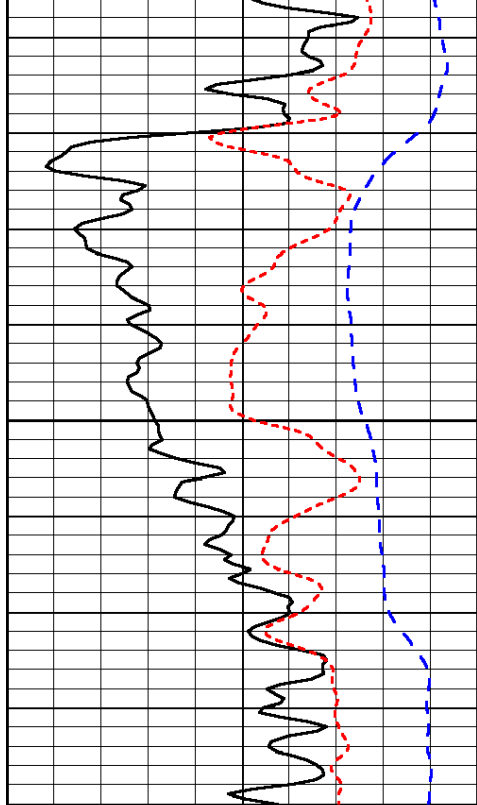






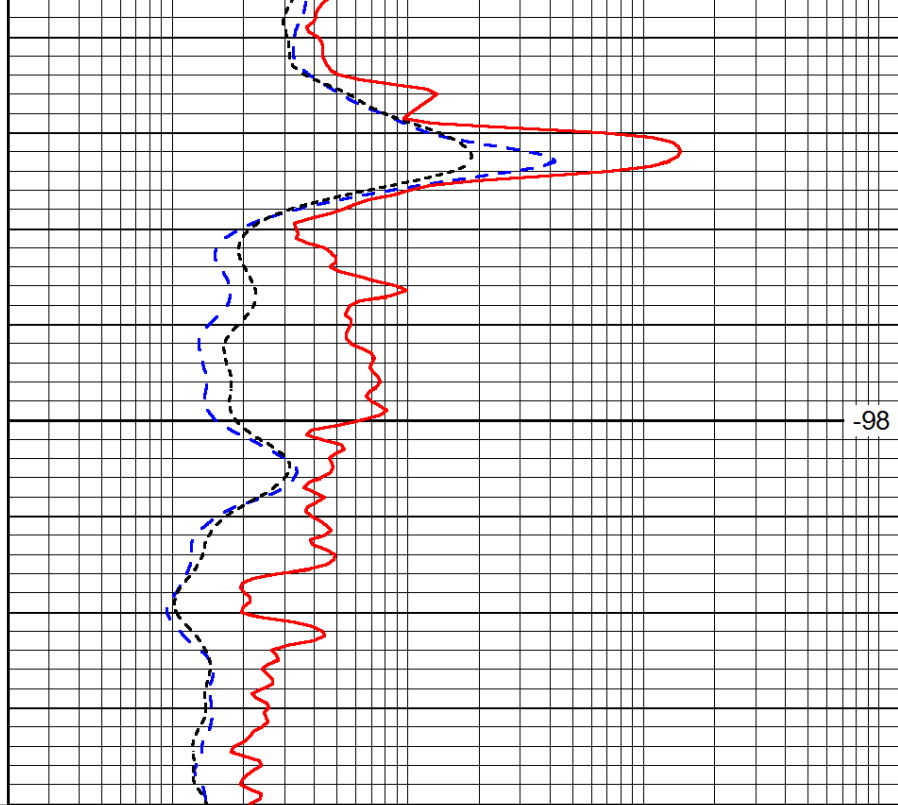
Database File: c:\warrior\data\amwar\_korf no. 5-7\amwarrior\_korf\_5-7hd.db  
 Dataset Pathname: dil/awstck  
 Presentation Format: dil  
 Dataset Creation: Mon Jul 09 15:12:54 2012  
 Charted by: Depth in Feet scaled 1:240





0	Gamma Ray	150
-200	SP (mV)	0
-160	Rxo / Rt	40

1400



0.2	Deep Resistivity	2000
0.2	Medium Resistivity	2000
0.2	Shallow Resistivity	2000
15000	Line Tension	0

-98

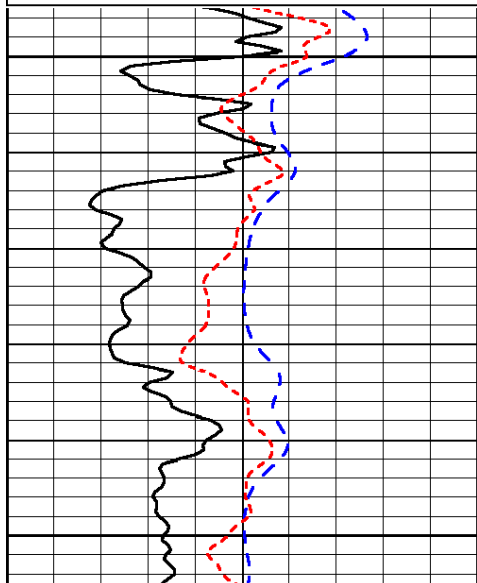
LSPD

Database File: c:\warrior\data\amwar\_korf no. 5-7\amwarrior\_korf\_5-7hd.db  
 Dataset Pathname: dil/awstck  
 Presentation Format: dil  
 Dataset Creation: Mon Jul 09 15:12:54 2012  
 Charted by: Depth in Feet scaled 1:240

0	Gamma Ray	150
-200	SP (mV)	0
-160	Rxo / Rt	40

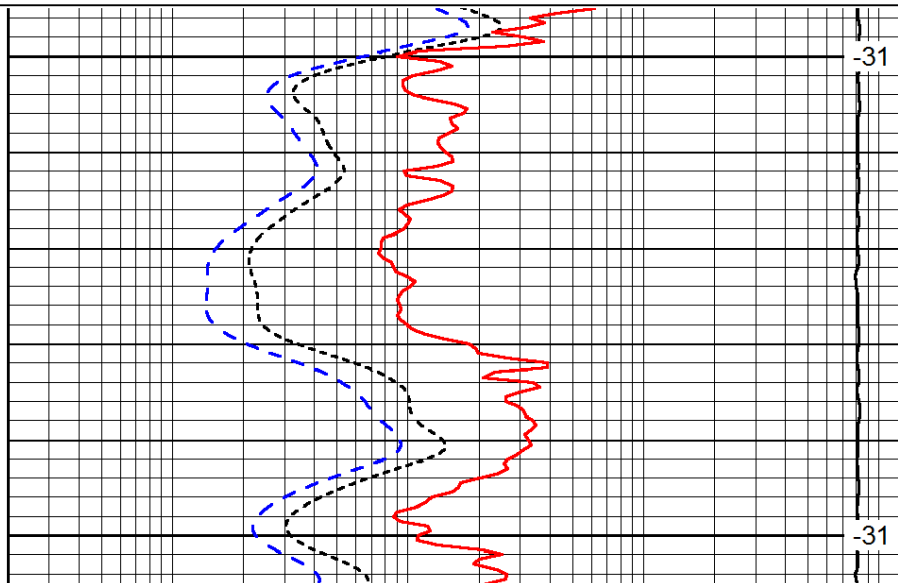
0.2	Deep Resistivity	2000
0.2	Medium Resistivity	2000
0.2	Shallow Resistivity	2000
15000	Line Tension	0

LSPD



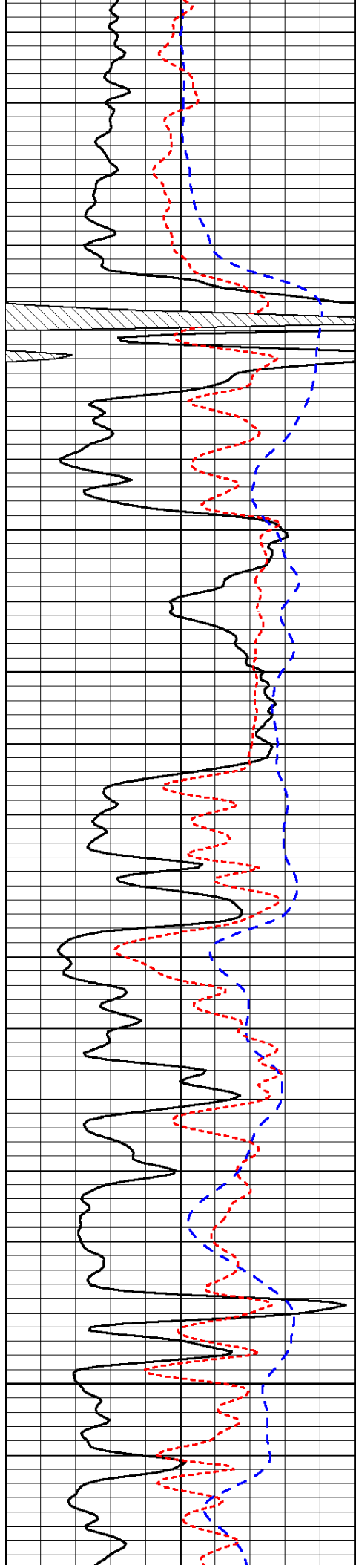
3700

3750



-31

-31

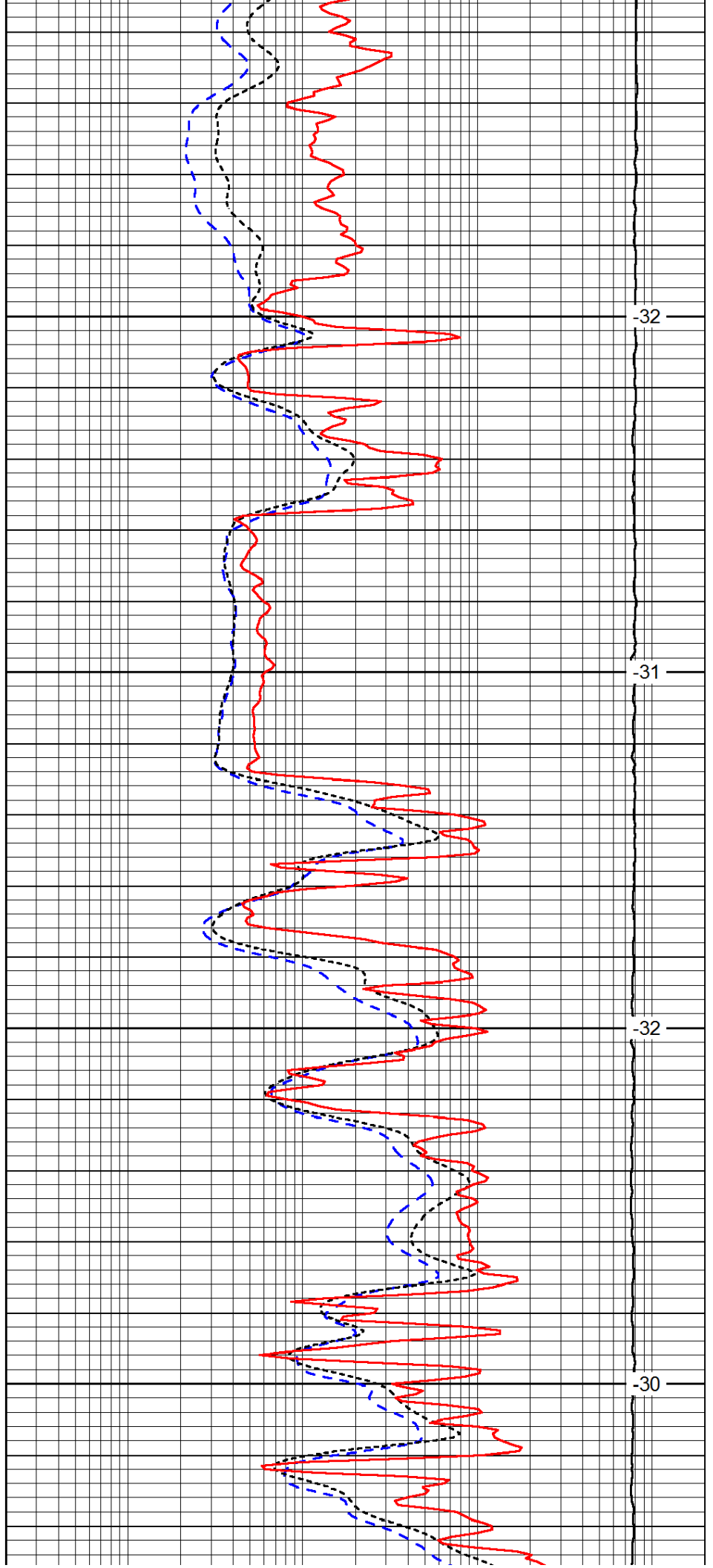


3800

3850

3900

3950

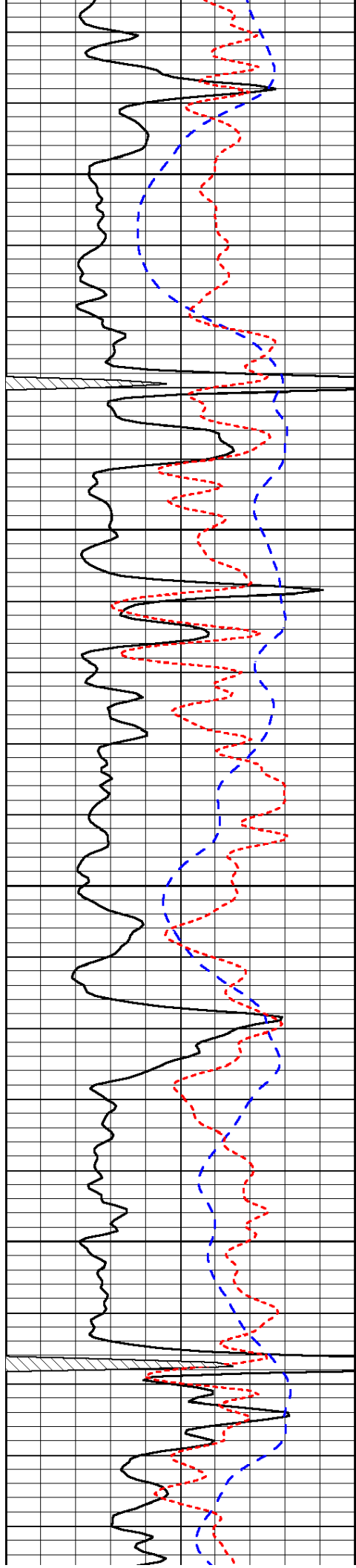


-32

-31

-32

-30

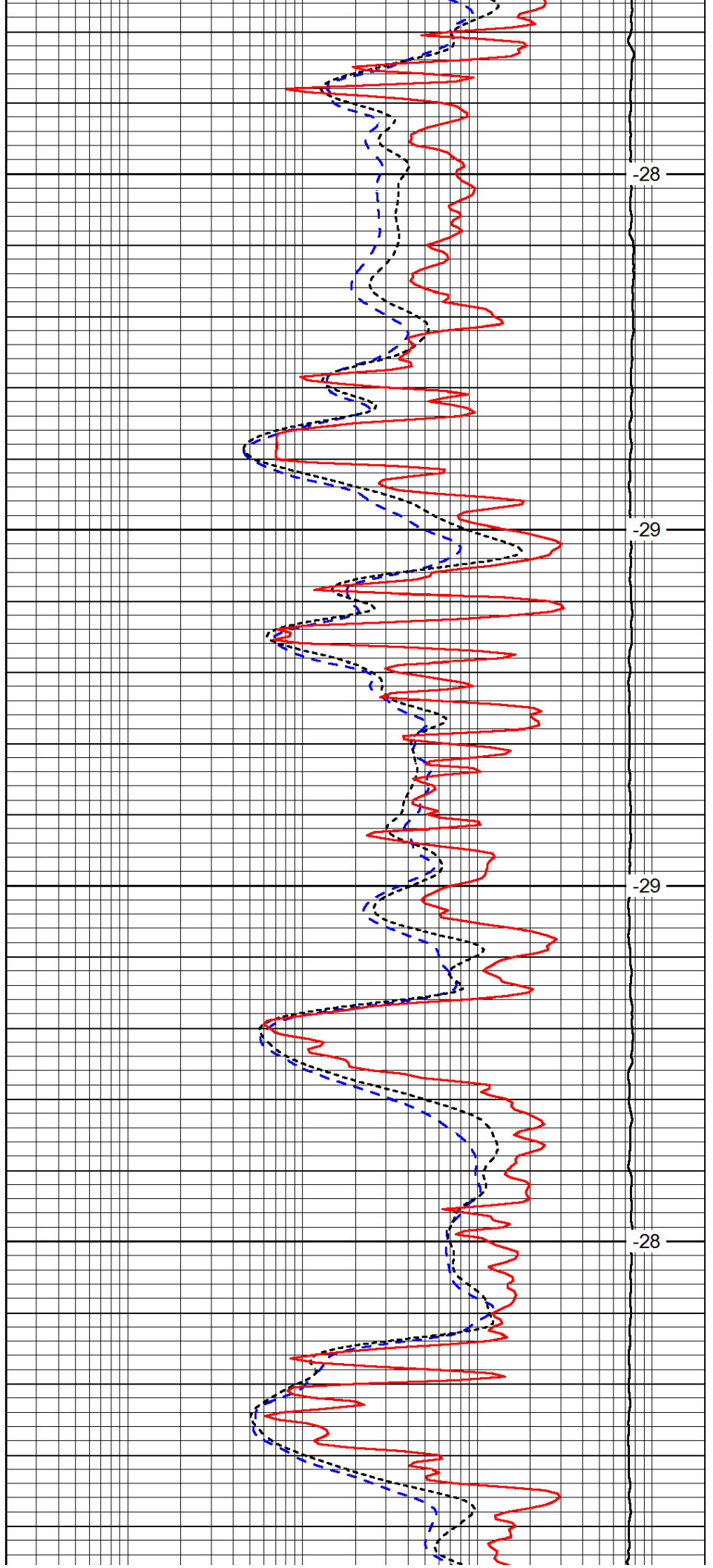


4000

4050

4100

4150

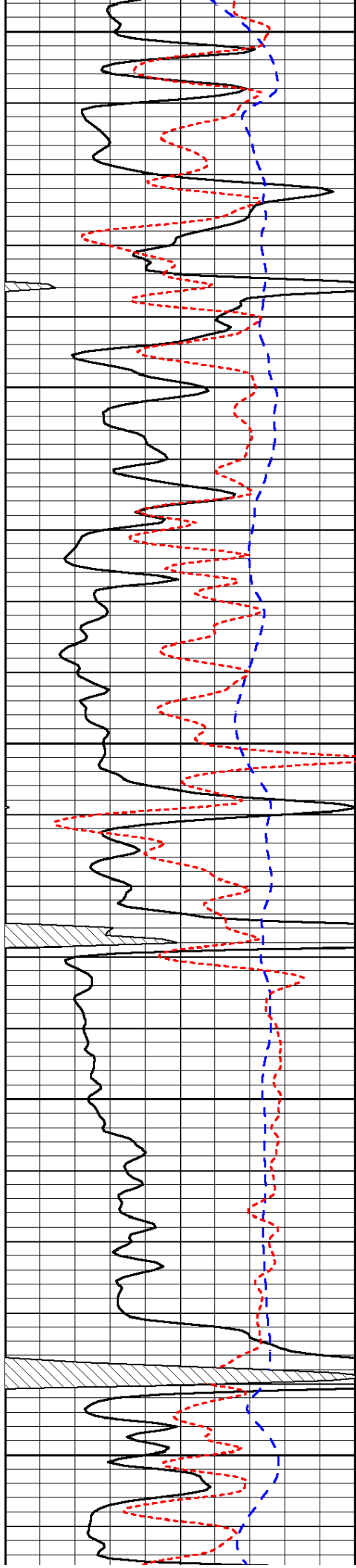


-28

-29

-29

-28



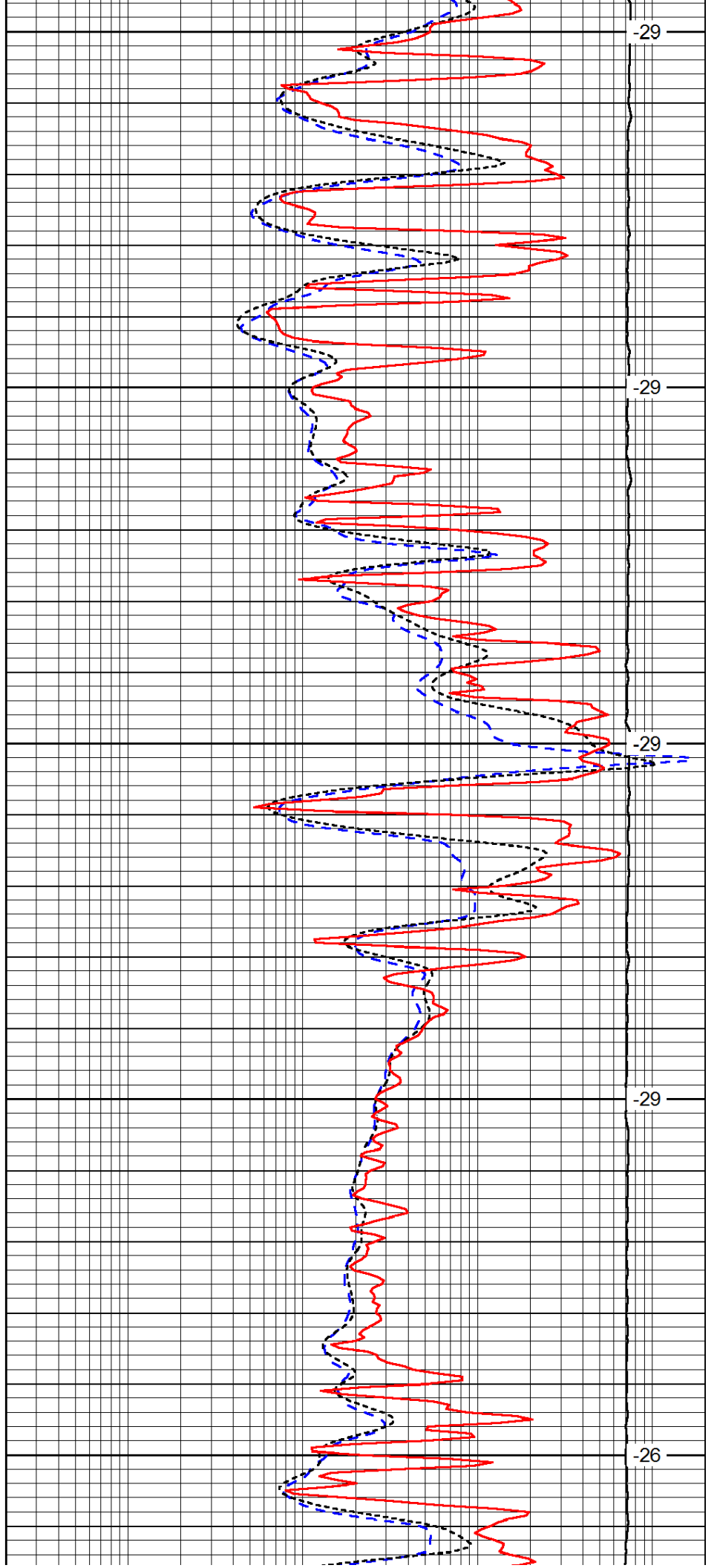
4200

4250

4300

4350

4400



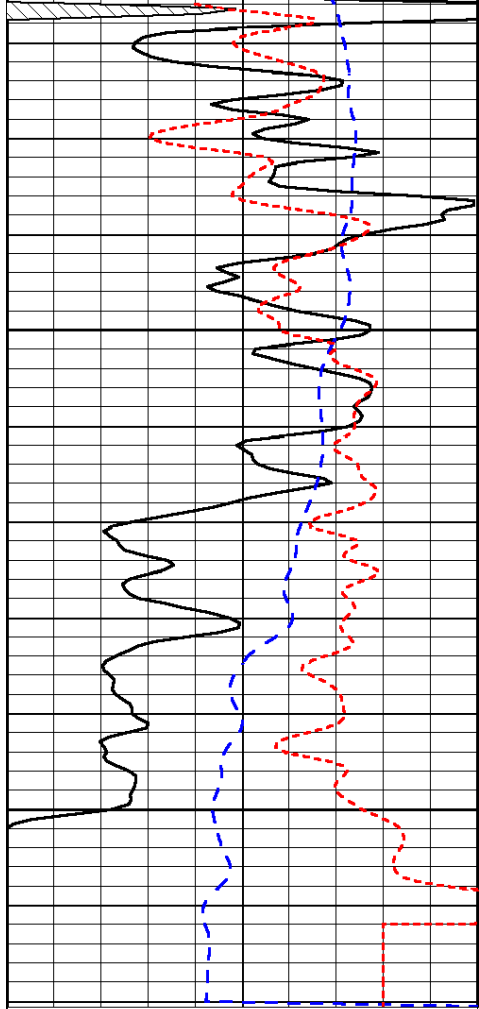
-29

-29

-29

-29

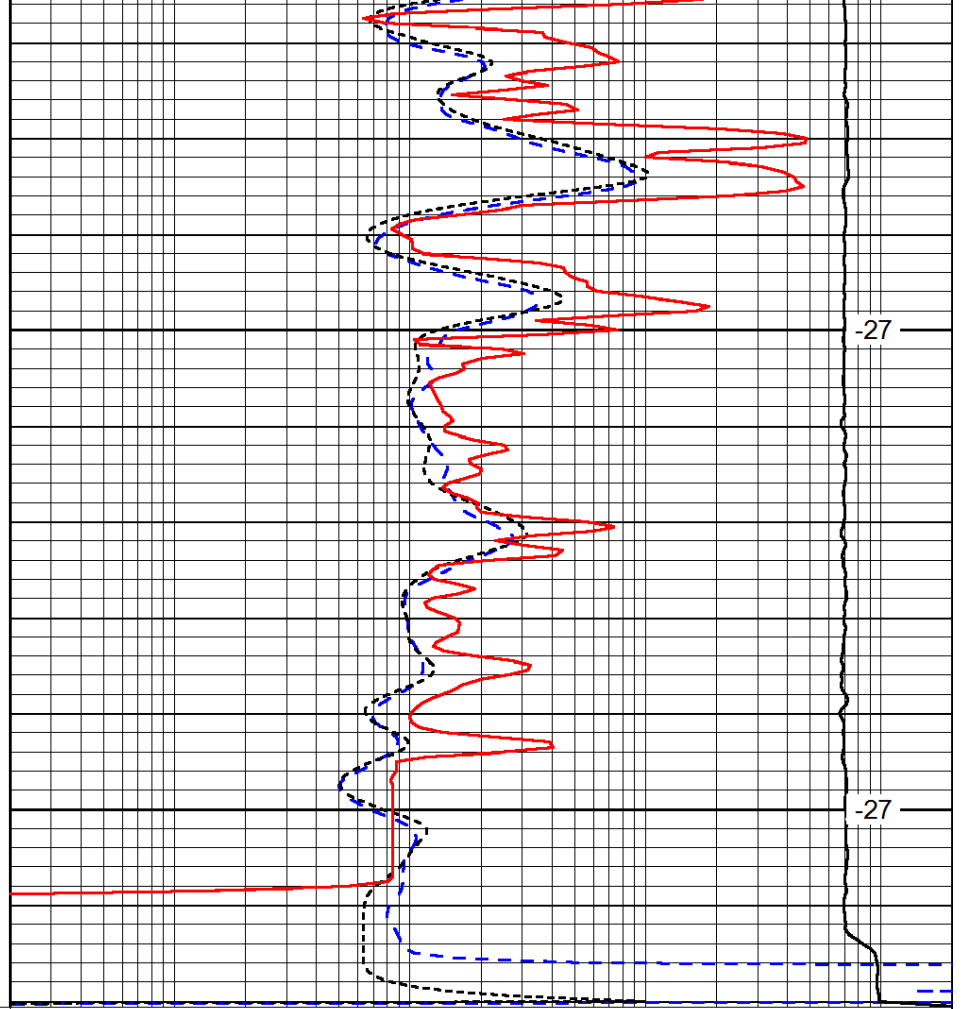
-26



0	Gamma Ray	150
-200	SP (mV)	0
-160	Rxo / Rt	40

4450

4500



0.2	Deep Resistivity	2000
0.2	Medium Resistivity	2000
0.2	Shallow Resistivity	2000
15000	Line Tension	0

-27

-27

LSPD