



DIGITAL LOG (785) 625-3858

Microresistivity Log

15-083-21,806-00-00

API No.

Company American Warrior, Inc.

Well Korf No. 5-7

Field Sebes West

County Hodgeman State

Kansas

Location

SE NW NW SE
2,238' FSL & 2,000' FEL

Other Services
CNL/CDL
DIL

Sec: 7

Twp: 23S Rge: 22W

Elevation

Permanent Datum Ground Level

Kelly Bushing 13 Ft. Above Perm. Datum

Elevation
K.B. 2266
D.F. 2253
G.L. 2253

Drilling Measured From Kelly Bushing

Date 7/9/2012

Run Number Two

Depth Driller 4516

Depth Logger 4513

Bottom Logged Interval 4512

Top Log Interval 3700

Casing Driller 8.625 @ 1020

Casing Logger 1016

Bit Size 7.875

Type Fluid in Hole Chemical

Salinity, ppm CL 3400

Density / Viscosity 9.3 50

pH / Fluid Loss 10.5 11.6

Source of Sample Flowline

Rm @ Meas. Temp .72 @ 76

Rmf @ Meas. Temp .54 @ 76

Rmc @ Meas. Temp .97 @ 76

Source of Rmf / Rmc Charts

Rm @ BHT .45 @ 121

Operating Rig Time 4 Hours

Max Rec. Temp. F 121

Equipment Number 108

Location Hays

Recorded By J. Long

Witnessed By Harley Sayles

<<< Fold Here >>>

All interpretations are opinions based on inferences from electrical or other measurements and we cannot and do not guarantee the accuracy or correctness of any interpretation, and we shall not, except in the case of gross or willful negligence on our part, be liable or responsible for any loss, costs, damages, or expenses incurred or sustained by anyone resulting from any interpretation made by any of our officers, agents or employees. These interpretations are also subject to our general terms and conditions set out in our current Price Schedule.

Comments

Thank you for using Log-Tech, Inc.
(785) 625-3858

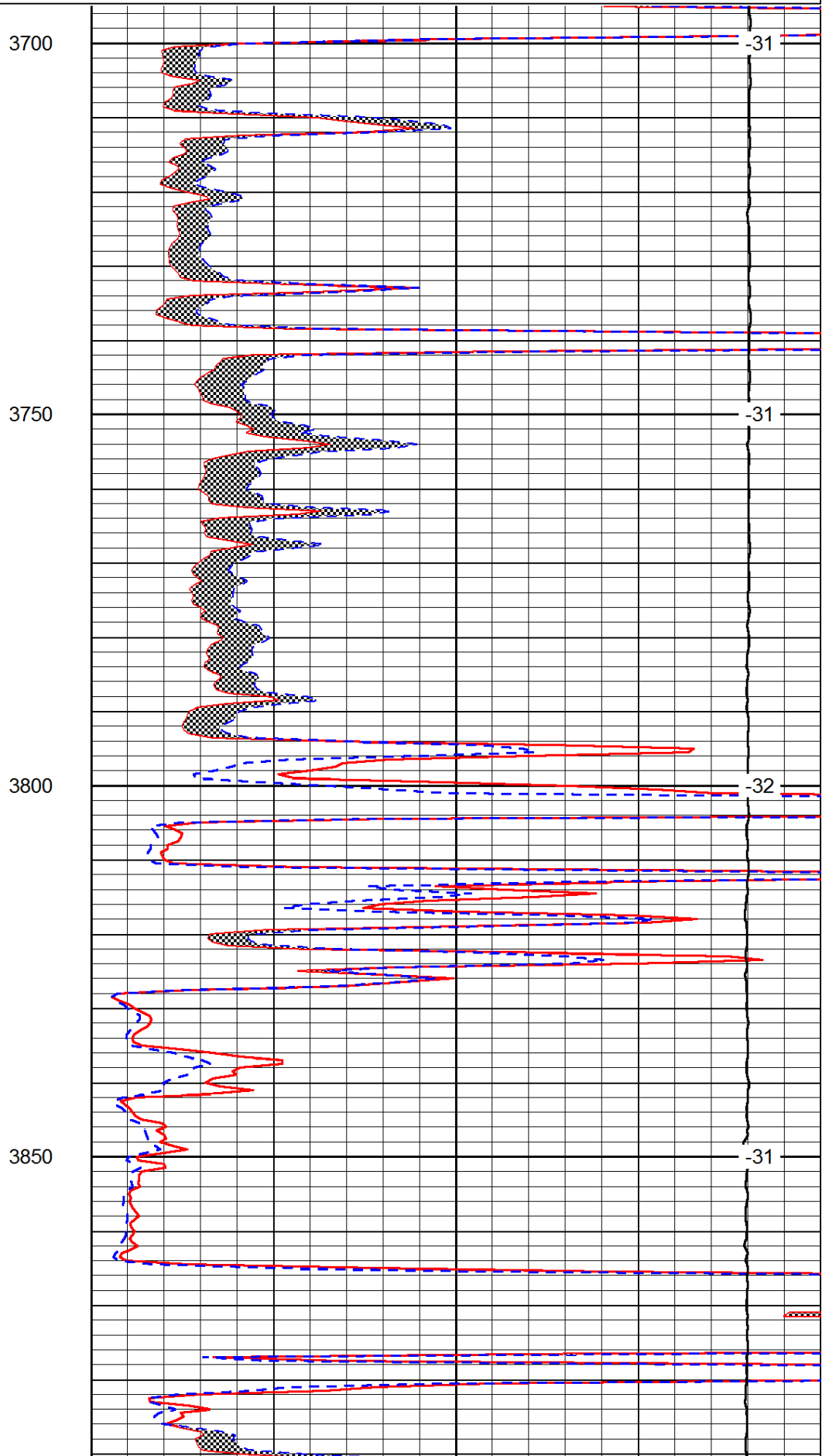
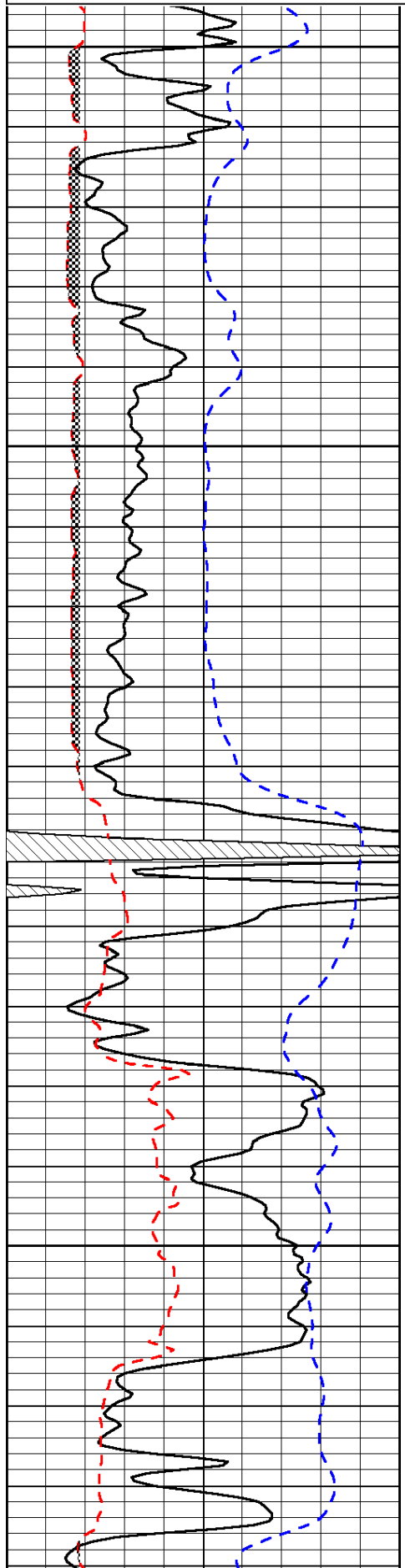
Hanston, 4 SW on 156 Highway to 225 Road, 2 1/2 South, West Into

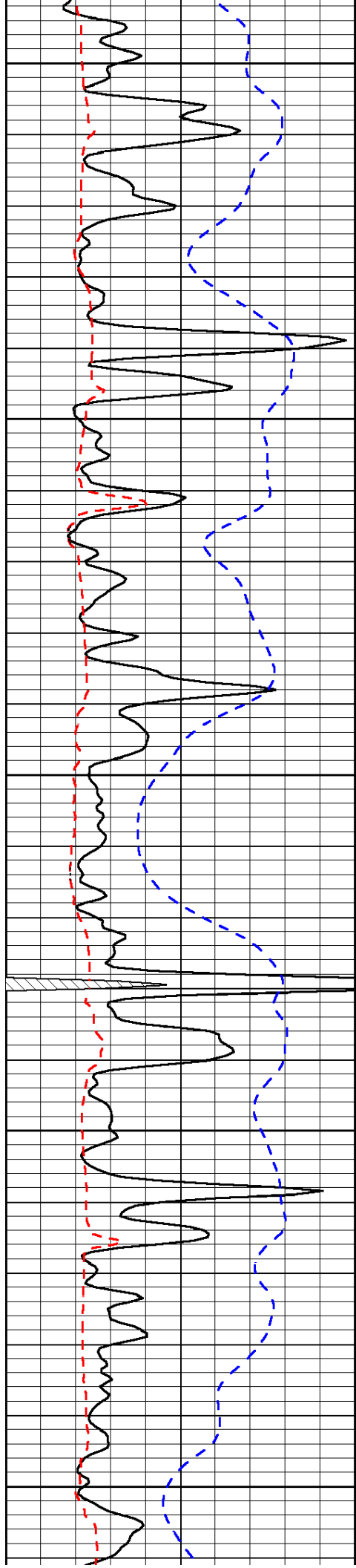
Database File: c:\warrior\data\amwar_korf no. 5-7\amwarrior_korf_5-7hd.db
Dataset Pathname: dil/awstck
Presentation Format: micro
Dataset Creation: Mon Jul 09 15:12:54 2012
Charted by: Depth in Feet scaled 1:240

0	Gamma Ray	150
6	Micro Log Caliper (GAPI)	16
-200	SP (mV)	0

0	Micro Inverse 1 X 1	40
0	Micro Normal 2"	40
15000	Line Weight	0

LSPD





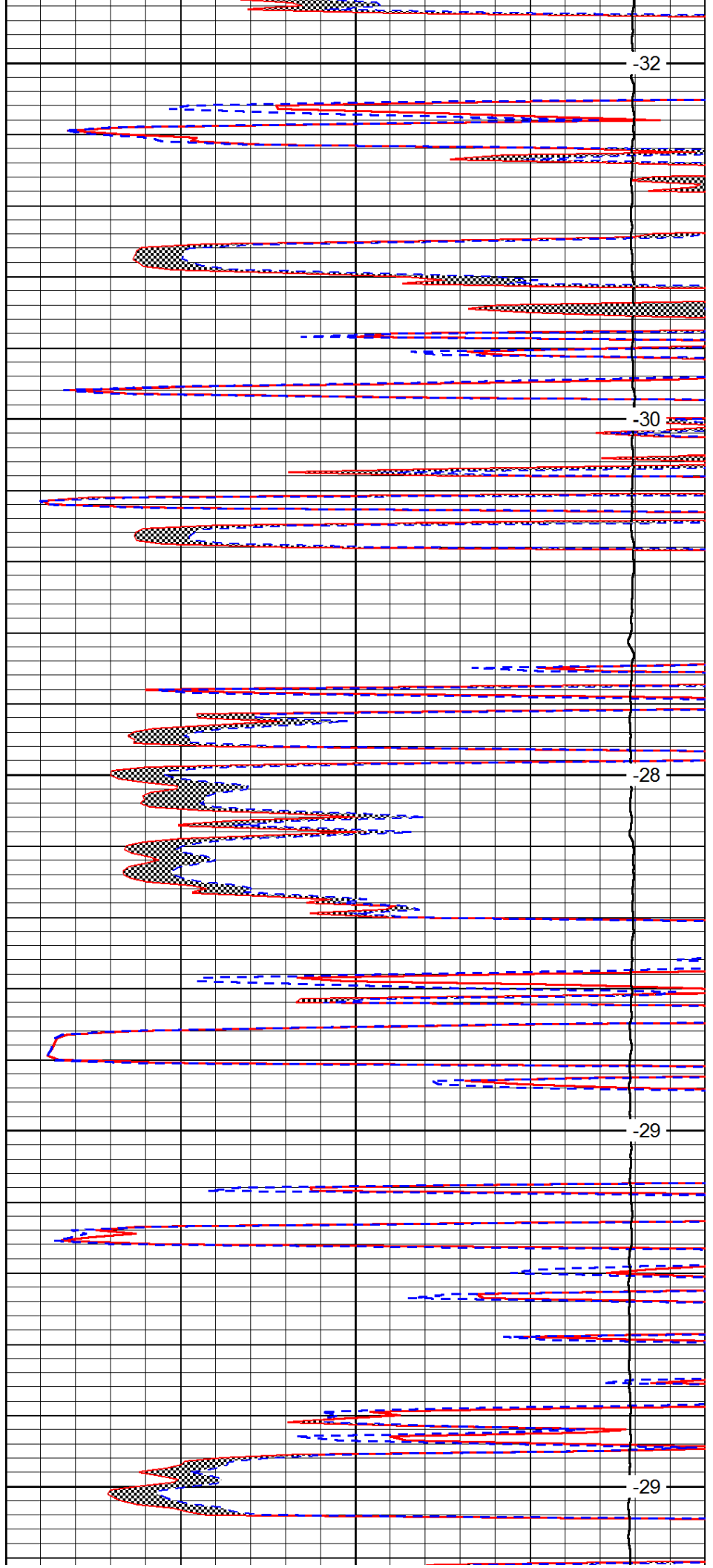
3900

3950

4000

4050

4100



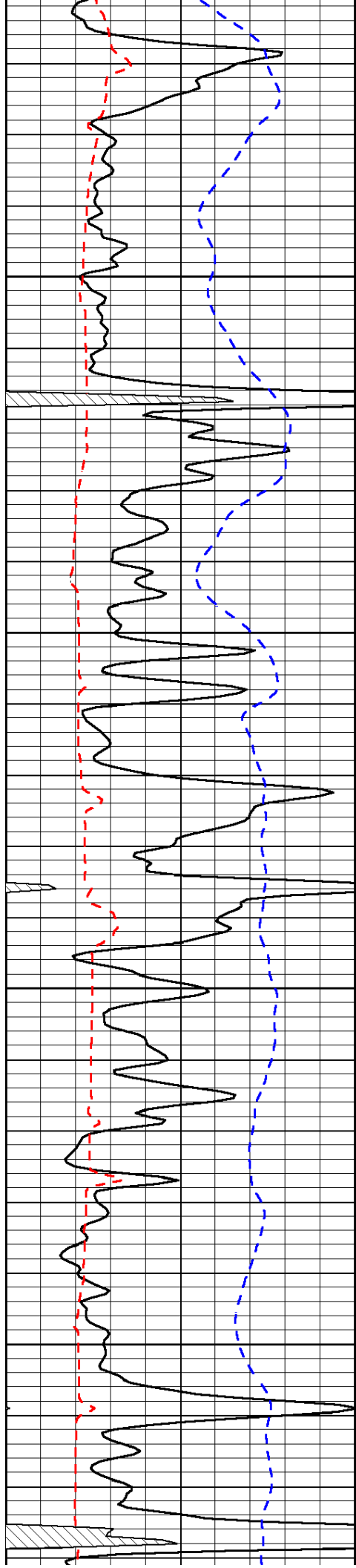
-32

-30

-28

-29

-29

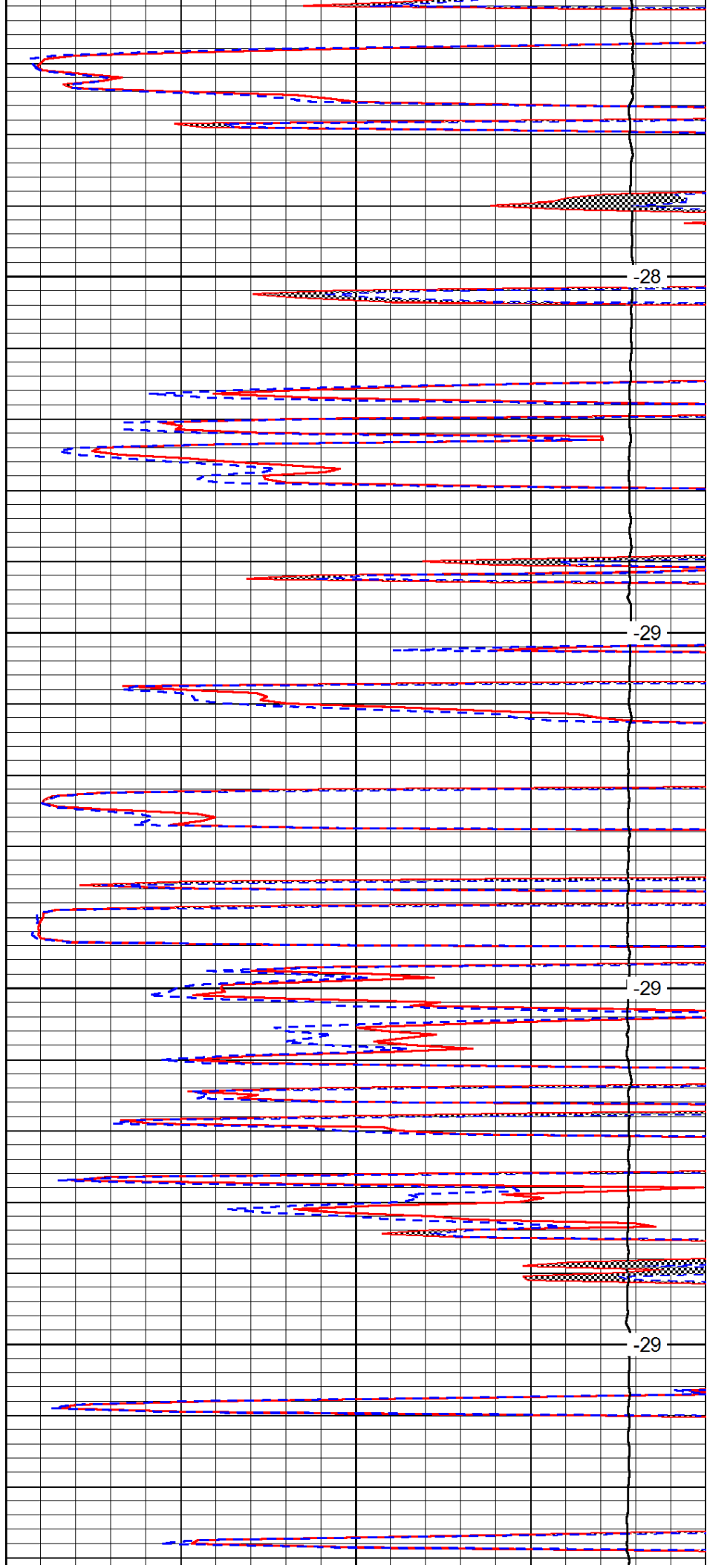


4150

4200

4250

4300

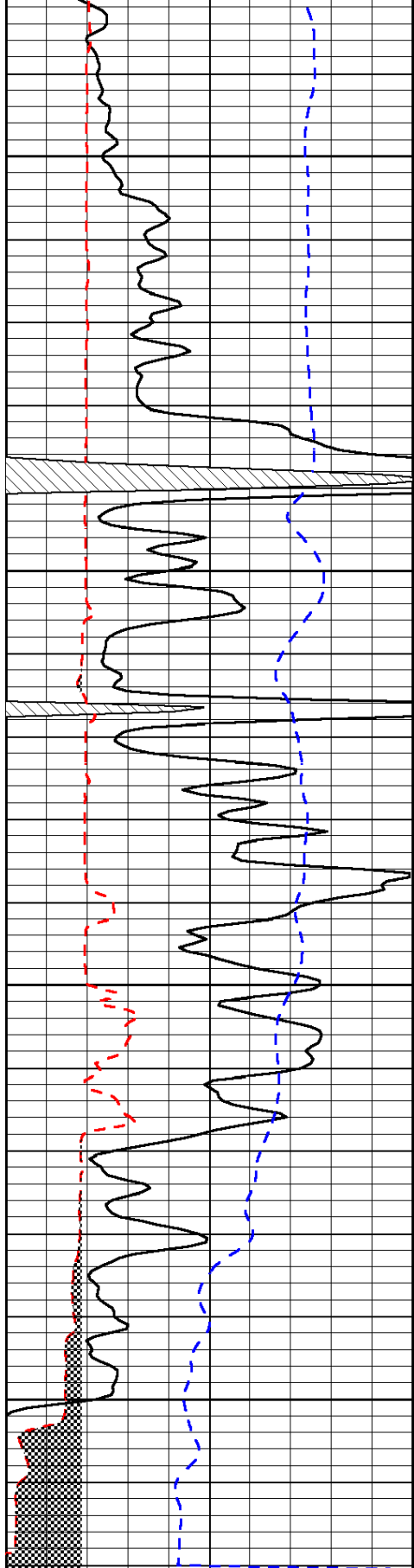


-28

-29

-29

-29



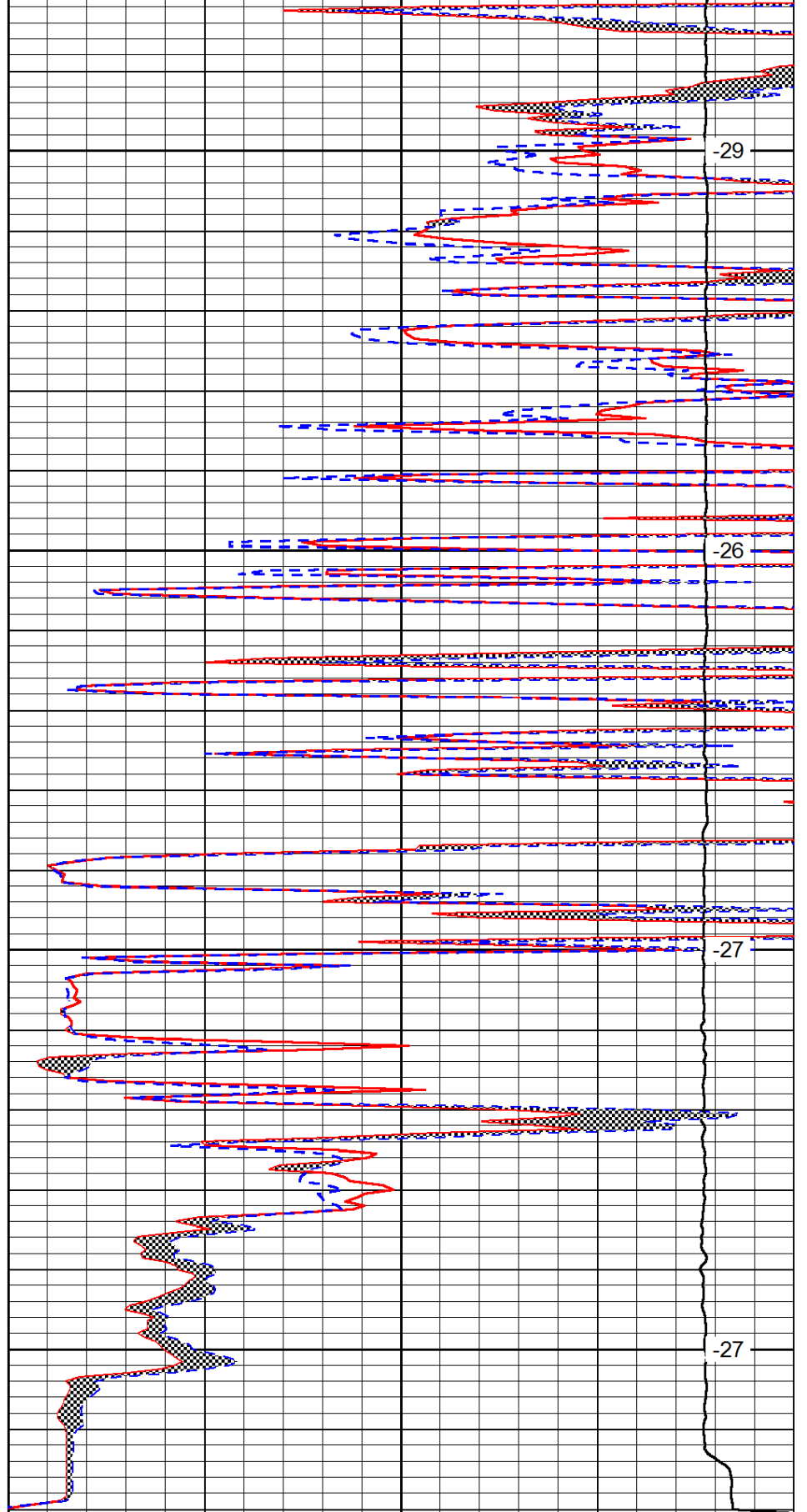
0	Gamma Ray	150
6	Micro Log Caliper (GAPI)	16
-200	SP (mV)	0

4350

4400

4450

4500



0	Micro Inverse 1 X 1	40
0	Micro Normal 2''	40
15000	Line Weight	0

-29

-26

-27

-27

LSPD