



DIGITAL LOG (785) 625-3858

Dual Induction Log

15-145-21661-00-00

API No.

Company Reif Oil & Gas Company

Well Deckert #2

Field Unnamed

County Pawnee State Kansas

Location 1130' FSL & 1195' FEL

Other Services  
CNL/CDL  
MEL

Sec: 36 Twp: 20S Rge: 16W

Permanent Datum Ground Level Elevation 1989

Log Measured From Kelly Bushing 7 Ft. Above Perm. Datum

Elevation  
K.B. 1996  
D.F. 1989  
G.L. 1989

Drilling Measured From Kelly Bushing

Date 7/5/2012

Run Number One

Depth Driller 3870

Depth Logger 3866

Bottom Logged Interval 3865

Top Log Interval 1000

Casing Driller 8.625 @ 1006

Casing Logger 1004

Bit Size 7.875

Type Fluid in Hole Chemical

Salinity, ppm CL 9700

Density / Viscosity 8.9 41

pH / Fluid Loss 10.5 13.4

Source of Sample Flowline

Rm @ Meas. Temp 0.60 @ 90

Rmf @ Meas. Temp 0.45 @ 90

Rmc @ Meas. Temp 0.81 @ 90

Source of Rmf / Rmc Charts

Rm @ BHT 0.46 @ 117

Operating Rig Time 4 Hours

Max Rec. Temp. F 117

Equipment Number 91

Location Hays

Recorded By D. Schmidt

Witnessed By Jim Musgrove

<<< Fold Here >>>

All interpretations are opinions based on inferences from electrical or other measurements and we cannot and do not guarantee the accuracy or correctness of any interpretation, and we shall not, except in the case of gross or willful negligence on our part, be liable or responsible for any loss, costs, damages, or expenses incurred or sustained by anyone resulting from any interpretation made by any of our officers, agents or employees. These interpretations are also subject to our general terms and conditions set out in our current Price Schedule.

Comments

Thank you for using Log-Tech, Inc.  
(785) 625-3858  
  
Pawnee Rock (SW 70th & Hwy 156),  
2 1/2 W to SW 140th Ave., 1/4 N, W into

Database File: c:\warrior\data\reif\_deckert #2\reif\_070512hd.db  
Dataset Pathname: dil/reifstack  
Presentation Format: dil2in  
Dataset Creation: Thu Jul 05 17:31:01 2012  
Charted by: Depth in Feet scaled 1:600

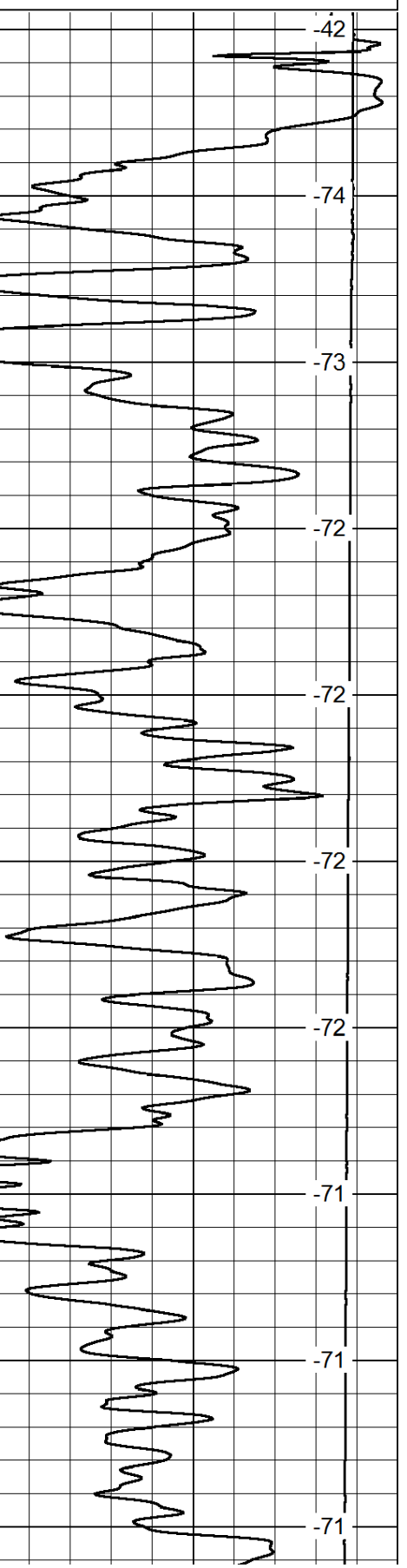
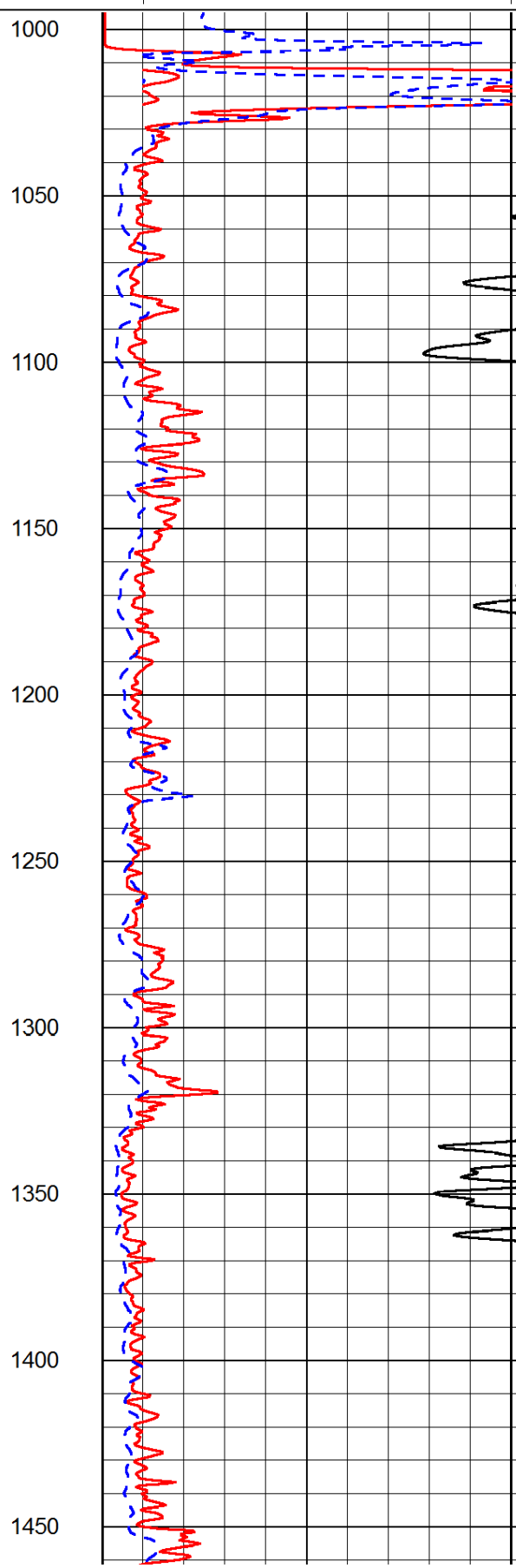
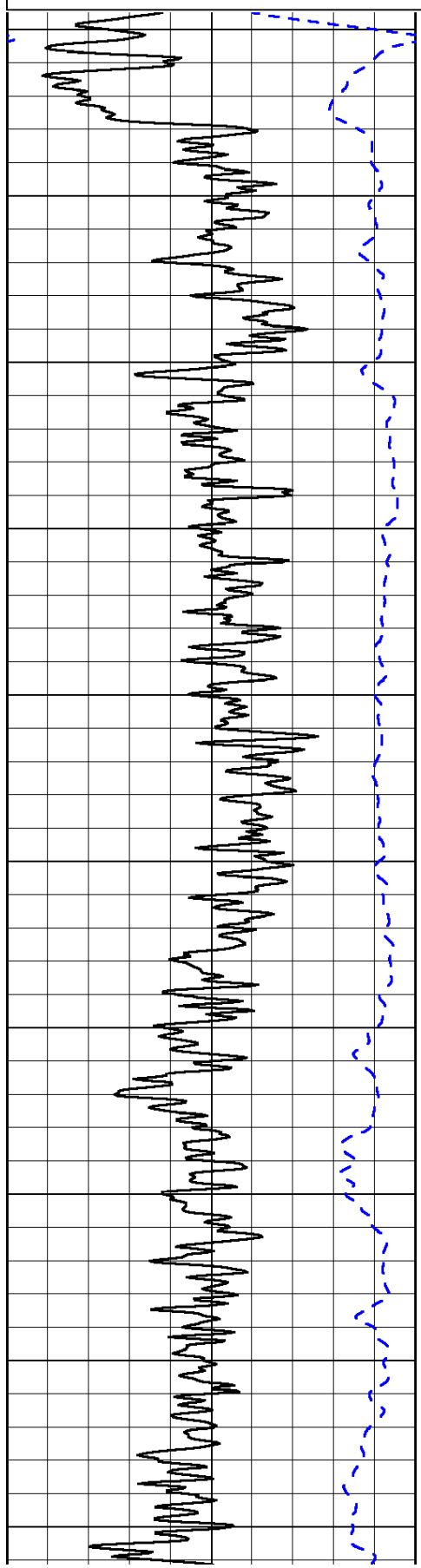
0	Gamma Ray	150
-200	SP (mV)	0

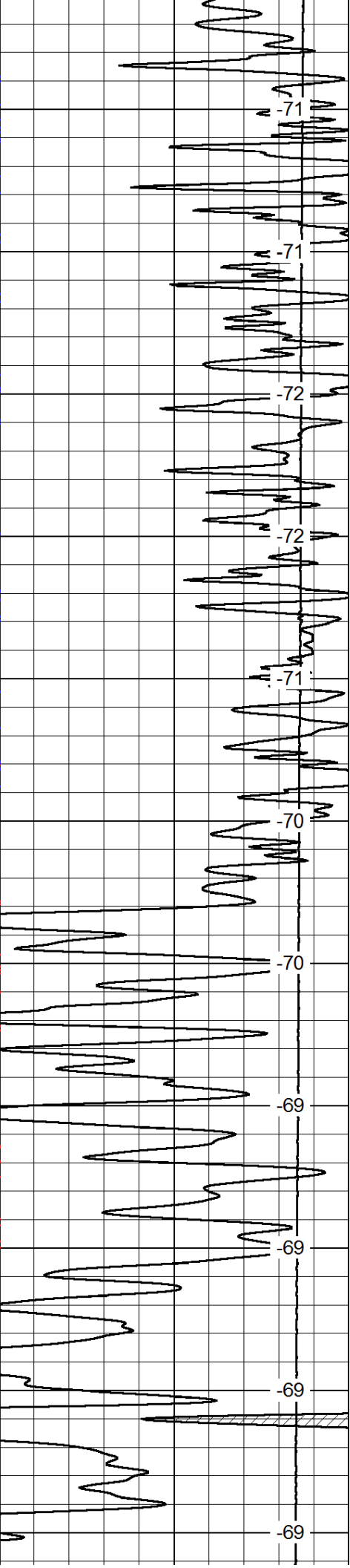
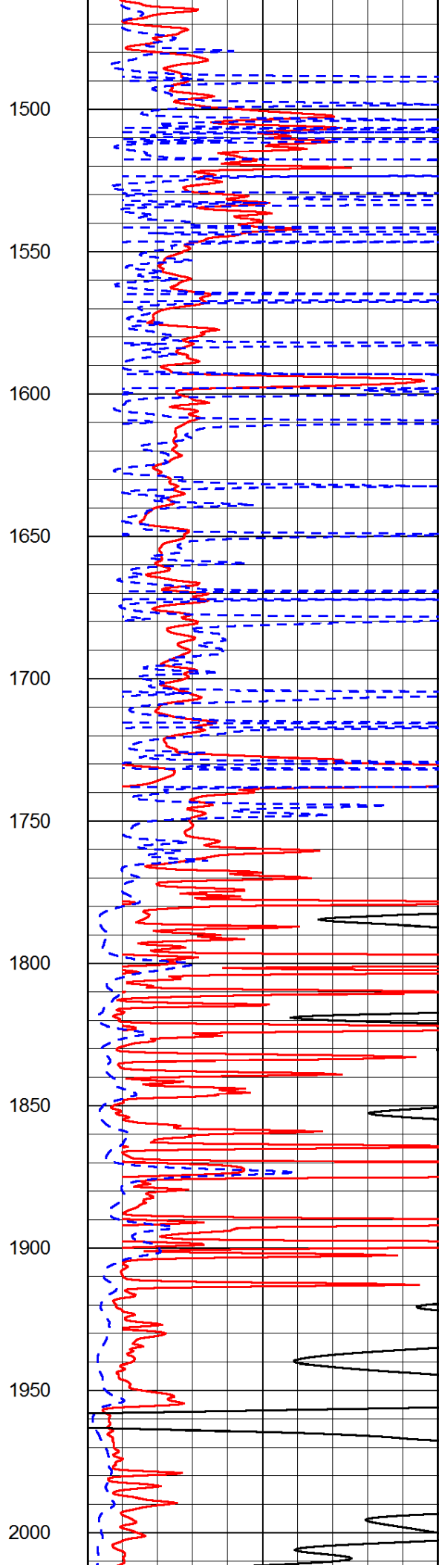
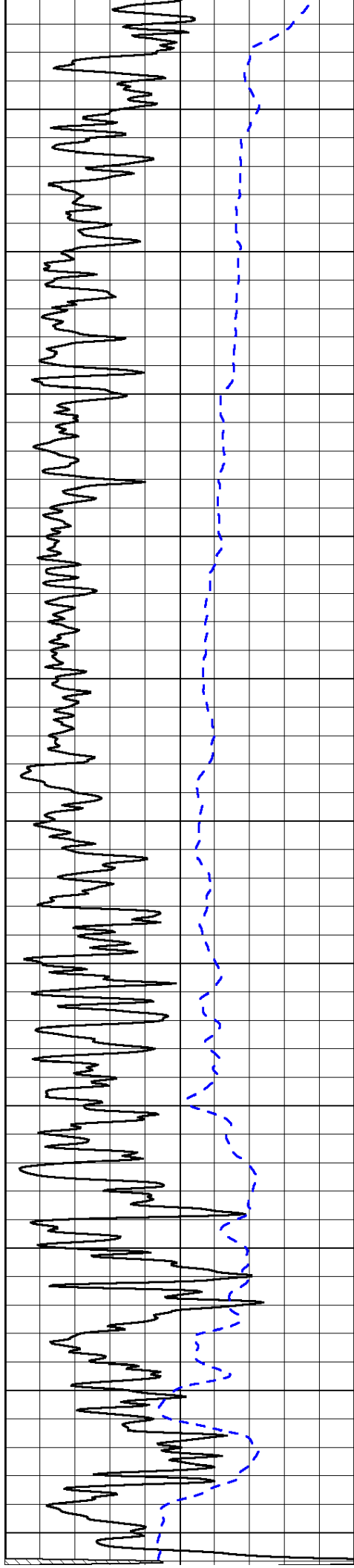
0	Shallow Resistivity	50
0	Deep Resistivity	50

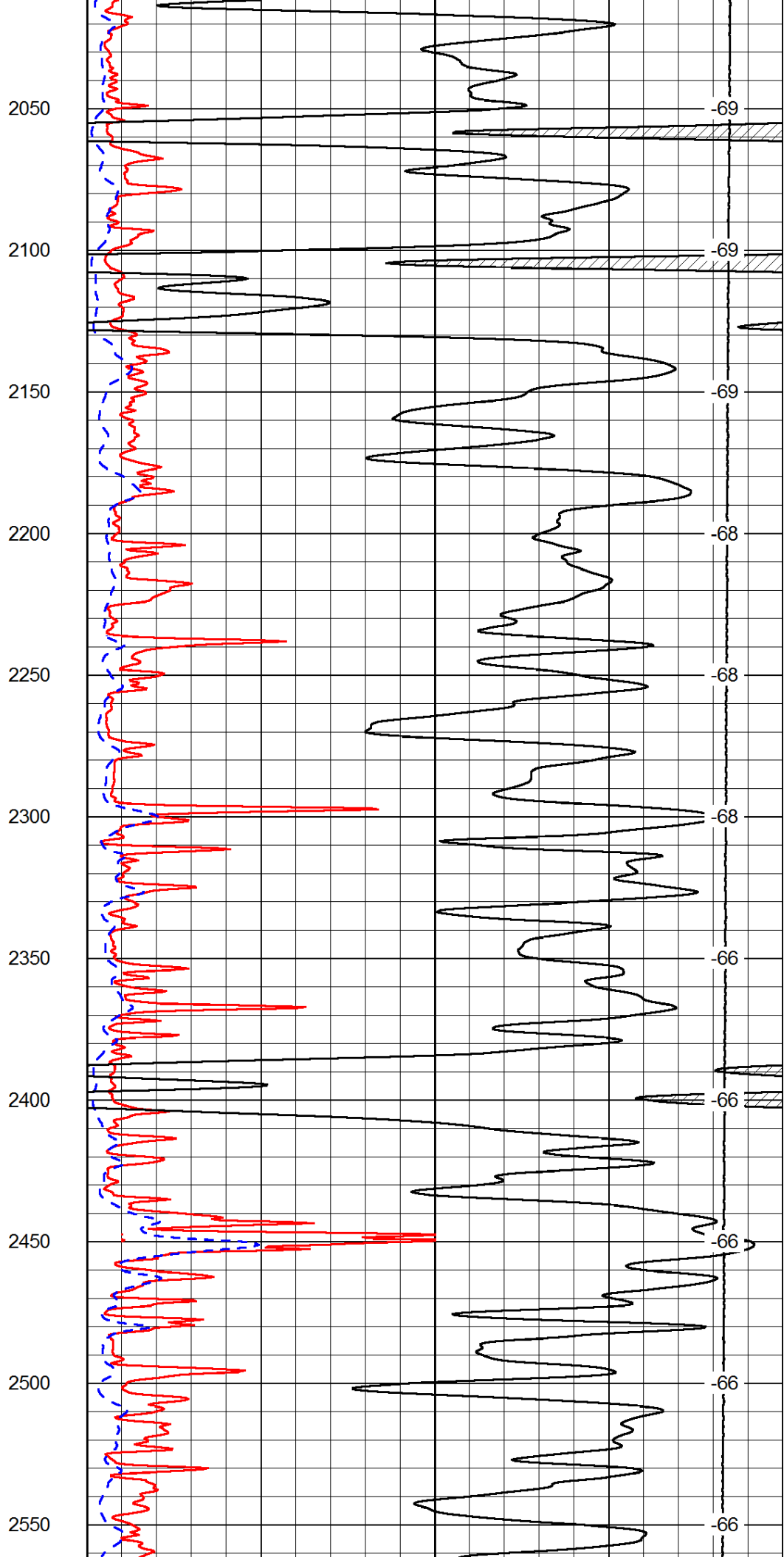
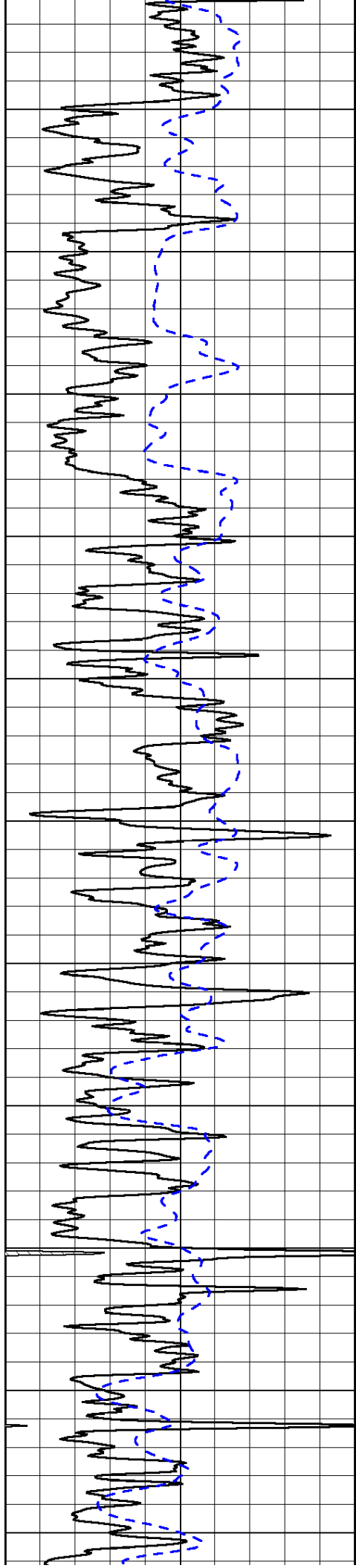
LSPD

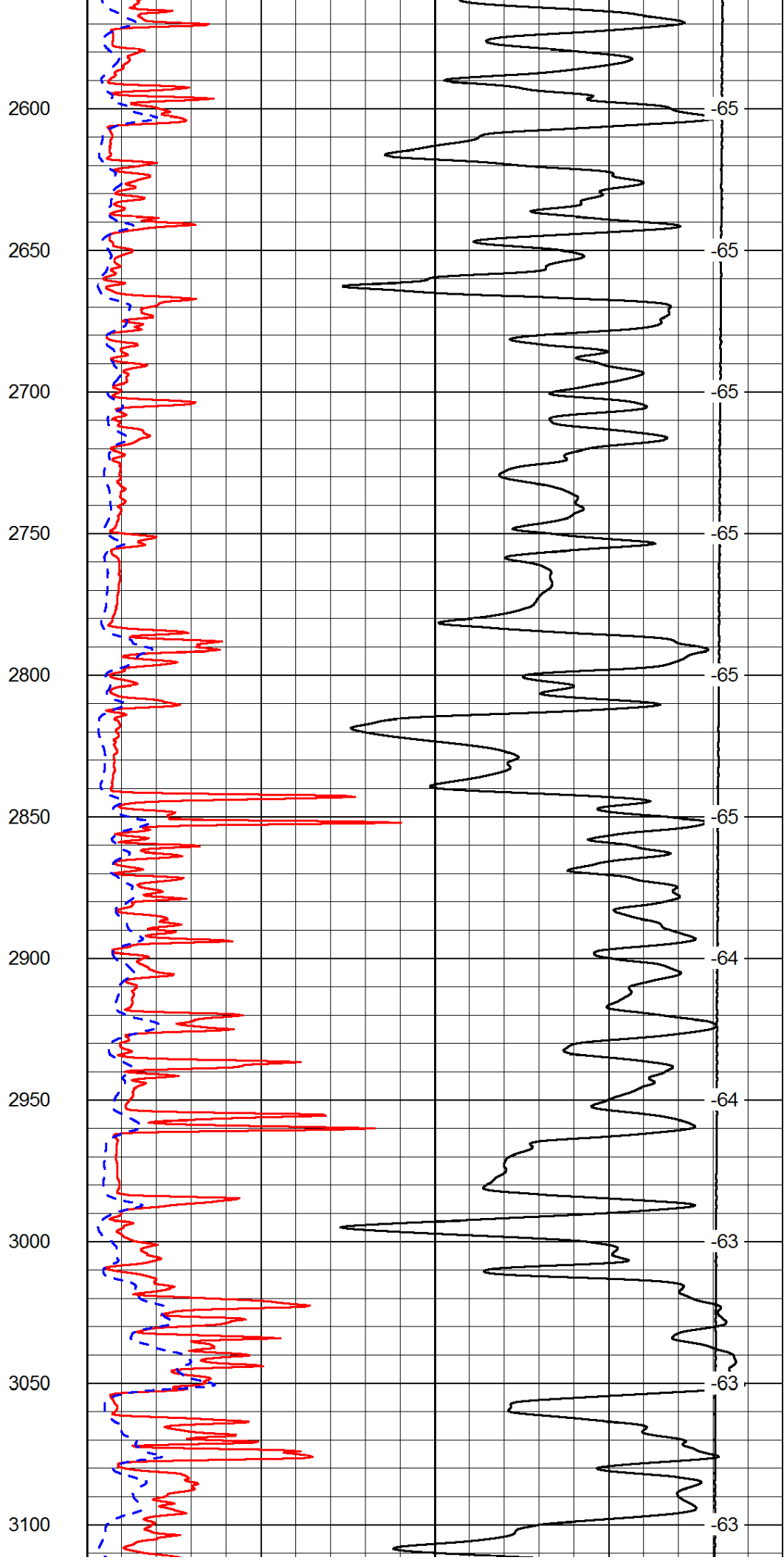
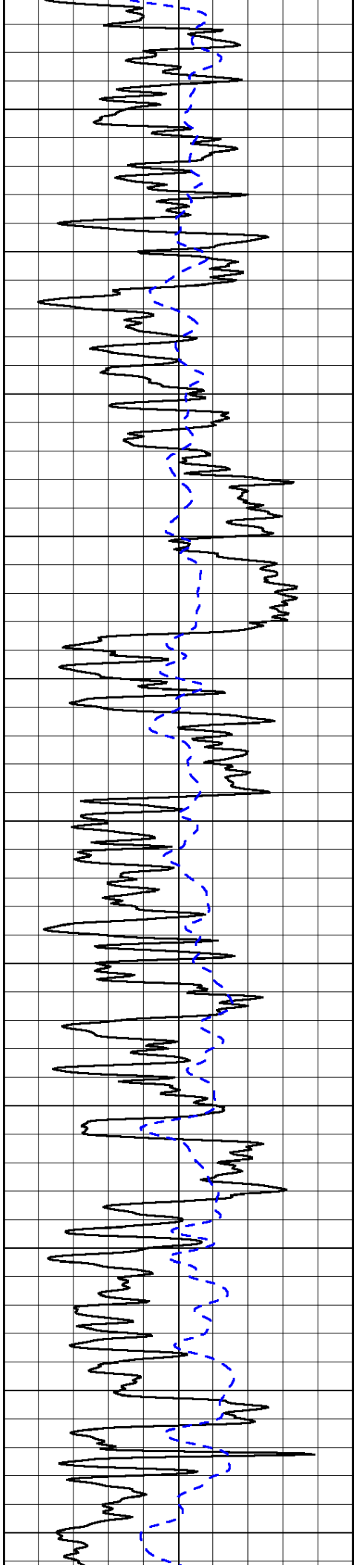
1000	Conductivity	0
15000	Line Tension	0

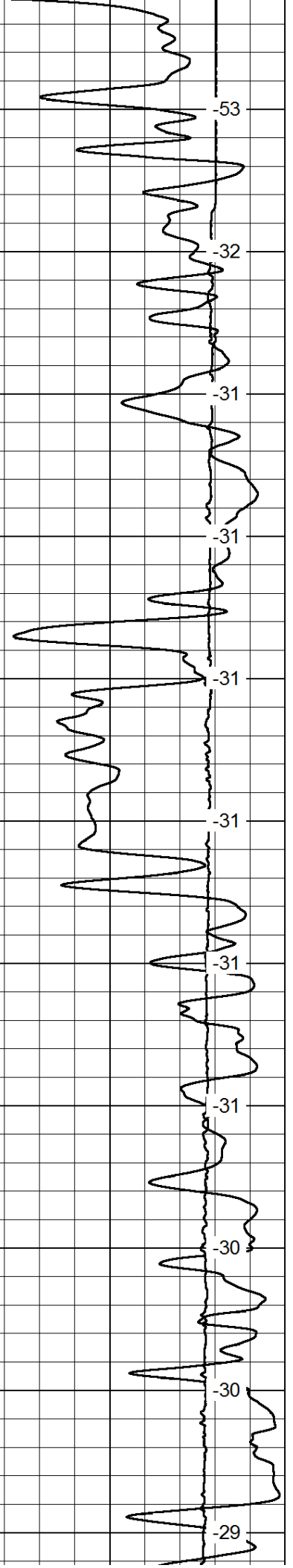
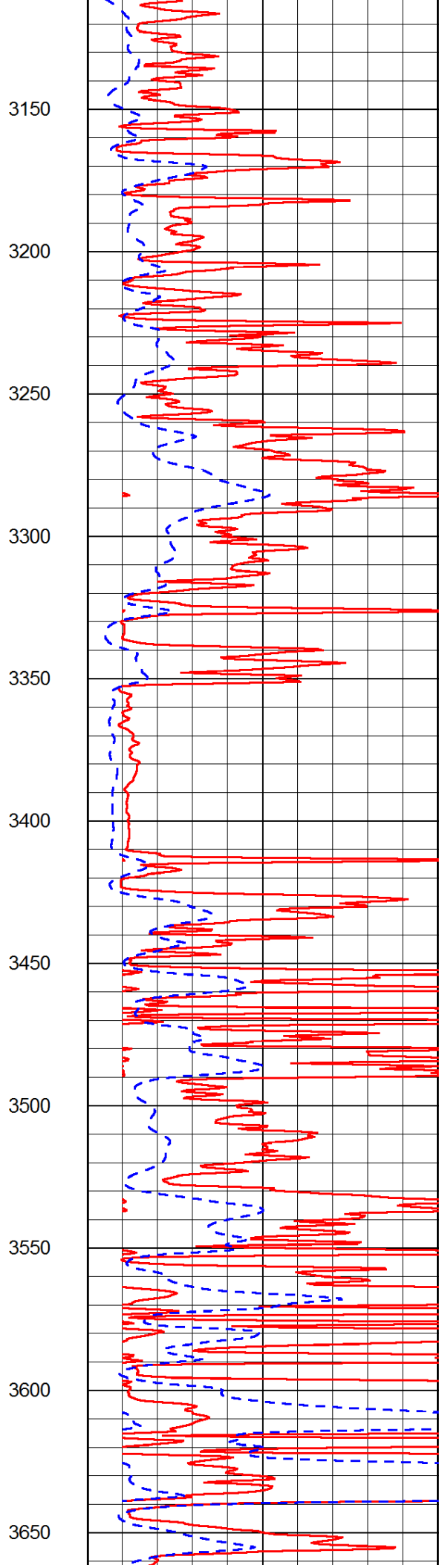
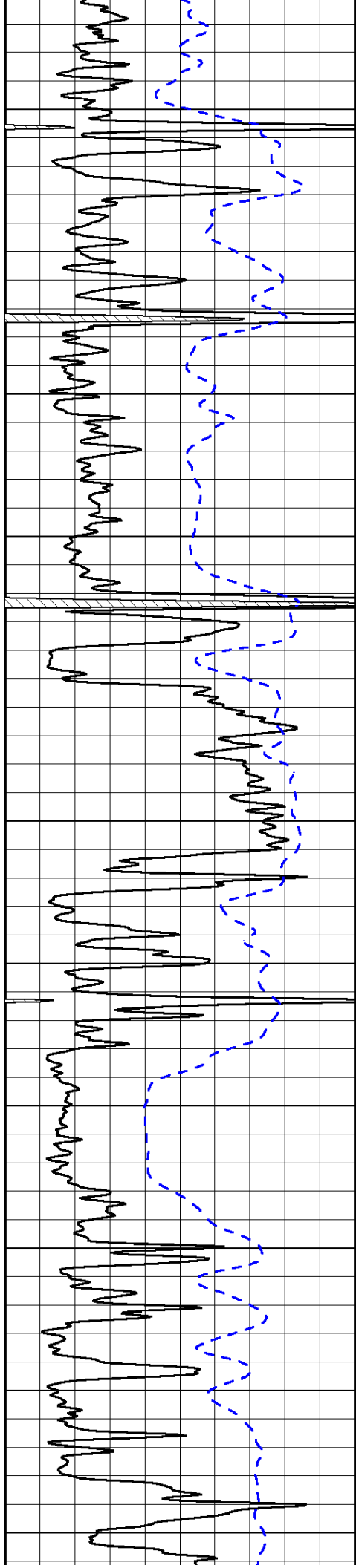
50	Shallow Resistivity	500
50	Deep Resistivity	500

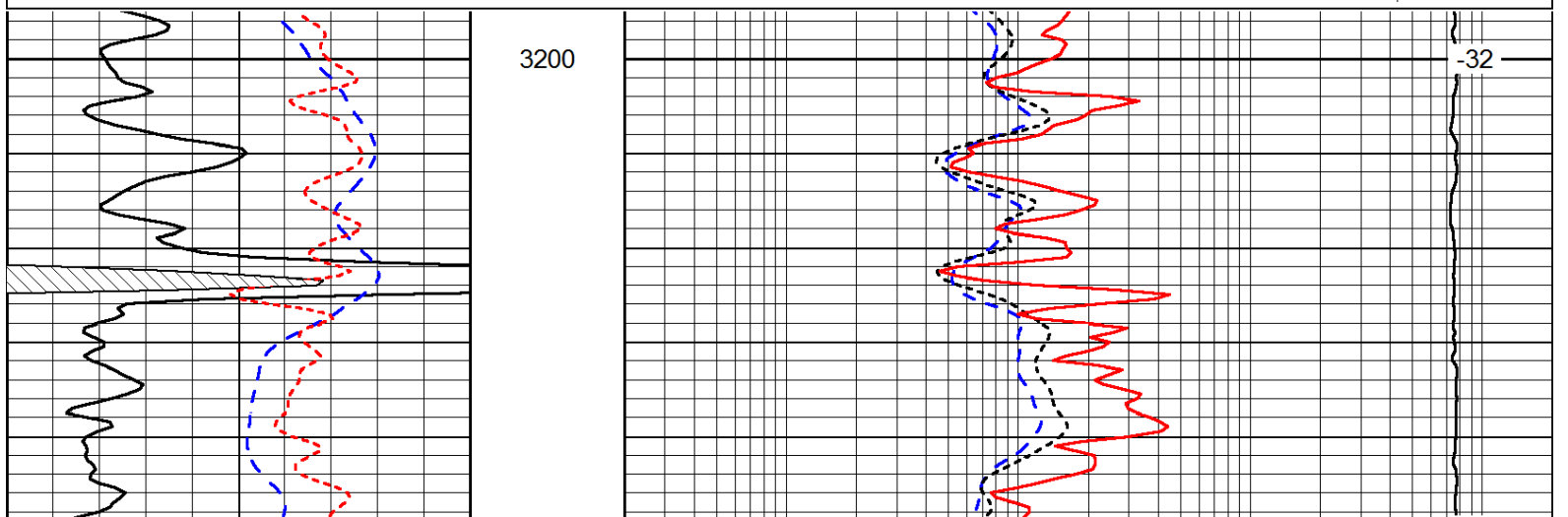
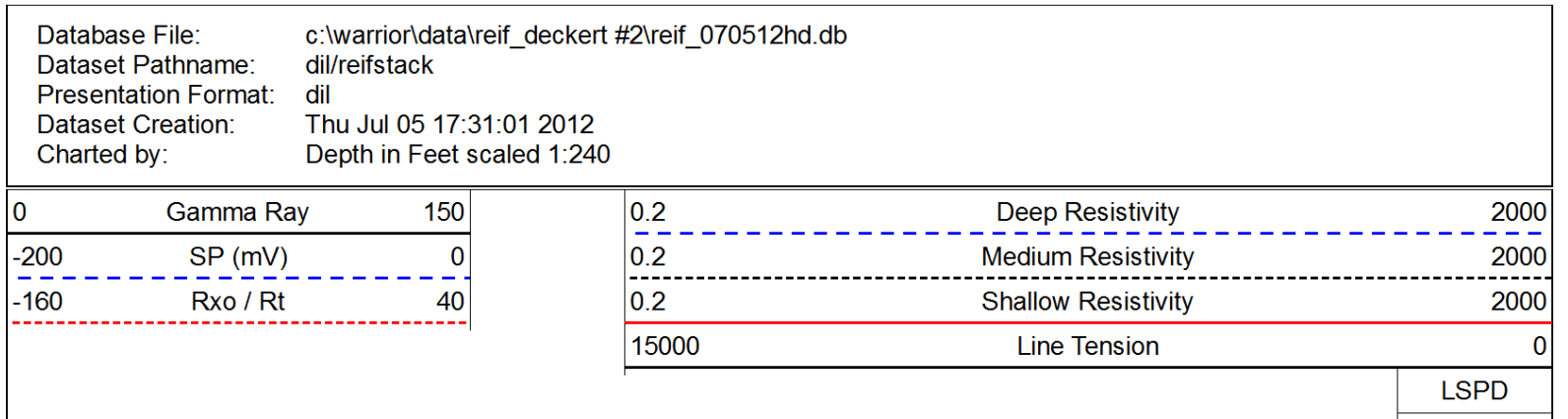
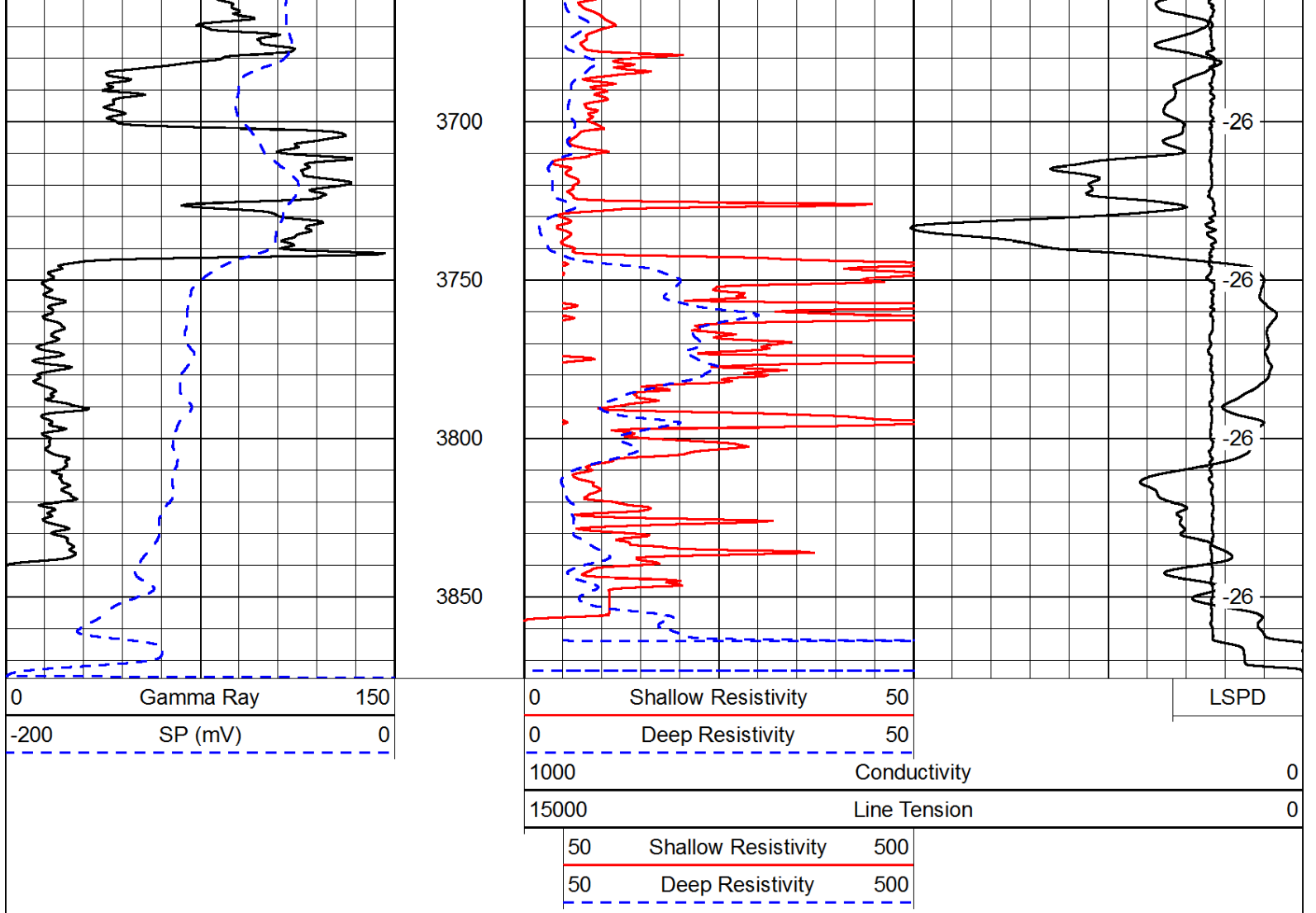


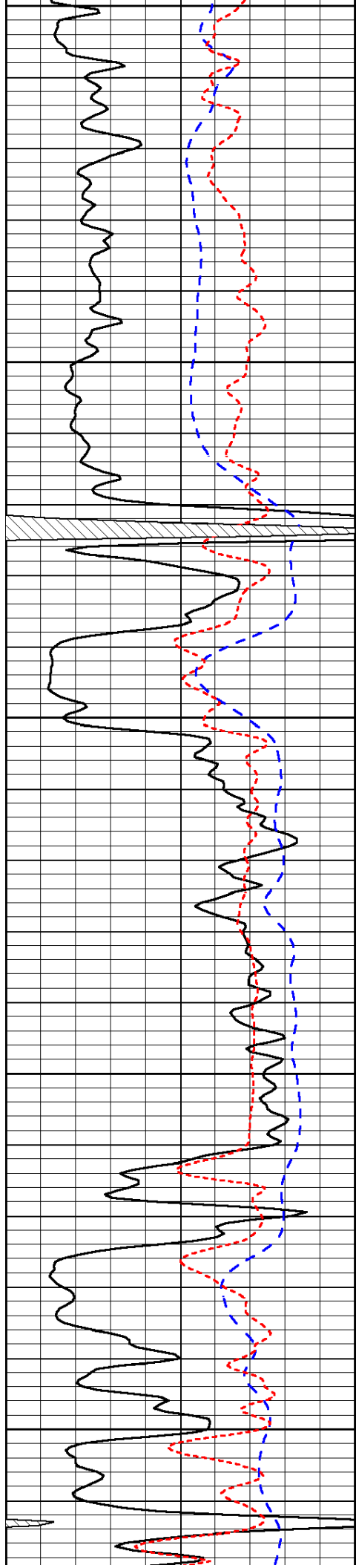












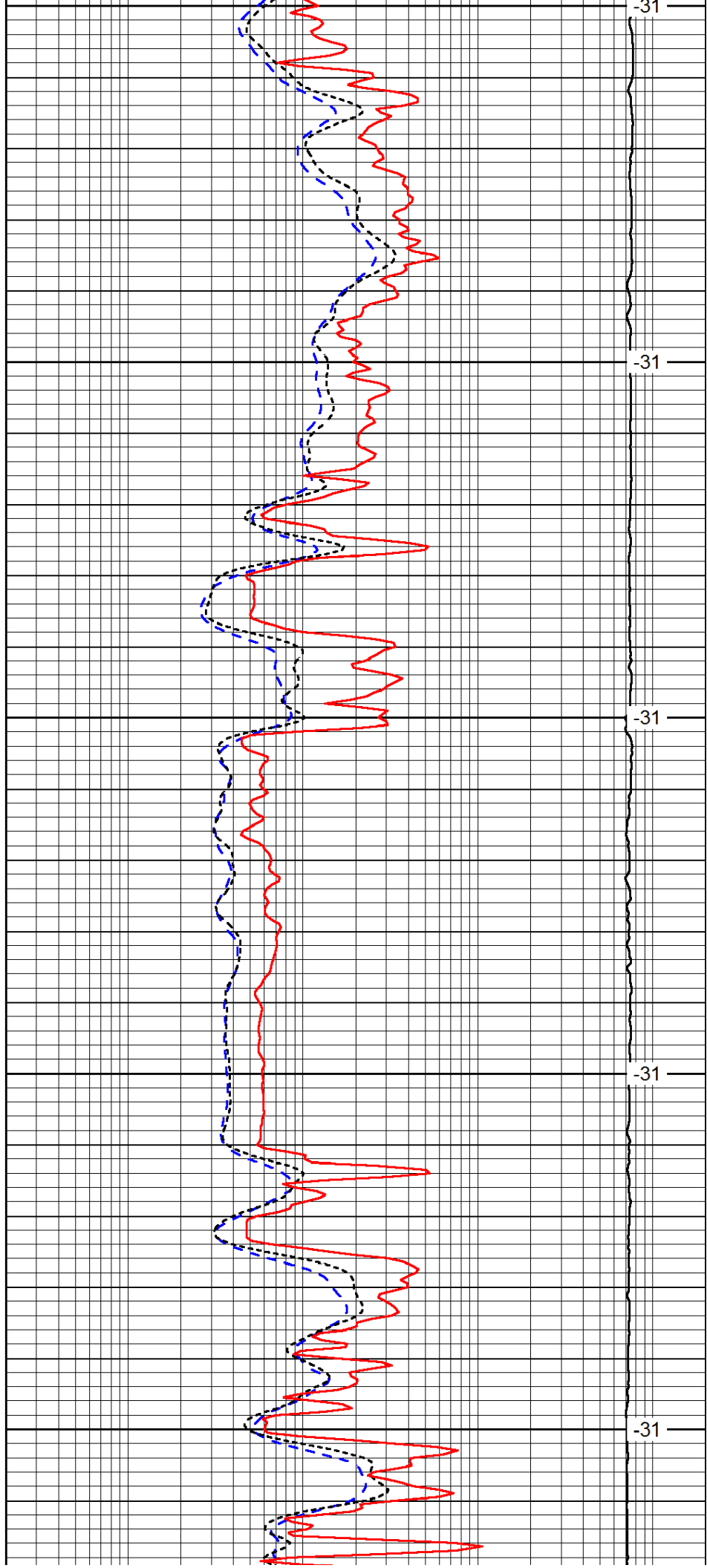
3250

3300

3350

3400

3450



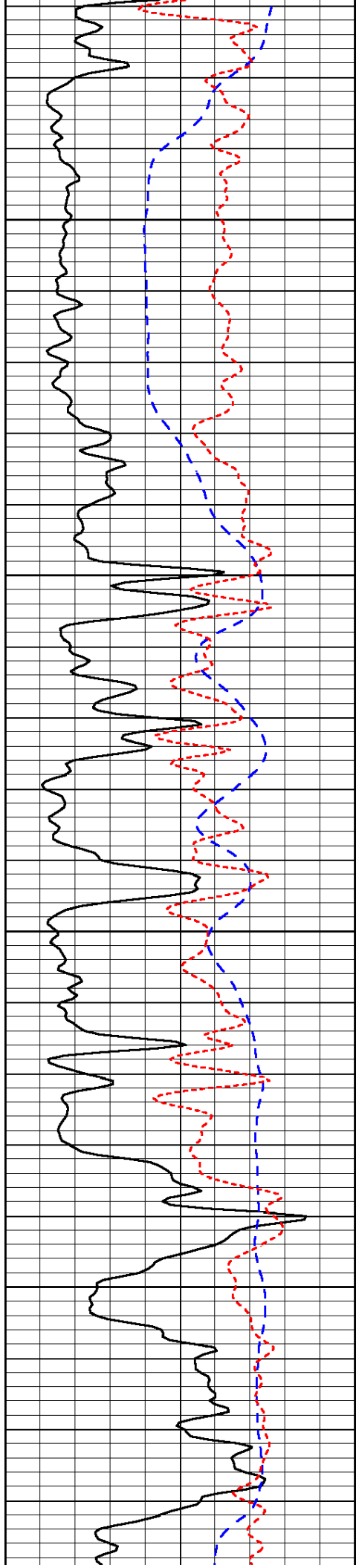
-31

-31

-31

-31

-31

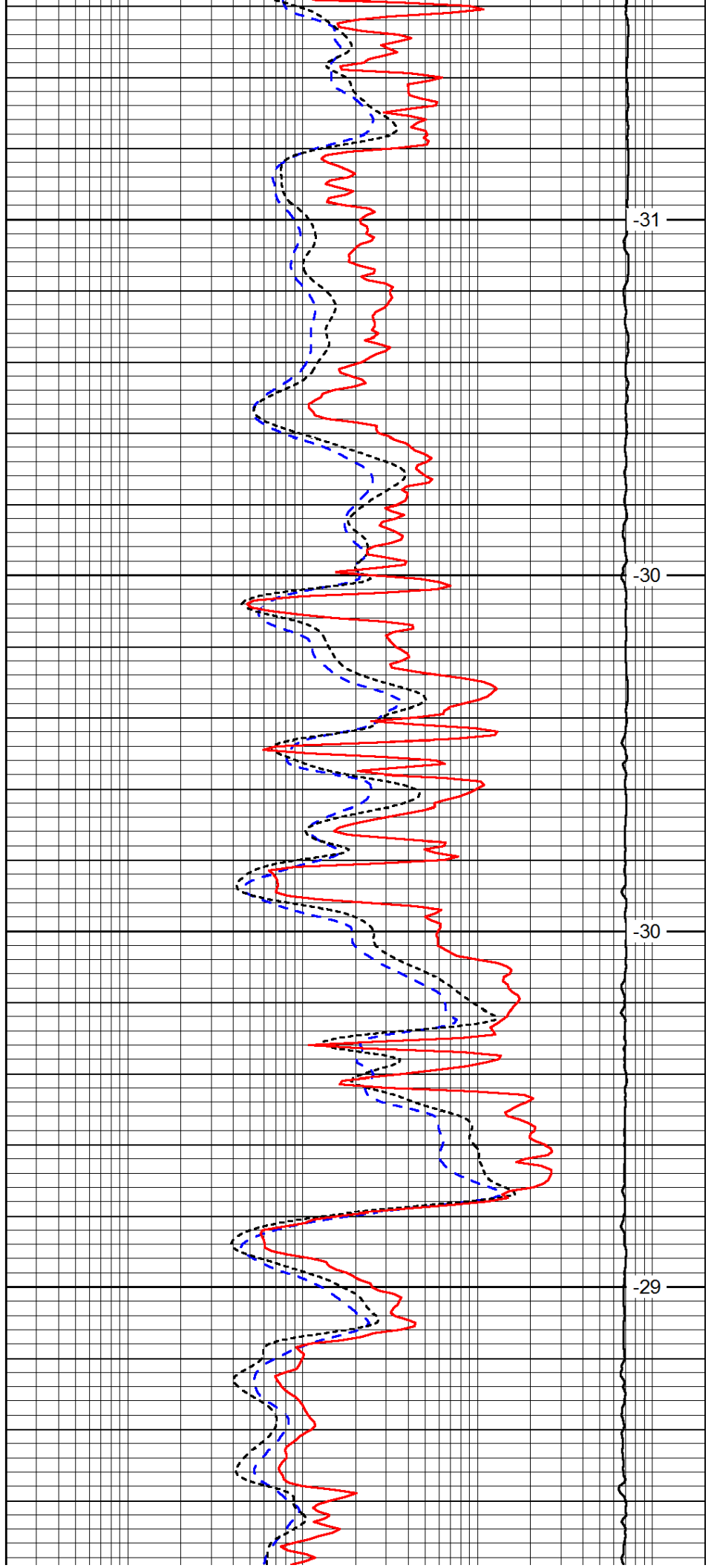


3500

3550

3600

3650

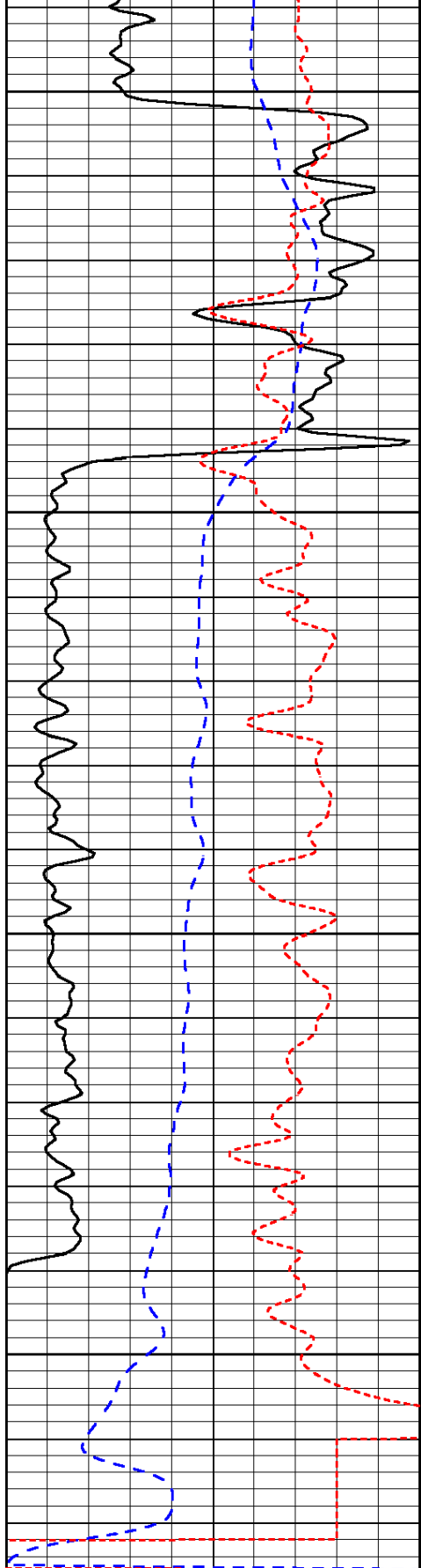


-31

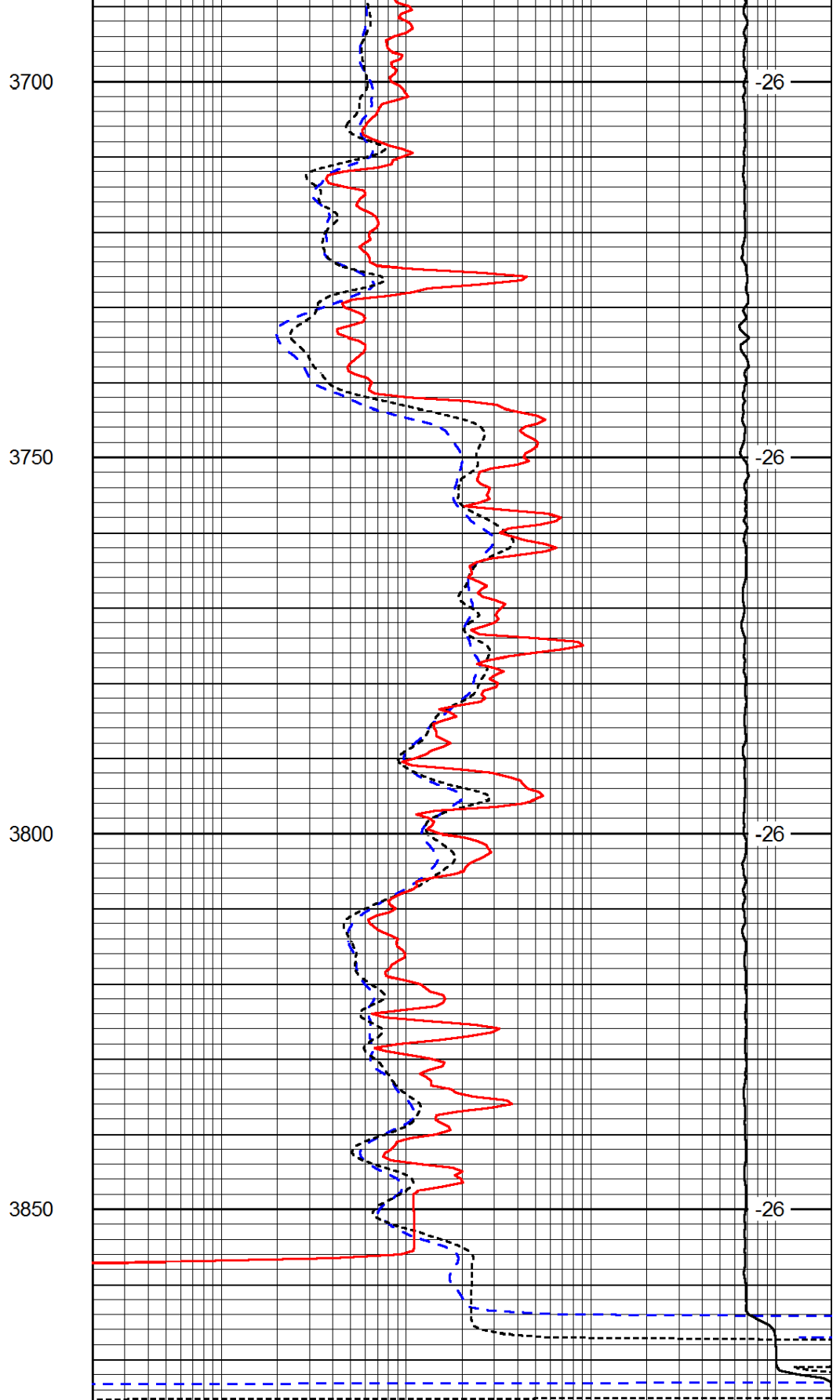
-30

-30

-29



0	Gamma Ray	150
-200	SP (mV)	0
-160	Rxo / Rt	40



0.2	Deep Resistivity	2000
0.2	Medium Resistivity	2000
0.2	Shallow Resistivity	2000
15000	Line Tension	0

LSPD