



DIGITAL LOG (785) 625-3858

Microresistivity Log

15-145-21661-00-00

API No.

Company Reif Oil & Gas Company

Well Deckert #2

Field Unnamed

County Pawnee State Kansas

Location 1130' FSL & 1195' FEL

Sec: 36 Twp: 20S Rge: 16W

Permanent Datum Ground Level Elevation 1989

Log Measured From Kelly Bushing 7 Ft. Above Perm. Datum

Drilling Measured From Kelly Bushing

Other Services CNL/CDL DIL

Elevation K.B. 1996 D.F. G.L. 1989

Date 7/5/2012

Run Number Two

Depth Driller 3870

Depth Logger 3866

Bottom Logged Interval 3865

Top Log Interval 3200

Casing Driller 8.625 @ 1006

Casing Logger 1004

Bit Size 7.875

Type Fluid in Hole Chemical

Salinity, ppm CL 9700

Density / Viscosity 8.9 41

pH / Fluid Loss 10.5 13.4

Source of Sample Flowline

Rm @ Meas. Temp 0.60 @ 90

Rmf @ Meas. Temp 0.45 @ 90

Rmc @ Meas. Temp 0.81 @ 90

Source of Rmf / Rmc Charts

Rm @ BHT 0.46 @ 117

Operating Rig Time 4 Hours

Max Rec. Temp. F 117

Equipment Number 91

Location Hays

Recorded By D. Schmidt

Witnessed By Jim Musgrove

<<< Fold Here >>>

All interpretations are opinions based on inferences from electrical or other measurements and we cannot and do not guarantee the accuracy or correctness of any interpretation, and we shall not, except in the case of gross or willful negligence on our part, be liable or responsible for any loss, costs, damages, or expenses incurred or sustained by anyone resulting from any interpretation made by any of our officers, agents or employees. These interpretations are also subject to our general terms and conditions set out in our current Price Schedule.

Comments

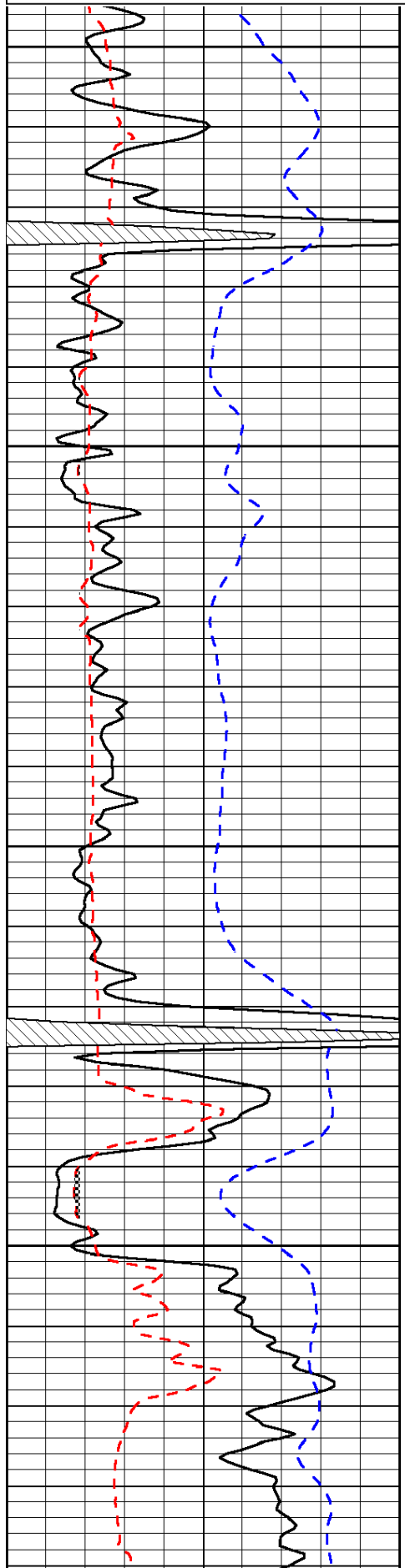
Thank you for using Log-Tech, Inc. (785) 625-3858
Pawnee Rock (SW 70th & Hwy 156),
2 1/2 W to SW 140th Ave., 1/4 N, W into

Database File: c:\warrior\data\reif_deckert #2\reif_070512hd.db
Dataset Pathname: dil/reifstack
Presentation Format: micro
Dataset Creation: Thu Jul 05 17:31:01 2012
Charted by: Depth in Feet scaled 1:240

0	Gamma Ray	150
6	Micro Log Caliper (GAPI)	16
-200	SP (mV)	0

0	Micro Inverse 1 X 1	40
0	Micro Normal 2"	40
15000	Line Weight	0

LSPD

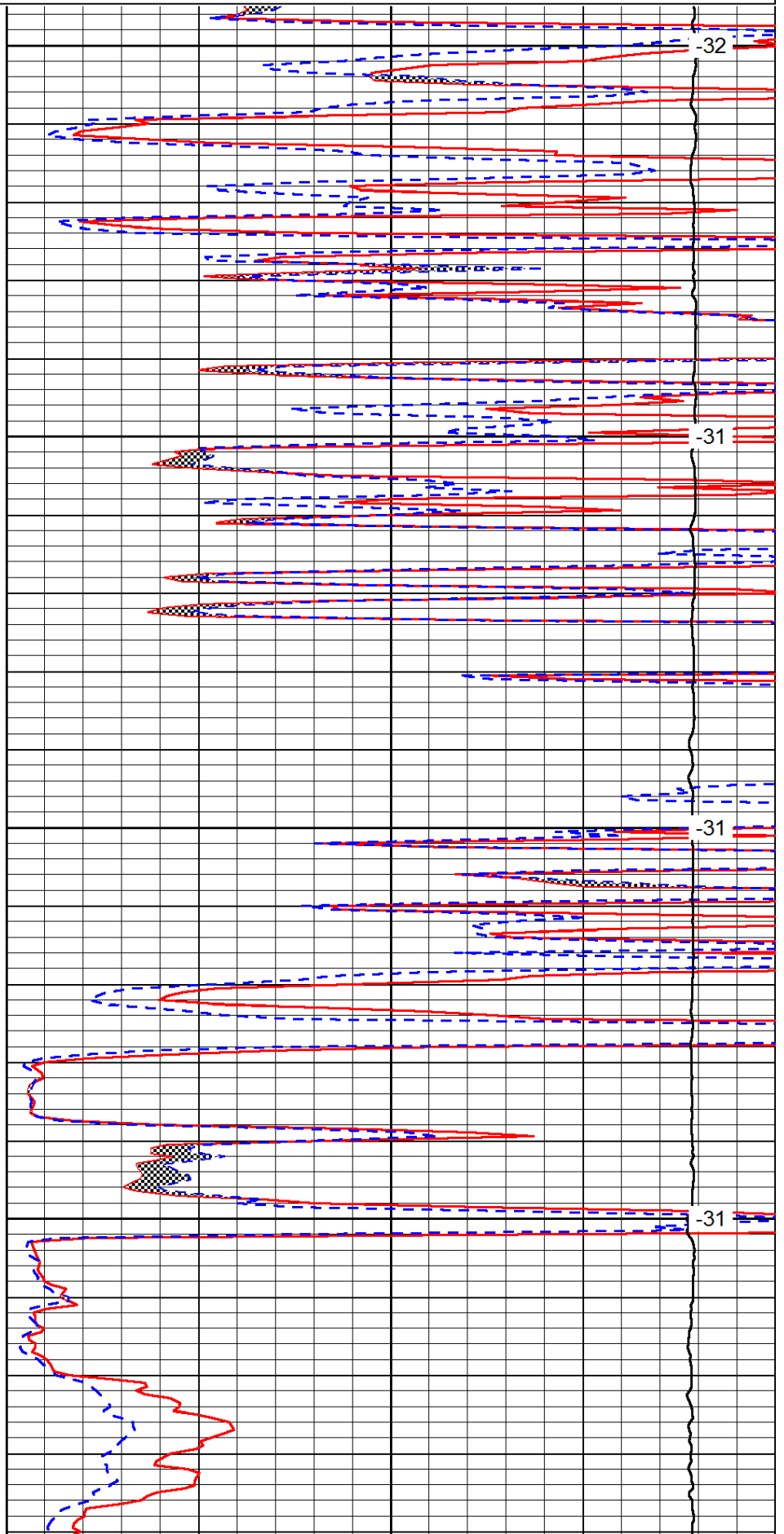


3200

3250

3300

3350

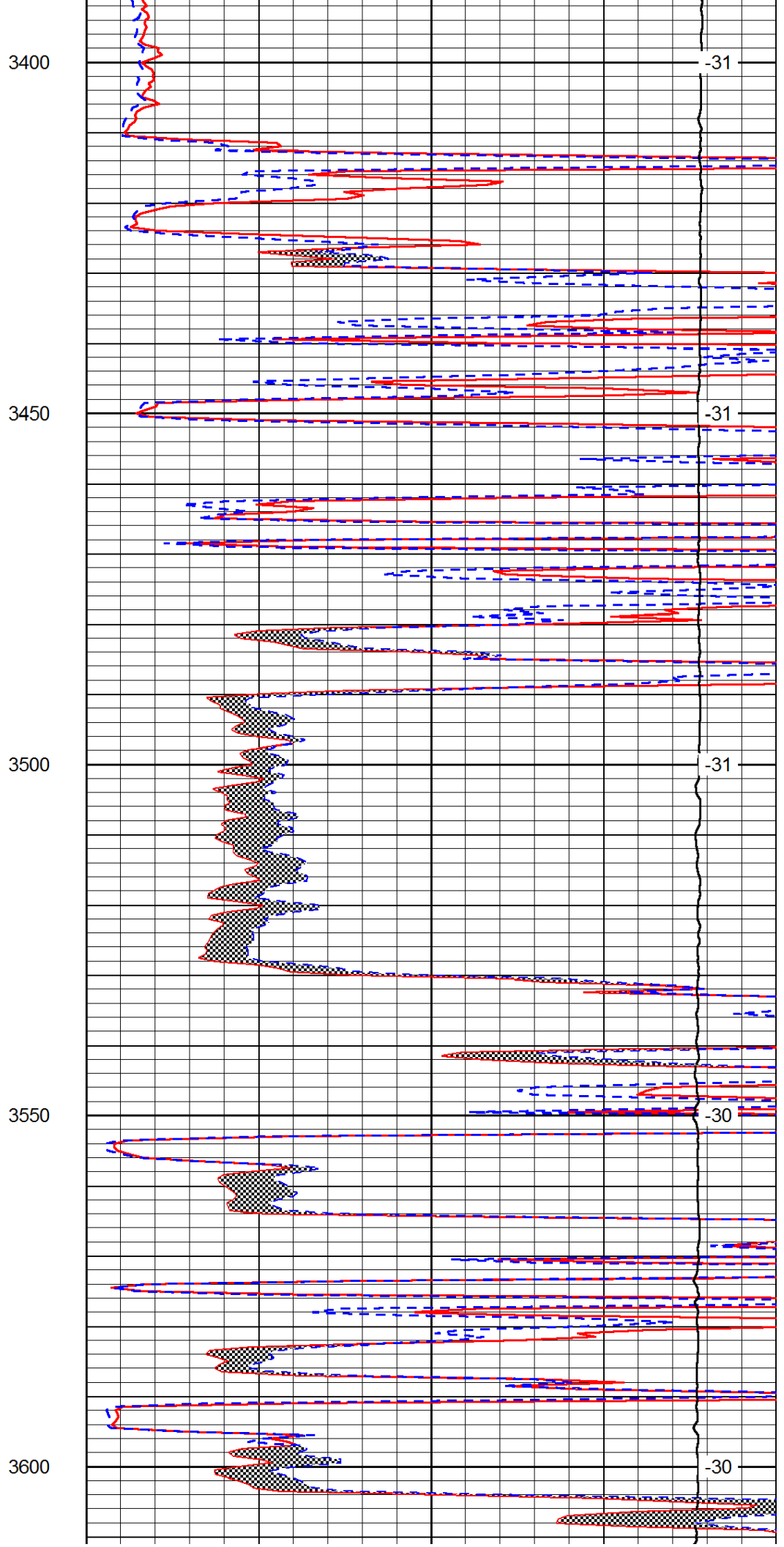
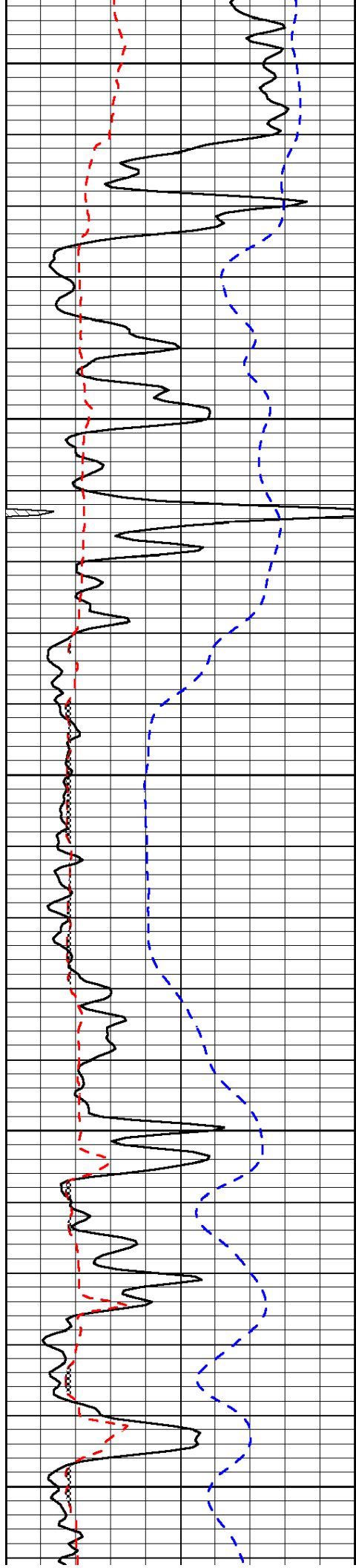


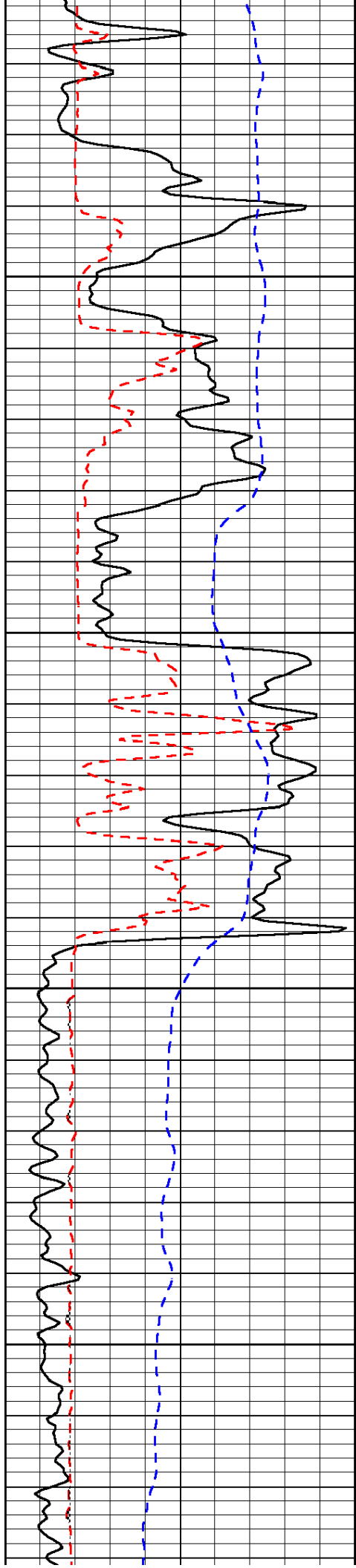
-32

-31

-31

-31



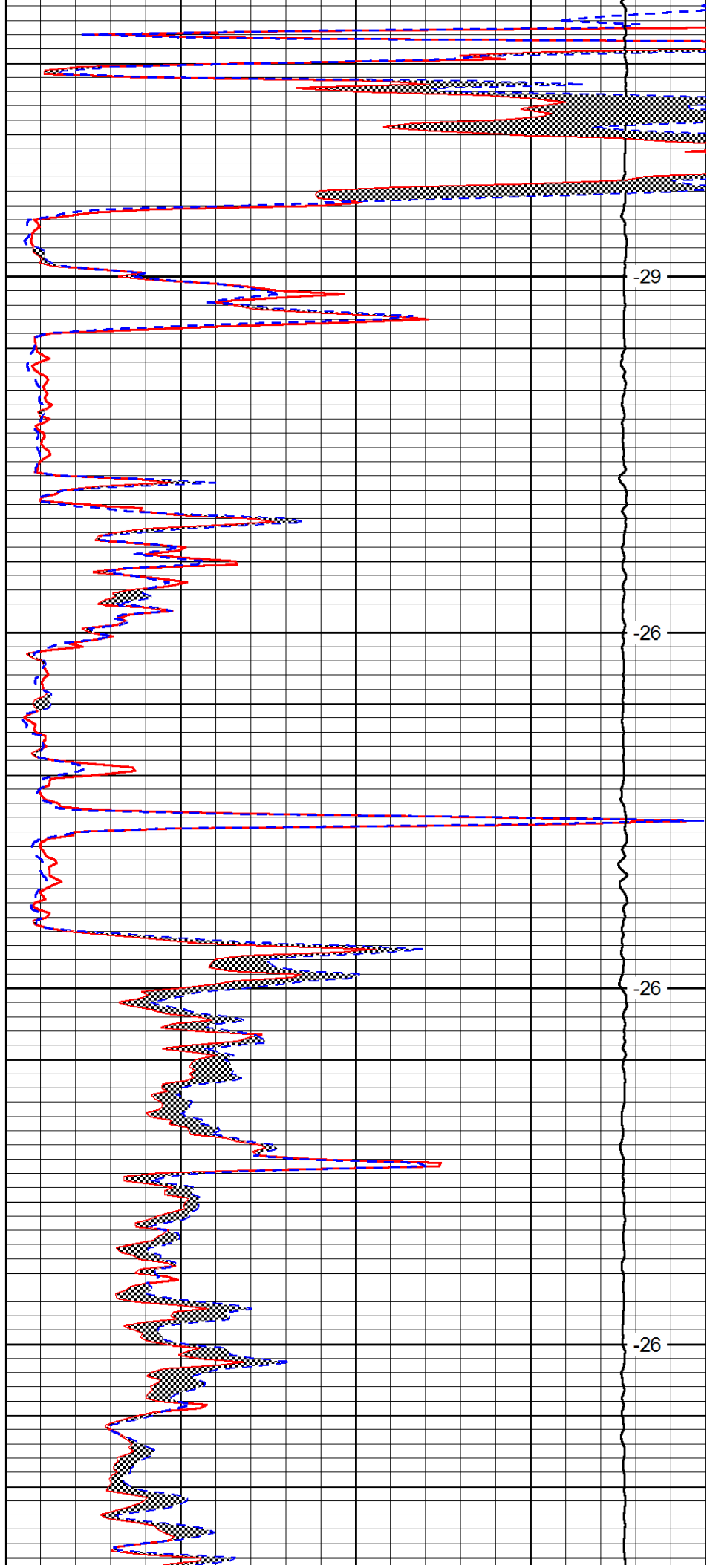


3650

3700

3750

3800

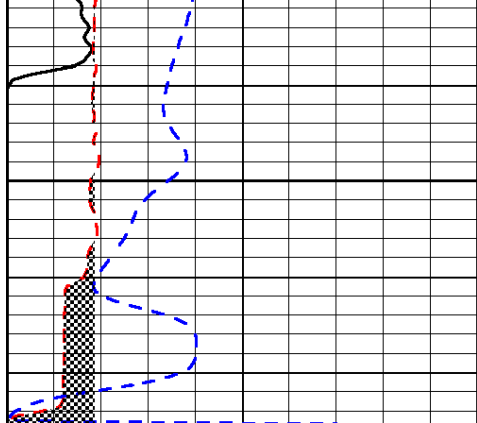


-29

-26

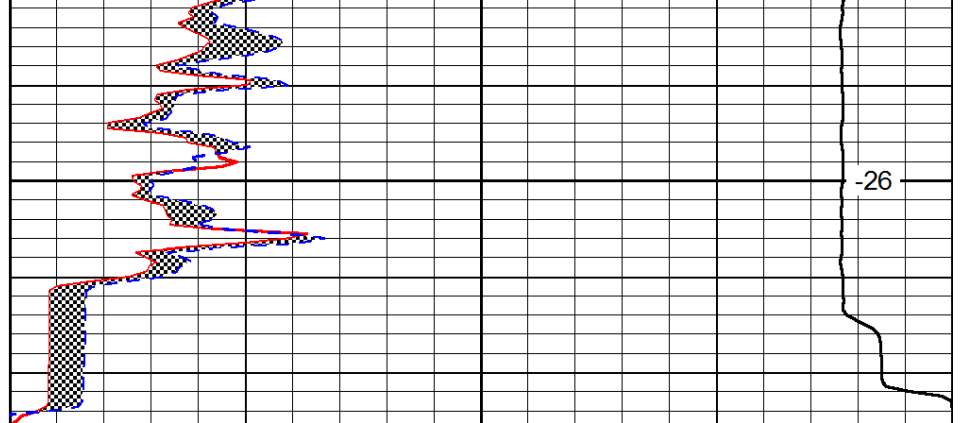
-26

-26



0	Gamma Ray	150
6	Micro Log Caliper (GAPI)	16
-200	SP (mV)	0

3850



0	Micro Inverse 1 X 1	40
0	Micro Normal 2''	40
15000	Line Weight	0

-26

LSPD