



DIGITAL LOG (785) 625-3858

Dual Compensated Porosity Log

15-145-21661-00-00

API No. 15-145-21661-00-00

Company Reif Oil & Gas Company
 Well Deckert #2
 Field Unnamed
 County Pawnee State Kansas

Location 1130' FSL & 1195' FEL

Sec: 36 Twp: 20S Rge: 16W

Other Services
 DIL
 MEL

Permanent Datum Ground Level Elevation 1989
 Log Measured From Kelly Bushing 7 Ft. Above Perm. Datum
 Drilling Measured From Kelly Bushing

Elevation
 K.B. 1996
 D.F. 1989
 G.L. 1989

Date	7/5/2012	
Run Number	One	
Type Log	CNL / CDL	
Depth Driller	3870	
Depth Logger	3866	
Bottom Logged Interval	3845	
Top Logged Interval	3200	
Type Fluid In Hole	Chemical	
Salinity, PPM CL	9700	
Density Level	8.9	
Level	Full	
Max. Rec. Temp. F	117	
Operating Rig Time	4 Hours	
Equipment -- Location	91 Hays	
Recorded By	D. Schmidt	
Witnessed By	Jim Musgrove	

Borehole Record				Casing Record			
Run No.	Bit	From	To	Size	Wgt.	From	To
1	12.25	00	1006	8.625	24#	00	1006
2	7.875	1006	3870				

<<< Fold Here >>>

All interpretations are opinions based on inferences from electrical or other measurements and we cannot and do not guarantee the accuracy or correctness of any interpretation, and we shall not, except in the case of gross or willful negligence on our part, be liable or responsible for any loss, costs, damages, or expenses incurred or sustained by anyone resulting from any interpretation made by any of our officers, agents or employees. These interpretations are also subject to our general terms and conditions set out in our current Price Schedule.

Comments

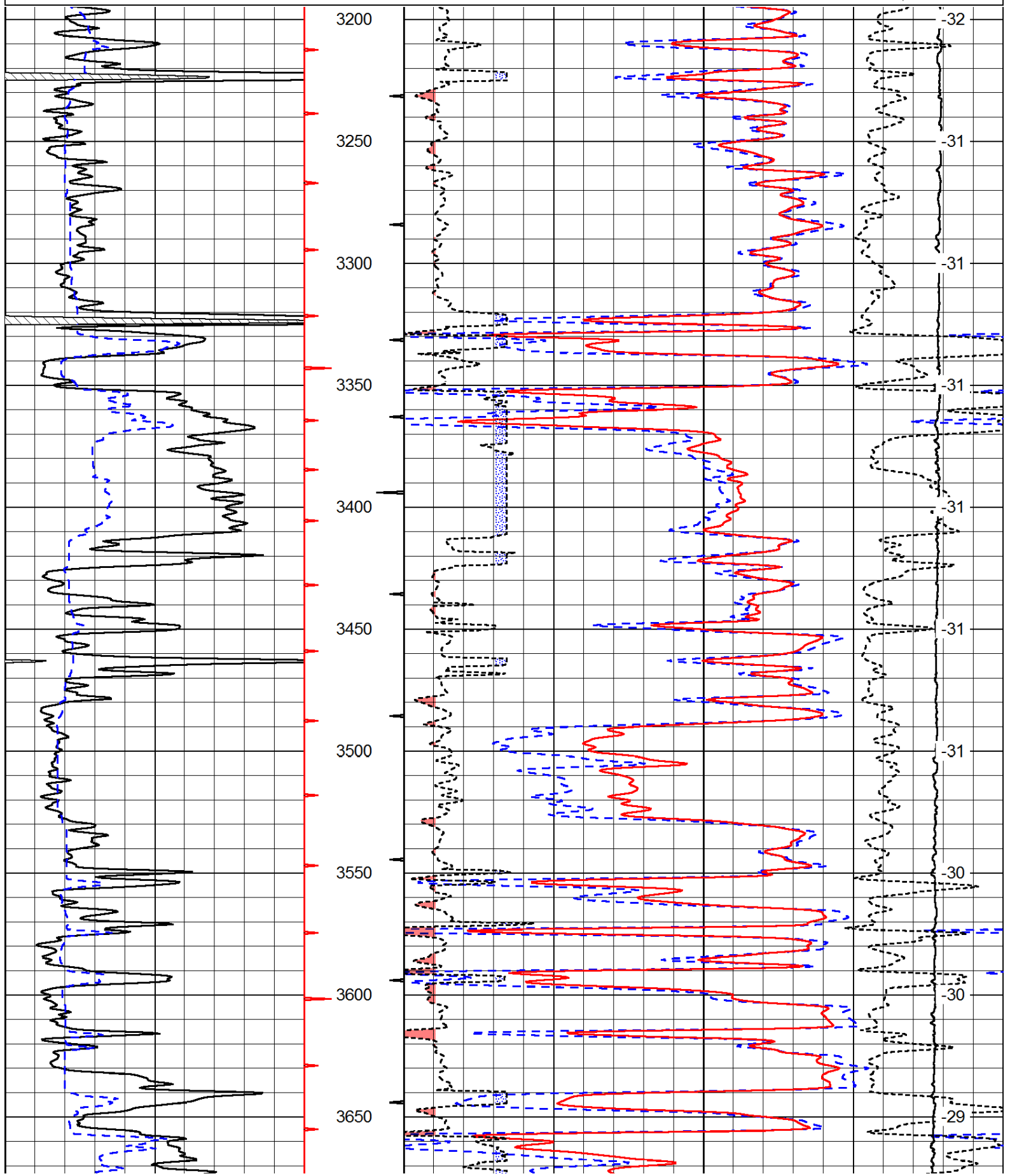
Thank you for using Log-Tech, Inc.
 (785) 625-3858

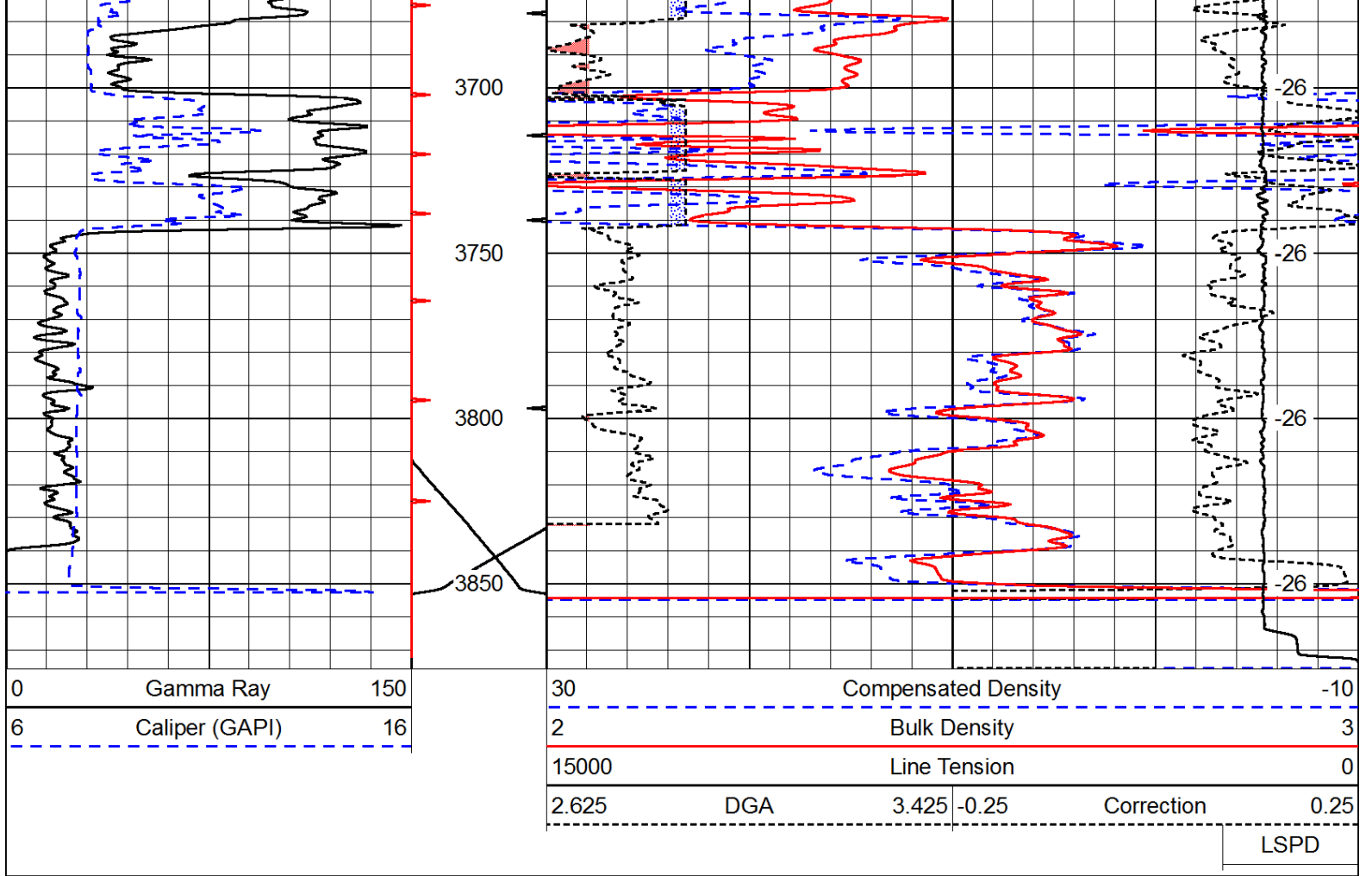
Pawnee Rock (SW 70th & Hwy 156),
 2 1/2 W to SW 140th Ave., 1/4 N, W into

Database File: c:\warrior\data\reif_deckert #2\reif_070512hd.db
 Dataset Pathname: dil/reifstack
 Presentation Format: cdl
 Dataset Creation: Thu Jul 05 17:31:01 2012
 Charted by: Depth in Feet scaled 1:600

0	Gamma Ray	150
6	Caliper (GAPI)	16

30	Compensated Density		-10
2	Bulk Density		3
15000	Line Tension		0
2.625	DGA	3.425	-0.25
Correction			0.25
LSPD			





Database File: c:\warrior\data\reif_deckert #2\reif_070512hd.db
 Dataset Pathname: dil/reifstack
 Presentation Format: cndlspec
 Dataset Creation: Thu Jul 05 17:31:01 2012
 Charted by: Depth in Feet scaled 1:240

