

**MIDWEST SURVEYS**  
 LOGGING - PERFORATING - CONSULTING SERVICES  
 P.O. Box 68, Osawatomie, KS 66064  
 913 / 765 - 2128

**GAMMA RAY / NEUTRON / CCL**

File No.

Company **JTC Oil, Inc.**

Well **ABC No.-8**

Field **Paola / Rantoul**

County **Miami** State **Kansas**

Location **1260' FSL & 2880' FEL  
NE-NE-SE-SW**

Other Services  
**Perforate**

API # 15-121-29,073

Sec. 22	Twp. 17S	Rge. 22E	Elevation
Permanent Datum	GL		NA
Log Measured From	GL		NA
Drilling Measured From	GL		NA

Date

05-17-2012

Run Number

One

Depth Driller

377.0

Depth Logger

371.0

Bottom Logged Interval

370.0

Top Log Interval

20.0

Fluid Level

Full

Type Fluid

Water

Density / Viscosity

NA

Salinity - PPM Cl

NA

Max Recorded Temp

NA

Estimated Cement Top

0.0

Equipment No.

104

Recorded By

Gary Windisch

Witnessed By

Tom Cain

No.	BIT	BORE-HOLE RECORD		CASING RECORD		TO
		FROM	TO	FROM	TO	
One	9.875"	0.0	20.0	7.00"	0.0	20.0
Two	5.625"	20.0	377.0	2.875"	0.0	373.1

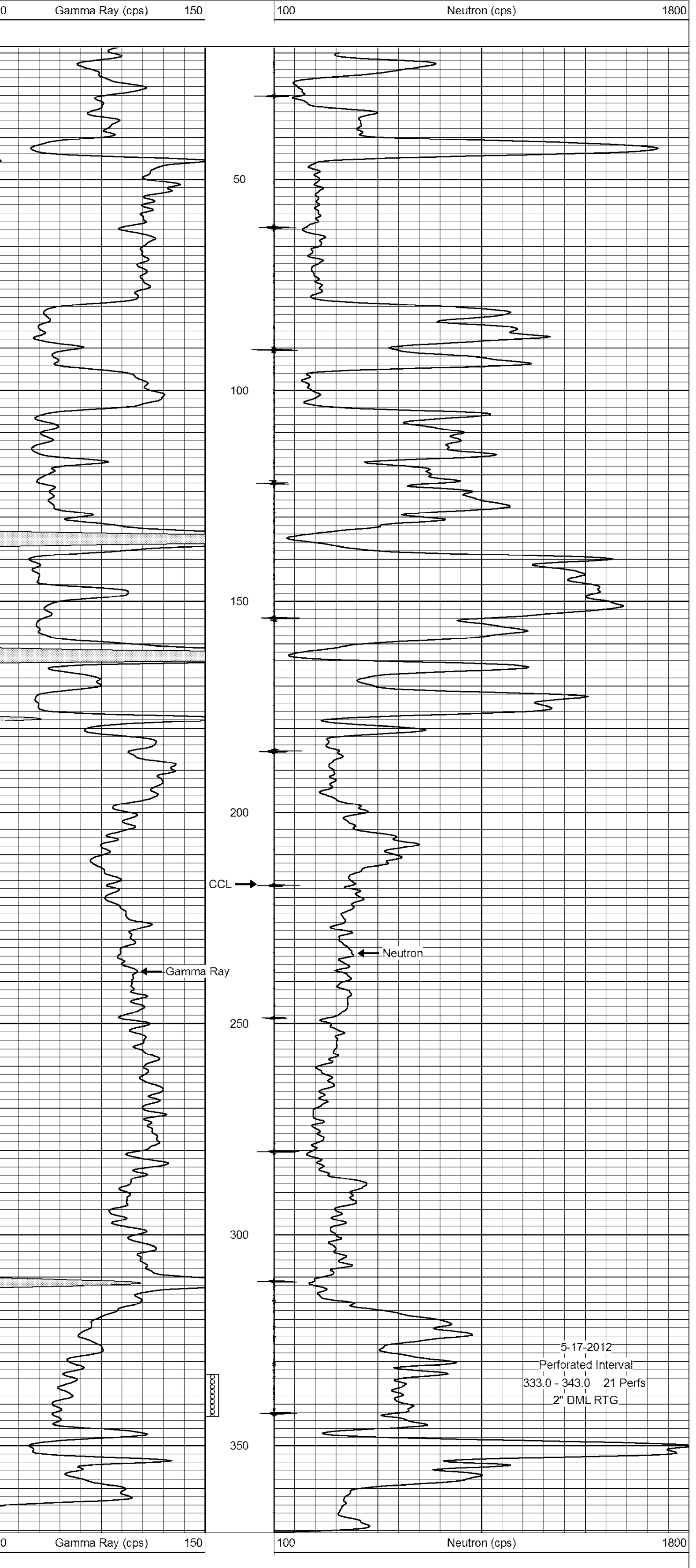
<<< Fold Here >>>

All interpretations are opinions based on inferences from electrical or other measurements and we cannot and do not guarantee the accuracy or correctness of any interpretation, and we shall not, except in the case of gross or willful negligence on our part, be liable or responsible for any loss, costs, damages, or expenses incurred or sustained by anyone resulting from any interpretation made by any of our officers, agents or employees. These interpretations are also subject to our general terms and conditions set out in our current Price Schedule.

Comments

Drilling Contractor :  
JTC Oil, Inc.

Database File: abc8.db  
 Dataset Pathname: pass1  
 Presentation Format: gr-n-ccl  
 Dataset Creation: Thu May 17 14:14:22 2012 by Log SCH 111116  
 Charted by: Depth in Feet scaled 1:240



5-17-2012  
 Perforated Interval  
 333.0 - 343.0 21 Perfs  
 2" DML RTG