



MIDWEST SURVEYS
 LOGGING - PERFORATING - CONSULTING SERVICES
 P.O. Box 68, Osawatomie, KS 66064
 913 / 755 - 2128

GAMMA RAY / NEUTRON / CCL

File No. _____
 Company **RJ Enterprises**
 Well **Bailey - Krieter No. 1-1**
 Field **Centerville**
 County **Anderson** State **Kansas**
 Location **3490' FSL & 2344' FEL**
 SW-1/4-NW-36-NE

Sec. 27 Typ. 21s Rge. 21e
 Permanent Datum GL Elevation NA
 Log Measured From GL
 Drilling Measured From GL
 Other Services
 Perforate

Date	05-19-2012
Run Number	One
Depth Driller	572.0
Depth Logger	566.2
Bottom Logged Interval	564.2
Top Log Interval	20.0
Fluid Level	Full
Type Fluid	Water
Density / Viscosity	NA
Salinity - PPM Cl	NA
Max Recorded Temp	NA
Estimated Cement Top	0.0
Equipment No.	107
Location	Osawatomie
Recorded By	Steve Windisch
Witnessed By	Jason Kent

BORE-HOLE RECORD		CASING RECORD	
RUN No.	BIT	FRGM	TO
One	9.875"	0.0	20.0
Two	5.025"	20.0	572.0

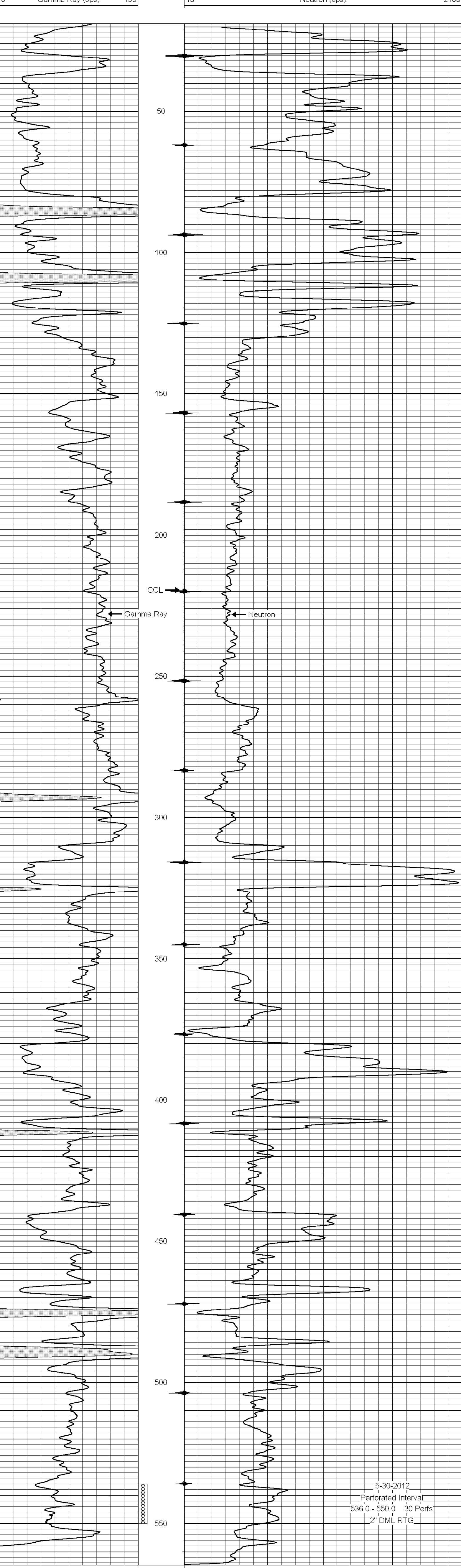
<<< Fold Here >>>

All interpretations are opinions based on inferences from electrical or other measurements and we cannot and do not guarantee the accuracy or correctness of any interpretation, and we shall not, except in the case of gross or willful negligence on our part, be liable or responsible for any loss, costs, damages, or expenses incurred or sustained by anyone resulting from any interpretation made by any of our officers, agents or employees. These interpretations are also subject to our general terms and conditions set out in our current Price Schedule.

Comments

Drilling Contractor :
RJ Enterprises

Database File: bailey1i.db
 Dataset Pathname: pass1
 Presentation Format: gr-n-ccl
 Dataset Creation: Sat May 19 12:10:49 2012 by Log SCH 111116
 Charted by: Depth in Feet scaled 1:240



5-30-2012
 Perforated Interval
 536.0 - 550.0 30 Perfs
 2" DML RTG