



**GAMMA RAY  
NEUTRON  
COMPLETION LOG**

Company: MIKE ELWELL  
Well: SNELL #28  
Field: PERU-SEDAN  
County: CHAUTAUQUA State: KANSAS

Location: 4180' RSL & 3240' FEI  
SW 3/4 SE NE NW  
SEC 9 TWP 34S RGE 11E  
Elevation: 904' EST  
Other Services: API #: 15-019-27047-00-00

Company: MIKE ELWELL  
Well: SNELL #28  
Field: PERU-SEDAN  
County: CHAUTAUQUA State: KANSAS

Location: 4180' RSL & 3240' FEI  
SW 3/4 SE NE NW  
SEC 9 TWP 34S RGE 11E  
Elevation: 904' EST  
Other Services: API #: 15-019-27047-00-00

Permanent Datum: GL  
Log Measured From: GL  
Drilling Measured From: GL  
Run Number: 11WV  
Date: 8-5-11  
Depth: 1247'  
Depth Interval: 0'  
Top Log Interval: FULL  
Bottom Logged Interval: FULL  
Fluid Level: WATER

Production Casing: 2 7/8" @ TD  
Max. Recorded Temp:  
Estimated Cement Top:  
Amount & Type Cement:  
Drilling Contractor:  
Equipment Number: 109  
Location: SAMBORN, S  
Witnessed By: ELWELL, M.

Calculated Cement Top:  
Amount & Type Cement:  
Drilling Contractor:  
Equipment Number: 109  
Location: SAMBORN, S  
Witnessed By: ELWELL, M.

Calculated Cement Top:  
Amount & Type Cement:  
Drilling Contractor:  
Equipment Number: 109  
Location: SAMBORN, S  
Witnessed By: ELWELL, M.

Calculated Cement Top:  
Amount & Type Cement:  
Drilling Contractor:  
Equipment Number: 109  
Location: SAMBORN, S  
Witnessed By: ELWELL, M.

Calculated Cement Top:  
Amount & Type Cement:  
Drilling Contractor:  
Equipment Number: 109  
Location: SAMBORN, S  
Witnessed By: ELWELL, M.

<<< Fold Here >>>

All interpretations are opinions based on inferences from electrical or other measurements and we cannot and do not guarantee the accuracy or correctness of any interpretation, and we shall not, except in the case of gross or willful negligence on our part, be liable or responsible for any loss, costs, damages, or expenses incurred or sustained by anyone resulting from any interpretation made by any of our officers, agents or employees. These interpretations are also subject to our general terms and conditions set out in our current Price Schedule.

Comments

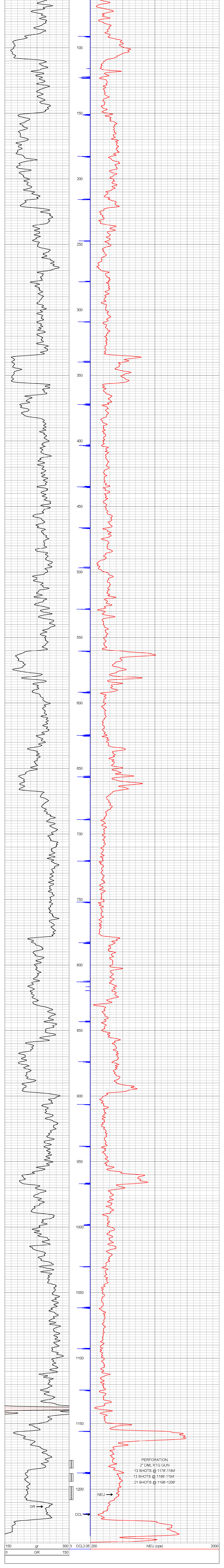
THANK YOU

Sensor	Offset (ft)	Schematic	Description	Len (ft)	OD (in)	Wt (lb)
GR	7.59		GR-TITAN_169 (TIT169_001) Titan 1 11/16" Gamma Ray	4.75	1.69	20.00
CCL	5.05		CCL-TITAN_169 (TIT169) Titan 1 11/16" Logging CCL	1.83	1.69	7.50
NEU	0.63		NEU-TITAN (TIT801) TITAN 1 11/16" Neutron	4.33	1.69	25.00

Dataset: snell #28 db: field/well/run1/pass1  
Total Length: 10.92 ft  
Total Weight: 52.50 lb  
O.D.: 1.69 in

Database File: g:\snell #28 db  
Dataset Pathname: pass1  
Presentation Format: gr-h-col  
Dataset Creation: Fri Aug 05 11:09:17 2011 by Log Std Casedhole 09061  
Charted by: Depth in Feet scaled 1.240

150	gr	300	3	CCL0.05	200	NEU (cps)	2000
0	GR	150					



150	gr	300	3	CCL0.05	200	NEU (cps)	2000
0	GR	150					