

LOG-TECH



DIGITAL LOG (785) 625-3858

Microresistivity Log

API No. 15-009-25,686-00-00

Company **Reif Oil & Gas Co. LLC.**
 Well **Haines 'A' #1**
 Field **Wildcat**
 County **Barton** State **Kansas**

Location **SW SE NW SE
1508' FSL & 1796' FEL**

Sec: **19** Twp: **16 S** Rge: **14 W**

Other Services
 CNL/CDL
 DIL/BHCS

Permanent Datum **Ground Level** Elevation **1930**
 Log Measured From **Kelly Bushing** 8 Ft. Above Perm. Datum
 Drilling Measured From **Kelly Bushing**

Elevation
 K.B. 1938
 D.F. 1930
 G.L. 1930

Date	5/23/2012	
Run Number	Two	
Depth Driller	3515	
Depth Logger	3516	
Bottom Logged Interval	3515	
Top Log Interval	2800	
Casing Driller	8.625 @ 939	
Casing Logger	936	
Bit Size	7.875	
Type Fluid in Hole	Chemical	
Salinity, ppm CL	7.200	
Density / Viscosity	9.2	49
pH / Fluid Loss	8.5	11.2
Source of Sample	Flowline	
Rm @ Meas. Temp	.73 @ 80	
Rmf @ Meas. Temp	.55 @ 80	
Rmc @ Meas. Temp	.99 @ 80	
Source of Rmf / Rmc	Charts	
Rm @ BHT	.52 @ 113	
Operating Rig Time	5 Hours	
Max Rec. Temp. F	113	
Equipment Number	91	
Location	Hays	
Recorded By	K. Bange	
Witnessed By	Jim Musgrave	

<<< Fold Here >>>

All interpretations are opinions based on inferences from electrical or other measurements and we cannot and do not guarantee the accuracy or correctness of any interpretation, and we shall not, except in the case of gross or willful negligence on our part, be liable or responsible for any loss, costs, damages, or expenses incurred or sustained by anyone resulting from any interpretation made by any of our officers, agents or employees. These interpretations are also subject to our general terms and conditions set out in our current Price Schedule.

Comments

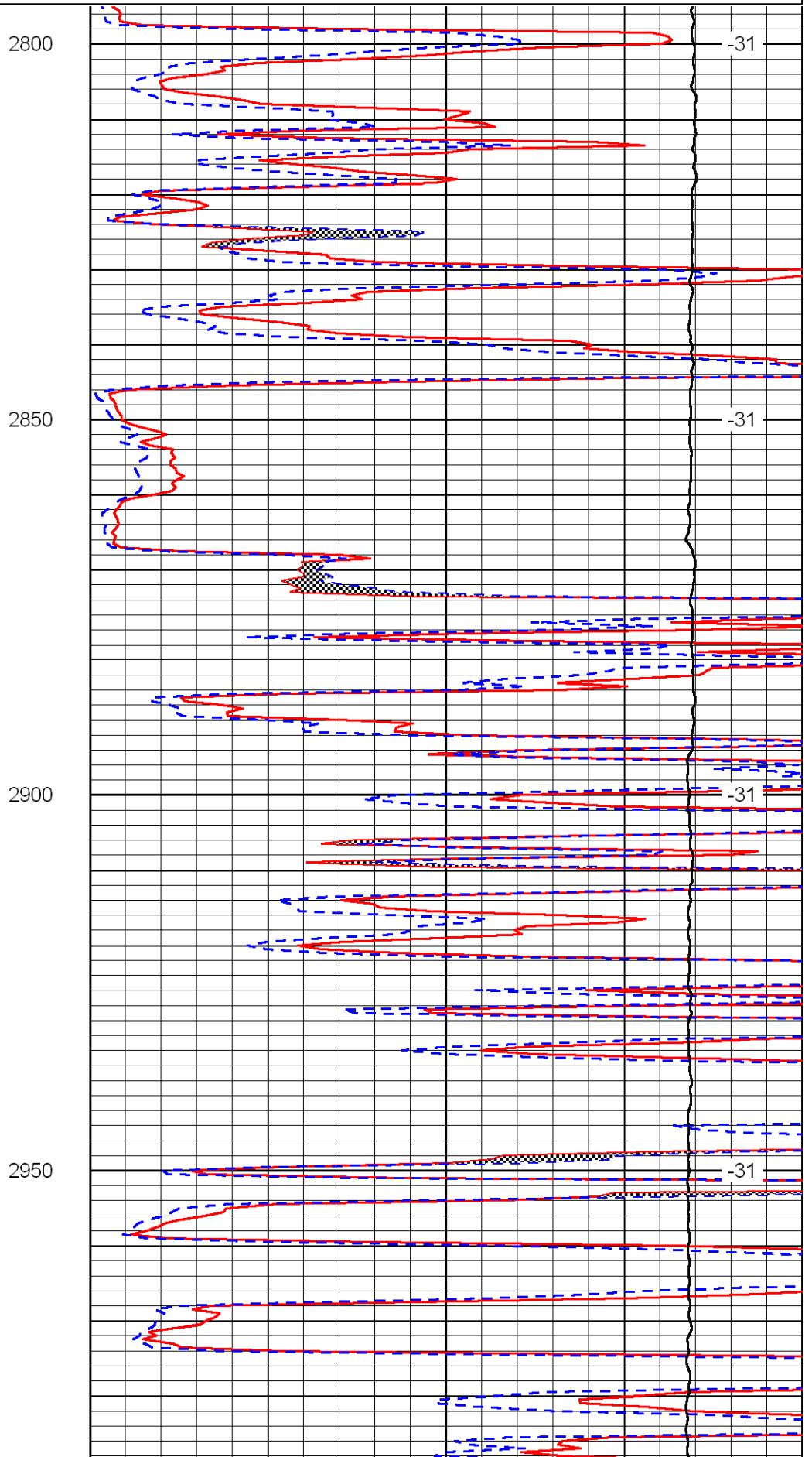
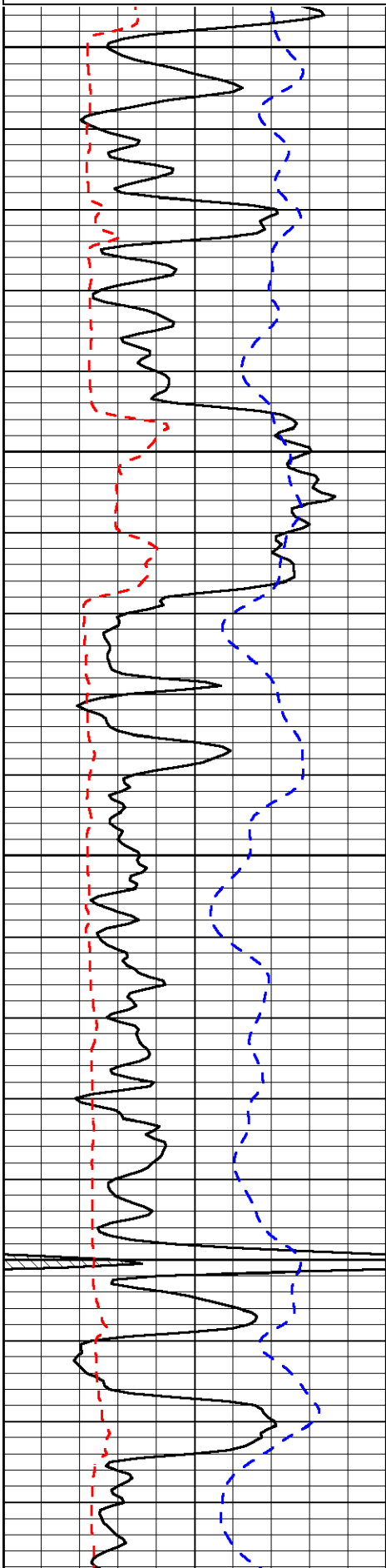
Thank you for using Log-Tech, Inc.
 (785) 625-3858

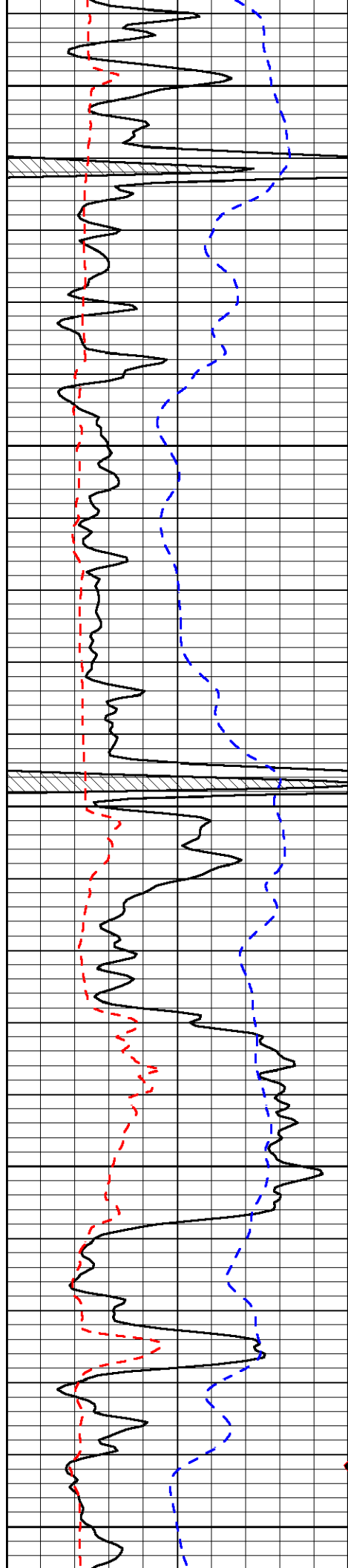
Galatia, 2 1/2 E, N into

Database File: reif052312hd.db
 Dataset Pathname: dil/reifstack
 Presentation Format: micro
 Dataset Creation: Wed May 23 16:52:19 2012
 Charted by: Depth in Feet scaled 1:240

0	Gamma Ray	150
6	MCAL (GAPI)	16
2.875	Mud Cake (GAPI)	7.875
-200	SP	0

0	Micro Inverse 1 X 1	40
0	Micro Normal 2"	40
10000	Line Weight	0
		LSPD





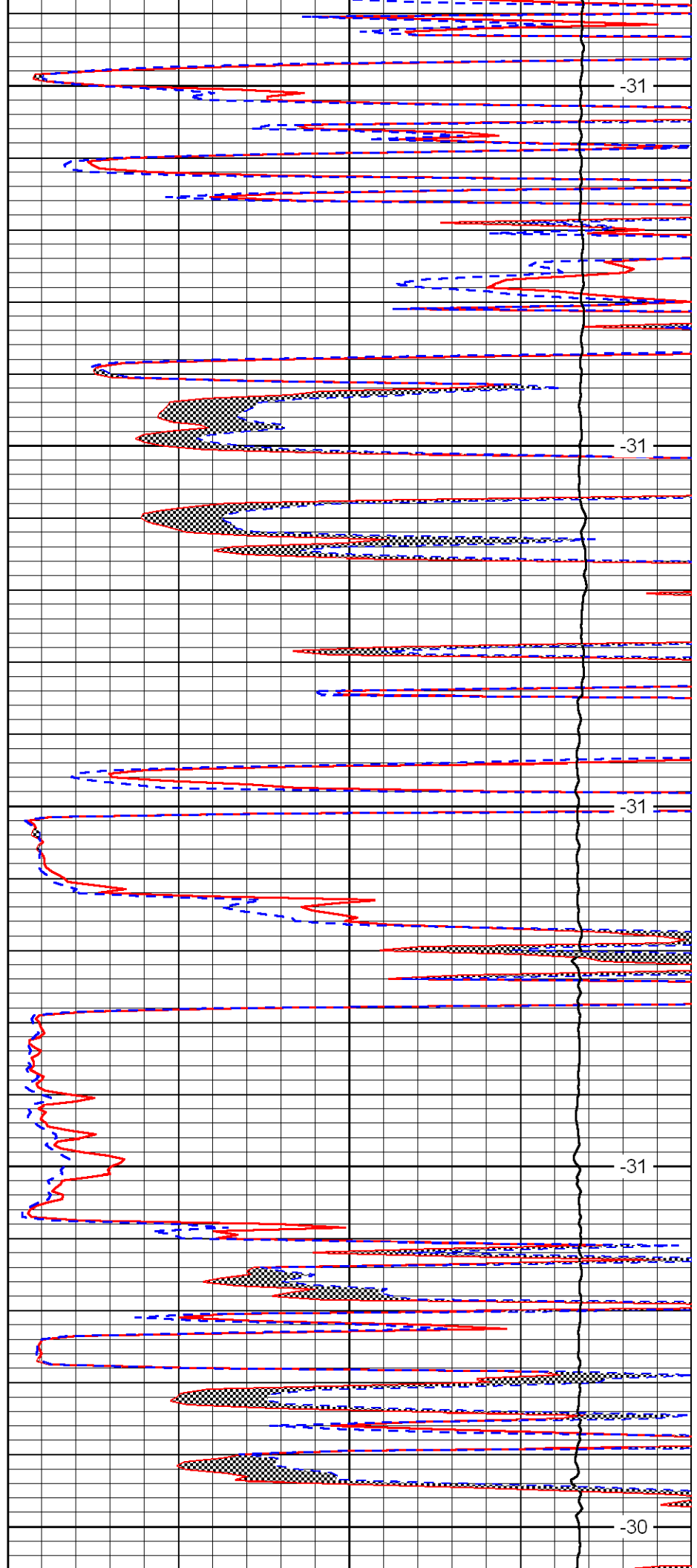
3000

3050

3100

3150

3200



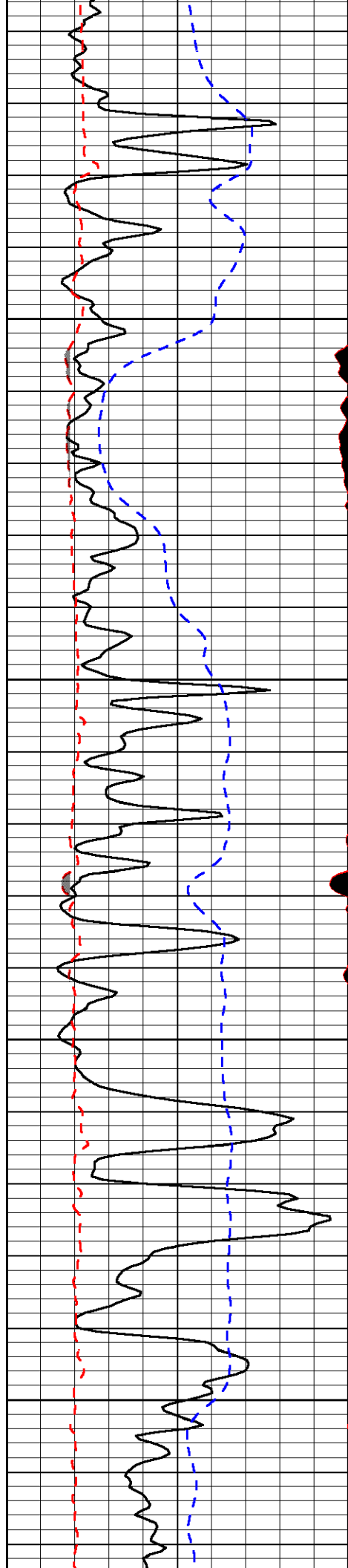
-31

-31

-31

-31

-30

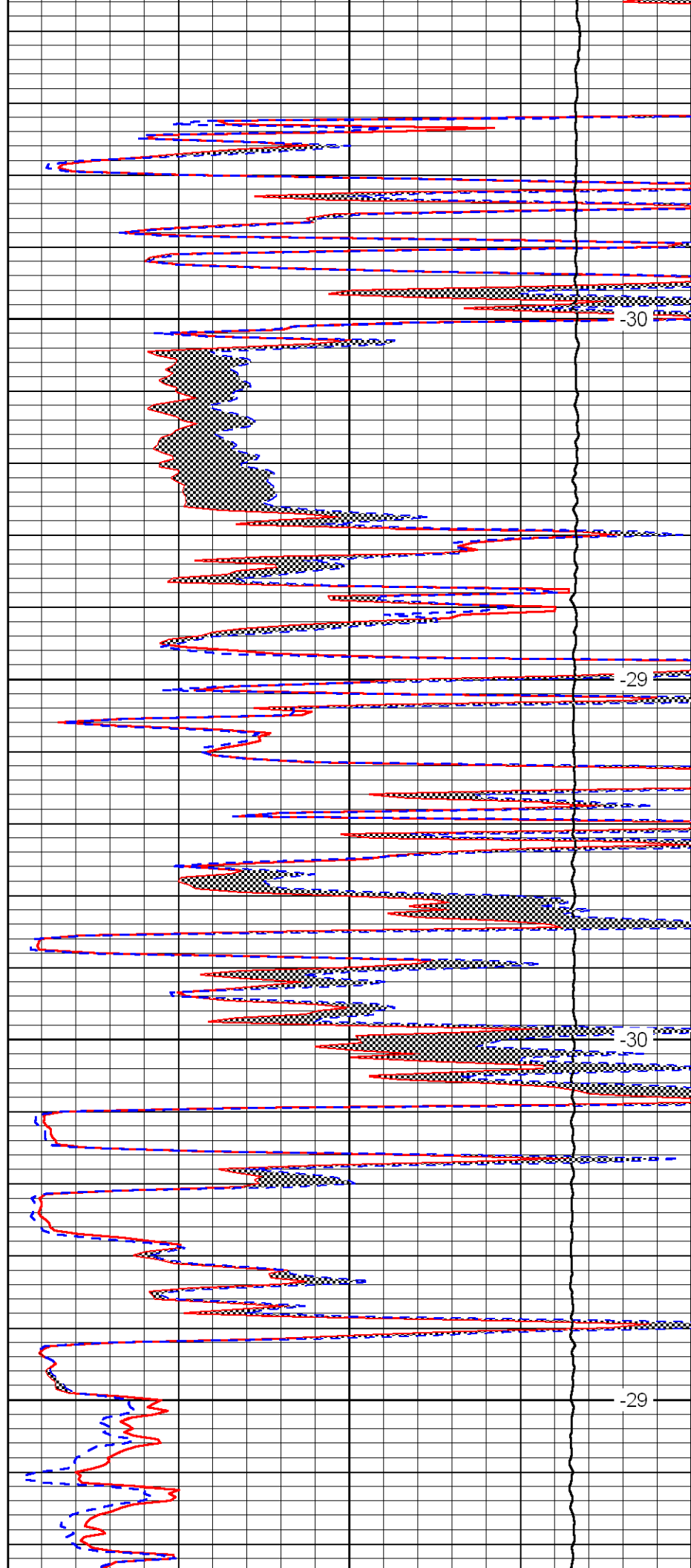


3250

3300

3350

3400

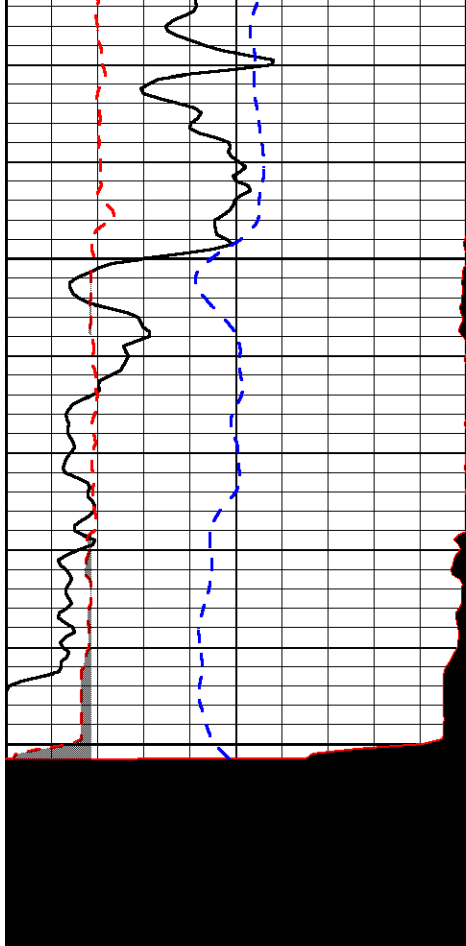


-30

-29

-30

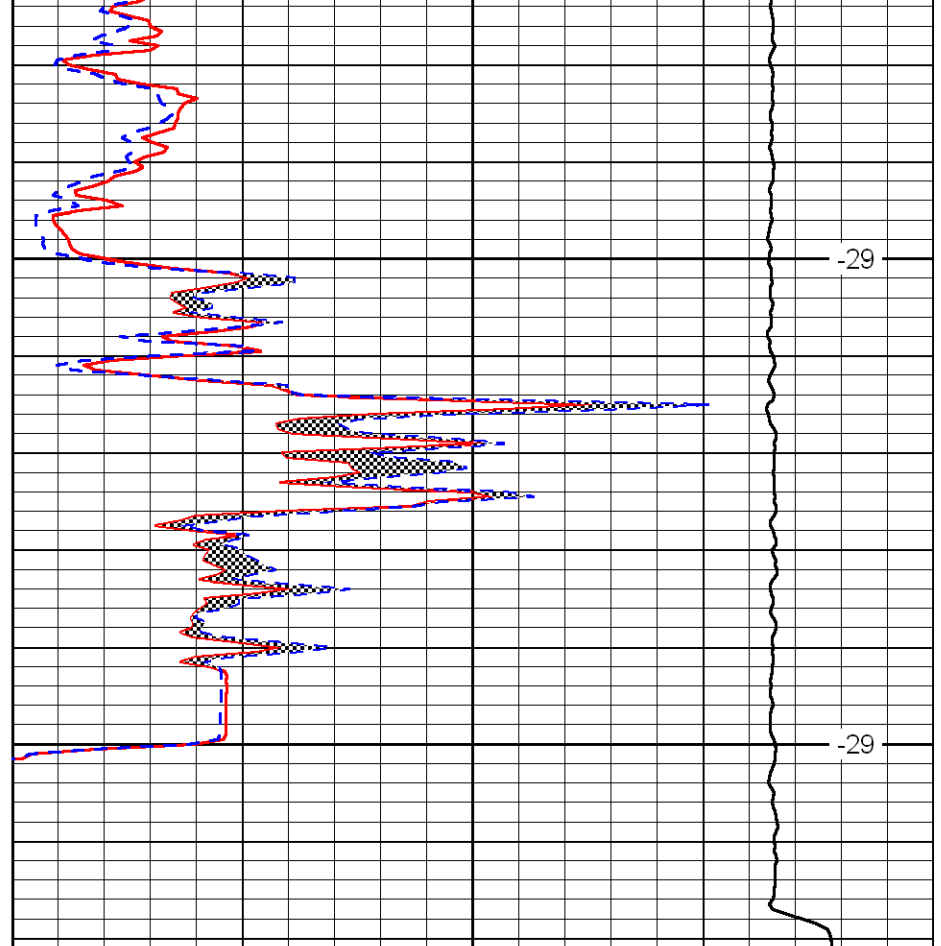
-29



0	Gamma Ray	150
6	MCAL (GAPI)	16
2.875	Mud Cake (GAPI)	7.875
-200	SP	0

3450

3500



0	Micro Inverse 1 X 1	40
0	Micro Normal 2''	40
10000	Line Weight	0

-29

-29

LSPD