



DIGITAL LOG (785) 625-3858

Dual Compensated Porosity Log

API No. 15-009-25,686-00-00

Company **Reif Oil & Gas Co. LLC.**  
 Well **Haines 'A' #1**  
 Field **Wildcat**  
 County **Barton** State **Kansas**

Location **SW SE NW SE  
1508' FSL & 1796' FEL**

Sec: **19** Twp: **16 S** Rge: **14 W**

Other Services  
DIL  
MEL/BHCS

Permanent Datum **Ground Level** Elevation **1930**  
 Log Measured From **Kelly Bushing** 8 Ft. Above Perm. Datum  
 Drilling Measured From **Kelly Bushing**

K.B. 1938  
 D.F. 1930  
 G.L. 1930

Date **5/23/2012**

Run Number **One**

Type Log **CNL / CDL**

Depth Driller **3515**

Depth Logger **3516**

Bottom Logged Interval **3495**

Top Logged Interval **2800**

Type Fluid In Hole **Chemical**

Salinity, PPM CL **7,200**

Density **9.2**

Level **Full**

Max. Rec. Temp. F **113**

Operating Rig Time **5 Hours**

Equipment -- Location **91 Hays**

Recorded By **K. Bange**

Witnessed By **Jim Musgrove**

Borehole Record				Casing Record			
Run No	Bit	From	To	Size	Wgt.	From	To
One	12.25	00	939	8.625	23#	00	939
Two	7.875	939	TD				

<<< Fold Here >>>

All interpretations are opinions based on inferences from electrical or other measurements and we cannot and do not guarantee the accuracy or correctness of any interpretation, and we shall not, except in the case of gross or willful negligence on our part, be liable or responsible for any loss, costs, damages, or expenses incurred or sustained by anyone resulting from any interpretation made by any of our officers, agents or employees. These interpretations are also subject to our general terms and conditions set out in our current Price Schedule.

Comments

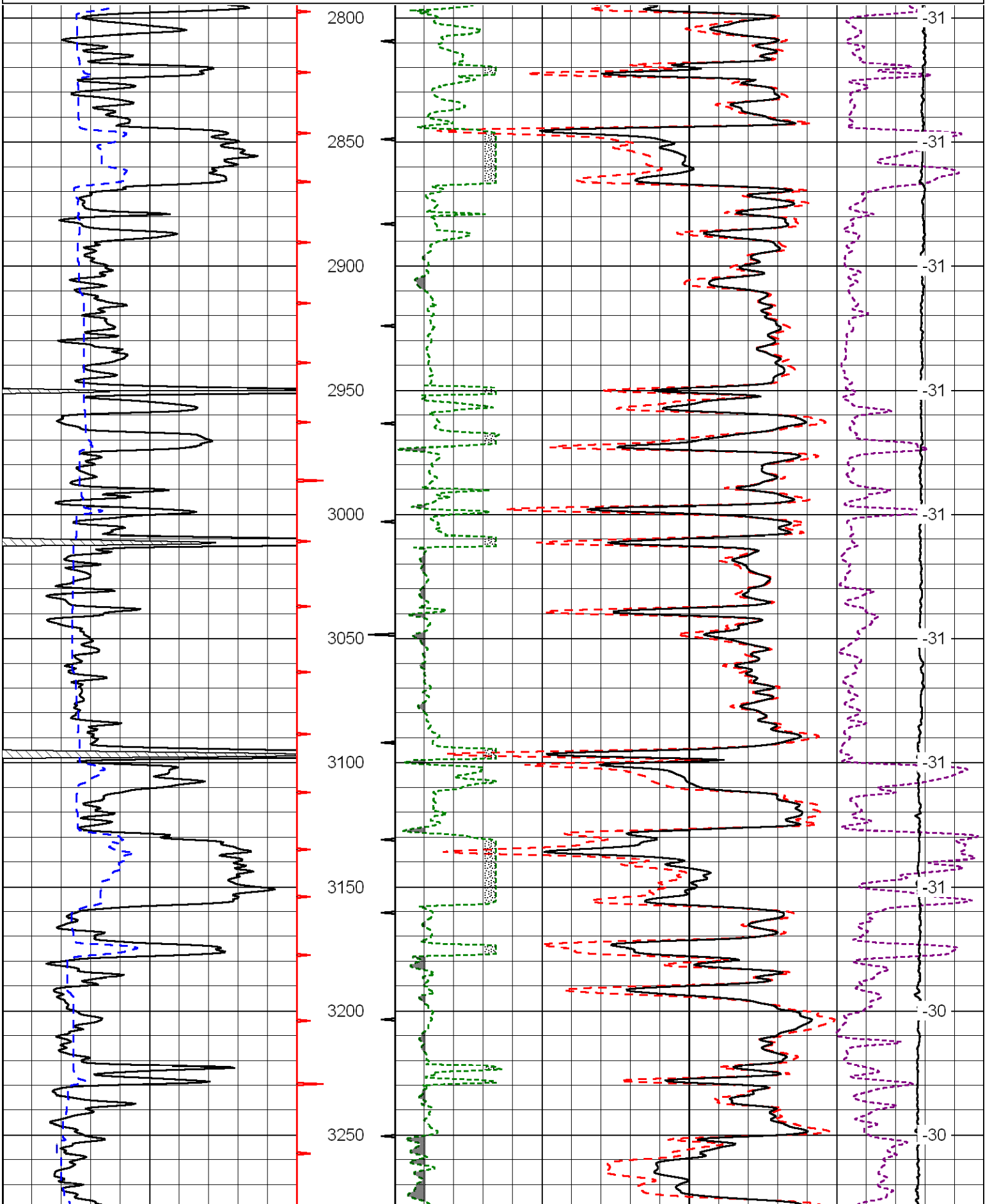
Thank you for using Log-Tech, Inc.  
(785) 625-3858

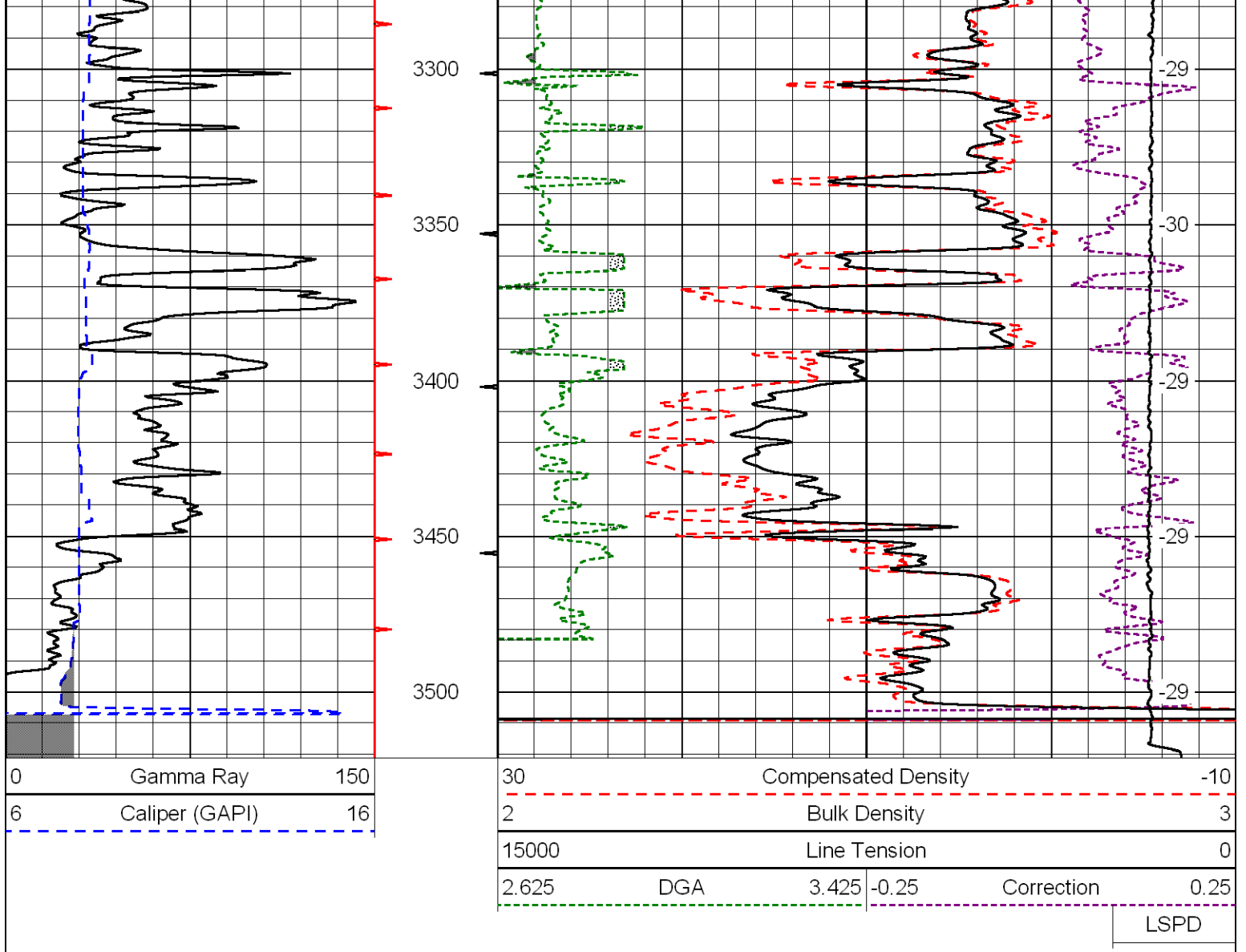
Galatia, 2 1/2 E, N into

Database File: reif052312hd.db  
 Dataset Pathname: dil/reifstack  
 Presentation Format: cdl  
 Dataset Creation: Wed May 23 16:52:19 2012  
 Charted by: Depth in Feet scaled 1:600

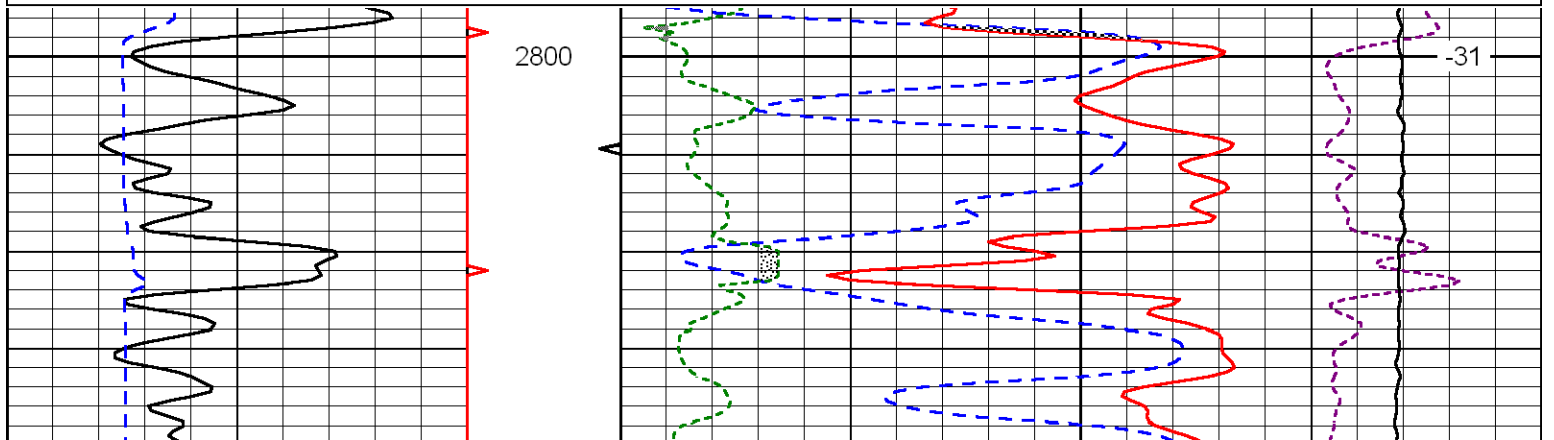
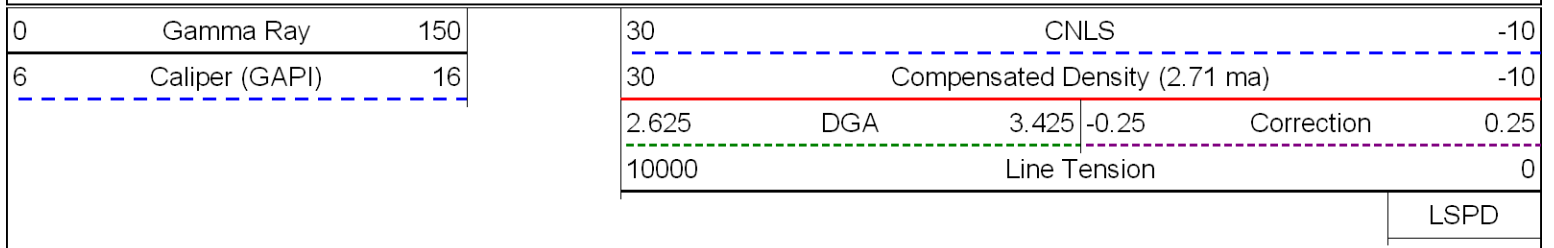
0	Gamma Ray	150
6	Caliper (GAPI)	16

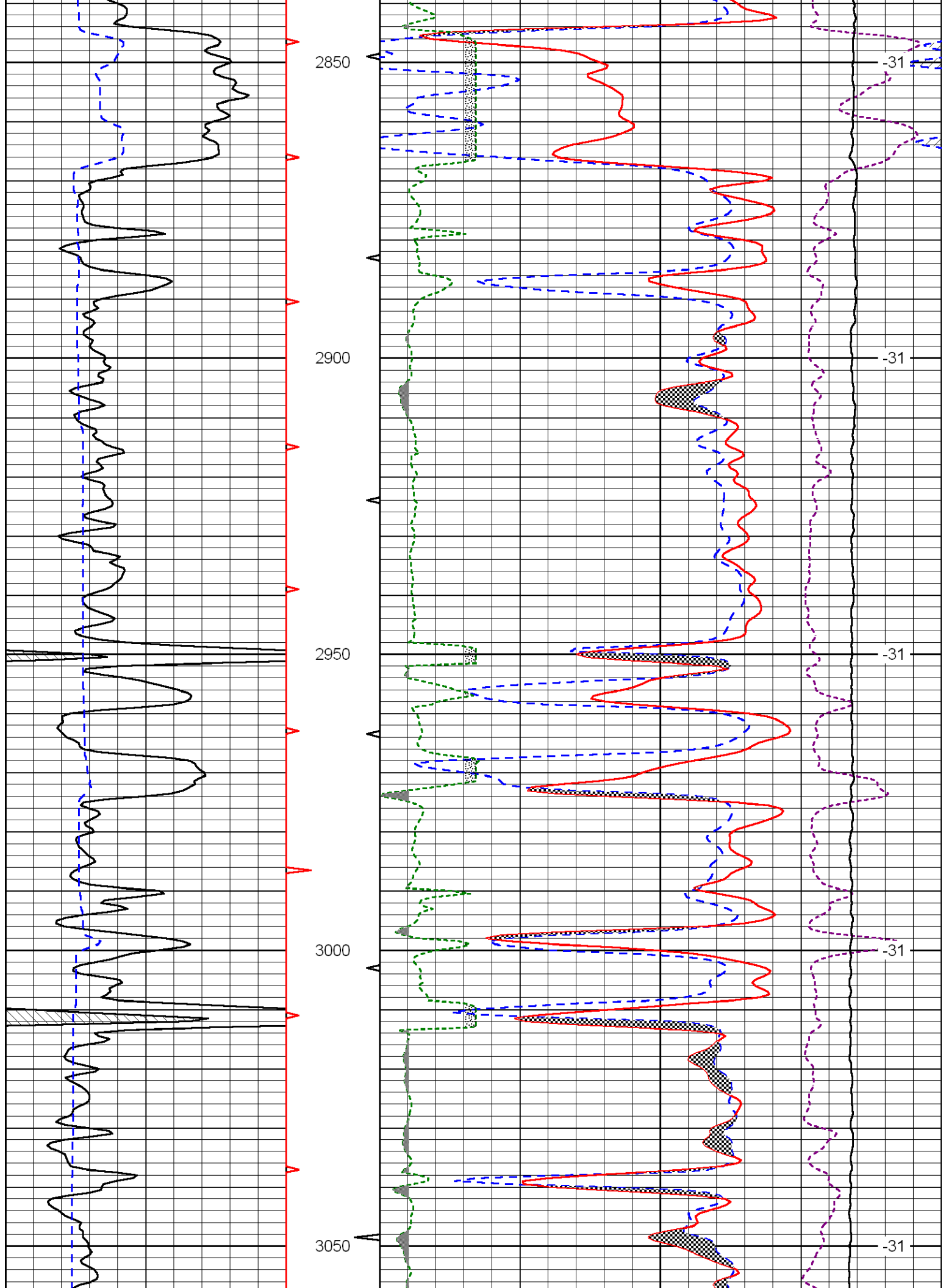
30	Compensated Density		-10
2	Bulk Density		3
15000	Line Tension		0
2.625	DGA	3.425	-0.25
Correction			0.25
LSPD			

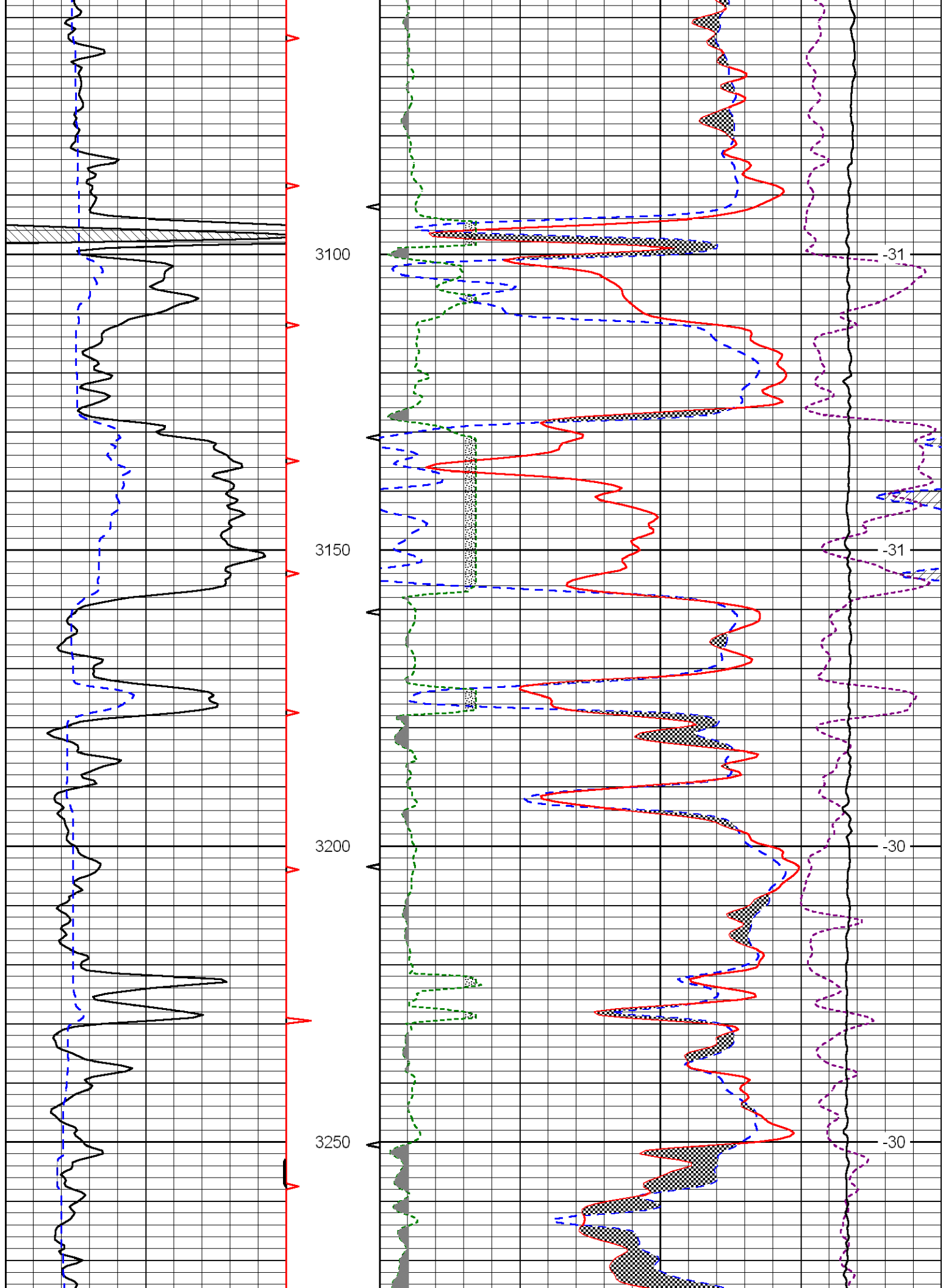


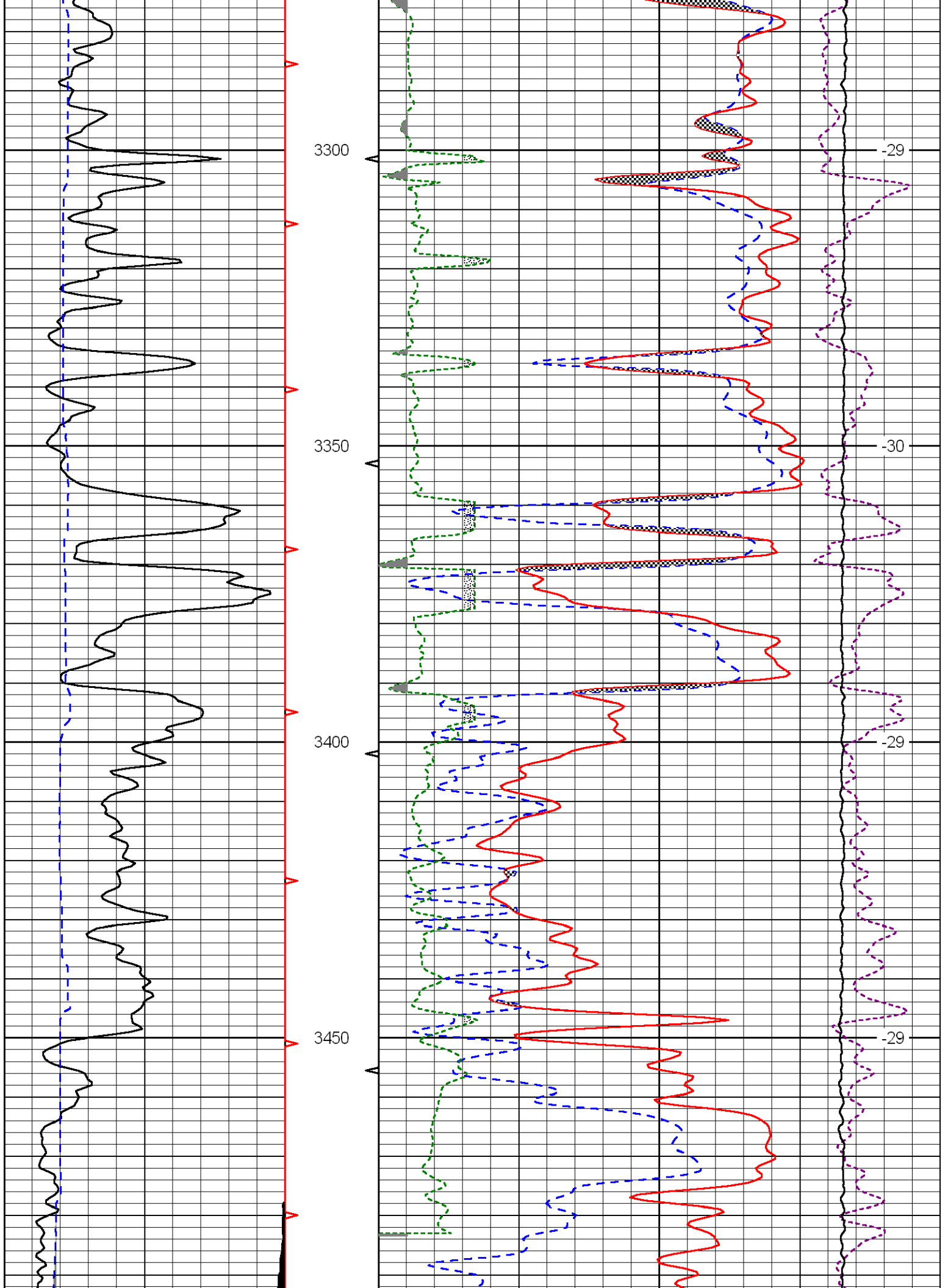


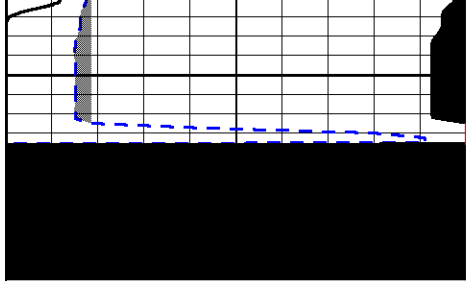
Database File: reif052312hd.db  
 Dataset Pathname: dil/reifstack  
 Presentation Format: ondspec  
 Dataset Creation: Wed May 23 16:52:19 2012  
 Charted by: Depth in Feet scaled 1:240



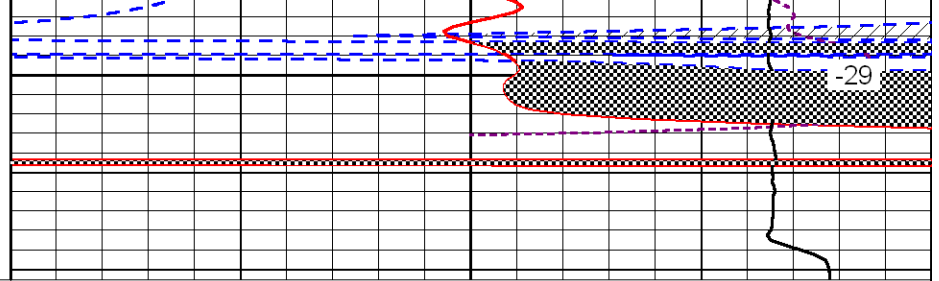








3500



0	Gamma Ray	150
---	-----------	-----

6	Caliper (GAPI)	16
---	----------------	----

30	CNLS	-10
----	------	-----

30	Compensated Density (2.71 ma)	-10
----	-------------------------------	-----

2.625	DGA	3.425	-0.25	Correction	0.25
-------	-----	-------	-------	------------	------

10000	Line Tension	0
-------	--------------	---

LSPD
------