



DIGITAL LOG (785) 625-3858

Dual Induction Log

API No.	15-009-25,686-00-00	
Company	Reif Oil & Gas Co. LLC.	
Well	Haines 'A' #1	
Field	Wildcat	
County	Barton	State Kansas
Location	SW SE NW SE 1508' FSL & 1796' FEL	
Sec: 19	Twp: 16 S	Rge: 14 W
Permanent Datum	Ground Level	Elevation 1930
Log Measured From	Kelly Bushing	8 Ft. Above Perm. Datum
Drilling Measured From	Kelly Bushing	K.B. 1938 D.F. 1930 G.L. 1930
Other Services	CNL/CDL MEL/BHCS	

Date	5/23/2012	
Run Number	One	
Depth Driller	3515	
Depth Logger	3516	
Bottom Logged Interval	3515	
Top Log Interval	900	
Casing Driller	8.625 @ 939	
Casing Logger	936	
Bit Size	7.875	
Type Fluid in Hole	Chemical	
Salinity, ppm CL	7.200	
Density / Viscosity	9.2	49
pH / Fluid Loss	8.5	11.2
Source of Sample	Flowline	
Rm @ Meas. Temp	.73 @	80
Rmf @ Meas. Temp	.55 @	80
Rmc @ Meas. Temp	.99 @	80
Source of Rmf / Rmc	Charts	
Rm @ BHT	.52 @	113
Operating Rig Time	5 Hours	
Max Rec. Temp. F	113	
Equipment Number	91	
Location	Hays	
Recorded By	K. Bange	
Witnessed By	Jim Musgrove	

<<< Fold Here >>>

All interpretations are opinions based on inferences from electrical or other measurements and we cannot and do not guarantee the accuracy or correctness of any interpretation, and we shall not, except in the case of gross or willful negligence on our part, be liable or responsible for any loss, costs, damages, or expenses incurred or sustained by anyone resulting from any interpretation made by any of our officers, agents or employees. These interpretations are also subject to our general terms and conditions set out in our current Price Schedule.

Comments

Thank you for using Log-Tech, Inc.
(785) 625-3858

Galatia, 2 1/2 E, N into

Database File: reif052312hd.db
 Dataset Pathname: dil/reifstack
 Presentation Format: dil2in
 Dataset Creation: Wed May 23 16:52:19 2012
 Charted by: Depth in Feet scaled 1:600

0 Gamma Ray 150
-200 SP 0

0 Shallow Resistivity 50
0 Deep Resistivity 50

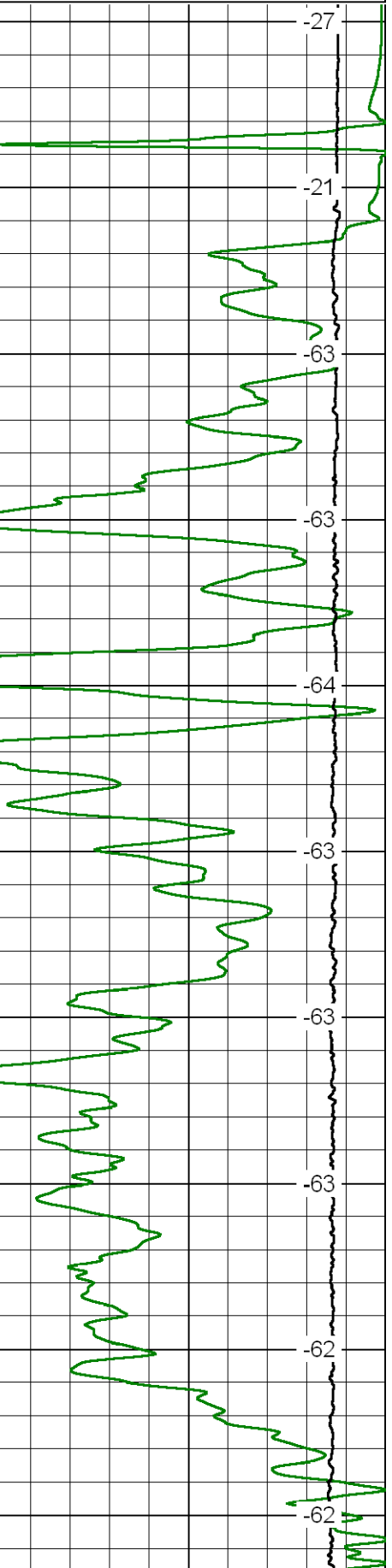
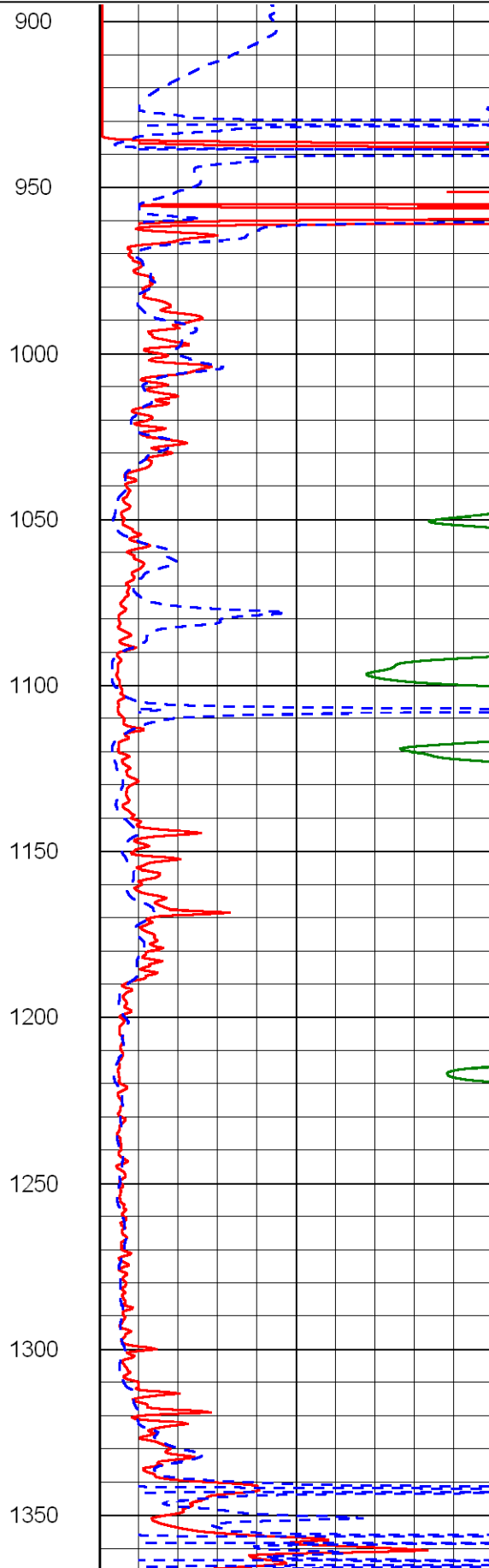
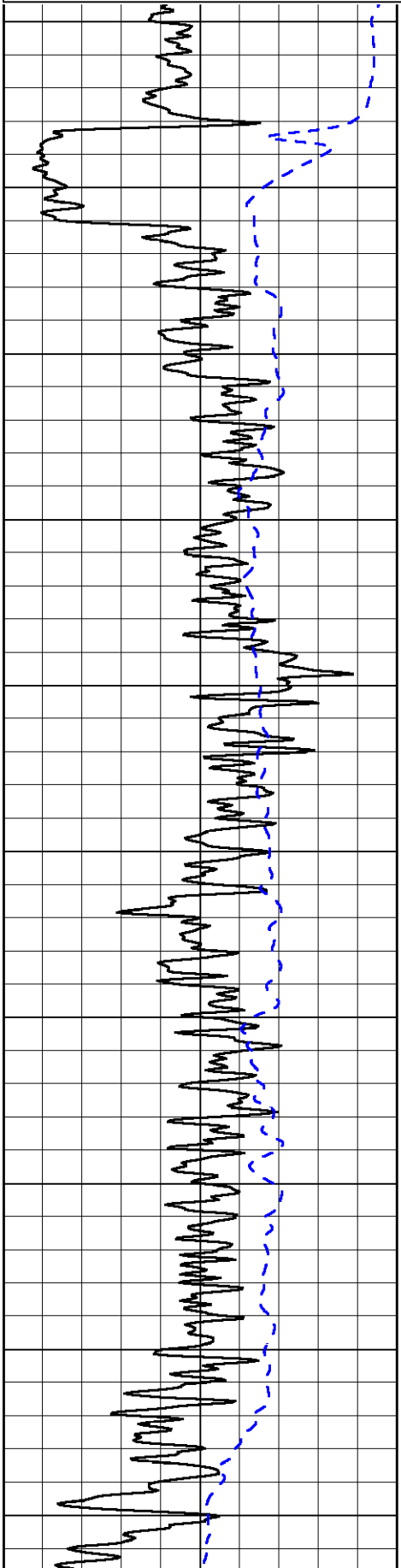
LSPD

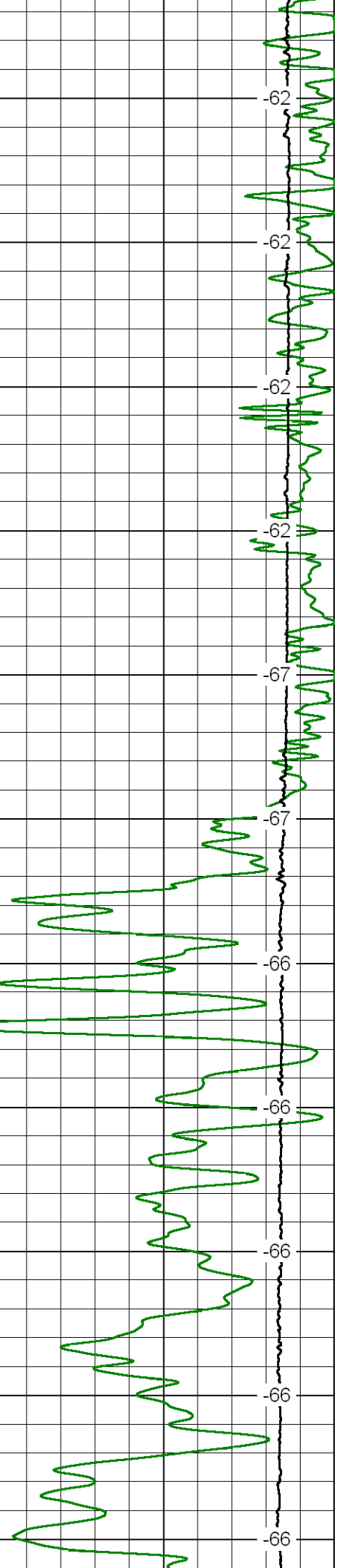
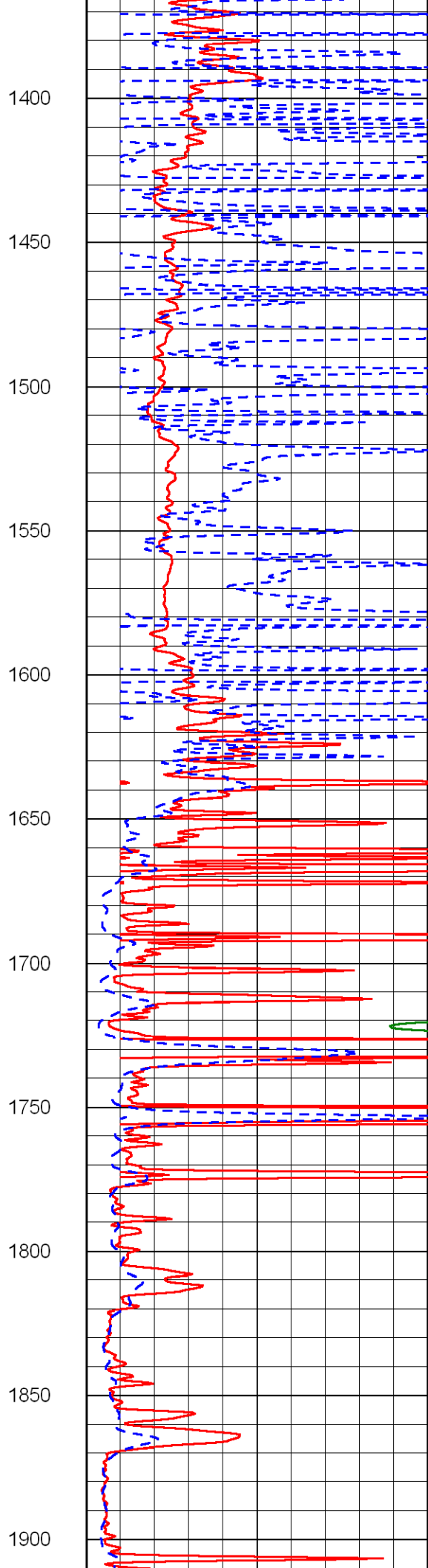
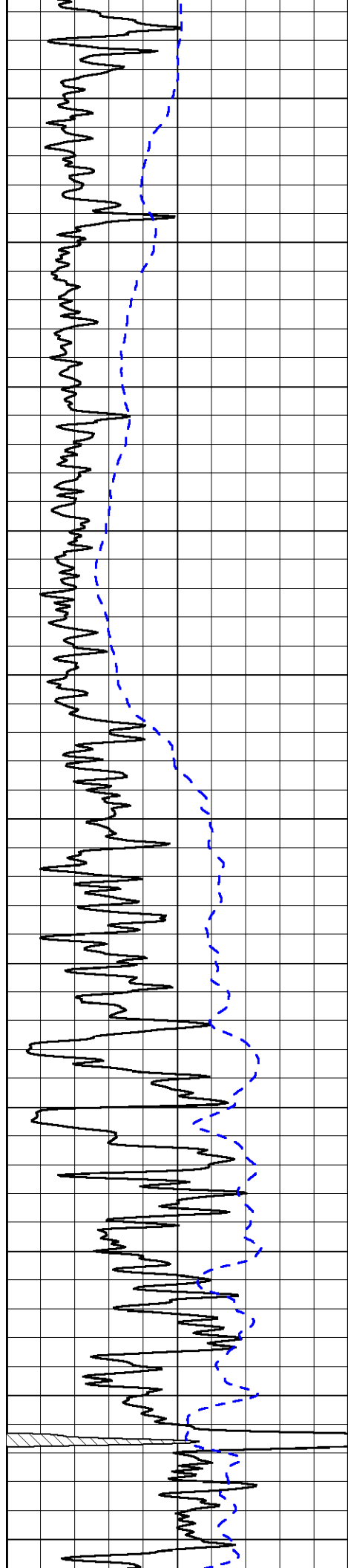
1000 Conductivity 0

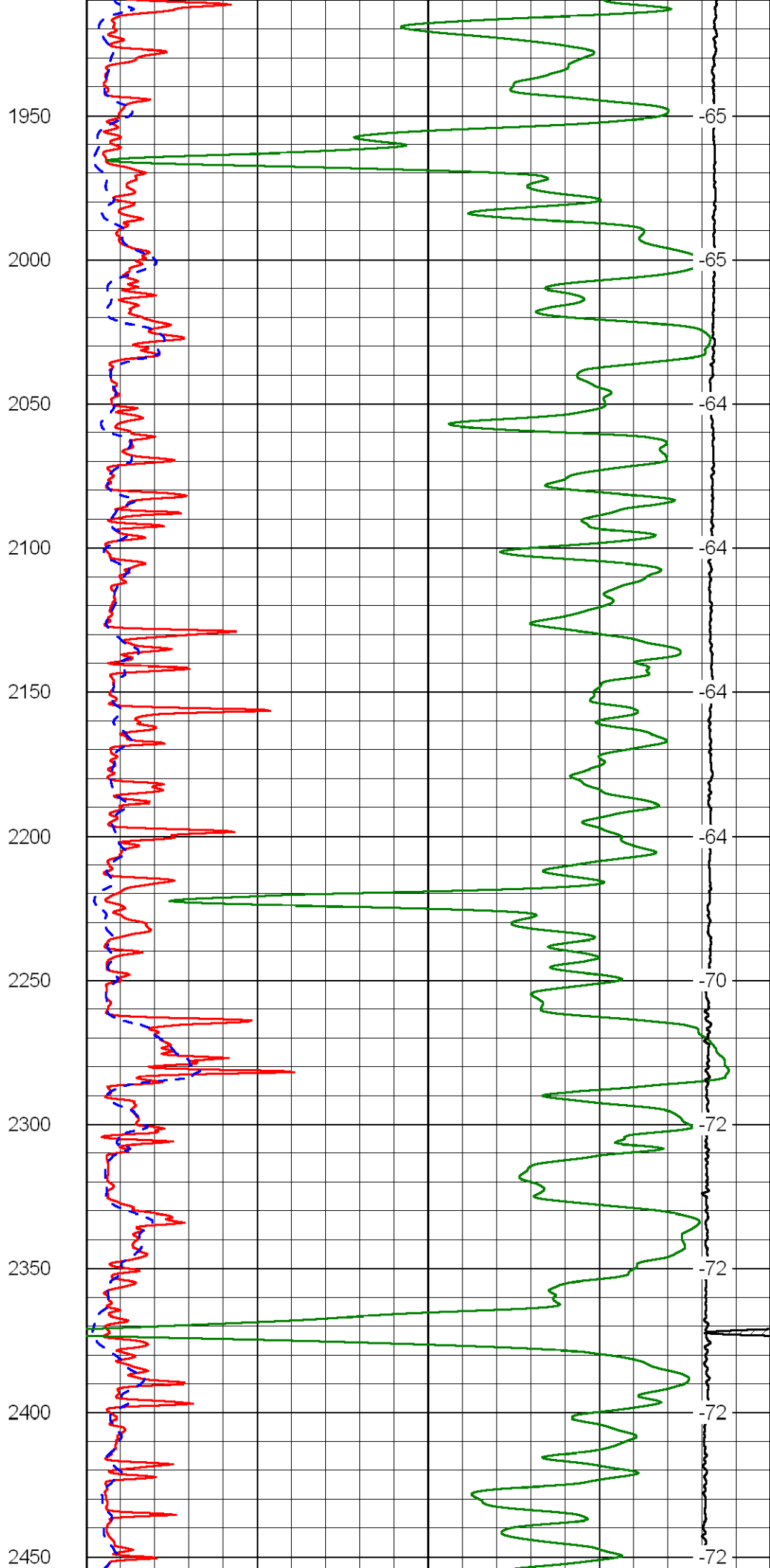
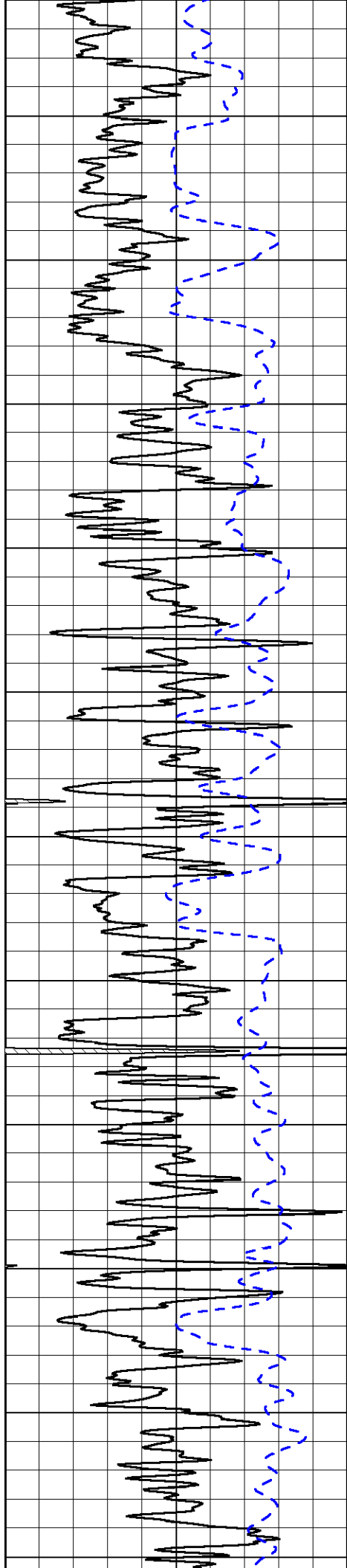
15000 Line Tension 0

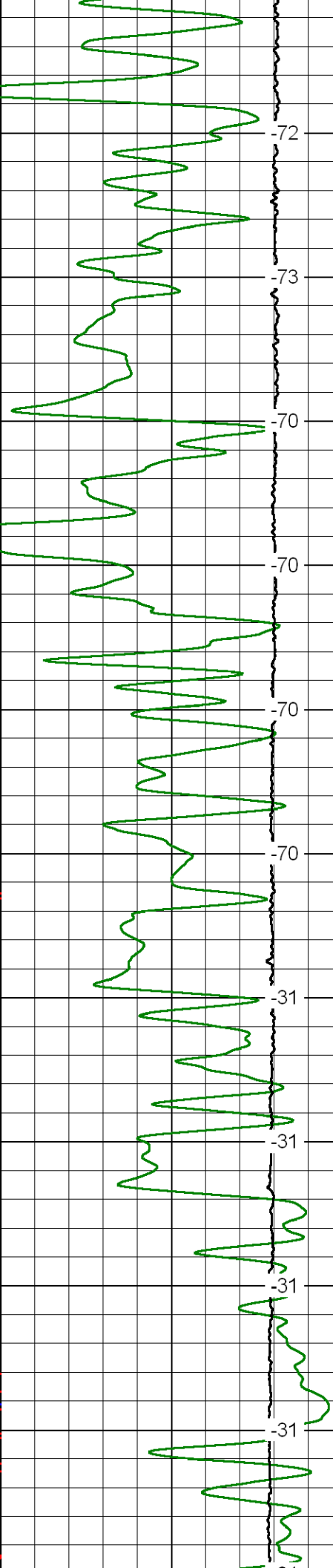
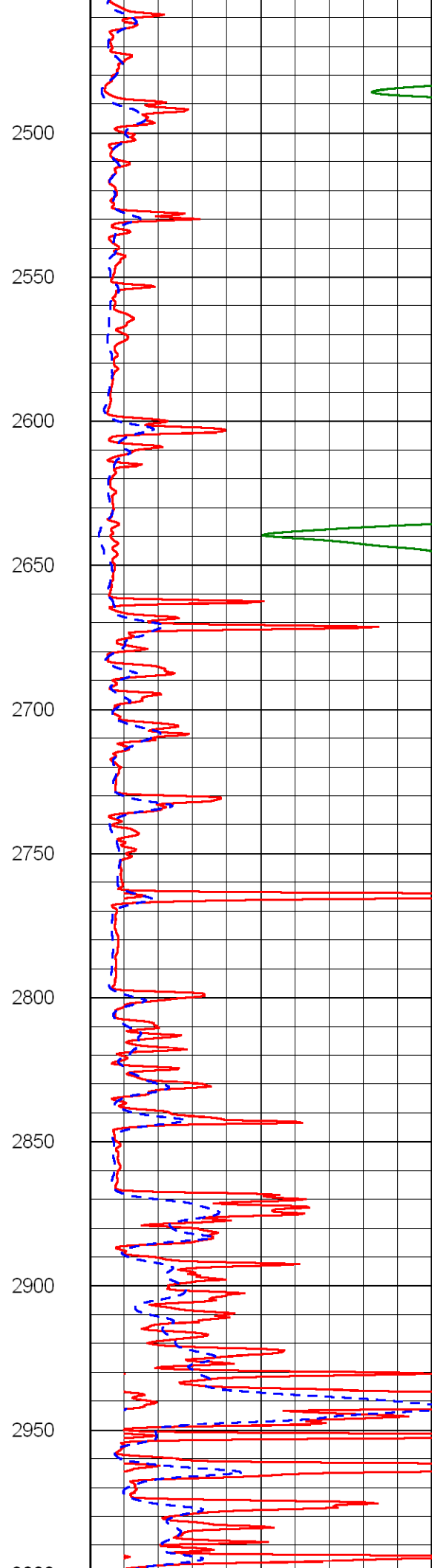
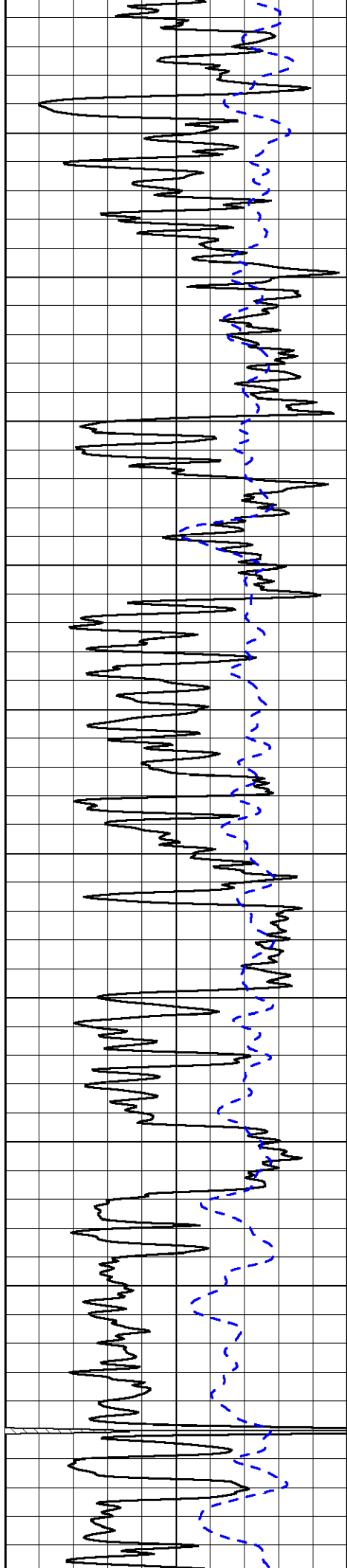
50 Shallow Resistivity 500

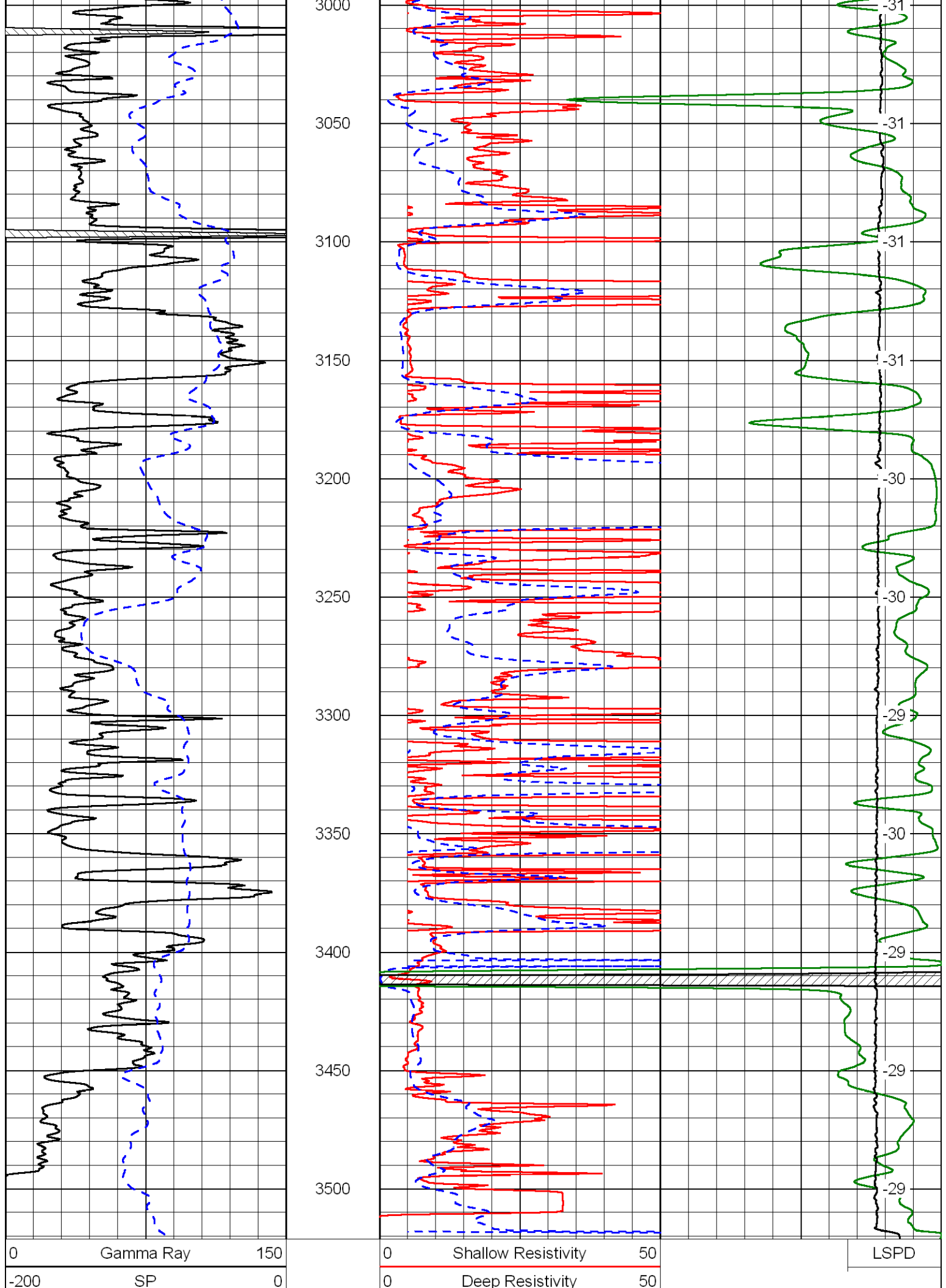
50 Deep Resistivity 500











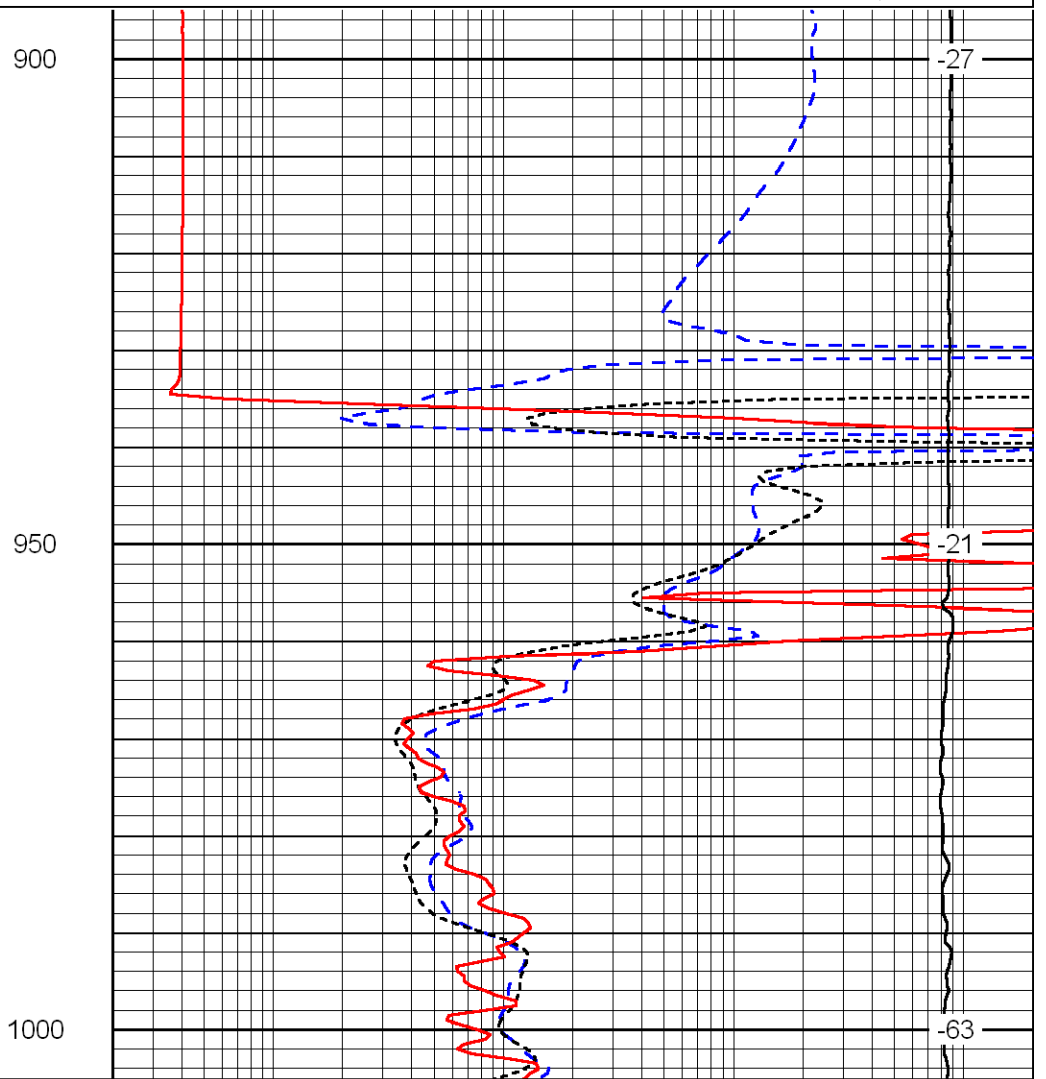
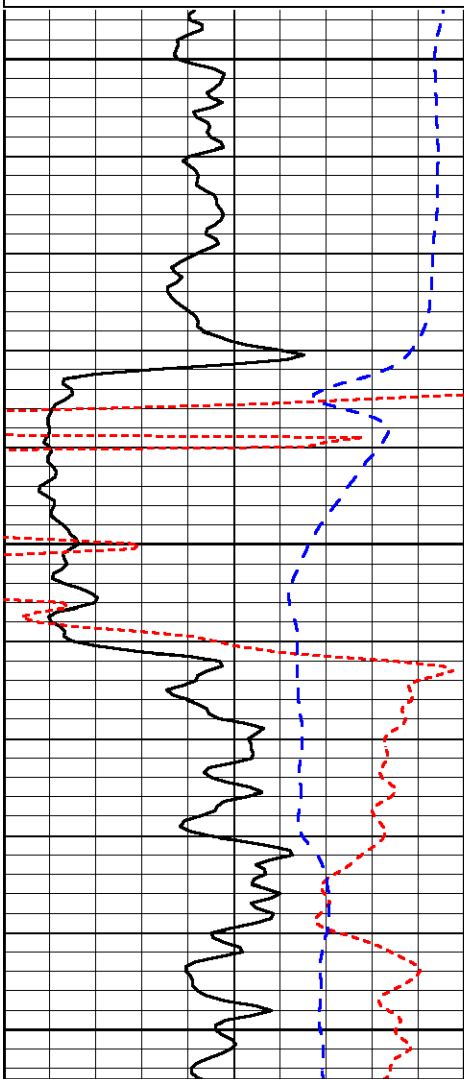
1000	Conductivity	0
15000	Line Tension	0
50	Shallow Resistivity	500
50	Deep Resistivity	500

Database File: reif052312hd.db
 Dataset Pathname: dil/reifstack
 Presentation Format: dil
 Dataset Creation: Wed May 23 16:52:19 2012
 Charted by: Depth in Feet scaled 1:240

0	Gamma Ray	150
-160	RXO/RT	40
-200	SP	0

0.2	Deep Resistivity	2000
0.2	Medium Resistivity	2000
0.2	Shallow Resistivity	2000
10000	Line Tension	0

LSPD



0	Gamma Ray	150
-160	RXO/RT	40
-200	SP	0

0.2	Deep Resistivity	2000
0.2	Medium Resistivity	2000
0.2	Shallow Resistivity	2000
10000	Line Tension	0

LSPD

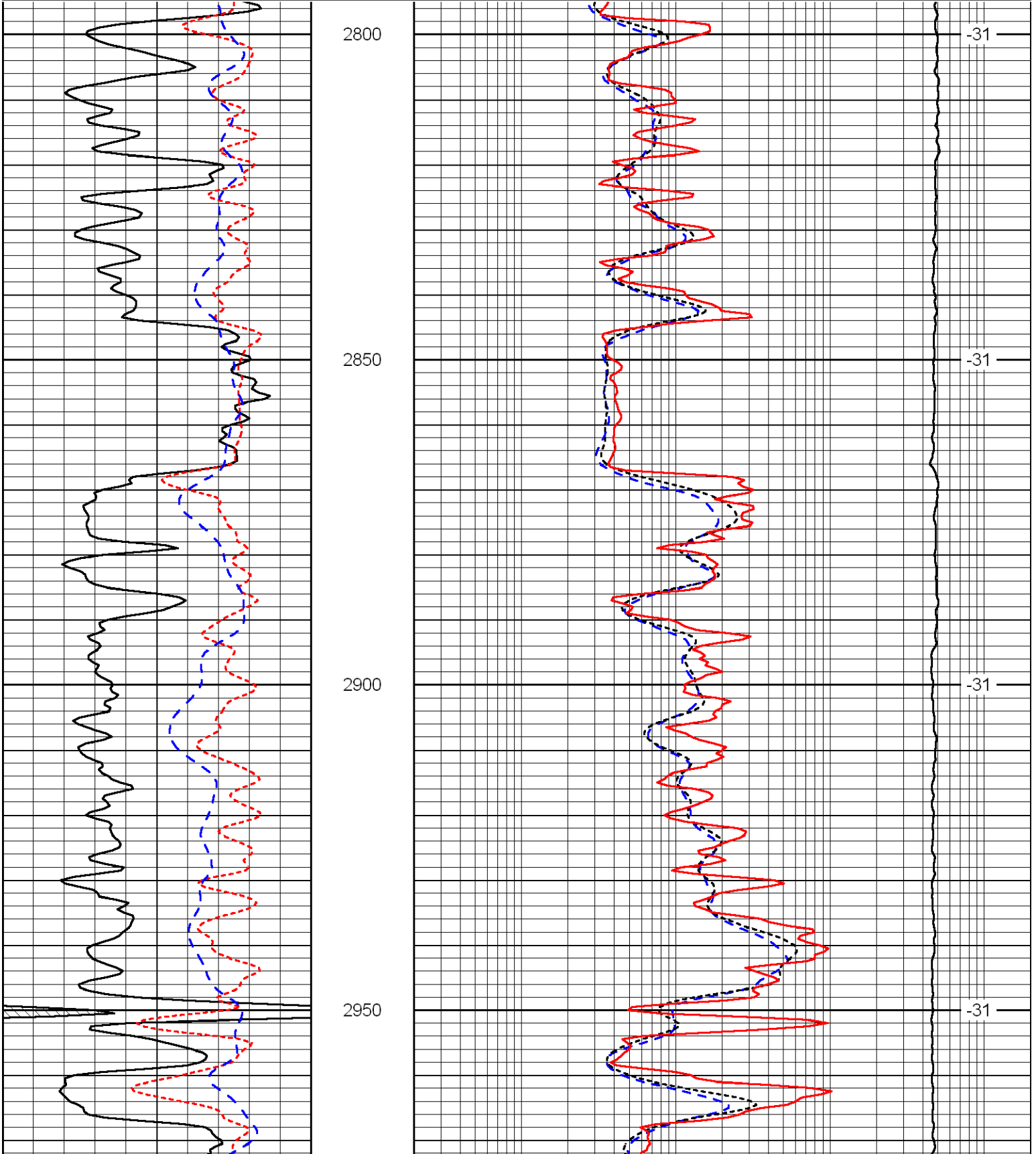
Database File: reif052312hd.db

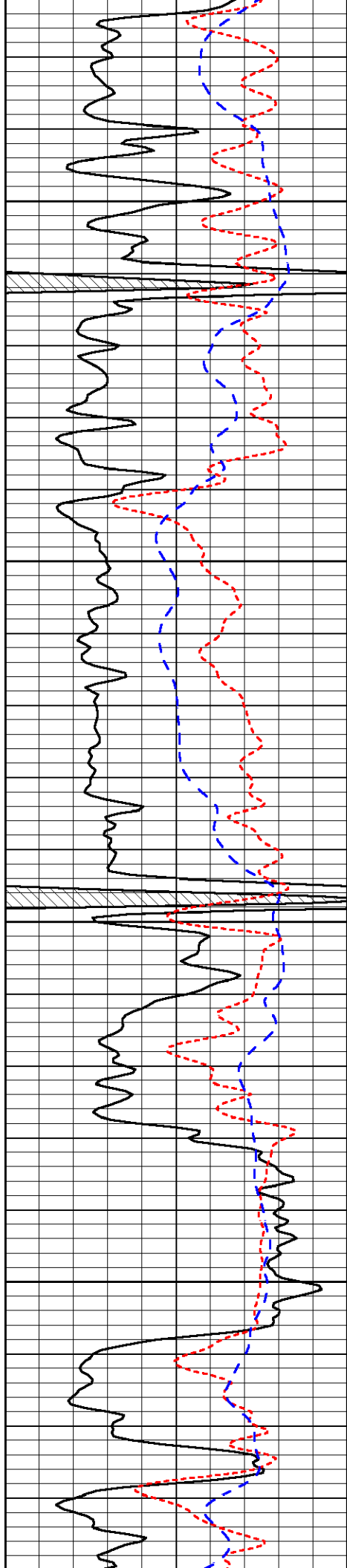
Dataset Pathname: dil/reifstack
 Presentation Format: dil
 Dataset Creation: Wed May 23 16:52:19 2012
 Charted by: Depth in Feet scaled 1:240

0	Gamma Ray	150
-160	RXO/RT	40
-200	SP	0

0.2	Deep Resistivity	2000
0.2	Medium Resistivity	2000
0.2	Shallow Resistivity	2000
10000	Line Tension	0

LSPD



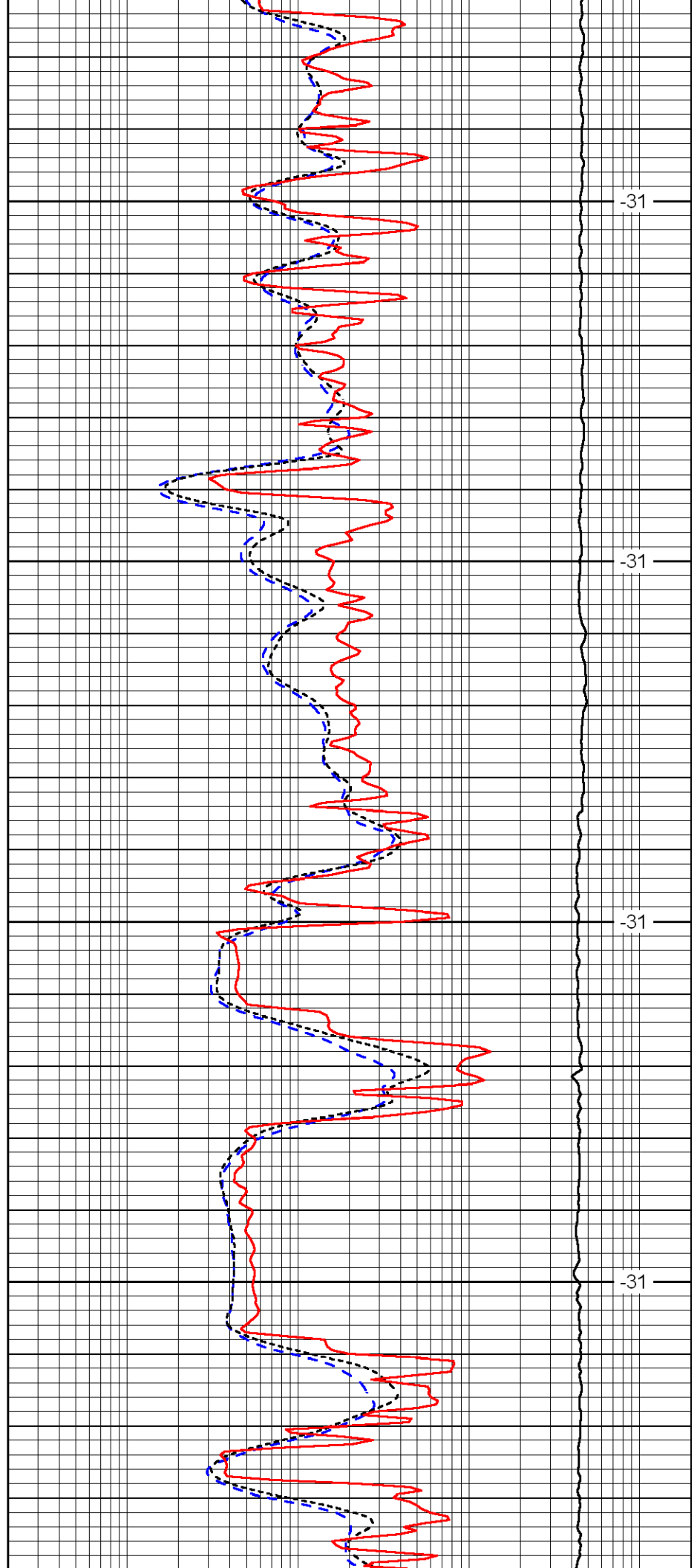


3000

3050

3100

3150

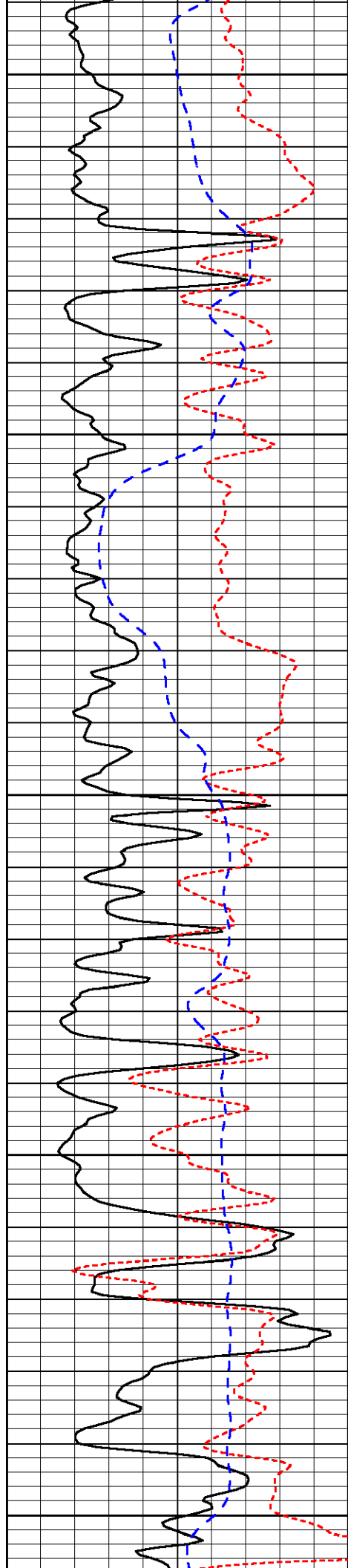


-31

-31

-31

-31



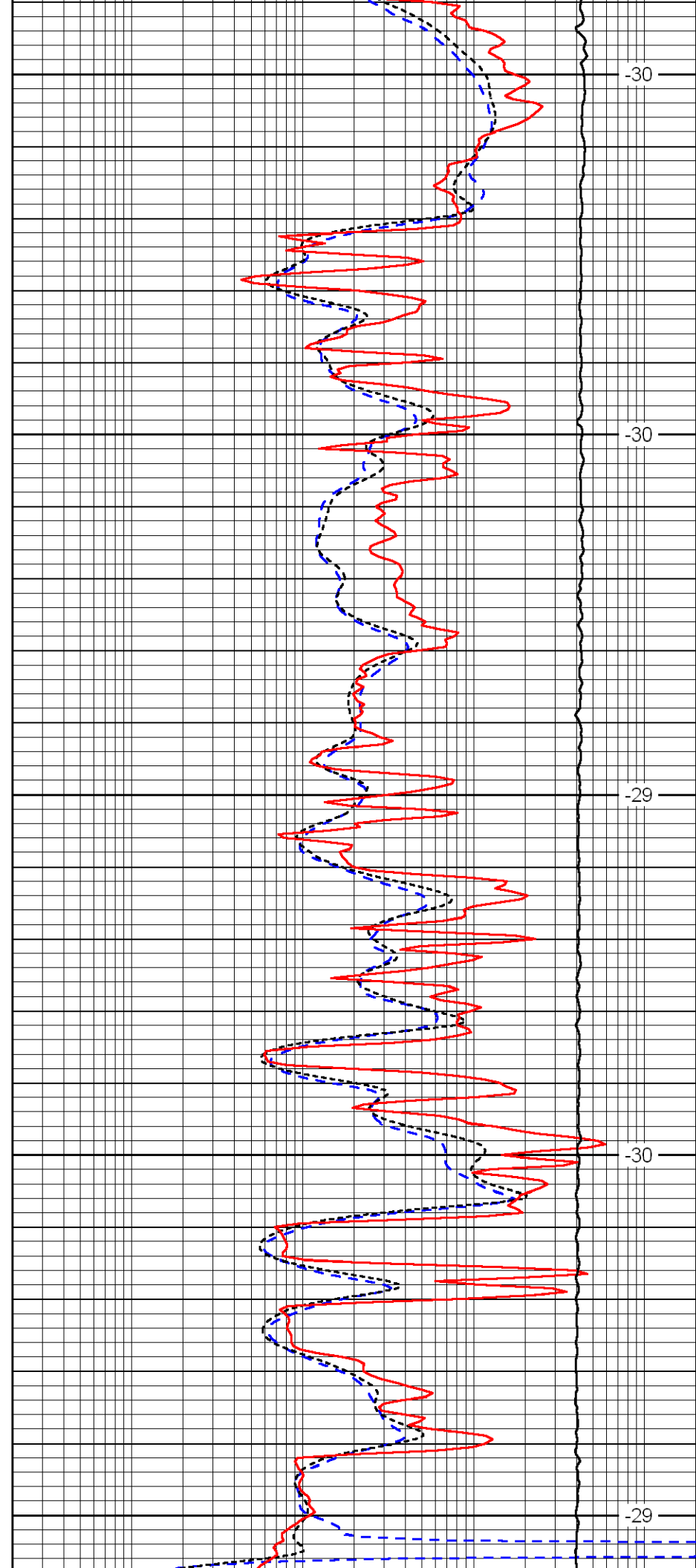
3200

3250

3300

3350

3400



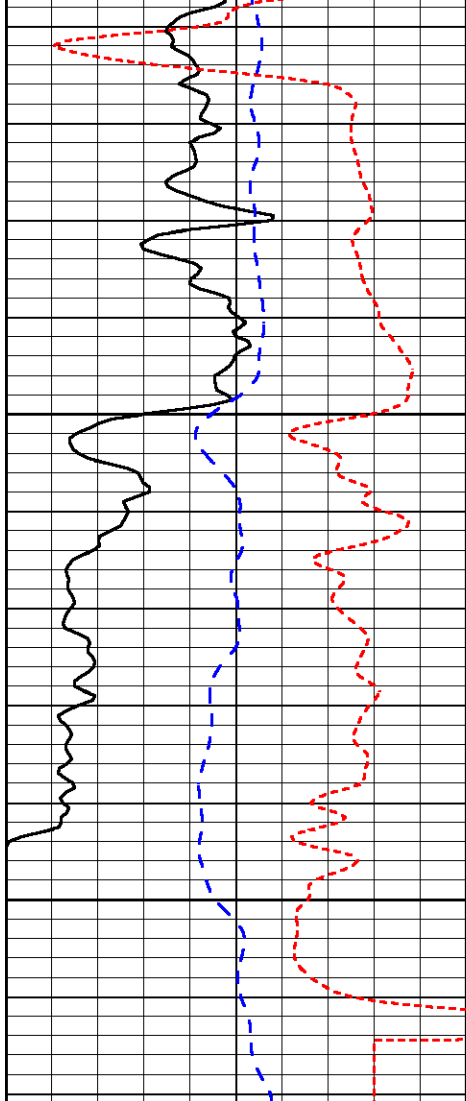
-30

-30

-29

-30

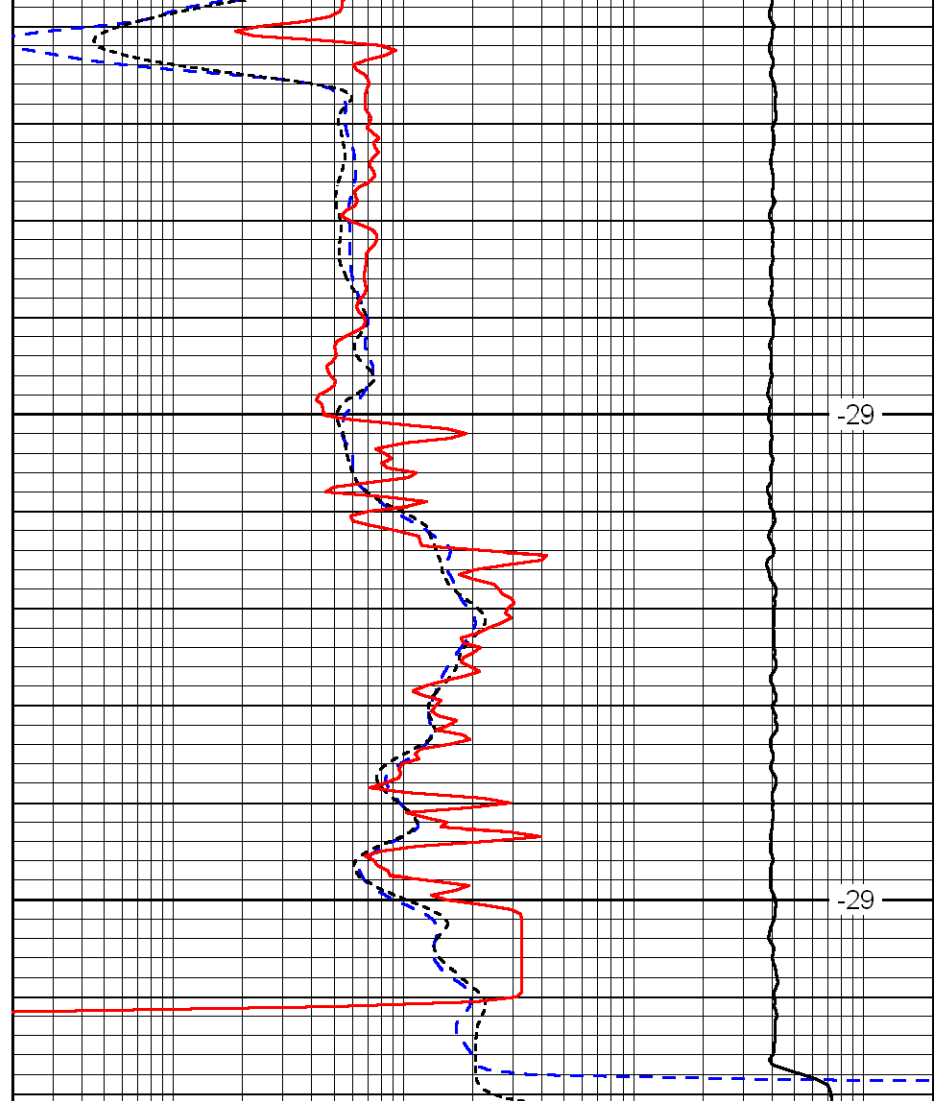
-29



0	Gamma Ray	150
-160	RXO/RT	40
-200	SP	0

3450

3500



-29

-29

0.2	Deep Resistivity	2000
0.2	Medium Resistivity	2000
0.2	Shallow Resistivity	2000
10000	Line Tension	0

LSPD