

Company: AMERICAN WARRIOR, INC.
Well: SCHWARTZ - JORDAN NO. 3
Field: CORSAIR

County: NESS
State: KANSAS
Location: 2370 FULL & 775' FEEL
AP# #: 15-155-35345-3000
Other Services

Company: AMERICAN WARRIOR, INC.
Well: SCHWARTZ - JORDAN NO. 3
Field: CORSAIR

Date: APRIL 11, 2012
Run Number: 4428
Depth: 4428
Bottom Logged Interval: 3000

Equipment Number: P1105
Recorded By: BOB ALAIS
Witnessed By: MIKE SCOTT CORSAIR

Run Number: 1525
TWO: 7.873
223
4430

<<< Fold Here >>>

All interpretations are opinions based on inferences from electrical or other measurements and we cannot and do not guarantee the accuracy or correctness of any interpretation, and we shall not, except in the case of gross or willful negligence on our part, be liable or responsible for any loss, costs, damages, or expenses incurred or sustained by anyone resulting from any interpretation made by any of our officers, agents or employees. These interpretations are also subject to our general terms and conditions set out in our current Price Schedule.

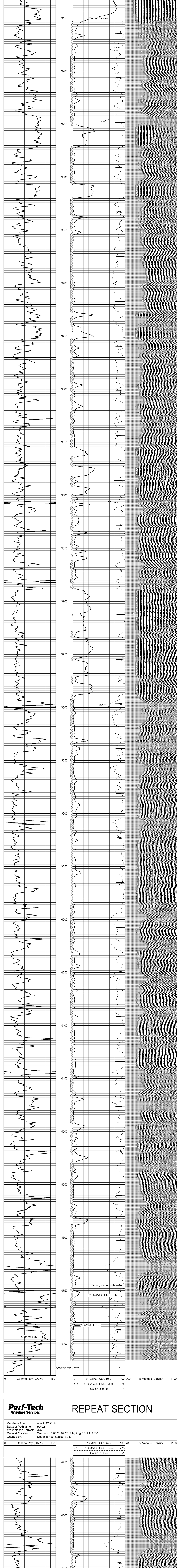
Comments

THANK YOU FOR USING
PERF-TECH WIRELINE SERVICES, INC.
785-628-3969

DIRECTIONS: HWY 96,
GG RD, 6 1/2 SOUTH
WEST INTO

Perf-Tech Wireline Services **MAIN PASS**

Database File: april111206.db
Dataset Pathname: pass3
Presentation Format: 3x5
Dataset Creation: Wed Apr 11 08:29:12 2012 by Log SCH 1111116
Charted by: Depth in Feet scaled 1:240



LOGGED TO 4428'

0 Gamma Ray (GAPI) 150 0 3' AMPLITUDE (mV) 200 5' Variable Density 1100 775 3' TRAVEL TIME (usec) 275 9 Collar Locator 1

0 Gamma Ray (GAPI) 150 0 3' AMPLITUDE (mV) 200 5' Variable Density 1100 775 3' TRAVEL TIME (usec) 275 9 Collar Locator 1

0 Gamma Ray (GAPI) 150 0 3' AMPLITUDE (mV) 200 5' Variable Density 1100 775 3' TRAVEL TIME (usec) 275 9 Collar Locator 1

Perf-Tech Wireline Services **REPEAT SECTION**

Database File: april111206.db
Dataset Pathname: pass2
Presentation Format: 3x5
Dataset Creation: Wed Apr 11 08:24:02 2012 by Log SCH 1111116
Charted by: Depth in Feet scaled 1:240

LOGGED TO 4428'

0 Gamma Ray (GAPI) 150 0 3' AMPLITUDE (mV) 200 5' Variable Density 1100 775 3' TRAVEL TIME (usec) 275 9 Collar Locator 1

0 Gamma Ray (GAPI) 150 0 3' AMPLITUDE (mV) 200 5' Variable Density 1100 775 3' TRAVEL TIME (usec) 275 9 Collar Locator 1

0 Gamma Ray (GAPI) 150 0 3' AMPLITUDE (mV) 200 5' Variable Density 1100 775 3' TRAVEL TIME (usec) 275 9 Collar Locator 1