

Company: AMERICAN WARRIOR, INC.
Well: STRECKER NO. 3-6
Field: DEWALD NORTH
County: NESS
State: KANSAS
Location: 2500' FSJ & 810' FWL
AP# #: 15-135-25313-0-000
Other Services:

Well: STRECKER NO. 3-6
Field: DEWALD NORTH
County: NESS
State: KANSAS
Location: 2500' FSJ & 810' FWL
AP# #: 15-135-25313-0-000
Other Services:

Company: AMERICAN WARRIOR, INC.
Well: STRECKER NO. 3-6
Field: DEWALD NORTH
County: NESS
State: KANSAS
Location: 2500' FSJ & 810' FWL
AP# #: 15-135-25313-0-000
Other Services:

Well: STRECKER NO. 3-6
Field: DEWALD NORTH
County: NESS
State: KANSAS
Location: 2500' FSJ & 810' FWL
AP# #: 15-135-25313-0-000
Other Services:

Time Well Read: //
Equipment Number: //
Logged By: BOB KLAUS
Revised By: MR SCOTT COSSAR
Fun Number: 12.25
Bit: 1391
TWS: 7.875
Casing Record: Size: 8.588
Sinker String: 1381
Production String: 5.112
Bottom: 4258

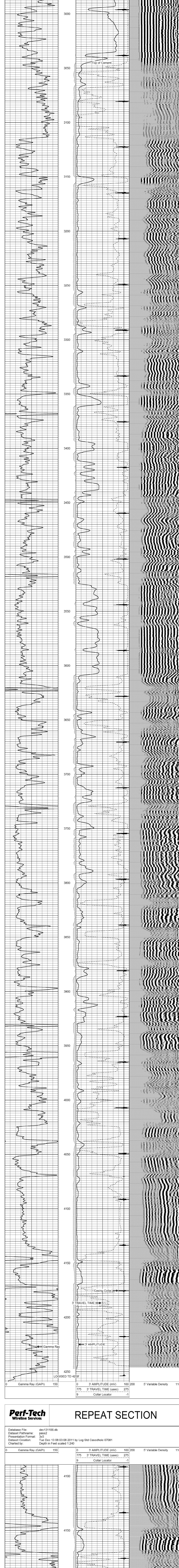
Comments: All interpretations are opinions based on inferences from electrical or other measurements and we cannot and do not guarantee the accuracy or correctness of any interpretation, and we shall not, except in the case of gross or willful negligence on our part, be liable or responsible for any loss, costs, damages, or expenses incurred or sustained by anyone resulting from any interpretation made by any of our officers, agents or employees. These interpretations are also subject to our general terms and conditions set out in our current Price Schedule.

THANK YOU FOR USING
PERF-TECH WIRELINE SERVICES, INC.
785-628-3969

DIRECTIONS: 3/4 SOUTH OF BAZINE
EAST INTO

Perf-Tech Wireline Services **MAIN PASS**

Database File: dec:131106.db
Dataset Pathname: pass3
Presentation Format: 3x5
Dataset Creation: Tue Dec 13 08:10:27 2011 by Log Std Casedhole 07081
Charted by: Depth in Feet scaled 1.240



LOGGED TD 4258'

Gamma Ray (GAPI) 0 150
3' AMPLITUDE (mV) 0 100 200
3' TRAVEL TIME (usec) 775 275
Collar Locator 9 -1

Gamma Ray (GAPI) 0 150
3' AMPLITUDE (mV) 0 100 200
3' TRAVEL TIME (usec) 775 275
Collar Locator 9 -1

Gamma Ray (GAPI) 0 150
3' AMPLITUDE (mV) 0 100 200
3' TRAVEL TIME (usec) 775 275
Collar Locator 9 -1

Perf-Tech Wireline Services **REPEAT SECTION**

Database File: dec:131106.db
Dataset Pathname: pass2
Presentation Format: 3x5
Dataset Creation: Tue Dec 13 08:03:08 2011 by Log Std Casedhole 07081
Charted by: Depth in Feet scaled 1.240

LOGGED TD 4258'

Gamma Ray (GAPI) 0 150
3' AMPLITUDE (mV) 0 100 200
3' TRAVEL TIME (usec) 775 275
Collar Locator 9 -1

Gamma Ray (GAPI) 0 150
3' AMPLITUDE (mV) 0 100 200
3' TRAVEL TIME (usec) 775 275
Collar Locator 9 -1

Gamma Ray (GAPI) 0 150
3' AMPLITUDE (mV) 0 100 200
3' TRAVEL TIME (usec) 775 275
Collar Locator 9 -1