



**SUPERIOR
Hays,
Kansas**

**COMPENSATED
DENSITY / NEUTRON
LOG**

Company MUSTANG ENERGY CORPORATION
Well WERTH #1
Field
County ELLIS **State** KANSAS

Company MUSTANG ENERGY CORPORATION
Well WERTH #1
Field
County ELLIS
State KANSAS

Location: API #: 15-165-21971-0000
 NE - NW - SE - NW
 1340' FNL & 1845' FWL
 SEC 6 TWP 16S RGE 18W
 Permanent Datum: GROUND LEVEL Elevation: 2004
 Log Measured From: KELLY BUSHING 8' A.G.L.
 Drilling Measured From: KELLY BUSHING
 Other Services: DIL MEL/SON
 Elevation: K.B. 2012 D.F. G.L. 2004

Date	5-12-12		
Run Number	ONE		
Depth Driller	3660		
Depth Logger	3659		
Bottom Logged Interval	3636		
Top Log Interval	2900		
Casing Driller	1185		
Casing Logger	1185		
Bit Size	7.875		
Type Fluid in Hole	CHEMICAL MUD		
Density / Viscosity	9.3 / 50	CHLORIDES 5.600	
pH / Fluid Loss	10.5 / 9.6		
Source of Sample	FLOWLINE		
Rim @ Meas. Temp	0.50 @ 70F		
Rmf @ Meas. Temp	0.38 @ 70F		
Rmc @ Meas. Temp	0.60 @ 70F		
Source of Rmf / Rmc	MEASURED		
Rim @ BHT	0.31 @ 113F		
Time Circulation Stopped	2 HOURS		
Time Logger on Bottom			
Maximum Recorded Temperature	113F		
Equipment Number	860		
Location	HAYS, KS.		
Recorded By	DAN GOTTSCHALK		
Witnessed By	HERB DEINES	RODNEY BRIN	

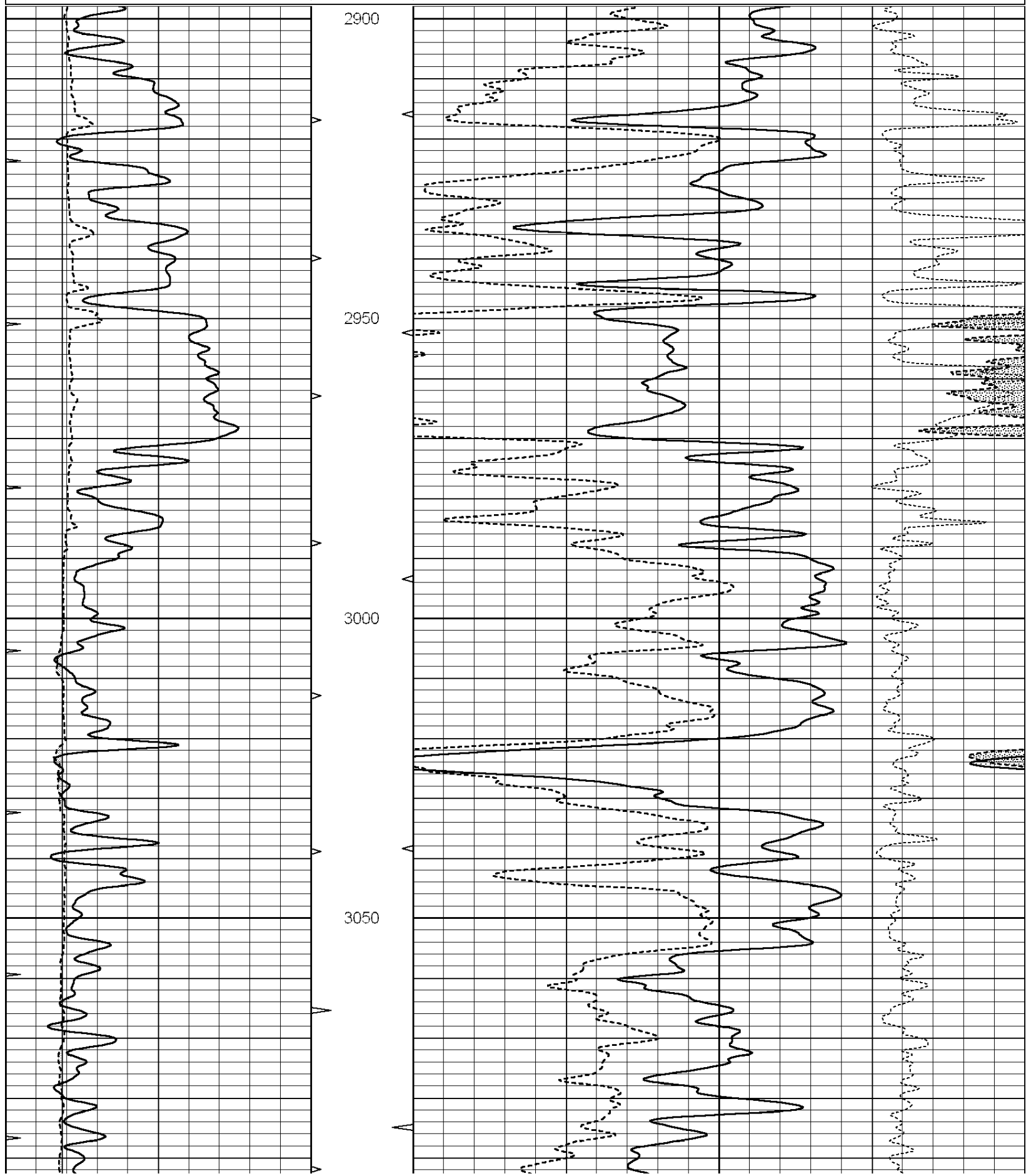
<<< Fold Here >>>

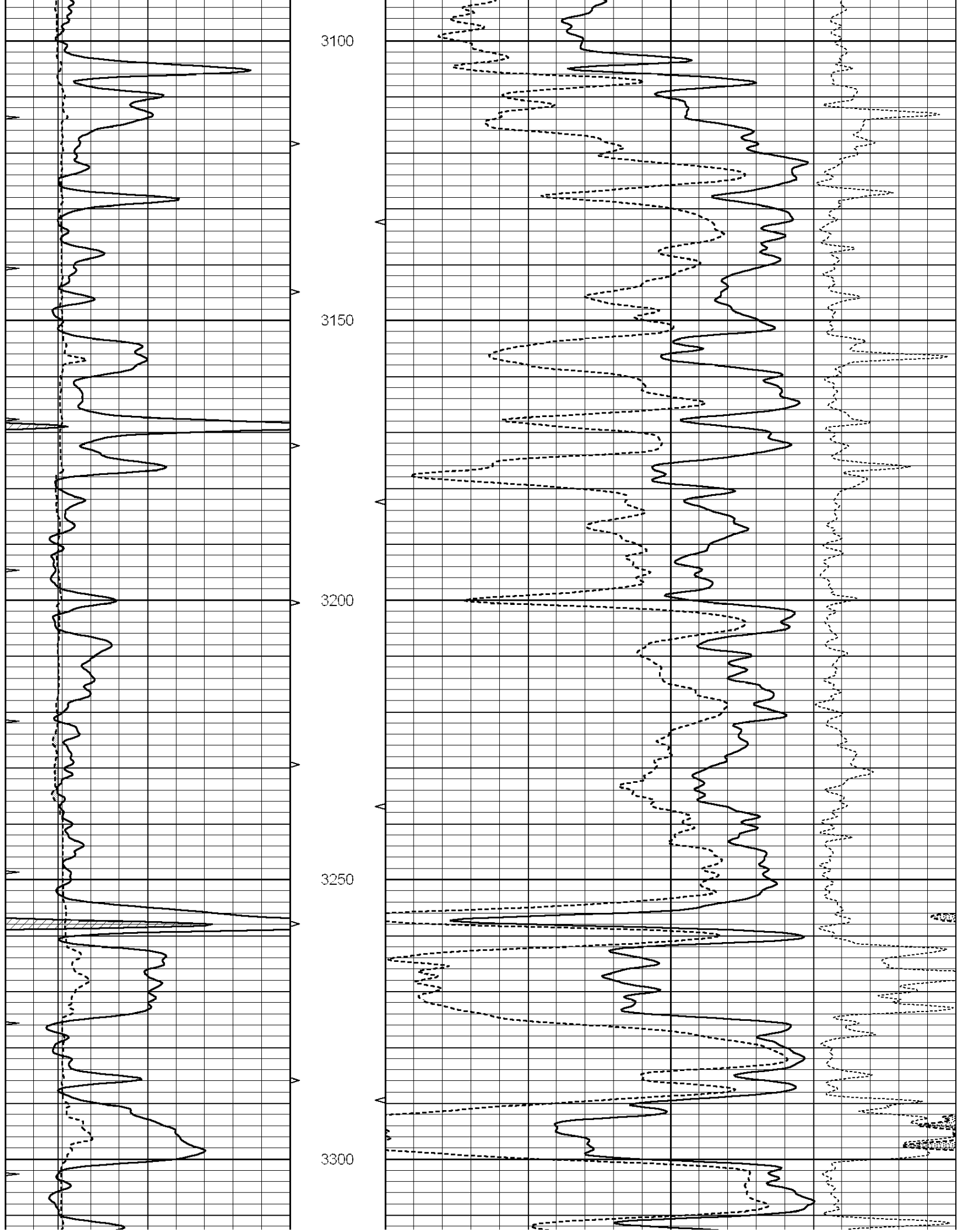
All interpretations are opinions based on inferences from electrical or other measurements and we cannot and do not guarantee the accuracy or correctness of any interpretation, and we shall not, except in the case of gross or willful negligence on our part, be liable or responsible for any loss, costs, damages, or expenses incurred or sustained by anyone resulting from any interpretation made by any of our officers, agents or employees. These interpretations are also subject to our general terms and conditions set out in our current Price Schedule.

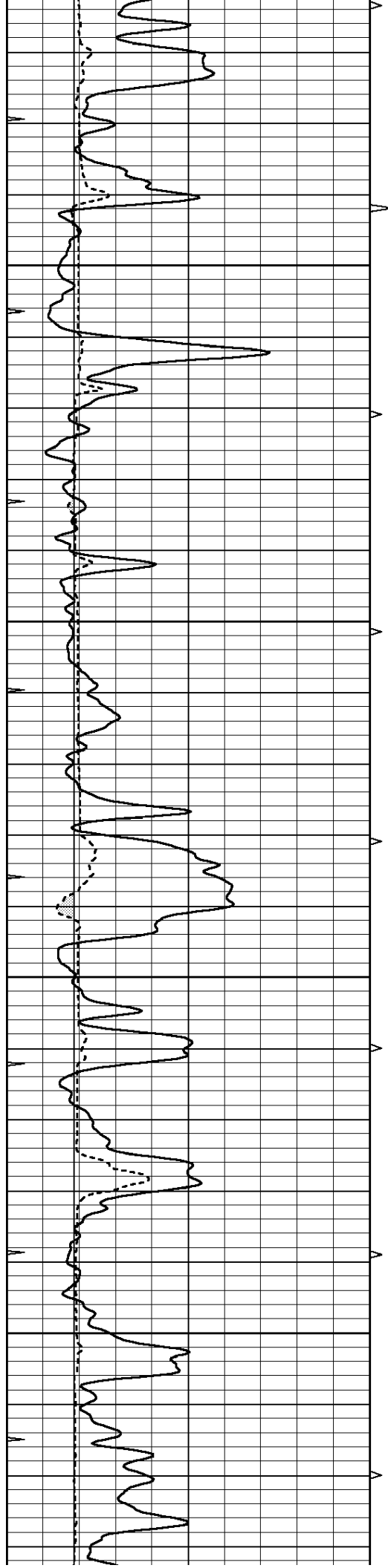
Comments

THANK YOU FOR USING SUPERIOR WELL SERVICES, INC.
HAYS, KS. 785-628-6395
DIRECTIONS: HWY 183 & THE RUSH / ELLIS COUNTY LINE - 2 WEST - SOUTH INTO

0	GAMMA RAY (GAPI)	150	ABHV	30	COMPENSATED DENSITY (pu)	-10
0	MINMK	20	10 (ft3)	0 30	COMPENSATED NEUTRON (pu)	-10
6	MELCAL (in)	16	TBHV		-0.25 CORRECTION (g/cc)	0.25
			0 (ft3)	10		





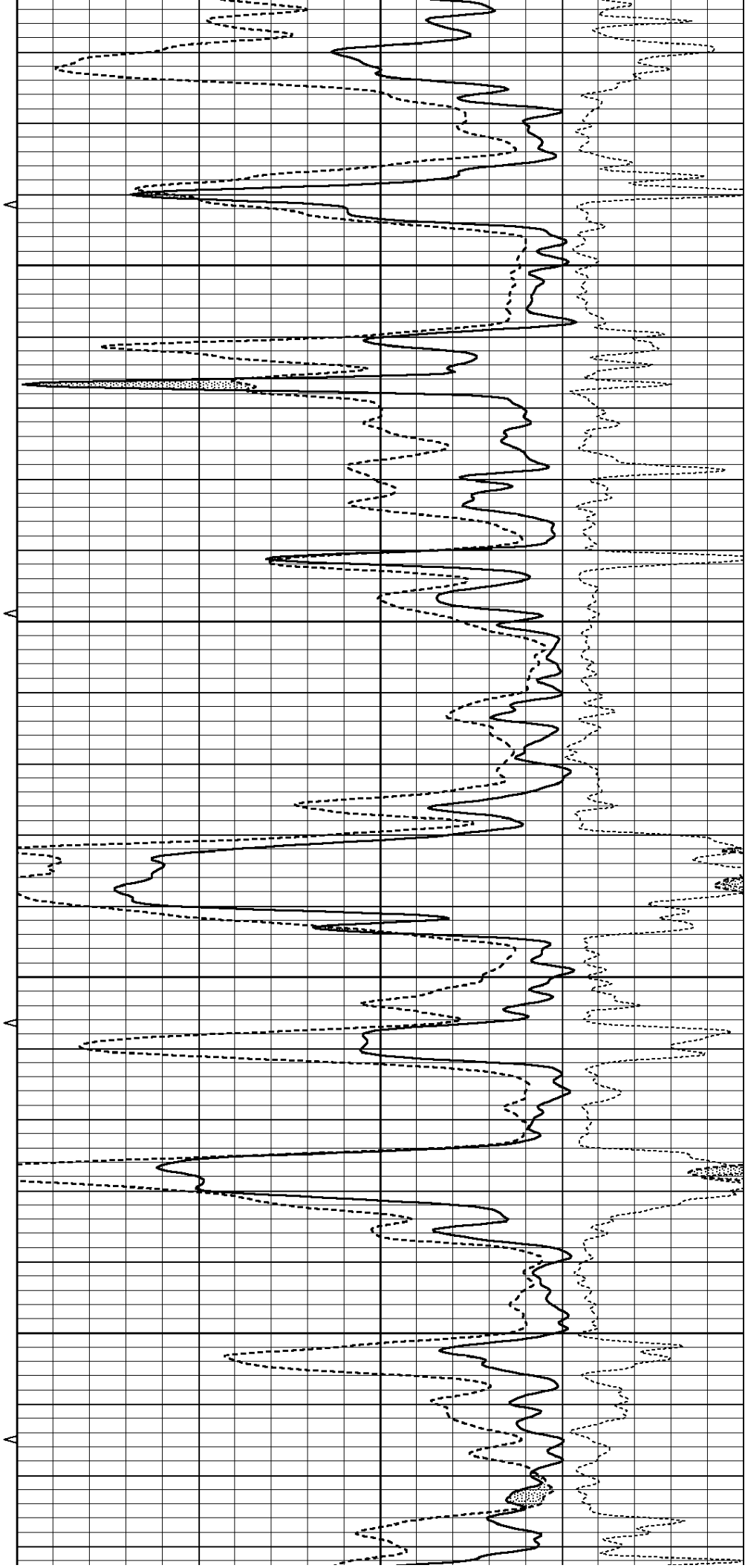


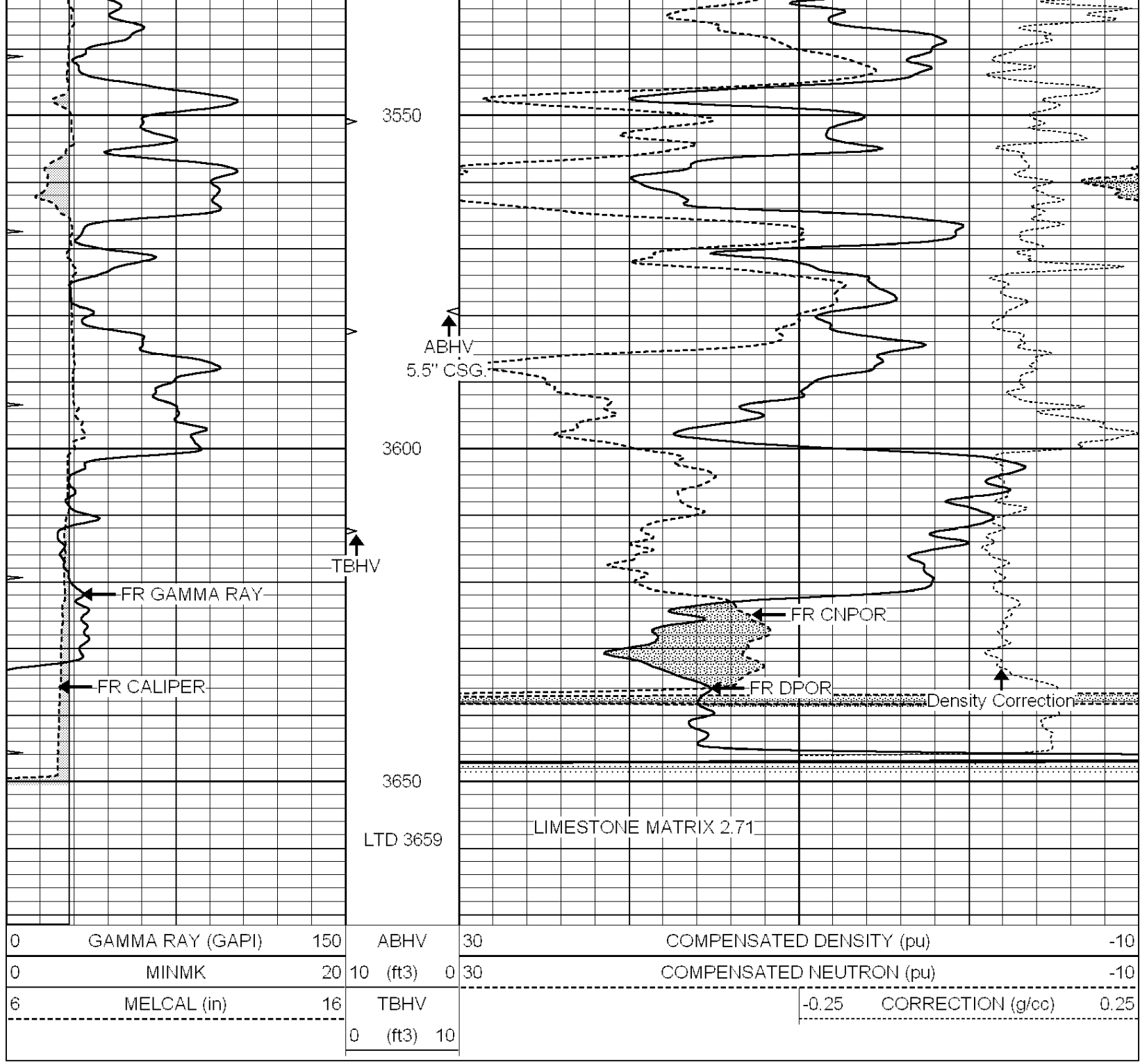
3350

3400

3450

3500





0	GAMMA RAY (GAPI)	150	ABHV	30	COMPENSATED DENSITY (pu)	-10
0	MINMK	20	10 (ft3)	0 30	COMPENSATED NEUTRON (pu)	-10
6	MELCAL (in)	16	TBHV		-0.25 CORRECTION (g/cc)	0.25
			0 (ft3)	10		



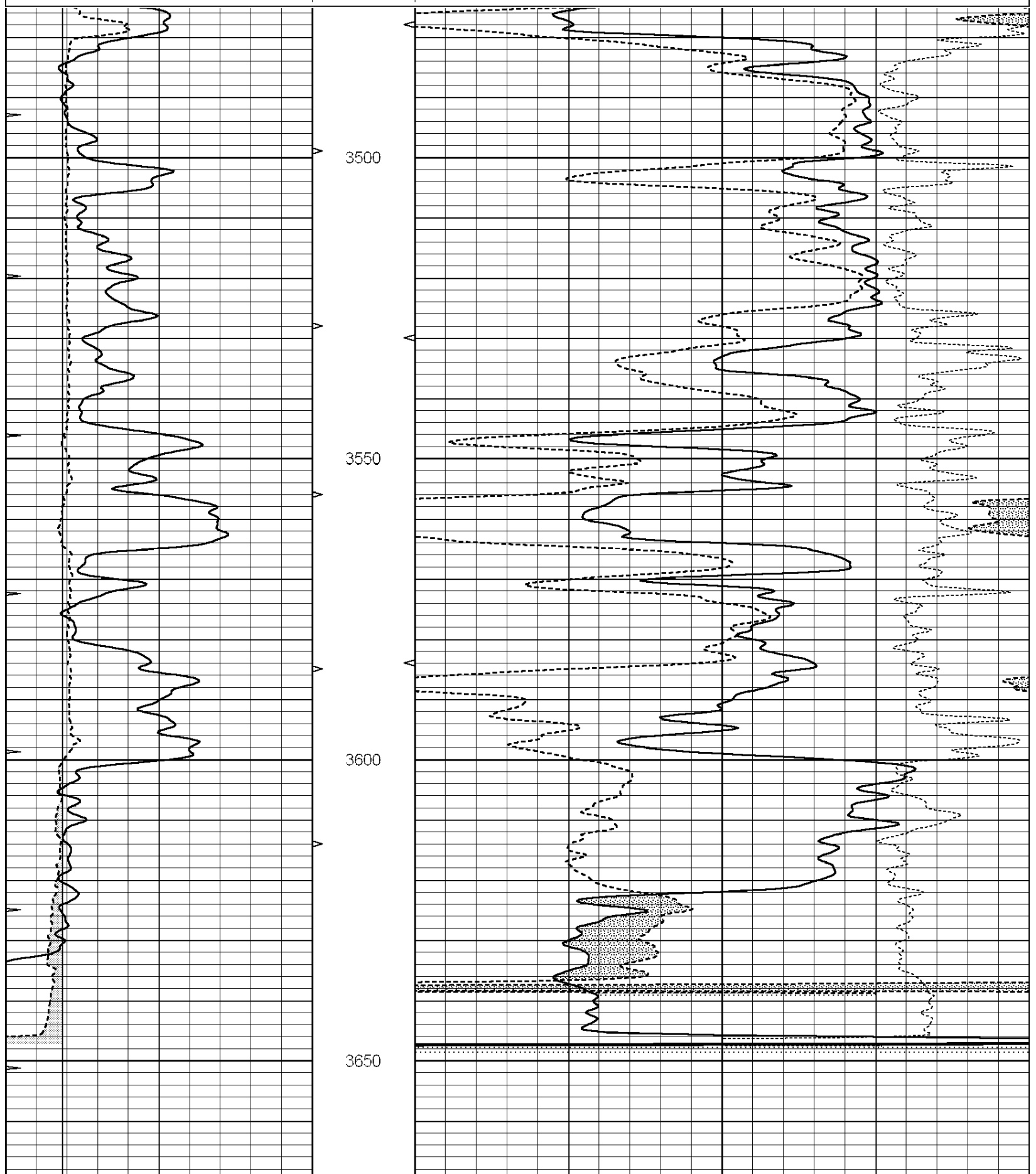
SUPERIOR
Hays,
Kansas

REPEAT SECTION

Database File: 9177ddn.db
 Dataset Pathname: pass2.1
 Presentation Format: den_neu
 Dataset Creation: Sat May 12 08:04:28 2012 by Calc Open-Cased 090629
 Charted by: Depth in Feet scaled 1:240

0	GAMMA RAY (GAPI)	150	ABHV	30	COMPENSATED DENSITY (pu)	-10
6	CALIPER (in)	16	10 (ft3)	0 30	COMPENSATED NEUTRON (pu)	-10
0	MINMK	20	TBHV		-0.25 CORRECTION (g/cc)	0.25

0 (ft3) 10



0	GAMMA RAY (GAPI)	150	ABHV	30	COMPENSATED DENSITY (pu)	-10	
6	CALIPER (in)	16	10 (ft3)	0 30	COMPENSATED NEUTRON (pu)	-10	
0	MINMK	20	TBHV		-0.25	CORRECTION (g/cc)	0.25
			0 (ft3)	10			

Calibration Report

Database File: 9177ddn.db
 Dataset Pathname: pass1
 Dataset Creation: Sat May 12 07:06:21 2012 by Log Open-Cased 090629

Dual Induction Calibration Report

Serial-Model: PROBE9-DILG
 Surface Cal Performed: Thu May 10 04:20:47 2012
 Downhole Cal Performed: Mon Jul 28 12:02:56 2008
 After Survey Verification Performed: Mon Jul 28 12:02:56 2008

Surface Calibration

Loop:	Readings			References			Results	
	Air	Loop		Air	Loop		m	b
Deep	-0.014	0.629	V	0.000	400.000	mmho/m	550.000	-8.000
Medium	0.039	0.728	V	0.000	464.000	mmho/m	540.000	-10.000
Internal:	Zero	Cal		Zero	Cal		m	b
Deep	0.011	0.610	V	0.000	400.000	mmho/m	667.135	-7.256
Medium	0.005	0.712	V	0.000	464.000	mmho/m	655.677	-3.102

Downhole Calibration

	Readings			References			Results	
	Zero	Cal		Zero	Cal		m'	b'
Deep	0.000	0.000	mmho/m	14.508	388.384	mmho/m	1.000	0.000
Medium	0.000	0.000	mmho/m	166.367	504.400	mmho/m	1.000	0.000
LL3		7.500	V		1400.000	Ohm-m		
		0.000	V		20.000	Ohm-m		
		-7.200	V		3970.000	mmho-m		

After Survey Verification

	Readings			Targets			Results	
	Zero	Cal		Zero	Cal		m'	b'
Deep	0.000	0.000	mmho/m	0.000	0.000	mmho/m	0.000	0.000
Medium	0.000	0.000	mmho/m	0.000	0.000	mmho/m	0.000	0.000
LL3		1.000	Ohm-m		1.000	Ohm-m		
		0.000	Ohm-m		0.000	Ohm-m		
		1.000	mmho-m		1.000	mmho-m		

Compensated Density Calibration Report

Serial-Model: GEAR1-GEARHART
 Source / Verifier: 147 / 147
 Master Calibration Performed: Thu May 10 04:14:54 2012

Master Calibration

	Density		Far Detector	Near Detector	
Magnesium	1.710	g/cc	1243.76	629.14	cps
Aluminum	2.590	g/cc	282.16	435.01	cps
Spine Angle = 76.03			Density/Spine Ratio = 0.576		
	Size		Reading		
Small Ring	9.00	in	4.01	V	
Large Ring	14.00	in	5.67	V	

Compensated Neutron Calibration Report

Serial Number: NUE_2I
 Tool Model: G

CALIBRATION

Detector	Readings	Target	Normalization
Short Space	1.00 cps	1.00 cps	1.0000
Long Space	1.00 cps	1.00 cps	1.0000

Gamma Ray Calibration Report

Serial Number: GR5
 Tool Model: OPEN
 Performed: Thu May 10 07:14:18 2012

Calibrator Value: 1.0 GAPI

Background Reading: 0.0 cps
 Calibrator Reading: 1.0 cps

Sensitivity: 0.6600 GAPI/cps