



SUPERIOR
Hays,
Kansas

MICRO
LOG

Company MUSTANG ENERGY CORPORATION
Well WERTH #1
Field
County ELLIS State KANSAS

Location: API #: 15-165-21971-0000
NE - NW - SE - NW
1340' FNL & 1845' FWL
SEC 6 TWP 16S RGE 18W
GROUND LEVEL Elevation 2004
Log Measured From KELLY BUSHING 8' A.G.L.
Drilling Measured From KELLY BUSHING
Other Services
ONL/CDL
DIL/SON
Elevation
K.B. 2012
D.F.
G.L. 2004

Date	5-12-12		
Run Number	TWO		
Depth Driller	3660		
Depth Logger	3659		
Bottom Logged Interval	3640		
Top Log Interval	2900		
Casing Driller	1185		
Casing Logger	1185		
Bit Size	7.875		
Type Fluid in Hole	CHEMICAL MUD		
Density / Viscosity	9.3 / 50	CHLORIDES 5.600	
pH / Fluid Loss	10.5 / 9.6		
Source of Sample	FLOWLINE		
Rim @ Meas. Temp	0.50 @ 70F		
Rmf @ Meas. Temp	0.38 @ 70F		
Rmc @ Meas. Temp	0.60 @ 70F		
Source of Rmf / Rmc	MEASURED		
Rim @ BHT	0.31 @ 113F		
Time Circulation Stopped	2 HOURS		
Time Logger on Bottom			
Maximum Recorded Temperature	113F		
Equipment Number	860		
Location	HAYS, KS.		
Recorded By	DAN GOTTSCHALK		
Witnessed By	HERB DEINES	RODNEY BRIN	

<<< Fold Here >>>

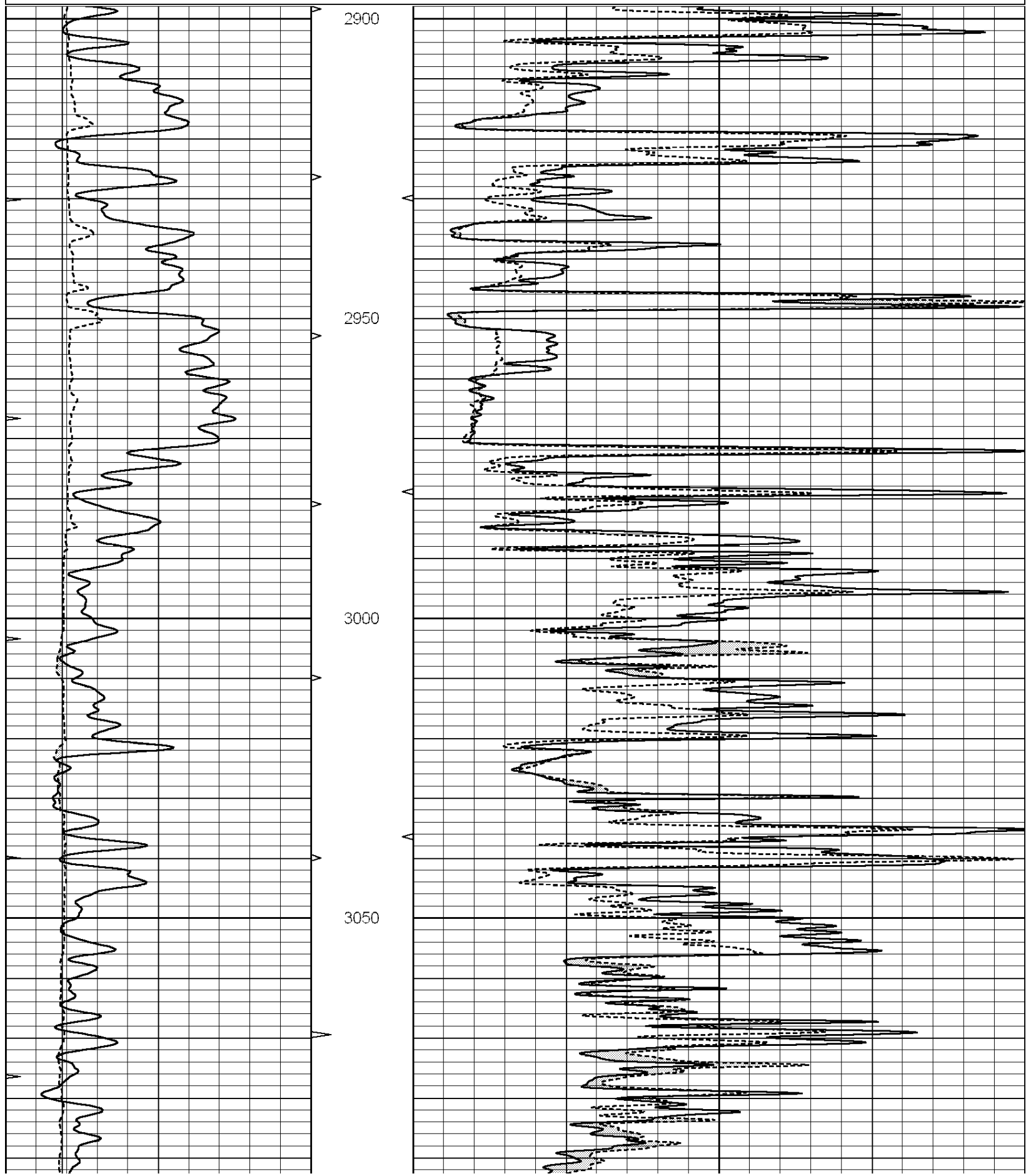
All interpretations are opinions based on inferences from electrical or other measurements and we cannot and do not guarantee the accuracy or correctness of any interpretation, and we shall not, except in the case of gross or willful negligence on our part, be liable or responsible for any loss, costs, damages, or expenses incurred or sustained by anyone resulting from any interpretation made by any of our officers, agents or employees. These interpretations are also subject to our general terms and conditions set out in our current Price Schedule.

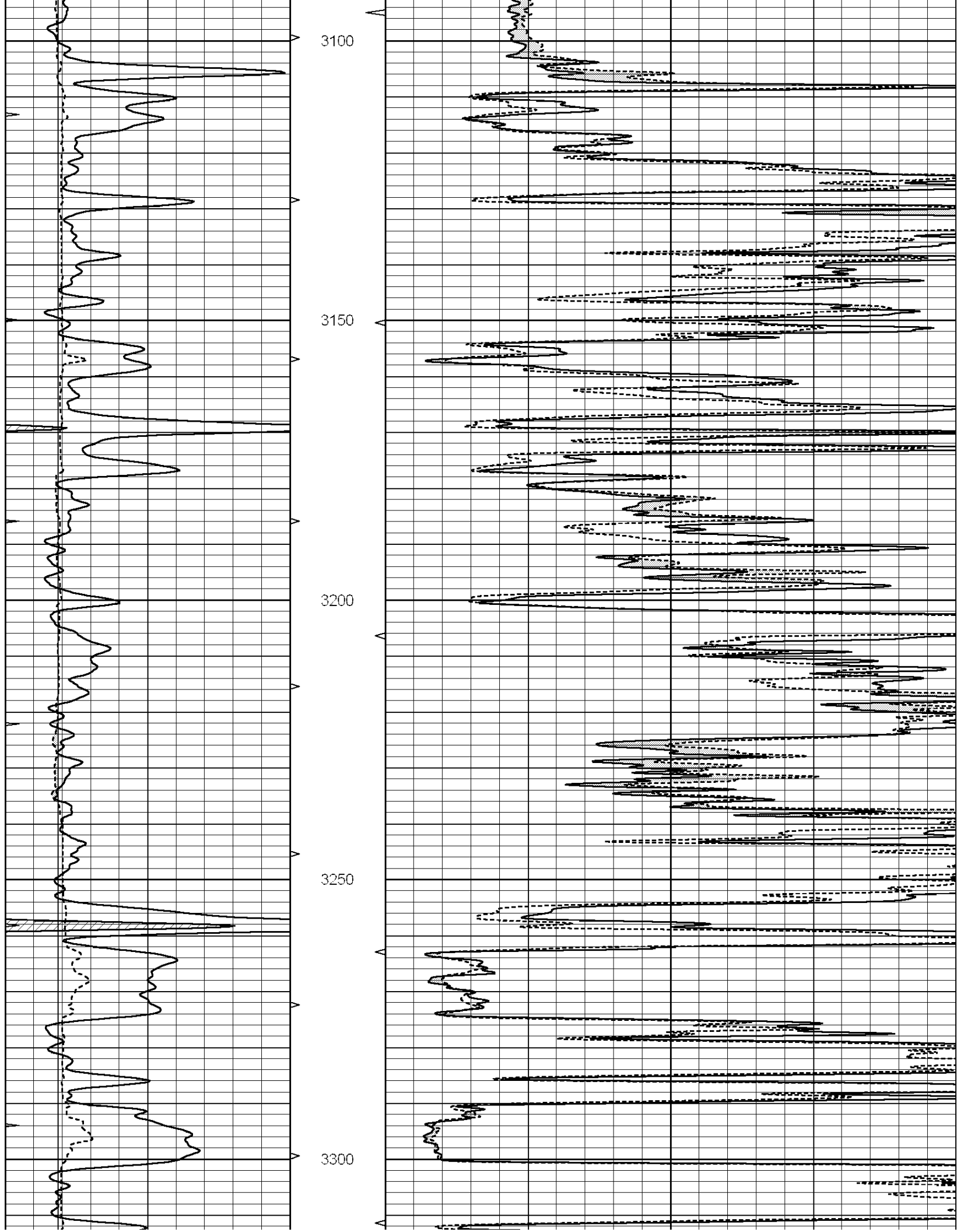
Comments

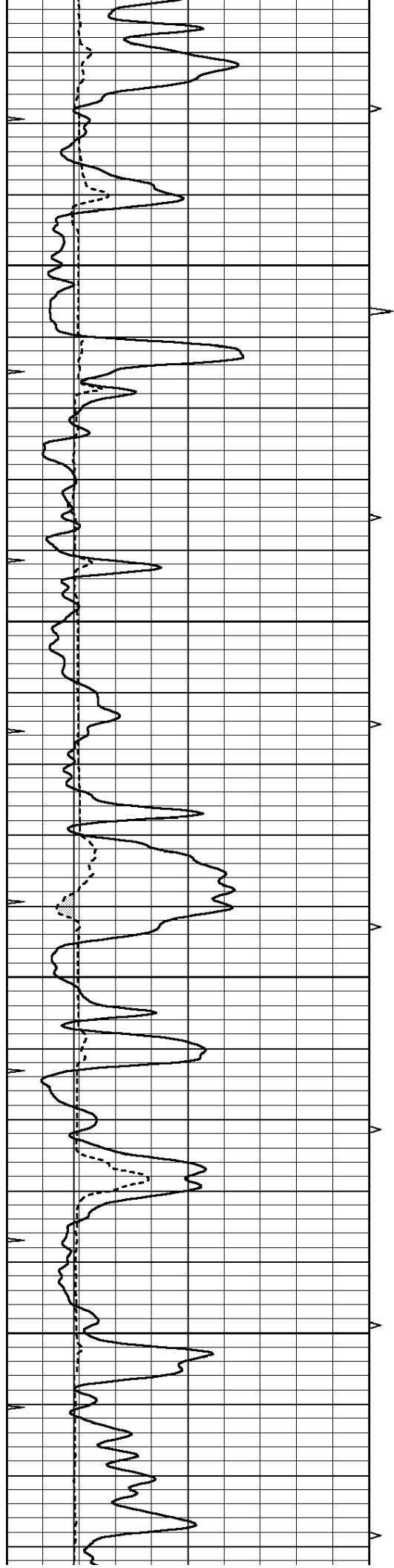
THANK YOU FOR USING SUPERIOR WELL SERVICES, INC.
HAYS, KS. 785-628-6395
DIRECTIONS: HWY 183 & THE RUSH / ELLIS COUNTY LINE - 2 WEST - SOUTH INTO

0	GAMMA RAY (GAPI)	150
6	MELCAL (in)	16
0	MINMK	20

0	MEL1.5 (Ohm-m)	40
0	MEL2.0 (Ohm-m)	40





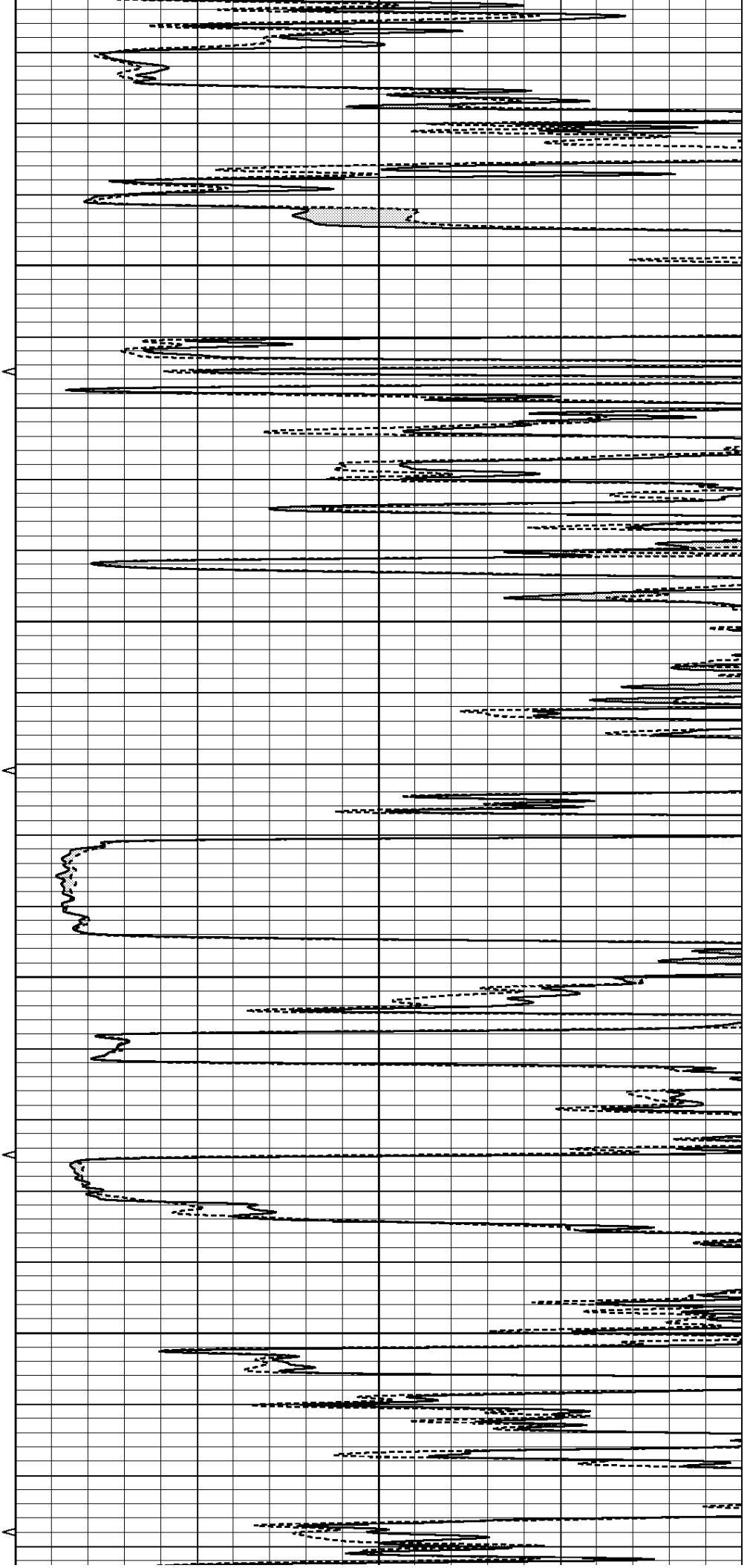


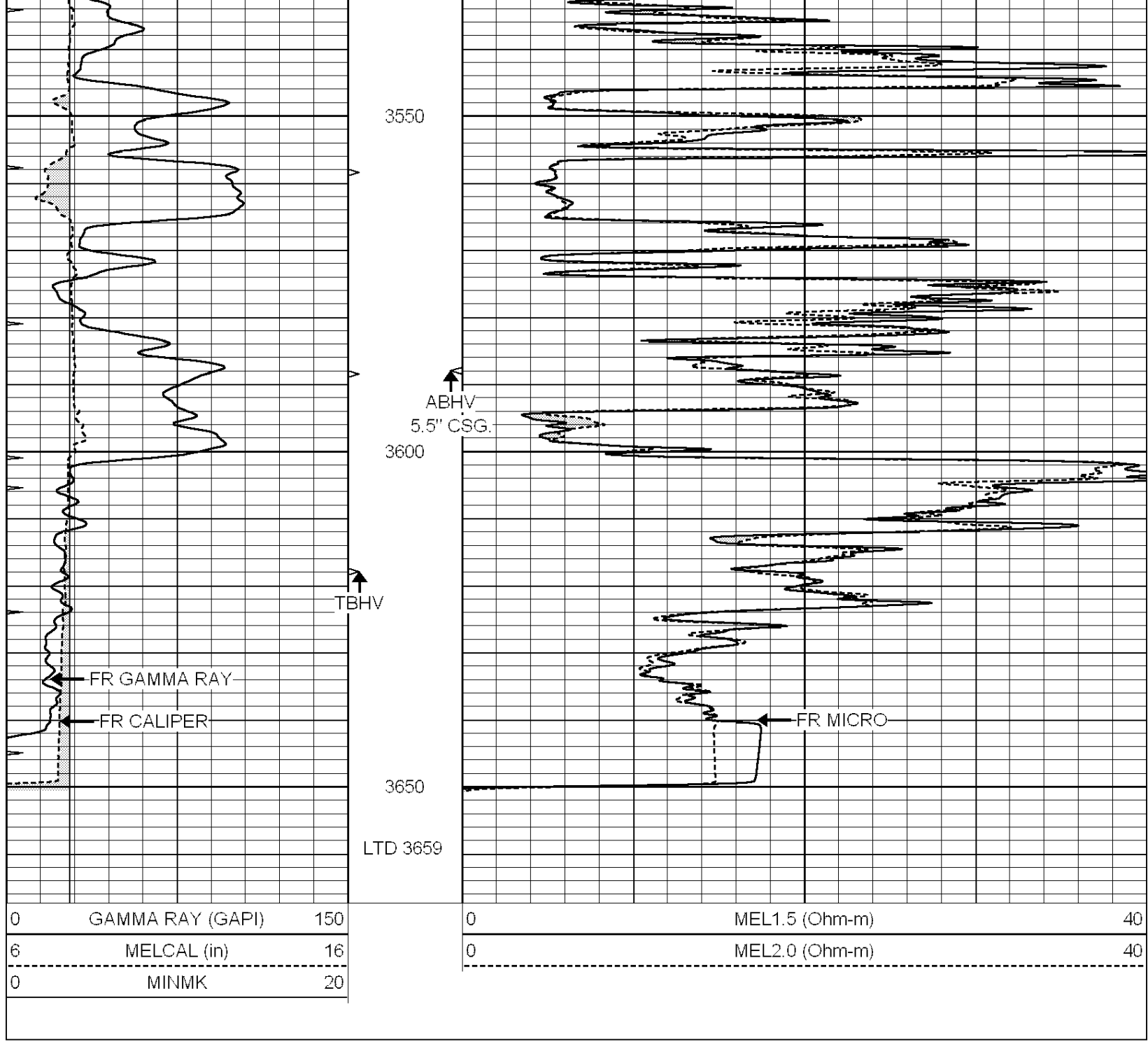
3350

3400

3450

3500





0	GAMMA RAY (GAPI)	150
6	MELCAL (in)	16
0	MINMK	20

0	MEL1.5 (Ohm-m)	40
0	MEL2.0 (Ohm-m)	40



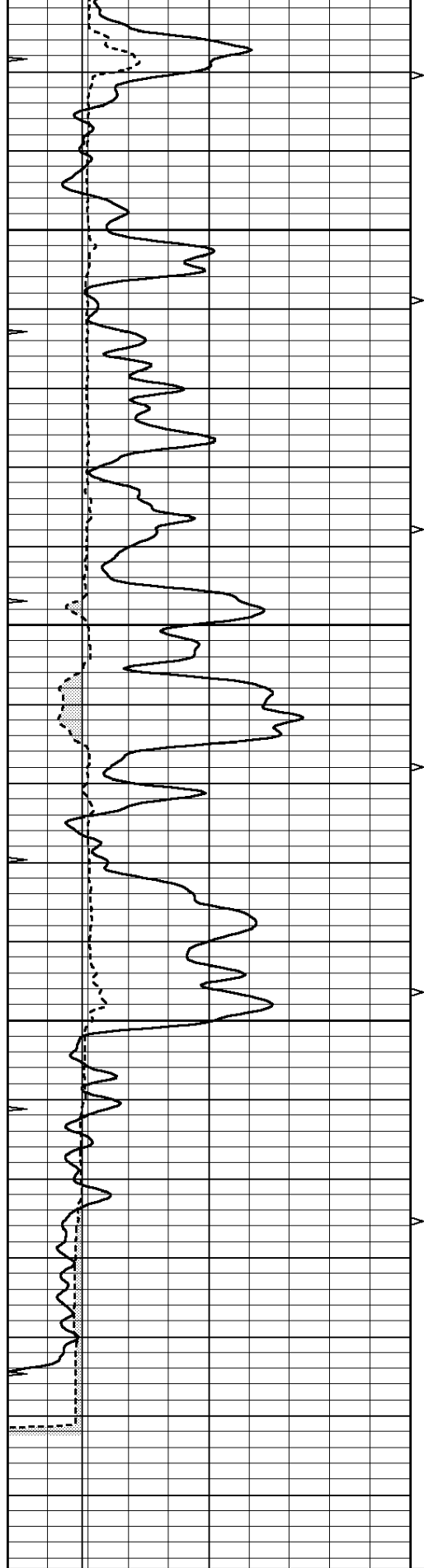
SUPERIOR
Hays,
Kansas

REPEAT SECTION

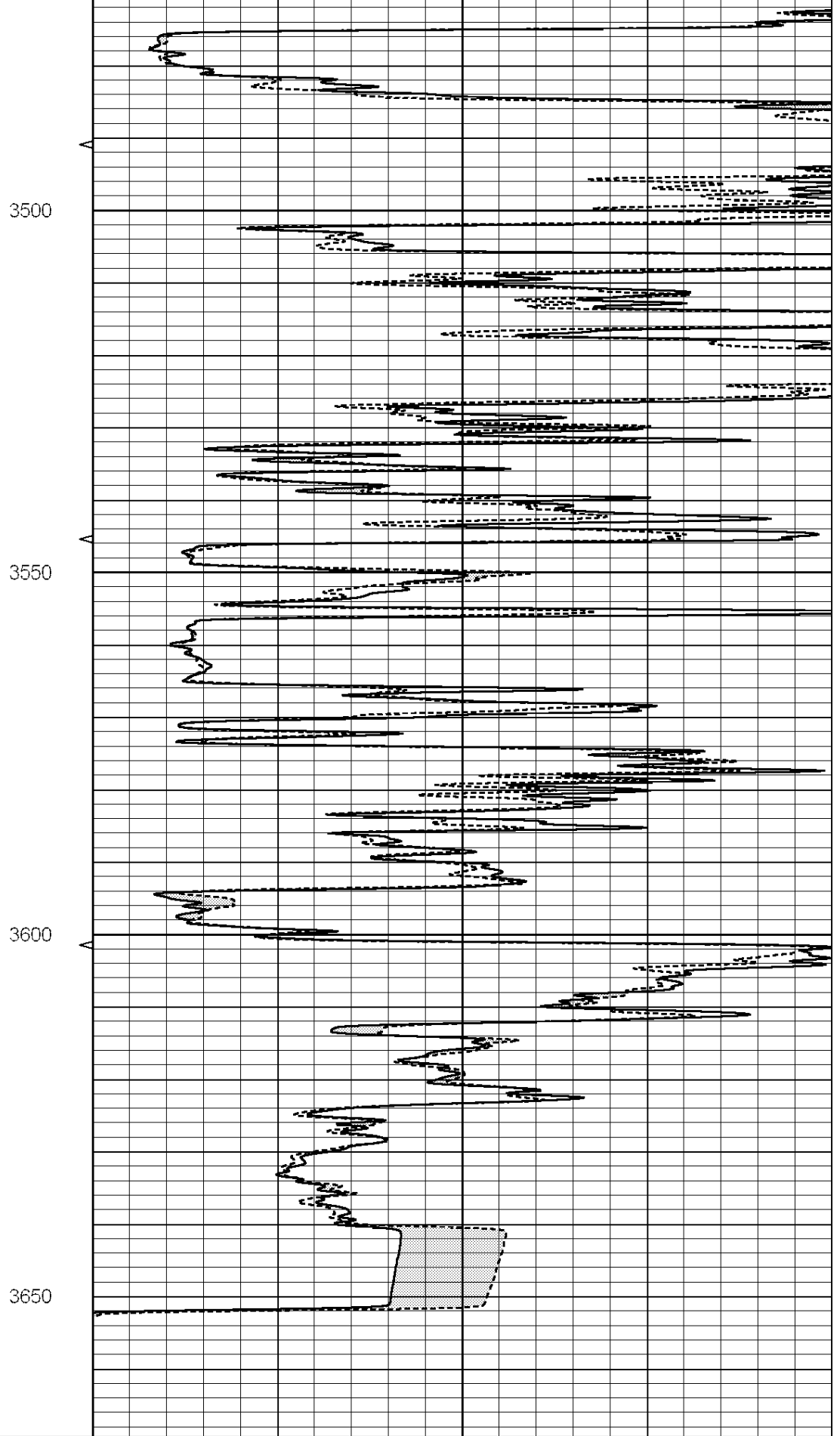
Database File: 9177ddh.db
 Dataset Pathname: pass6
 Presentation Format: micro
 Dataset Creation: Sat May 12 09:29:57 2012 by Log Open-Cased 090629
 Charted by: Depth in Feet scaled 1:240

0	GAMMA RAY (GAPI)	150
6	MELCAL (in)	16
0	MINMK	20

0	MEL1.5 (Ohm-m)	40
0	MEL2.0 (Ohm-m)	40



0	GAMMA RAY (GAPI)	150
6	MELCAL (in)	16
0	MINMK	20



0	MEL1.5 (Ohm-m)	40
0	MEL2.0 (Ohm-m)	40

Calibration Report

Database File: 9177ddn.db
 Dataset Pathname: pass6
 Dataset Creation: Sat May 12 09:29:57 2012 by Log Open-Cased 090629

MICRO Calibration Report

Serial Number: MICRO4
 Tool Model: PROBE
 Performed: Thu May 10 08:04:28 2012

Caliper Calibration:	Gain=1.844	Offset=-2.151
	Low Cal	High Cal
References	7.900	13.000
Readings	5.449	8.214

1.5" Calibration:	Gain=40.000	Offset=-0.800
	Low Cal	High Cal
References	0.000	20.000
Readings	0.009	1.541

2" Calibration:	Gain=45.000	Offset=0.200
	Low Cal	High Cal
References	0.000	20.000
Readings	0.004	1.198

Gamma Ray Calibration Report

Serial Number: GR5
 Tool Model: OPEN
 Performed: Thu May 10 07:14:18 2012

Calibrator Value:	1.0	GAPI
Background Reading:	0.0	cps
Calibrator Reading:	1.0	cps
Sensitivity:	0.5900	GAPI/cps