



SUPERIOR
Hays,
Kansas

SONIC
LOG

Company **MUSTANG ENERGY CORPORATION**
Well **WERTH #1**
Field
County **ELLIS** State **KANSAS**

Location: **API # : 15-165-21971-0000**
NE - NW - SE - NW
1340' FNL & 1845' FWL
SEC 6 TWP 16S RGE 18W
Permanent Datum **GROUND LEVEL** Elevation **2004**
Log Measured From **KELLY BUSHING 8' A.G.L.**
Drilling Measured From **KELLY BUSHING**

Other Services
CNL/CDL
DIL/MEL

Elevation
K.B. 2012
D.F.
G.L. 2004

Date	5-12-12
Run Number	TWO
Depth Driller	3660
Depth Logger	3659
Bottom Logged Interval	3651
Top Log Interval	1150
Casing Driller	1185
Casing Logger	1185
Bit Size	7.875
Type Fluid in Hole	CHEMICAL MUD
Density / Viscosity	9.3 / 50
pH / Fluid Loss	10.5 / 9.6
Source of Sample	FLOWLINE
Rim @ Meas. Temp	0.50 @ 70F
Rmf @ Meas. Temp	0.38 @ 70F
Rmc @ Meas. Temp	0.60 @ 70F
Source of Rmf / Rmc	MEASURED
Rim @ BHT	0.31 @ 113F
Time Circulation Stopped	2 HOURS
Time Logger on Bottom	
Maximum Recorded Temperature	113F
Equipment Number	860
Location	HAYS, KS.
Recorded By	DAN GOTTSCHALK
Witnessed By	HERB DEINES

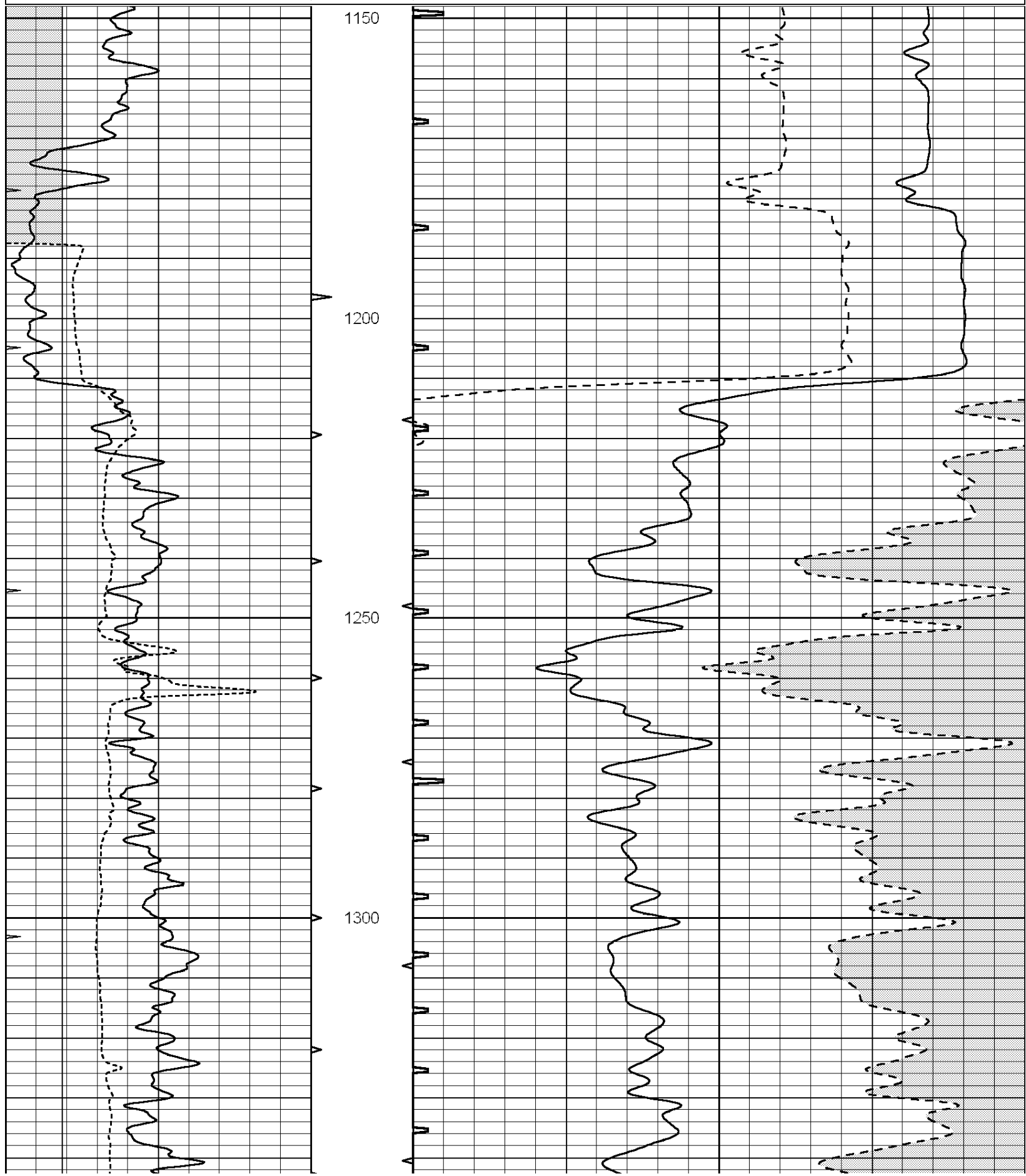
<<< Fold Here >>>

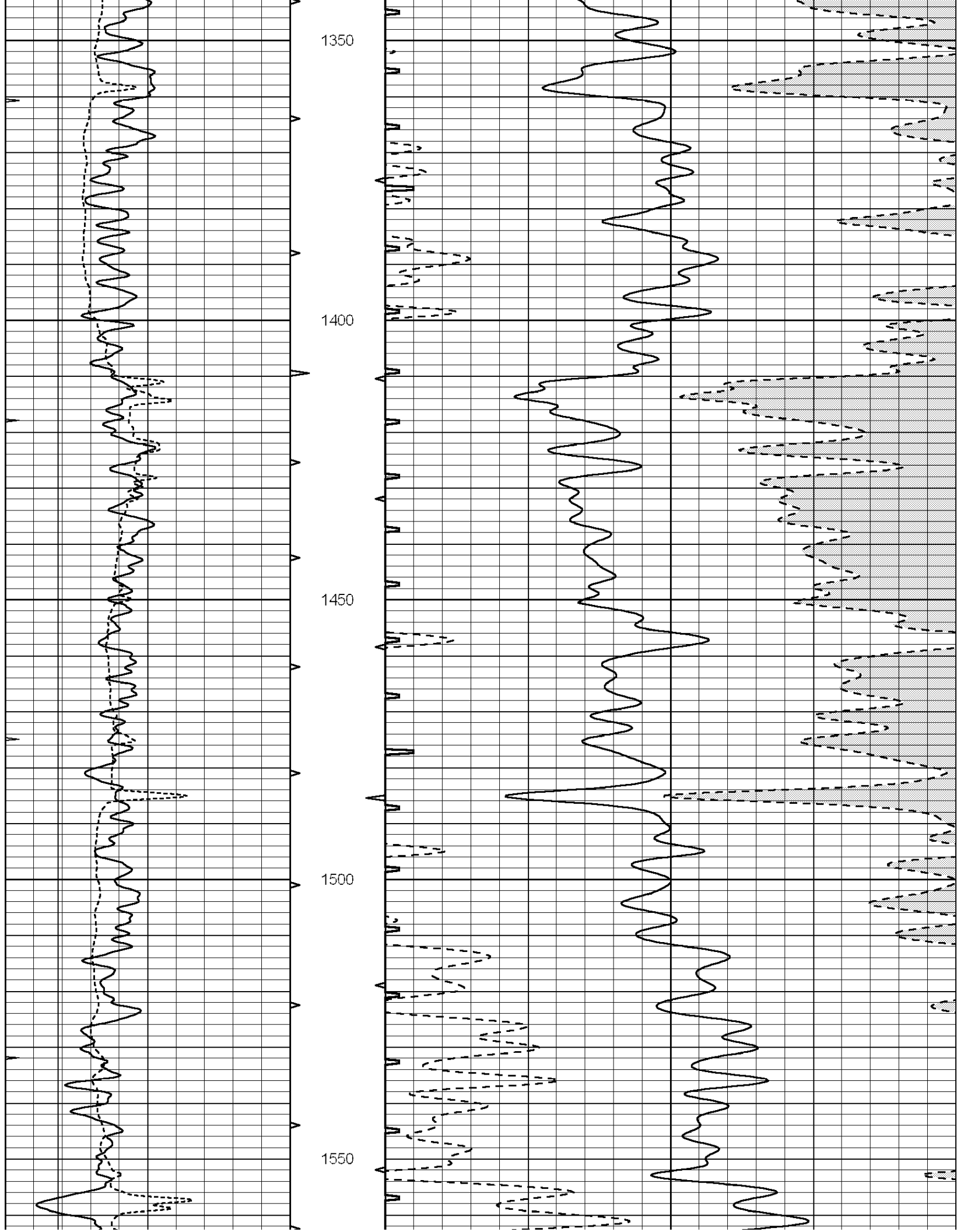
All interpretations are opinions based on inferences from electrical or other measurements and we cannot and do not guarantee the accuracy or correctness of any interpretation, and we shall not, except in the case of gross or willful negligence on our part, be liable or responsible for any loss, costs, damages, or expenses incurred or sustained by anyone resulting from any interpretation made by any of our officers, agents or employees. These interpretations are also subject to our general terms and conditions set out in our current Price Schedule.

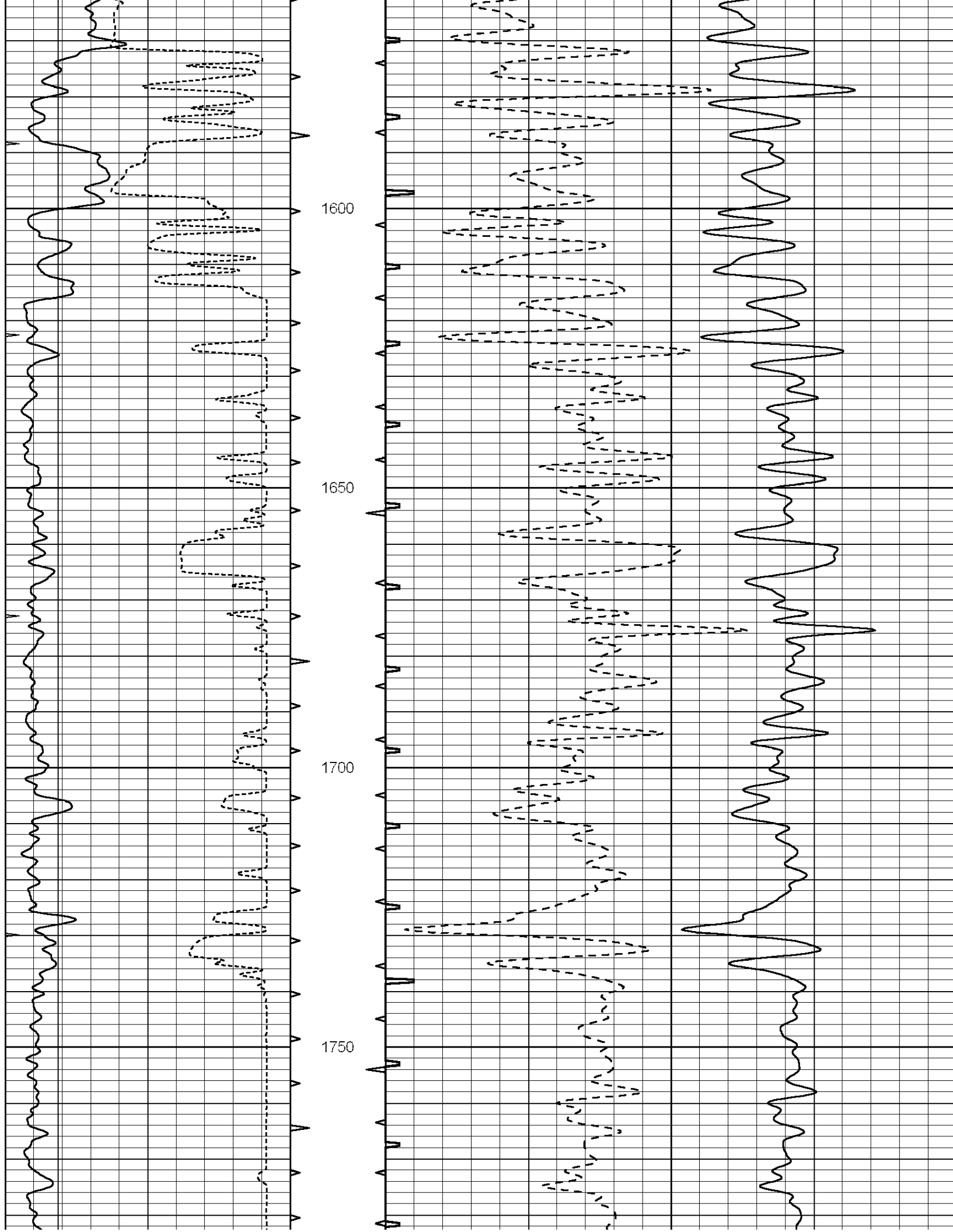
Comments

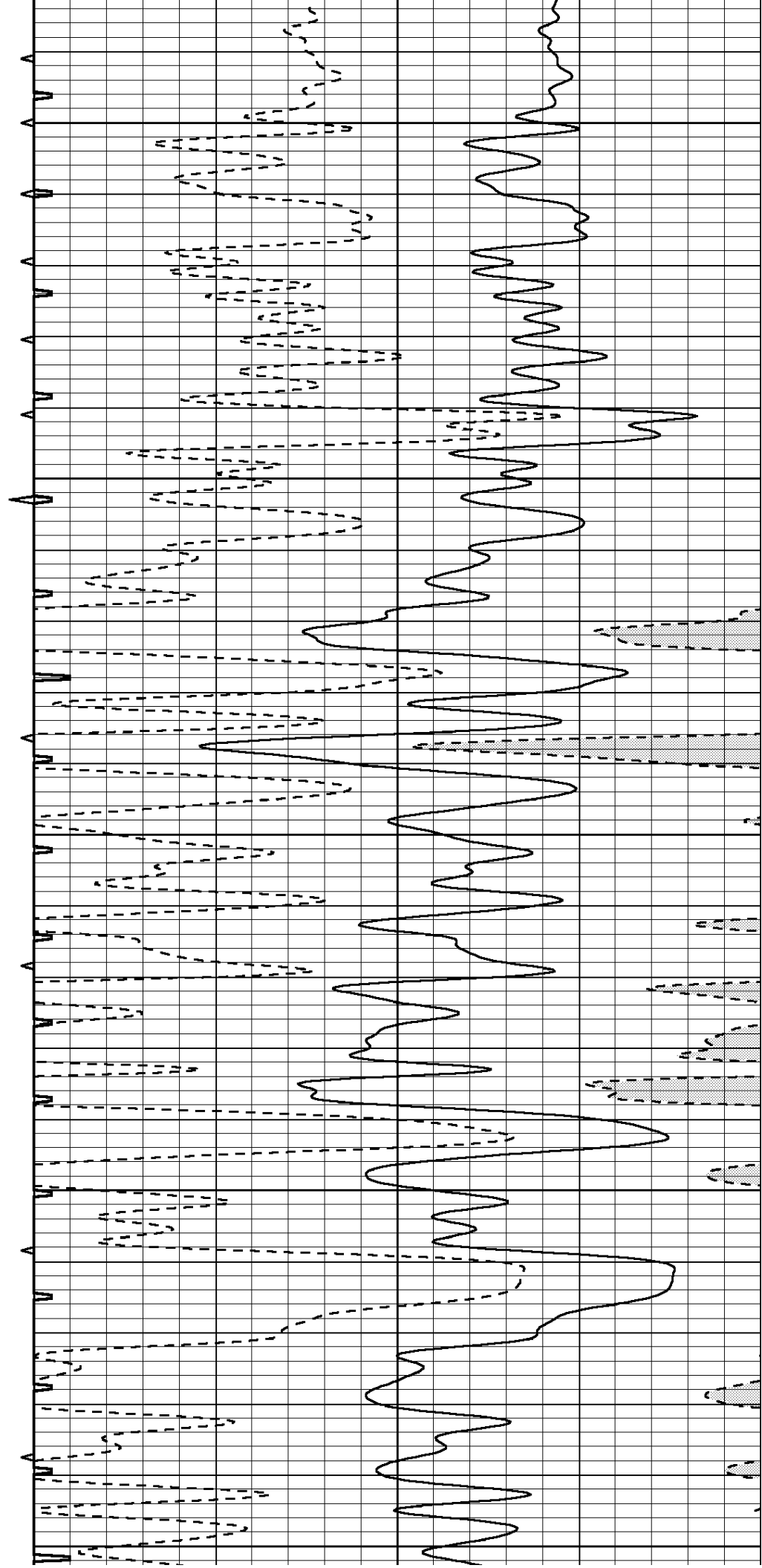
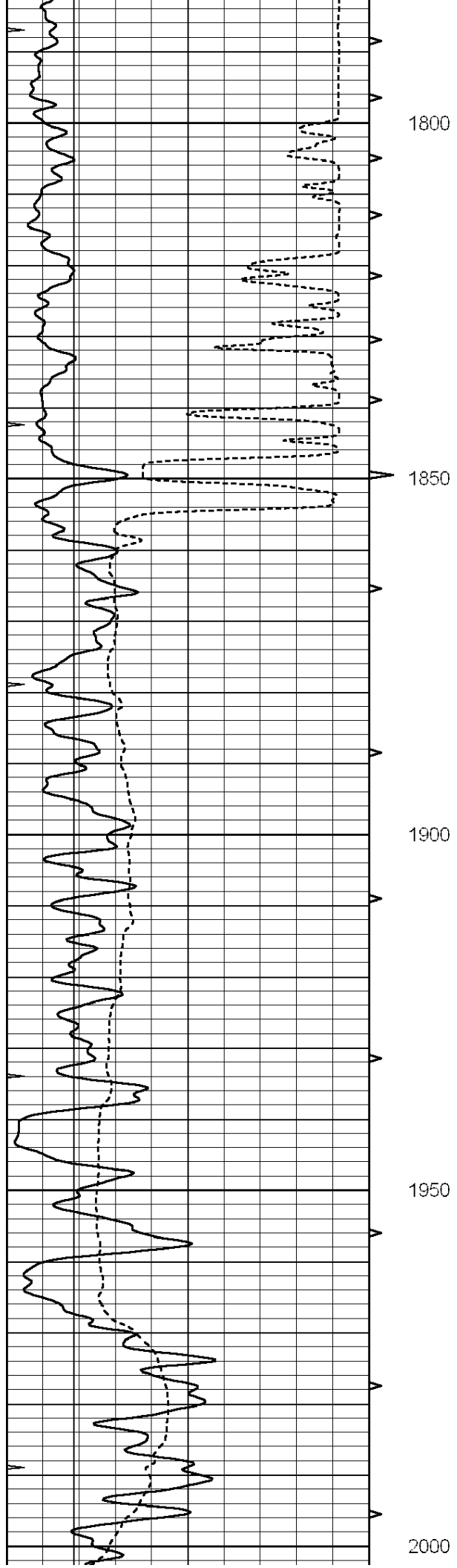
THANK YOU FOR USING SUPERIOR WELL SERVICES, INC.
HAYS, KS. 785-628-6395
DIRECTIONS: HWY 183 & THE RUSH / ELLIS COUNTY LINE - 2 WEST - SOUTH INTO

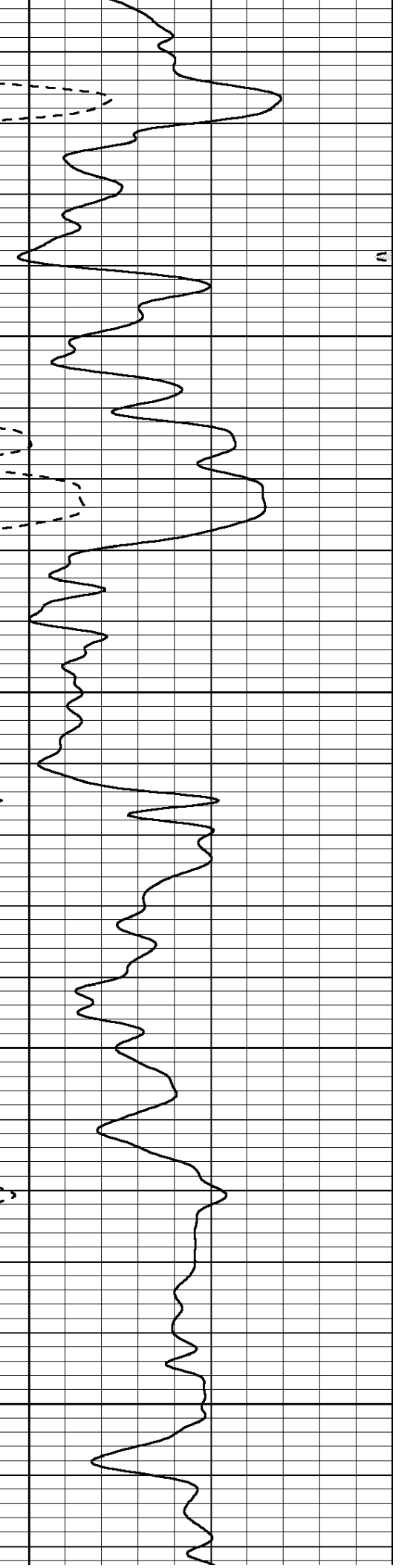
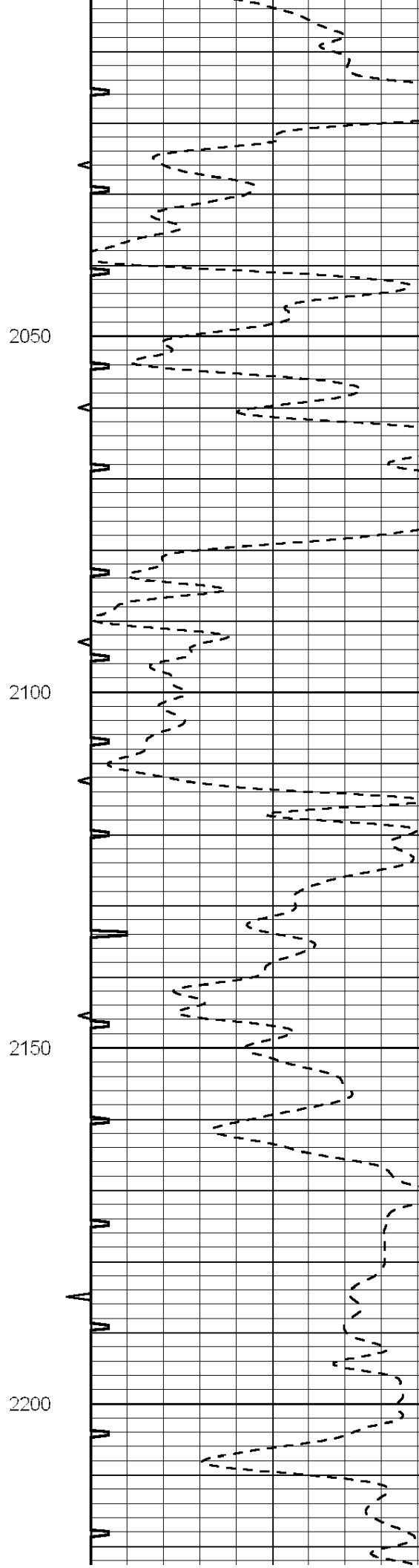
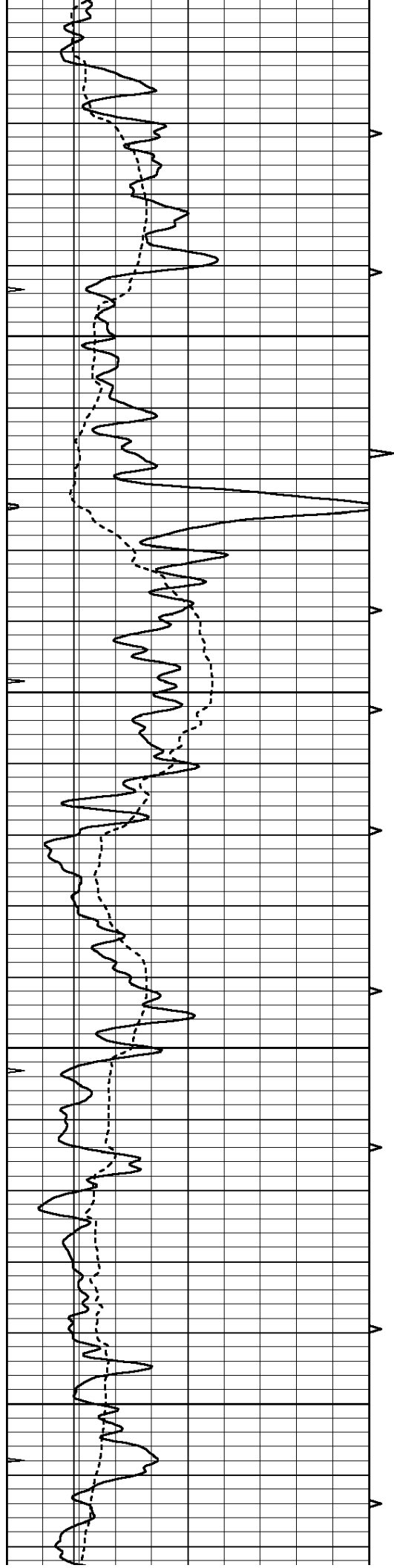
0	GAMMA RAY (GAPI)	150	ABHV	140	DELTA TIME (usec/ft)	40
6	MELCAL (in)	16	10 (ft3)	0 30	SONIC POROSITY (pu)	-10
0	MINMK	20	TBHV	0	ITT (msec)	20
			0 (ft3)	10		

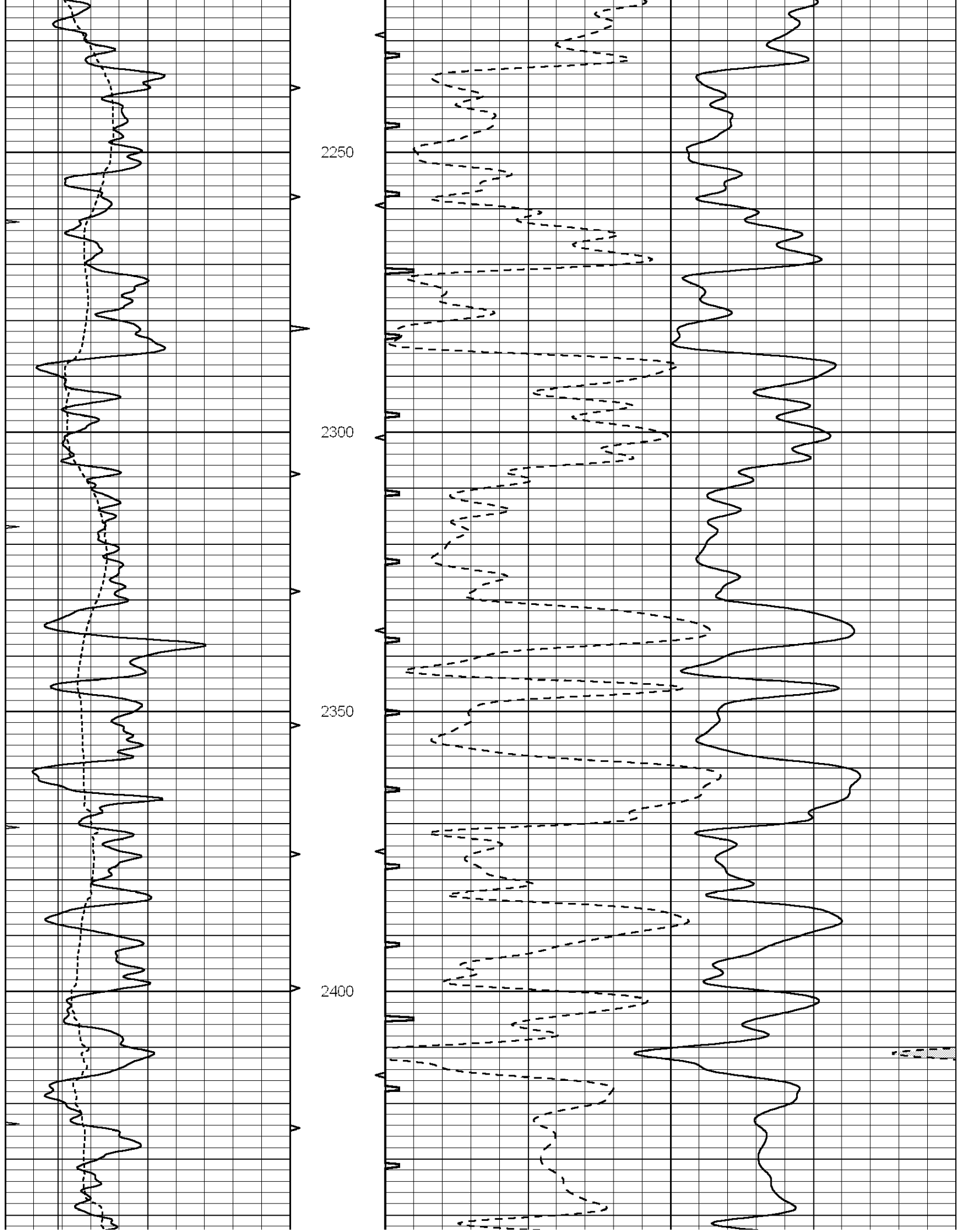


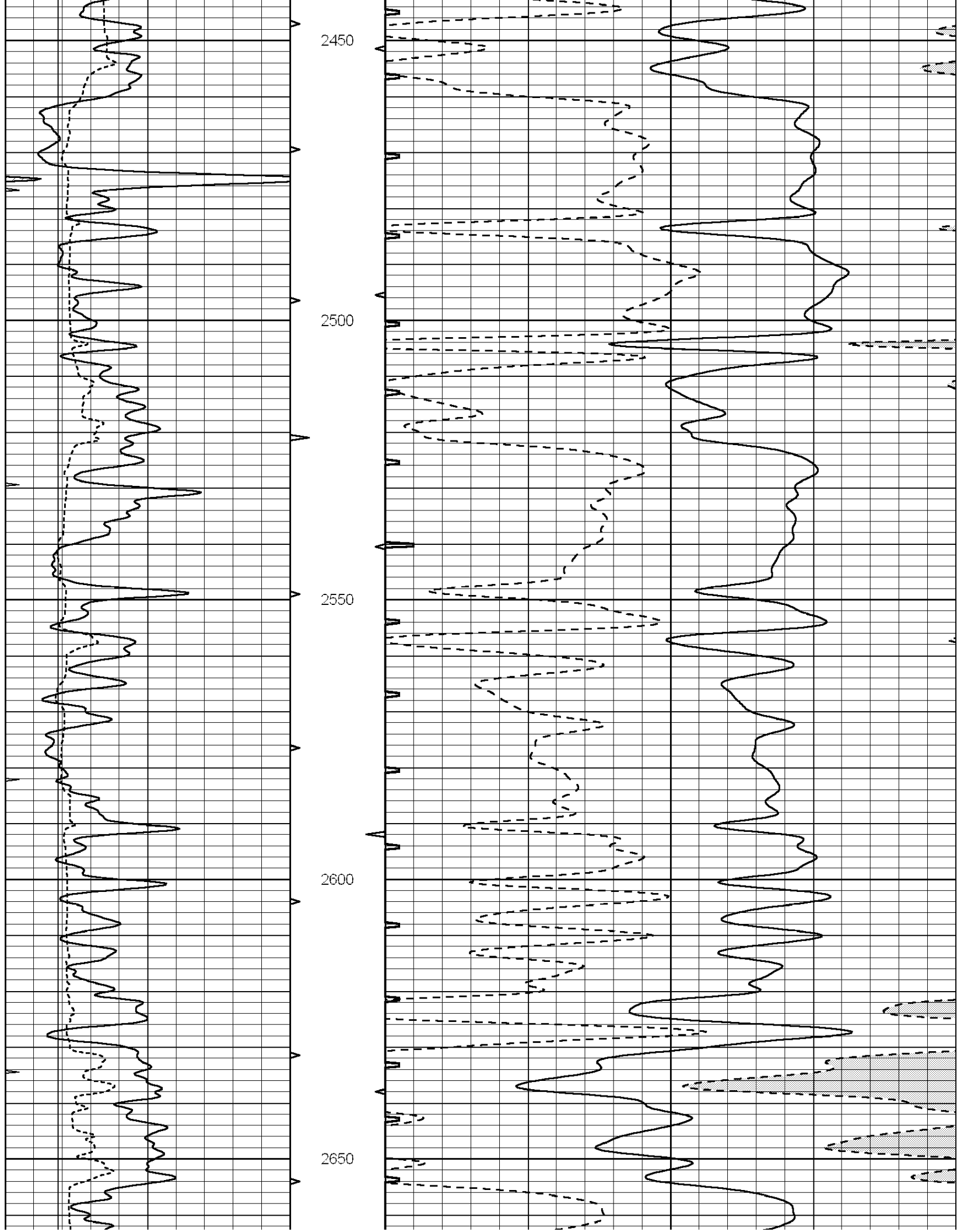


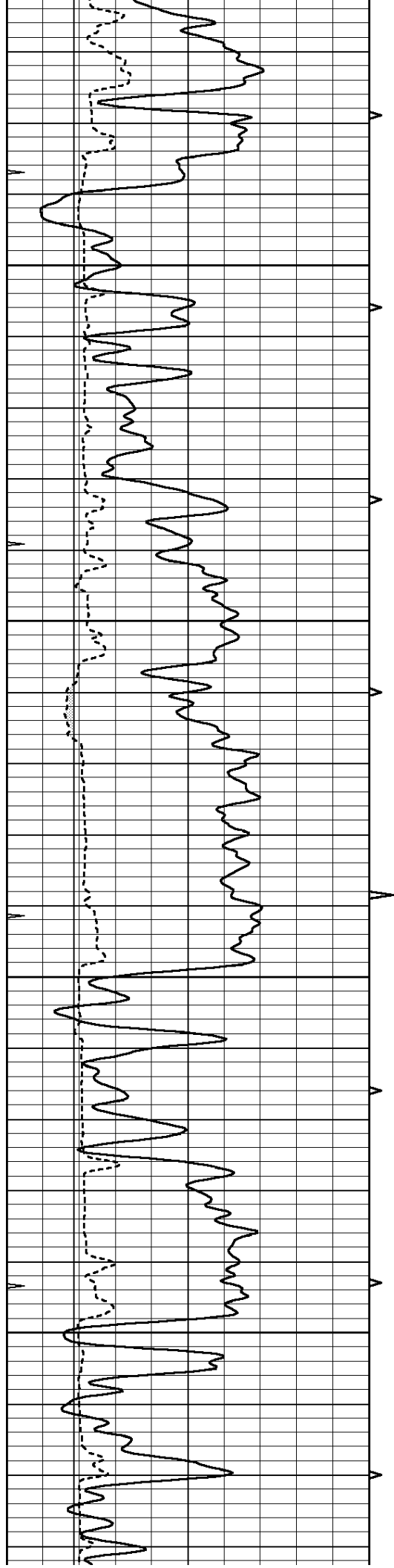










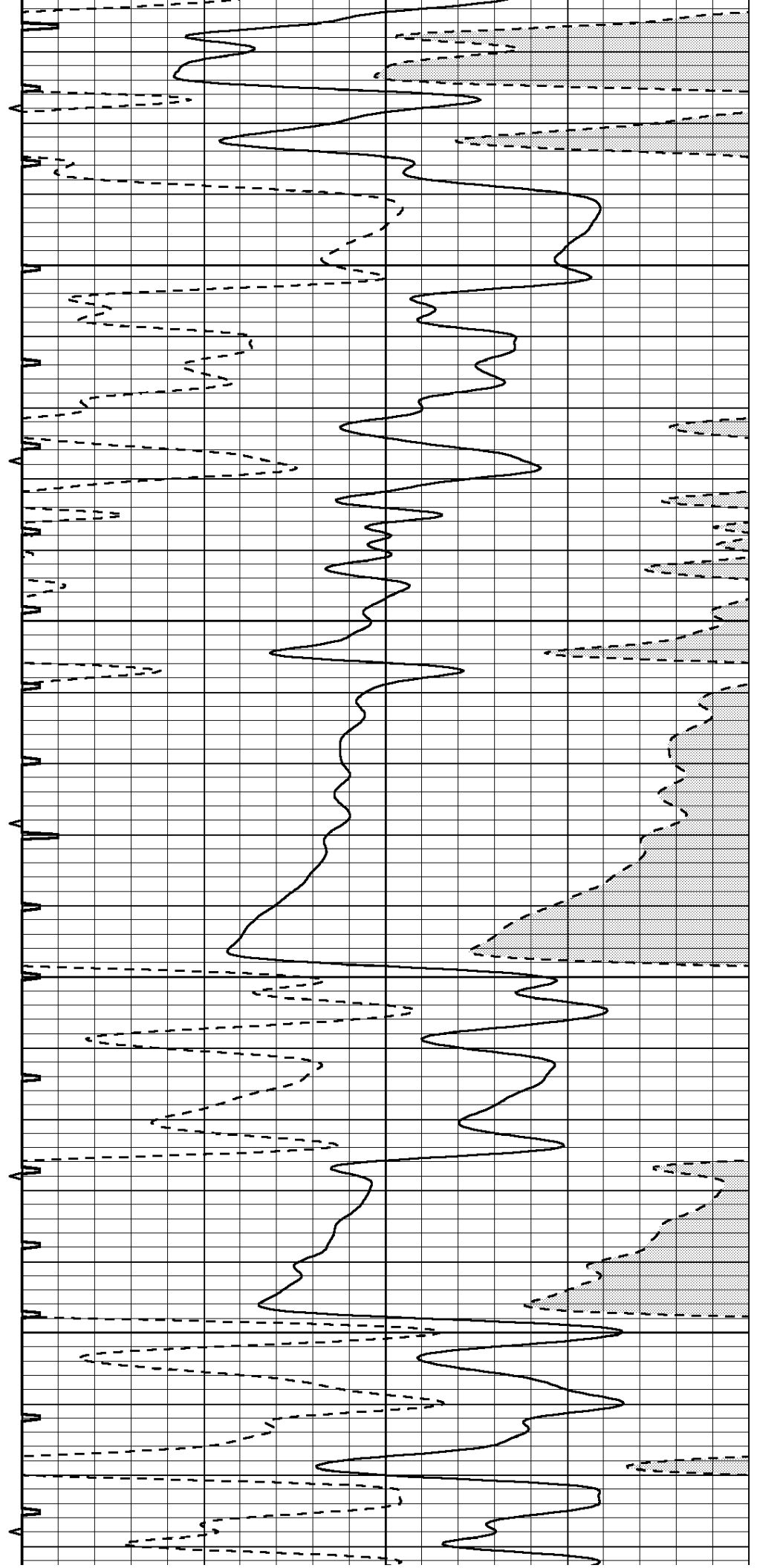


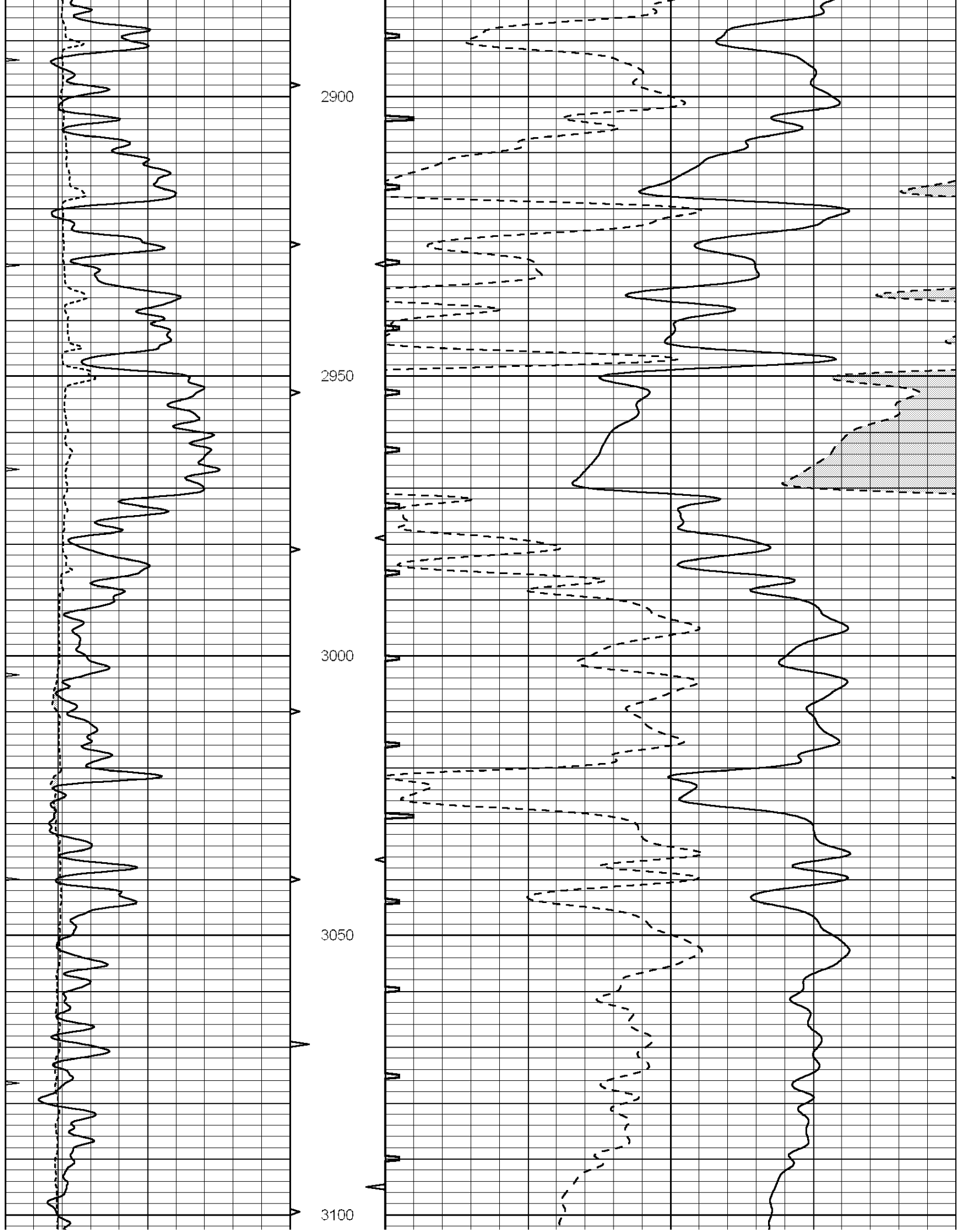
2700

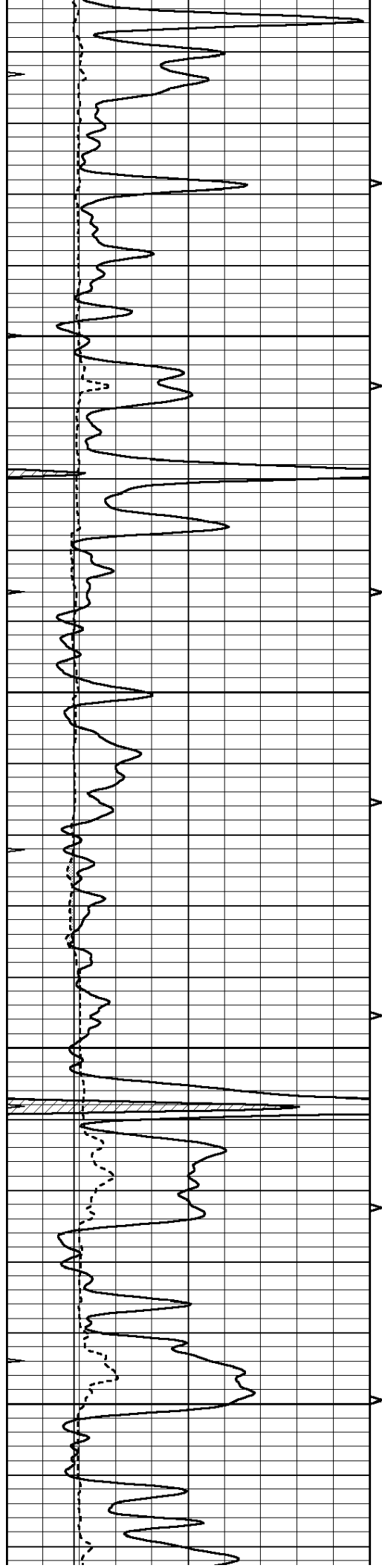
2750

2800

2850





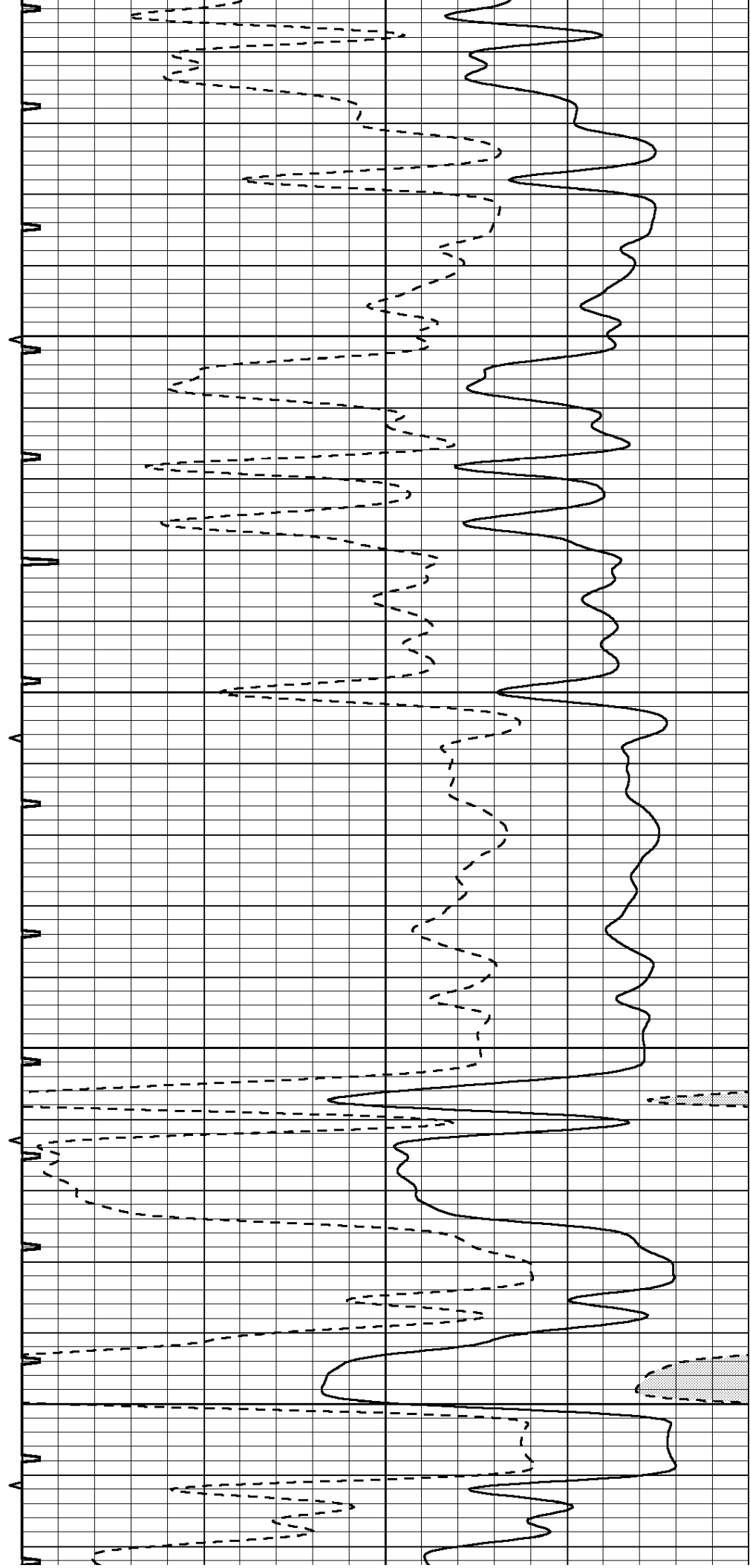


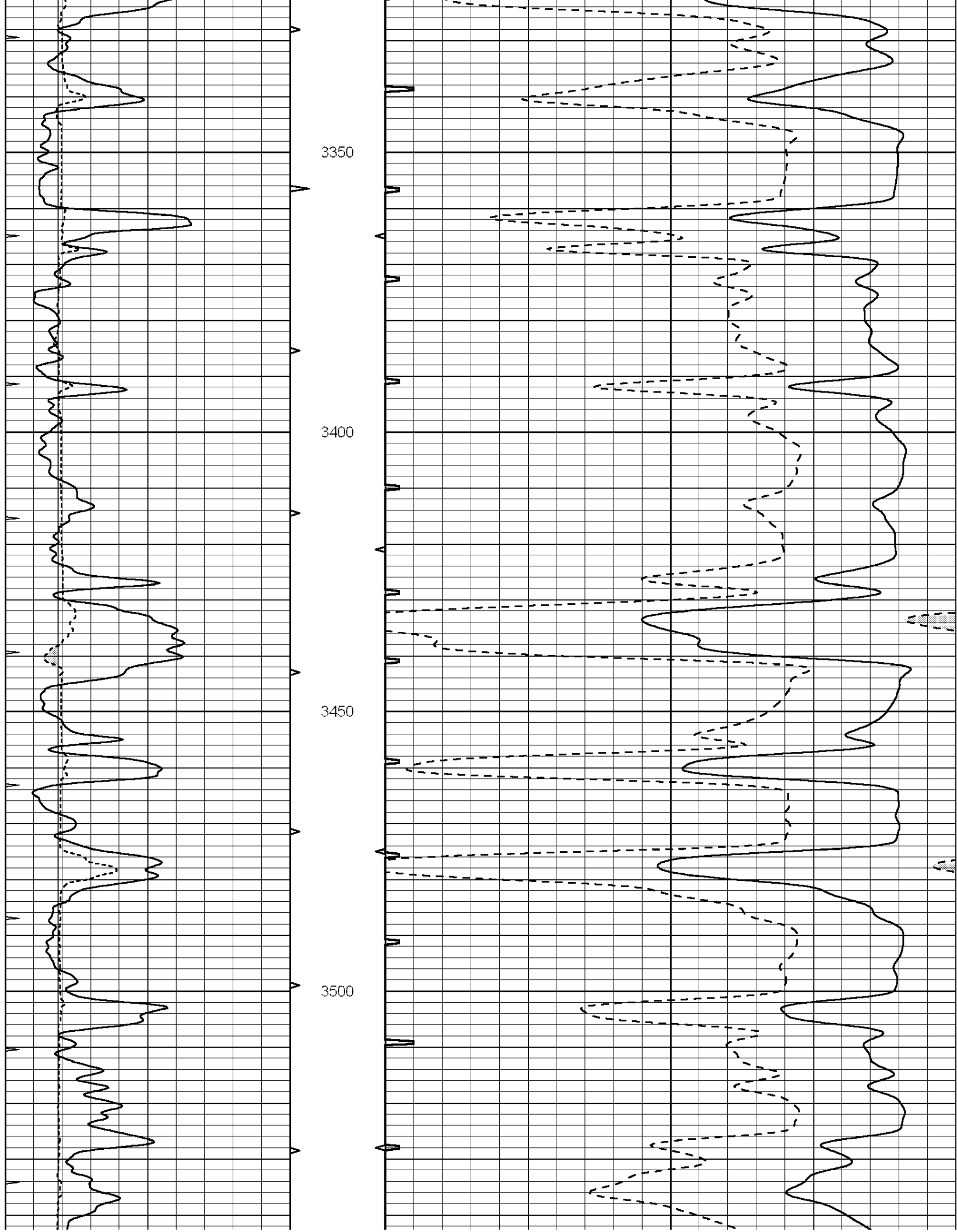
3150

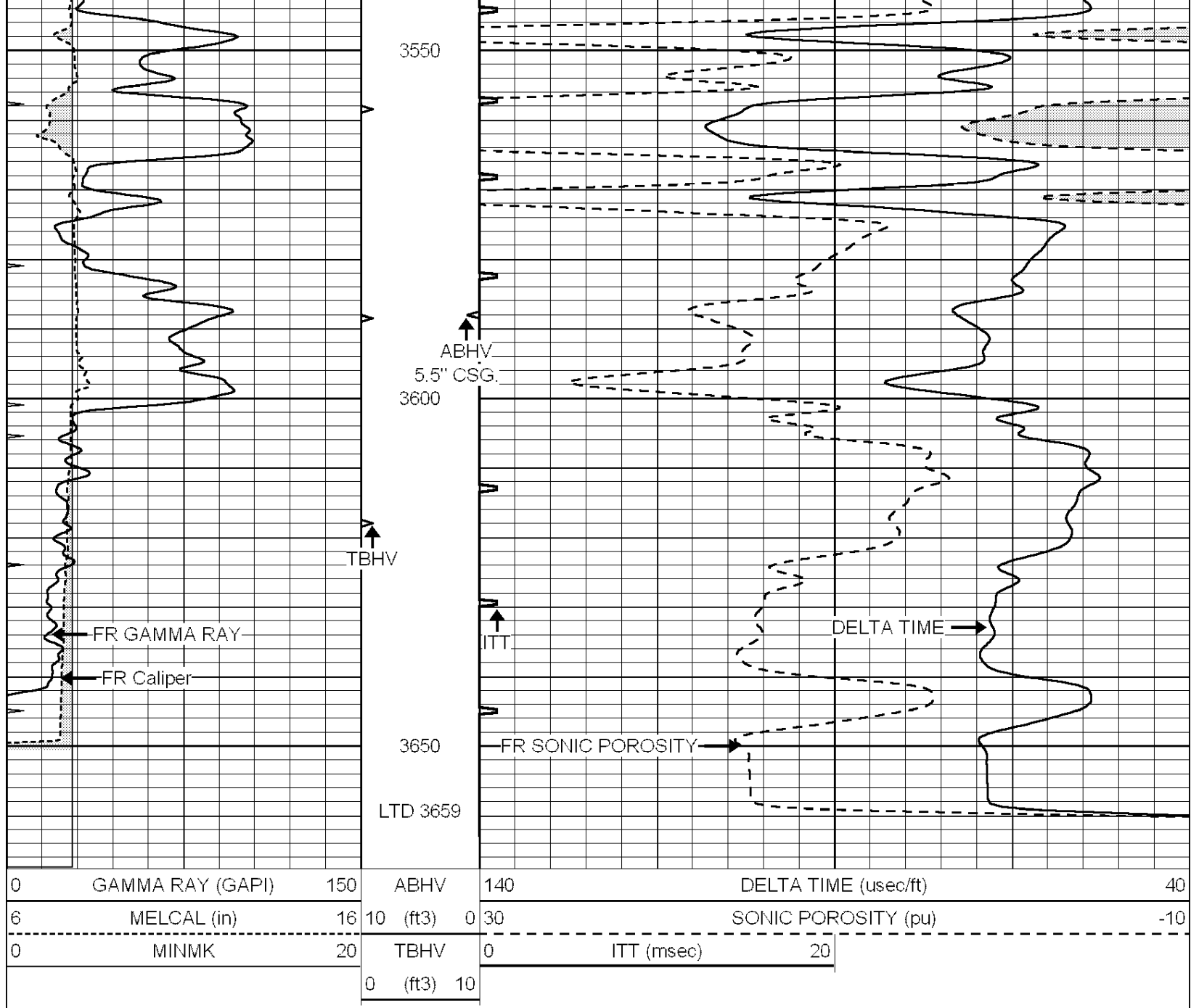
3200

3250

3300







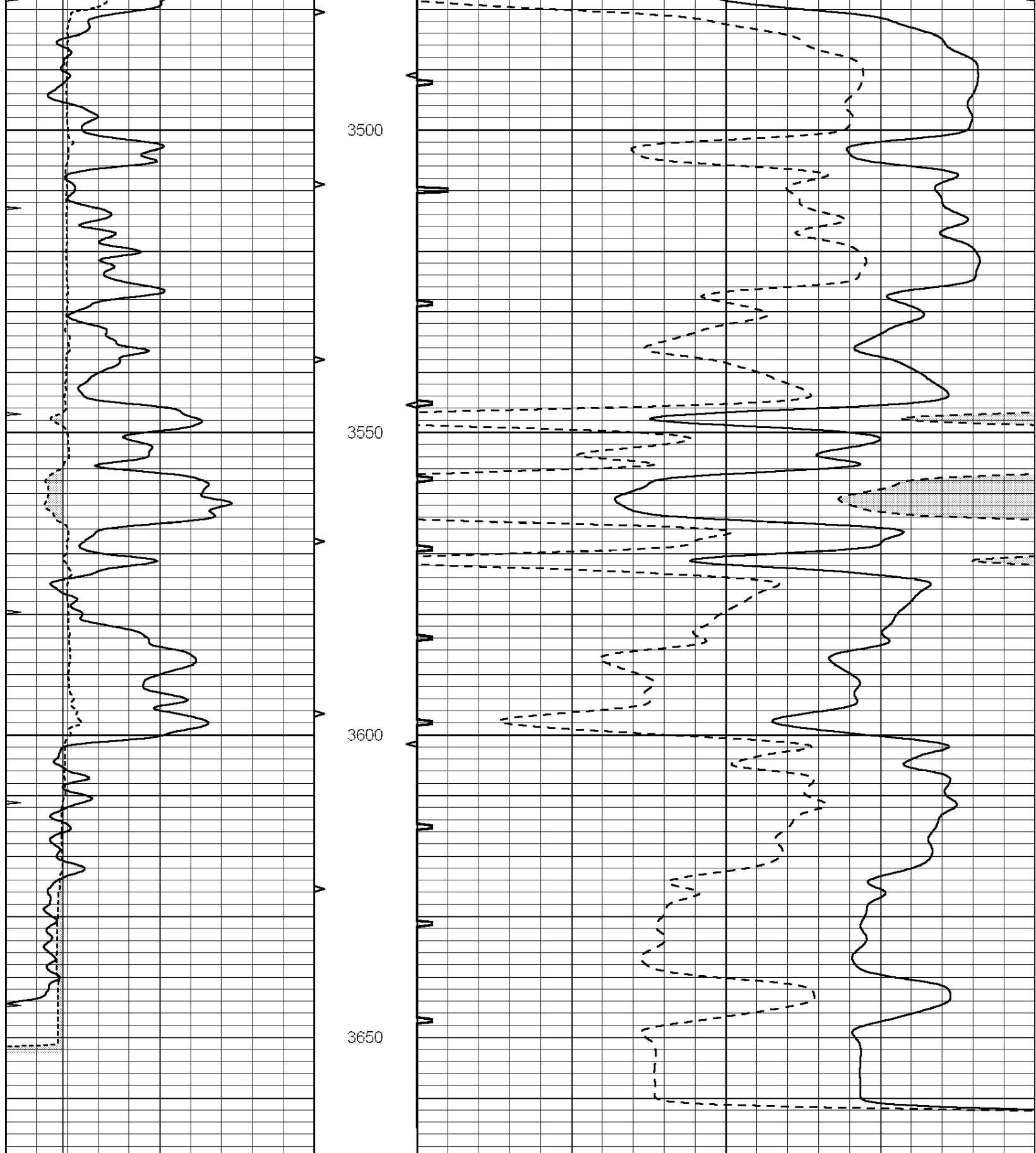
SUPERIOR
Hays,
Kansas

REPEAT SECTION

Database File: 9177ddh.db
 Dataset Pathname: pass6
 Presentation Format: slt
 Dataset Creation: Sat May 12 09:29:57 2012 by Log Open-Cased 090629
 Charted by: Depth in Feet scaled 1:240

0	GAMMA RAY (GAPI)	150	ABHV	140	DELTA TIME (usec/ft)	40
6	MELCAL (in)	16	10 (ft3) 0	30	SONIC POROSITY (pu)	-10
0	MINMK	20	TBHV	0	ITT (msec)	20
			0 (ft3) 10			





0	GAMMA RAY (GAPI)	150	ABHV	140	DELTA TIME (usec/ft)	40
6	MELCAL (in)	16	10 (ft ³)	0 30	SONIC POROSITY (pu)	-10
0	MINMK	20	TBHV	0	ITT (msec)	20
			0 (ft ³)	10		