



MIDWEST SURVEYS
LOGGING - PERFORATING - CONSULTING SERVICES
P.O. Box 88, Osawatomie, KS 68064
913 / 736 - 2128

GAMMA RAY / NEUTRON / CCL

File No.

Company **ST Petroleum, Inc.**
Well **Thomas "A" No. 1-12**
Field **Gardner South**
County **Johnson** State **Kansas**

Location **3630' FSL & 1275' FEL**
W/2-NW-SE-NE

Other Services
Perforate

Sec. **29** Twp. **14S** Rge. **22E**
Permanent Datum **GL** Elevation **NA**
Log Measured From **GL** K.B. **NA**
Drilling Measured From **GL** D.F. **NA**
G.L. **NA**

Date **01-31-2012**
Run Number **One**
Depth Logger **943.0**
Bottom Logged Interval **925.8**
Top Log Interval **20.0**
Fluid Level **Full**

Type Fluid **Water**
Density / Viscosity **NA**
Salinity - PPM Cl **NA**

Max Recorded Temp **NA**
Estimated Cement Top **0.0**
Equipment No. **107** Location **Osawatomie**
Recorded By **Steve Vindisch**
Witnessed By **Rick Singleton**

BORE-HOLE RECORD
R/N
No. **BIT** FROM **TO** SIZE **WGHT** FROM **TO**
One **9.875"** **0.0** **7.00"** **0.0** **20.0**
Two **5.625"** **20.0** **943.0** **2.875"** **0.0** **938.0**
5.625" **943.0** **2.875"** **0.0** **938.0**

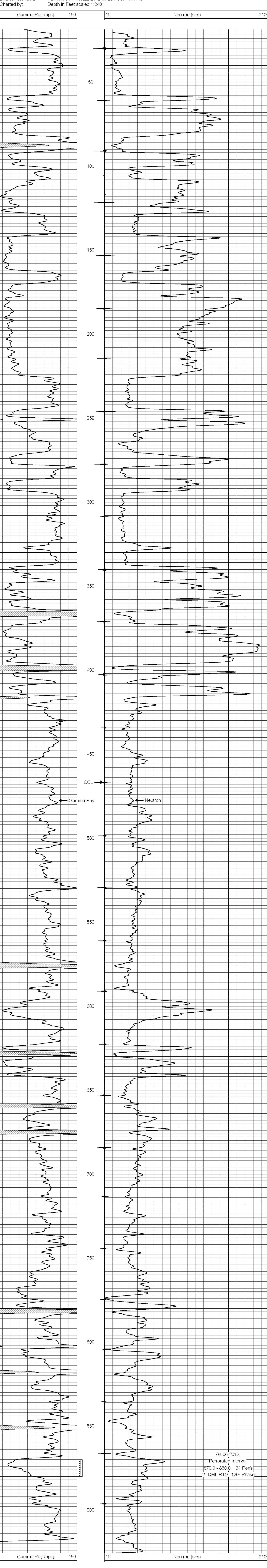
<<< Fold Here >>>

All interpretations are opinions based on inferences from electrical or other measurements and we cannot and do not guarantee the accuracy or correctness of any interpretation, and we shall not, except in the case of gross or willful negligence on our part, be liable or responsible for any loss, costs, damages, or expenses incurred or sustained by anyone resulting from any interpretation made by any of our officers, agents or employees. These interpretations are also subject to our general terms and conditions set out in our current Price Schedule.

Comments

Drilling Contractor :
Hat Drilling Company

Database File: thoms12ia.db
Dataset Pathname: pass1
Presentation Format: gr-n-ccl
Dataset Creation: Tue Jan 31 14:36:22 2012 by Log SCH 111116
Charted by: Depth in Feet scaled 1:240



04-06-2012
Perforated Interval
870.0 - 880.0 31 Perfs
2" DML RTG 120° Phase