



SUPERIOR
Hays,
Kansas

MICRO
LOG

Company PALOMINO PETROLEUM, INC.
Well K & J #1
Field NESS CITY SOUTHWEST
County NESS
State KANSAS

Company PALOMINO PETROLEUM, INC.
Well K & J #1
Field NESS CITY SOUTHWEST
County NESS State KANSAS

Location: API # : 15-135-25388-0000
999' FNL & 1537' FEL
SE - SE - NW - NE
SEC 36 TWP 18S RGE 24W
Permanent Datum GROUND LEVEL Elevation 2234
Log Measured From KELLY BUSHING & A.G.L.
Drilling Measured From KELLY BUSHING
Elevation
K.B. 2242
D.F. 2240
G.L. 2234

Date	5/9/12		
Run Number	TWO		
Depth Driller	4360		
Depth Logger	4355		
Bottom Logged Interval	4353		
Top Log Interval	3500		
Casing Driller	8 5/8" @ 225		
Casing Logger	224		
Bit Size	7 7/8		
Type Fluid in Hole	CHEMICAL MUD	CHLORIDES 5800 PPM	
Density / Viscosity	9.5/42		
pH / Fluid Loss	9.5/11.2		
Source of Sample	FLOWLINE		
Rin @ Meas. Temp	0.47 @ 83F		
Rmf @ Meas. Temp	0.35 @ 83F		
Rmc @ Meas. Temp	0.56 @ 83F		
Source of Rmf / Rmc	MEASURED		
Rin @ BHT	0.33 @ 119F		
Time Circulation Stopped	2 HOURS		
Time Logger on Bottom			
Maximum Recorded Temperature	119F		
Equipment Number	680		
Location	HAYS, KS.		
Recorded By	JEFF GRONEMEG		
Witnessed By	RYAN SEIB		

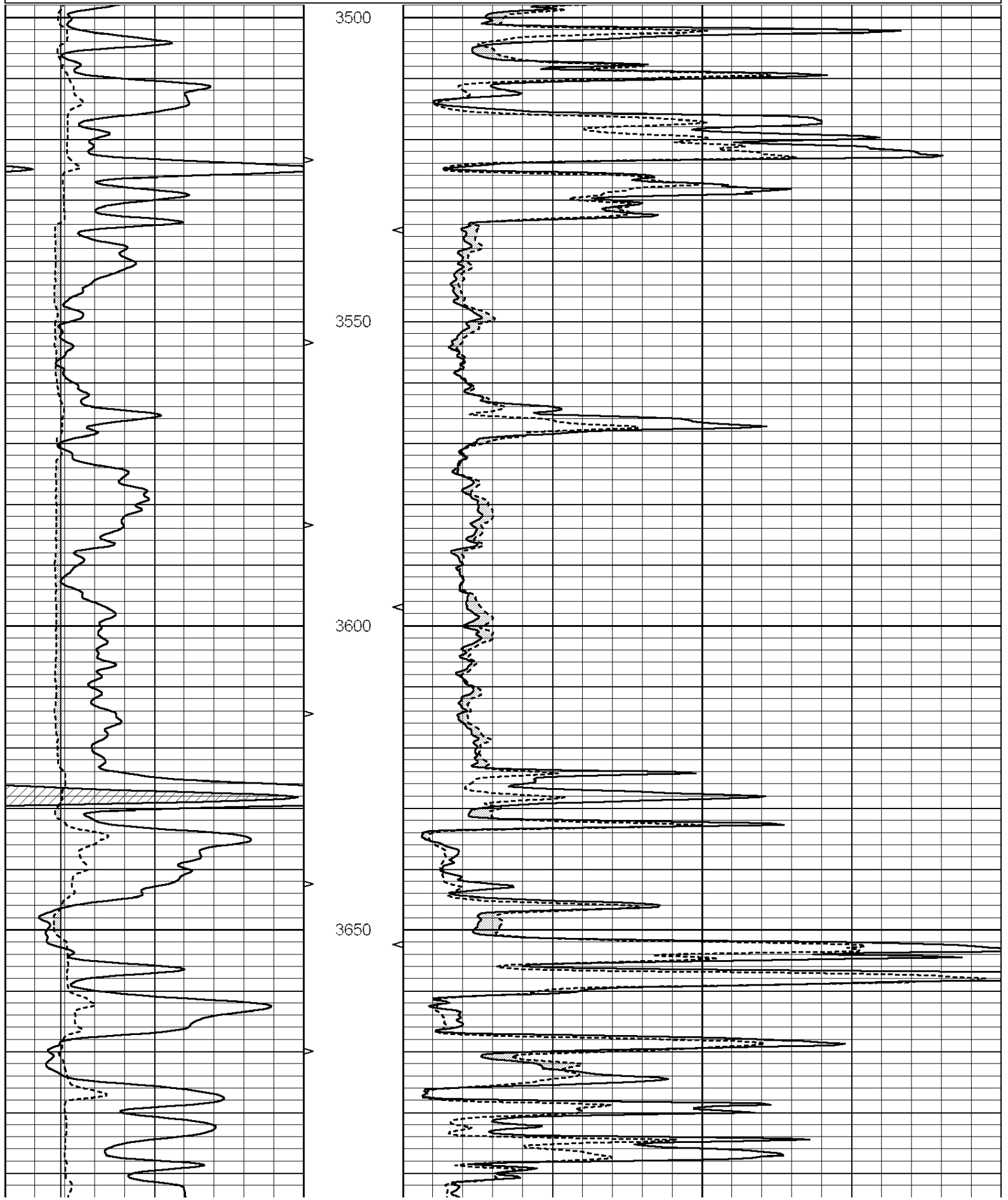
<<< Fold Here >>>

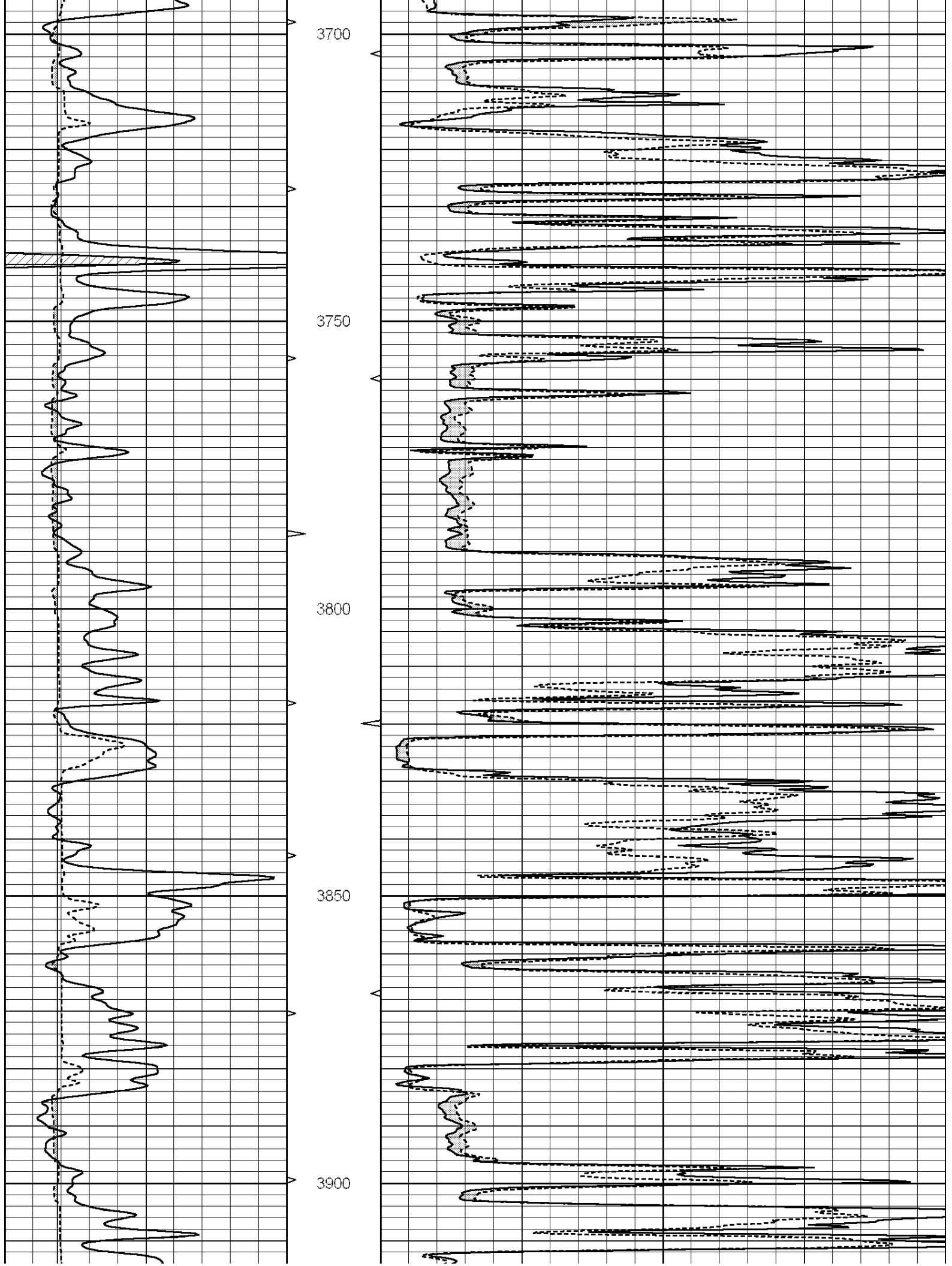
All interpretations are opinions based on inferences from electrical or other measurements and we cannot and do not guarantee the accuracy or correctness of any interpretation, and we shall not, except in the case of gross or willful negligence on our part, be liable or responsible for any loss, costs, damages, or expenses incurred or sustained by anyone resulting from any interpretation made by any of our officers, agents or employees. These interpretations are also subject to our general terms and conditions set out in our current Price Schedule.

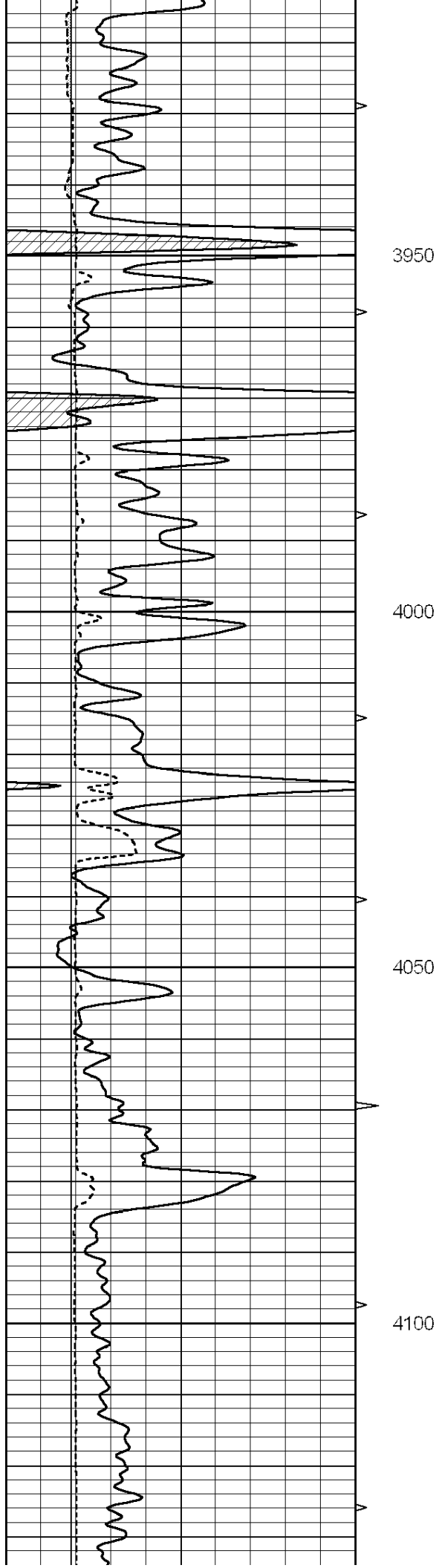
Comments

THANK YOU FOR USING SUPERIOR WELL SERVICE (785) 628-6395
DIRECTIONS
NESS CITY, KS - WEST OVER BRIDGE - SOUTH ON ROAD RIGHT AFTER BRIDGE
SOUTH INTO THROUGH GATE

0	GAMMA RAY (GAPI)	150	ABHV	0	MEL1.5 (Ohm-m)	40
6	CALIPER (in)	16	10 (ft3)	0 0	MEL2.0 (Ohm-m)	40
			TBHV			
			0 (ft3)			





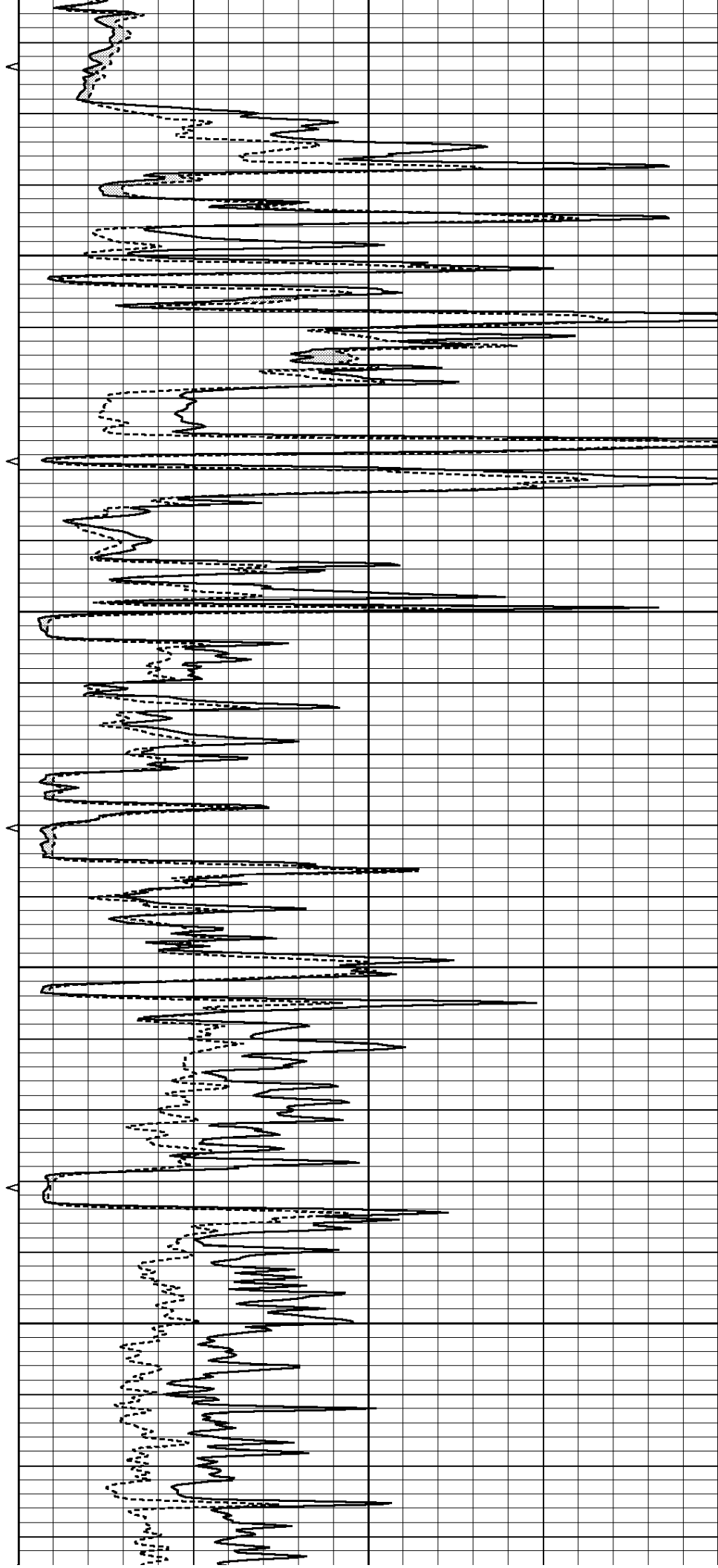


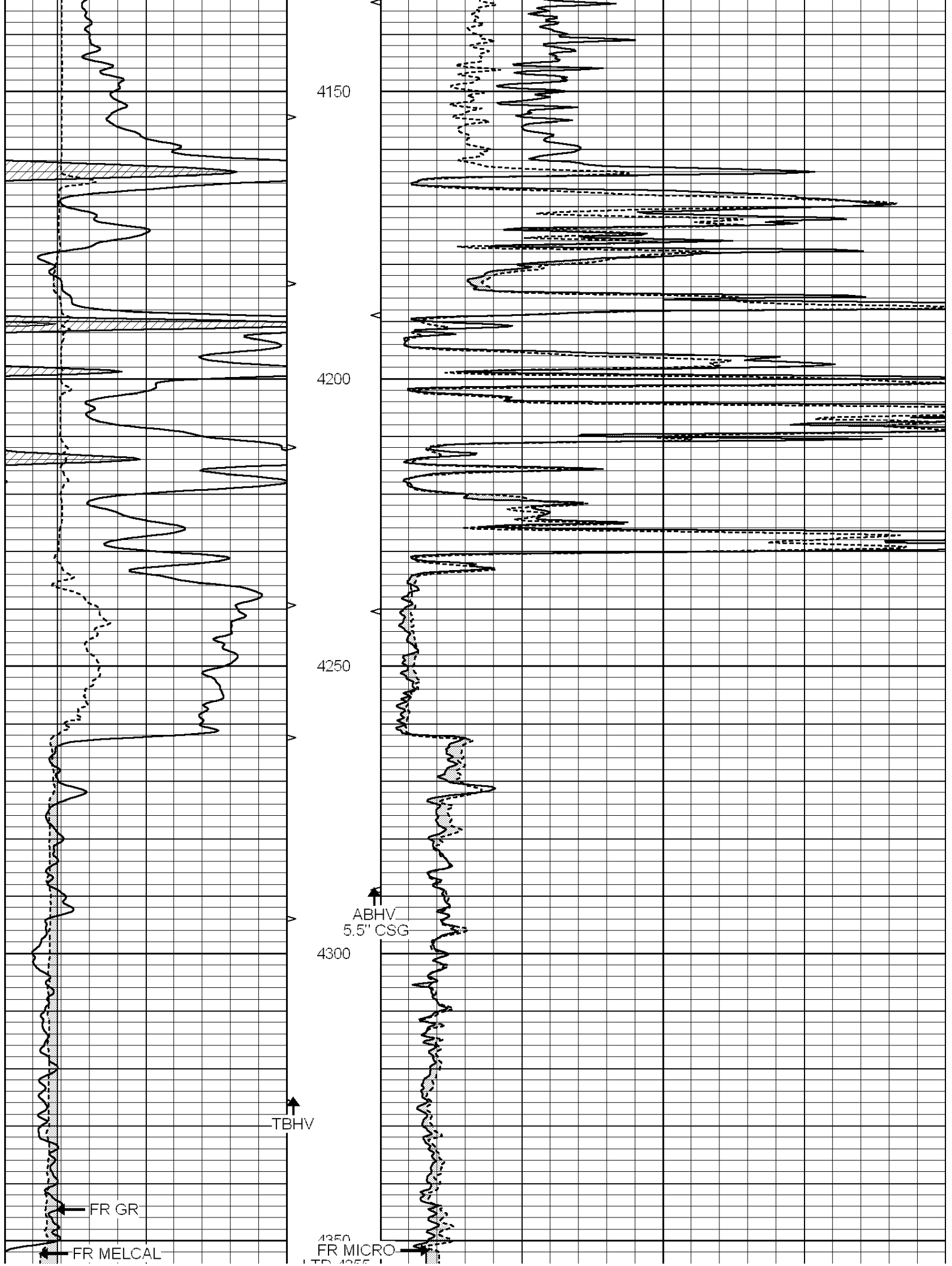
3950

4000

4050

4100





4150

4200

4250

4300

ABHV
5.5" CSG

TBHV

FR GR

FR MELCAL

4250
FR MICRO
TD 4255

LTD 4335

0	GAMMA RAY (GAPI)	150	ABHV	0	MEL1.5 (Ohm-m)	40
6	CALIPER (in)	16	10 (ft3)	0	MEL2.0 (Ohm-m)	40
			TBHV			
			0 (ft3)	10		

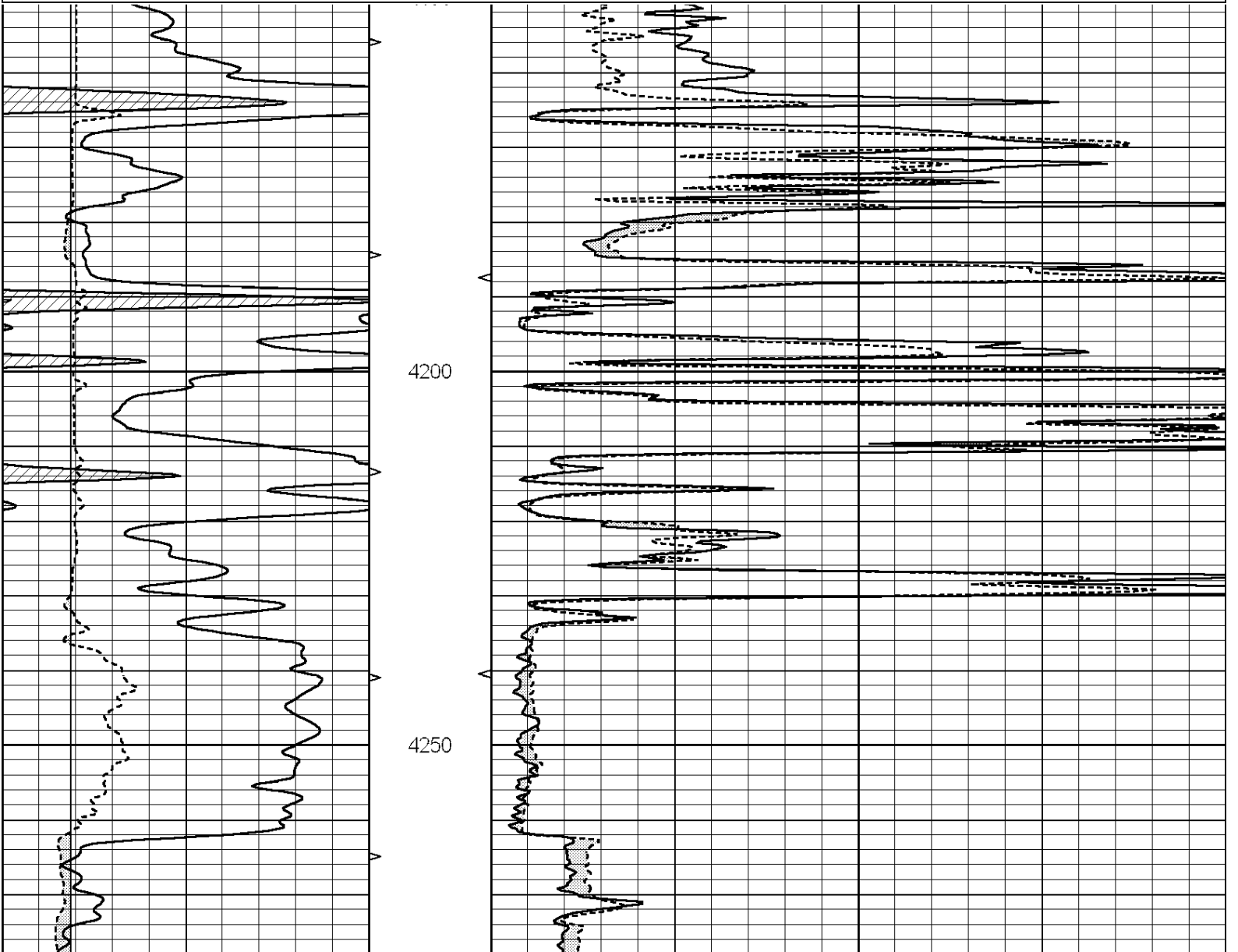


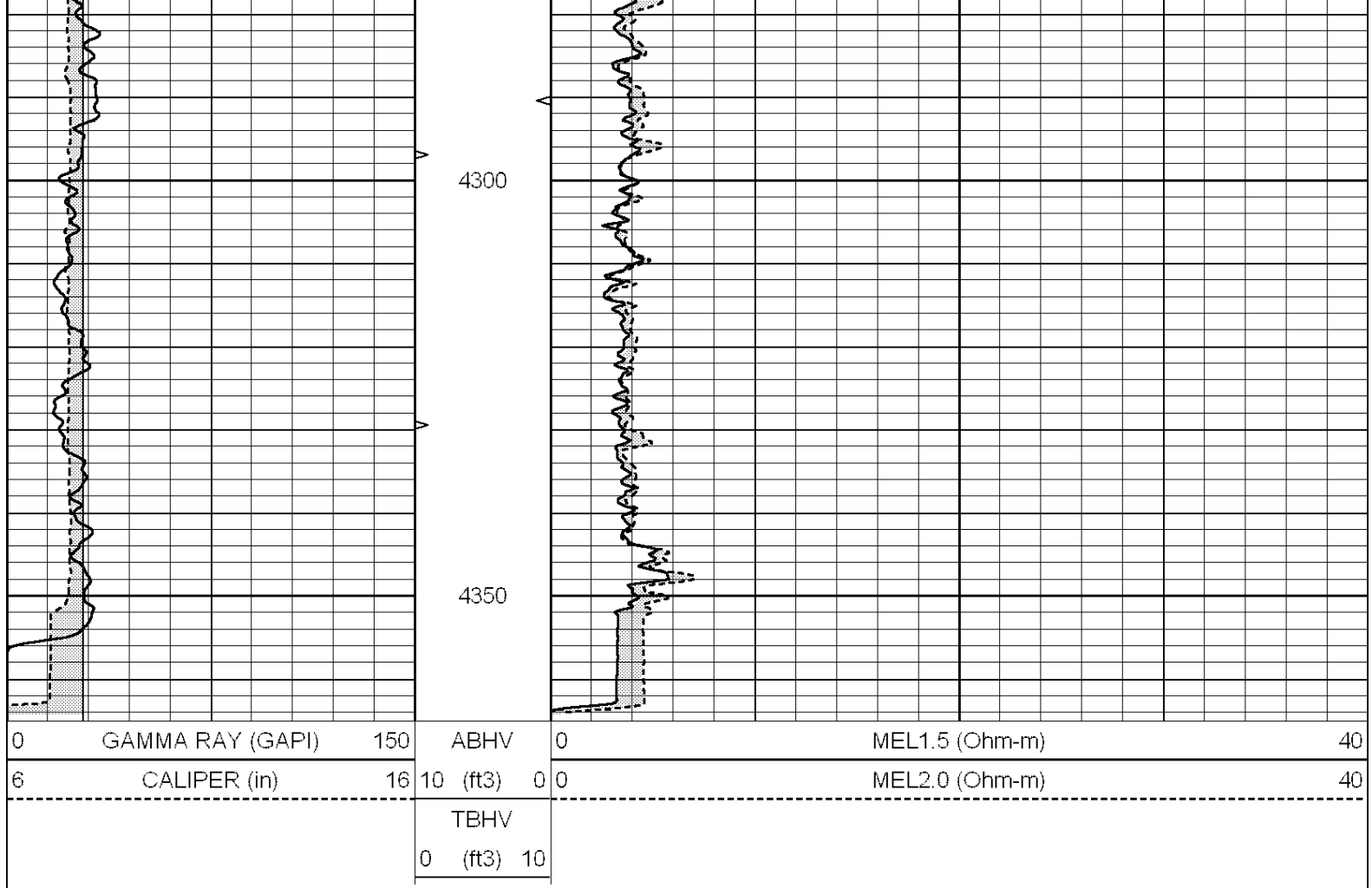
SUPERIOR
Hays,
Kansas

REPEAT SECTION

Database File: 009065ddn.db
 Dataset Pathname: pass4.3
 Presentation Format: _micro
 Dataset Creation: Wed May 09 23:27:26 2012 by Calc Open-Cased 090629
 Charted by: Depth in Feet scaled 1:240

0	GAMMA RAY (GAPI)	150	ABHV	0	MEL1.5 (Ohm-m)	40
6	CALIPER (in)	16	10 (ft3)	0	MEL2.0 (Ohm-m)	40
			TBHV			
			0 (ft3)	10		





Calibration Report

Database File: 009065ddn.db
 Dataset Pathname: pass5.1
 Dataset Creation: Wed May 09 23:25:22 2012 by Calc Open-Cased 090629

MICRO Calibration Report

Serial Number:	MICRO6	
Tool Model:	PROBE	
Performed:	Sat Mar 24 05:25:46 2012	
Caliper Calibration:	Gain=4.253	Offset=1.668
References	Low Cal	High Cal
Readings	5.800	13.000
	1.178	2.330
1.5" Calibration:	Gain=30.075	Offset=-0.200
References	Low Cal	High Cal
Readings	0.000	20.000
	0.004	1.196
2" Calibration:	Gain=27.041	Offset=0.550
References	Low Cal	High Cal
Readings	0.000	20.000
	0.006	0.913

Gamma Ray Calibration Report

Serial Number: #8
 Tool Model: OPEN
 Performed: Mon Jun 12 10:50:42 2011

Performed: Mon Jun 13 16:56:45 2011

Calibrator Value: 150.0 GAPI

Background Reading: 0.0 cps

Calibrator Reading: 175.0 cps

Sensitivity: 0.8371 GAPI/cps