



Sector Bond / Gamma Ray
CCL Log

(785) 625-3858

15-097-21700-00-00

Company **Herman Loeb**
Well **Hardy No.3**
Field **Hardy**
County **Kiowa** State **Kansas**

Location **1980' FNL & 660' FEL**

Other Services
Portable Mast

Sec: **23** Twp: **28S** Rge: **18W**

Elevation

Permanent Datum **Ground Level** Elevation **2220**
Log Measured From **Kelly Bushing** 11 Ft. Above Perm. Datum
Drilling Measured From **Kelly Bushing**

K.B. 2231
D.F. 2230
G.L. 2220

Run Number	One	
Date Survey	8/3/2011	
Date Cementing	7/28/2011	
Type Cementing Operation	Primary	
Depth Driller	4882	
Depth Logger	4845	
Logged Interval	4844 to 3400	to
Casing Driller	5.5 @ TD	@
Float Collar -- D.V. Tool	////	////
Squeeze Depth	////	
Amount & Type Cement	////	
Amount & Type Admix	////	
Type Fluid In Hole	Water	
Fluid Level	Full	
Salinity PPM CL	////	
Weight lb/gal -- Vis.	////	////
Approx. Logged Cement Top	3630	
Calculated Cement Top	////	
Max. Hole Temperature	125	
Tool No.	RBT1-1	
Spacing Recorded	3-5	
Equipment -- Location	13	Hays
Recorded By	S. Chesney	
Witnessed By	George Payne	

<<< Fold Here >>>

All interpretations are opinions based on inferences from electrical or other measurements and we cannot and do not guarantee the accuracy or correctness of any interpretation, and we shall not, except in the case of gross or willful negligence on our part, be liable or responsible for any loss, costs, damages, or expenses incurred or sustained by anyone resulting from any interpretation made by any of our officers, agents or employees. These interpretations are also subject to our general terms and conditions set out in our current Price Schedule.

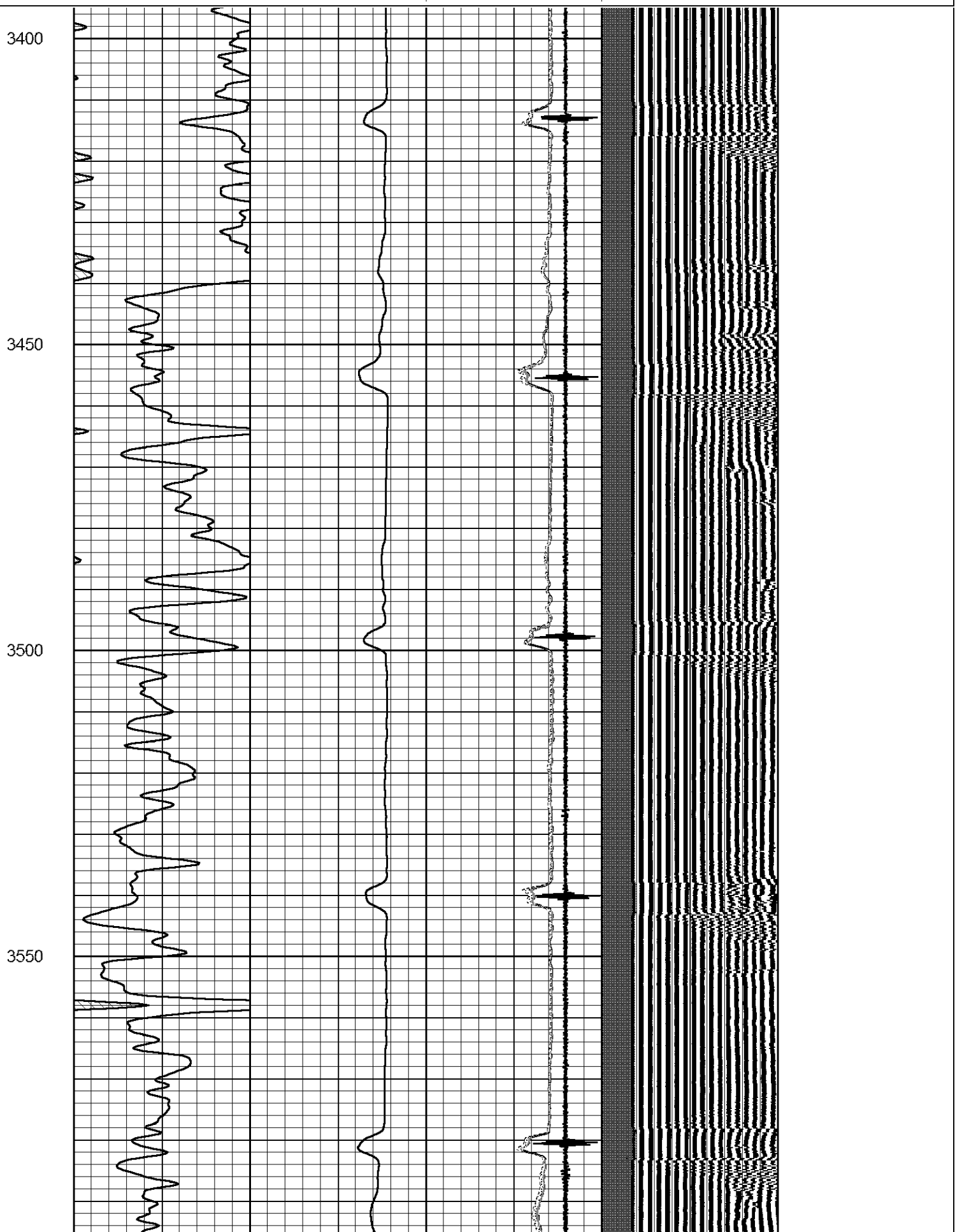
Comments

Thank you for using Log-Tech, Inc.
(785) 625-3858

Greensburge, 2E to 35th Rd, 3/4S,
W into

Database File: herman-loeb.db
Dataset Pathname: sgrcbl/pass3
Presentation Format: scbl
Dataset Creation: Wed Aug 03 07:46:02 2011 by Log SCH 110630
Charted by: Depth in Feet scaled 1:240

0	Gamma Ray	150	0	Amplitude (mV)	100	0	AMPAVG	150	200	VDL	1200	1	Sector Map	8
150	GR	375	Amplified Amplitude	0	AMPMAX	150							25	75
			0	(mV)	20	0	AMPMIN	150						
						7	CCL	-1.8						



3600

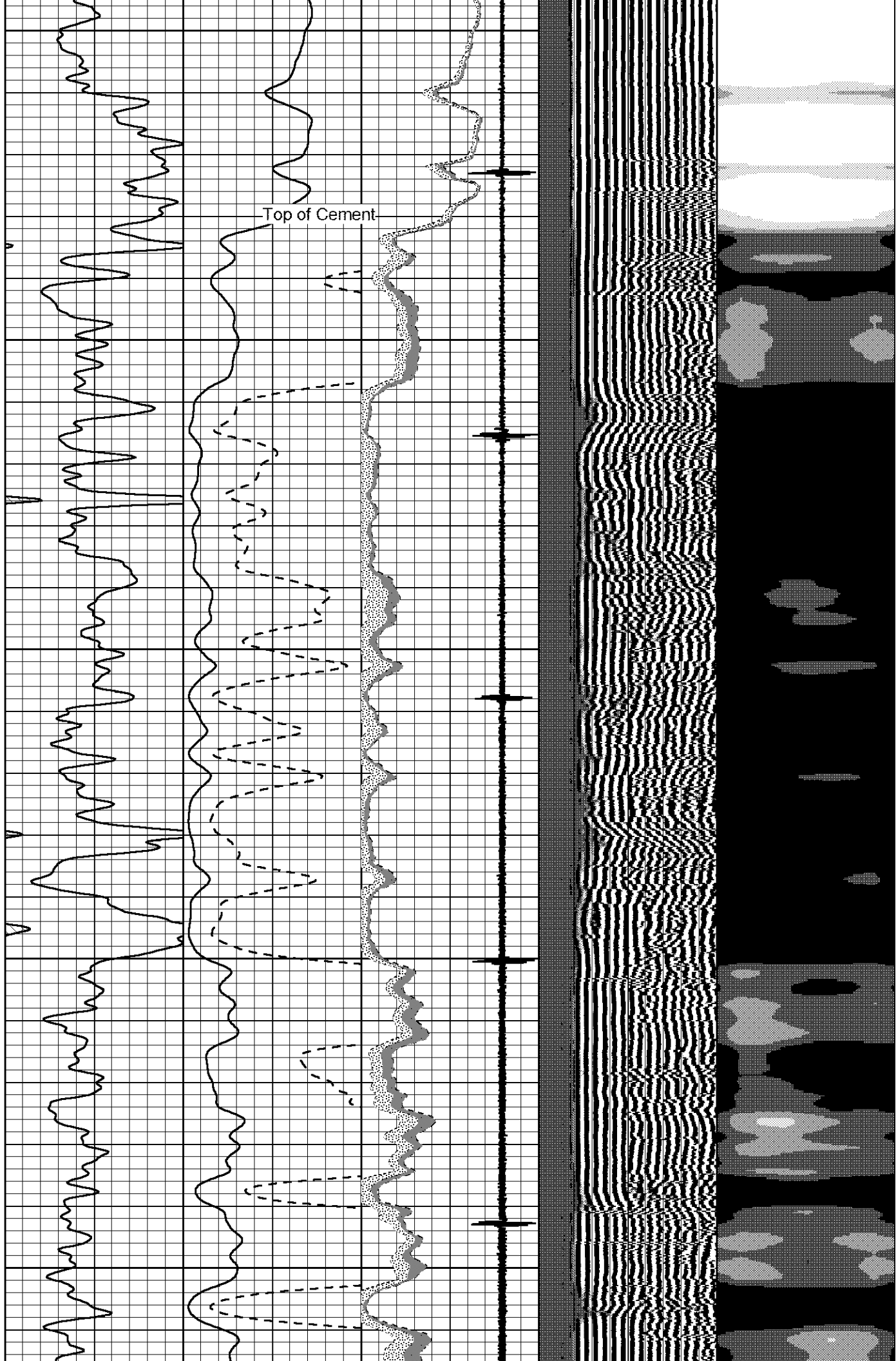
3650

3700

3750

3800

Top of Cement

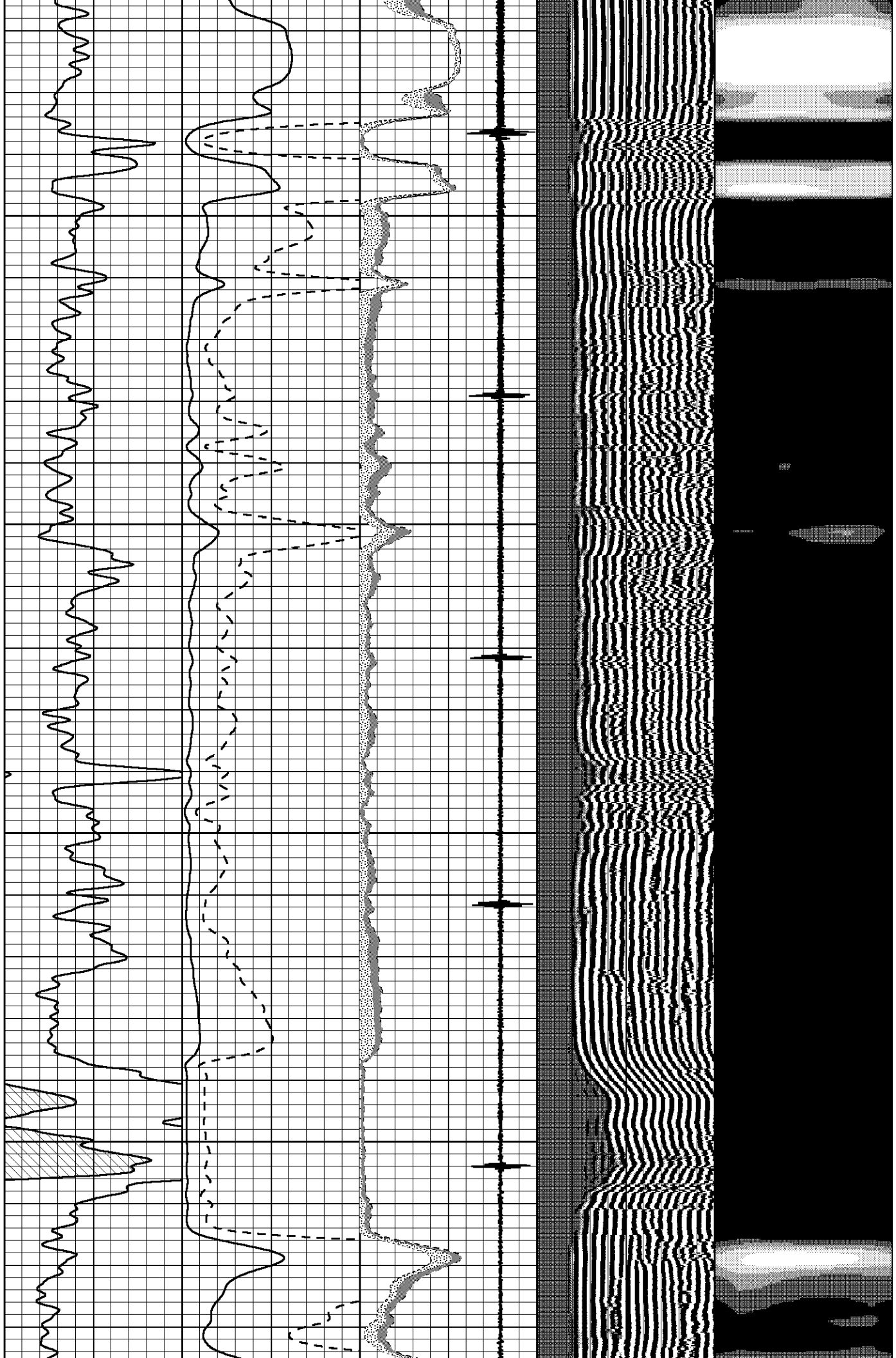


3850

3900

3950

4000



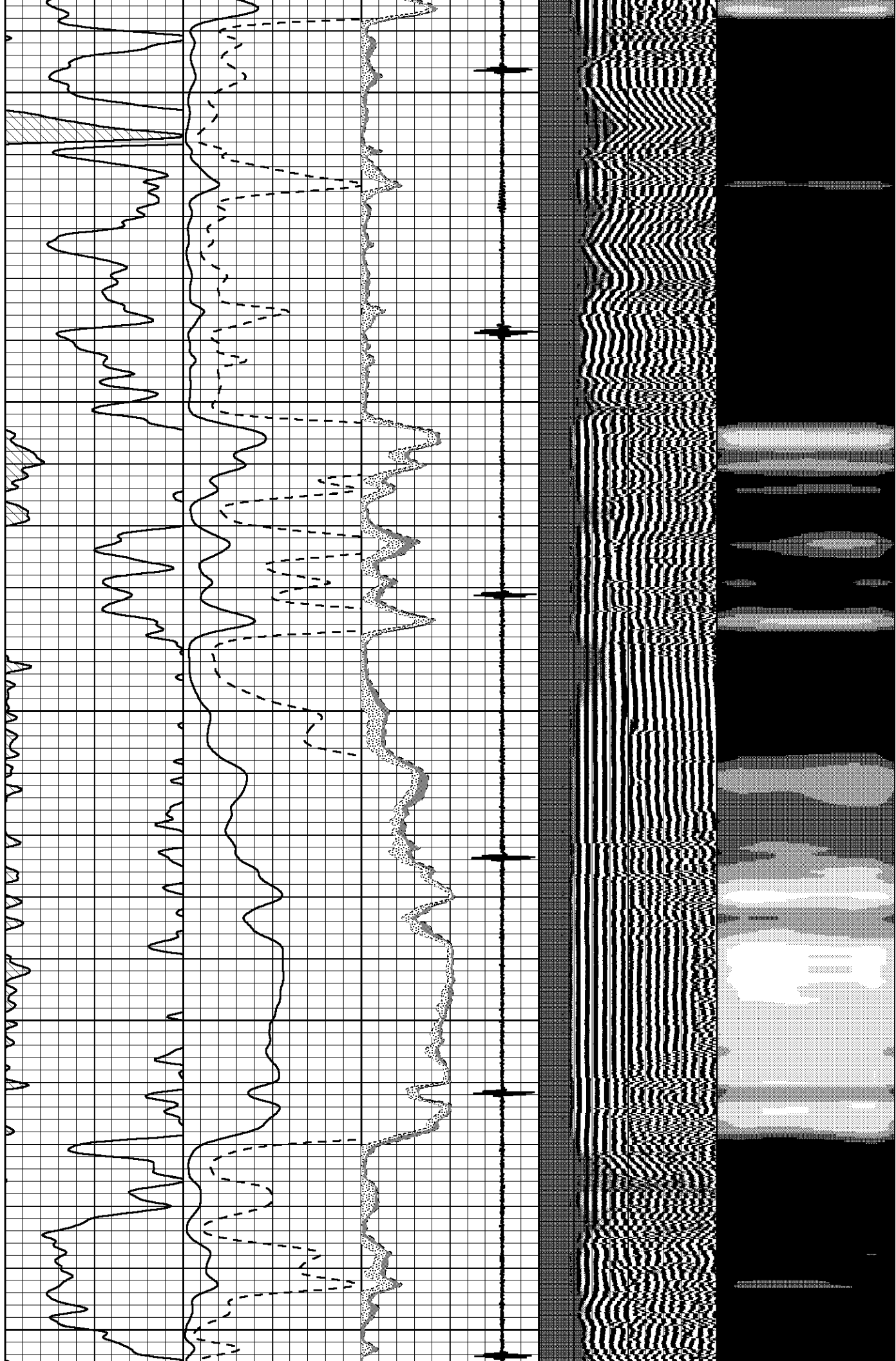
4050

4100

4150

4200

4250

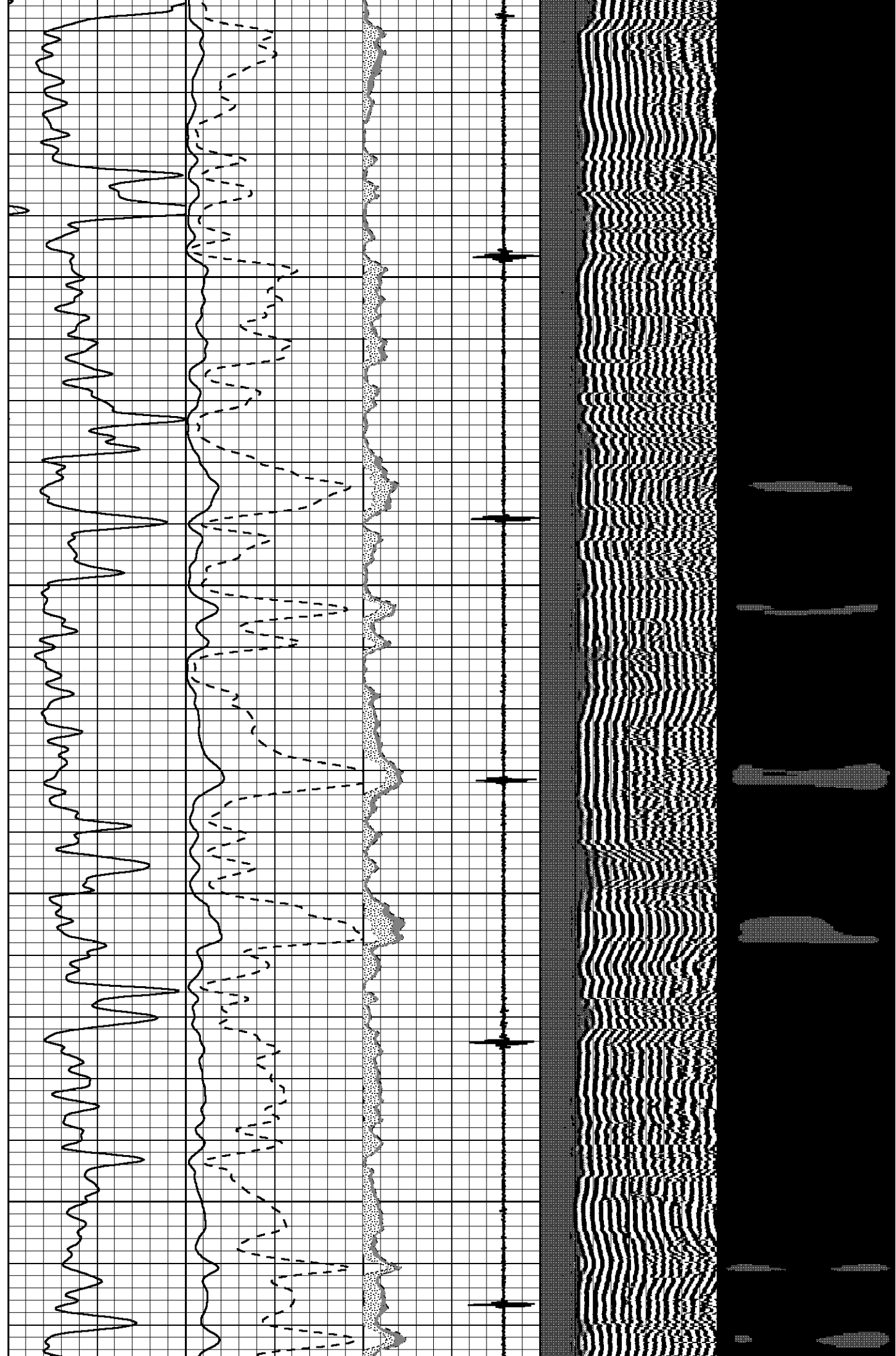


4300

4350

4400

4450

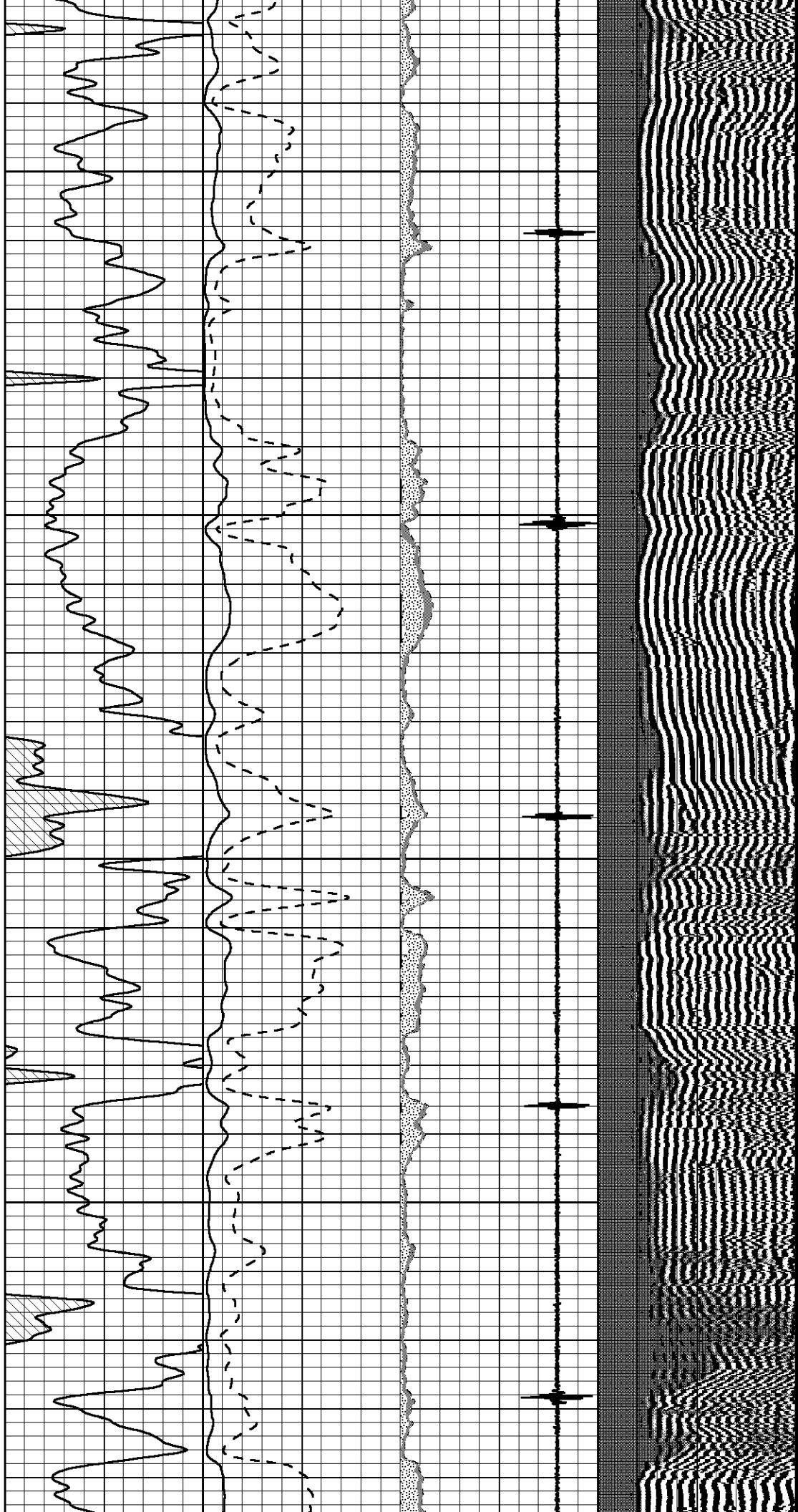


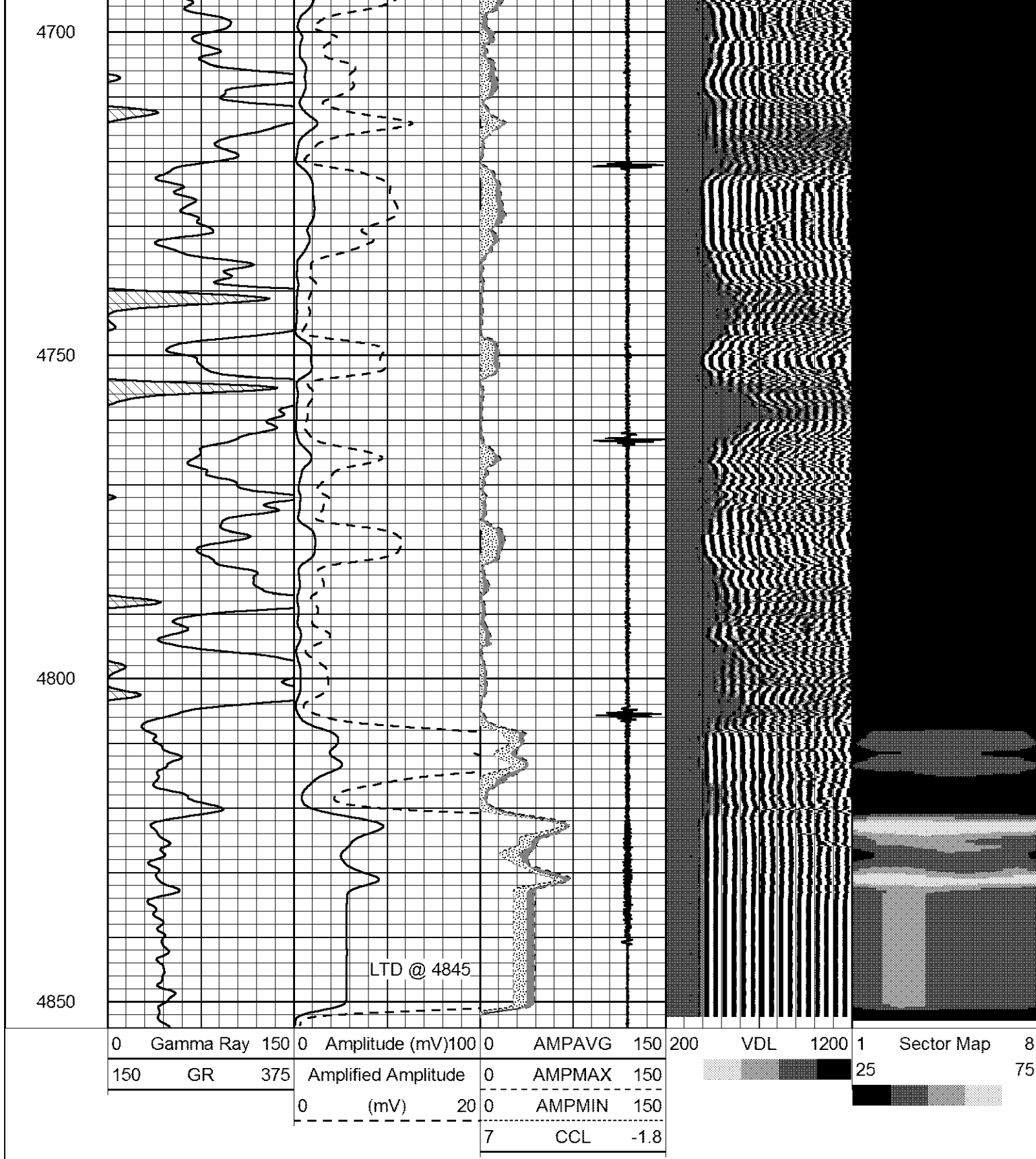
4500

4550

4600

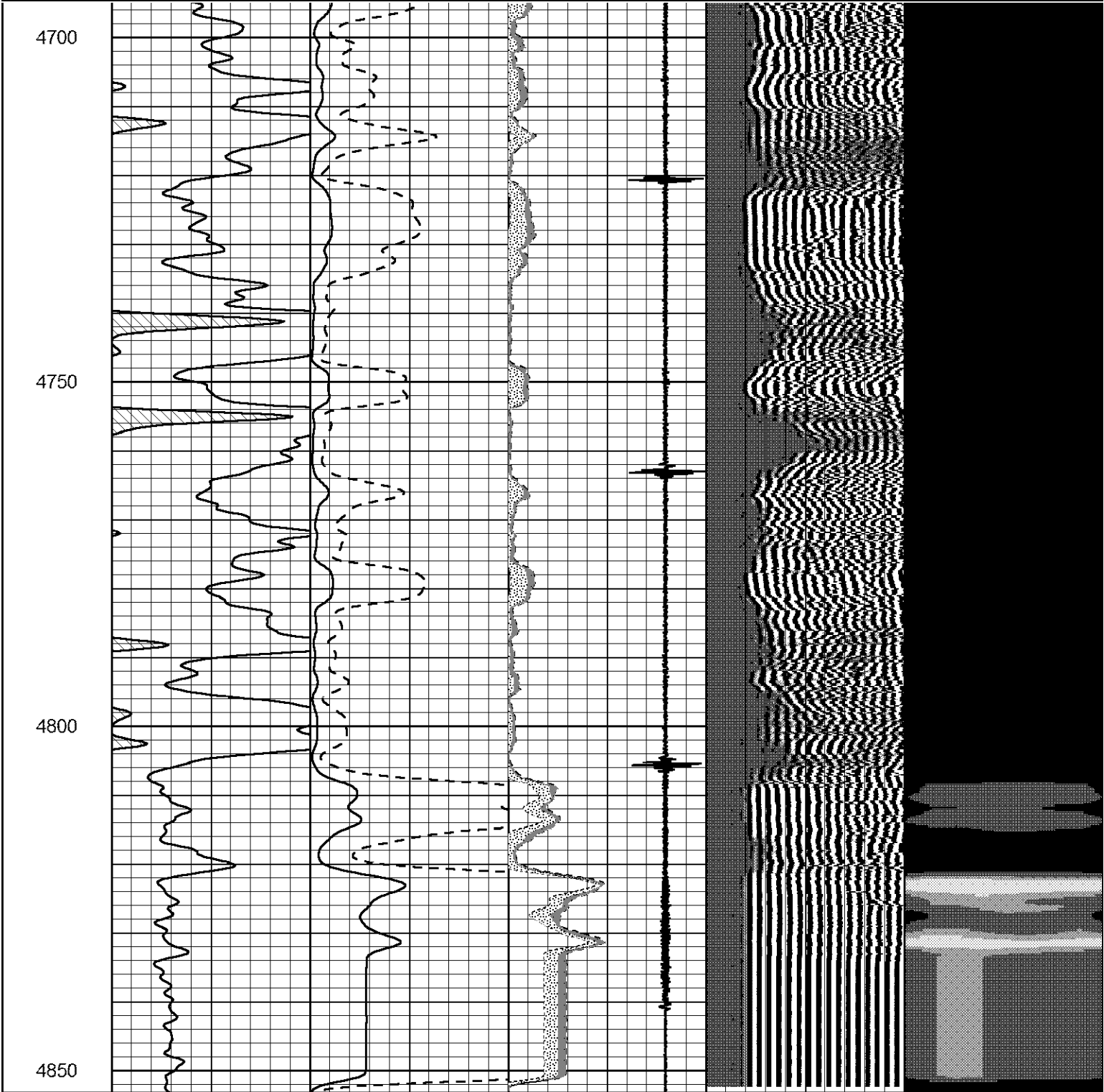
4650





0	Gamma Ray	150	0	Amplitude (mV)	100	0	AMPAVG	150
150	GR	375	Amplified Amplitude		0	0	AMPMAX	150
		0 (mV)		20	0	0	AMPMIN	150
		-----		-----	7	CCL		-1.8

200	VDL	1200	1	Sector Map	8
		25		75	



0	Gamma Ray	150	0	Amplitude (mV)	100	0	AMPAVG	150
150	GR	375	Amplified Amplitude		0	0	AMPMAX	150
		0 (mV)		20	0	0	AMPMIN	150
		-----		-----	7	CCL		-1.8

200	VDL	1200	1	Sector Map	8
		25		75	