



MIDWEST SURVEYS
 LOGGING - PERFORATING - CONSULTING SERVICES
 P.O. Box 68, Osawatomie, KS 66064
 913.755.2128

GAMMA RAY / NEUTRON / CCL

File No. _____

Company **Altavista Energy, Inc.**

Well **Guetterman No. AI-7**

Field **Longatecker**

County **Johnson** State **Kansas**

Location **3140' FSL & 865' FEL**

NE-SW-SE-NE

Sec. **19** Twp. **14S** Rge. **22E**

Permitt Dnum **GL** Elevation **NA**

Log Measured From **GL** K.B. NA

Drilling Measured From **GL** D.F. NA

Date **04-05-2012** Elevation **GL, NA**

Run Number **One**

Depth Logger **892.5**

Bottom Logged Interval **891.5**

Top Log Interval **20.0**

Fluid Level **Full**

Type Fluid **Water**

Density / Viscosity **NA**

Salinity - PPM Cl **NA**

Max Recorded Temp **NA**

Estimated Cement Top **NA**

Equipment No. **104** Location **Osawatomie**

Recorded By **Gary Winkisch**

Witnessed By **Doug Evans**

BORE-HOLE RECORD				CASING RECORD			
RUN No.	BIT	TO	FROM	SIZE	WGT.	FROM	TO
One	9.875"	0.0	23.7	7.00"	0.0	23.7	23.7
Two	5.625"	23.7	932.0	2.675"	0.0	23.7	23.7
				Barite	Set	At	899.5

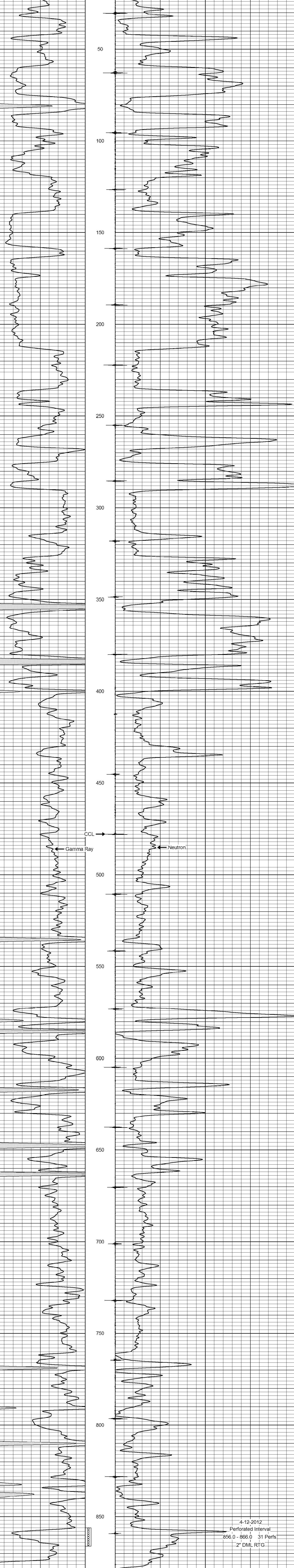
<<< Fold Here >>>

All interpretations are opinions based on inferences from electrical or other measurements and we cannot and do not guarantee the accuracy or correctness of any interpretation, and we shall not, except in the case of gross or willful negligence on our part, be liable or responsible for any loss, costs, damages, or expenses incurred or sustained by anyone resulting from any interpretation made by any of our officers, agents or employees. These interpretations are also subject to our general terms and conditions set out in our current Price Schedule.

Comments

Drilling Contractor :
 Town Oilfield Services

Database File: guetrmn7ai.db
 Dataset Pathname: pass1
 Presentation Format: gr-n-ccl
 Dataset Creation: Thu Apr 05 11:22:43 2012 by Log SCH 111116
 Charted by: Depth in Feet scaled 1:240



4-12-2012
 Perforated Interval
 856.0 - 866.0 31 Perfs
 2" DML RTG