



## Microresistivity Log

API No.	15-191-22,643-00-00	
Company	AAS Oil Company	
Well	Schrag No. 1	
Field	Wildcat	
County	Sumner	State
		Kansas
Location	SE SE SW 330' FSL & 2340' FWL	
Sec: 24	Twp: 34 S	Rge: 2 E
Permanent Datum	Ground Level	Elevation 1159
Log Measured From	Kelly Bushing	8 Ft. Above Perm. Datum
Drilling Measured From	Kelly Bushing	
		Other Services CNL/CDL DIL
		Elevation K.B. 1167 D.F. 1159 G.L. 1159

Date	4/20/2012
Run Number	Two
Depth Driller	3885
Depth Logger	3887
Bottom Logged Interval	3886
Top Log Interval	2200
Casing Driller	8.625 @ 258
Casing Logger	256
Bit Size	7.875
Type Fluid in Hole	Chemical
Salinity, ppm CL	1400
Density / Viscosity	9.2 38
pH / Fluid Loss	11.0 9.6
Source of Sample	Flowline
Rm @ Meas. Temp	.95 @ 65
Rmf @ Meas. Temp	.71 @ 65
Rmc @ Meas. Temp	1.28 @ 65
Source of Rmf / Rmc	Charts
Rm @ BHT	.54 @ 115
Operating Rig Time	4 1/2 Hours
Max Rec. Temp. F	115
Equipment Number	15
Location	Hays
Recorded By	D.Kerr
Witnessed By	Dan Johnson

<<< Fold Here >>>

All interpretations are opinions based on inferences from electrical or other measurements and we cannot and do not guarantee the accuracy or correctness of any interpretation, and we shall not, except in the case of gross or willful negligence on our part, be liable or responsible for any loss, costs, damages, or expenses incurred or sustained by anyone resulting from any interpretation made by any of our officers, agents or employees. These interpretations are also subject to our general terms and conditions set out in our current Price Schedule.

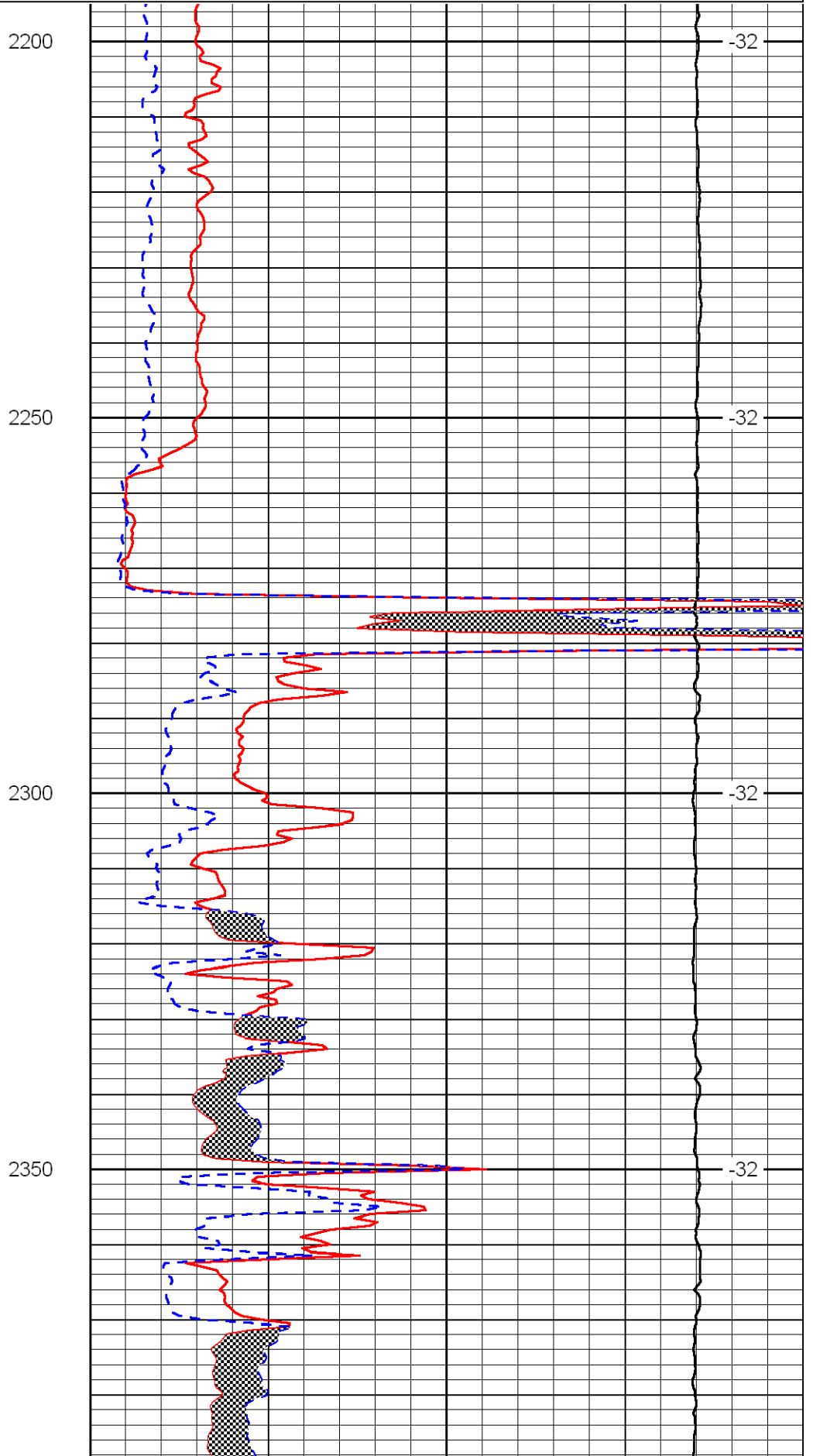
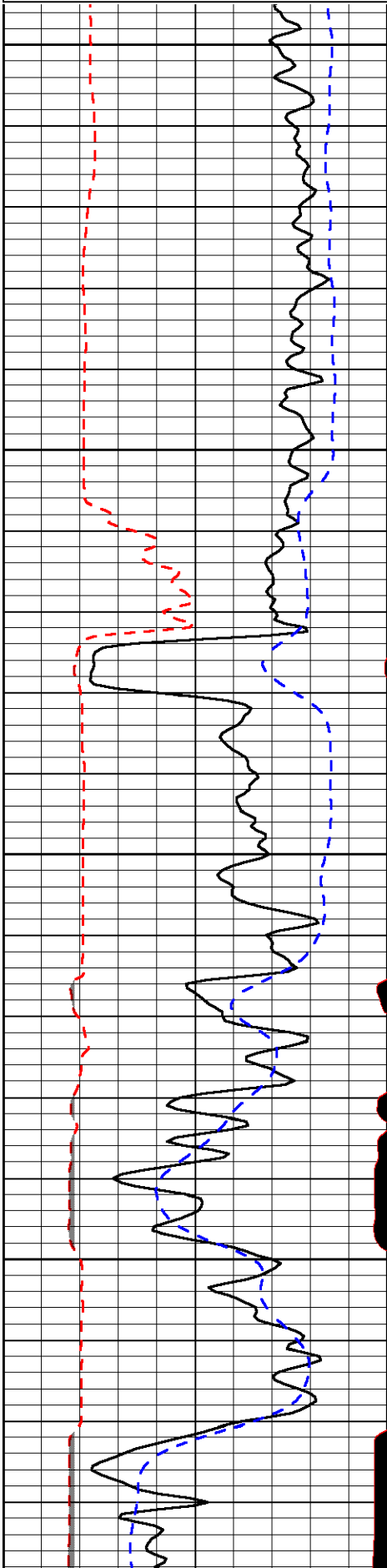
Comments

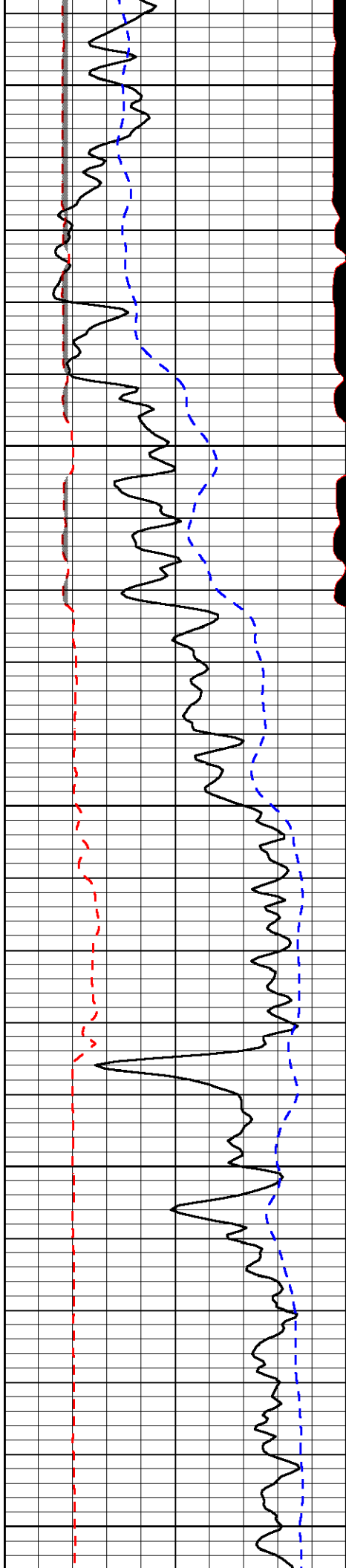
Thank you for using Log-Tech, Inc.  
 (785) 625-3858  
 South Haven Exit and I-35,  
 East to the County Line,  
 1 North, 1/2 West North Into

Database File: aas\_schrag\_1hd.db  
 Dataset Pathname: DIL/aasstk  
 Presentation Format: micro  
 Dataset Creation: Fri Apr 20 10:52:51 2012  
 Charted by: Depth in Feet scaled 1:240

0	Gamma Ray	150
6	MCAL (GAPI)	16
2.875	Mud Cake (GAPI)	7.875
-200	SP	0

0	Micro Inverse 1 X 1	40
0	Micro Normal 2"	40
10000	Line Weight	0
		LSPD





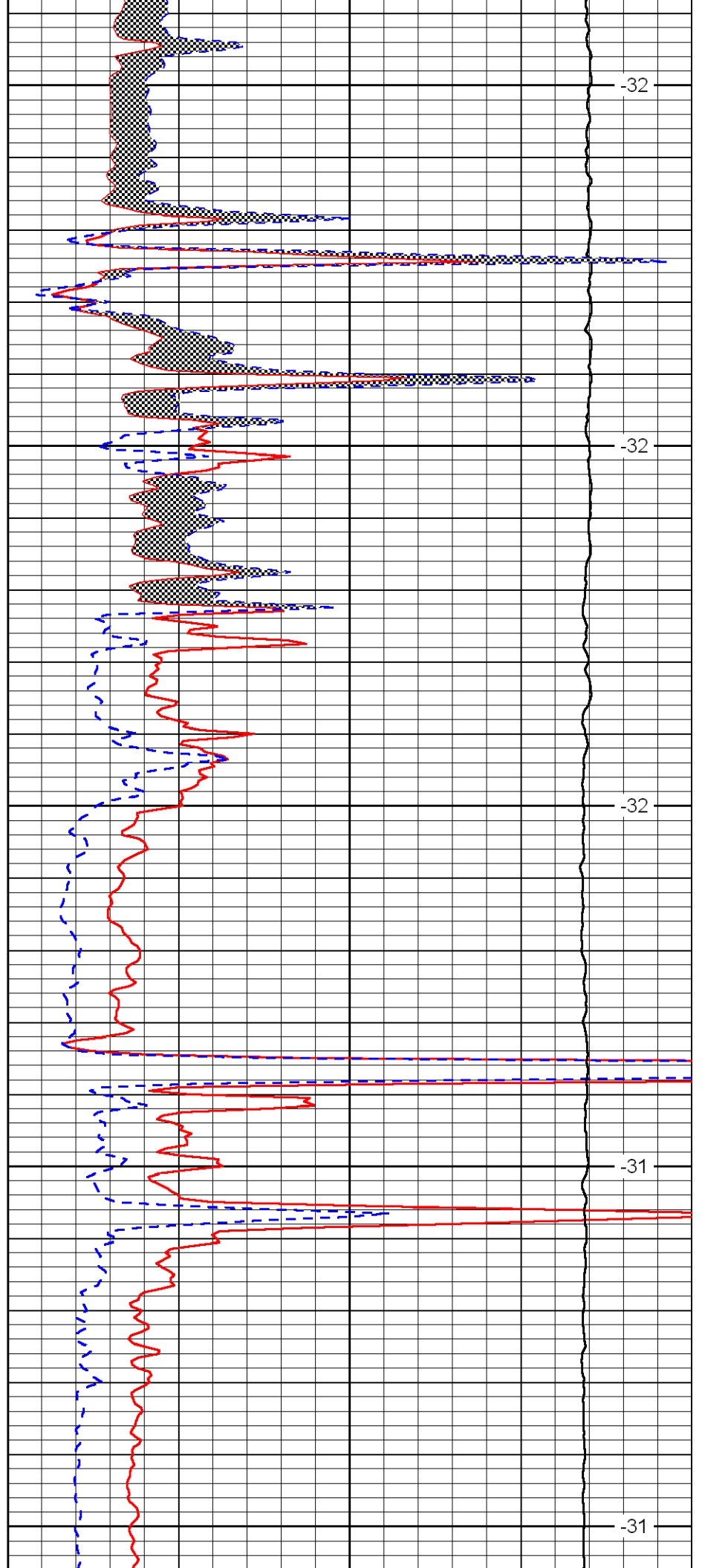
2400

2450

2500

2550

2600



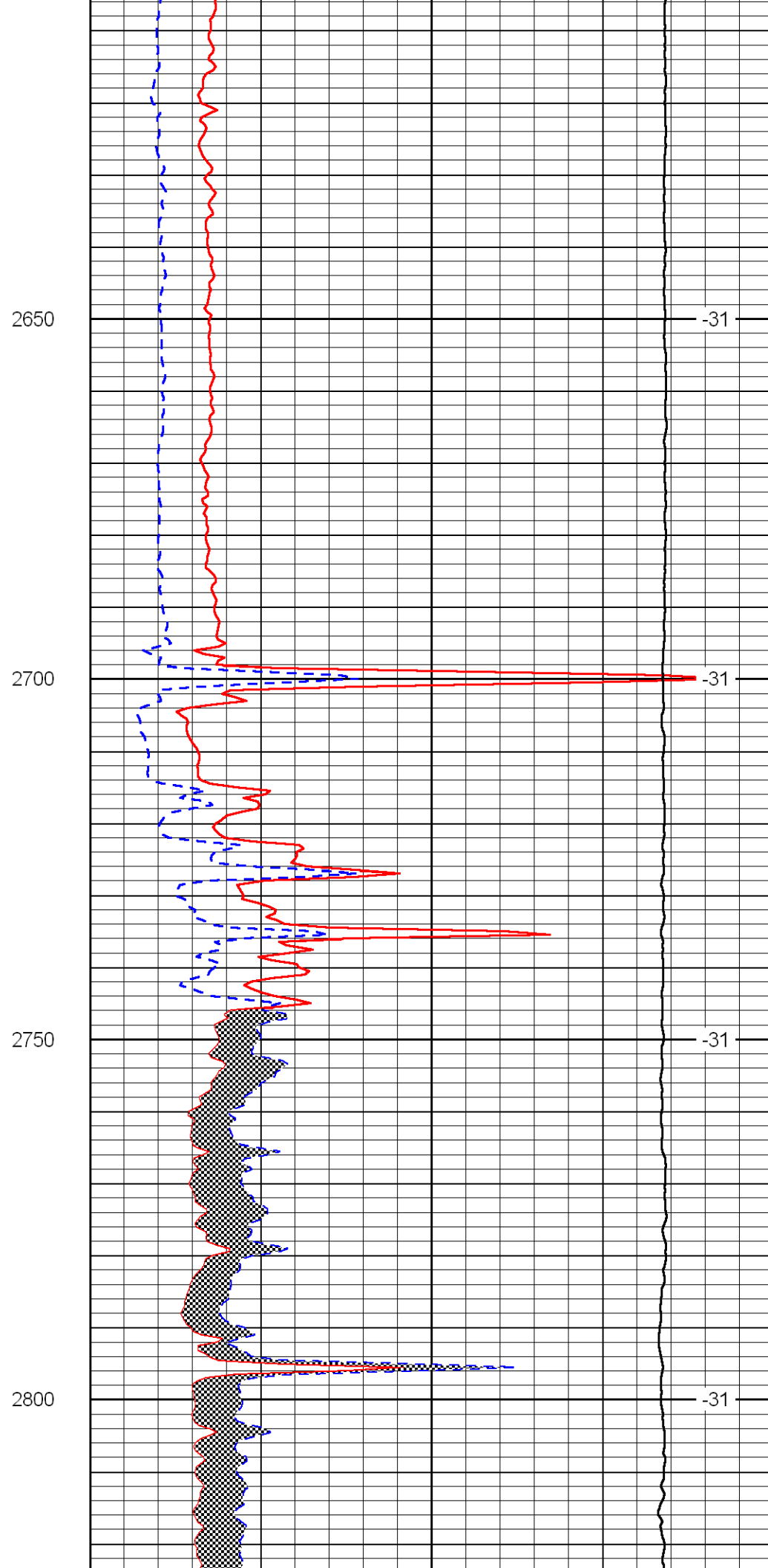
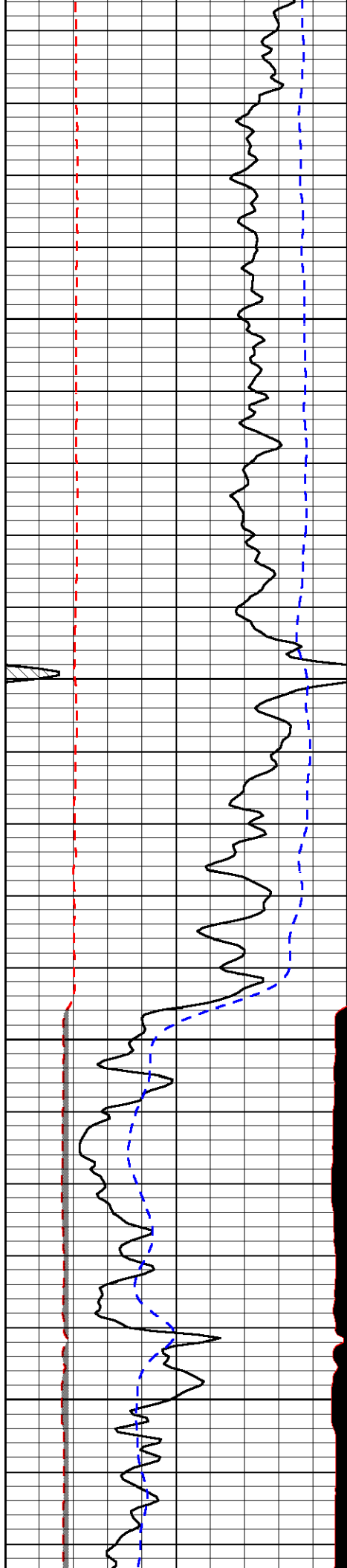
-32

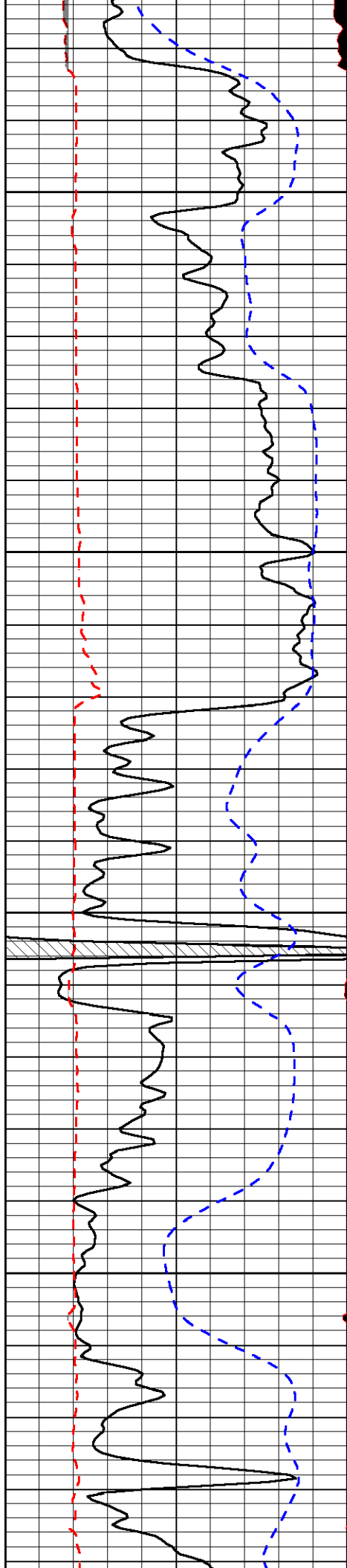
-32

-32

-31

-31



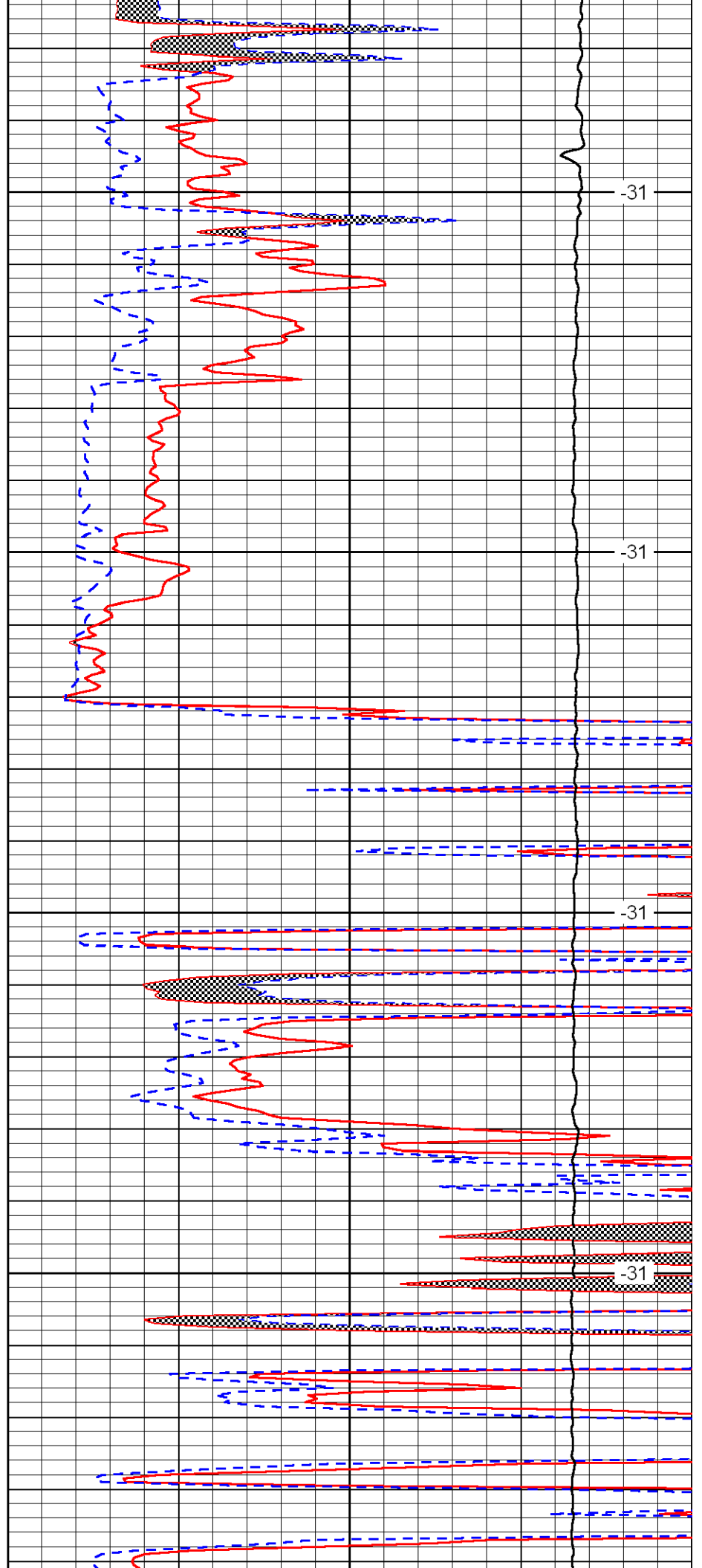


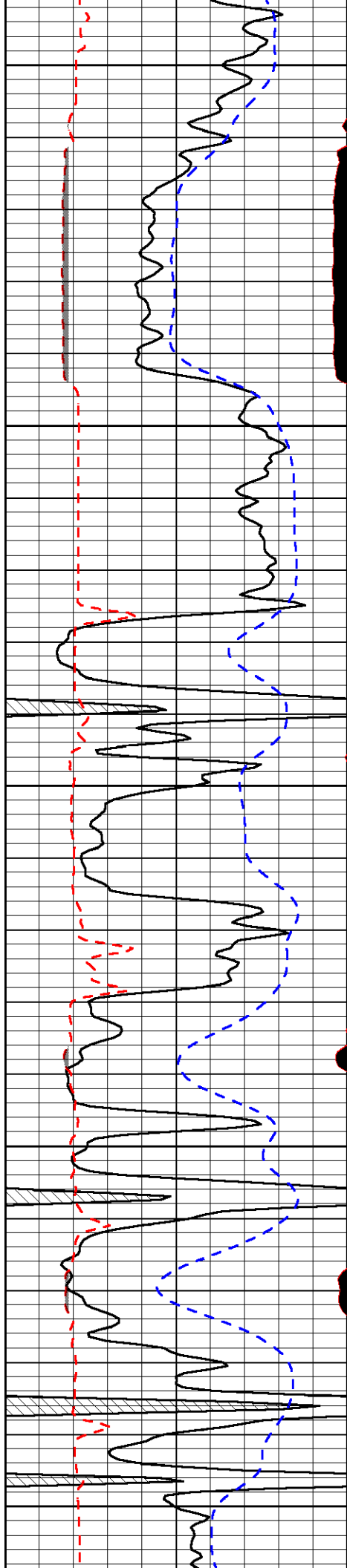
2850

2900

2950

3000





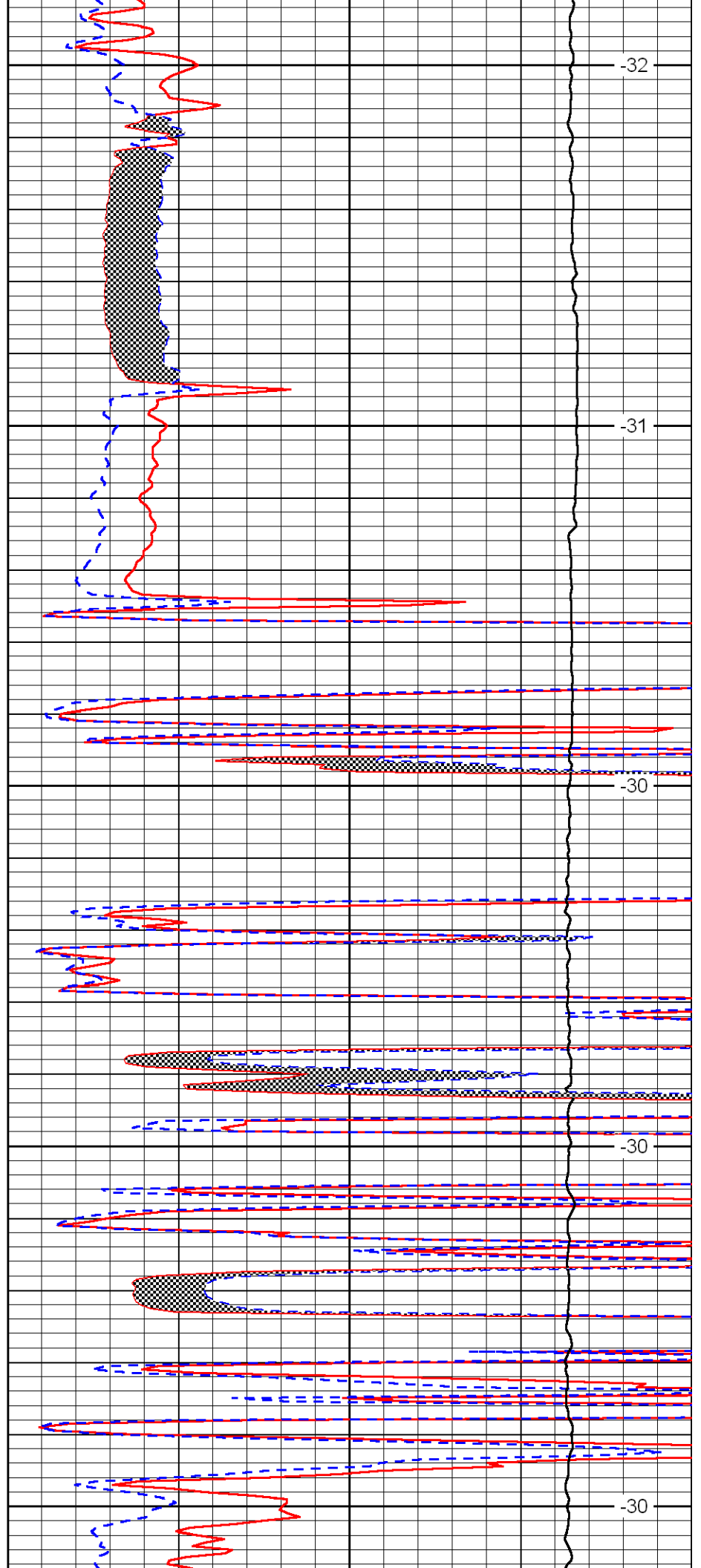
3050

3100

3150

3200

3250



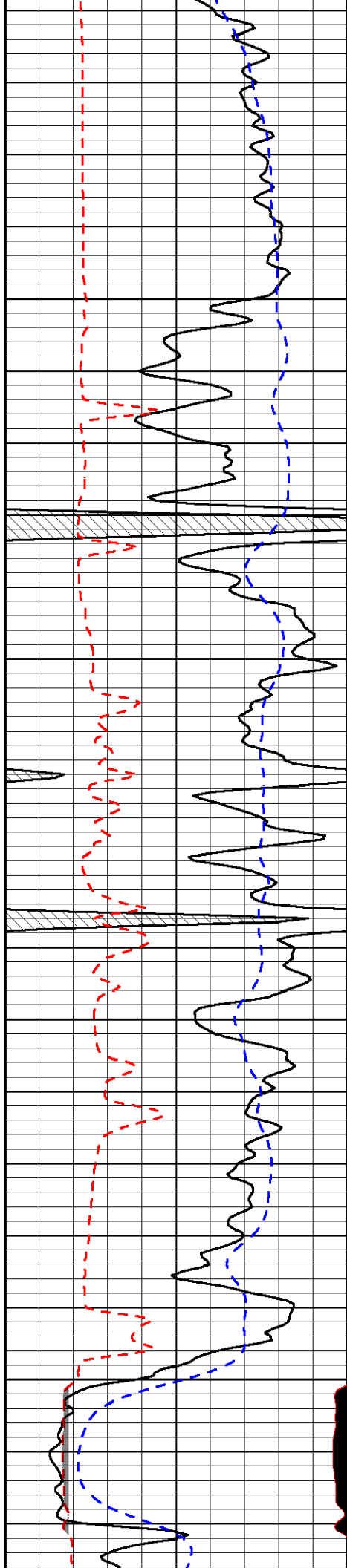
-32

-31

-30

-30

-30

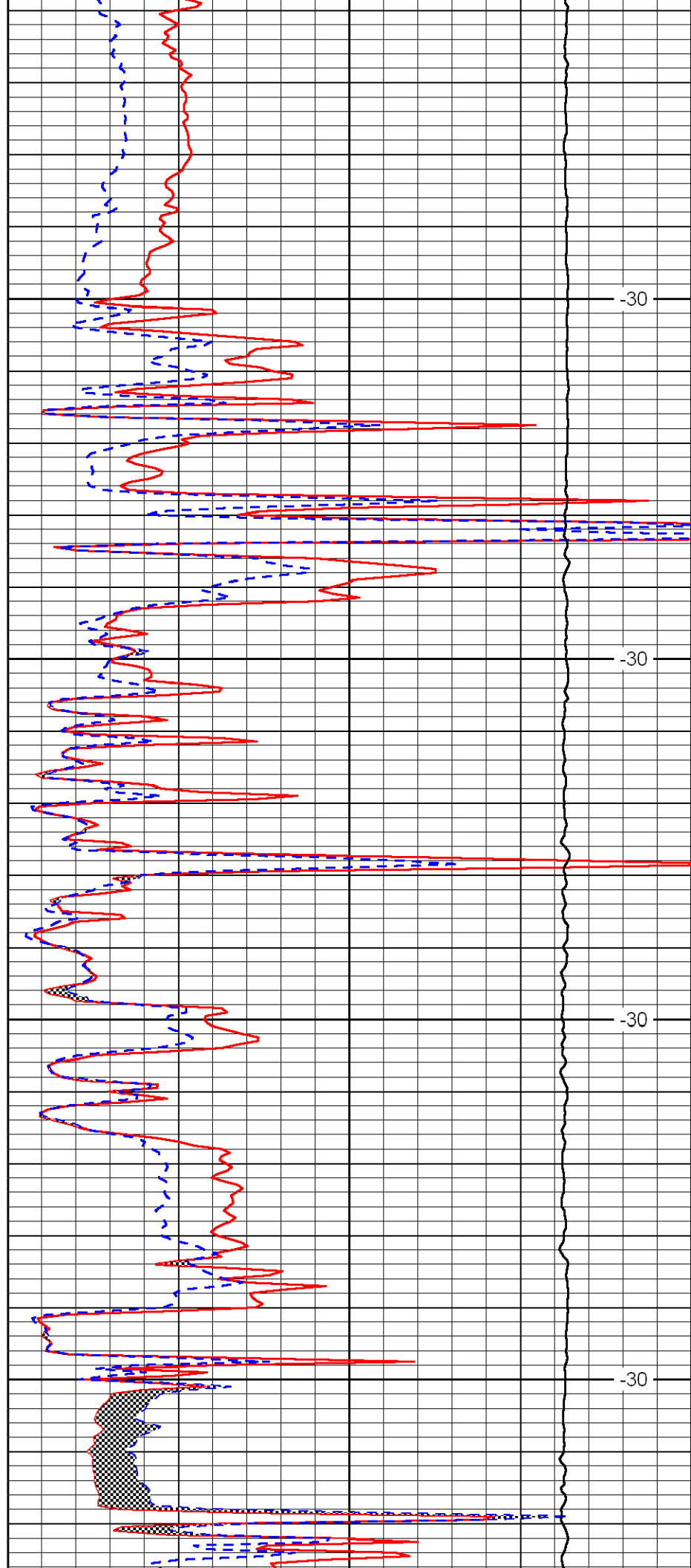


3300

3350

3400

3450

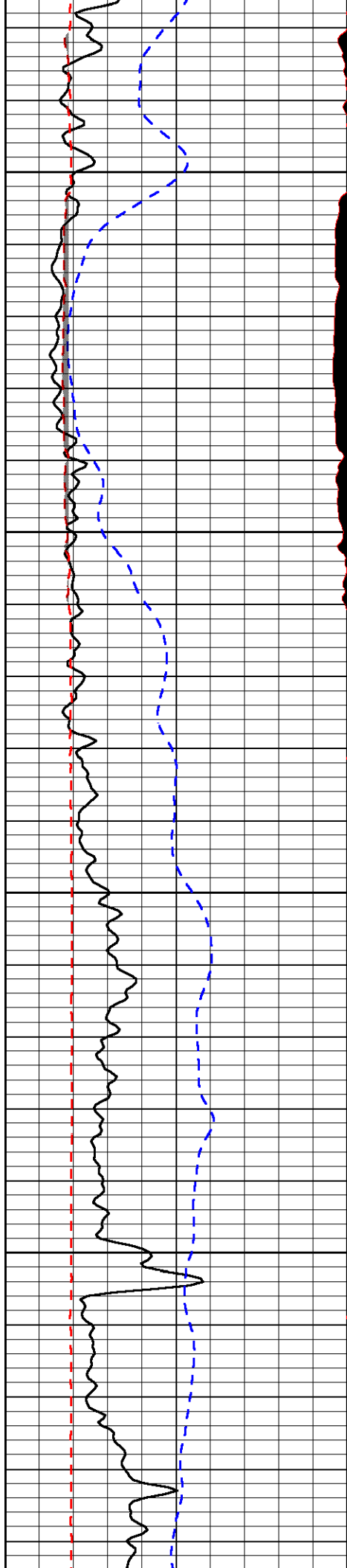


-30

-30

-30

-30

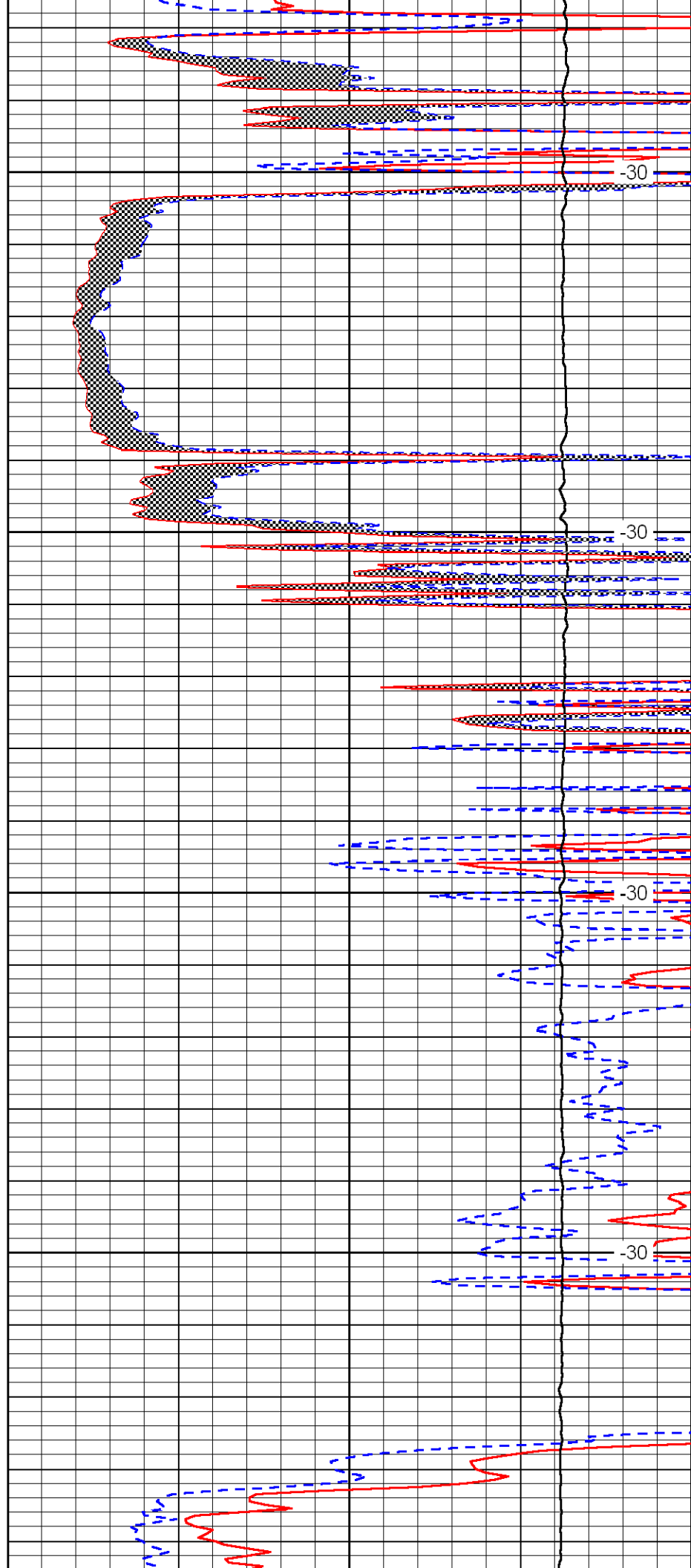


3500

3550

3600

3650

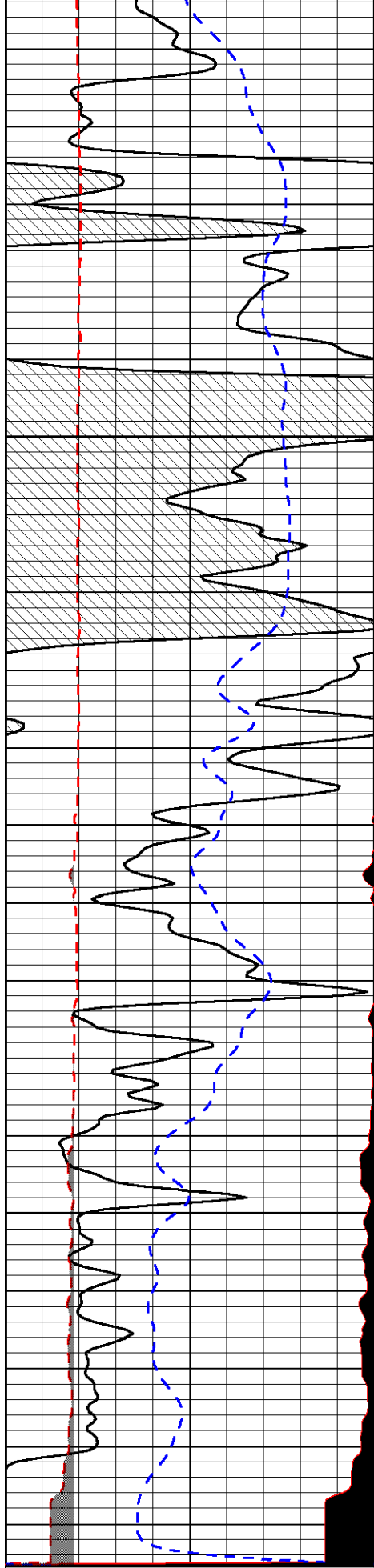


-30

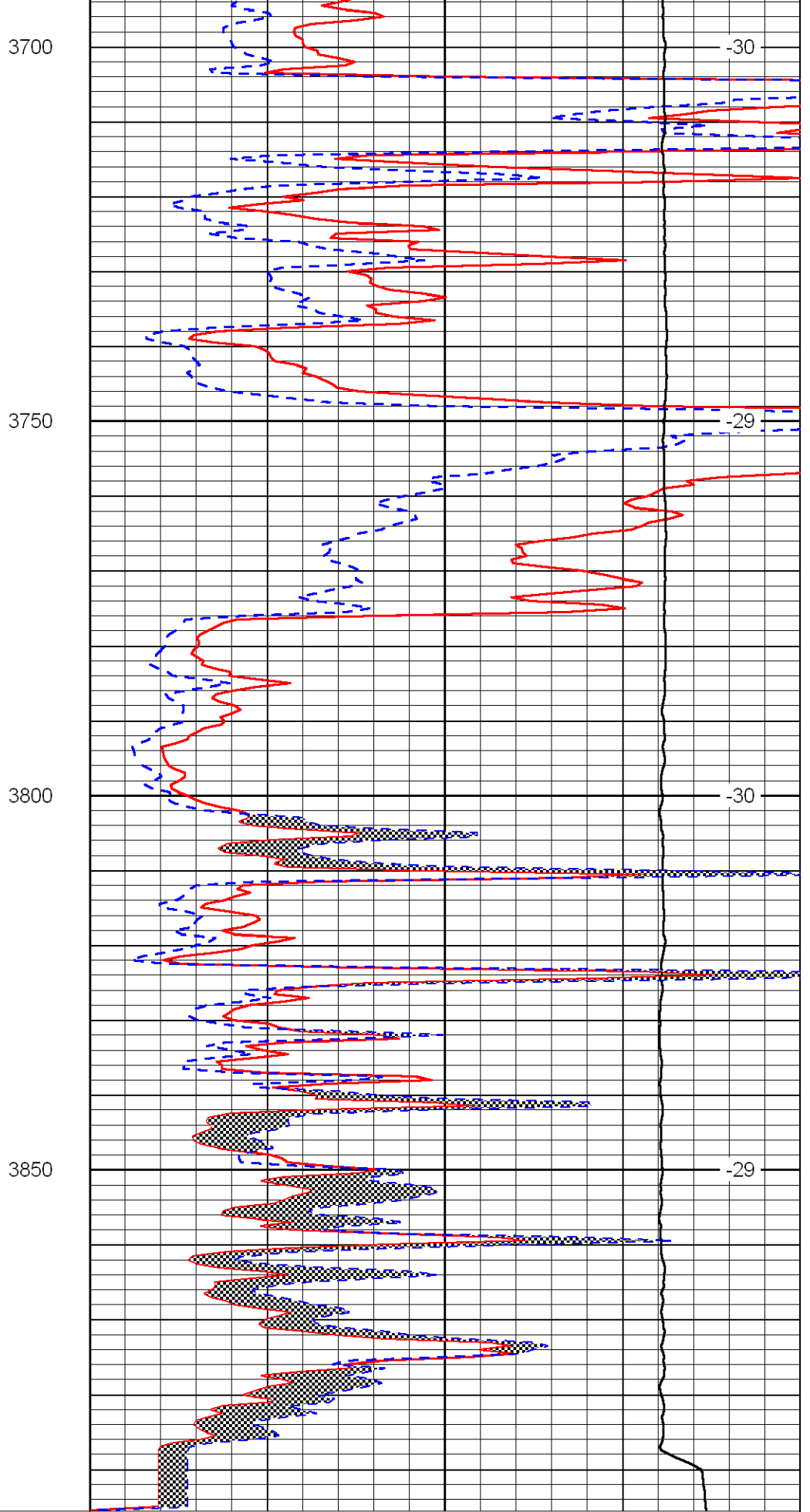
-30

-30

-30



0	Gamma Ray	150
6	MCAL (GAPI)	16
2.875	Mud Cake (GAPI)	7.875



0	Micro Inverse 1 X 1	40
0	Micro Normal 2''	40
10000	Line Weight	0

-200

SP

0

LSPD