



DIGITAL LOG (785) 625-3858

Dual Compensated Porosity Log

API No. 15-191-22,643-00-00

Company AAS Oil Company  
 Well Schrag No. 1  
 Field Wildcat  
 County Sumner State Kansas

Location SE SE SW  
 330' FSL & 2340' FWL  
 Sec: 24 Twp: 34 S Rge: 2 E

Other Services  
 DIL/MEL

Permanent Datum Ground Level Elevation 1159  
 Log Measured From Kelly Bushing 8 Ft. Above Perm. Datum  
 Drilling Measured From Kelly Bushing

K.B. 1167  
 D.F. 1159  
 G.L. 1159

Date 4/20/2012

Run Number One

Type Log CNL / CDL

Depth Driller 3885

Depth Logger 3887

Bottom Logged Interval 3885

Top Logged Interval 2200

Type Fluid In Hole Chemical

Salinity, PPM CL 1400

Density 9.2

Level Full

Max. Rec. Temp. F 115

Operating Rig Time 4 1/2 Hours

Equipment -- Location 15 Hays

Recorded By D.Kerr

Witnessed By Dan Johnson

Borehole Record				Casing Record			
Run No	Bit	From	To	Size	Wgt.	From	To
One	12.25	00	258	8.625	23#	00	258
Two	7.875	258	TD				

<<< Fold Here >>>

All interpretations are opinions based on inferences from electrical or other measurements and we cannot and do not guarantee the accuracy or correctness of any interpretation, and we shall not, except in the case of gross or willful negligence on our part, be liable or responsible for any loss, costs, damages, or expenses incurred or sustained by anyone resulting from any interpretation made by any of our officers, agents or employees. These interpretations are also subject to our general terms and conditions set out in our current Price Schedule.

Comments

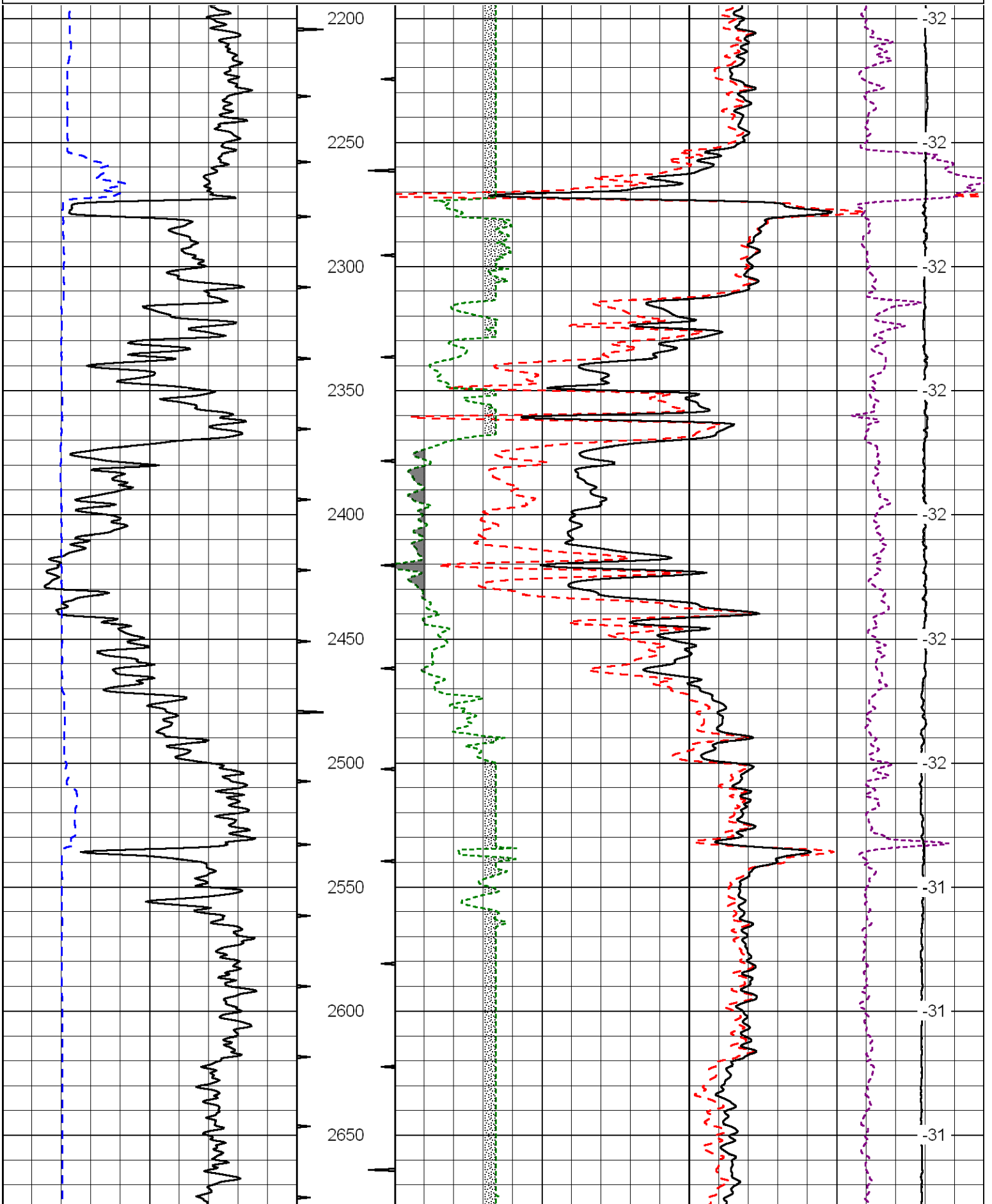
Thank you for using Log-Tech, Inc.  
 (785) 625-3858

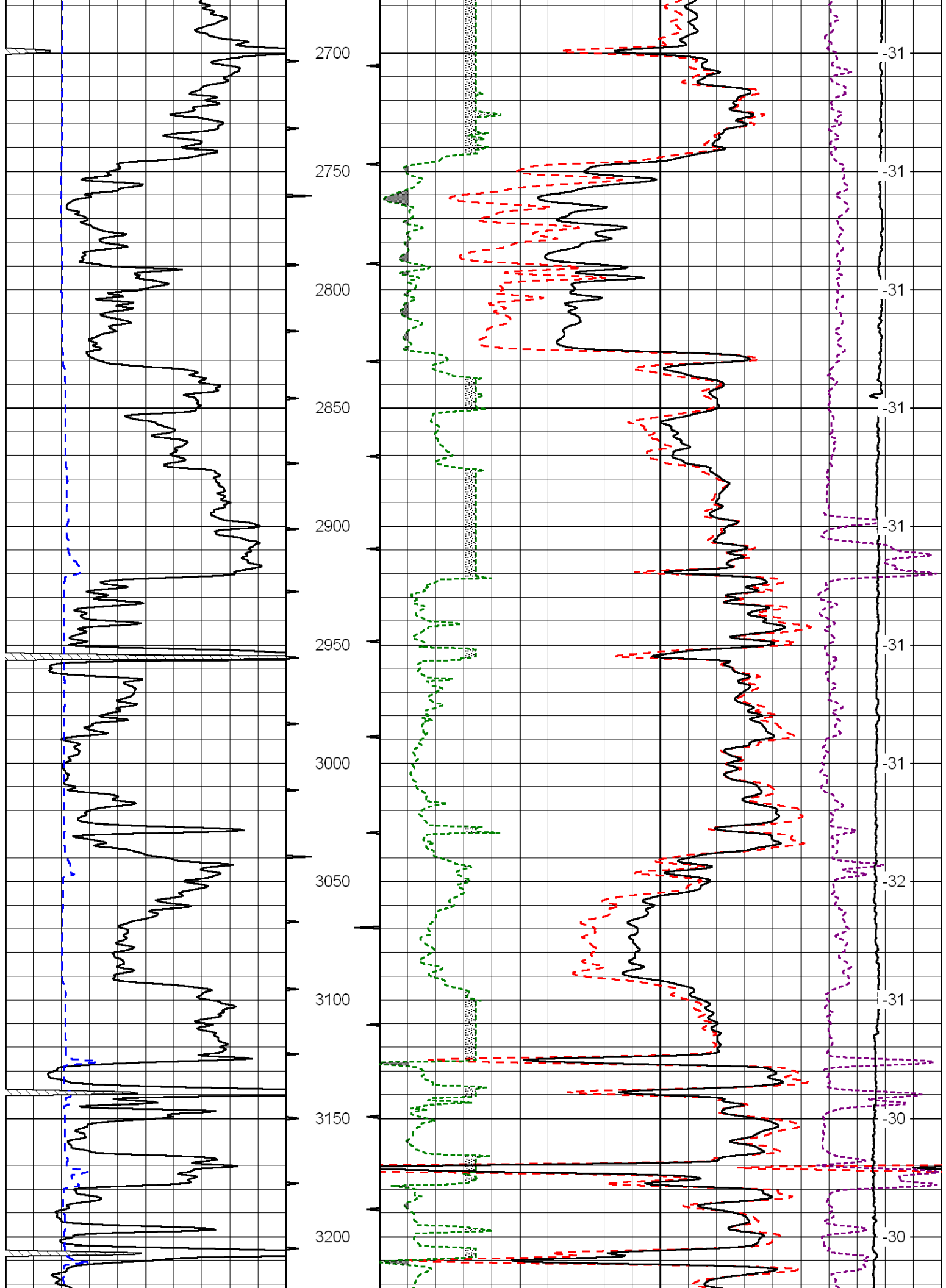
South Haven Exit and I-35,  
 East to the County Line,  
 1 North, 1/2 West North Into

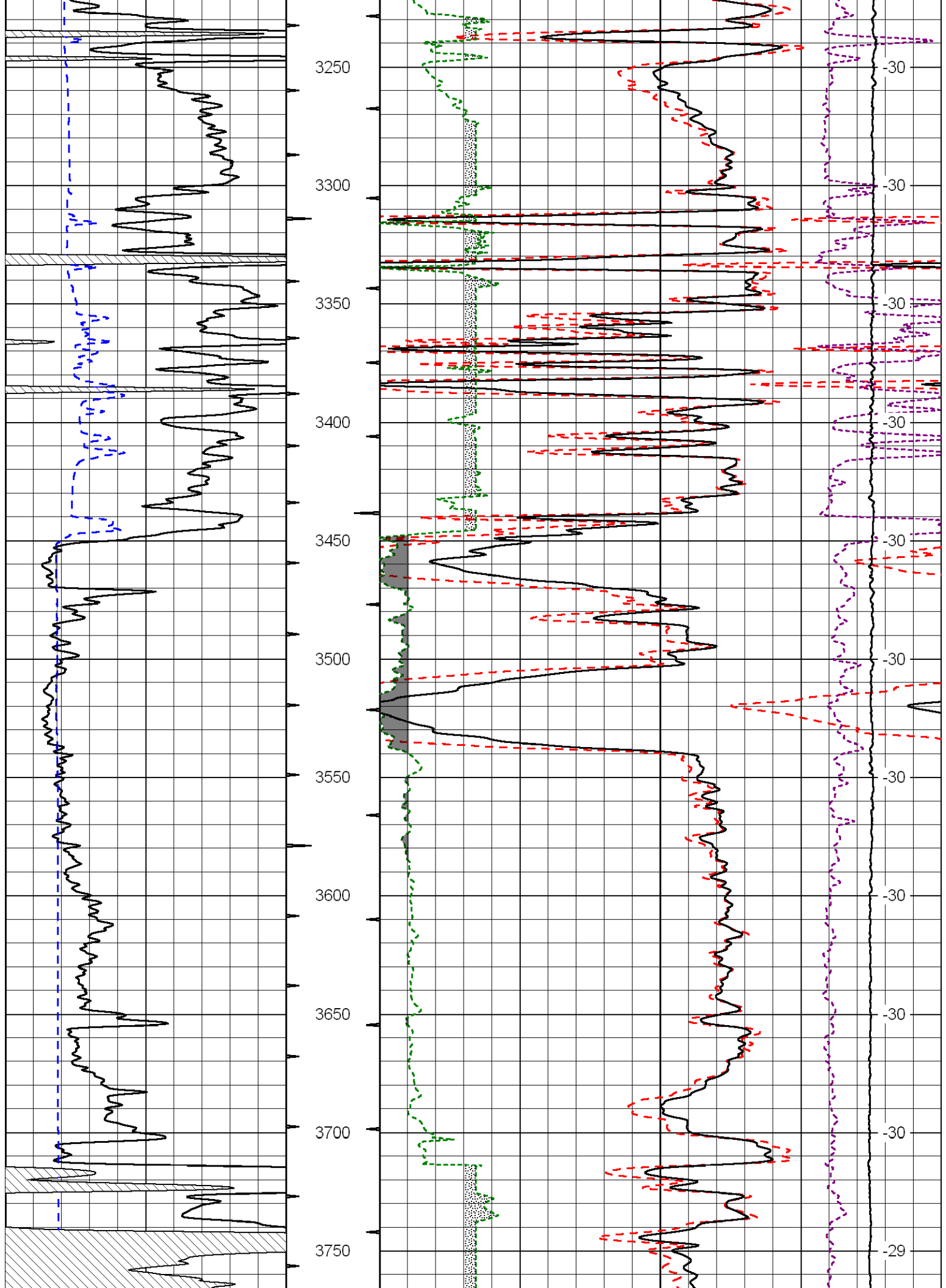
Database File: aas\_schrag\_1hd.db  
 Dataset Pathname: DIL/aasstk  
 Presentation Format: cdl  
 Dataset Creation: Fri Apr 20 10:52:51 2012  
 Charted by: Depth in Feet scaled 1:600

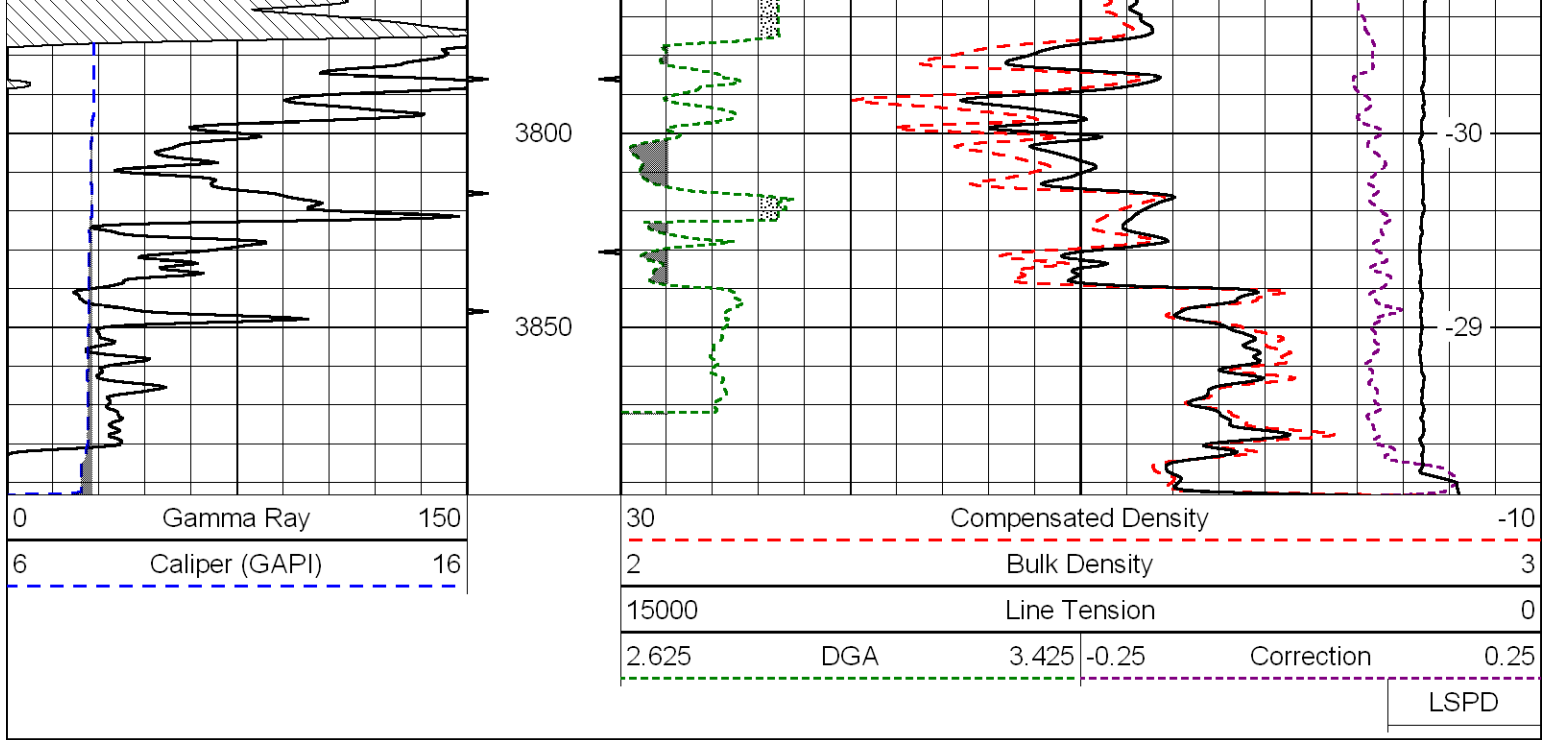
0	Gamma Ray	150
6	Caliper (GAPI)	16

30	Compensated Density		-10
2	Bulk Density		3
15000	Line Tension		0
2.625	DGA	3.425	-0.25
Correction			0.25
LSPD			









Database File: aas\_schrag\_1hd.db  
 Dataset Pathname: DIL/aasstk  
 Presentation Format: cndlspec  
 Dataset Creation: Fri Apr 20 10:52:51 2012  
 Charted by: Depth in Feet scaled 1:240

