



DIGITAL LOG (785) 625-3858

Dual Induction Log

API No.	15-191-22,643-00-00	
Company	AAS Oil Company	
Well	Schrag No. 1	
Field	Wildcat	
County	Sumner	State
		Kansas
Location	SE SE SW 330' FSL & 2340' FWL	
Sec: 24	Twp: 34 S	Rge: 2 E
Permanent Datum	Ground Level	Elevation 1159
Log Measured From	Kelly Bushing	8 Ft. Above Perm. Datum
Drilling Measured From	Kelly Bushing	
		Other Services CNL/CDL MEL
		Elevation K.B. 1167 D.F. 1159 G.L. 1159

Date	4/20/2012
Run Number	One
Depth Driller	3885
Depth Logger	3887
Bottom Logged Interval	3886
Top Log Interval	250
Casing Driller	8.625 @ 258
Casing Logger	256
Bit Size	7.875
Type Fluid in Hole	Chemical
Salinity, ppm CL	1400
Density / Viscosity	9.2 38
pH / Fluid Loss	11.0 9.6
Source of Sample	Flowline
Rm @ Meas. Temp	.95 @ 65
Rmf @ Meas. Temp	.71 @ 65
Rmc @ Meas. Temp	1.28 @ 65
Source of Rmf / Rmc	Charts
Rm @ BHT	.54 @ 115
Operating Rig Time	4 1/2 Hours
Max Rec. Temp. F	115
Equipment Number	15
Location	Hays
Recorded By	D.Kerr
Witnessed By	Dan Johnson

<<< Fold Here >>>

All interpretations are opinions based on inferences from electrical or other measurements and we cannot and do not guarantee the accuracy or correctness of any interpretation, and we shall not, except in the case of gross or willful negligence on our part, be liable or responsible for any loss, costs, damages, or expenses incurred or sustained by anyone resulting from any interpretation made by any of our officers, agents or employees. These interpretations are also subject to our general terms and conditions set out in our current Price Schedule.

Comments

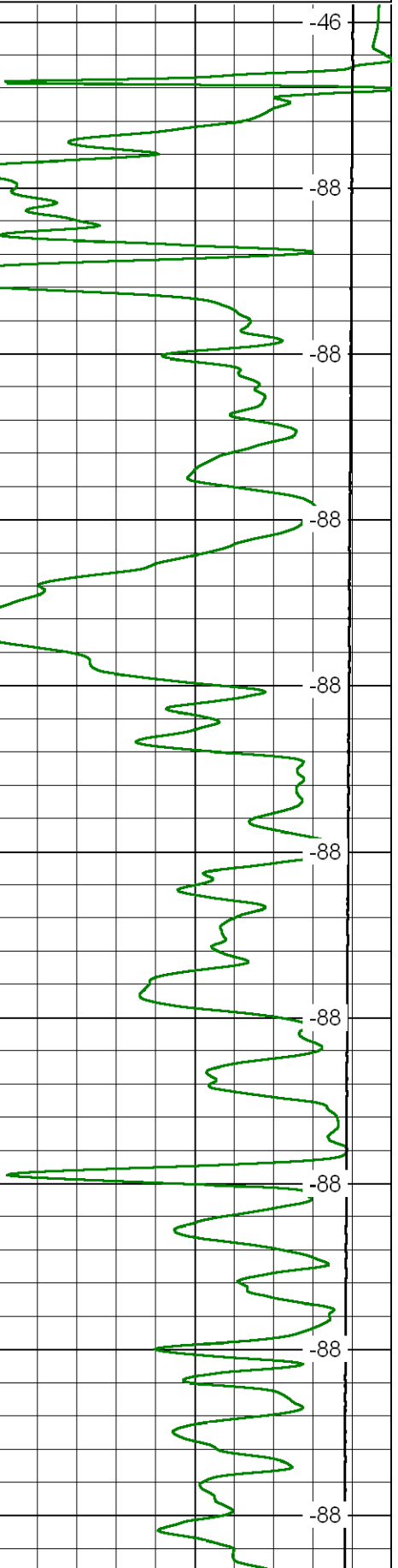
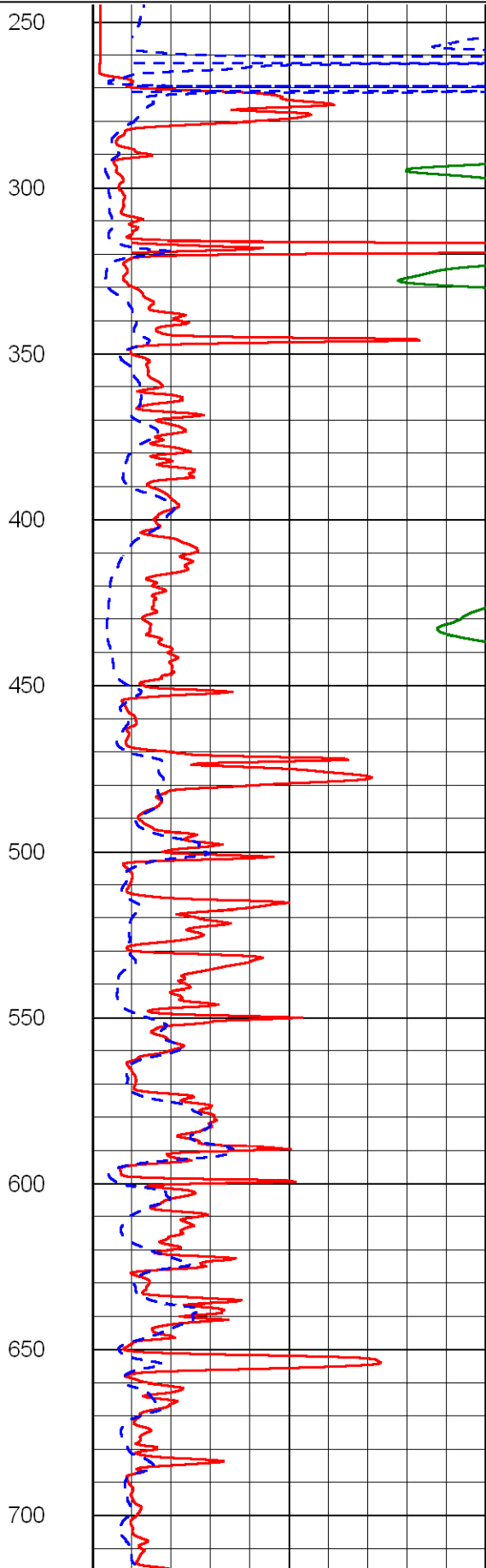
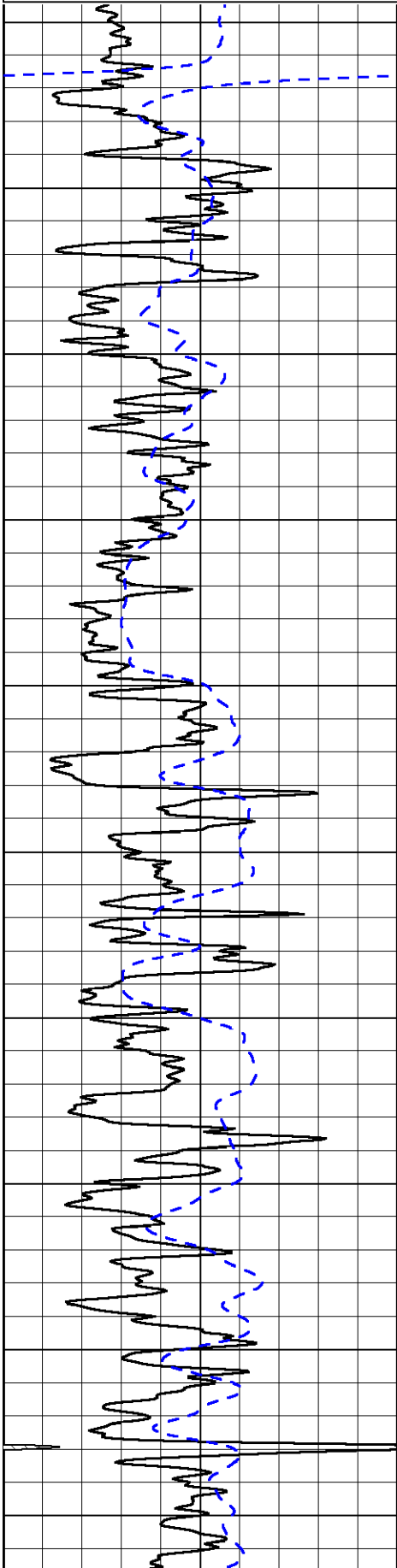
Thank you for using Log-Tech, Inc.
 (785) 625-3858
 South Haven Exit and I-35,
 East to the County Line,
 1 North, 1/2 West North Into

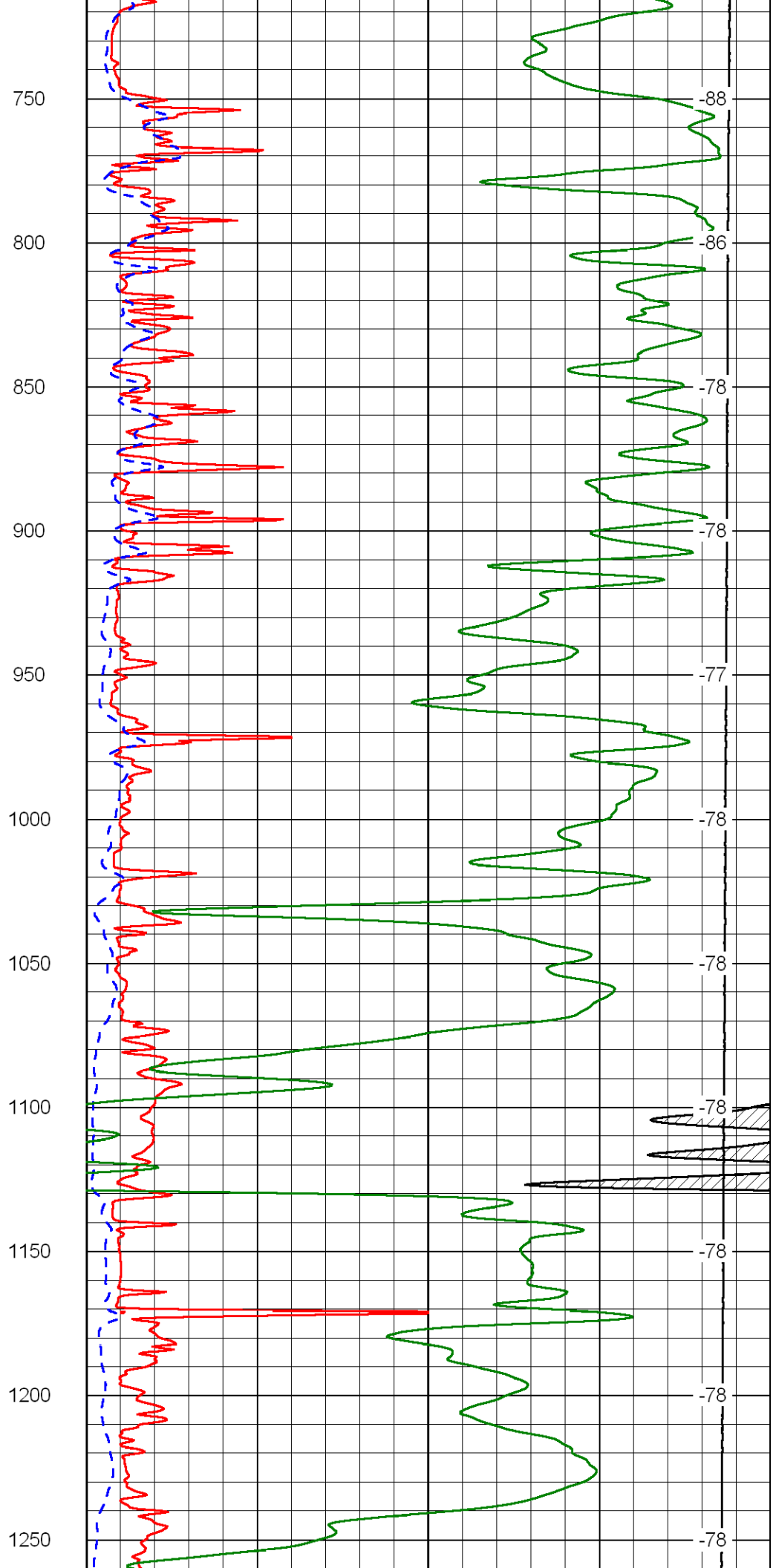
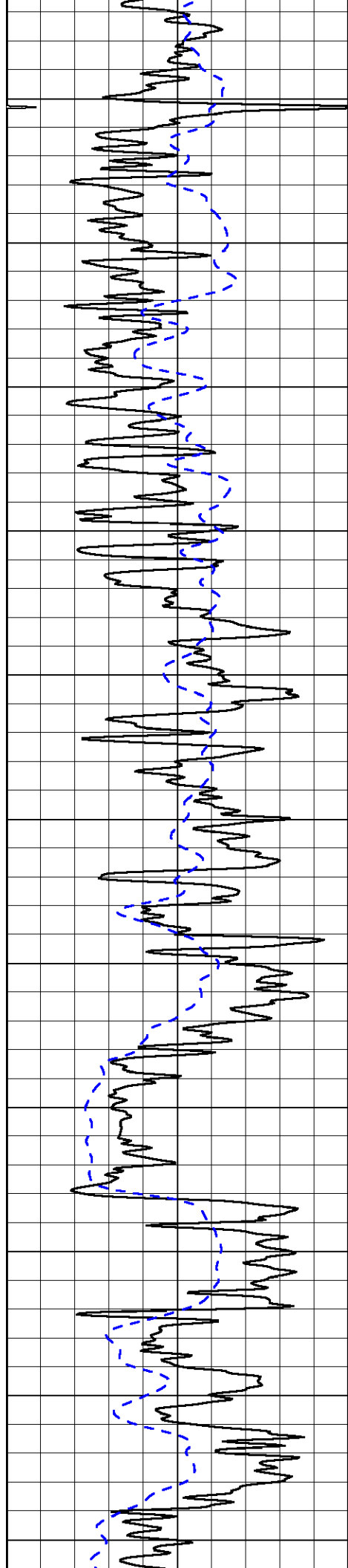
Database File: aas_schrag_1hd.db
 Dataset Pathname: DIL/aasstk
 Presentation Format: dil2in
 Dataset Creation: Fri Apr 20 10:52:51 2012
 Charted by: Depth in Feet scaled 1:600

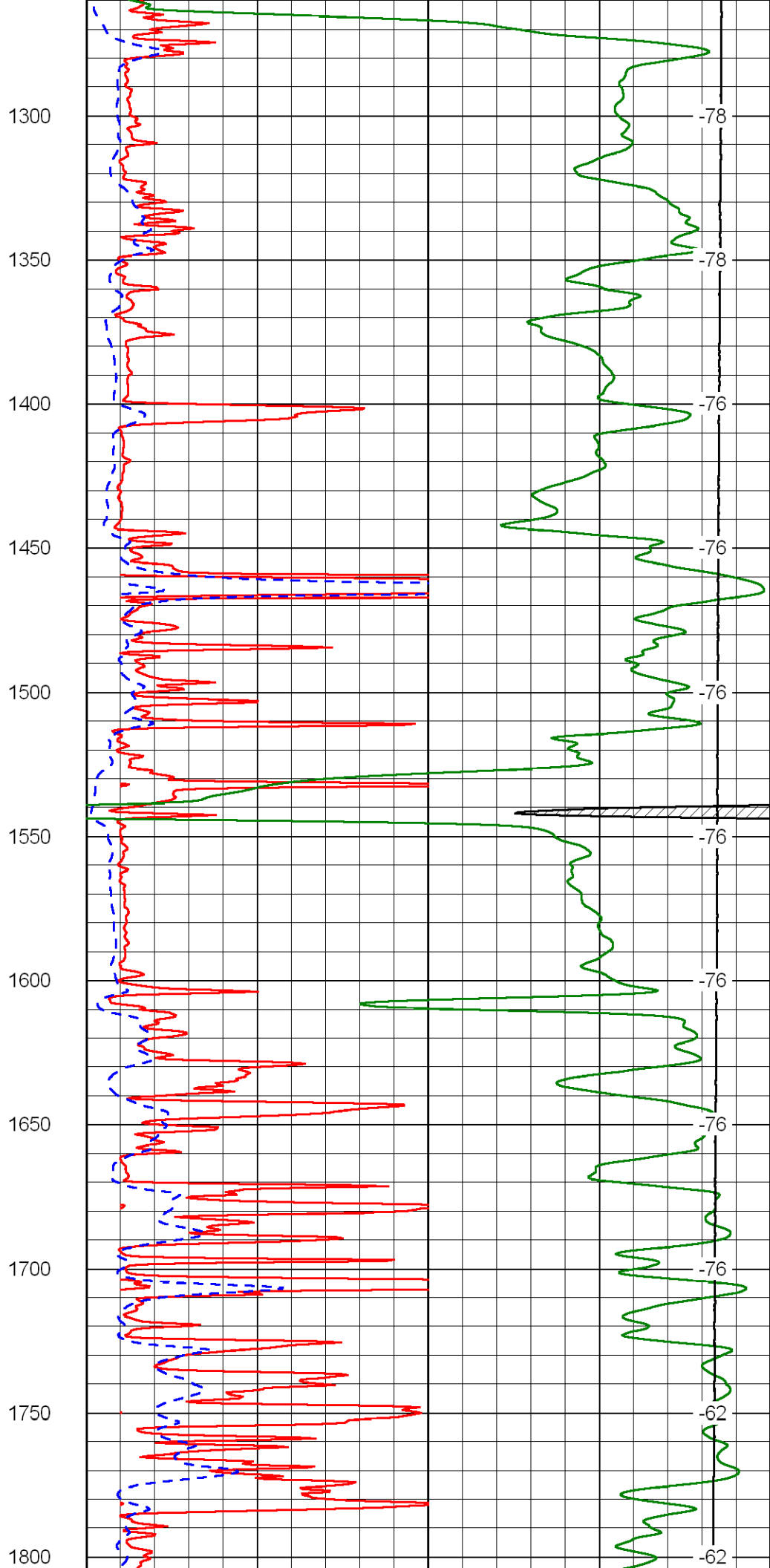
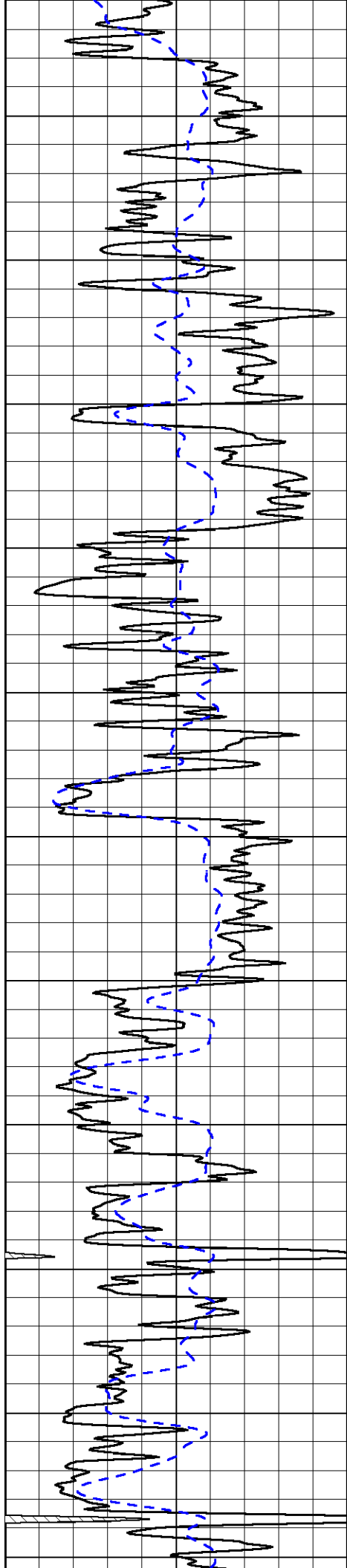
0 Gamma Ray 150
-200 SP 0

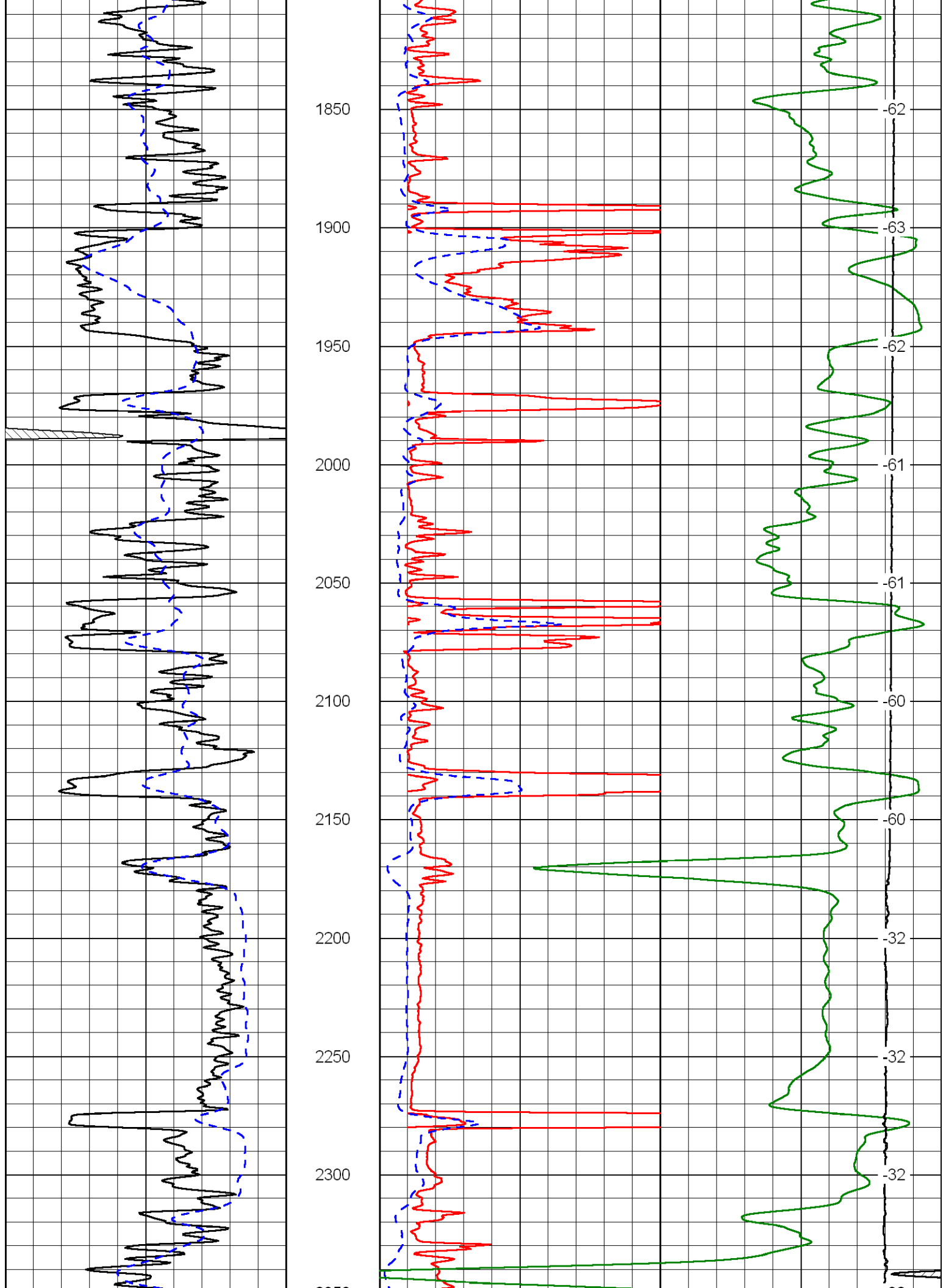
0 Shallow Resistivity 50
0 Deep Resistivity 50
1000 Conductivity 0
15000 Line Tension 0
50 Shallow Resistivity 50
50 Deep Resistivity 50

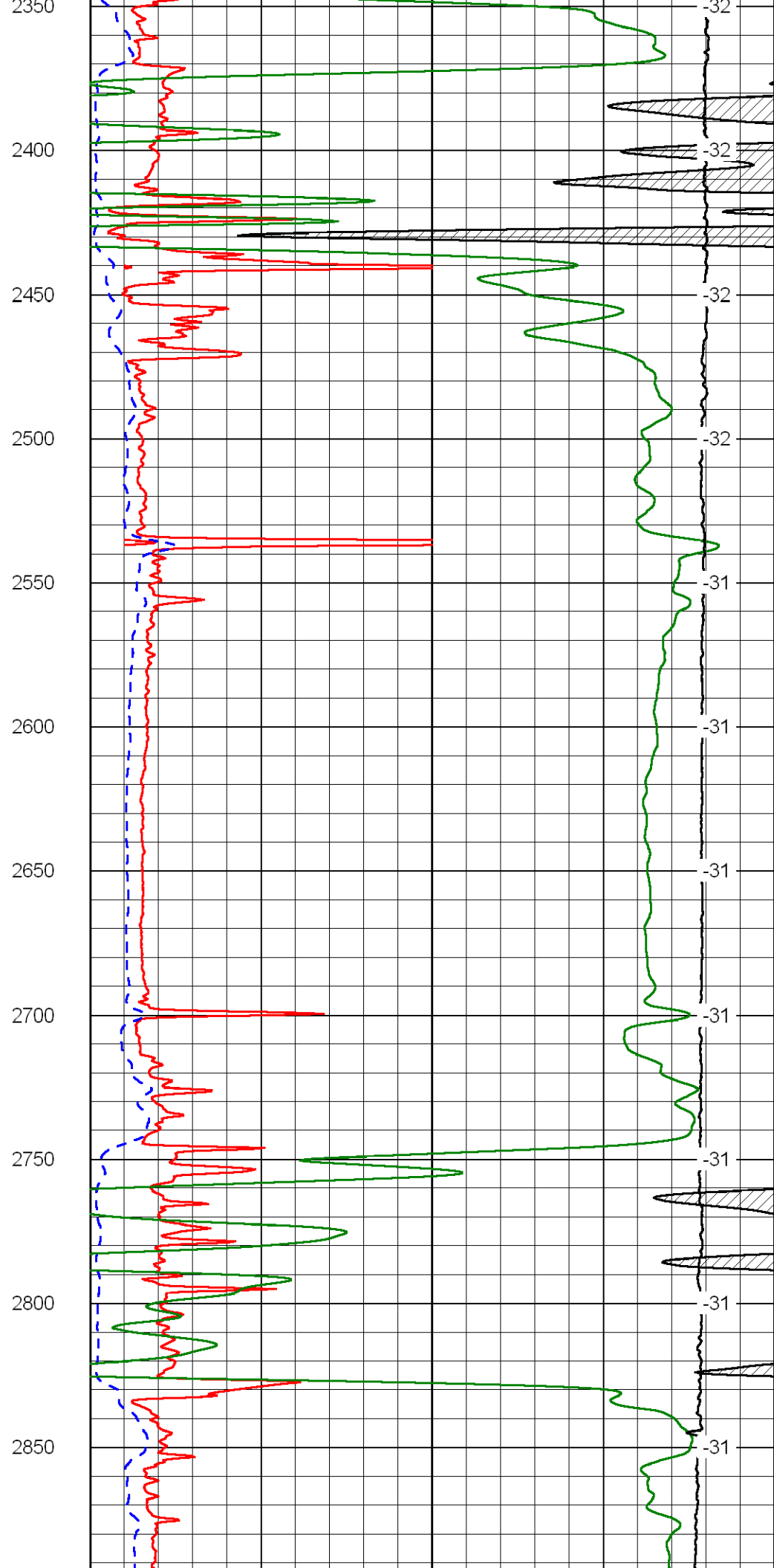
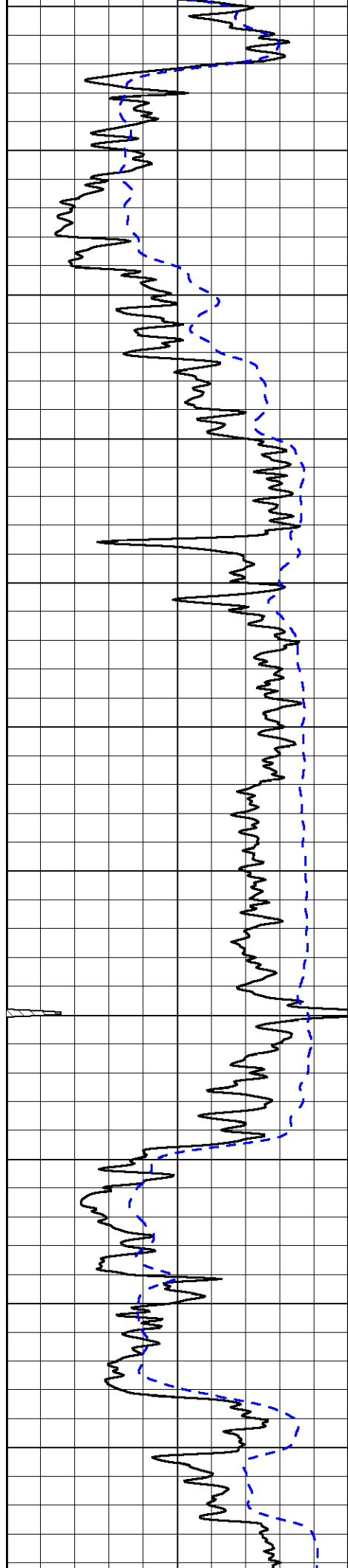
LSPD

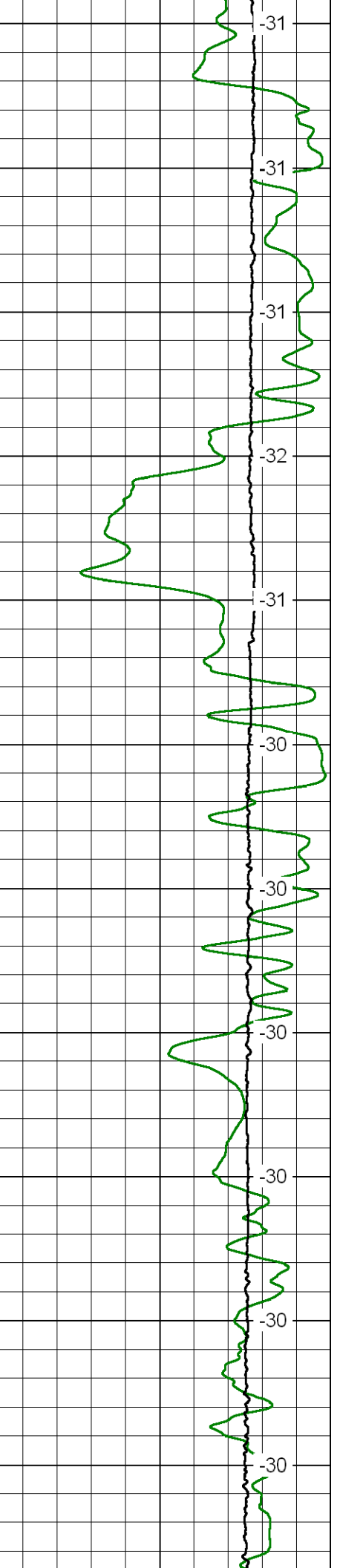
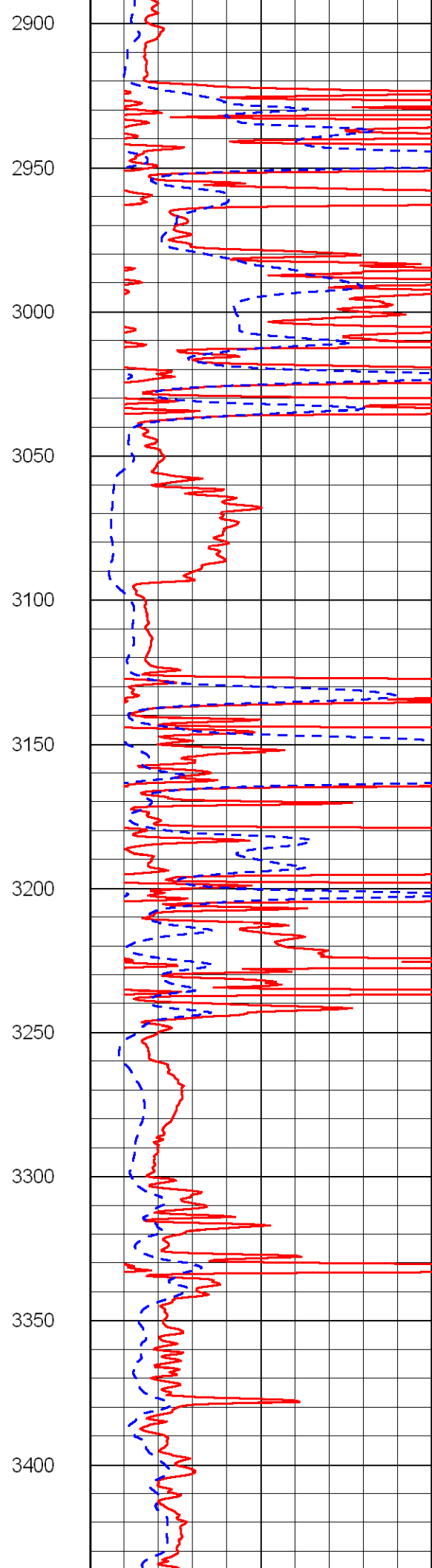
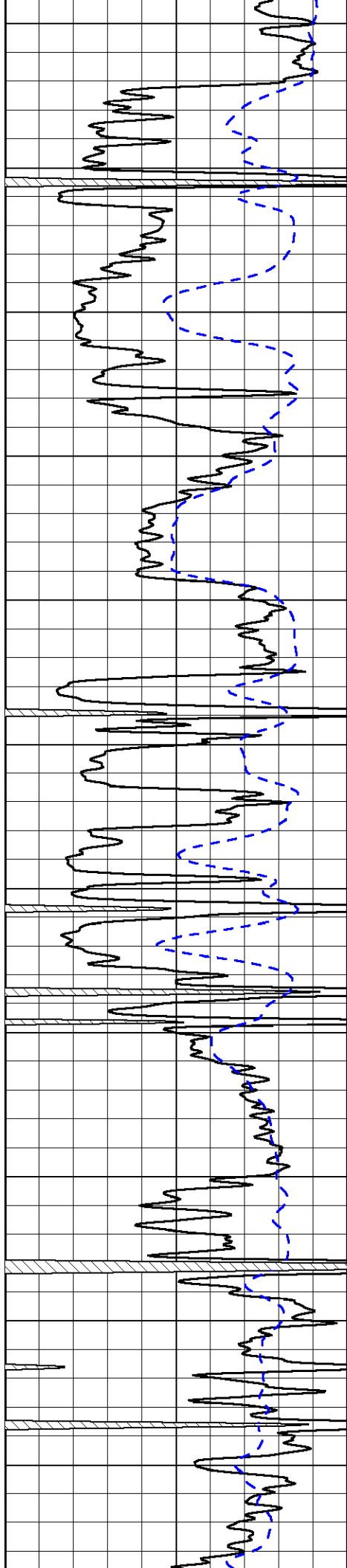


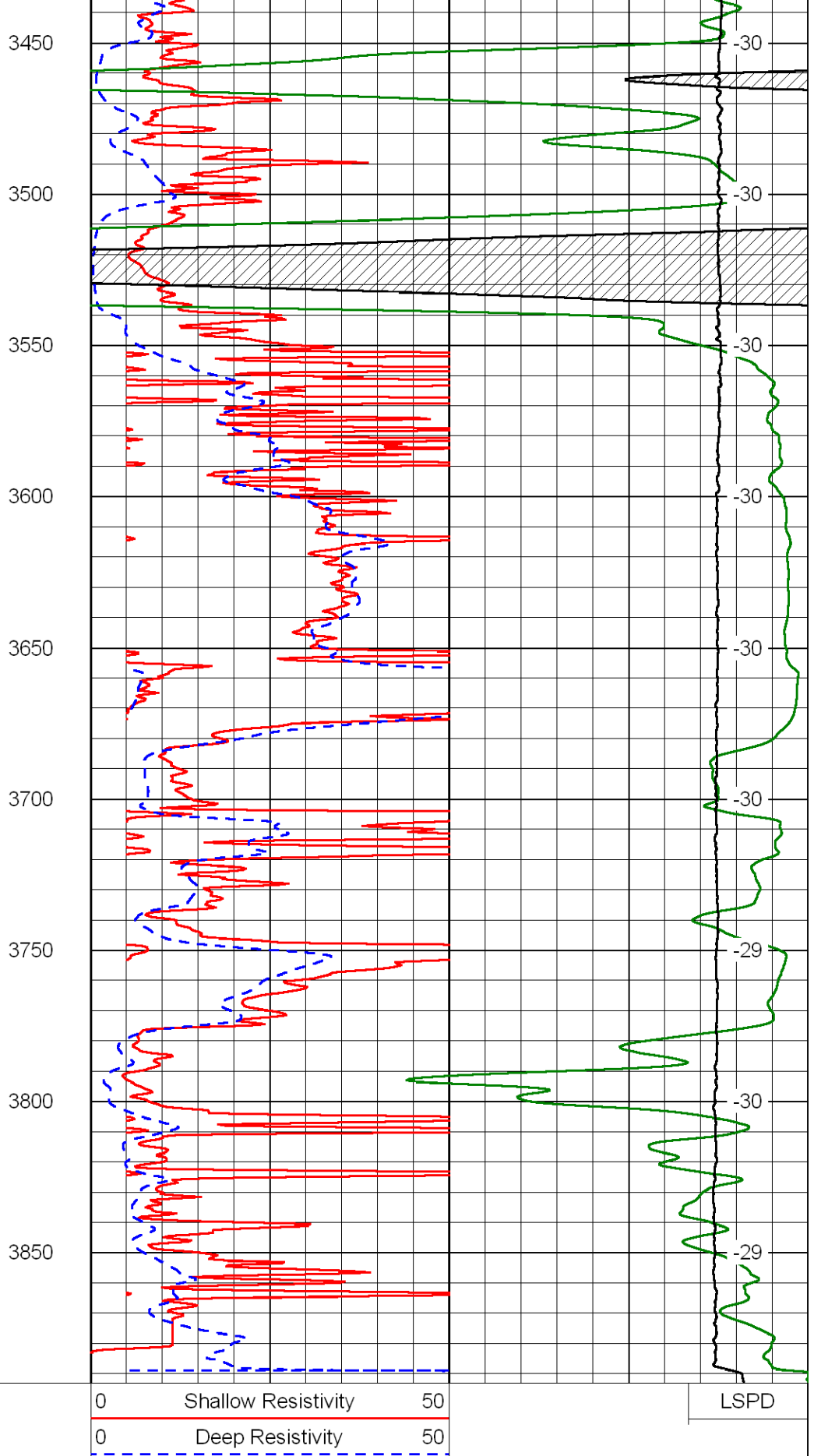
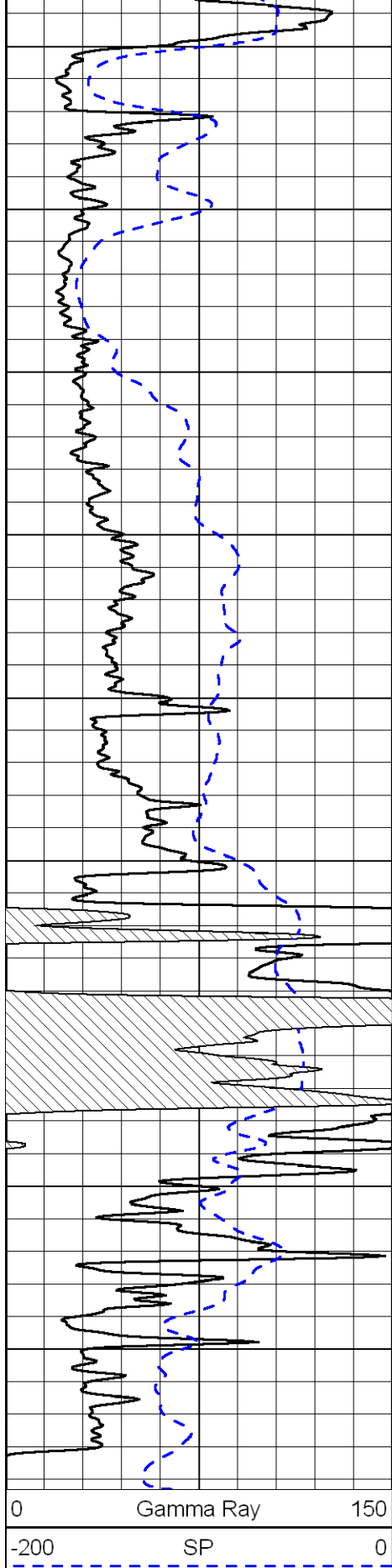












0 150

-200 0

0 50

0 50

1000 0

15000 0

50 Shallow Resistivity 500

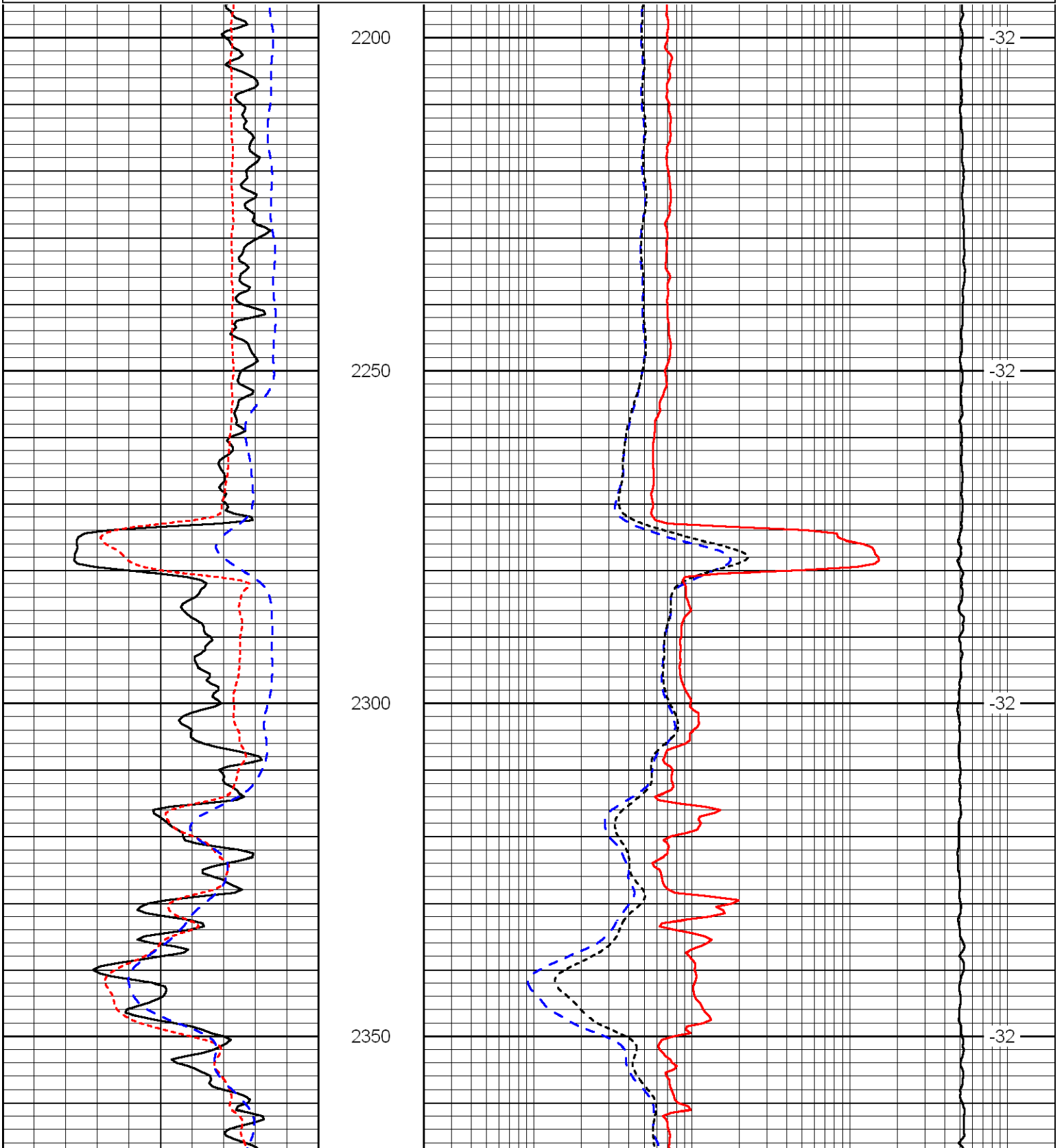
50 Deep Resistivity 500

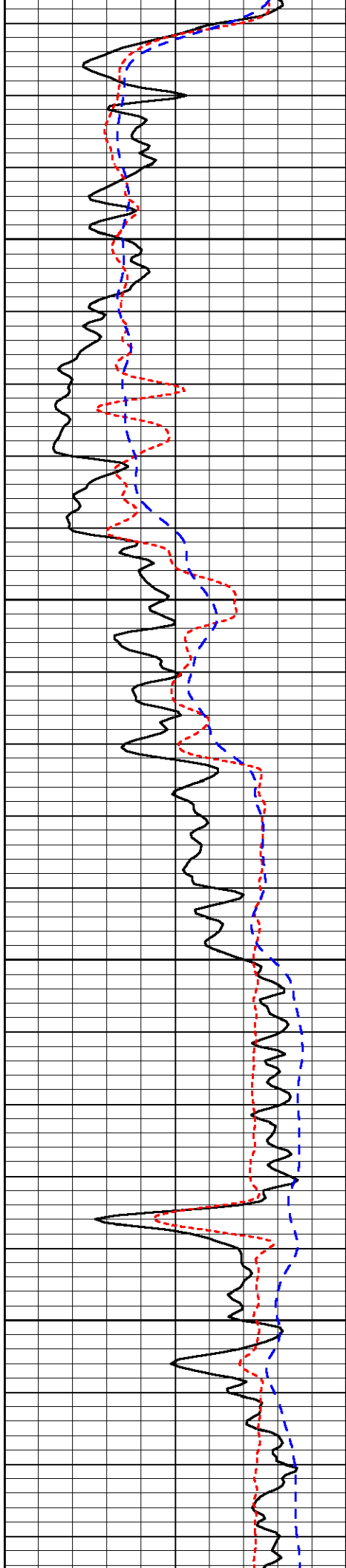
Database File: aas_schrag_1hd.db
 Dataset Pathname: DIL/aasstk
 Presentation Format: dil
 Dataset Creation: Fri Apr 20 10:52:51 2012
 Charted by: Depth in Feet scaled 1:240

0	Gamma Ray	150
-160	RXO/RT	40
-200	SP	0

0.2	Deep Resistivity	2000
0.2	Medium Resistivity	2000
0.2	Shallow Resistivity	2000
10000	Line Tension	0

LSPD



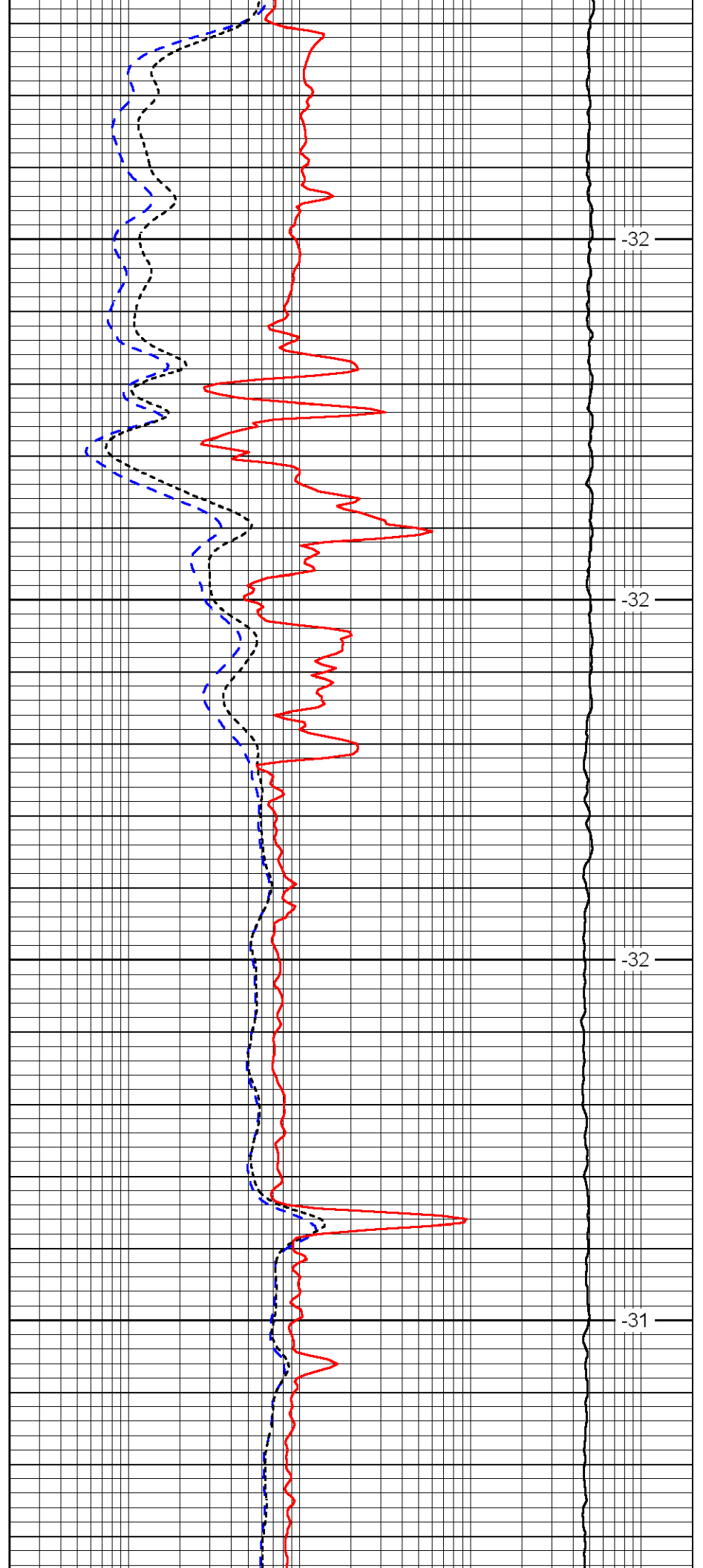


2400

2450

2500

2550

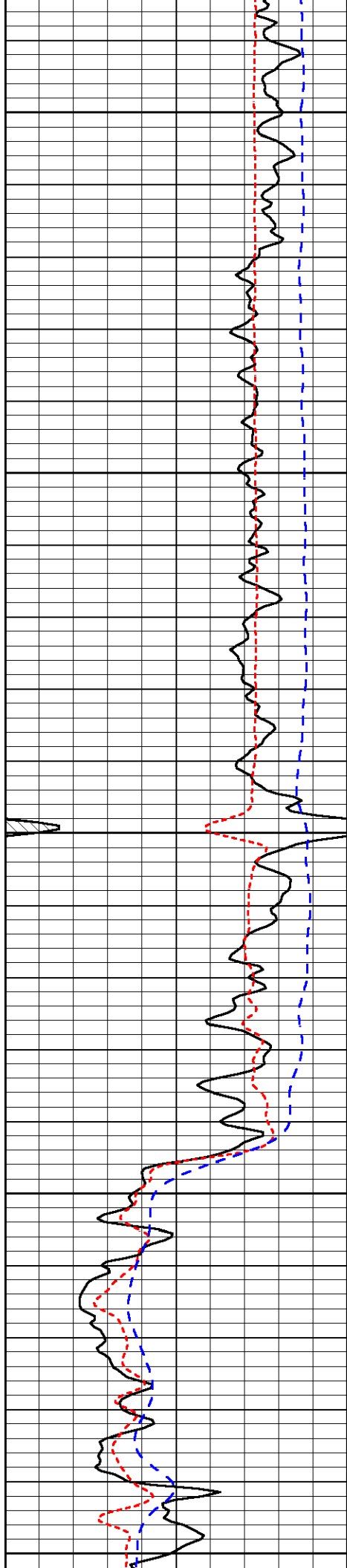


-32

-32

-32

-31



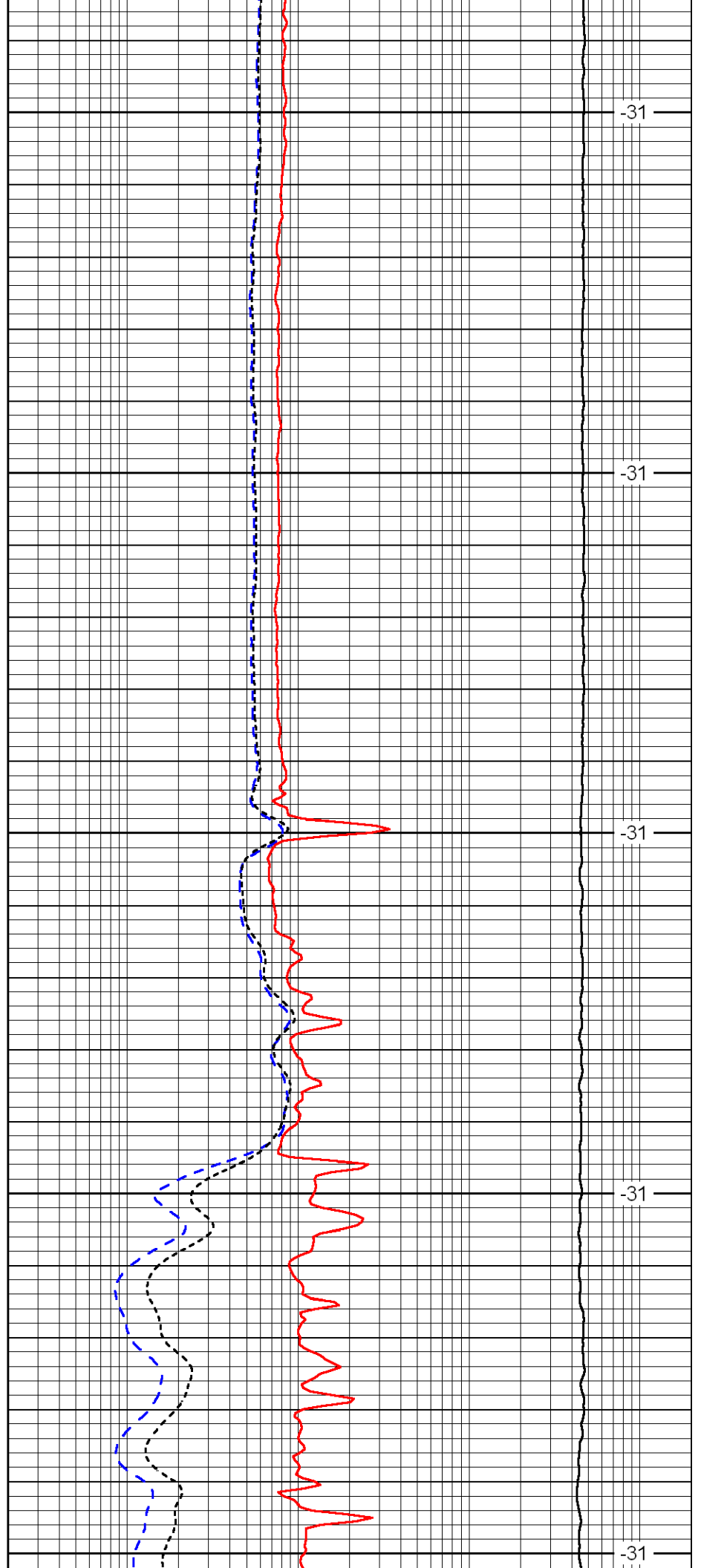
2600

2650

2700

2750

2800



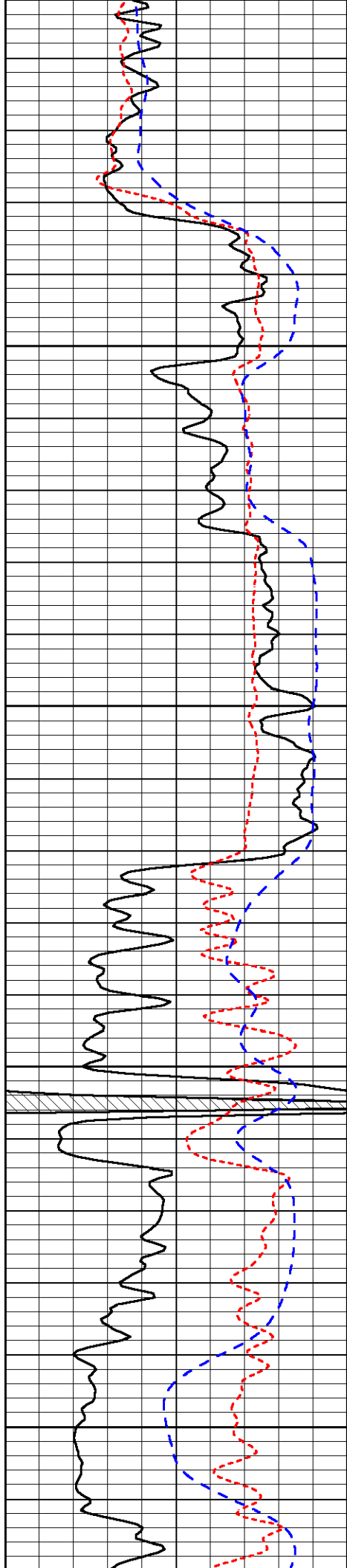
-31

-31

-31

-31

-31

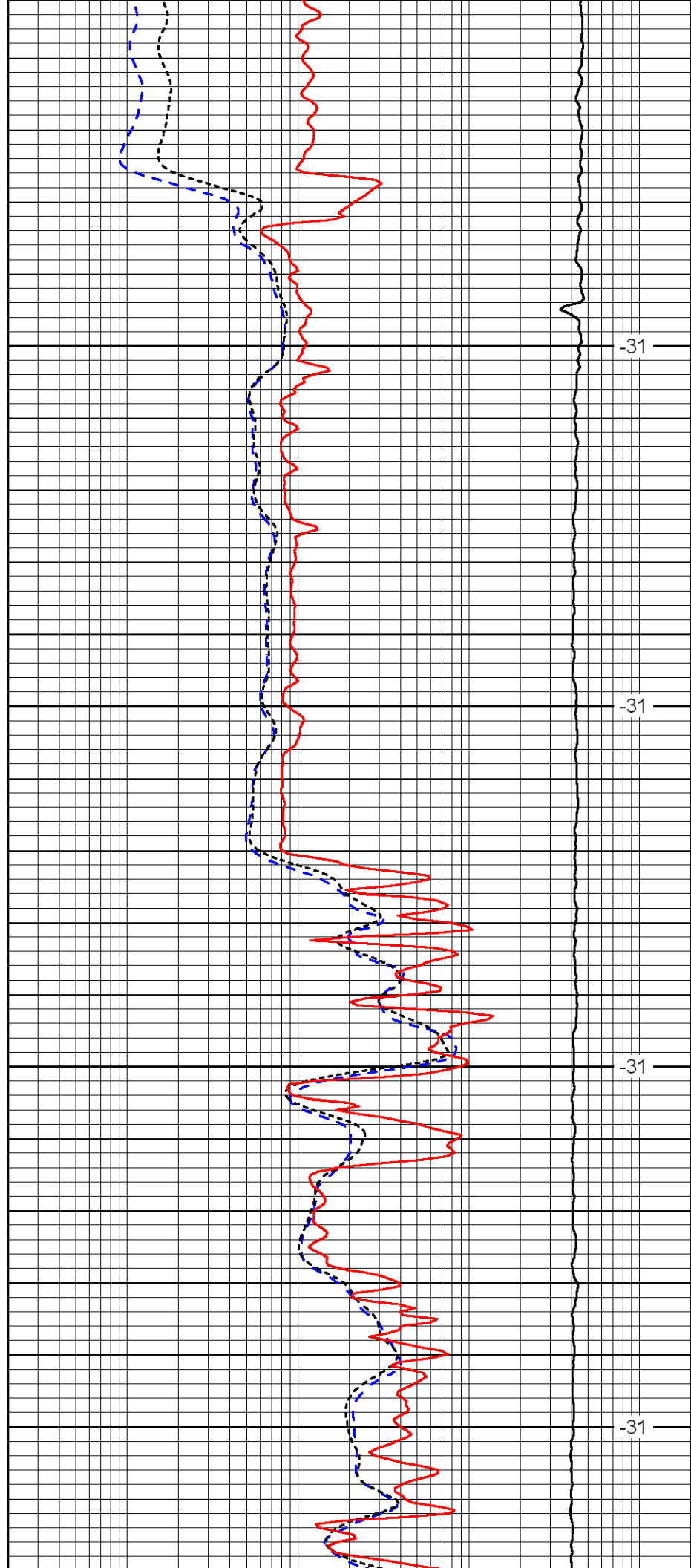


2850

2900

2950

3000

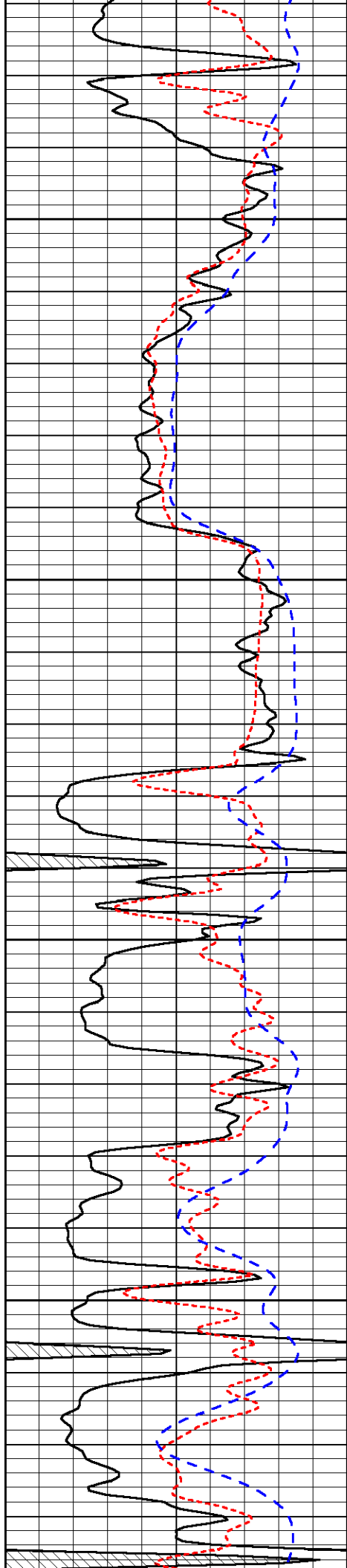


-31

-31

-31

-31

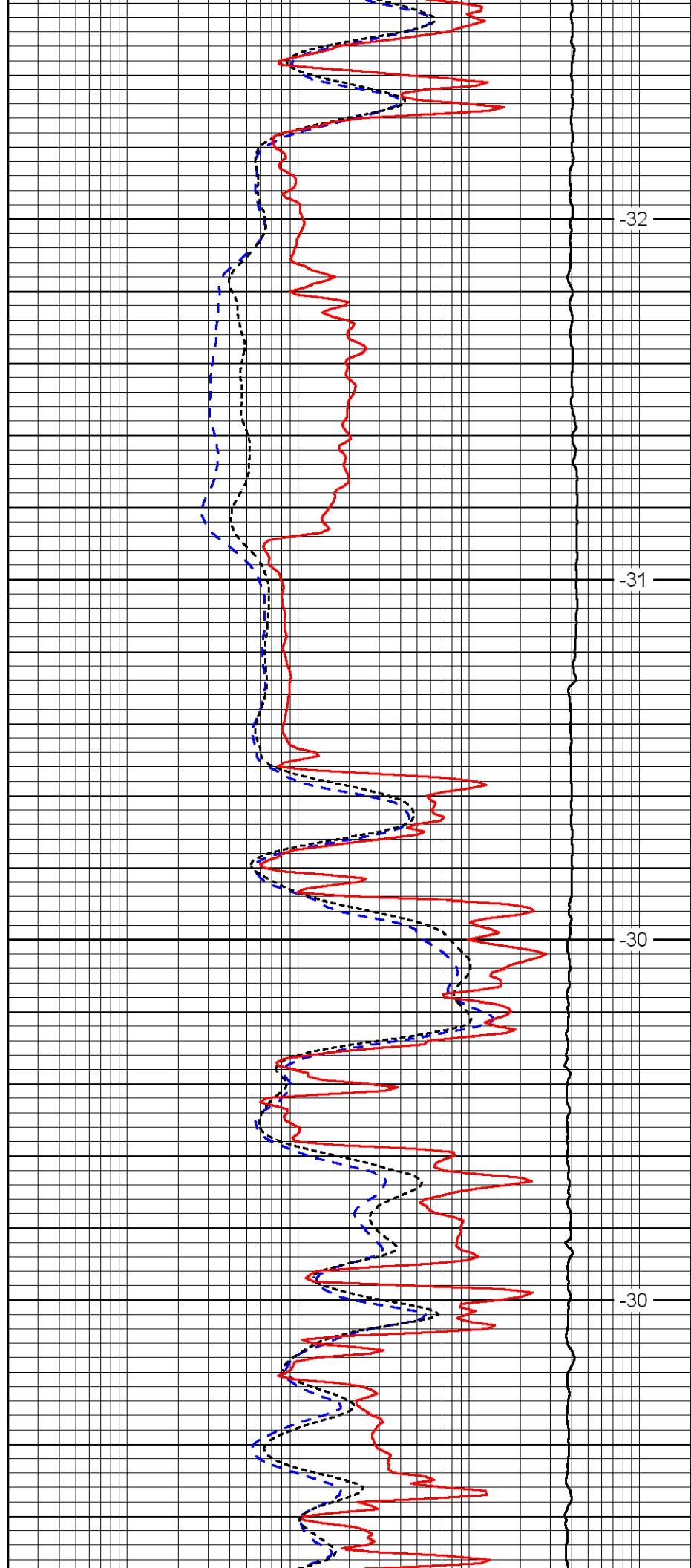


3050

3100

3150

3200

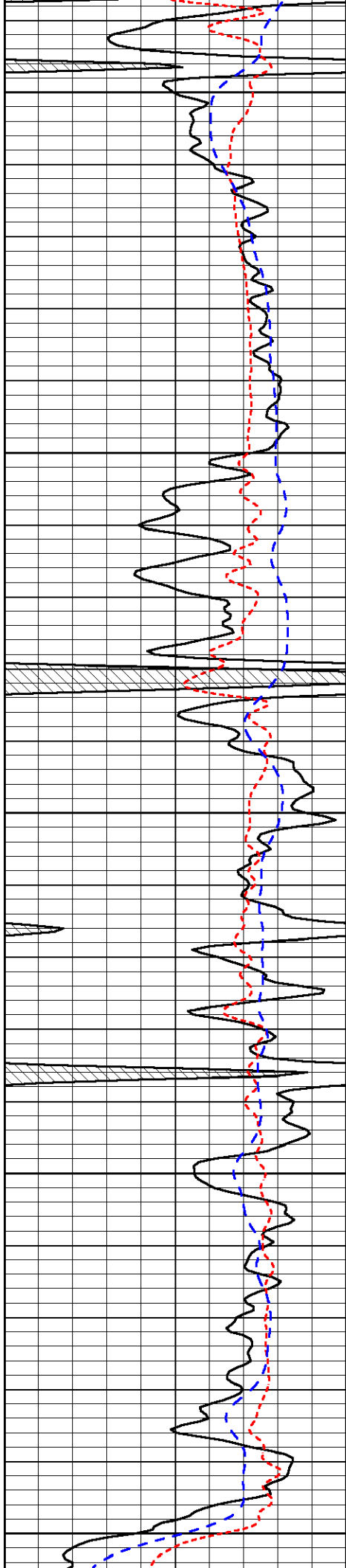


-32

-31

-30

-30



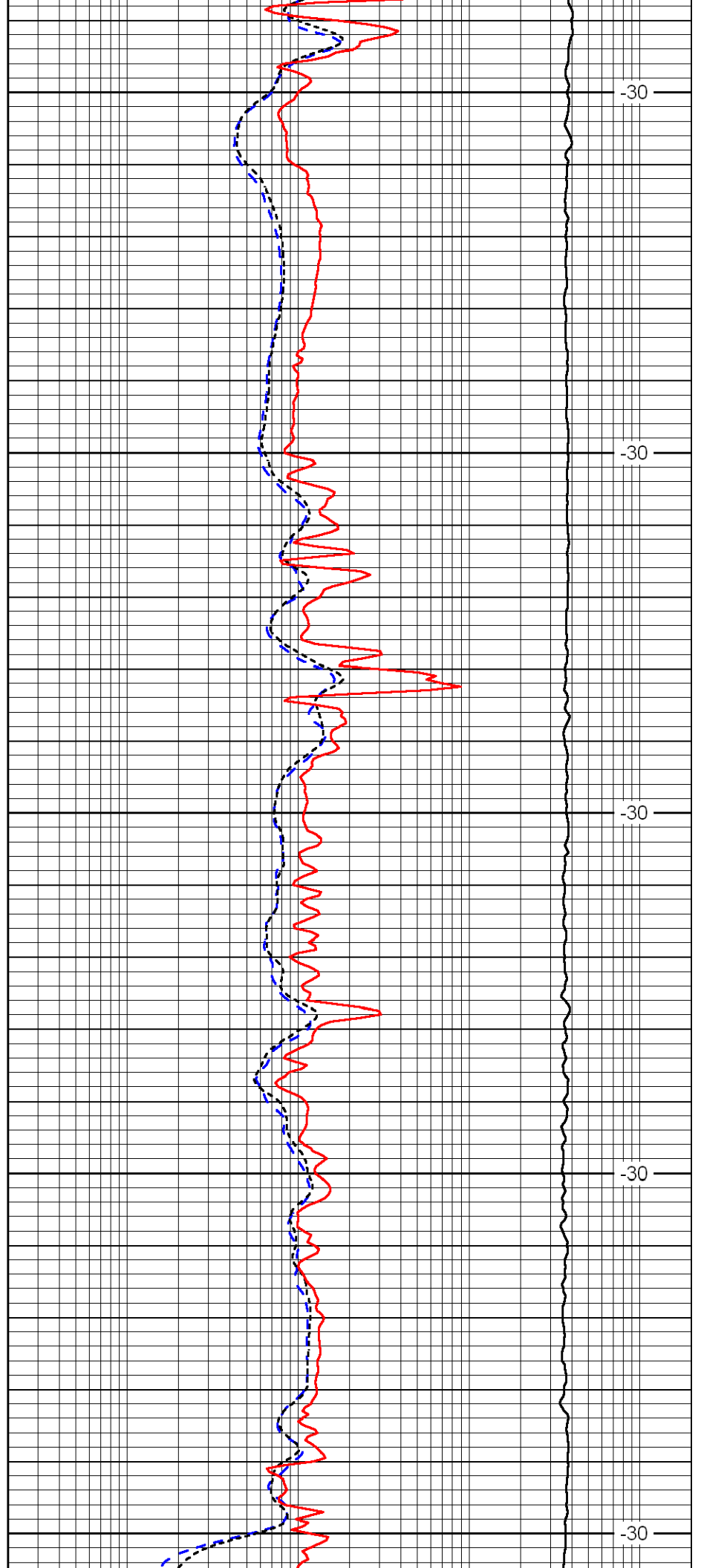
3250

3300

3350

3400

3450



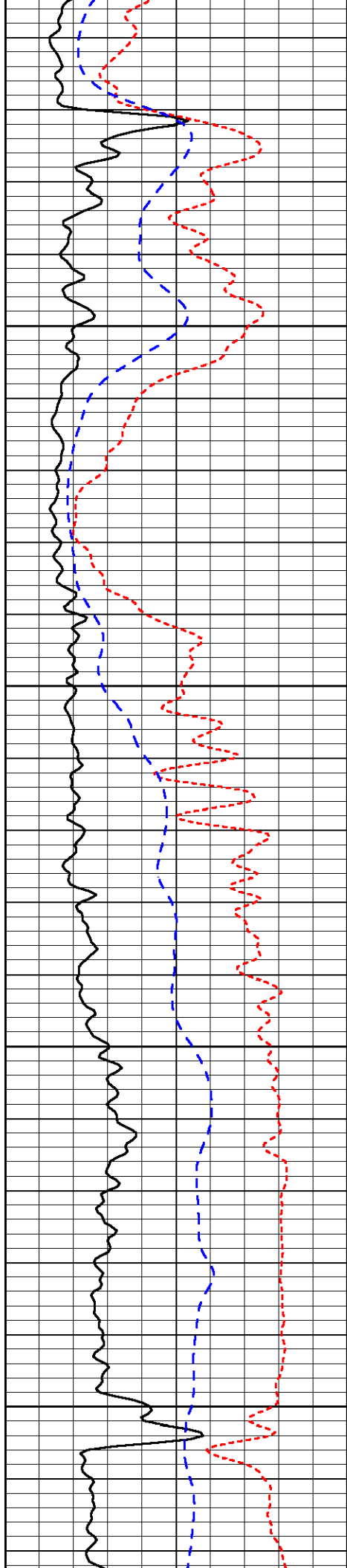
30

30

30

30

30

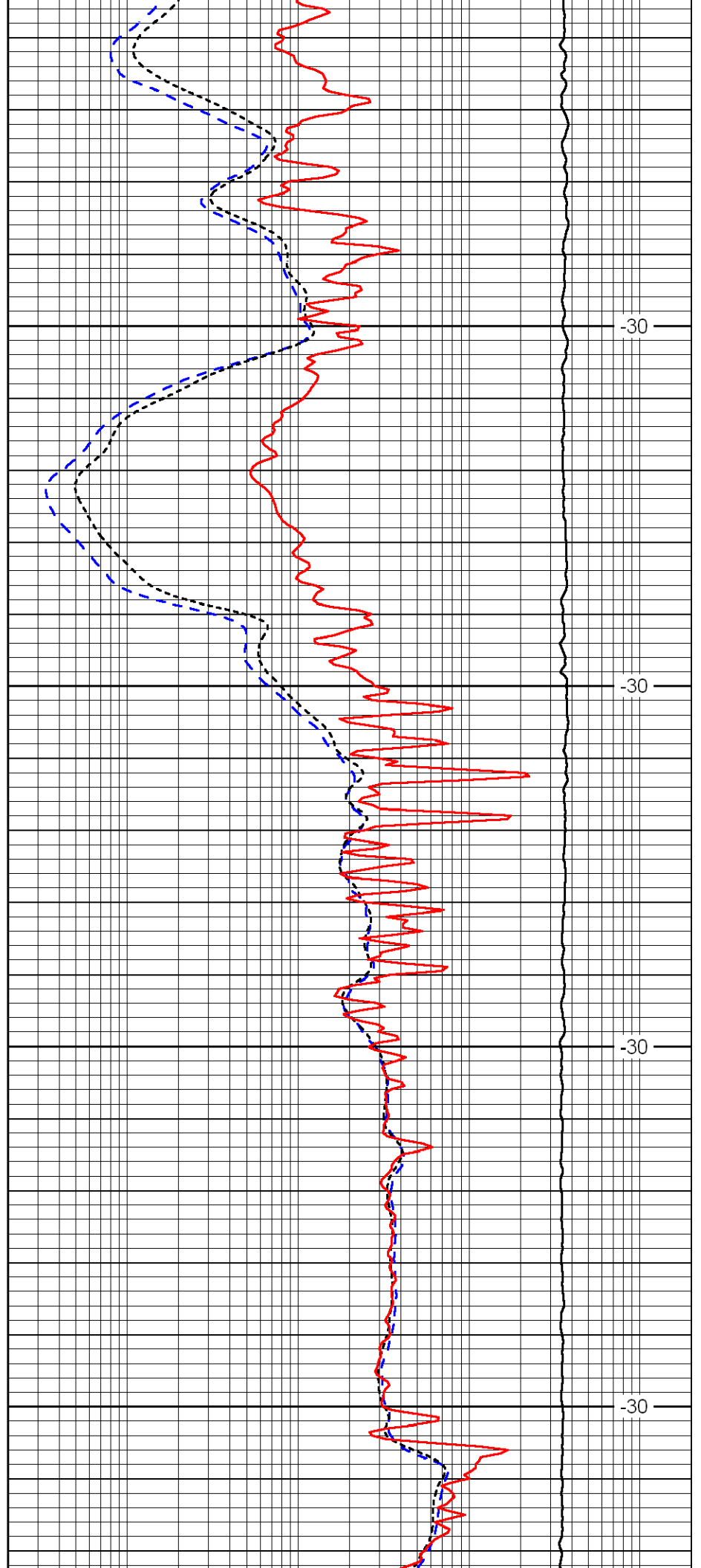


3500

3550

3600

3650

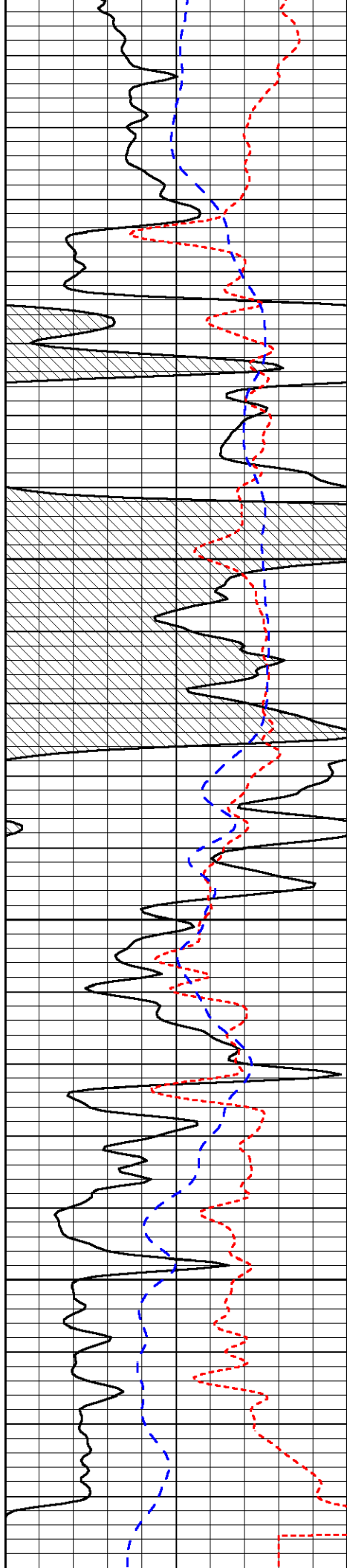


-30

-30

-30

-30

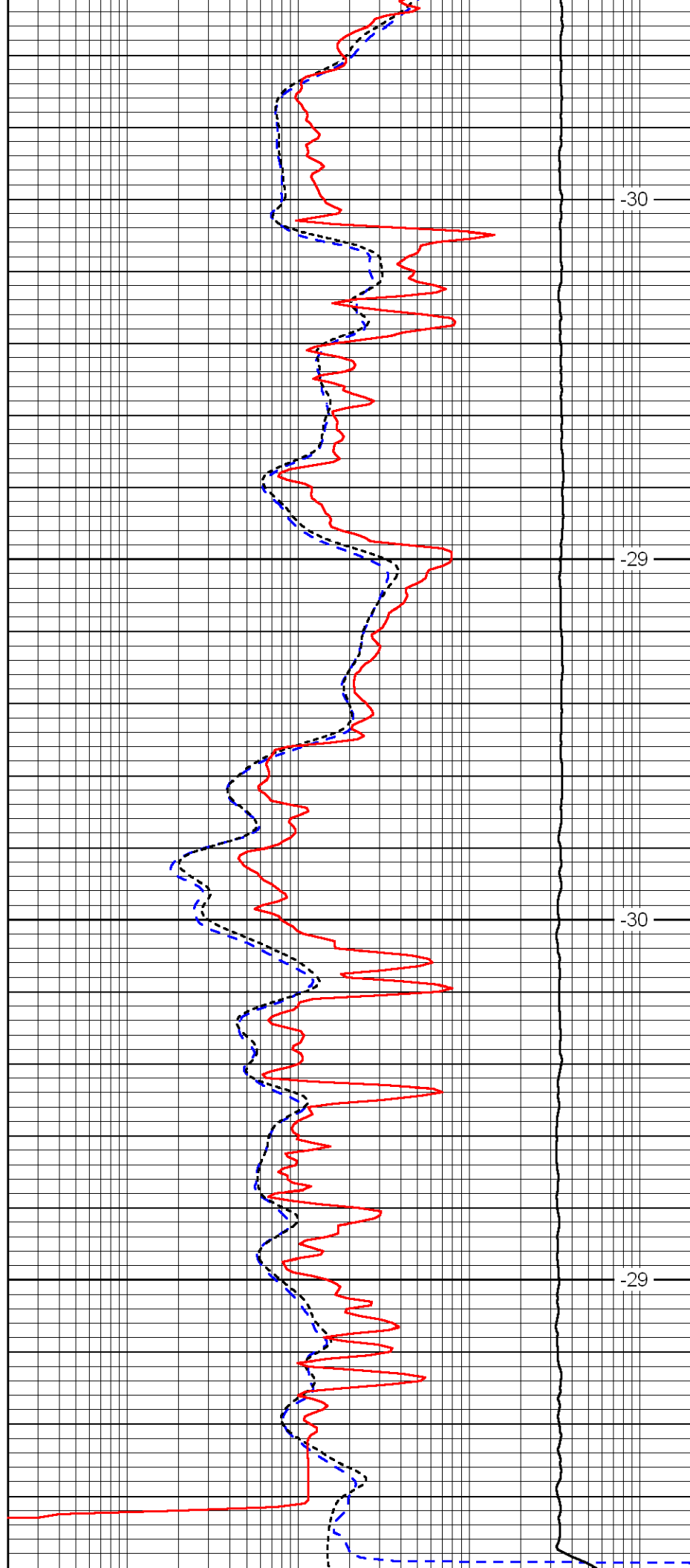


3700

3750

3800

3850



-30

-29

-30

-29

0	Gamma Ray	150
-160	RXO/RT	40
-200	SP	0

0.2	Deep Resistivity	2000
0.2	Medium Resistivity	2000
0.2	Shallow Resistivity	2000
10000	Line Tension	0

LSPD