

Company	King Oil Operations	SEC 11	TWP 13S	RGE 20W	Elevation	2130'	Other Services	CDNL
Well	King # A-2	Permanent Datum	Ground Level	KB 5 AGL	K.B. 2135'	D.F. 2134'	G.L. 2130'	
Field	Worth Southeast	Log Measured From	KB 5 AGL					
County	Ellis	Drilling Measured From	KB					
Location:	380 FNL & 335 FEL	API # :	15 051 26297					
State	Kansas							
Date	4-17-12							
Depth Driller	3863							

<<< Fold Here >>>

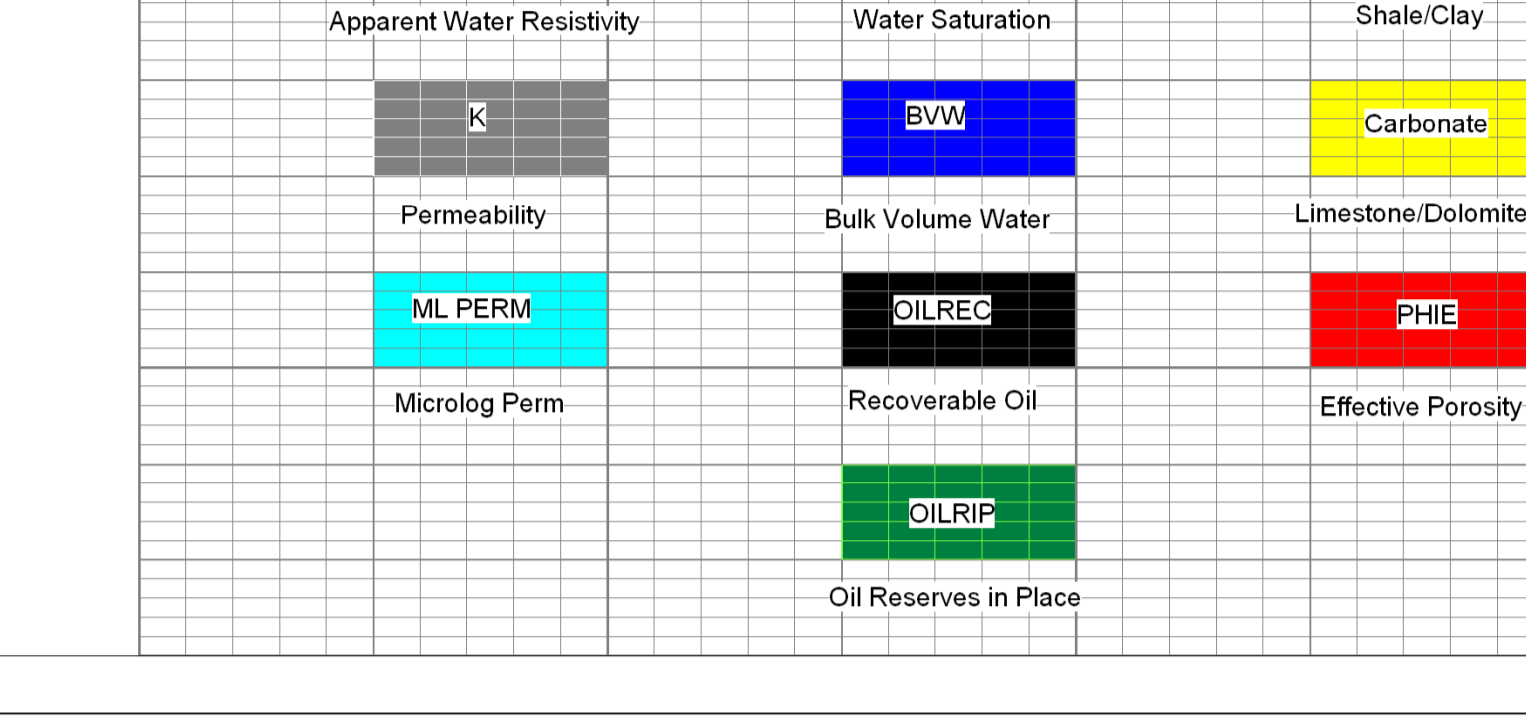
All interpretations are opinions based on inferences from electrical or other measurements and we cannot and do not guarantee the accuracy or correctness of any interpretation, and we shall not, except in the case of gross or willful negligence on our part, be liable or responsible for any loss, costs, damages, or expenses incurred or sustained by anyone resulting from any interpretation made by any of our officers, agents or employees. These interpretations are also subject to our general terms and conditions set out in our current Price Schedule.

Comments

Thanks for using The Perforators, Hays, KS. 785-621-4604

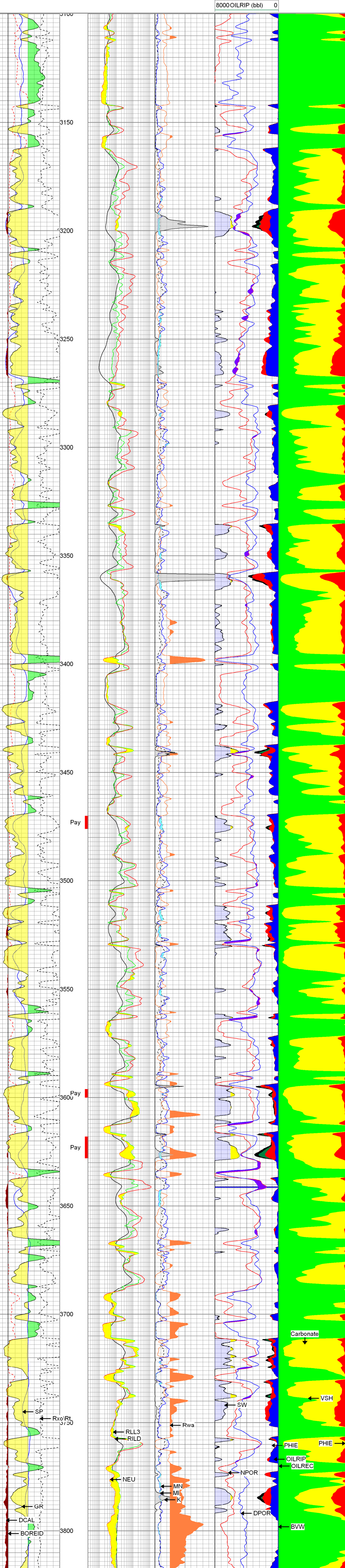
The Perforators LLC Main Pass

Database File: gcolorchart.db
 Dataset Pathname: pass3.1
 Presentation Format: color
 Dataset Creation: Wed Nov 17 10:09:46 2010
 Charted by: Depth in Feet scaled 1:240



Database File: koking#a2oh.db
 Dataset Pathname: oh2
 Presentation Format: kohcgi
 Dataset Creation: Wed Apr 18 14:53:35 2012
 Charted by: Depth in Feet scaled 1:240

0	GR (GAPI)	150	RILD	0	MI (Ohm-m)	60	100	SW (%)	-100	0	VSH (%)	100
-100	SP (mV)	100	(Ohm-m)	2000	MN (Ohm-m)	60	50	PHIE (%)	0	50	PHIE (%)	0
6	DCAL (in)	16	RLL3	0	Rwa (Ohm-m)	1	50	BVW (%)	0	0		
6	BOREID (in)	16	(Ohm-m)	2000	K	5	30	NPOR (pu)	-10			
140	Rxo/Rt	-60	NEU (NAPI)	700			30	DPOR (pu)	-10			
							2000	OILREC (bb)	0			
							8000	OILRIP (bb)	0			



0	GR (GAPI)	150	RILD	0	MI (Ohm-m)	60	100	SW (%)	-100	0	VSH (%)	100
-100	SP (mV)	100	(Ohm-m)	2000	MN (Ohm-m)	60	50	PHIE (%)	0	50	PHIE (%)	0
6	DCAL (in)	16	RLL3	0	Rwa (Ohm-m)	1	50	BVW (%)	0	0		
6	BOREID (in)	16	(Ohm-m)	2000	K	5	30	NPOR (pu)	-10			
140	Rxo/Rt	-60	NEU (NAPI)	700			30	DPOR (pu)	-10			
							2000	OILREC (bb)	0			
							8000	OILRIP (bb)	0			