



SUPERIOR
Hays,
Kansas

**DUAL
INDUCTION
LOG**

Company PELICAN HILL OIL & GAS INC.
Well NELSON #2-7
Field
County TREGO
State KANSAS

Company PELICAN HILL OIL & GAS INC.
Well NELSON #2-7
Field
County TREGO State KANSAS

Location: 1442' FSL & 1500' FEL
API # : 15-195-22757-0000
Permanent Datum GROUND LEVEL Elevation 2114
Log Measured From KELLY BUSHING 9' A.G.L.
Drilling Measured From KELLY BUSHING
SEC 7 TWP 11S RGE 21W
Other Services
DIL/FRAC
MEL/SON
Elevation
K.B. 2123
D.F. 2121
G.L. 2114

Date	4/2/12
Run Number	ONE
Depth Driller	3841
Depth Logger	3844
Bottom Logged Interval	3842
Top Log Interval	0
Casing Driller	8 5/8"@270'
Casing Logger	269'
Bit Size	7 7/8"
Type Fluid in Hole	CHEMICAL MUD
Density / Viscosity	9.4/56
pH / Fluid Loss	11.0/7.2
Source of Sample	FLOWLINE
Rm @ Meas. Temp	0.80@71F
Rmt @ Meas. Temp	0.60@71F
Rmc @ Meas. Temp	0.96@71F
Source of Rmf / Rmc	MEASUREMENT
Rm @ BHT	0.49@115F
Time Circulation Stopped	2 HOURS
Time Logger on Bottom	
Maximum Recorded Temperature	115F
Equipment Number	4010
Location	HAYS, KANSAS
Recorded By	JEFF GRONEWEG
Witnessed By	MARC DOWNING

<<< Fold Here >>>

All interpretations are opinions based on inferences from electrical or other measurements and we cannot and do not guarantee the accuracy or correctness of any interpretation, and we shall not, except in the case of gross or willful negligence on our part, be liable or responsible for any loss, costs, damages, or expenses incurred or sustained by anyone resulting from any interpretation made by any of our officers, agents or employees. These interpretations are also subject to our general terms and conditions set out in our current Price Schedule.

Comments

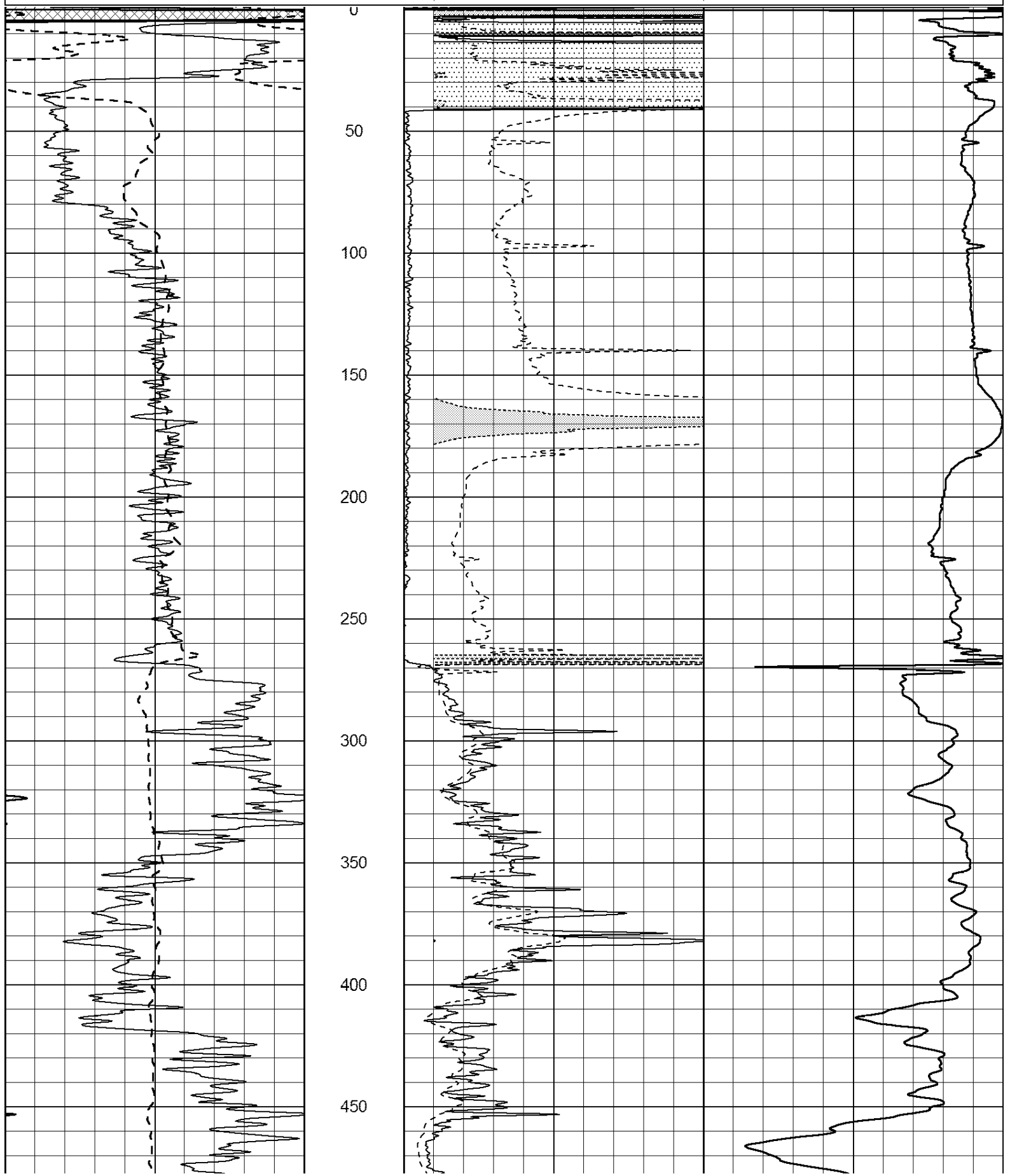
THANK YOU FOR USING SUPERIOR WELL SERVICE HAYS, KANSAS (785) 628-6395
DIRECTIONS
RIGA, KS - 12 MILES NORTH TO RD A - 2 MILES WEST TO RD 360
2 MILES SOUTH - EAST & NORTH INTO ON NORTH SIDE OF TANK BATTERY

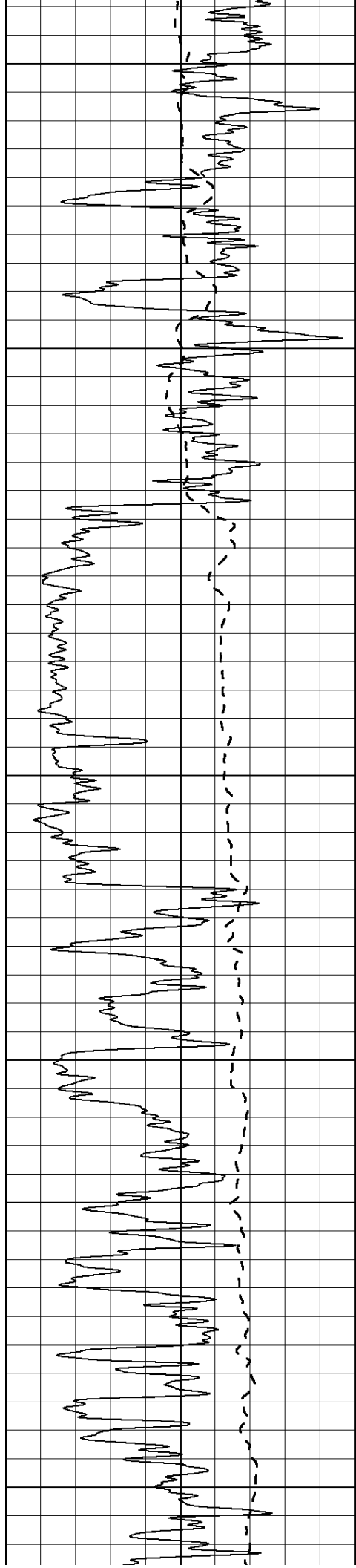
0	Gamma Ray (GAPI)	150
-100	SP (mV)	100

0	RLL3 (Ohm-m)	50
0	RILD (Ohm-m)	50

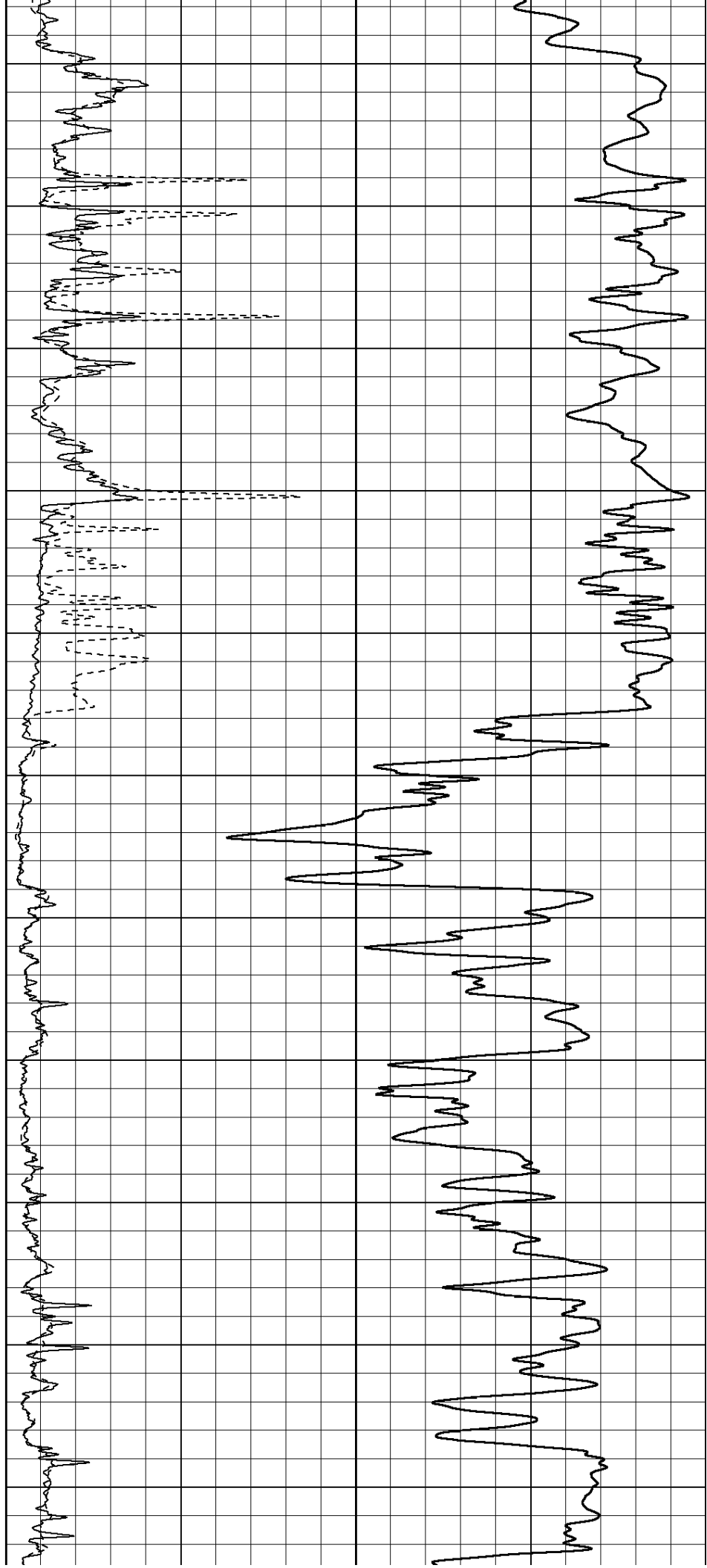
1000	CILD (mmho/m)	0
------	---------------	---

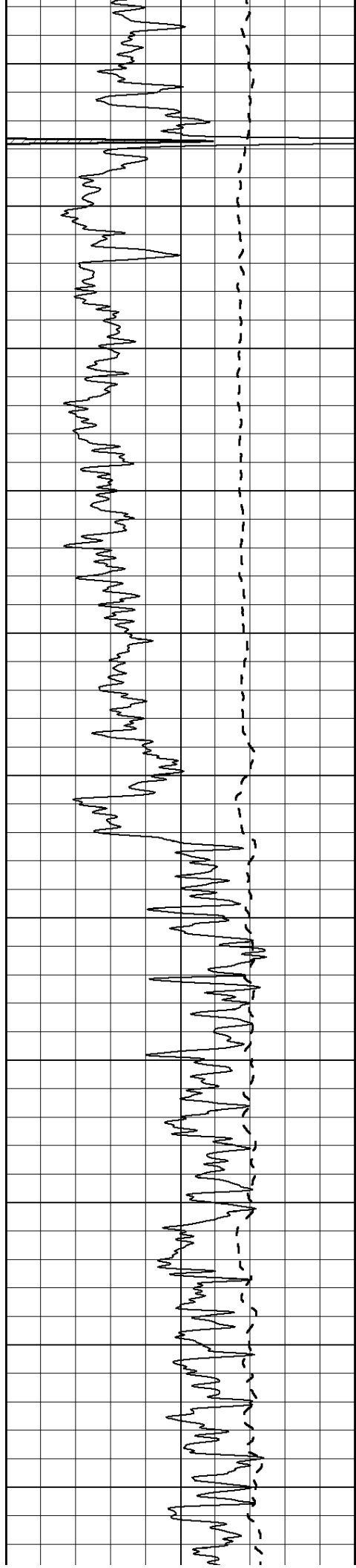
50	RILD X10 (Ohm-m)	500
50	RLL3 X10 (Ohm-m)	500



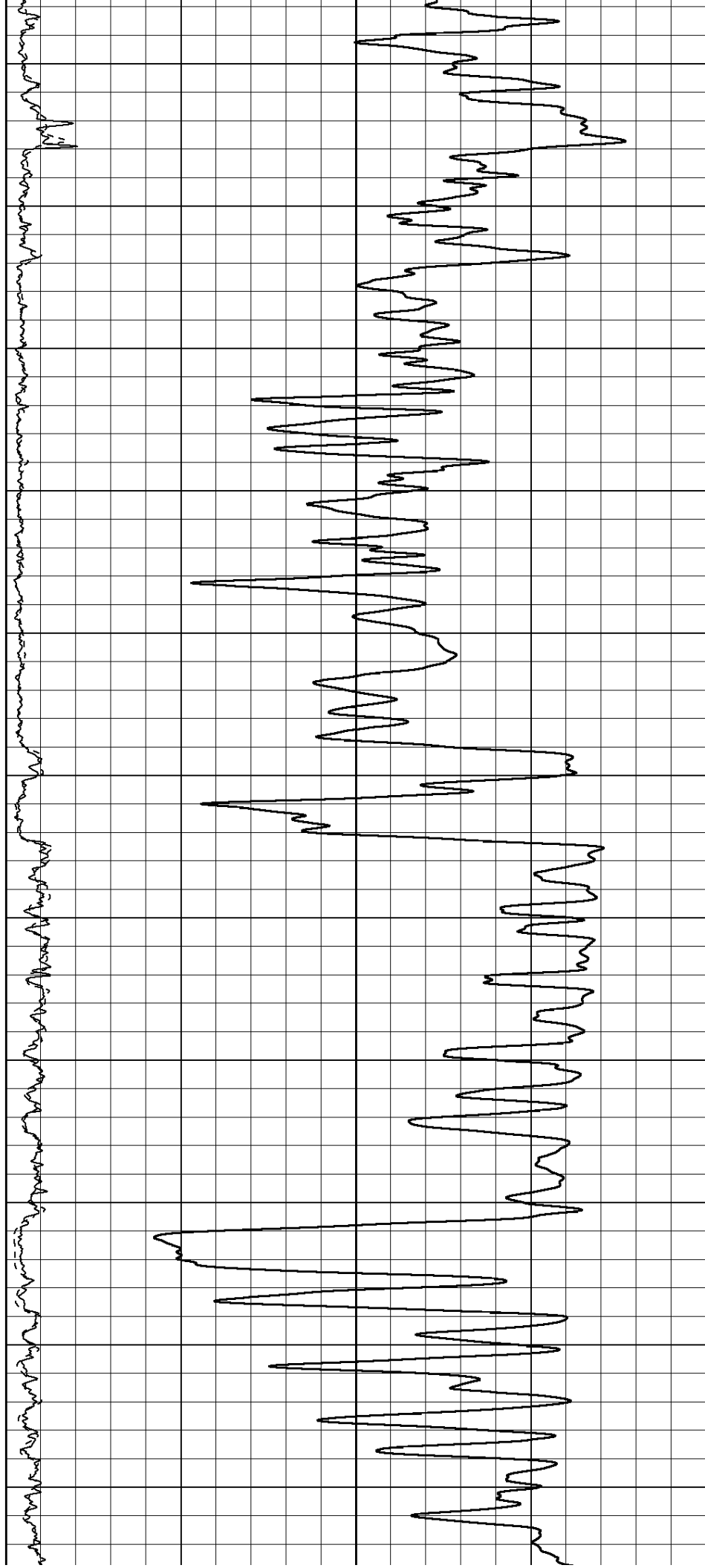


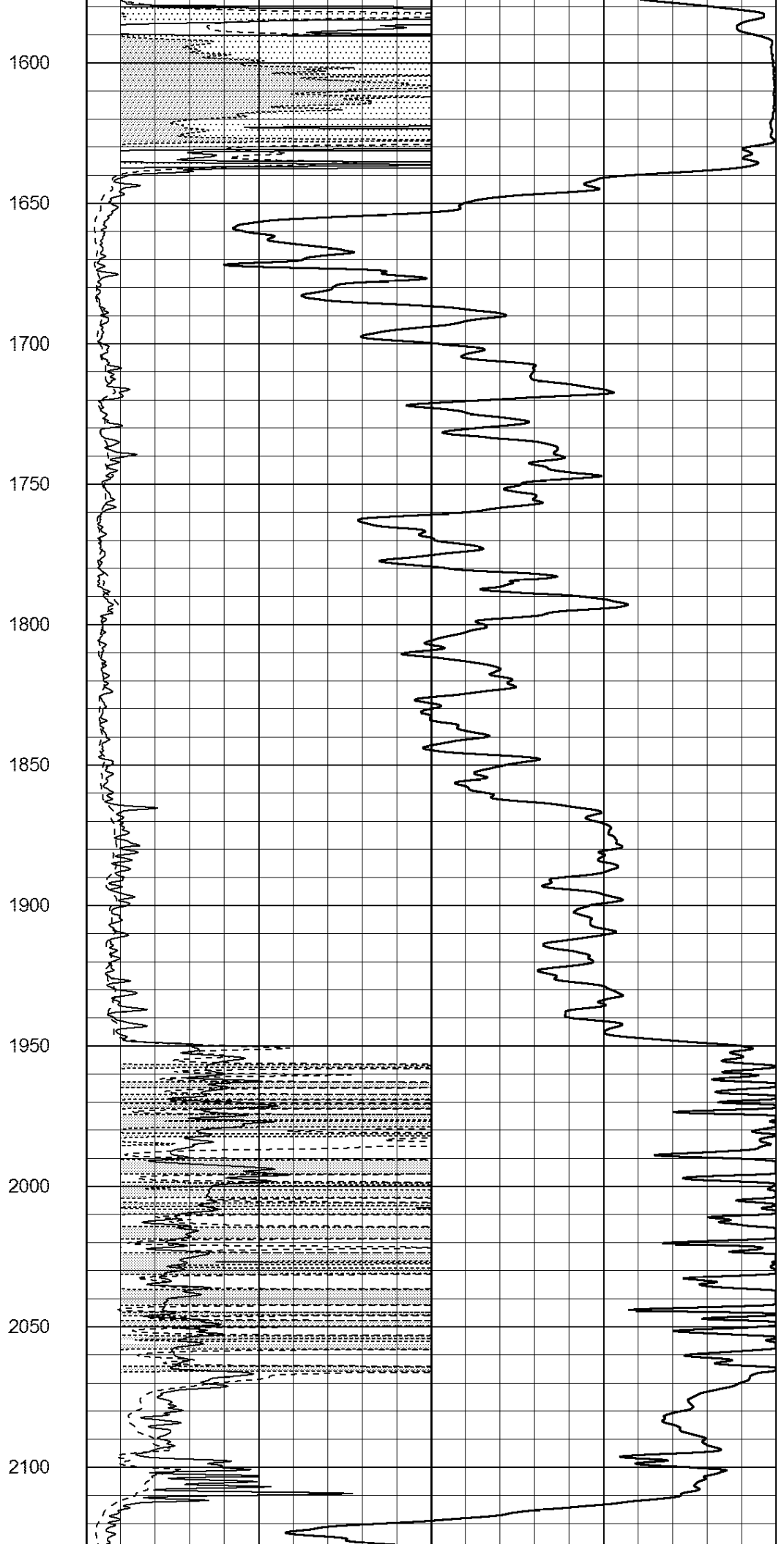
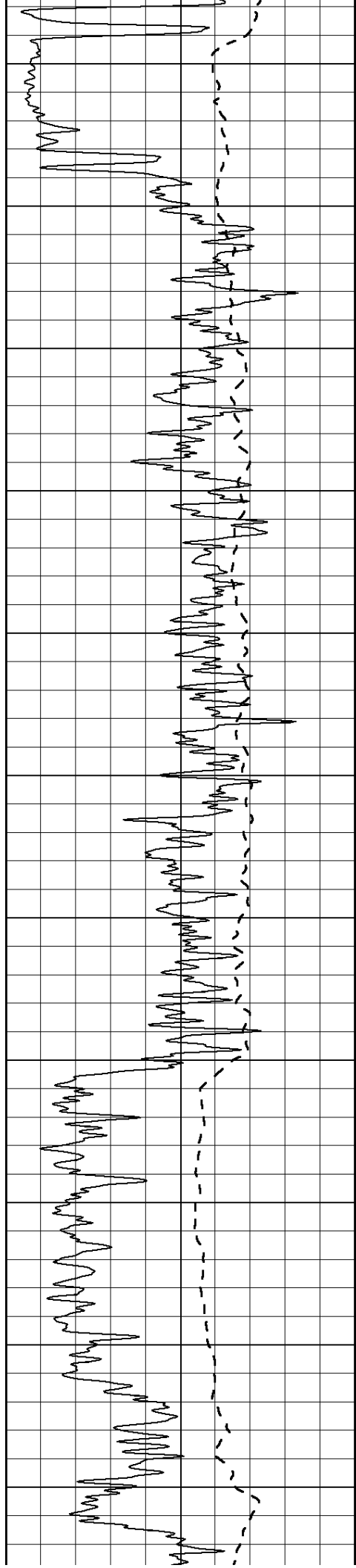
500
550
600
650
700
750
800
850
900
950
1000

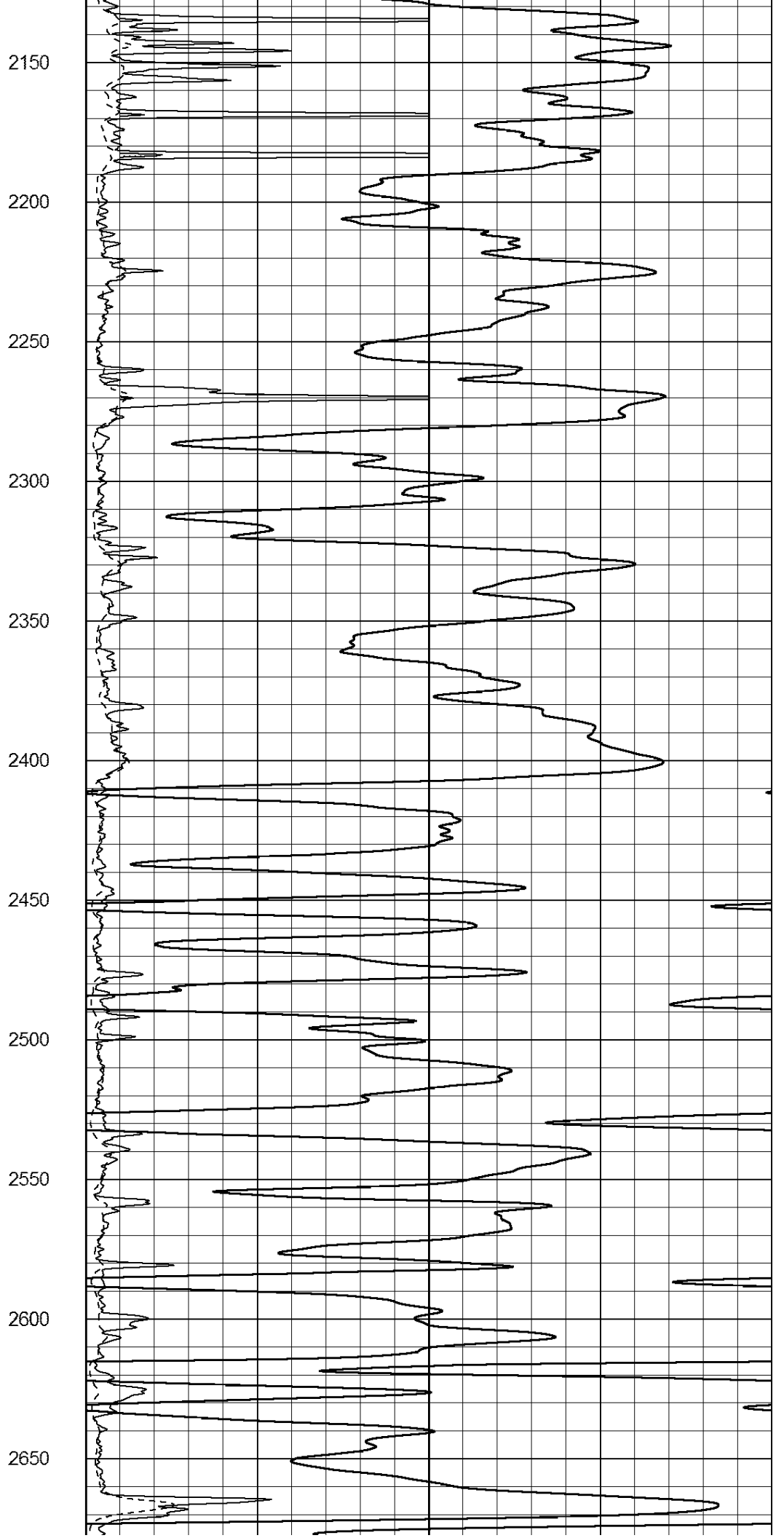
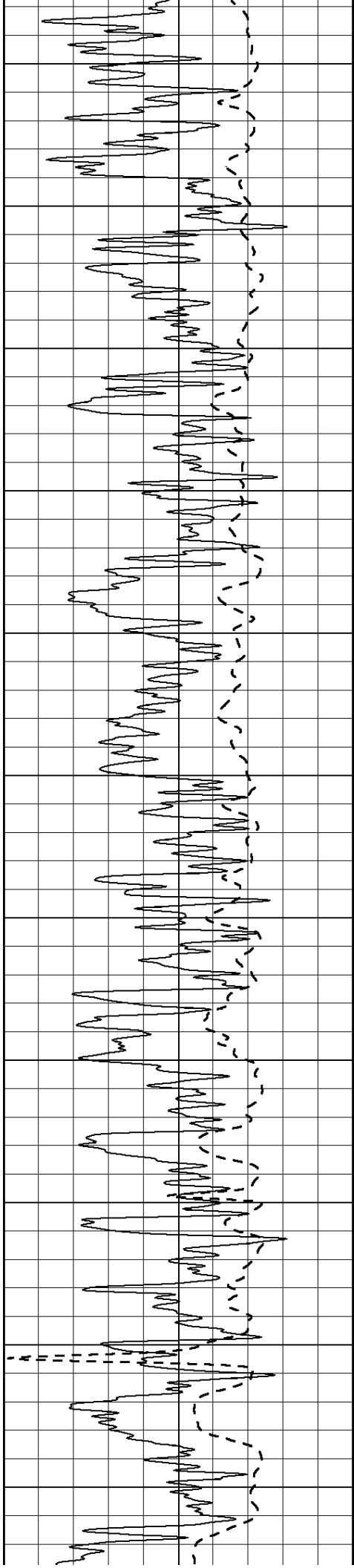


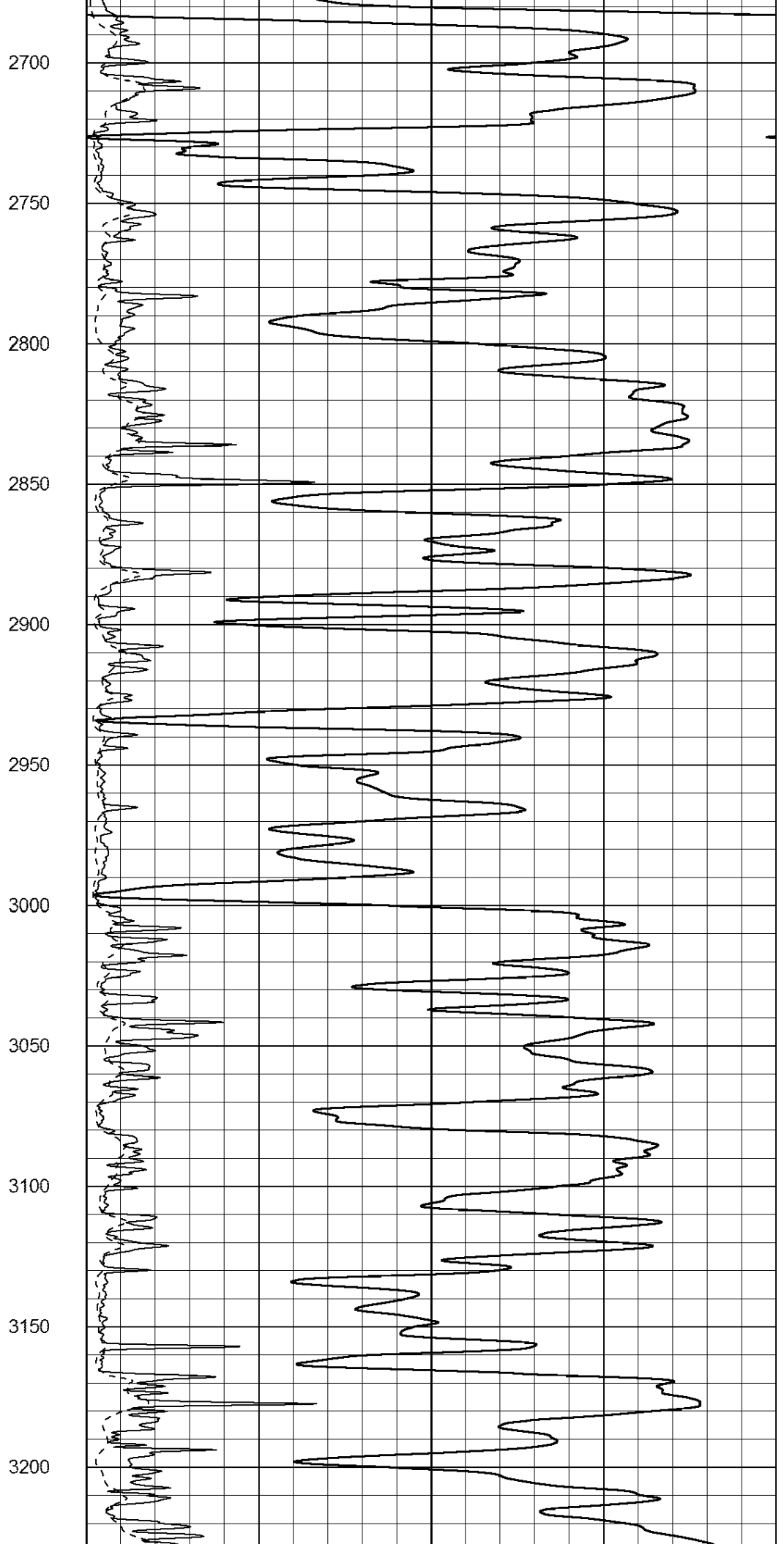
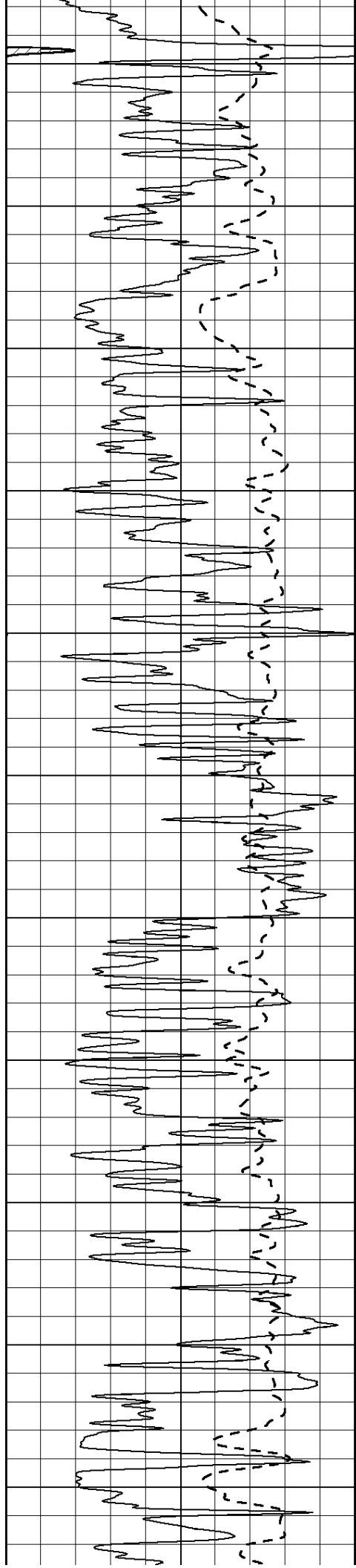


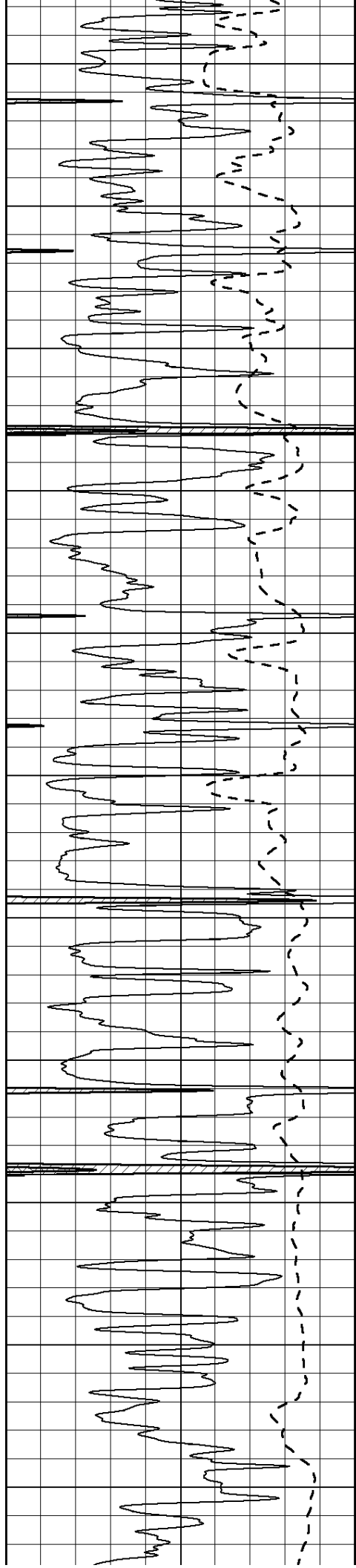
1050
1100
1150
1200
1250
1300
1350
1400
1450
1500
1550



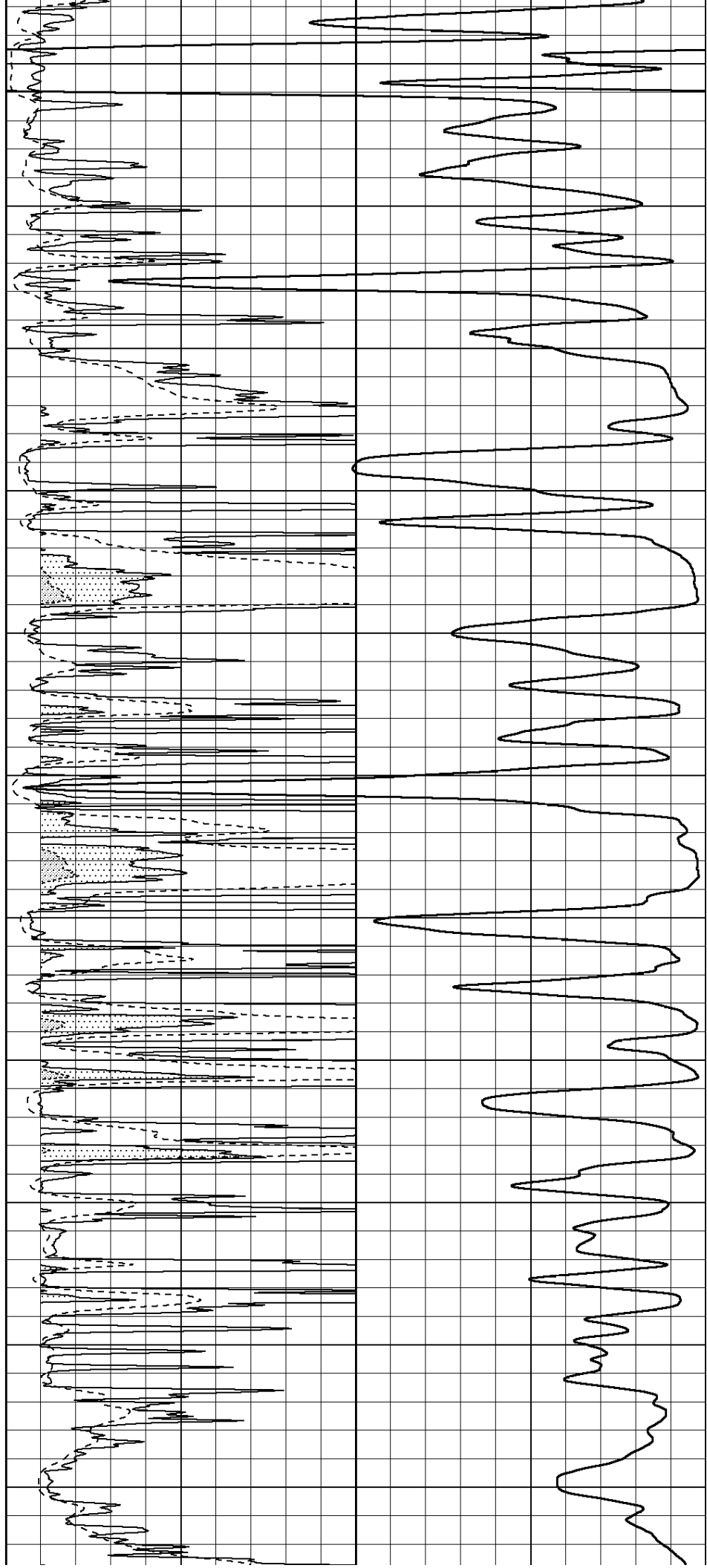


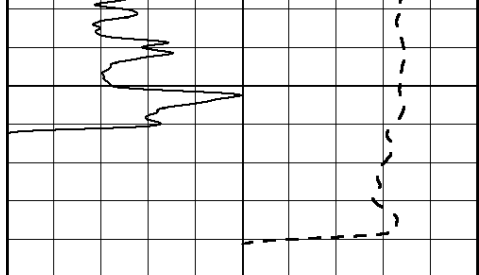






3250
3300
3350
3400
3450
3500
3550
3600
3650
3700
3750

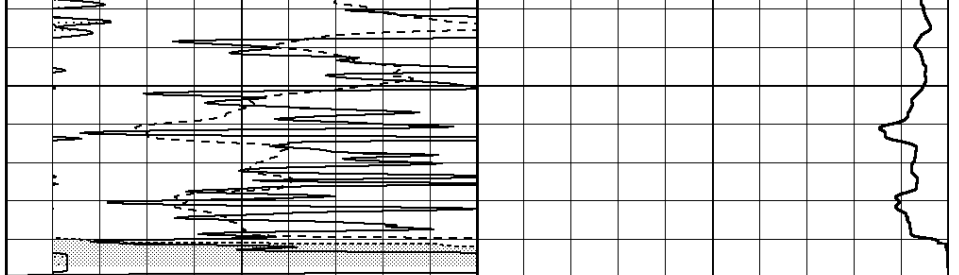




3800

3850

0 Gamma Ray (GAPI) 150
 -100 SP (mV) 100



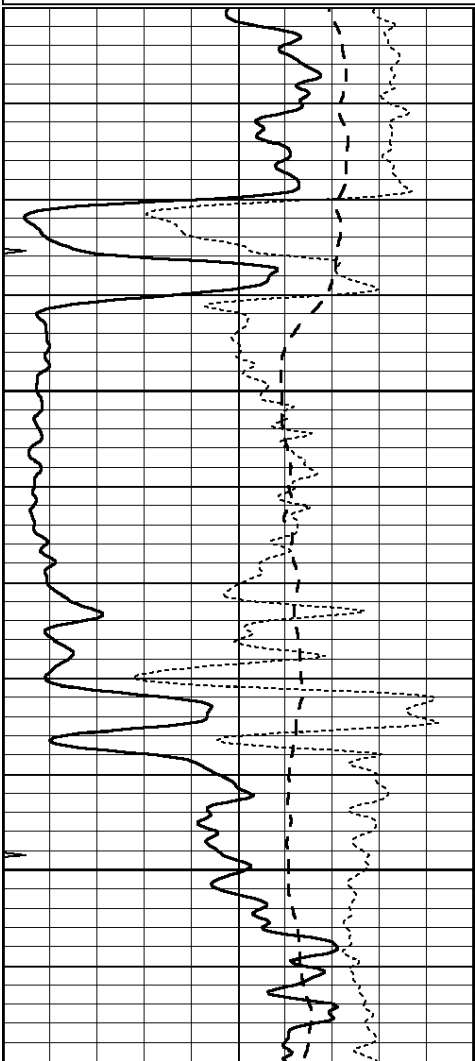
0 RLL3 (Ohm-m) 50
 0 RILD (Ohm-m) 50
 1000 CILD (mmho/m) 0

50 RILD X10 (Ohm-m) 500
 50 RLL3 X10 (Ohm-m) 500

Database File: 408617ddn.db
 Dataset Pathname: pass3.2
 Presentation Format: _dil
 Dataset Creation: Mon Apr 02 00:26:09 2012 by Calc Open-Cased 110302
 Charted by: Depth in Feet scaled 1:240

0 GAMMA RAY (GAPI) 150
 -100 SP (mV) 100
 -250 Rxo/Rt 50
 0 MINMK 20

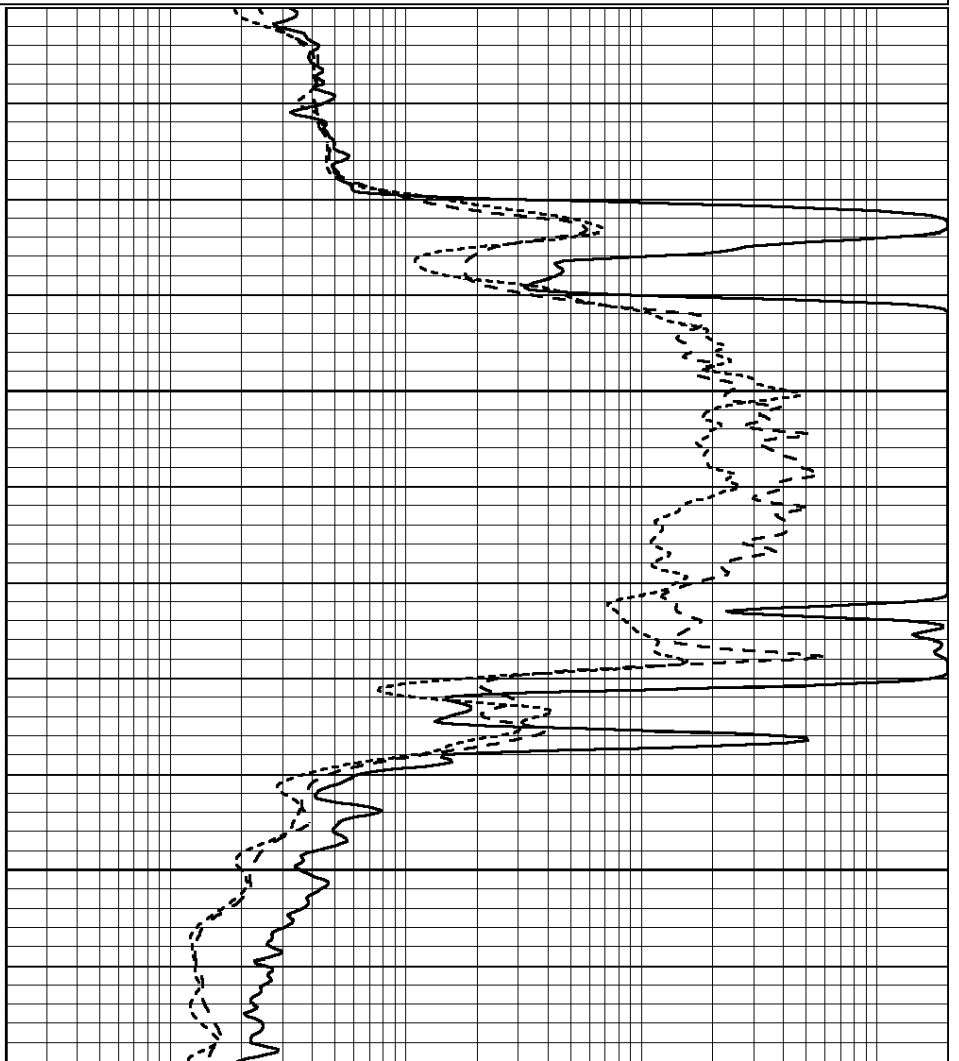
0.2 SHALLOW GUARD (Ohm-m) 2000
 0.2 DEEP INDUCTION (Ohm-m) 2000
 0.2 MEDIUM INDUCTION (Ohm-m) 2000



1600

1650

0 GAMMA RAY (GAPI) 150



0.2 SHALLOW GUARD (Ohm-m) 2000

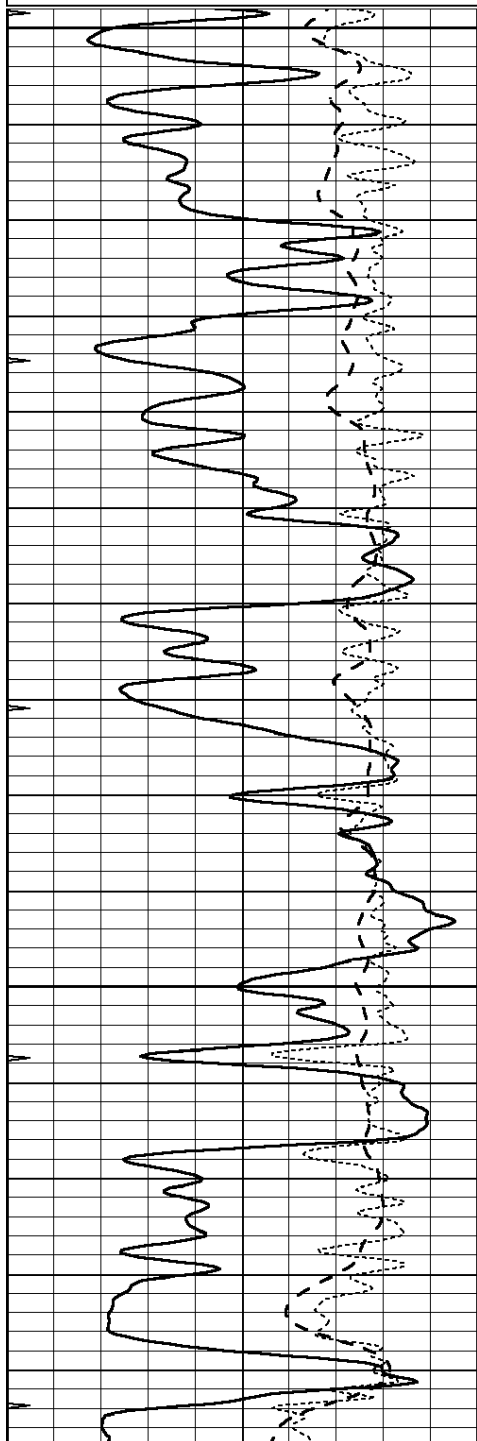
-100	SP (mV)	100
-250	Rxo/Rt	50
0	MINMK	20

0.2	DEEP INDUCTION (Ohm-m)	2000
0.2	MEDIUM INDUCTION (Ohm-m)	2000

Database File: 408617ddn.db
 Dataset Pathname: pass3.1
 Presentation Format: _dil
 Dataset Creation: Sun Apr 01 22:53:13 2012 by Calc Open-Cased 110302
 Charted by: Depth in Feet scaled 1:240

0	GAMMA RAY (GAPI)	150
-100	SP (mV)	100
-250	Rxo/Rt	50
0	MINMK	20

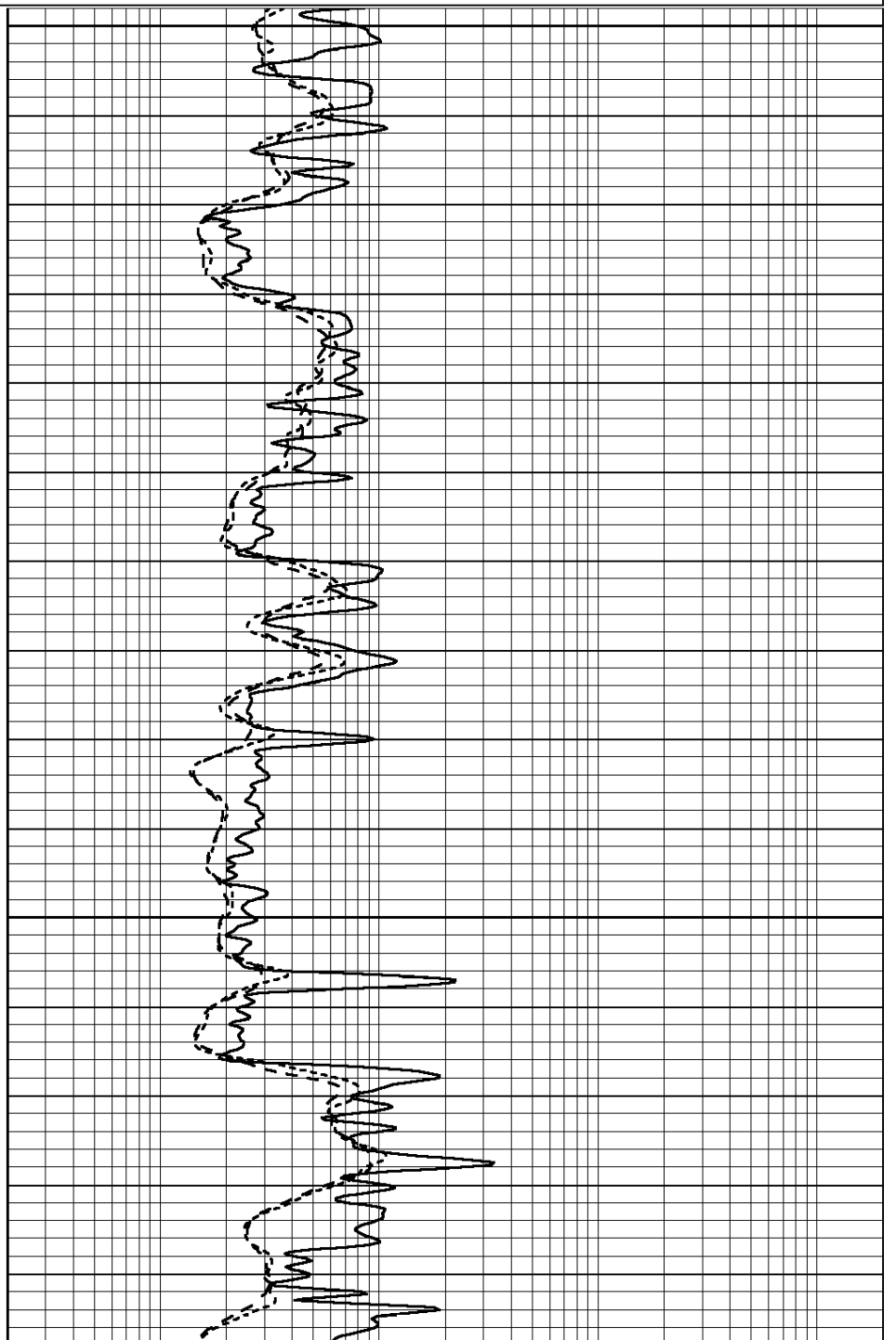
0.2	SHALLOW GUARD (Ohm-m)	2000
0.2	DEEP INDUCTION (Ohm-m)	2000
0.2	MEDIUM INDUCTION (Ohm-m)	2000

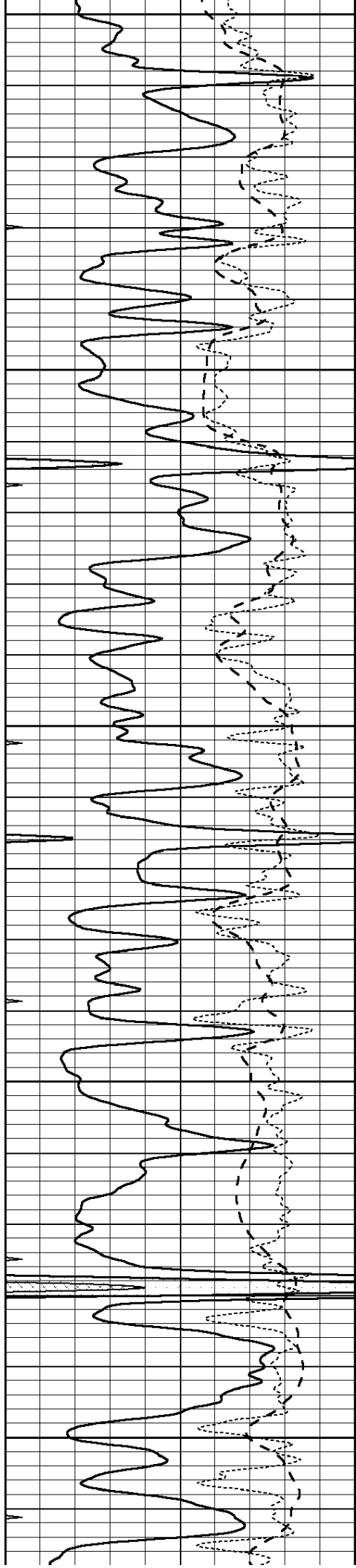


3050

3100

3150





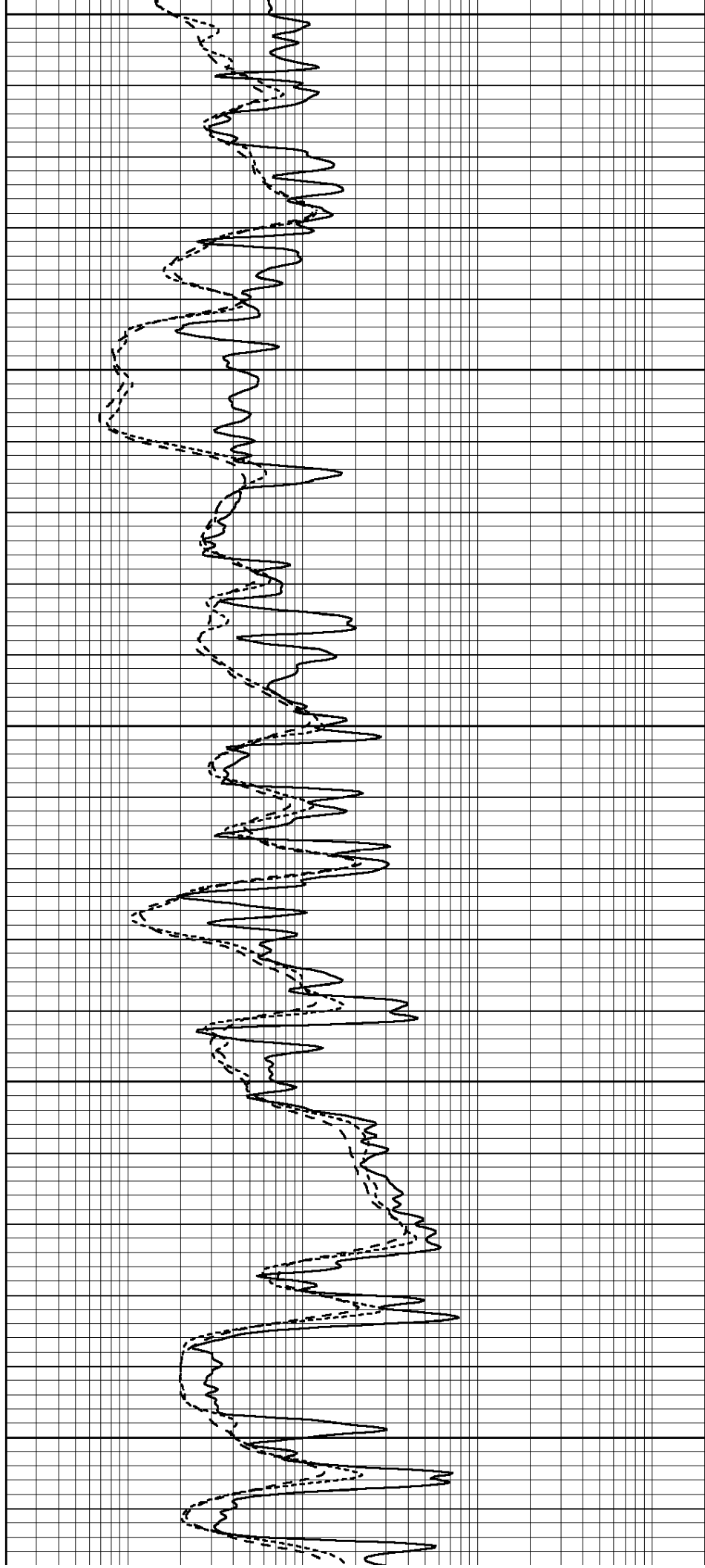
3200

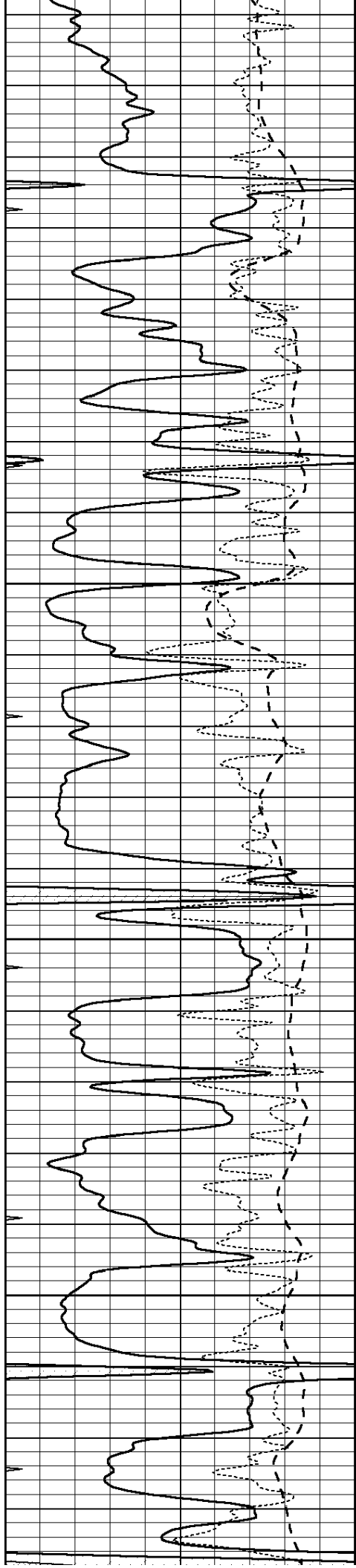
3250

3300

3350

3400



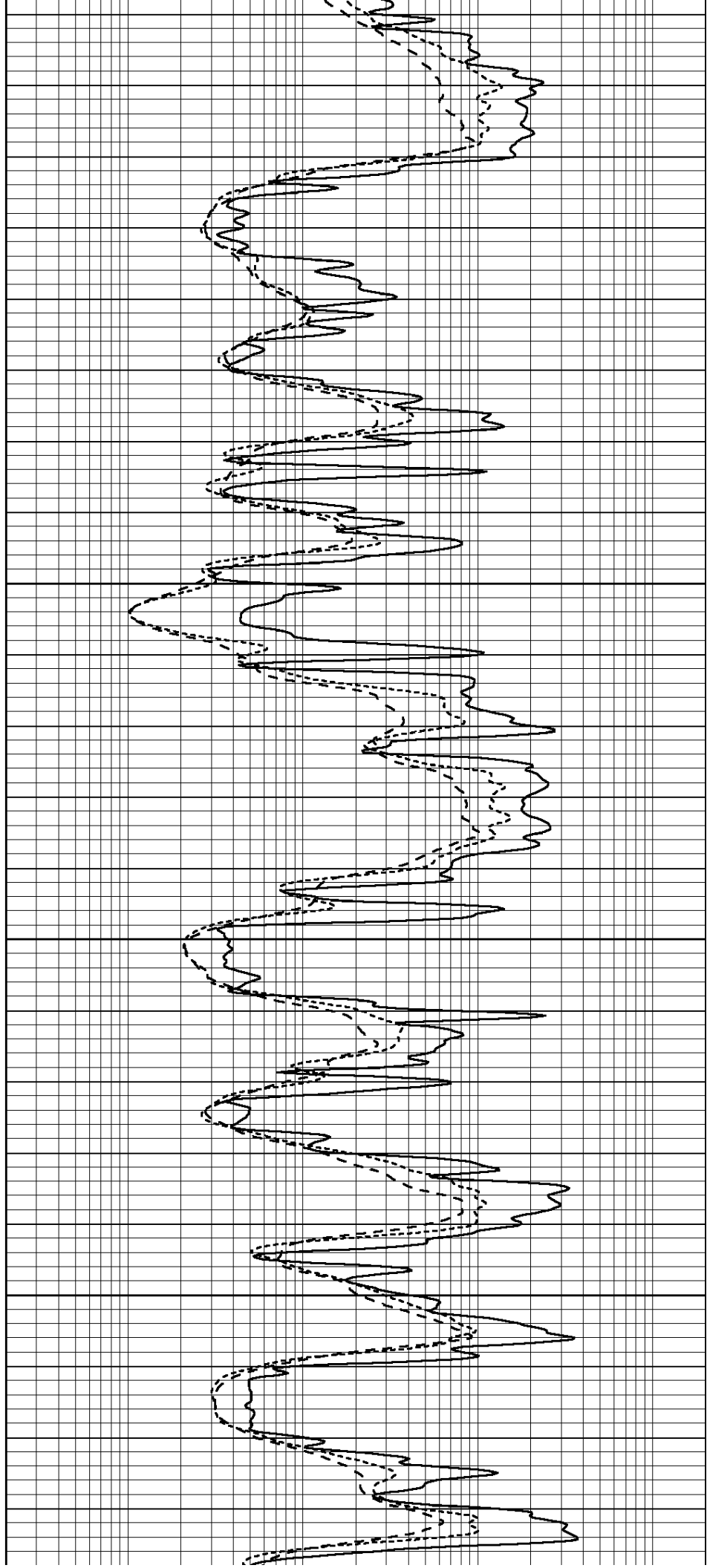


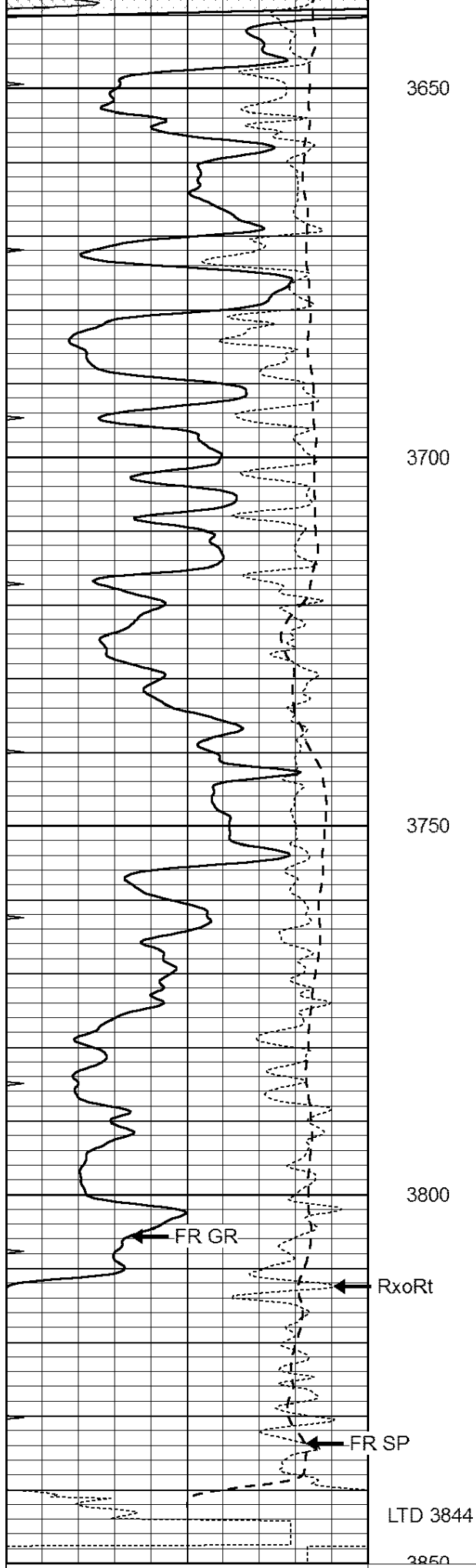
3450

3500

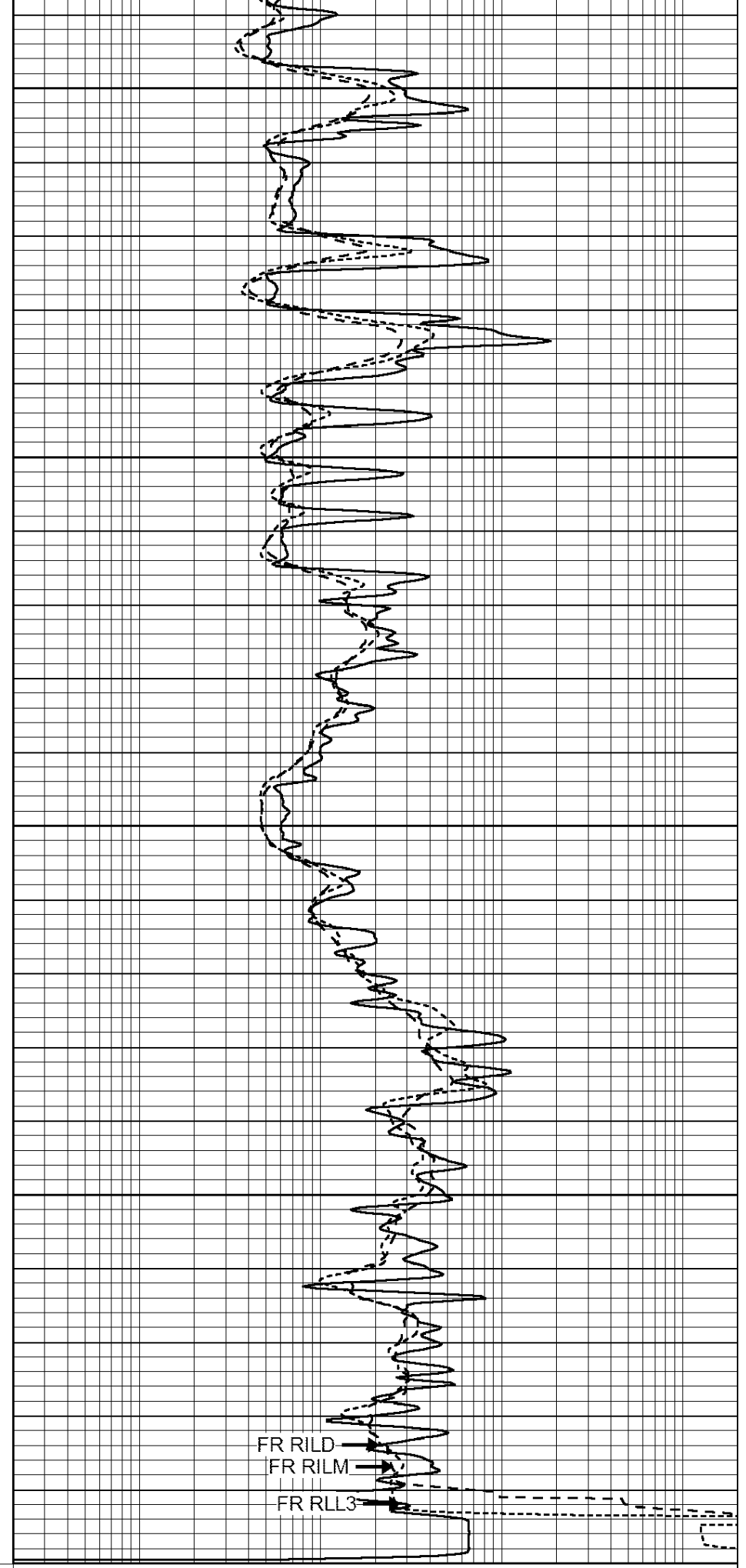
3550

3600





0	GAMMA RAY (GAPI)	150
-100	SP (mV)	100



0.2	SHALLOW GUARD (Ohm-m)	2000
0.2	DFFP INDUCTION (Ohm-m)	2000

-250	Rxo/Rt	50
0	MINMK	20

0.2	MEDIUM INDUCTION (Ohm-m)	2000
-----	--------------------------	------



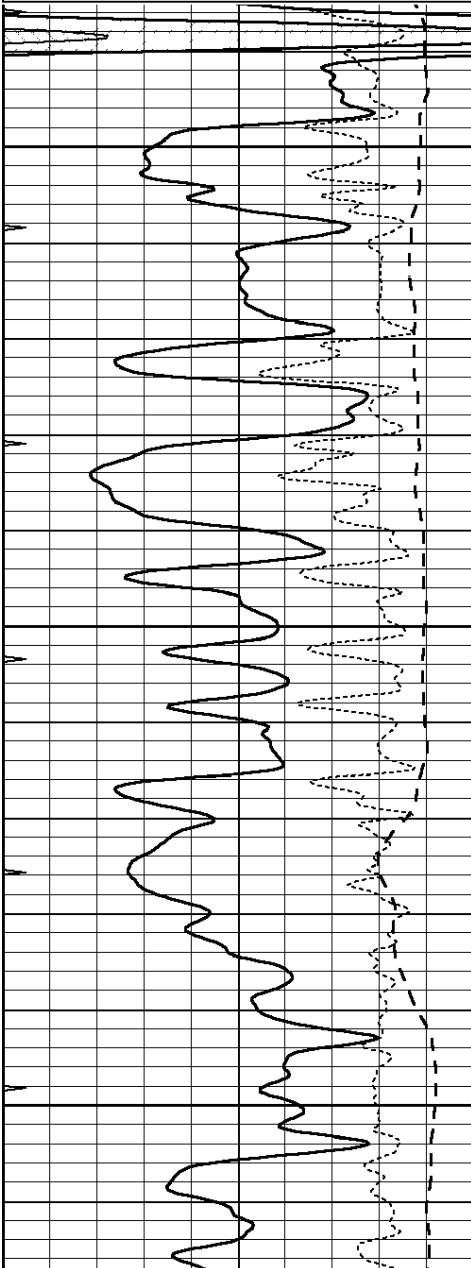
SUPERIOR
Hays,
Kansas

REPEAT SECTION

Database File: 408617ddn.db
 Dataset Pathname: pass2.1
 Presentation Format: _dil
 Dataset Creation: Sun Apr 01 22:24:26 2012 by Calc Open-Cased 110302
 Charted by: Depth in Feet scaled 1:240

0	GAMMA RAY (GAPI)	150
-100	SP (mV)	100
-250	Rxo/Rt	50
0	MINMK	20

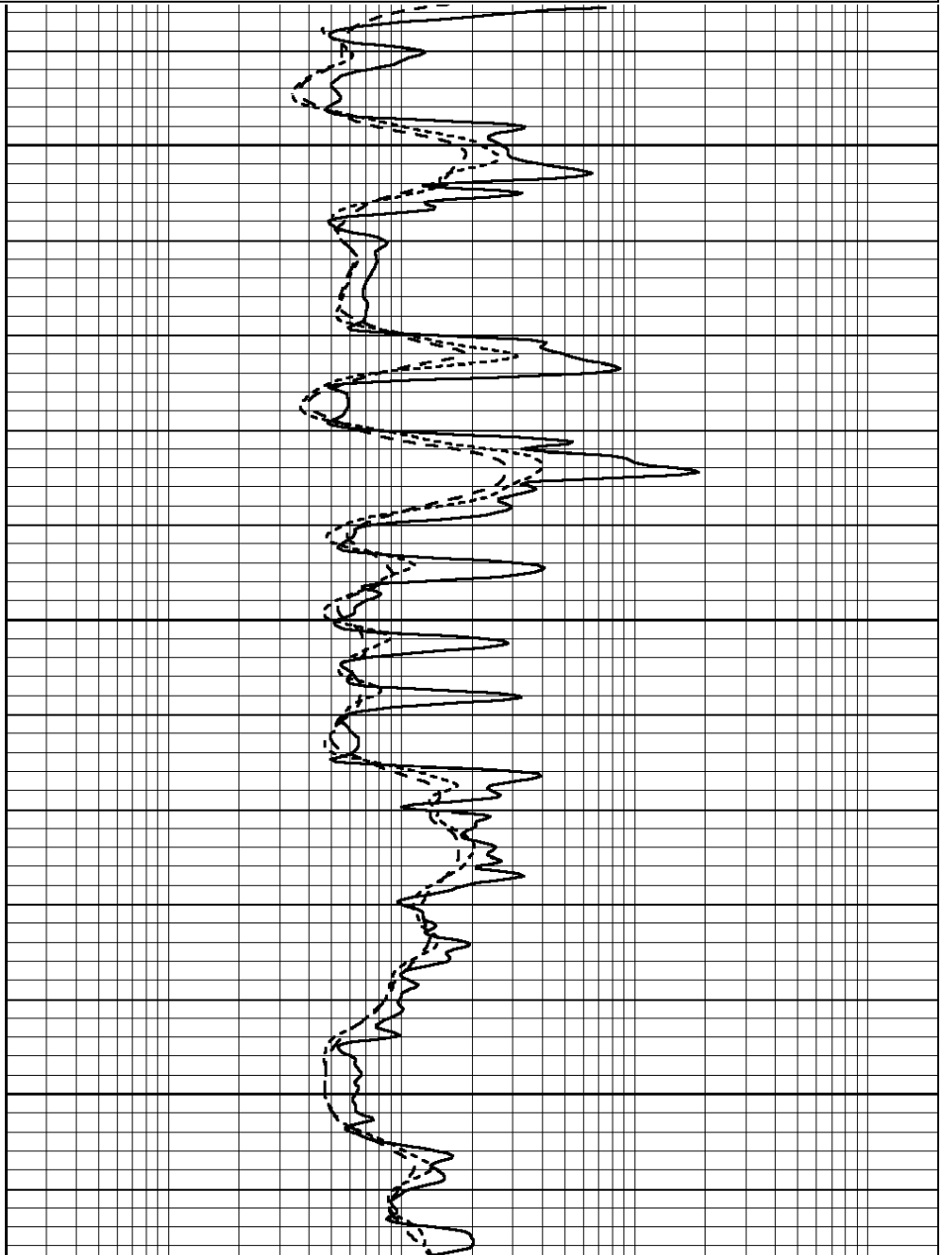
0.2	SHALLOW GUARD (Ohm-m)	2000
0.2	DEEP INDUCTION (Ohm-m)	2000
0.2	MEDIUM INDUCTION (Ohm-m)	2000

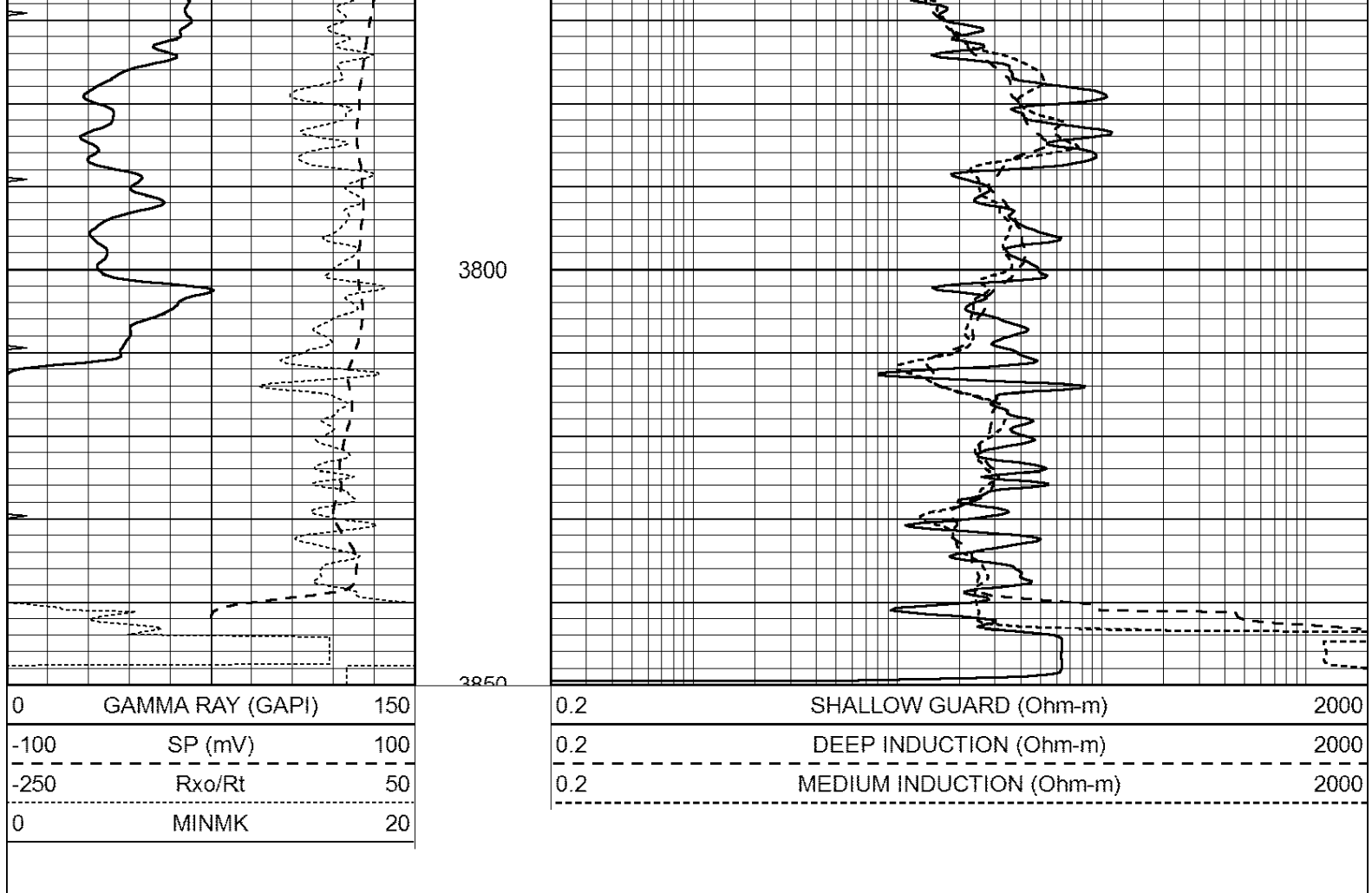


3650

3700

3750





Calibration Report

Database File: 408617ddn.db
 Dataset Pathname: pass3.2
 Dataset Creation: Mon Apr 02 00:26:09 2012 by Calc Open-Cased 110302

Dual Induction Calibration Report

Serial-Model: DIL3-GEAR
 Performed: Mon Mar 26 13:06:26 2012

Loop:	Readings				References			Results	
	Air	Loop			Air	Loop		m	b
Deep	0.011	0.656	V	0.000	400.000	mmho/m	640.000	8.000	
Medium	0.013	0.740	V	0.000	462.500	mmho/m	700.000	-4.000	
Internal:	Zero	Cal		Zero	Cal		m	b	
Deep	0.002	0.645	V	0.000	400.000	mmho/m	622.059	-1.071	
Medium	0.007	0.740	V	0.000	462.500	mmho/m	631.393	-4.555	

Litho Density Calibration Report

Serial: 006 Model: PRB
 Performed Sun Aug 15 09:48:41 2010

Litho Density Calibration

	Background	Magnesium	Aluminum	Sandstone	
Window 1	1686.6	11612.8	3932.0	12718.8	cps
Window 2	1531.4	9204.7	3267.8	9851.9	cps
Window 3	1198.3	4733.6	1952.5	4920.6	cps

Window 4	317.3	321.2	325.9	303.6	cps
Long Space	0.0	7673.3	1736.4	8320.4	cps
Short Space	1.7	2548.5	1657.2	2628.8	cps
Rho		1.7100	2.5900	1.3800	g/cc
Pe			2.5700	1.5500	

Rib Angle	: 43.8	Rib Slope	: 0.961	Density/Spine Ratio	: 0.569
Spine Angle	: 73.8	Spine Slope	: 3.453	Spine Intercept	: -18.1

Caliper				
	Readings	Reference		
Low Ref	4.0	8.3		
High Ref	5.9	15.0		
	Gain: 3.5		Offset: -5.3	

Compensated Neutron Calibration Report

Serial Number:	070808
Tool Model:	Probe

PRE-SURVEY VERIFICATION

Detector	Readings	Measured	Target
Short Space	cps		
Long Space	cps	pu	pu

POST-SURVEY VERIFICATION

Detector	Readings	Measured	Target
Short Space	cps		
Long Space	cps	pu	pu

Gamma Ray Calibration Report

Serial Number:	070559	
Tool Model:	OPEN_GR	
Performed:	Sat Mar 24 18:51:25 2012	
Calibrator Value:	1.0	GAPI
Background Reading:	0.0	cps
Calibrator Reading:	1.0	cps
Sensitivity:	0.3000	GAPI/cps