



**SUPERIOR**  
Hays,  
Kansas

**SONIC**  
LOG

Company PELICAN HILL OIL & GAS INC.  
Well NELSON #2-7  
Field  
County TREGO  
State KANSAS

Company PELICAN HILL OIL & GAS INC.  
Well NELSON #2-7  
Field  
County TREGO State KANSAS

Location: API # : 15-195-22757-0000  
1442' FSL & 1500' FEL  
SEC 7 TWP 11S RGE 21W  
Permanent Datum GROUND LEVEL Elevation 2114  
Log Measured From KELLY BUSHING 9' A.G.L.  
Drilling Measured From KELLY BUSHING  
Other Services  
CDL/CNL/DIL  
MEL/FRAC  
Elevation  
K.B. 2123  
D.F. 2121  
G.L. 2114

Date	4/2/12
Run Number	TWO
Depth Driller	3841
Depth Logger	3844
Bottom Logged Interval	3830
Top Log Interval	250
Casing Driller	8 5/8"@270'
Casing Logger	269'
Bit Size	7 7/8"
Type Fluid in Hole	CHEMICAL MUD
Density / Viscosity	9.4/56
pH / Fluid Loss	11.0/7.2
Source of Sample	FLOWLINE
Rm @ Meas. Temp	0.80@71F
Rmt @ Meas. Temp	0.60@71F
Rmc @ Meas. Temp	0.96@71F
Source of Rmf / Rmc	MEASUREMENT
Rm @ BHT	0.49@115F
Time Circulation Stopped	2 HOURS
Time Logger on Bottom	
Maximum Recorded Temperature	115F
Equipment Number	4010
Location	HAYS, KANSAS
Recorded By	JEFF GRONEWEG
Witnessed By	MARC DOWNING

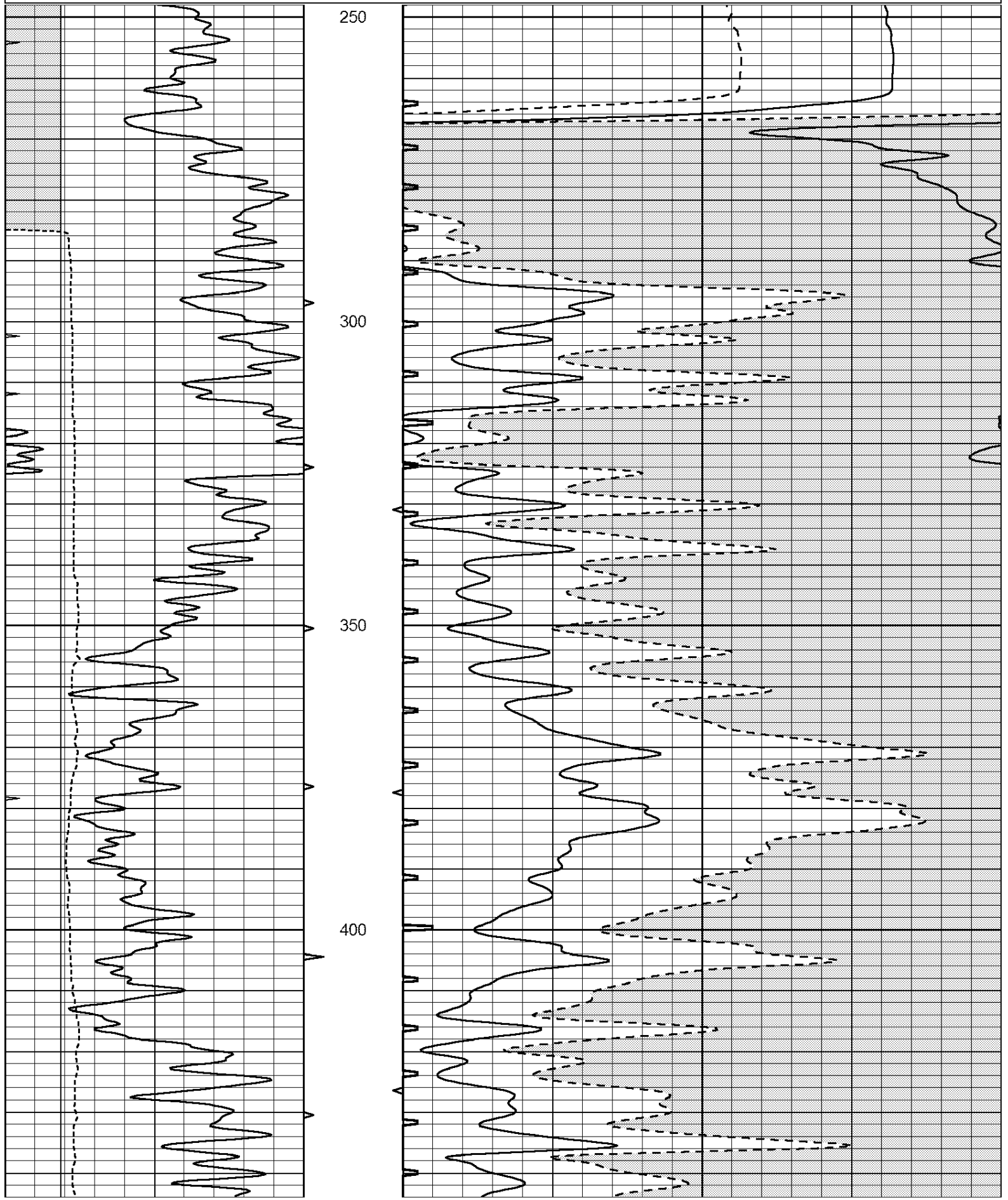
<<< Fold Here >>>

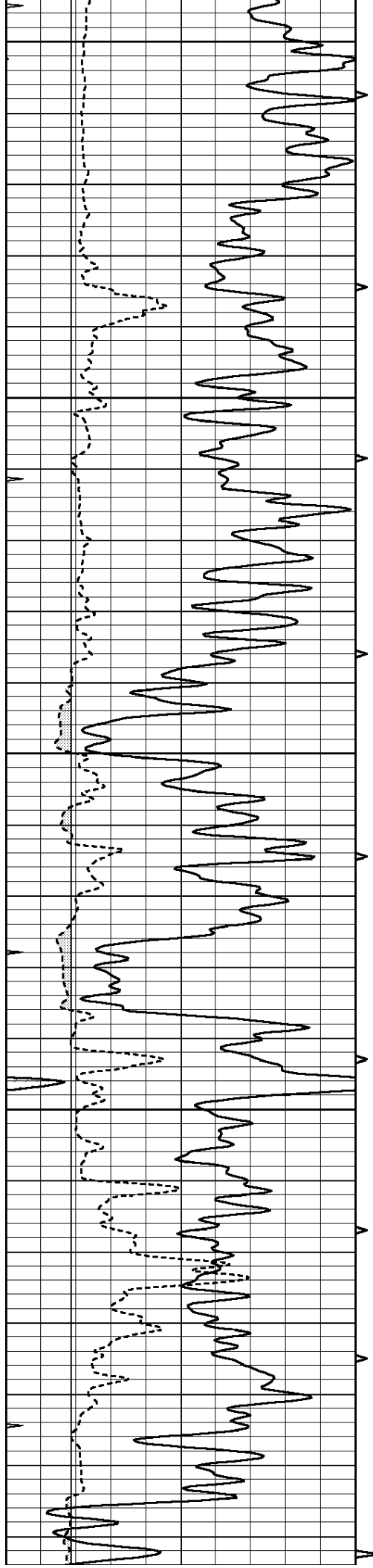
All interpretations are opinions based on inferences from electrical or other measurements and we cannot and do not guarantee the accuracy or correctness of any interpretation, and we shall not, except in the case of gross or willful negligence on our part, be liable or responsible for any loss, costs, damages, or expenses incurred or sustained by anyone resulting from any interpretation made by any of our officers, agents or employees. These interpretations are also subject to our general terms and conditions set out in our current Price Schedule.

Comments

THANK YOU FOR USING SUPERIOR WELL SERVICE HAYS, KANSAS (785) 628-6395  
DIRECTIONS  
RIGA, KS - 12 MILES NORTH TO RD A - 2 MILES WEST TO RD 360  
2 MILES SOUTH - EAST & NORTH INTO ON NORTH SIDE OF TANK BATTERY

0	GAMMA RAY (GAPI)	150	ABHV	140	DELTA TIME (usec/ft)	40
6	CALIPER (in)	16	10 (ft3) 0	30	SONIC POROSITY (pu)	-10
0	MINMK	20	TBHV	0	ITT (msec)	20
			0 (ft3) 10			





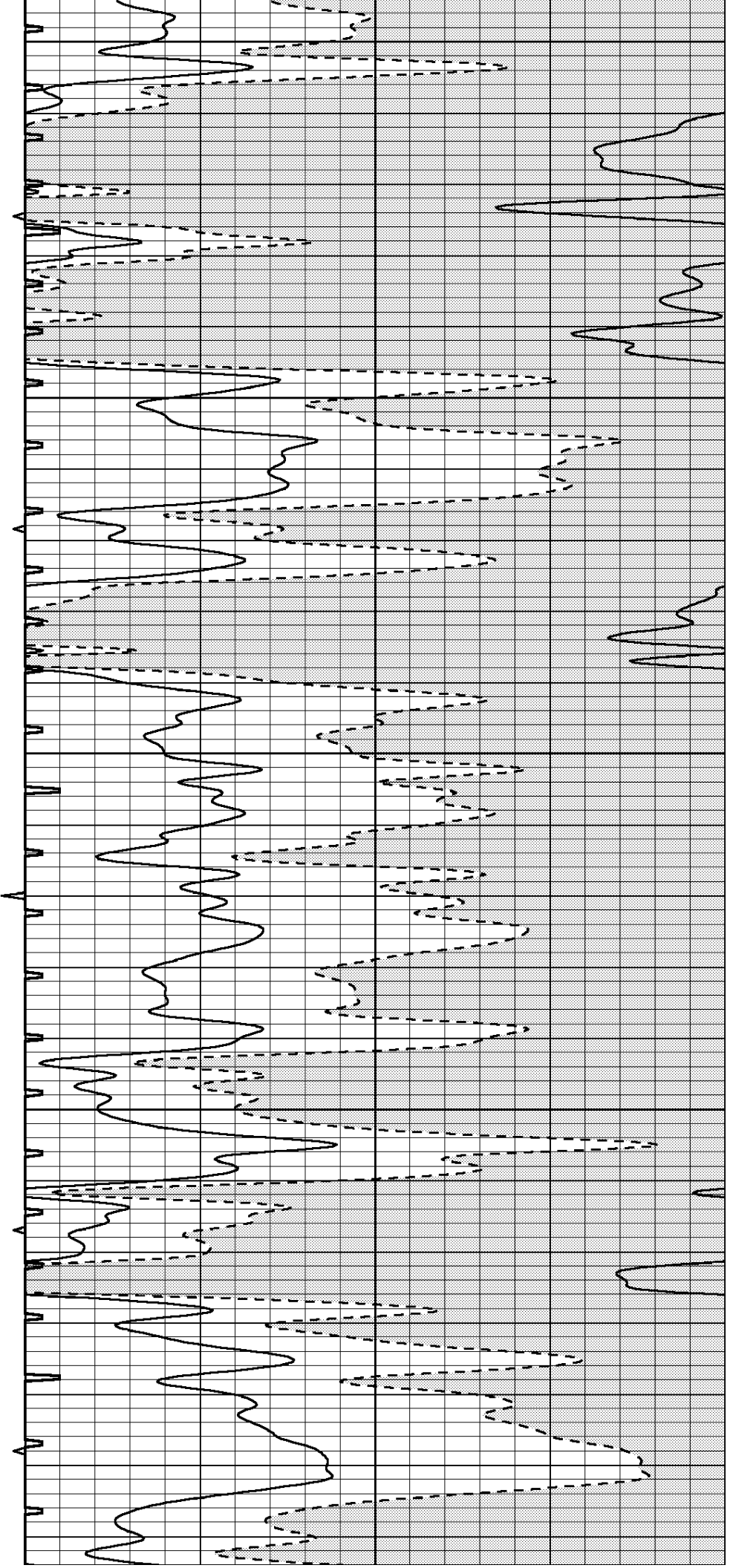
450

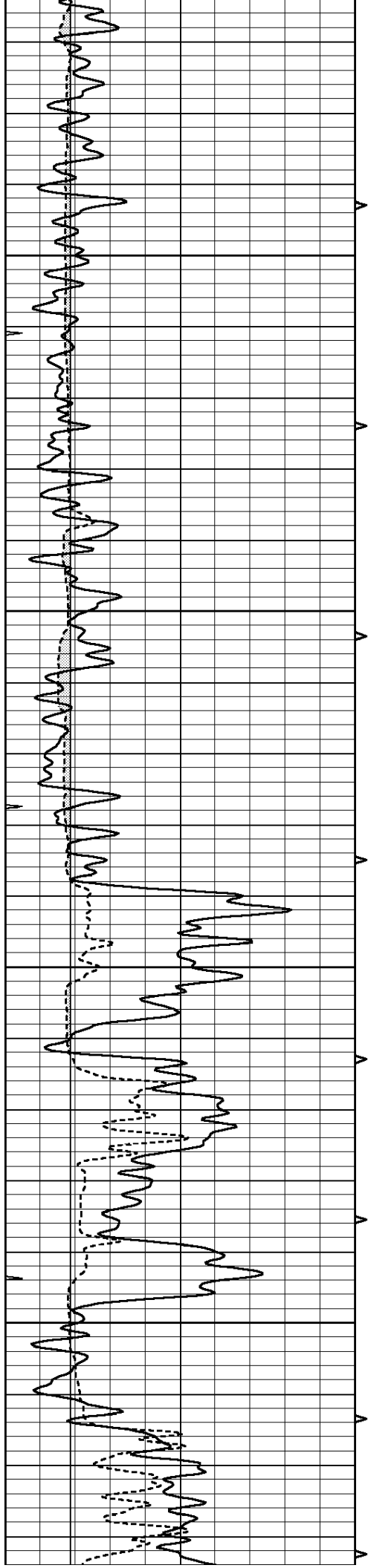
500

550

600

650



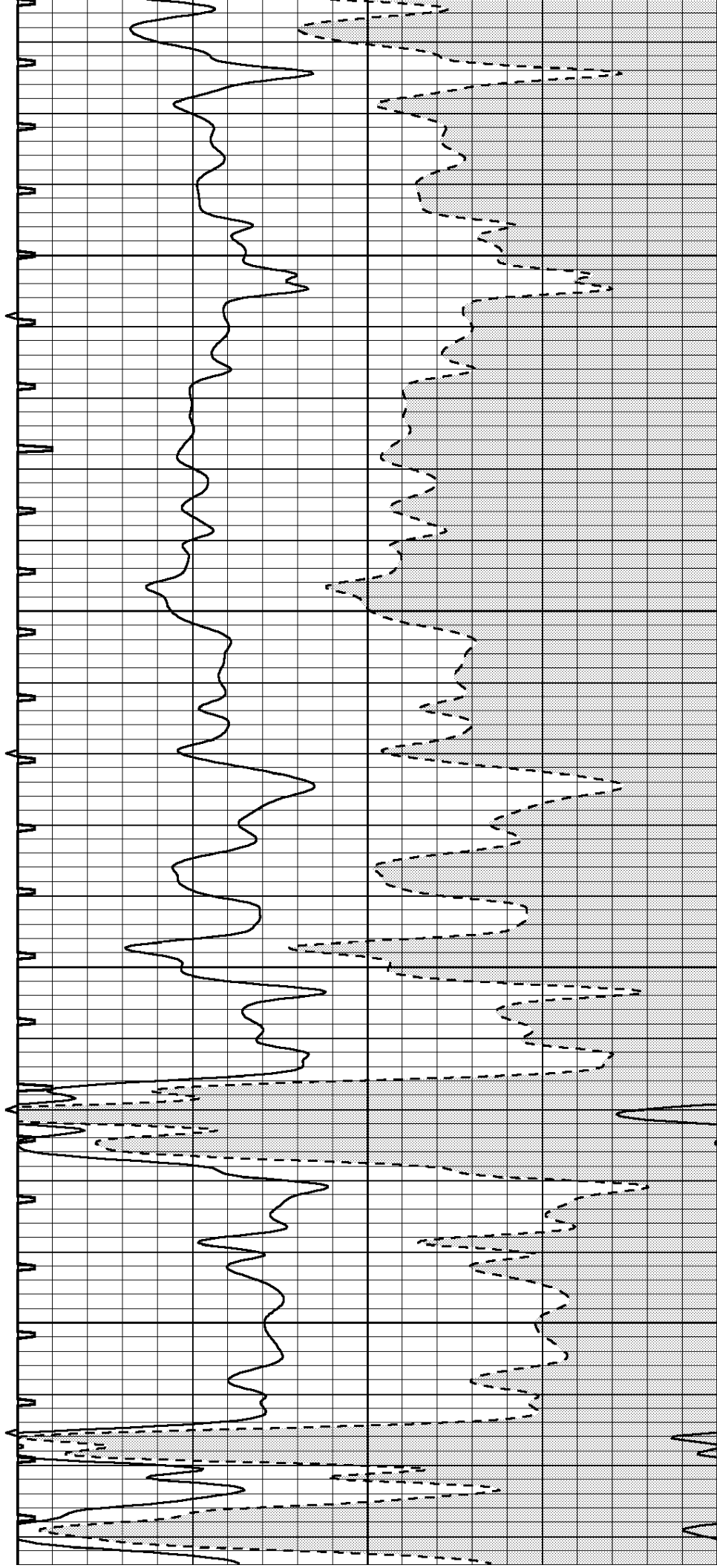


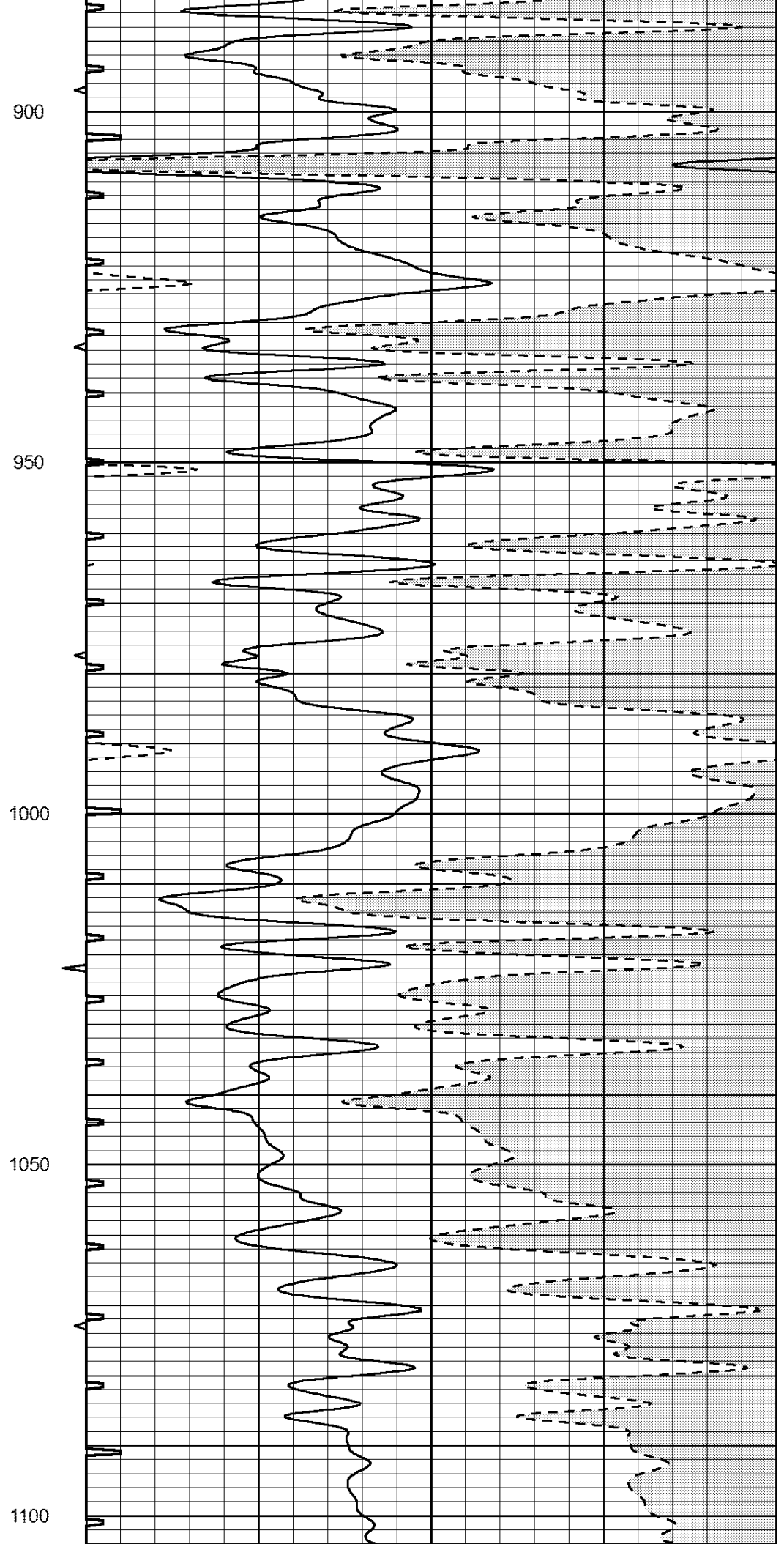
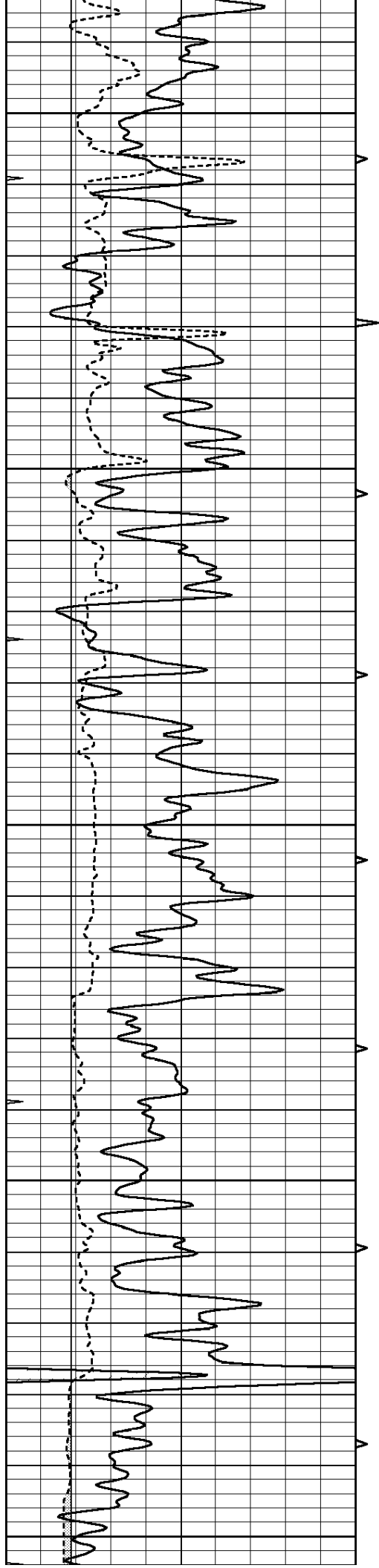
700

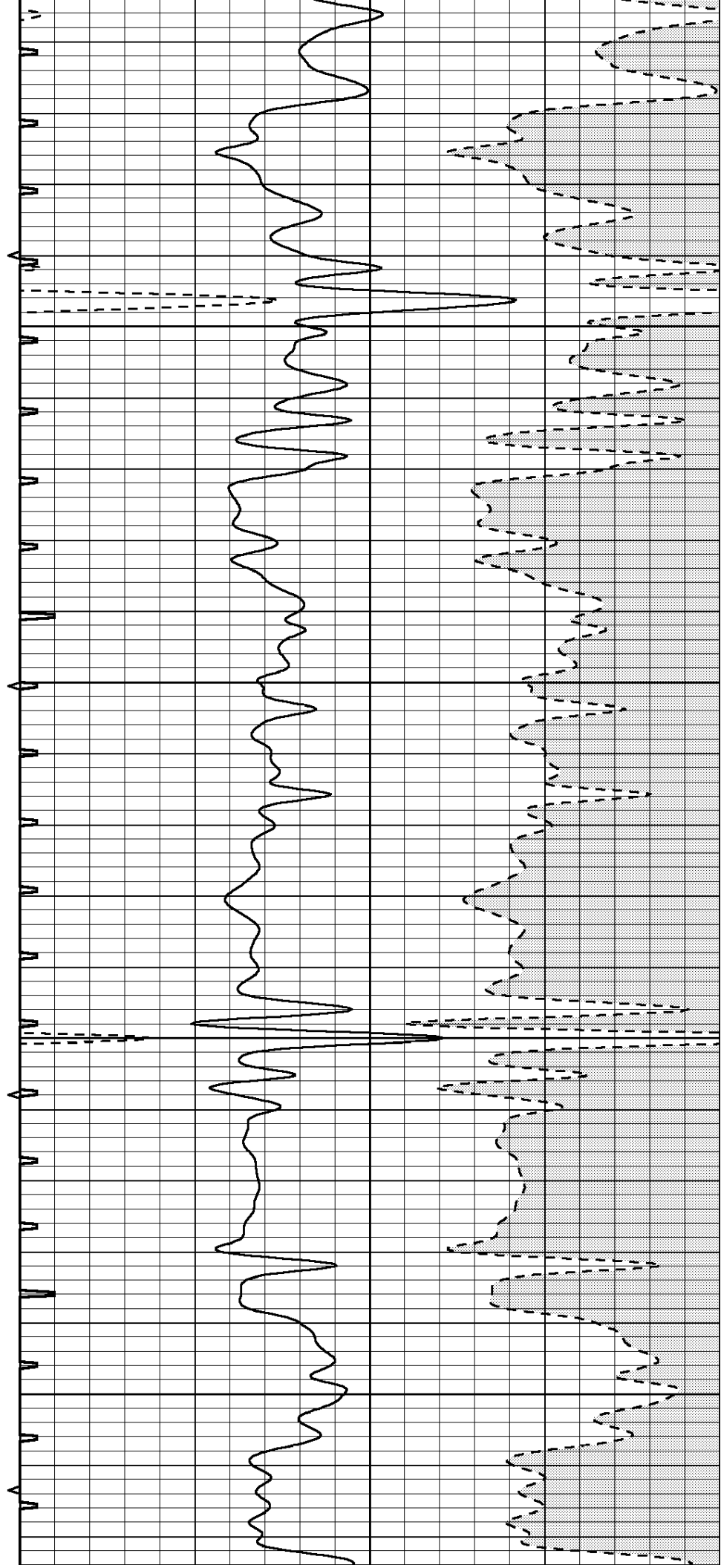
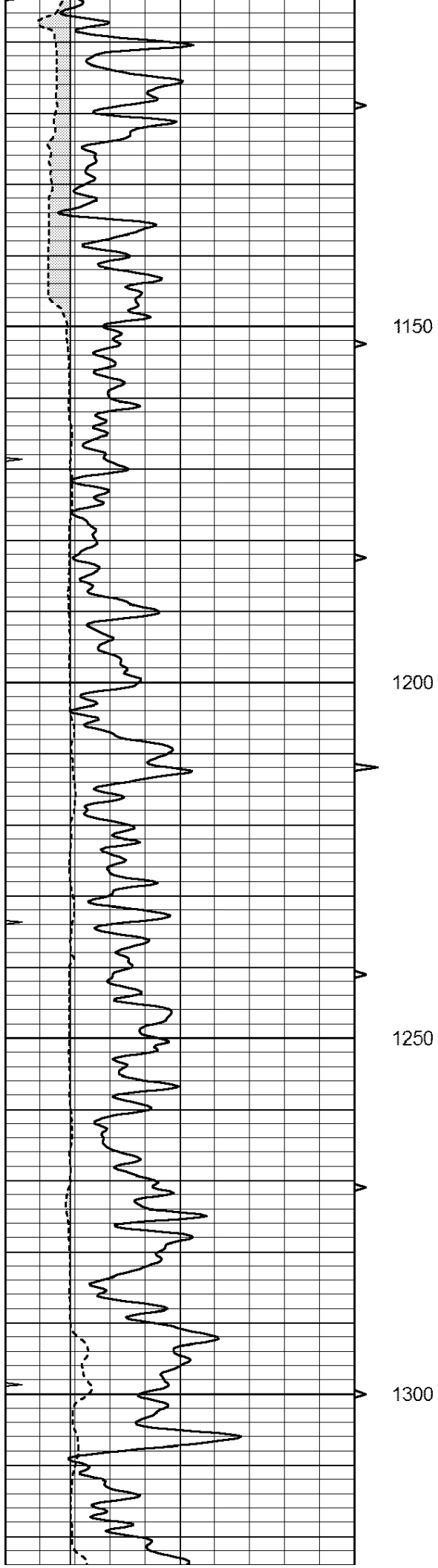
750

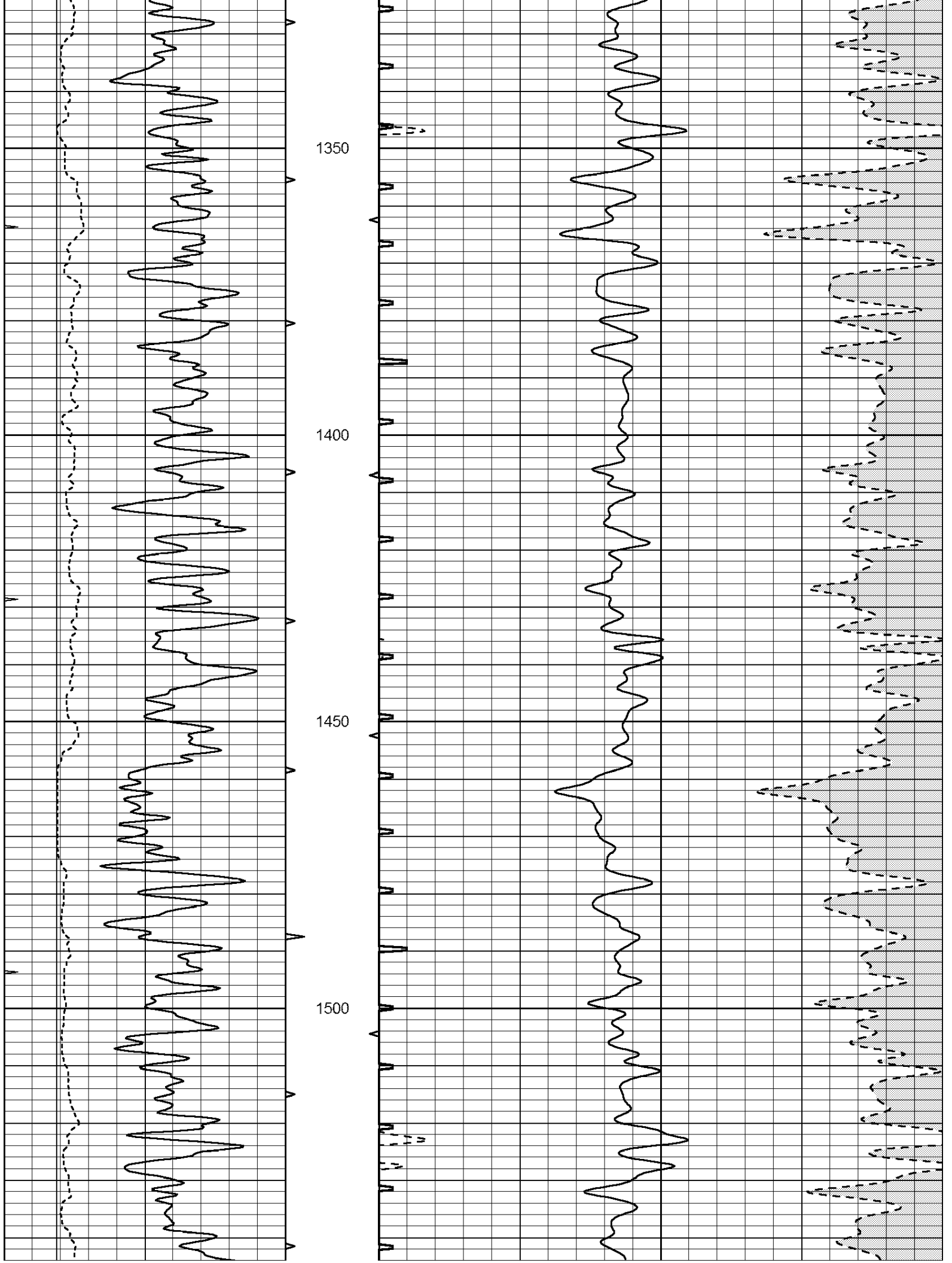
800

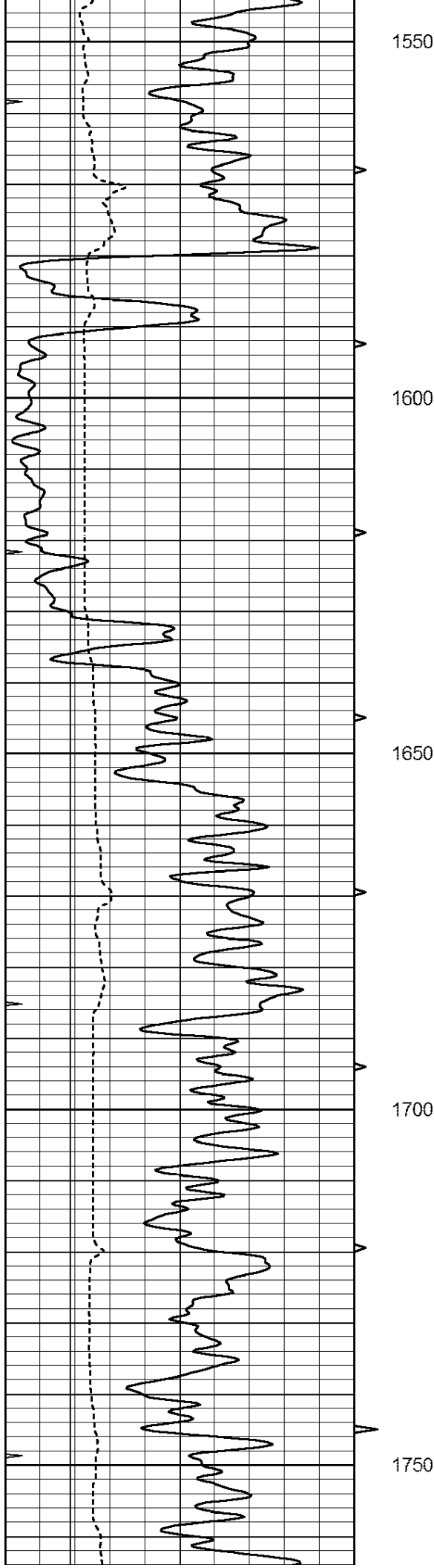
850











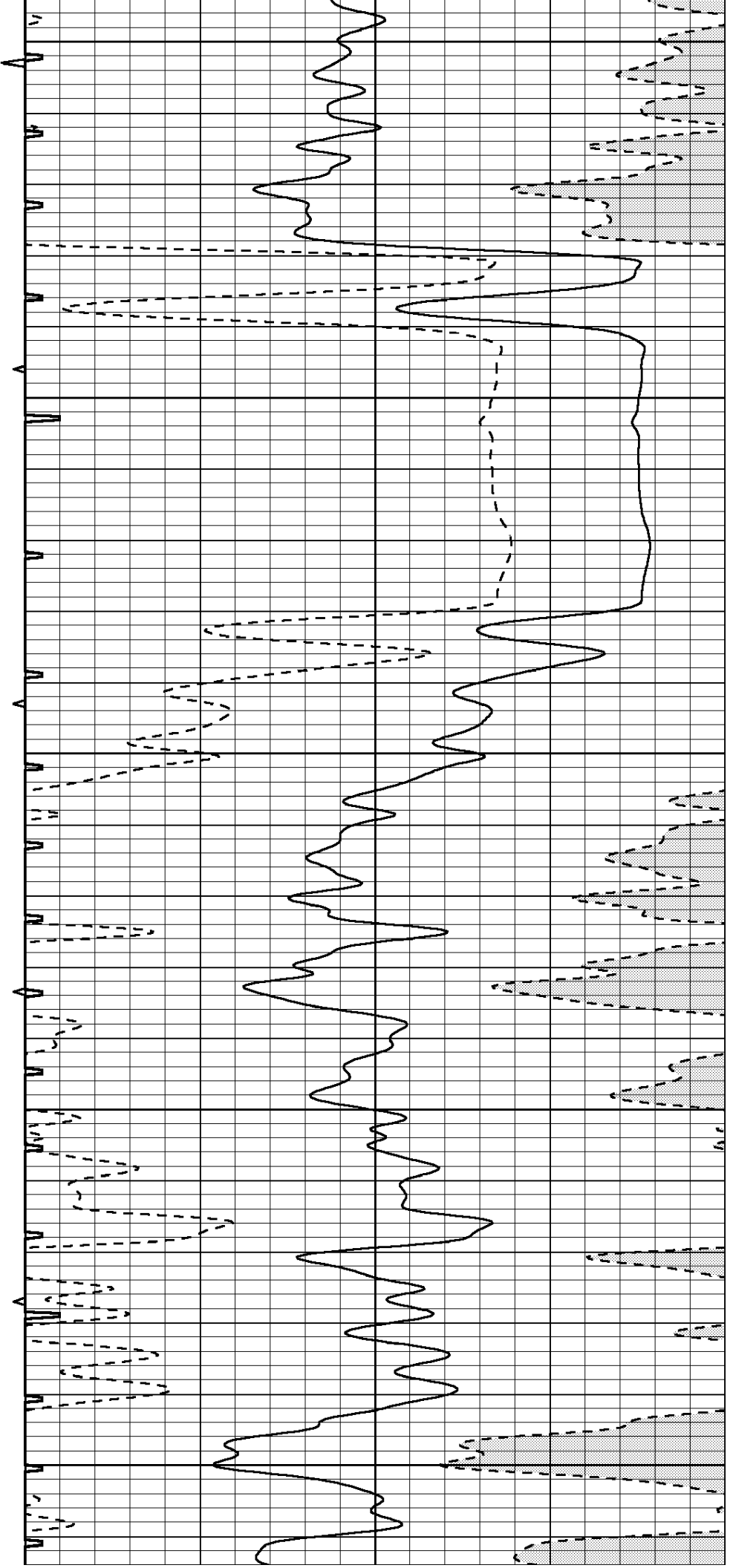
1550

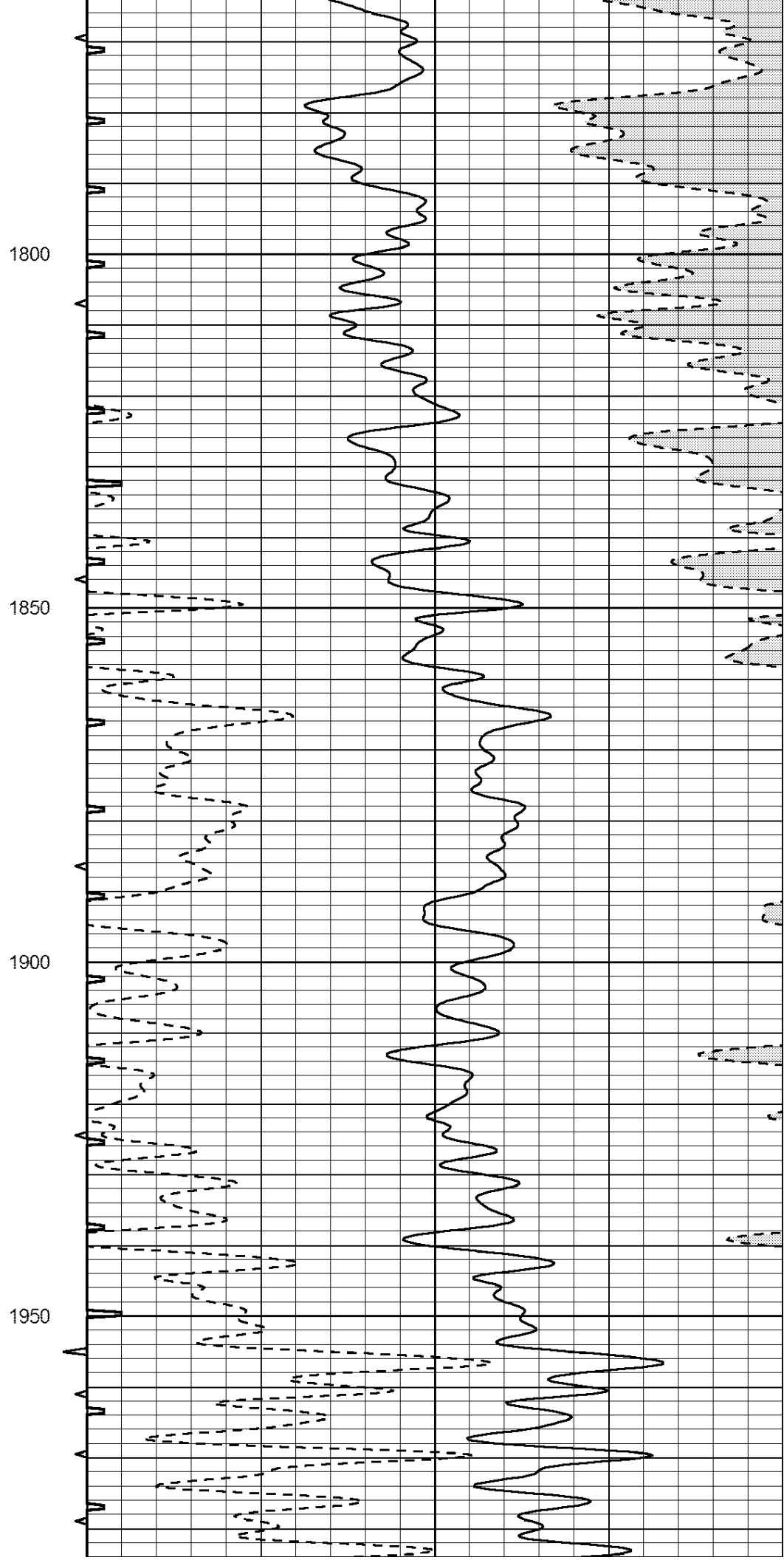
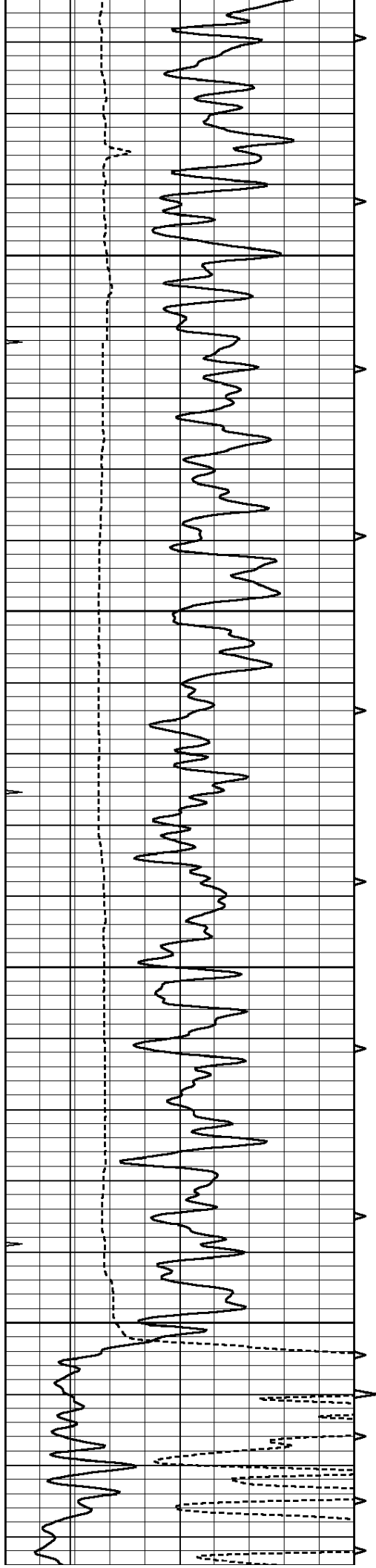
1600

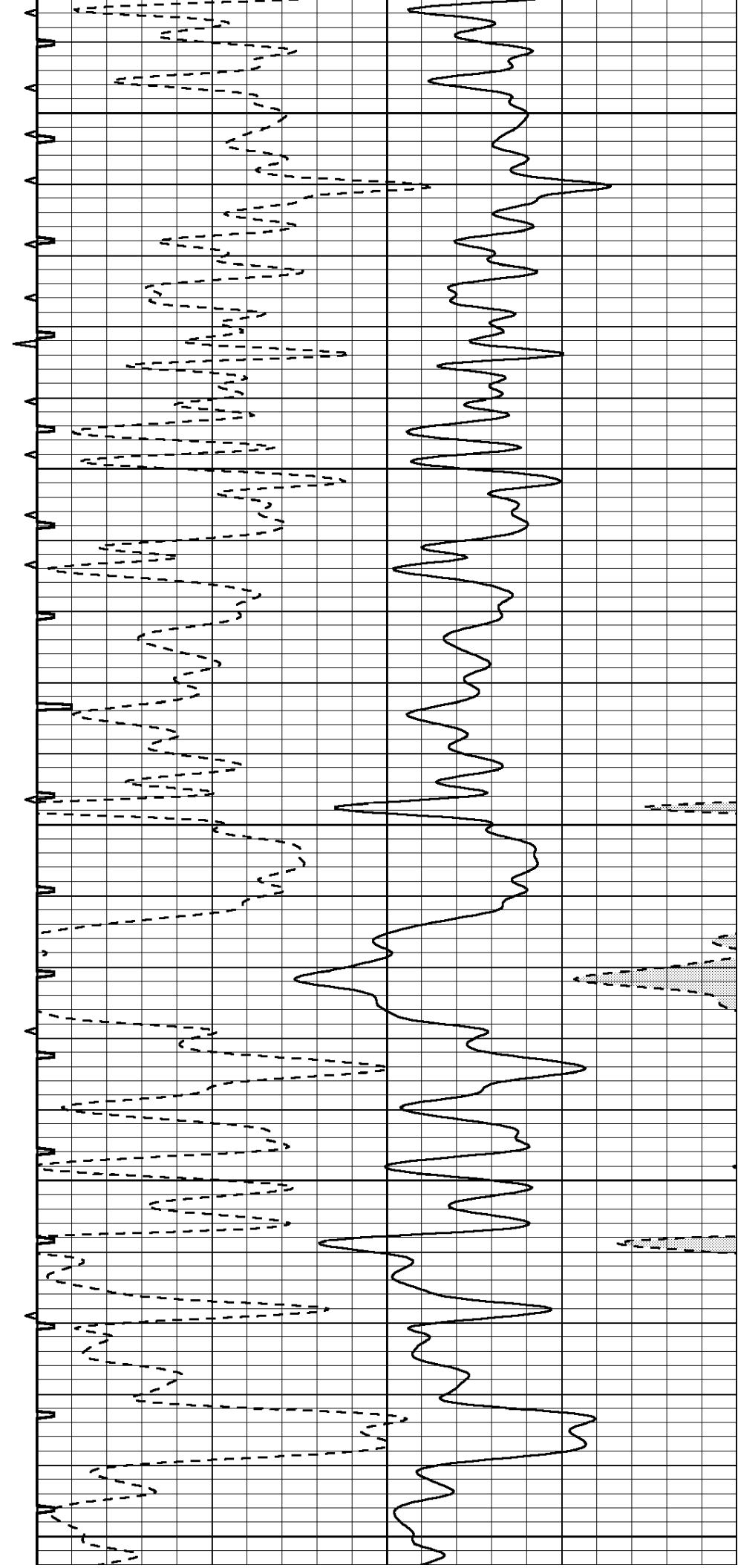
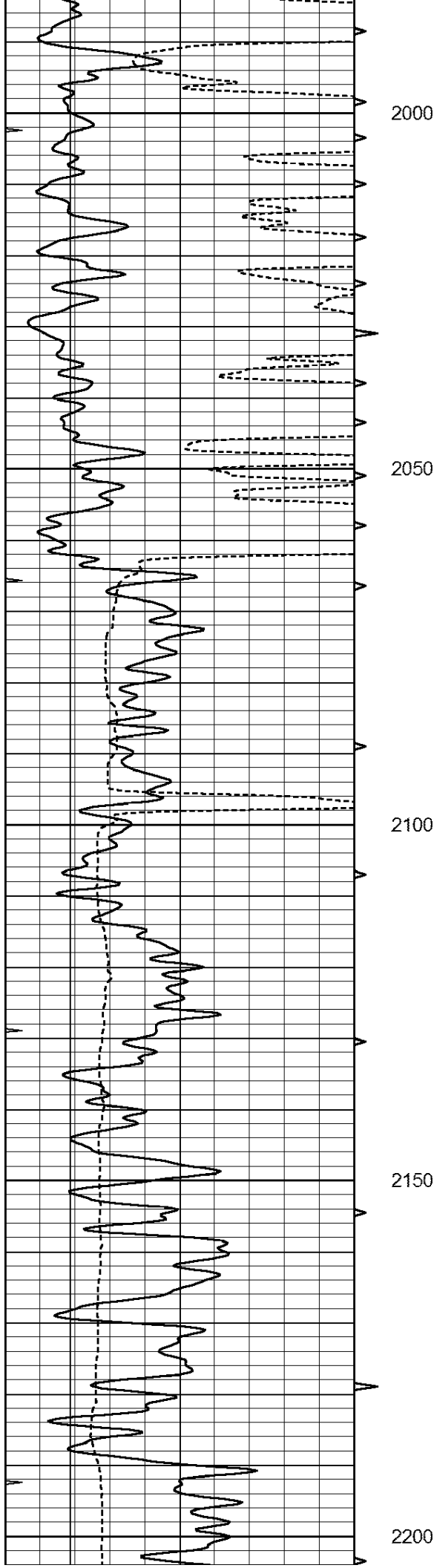
1650

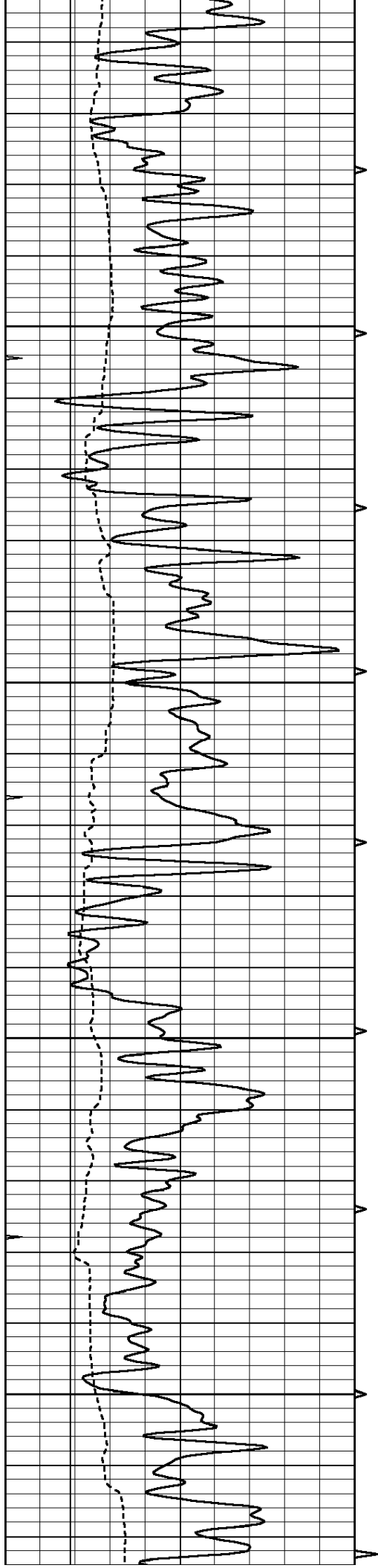
1700

1750







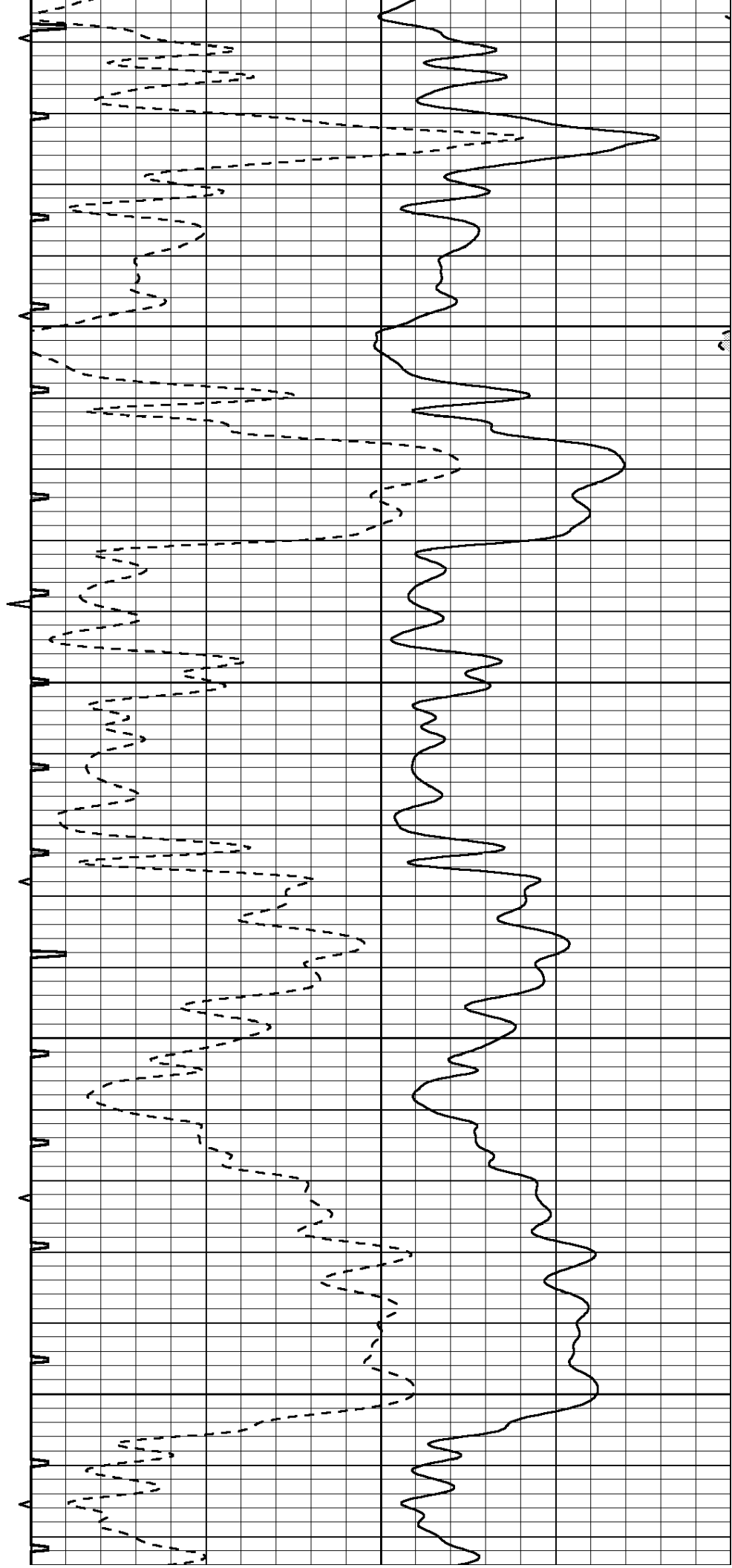
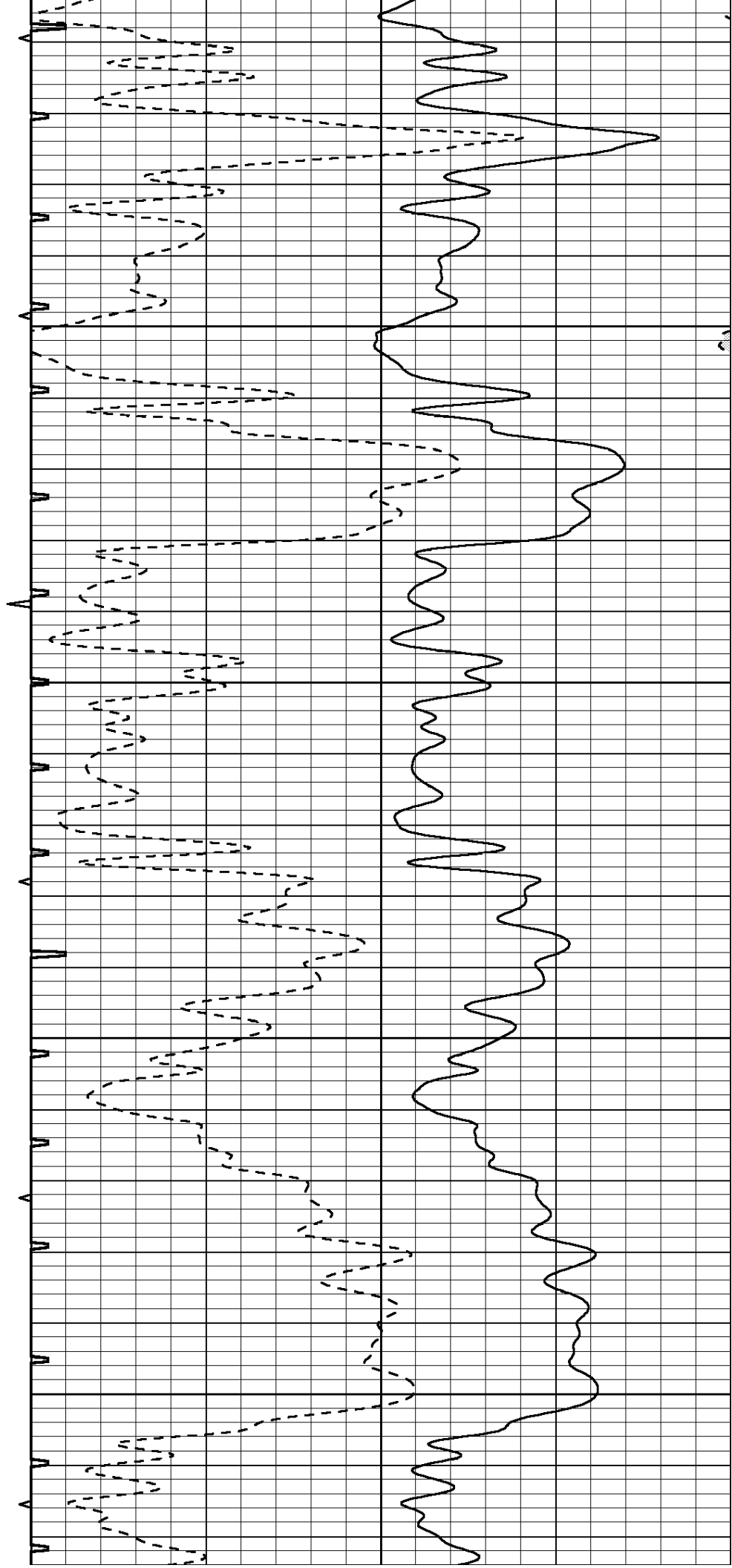


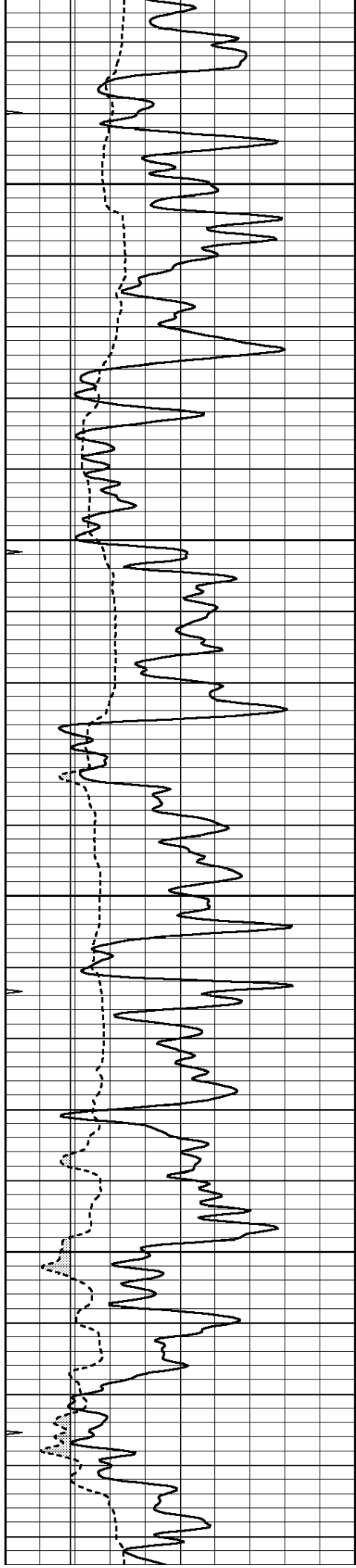
2250

2300

2350

2400



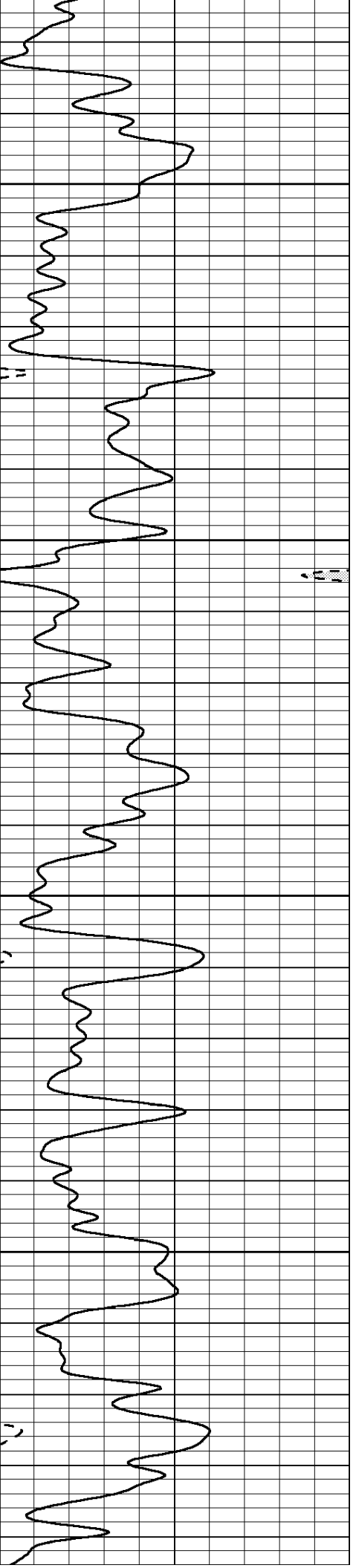
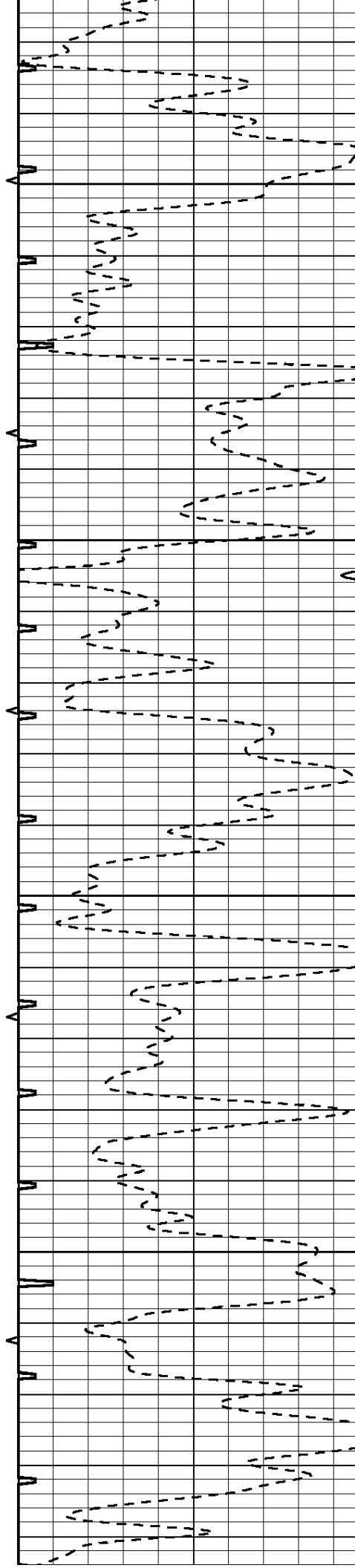


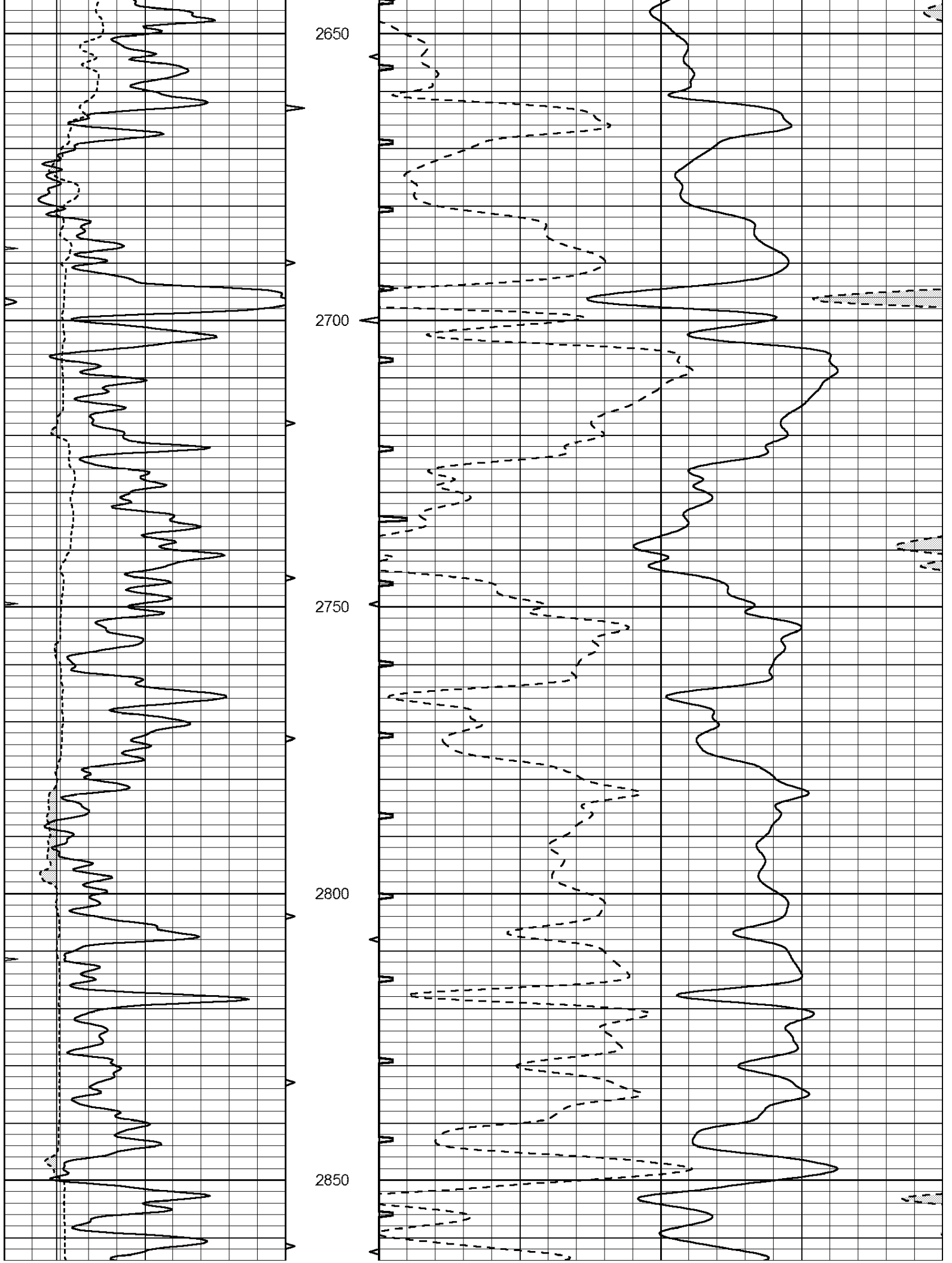
2450

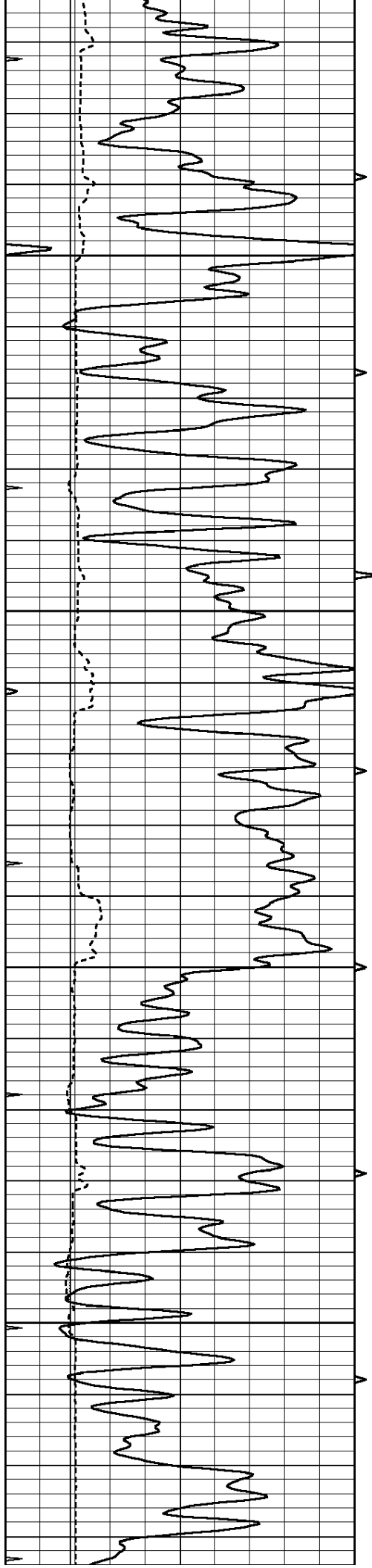
2500

2550

2600





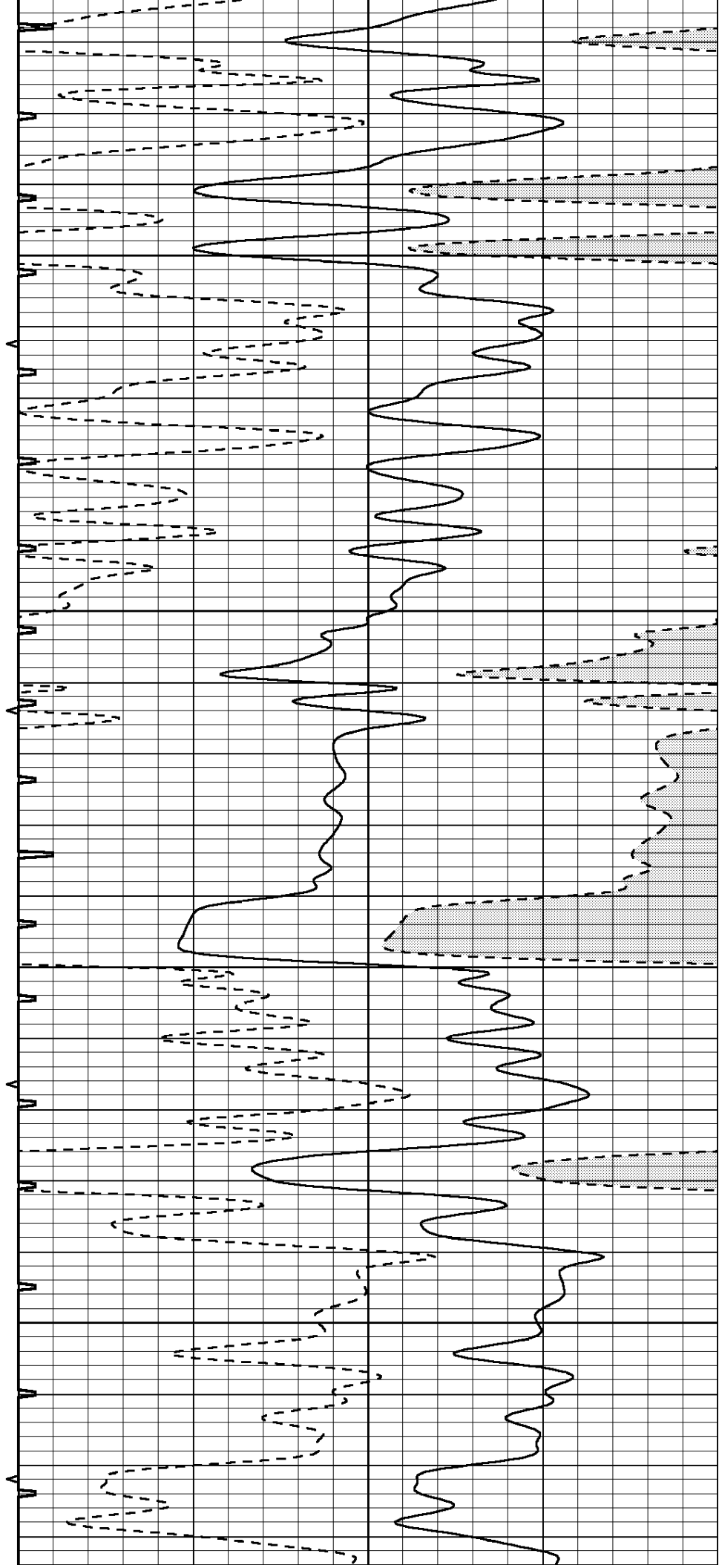


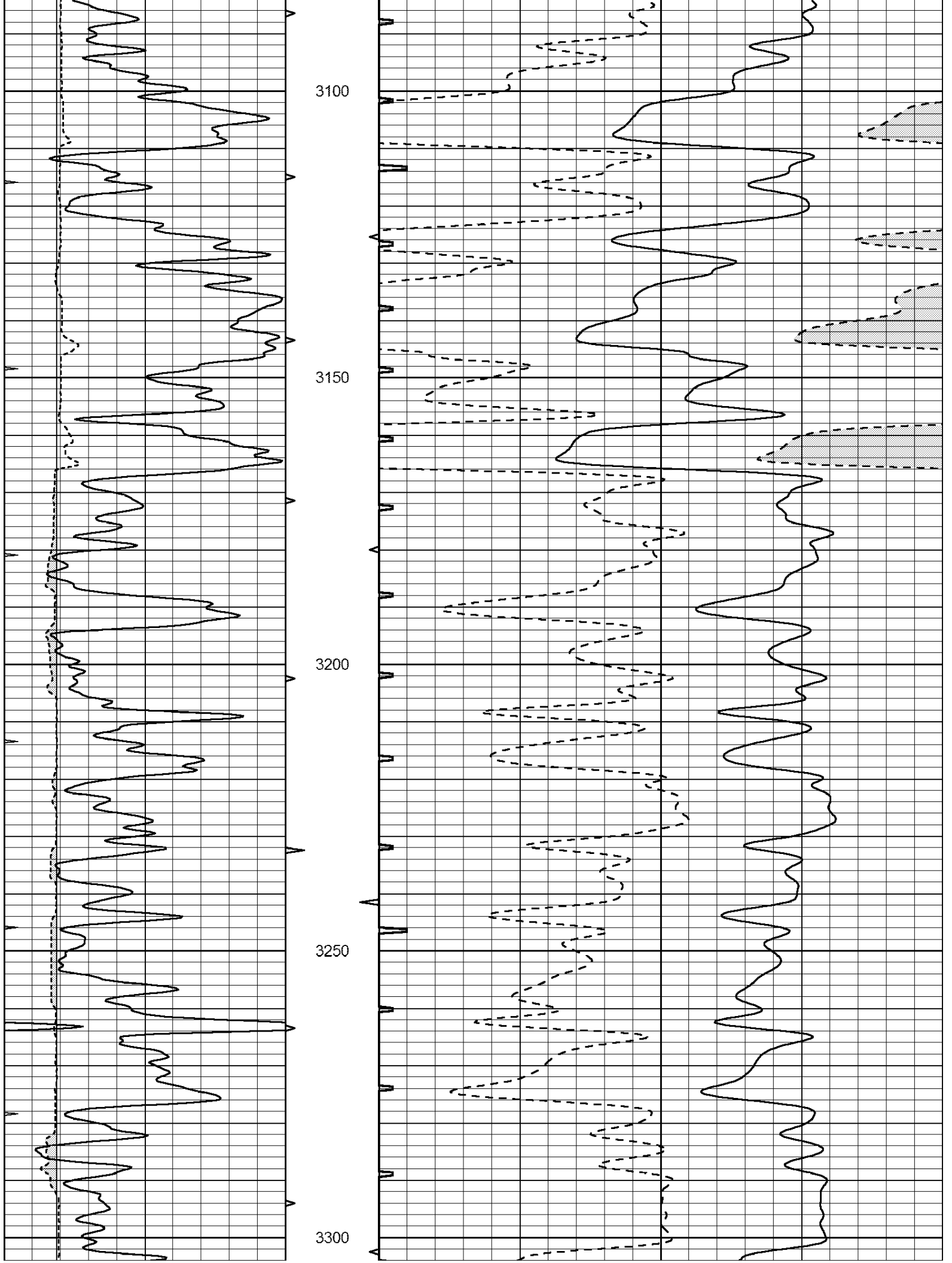
2900

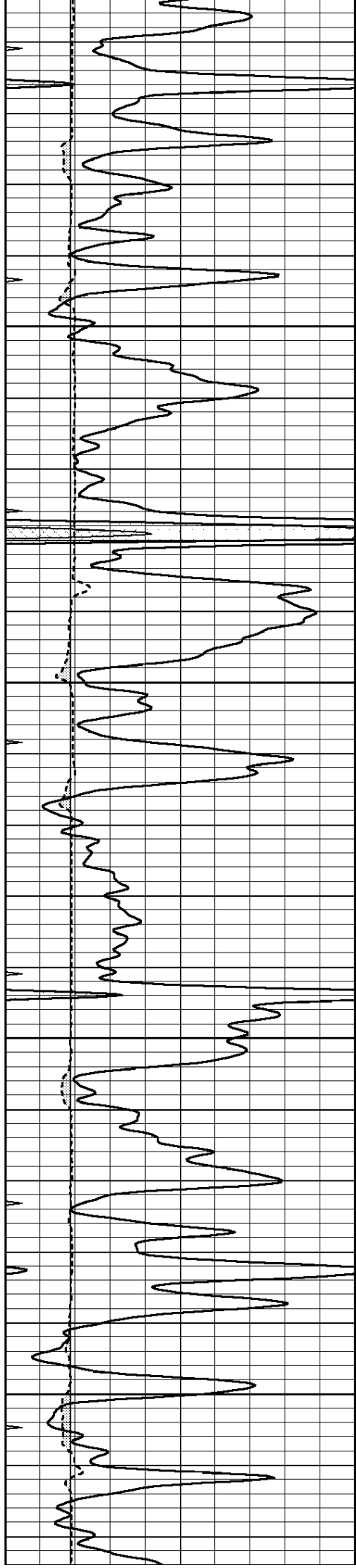
2950

3000

3050





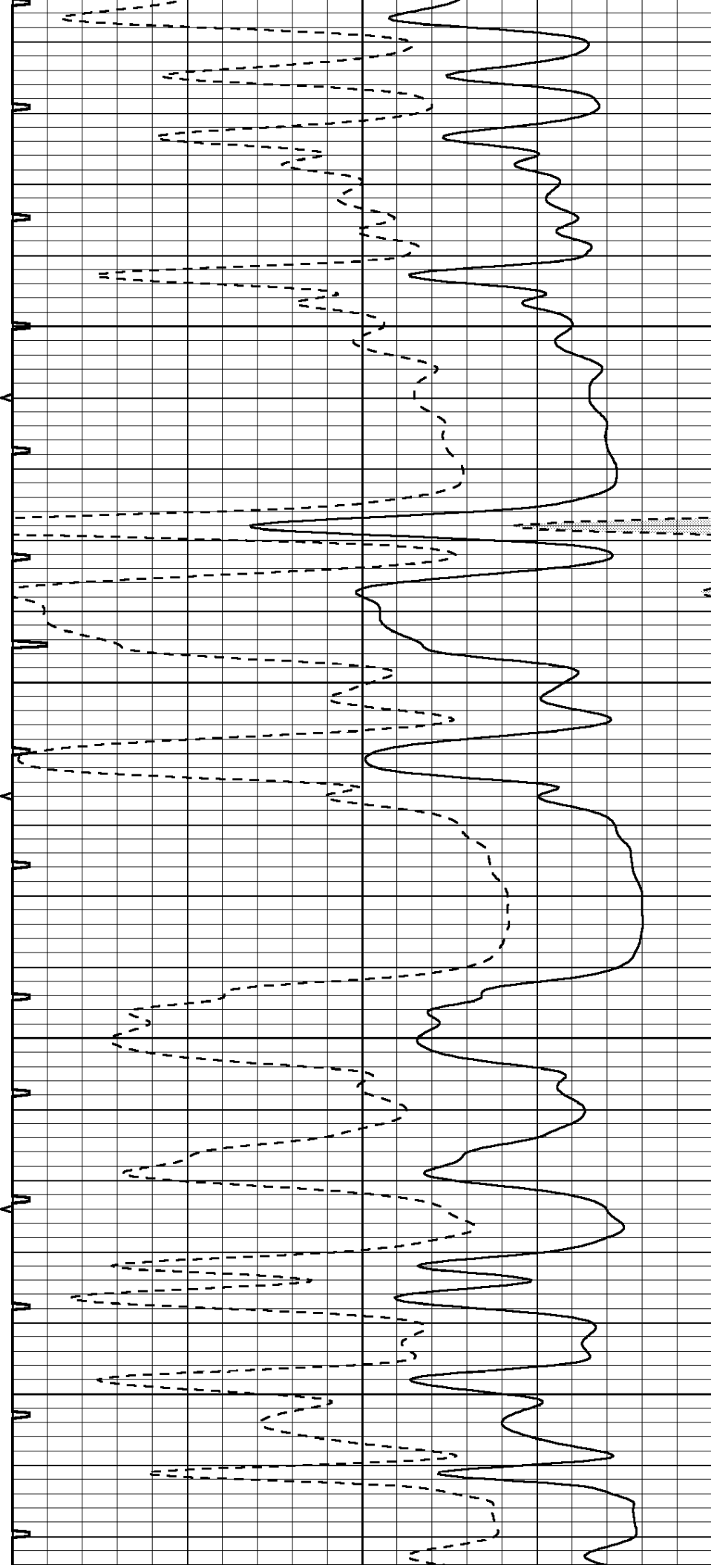


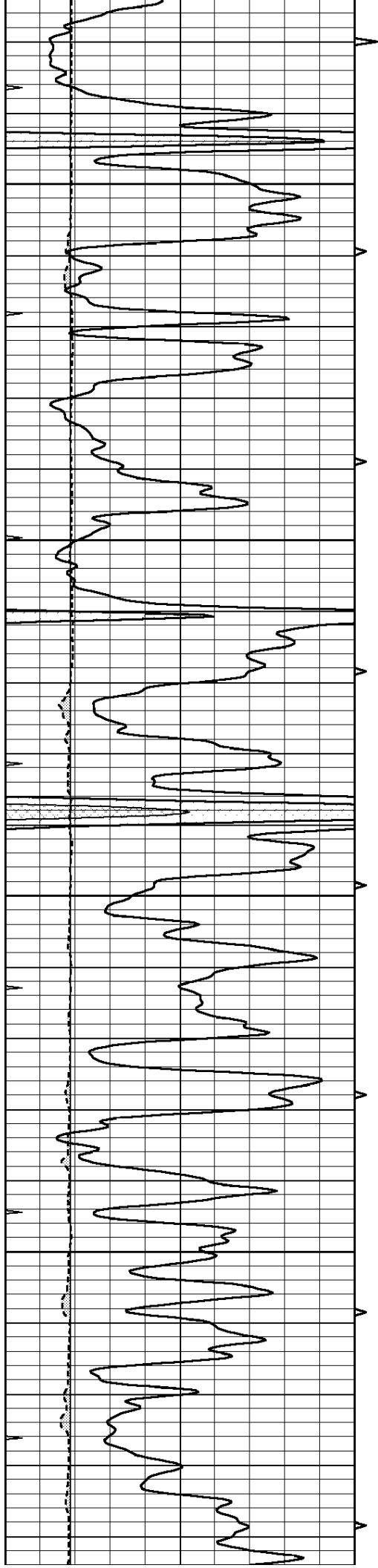
3350

3400

3450

3500



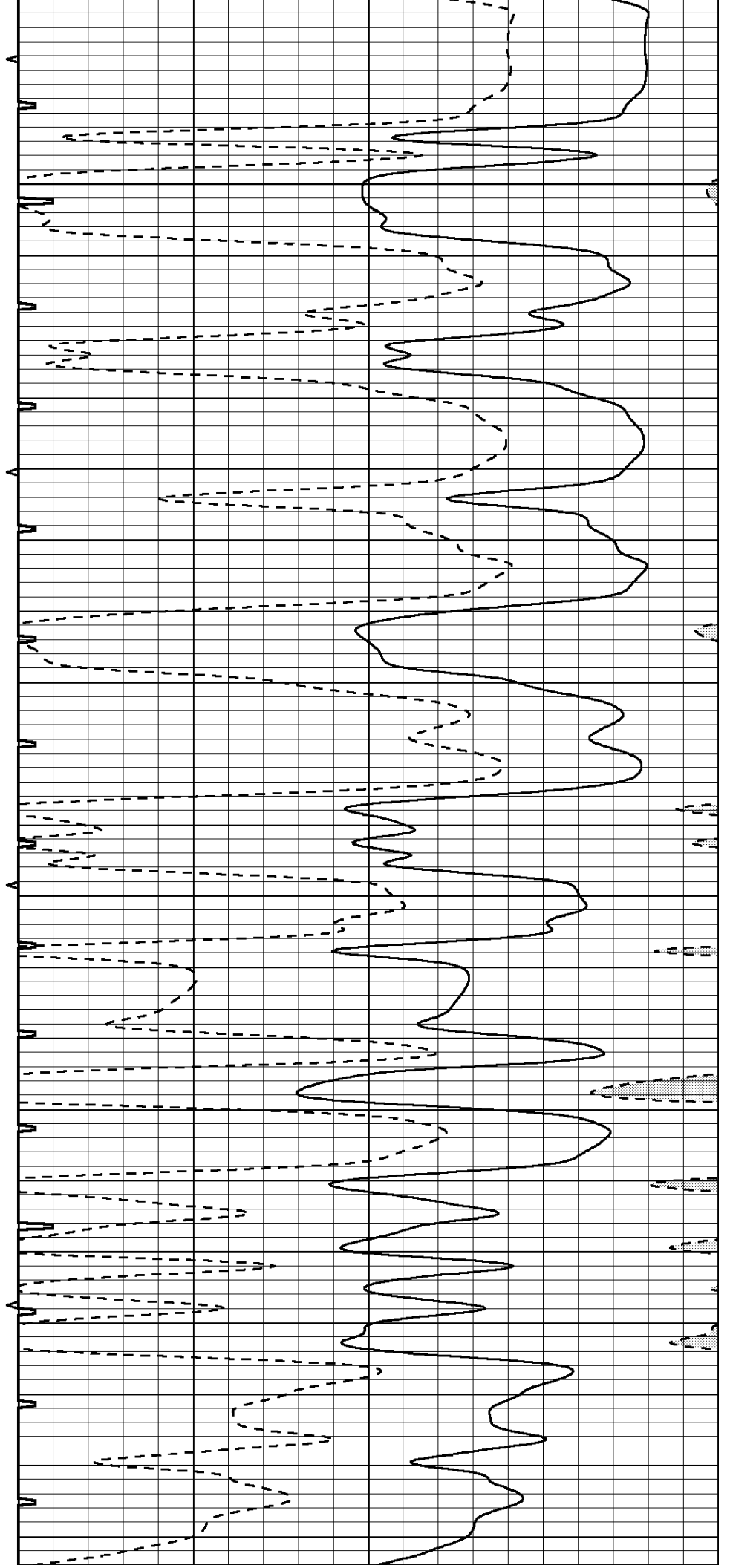


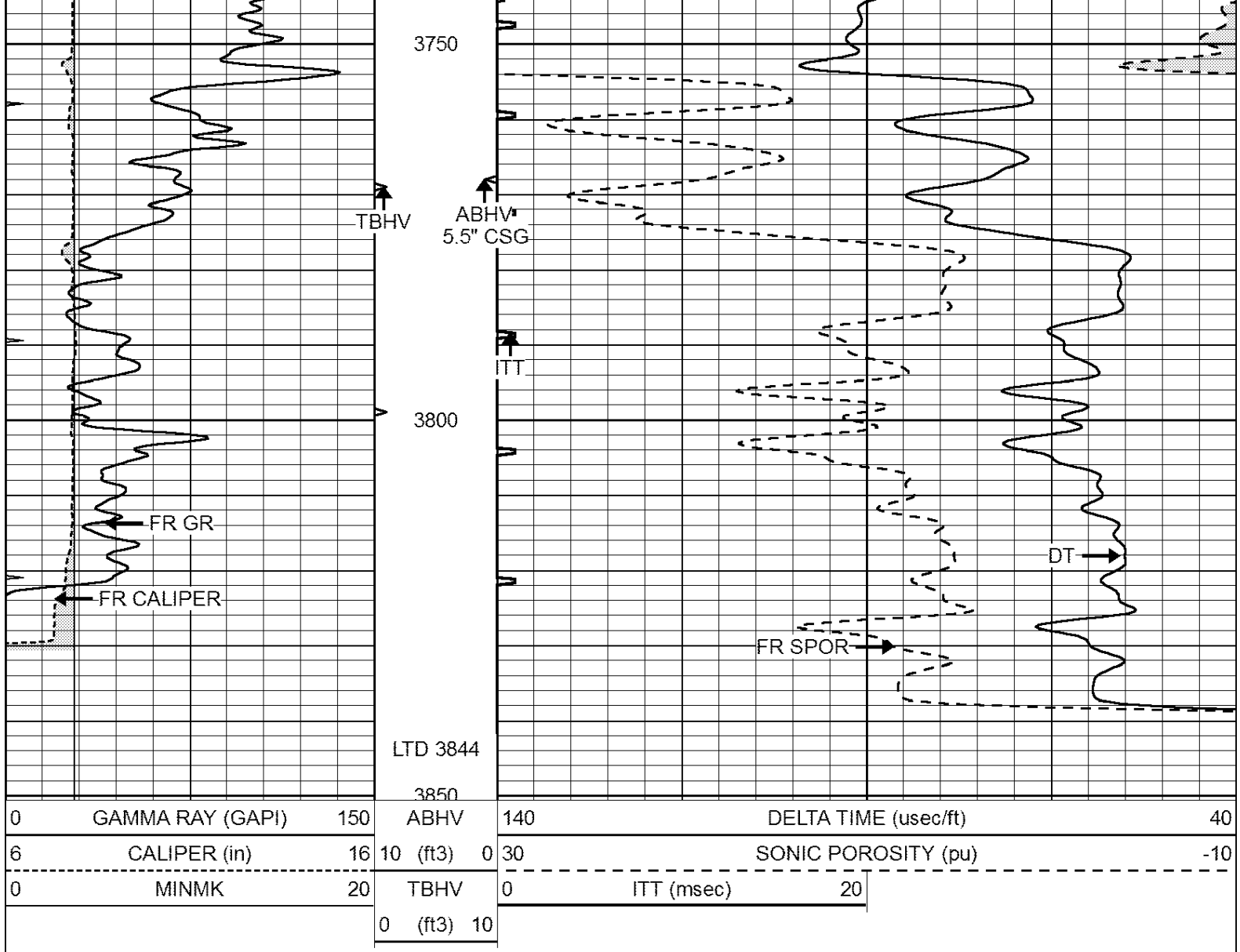
3550

3600

3650

3700





0	GAMMA RAY (GAPI)	150	ABHV	140	DELTA TIME (usec/ft)	40	
6	CALIPER (in)	16	10 (ft3)	0	30	SONIC POROSITY (pu)	-10
0	MINMK	20	TBHV	0	ITT (msec)	20	
			0 (ft3)	10			

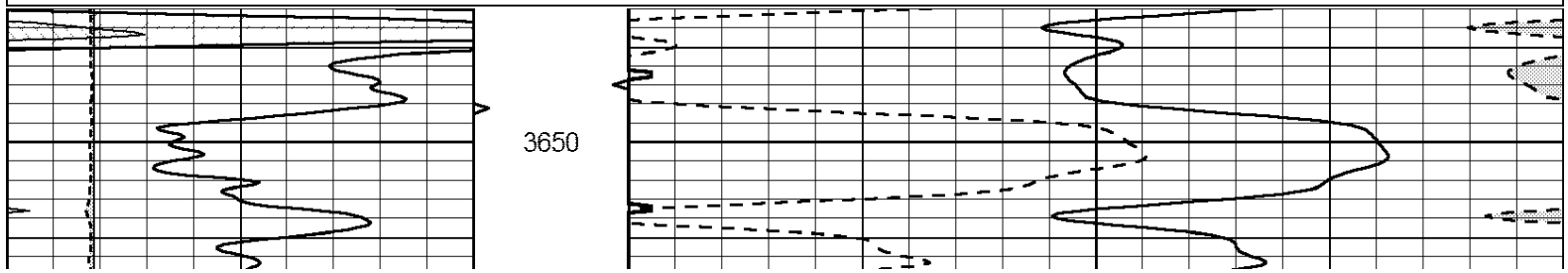


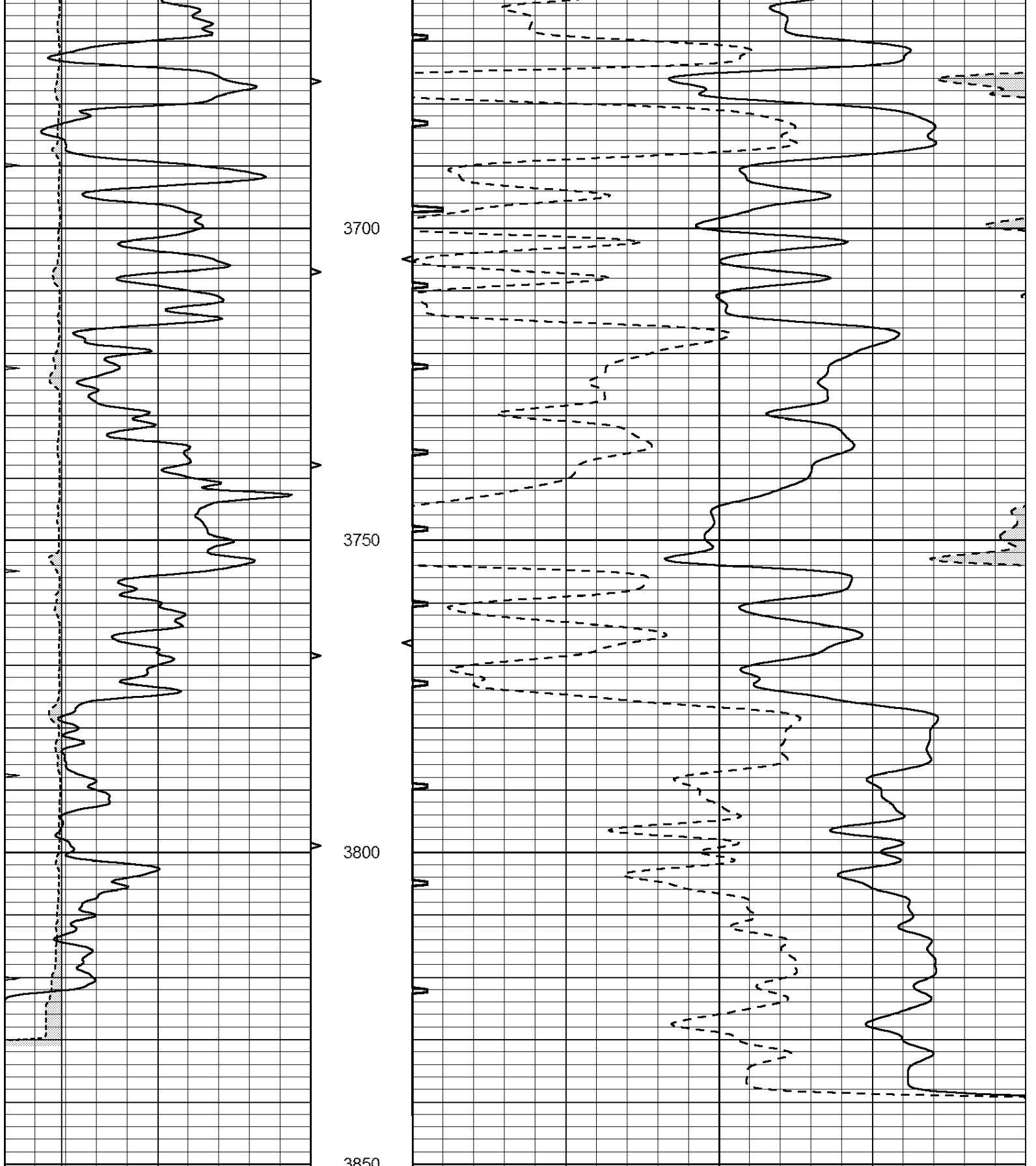
SUPERIOR  
Hays,  
Kansas

# REPEAT SECTION

Database File: 408617ddn.db  
 Dataset Pathname: pass5.1  
 Presentation Format: \_slt  
 Dataset Creation: Mon Apr 02 00:15:32 2012 by Calc Open-Cased 110302  
 Charted by: Depth in Feet scaled 1:240

0	GAMMA RAY (GAPI)	150	ABHV	140	DELTA TIME (usec/ft)	40	
6	CALIPER (in)	16	10 (ft3)	0	30	SONIC POROSITY (pu)	-10
0	MINMK	20	TBHV	0	ITT (msec)	20	
			0 (ft3)	10			





0	GAMMA RAY (GAPI)	150	ABHV	140	DELTA TIME (usec/ft)	40
6	CALIPER (in)	16	10 (ft3)	0 30	SONIC POROSITY (pu)	-10
0	MINMK	20	TBHV	0	ITT (msec)	20
			0 (ft3)	10		