



SUPERIOR
Hays,
Kansas

MICRO
LOG

Company PELICAN HILL OIL & GAS INC.
Well NELSON #2-7
Field
County TREGO
State KANSAS

Company PELICAN HILL OIL & GAS INC.
Well NELSON #2-7
Field
County TREGO State KANSAS

Location: API # : 15-195-22757-0000

1442' FSL & 1500' FEL

SEC 7 TWP 11S RGE 21W

Permanent Datum GROUND LEVEL Elevation 2114
Log Measured From KELLY BUSHING 9' A.G.L.
Drilling Measured From KELLY BUSHING

Other Services
CDL/CNL/DIL
FRAC/SON
Elevation
K.B. 2123
D.F. 2121
G.L. 2114

Date	4/2/12		
Run Number	TWO		
Depth Driller	3841		
Depth Logger	3844		
Bottom Logged Interval	3822		
Top Log Interval	3050		
Casing Driller	8 5/8"@270'		
Casing Logger	269'		
Bit Size	7 7/8"		
Type Fluid in Hole	CHEMICAL MUD	CHLORIDES 3,000 PPM	
Density / Viscosity	9.4/56		
pH / Fluid Loss	11.0/7.2		
Source of Sample	FLOWLINE		
Rm @ Meas. Temp	0.80@71F		
Rmt @ Meas. Temp	0.60@71F		
Rmc @ Meas. Temp	0.96@71F		
Source of Rmf / Rmc	MEASUREMENT		
Rm @ BHT	0.49@115F		
Time Circulation Stopped	2 HOURS		
Time Logger on Bottom			
Maximum Recorded Temperature	115F		
Equipment Number	4010		
Location	HAYS, KANSAS		
Recorded By	JEFF GRONEWEG		
Witnessed By	MARC DOWNING		

<<< Fold Here >>>

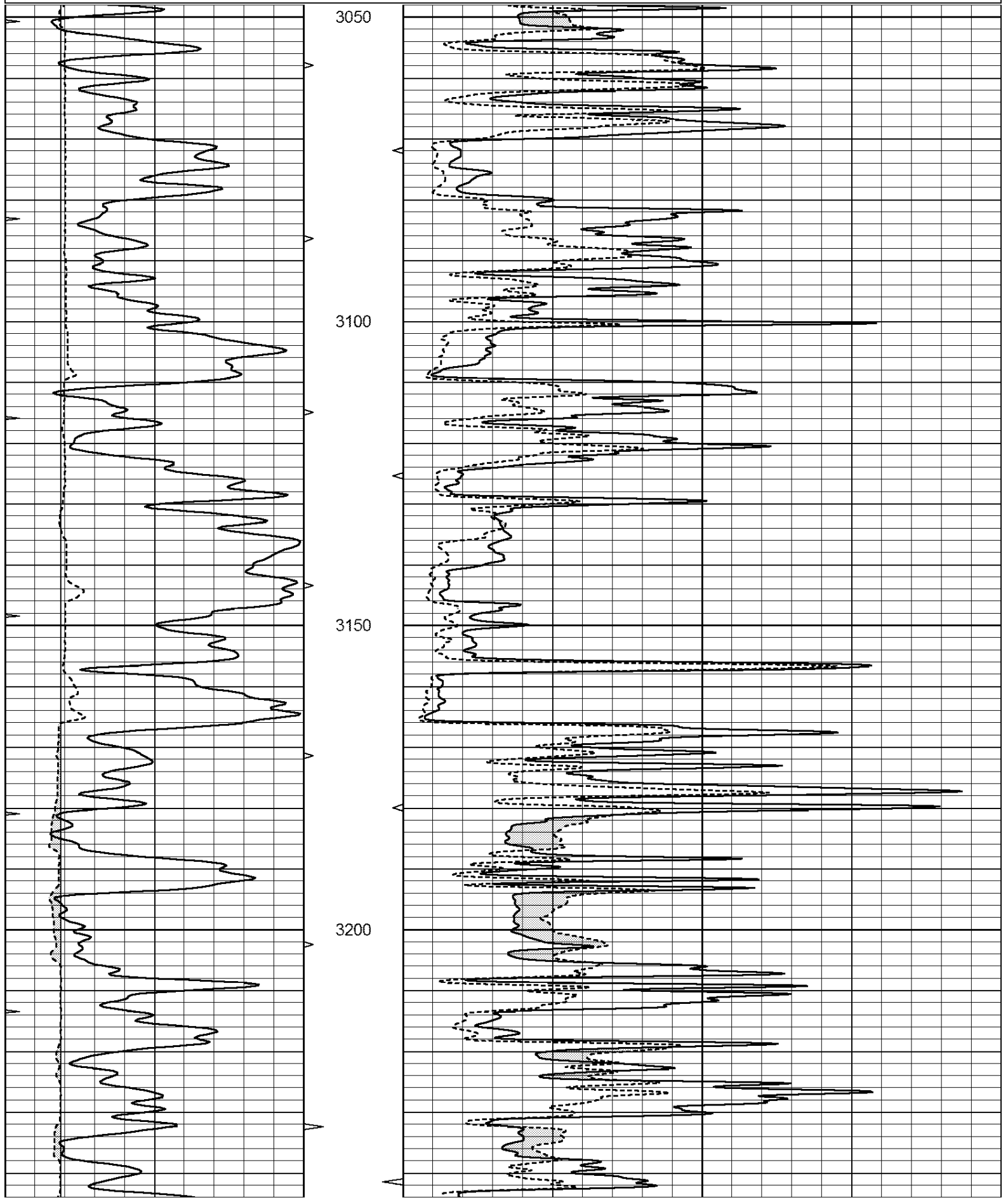
All interpretations are opinions based on inferences from electrical or other measurements and we cannot and do not guarantee the accuracy or correctness of any interpretation, and we shall not, except in the case of gross or willful negligence on our part, be liable or responsible for any loss, costs, damages, or expenses incurred or sustained by anyone resulting from any interpretation made by any of our officers, agents or employees. These interpretations are also subject to our general terms and conditions set out in our current Price Schedule.

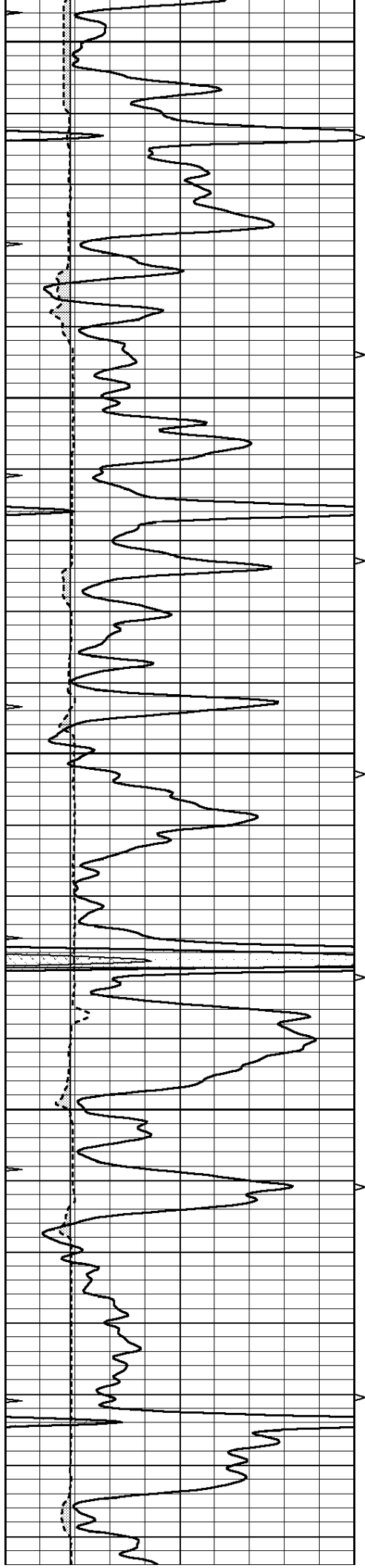
Comments

THANK YOU FOR USING SUPERIOR WELL SERVICE HAYS, KANSAS (785) 628-6395
DIRECTIONS
RIGA, KS - 12 MILES NORTH TO RD A - 2 MILES WEST TO RD 360
2 MILES SOUTH - EAST & NORTH INTO ON NORTH SIDE OF TANK BATTERY

Database File: 408617ddn.db
Dataset Pathname: pass6.1
Presentation Format: _micro
Dataset Creation: Mon Apr 02 00:45:07 2012 by Calc Open-Cased 110302
Charted by: Depth in Feet scaled 1:240

0	GAMMA RAY (GAPI)	150	ABHV	0	MEL1.5 (Ohm-m)	40
6	CALIPER (in)	16	10 (ft3)	0	MEL2.0 (Ohm-m)	40
0	MINMK	20	TBHV			
			0 (ft3)	10		





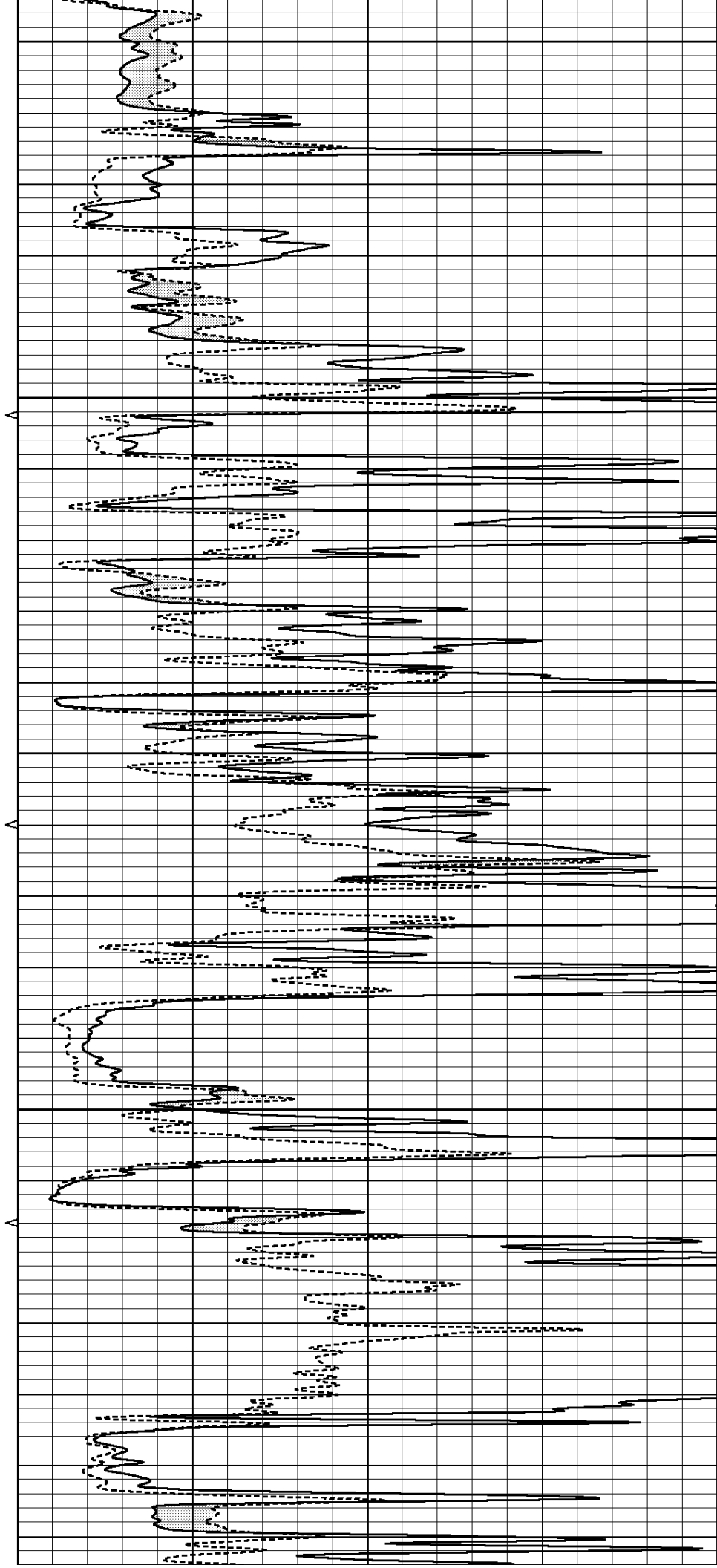
3250

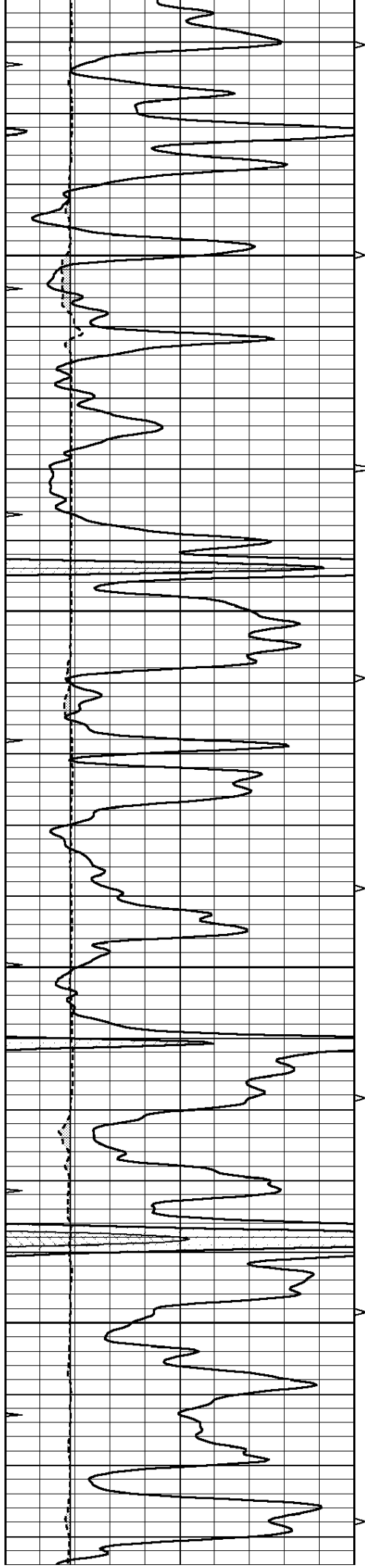
3300

3350

3400

3450



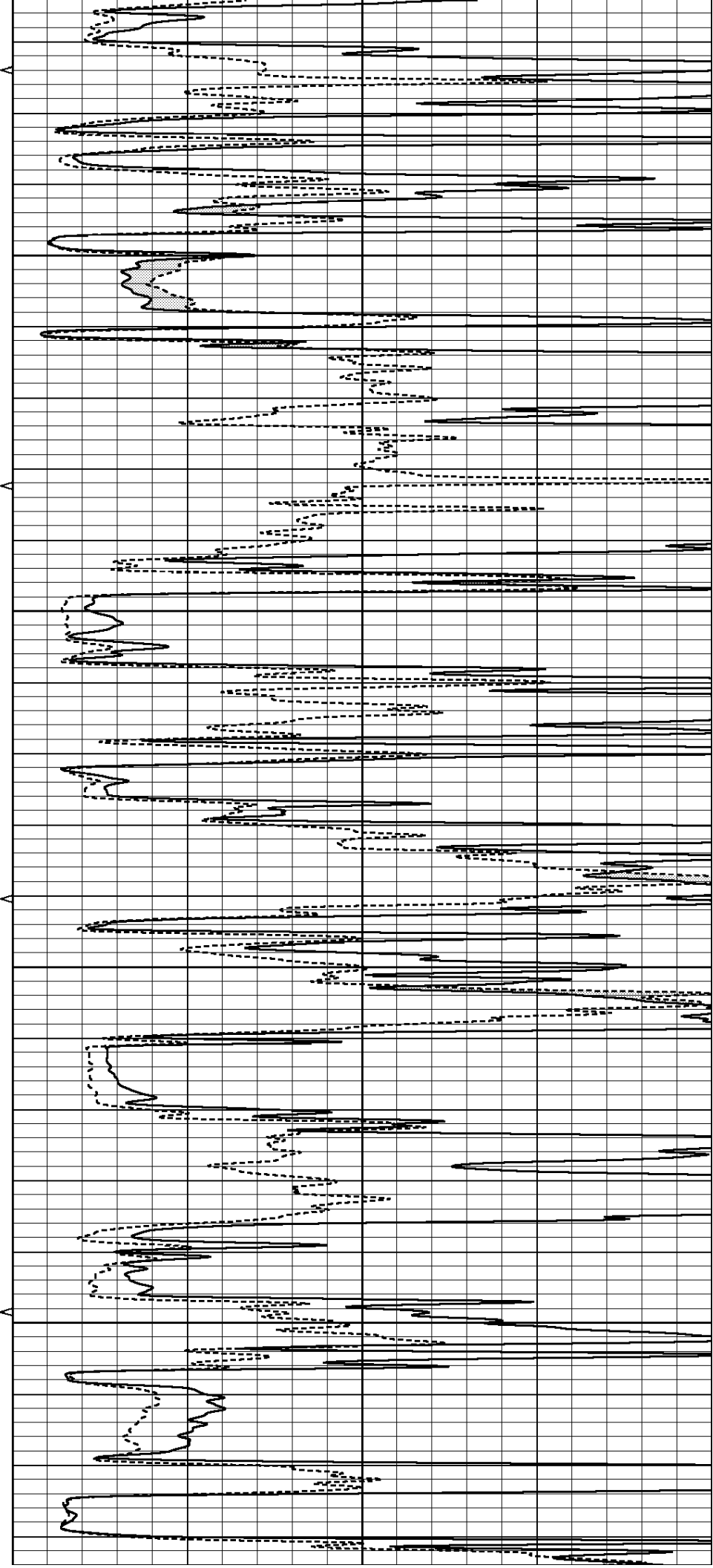


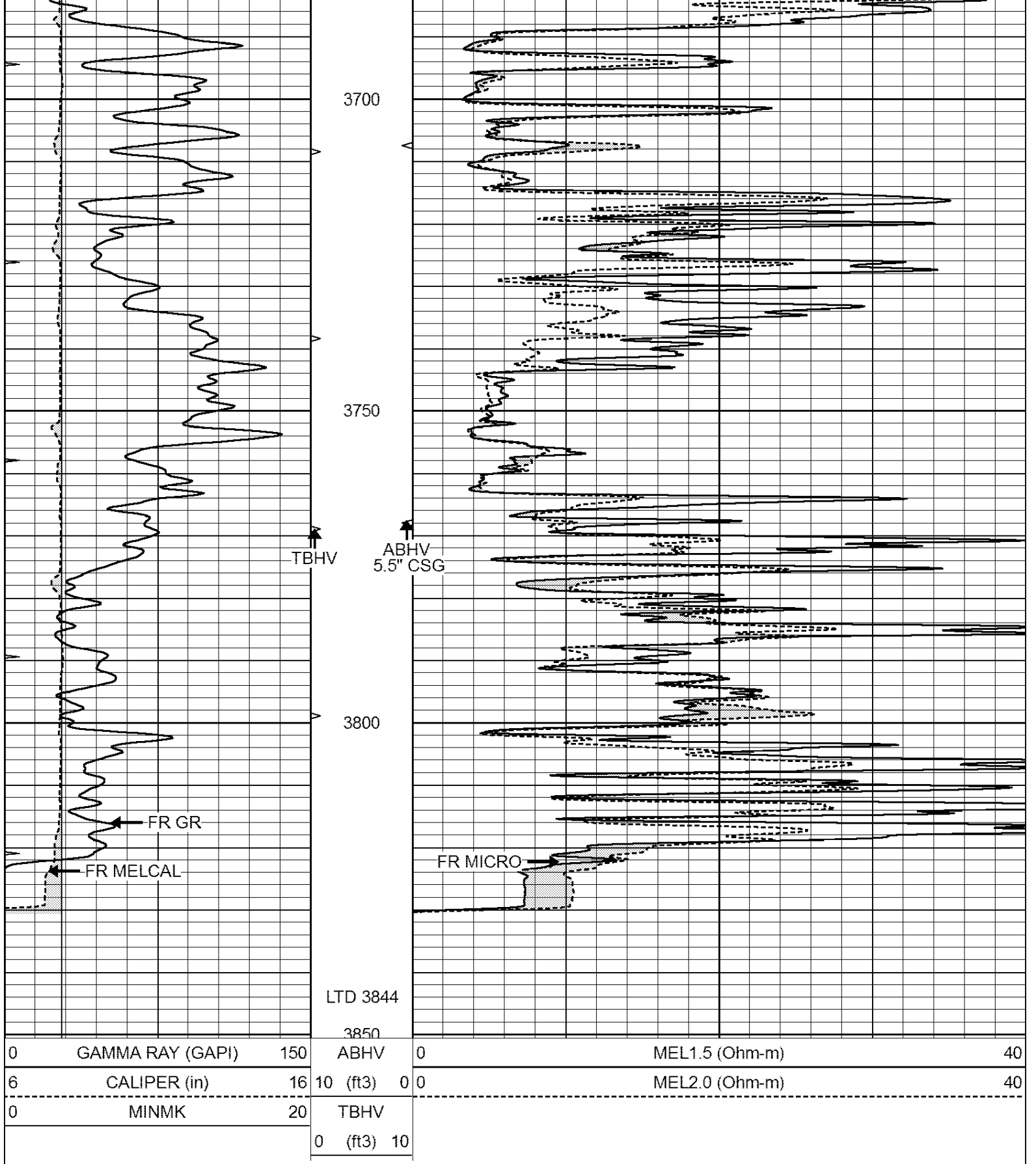
3500

3550

3600

3650





SUPERIOR
Hays,
Kansas

REPEAT SECTION

0	GAMMA RAY (GAPI)	150	ABHV	0	MEL1.5 (Ohm-m)	40
6	CALIPER (in)	16	10 (ft3)	0 0	MEL2.0 (Ohm-m)	40
0	MINMK	20	TBHV			
			0 (ft3)	10		

