



**SUPERIOR**  
Hays,  
Kansas

**COMPENSATED  
DENSITY / NEUTRON  
LOG**

Company PELICAN HILL OIL & GAS INC.  
Well NELSON #2-7  
Field  
County TREGO  
State KANSAS

Company PELICAN HILL OIL & GAS INC.  
Well NELSON #2-7  
Field  
County TREGO State KANSAS

Location: API # : 15-195-22757-0000  
1442' FSL & 1500' FEL  
SEC 7 TWP 11S RGE 21W  
Permanent Datum GROUND LEVEL Elevation 2114  
Log Measured From KELLY BUSHING 9' A.G.L.  
Drilling Measured From KELLY BUSHING  
Other Services  
DIL/FRAC  
MEL/SON  
Elevation  
K.B. 2123  
D.F. 2121  
G.L. 2114

Date	4/2/12		
Run Number	ONE		
Depth Driller	3841		
Depth Logger	3844		
Bottom Logged Interval	3820		
Top Log Interval	3050		
Casing Driller	8 5/8"@270'		
Casing Logger	269'		
Bit Size	7 7/8"		
Type Fluid in Hole	CHEMICAL MUD	CHLORIDES 3,000 PPM	
Density / Viscosity	9.4/56		
pH / Fluid Loss	11.0/7.2		
Source of Sample	FLOWLINE		
Rm @ Meas. Temp	0.80@71F		
Rmt @ Meas. Temp	0.60@71F		
Rmc @ Meas. Temp	0.96@71F		
Source of Rmf / Rmc	MEASUREMENT		
Rm @ BHT	0.49@115F		
Time Circulation Stopped	2 HOURS		
Time Logger on Bottom			
Maximum Recorded Temperature	115F		
Equipment Number	4010		
Location	HAYS, KANSAS		
Recorded By	JEFF GRONEWEG		
Witnessed By	MARC DOWNING		

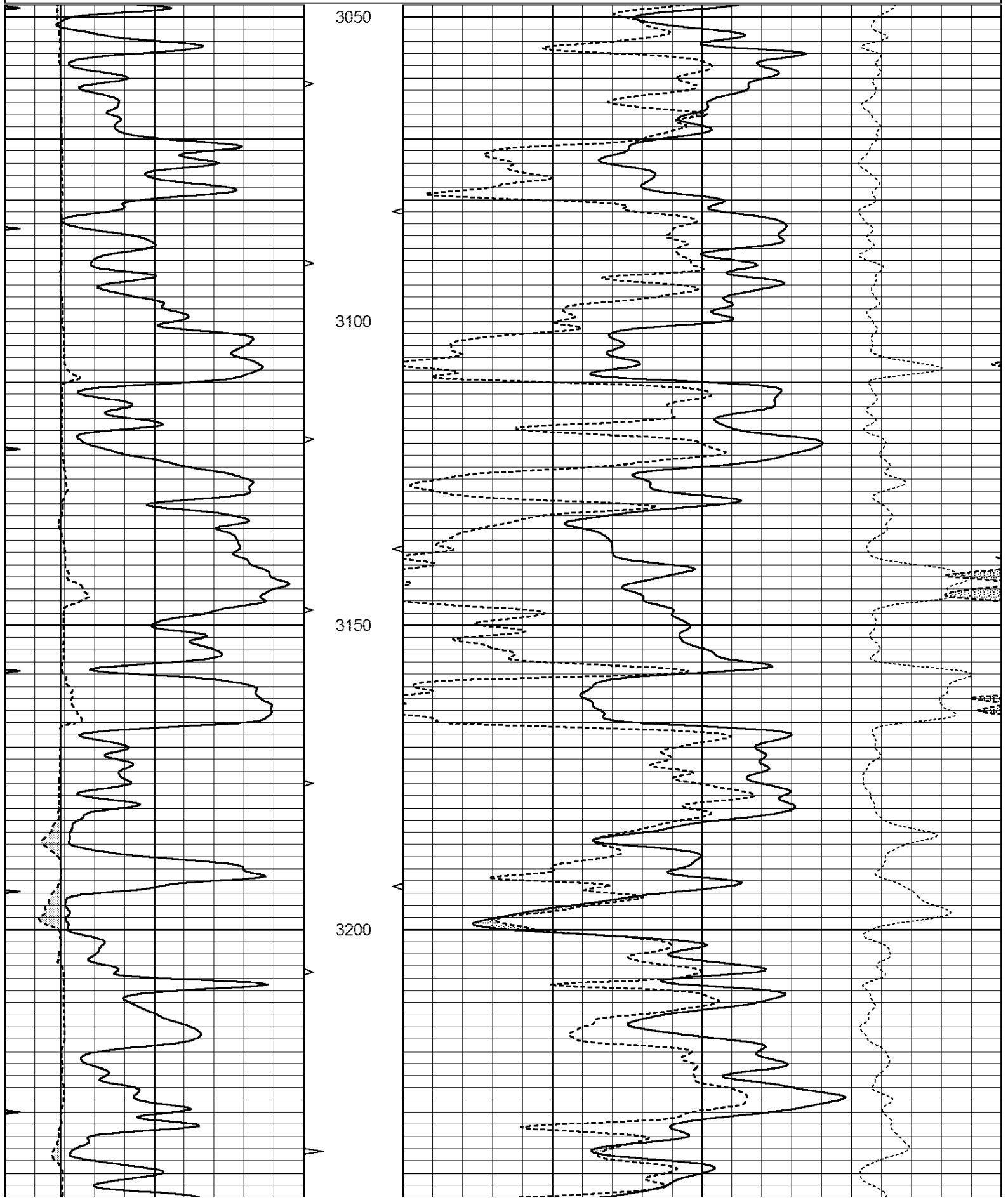
<<< Fold Here >>>

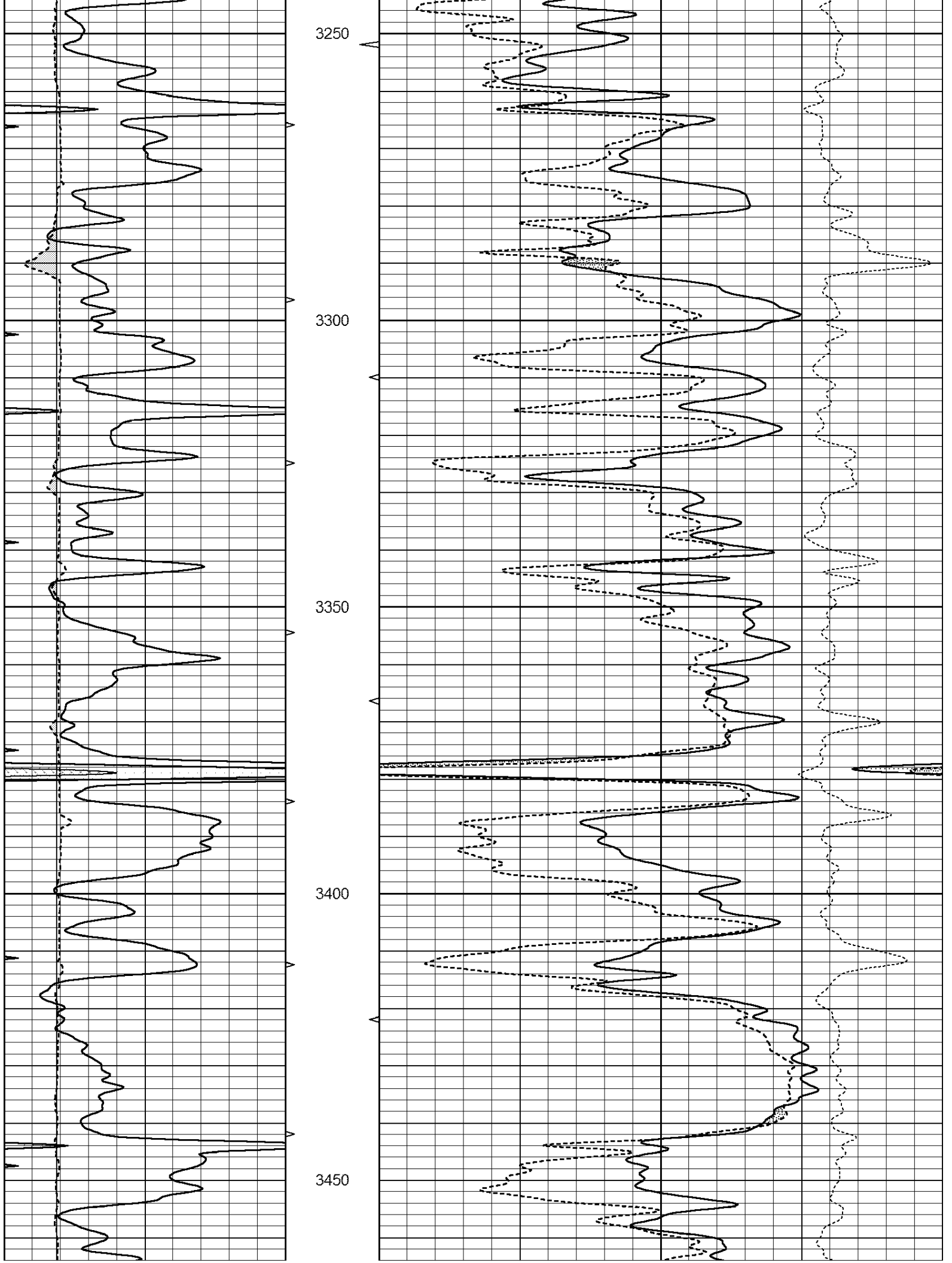
All interpretations are opinions based on inferences from electrical or other measurements and we cannot and do not guarantee the accuracy or correctness of any interpretation, and we shall not, except in the case of gross or willful negligence on our part, be liable or responsible for any loss, costs, damages, or expenses incurred or sustained by anyone resulting from any interpretation made by any of our officers, agents or employees. These interpretations are also subject to our general terms and conditions set out in our current Price Schedule.

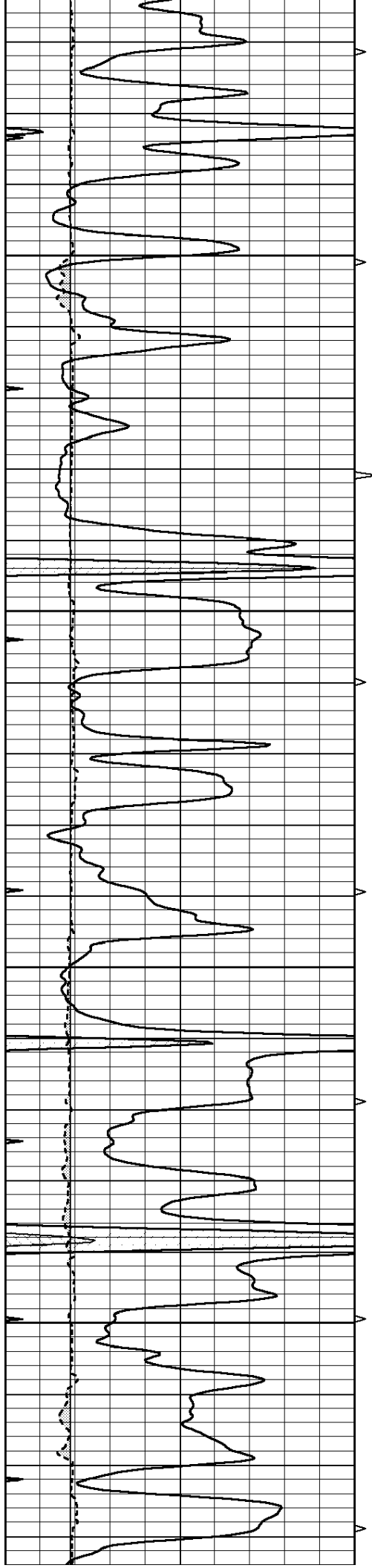
Comments

THANK YOU FOR USING SUPERIOR WELL SERVICE HAYS, KANSAS (785) 628-6395  
DIRECTIONS  
RIGA, KS - 12 MILES NORTH TO RD A - 2 MILES WEST TO RD 360  
2 MILES SOUTH - EAST & NORTH INTO ON NORTH SIDE OF TANK BATTERY

0	GAMMA RAY (GAPI)	150	ABHV	30	COMPENSATED DENSITY (pu)	-10
6	CALIPER (in)	16	10 (ft3)	0 30	COMPENSATED NEUTRON (pu)	-10
0	MINMK	20	TBHV		-0.25 CORRECTION (g/cc)	0.25
			0 (ft3)	10		





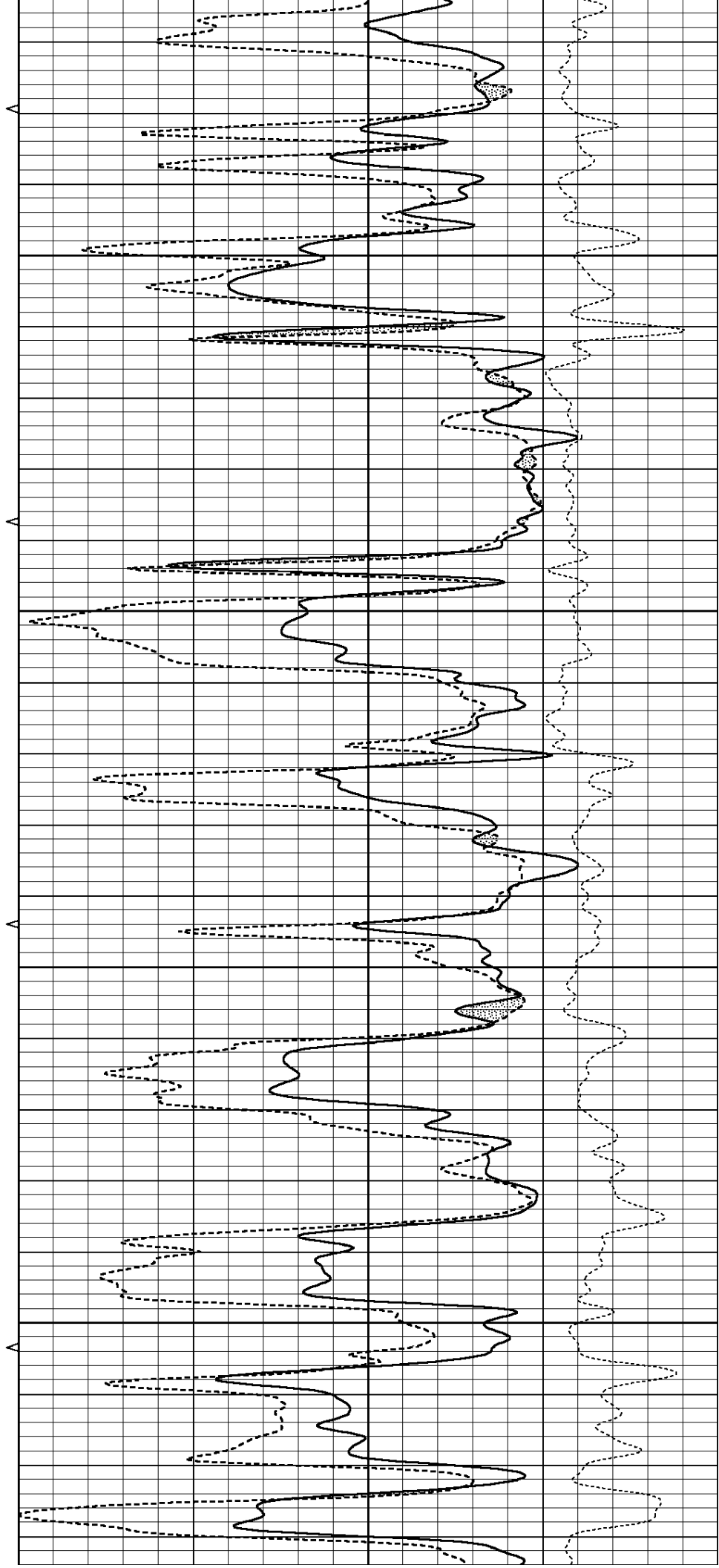


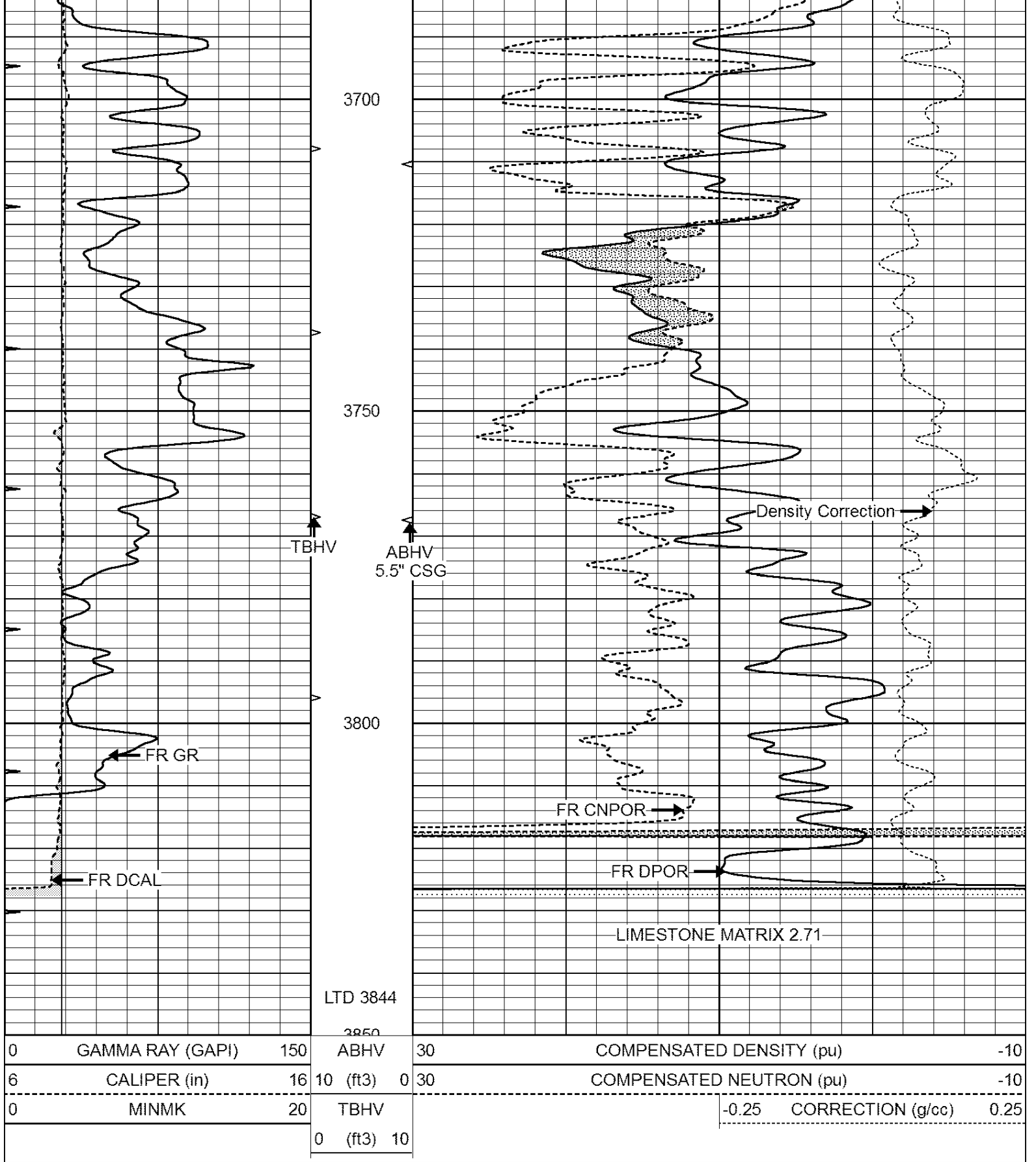
3500

3550

3600

3650

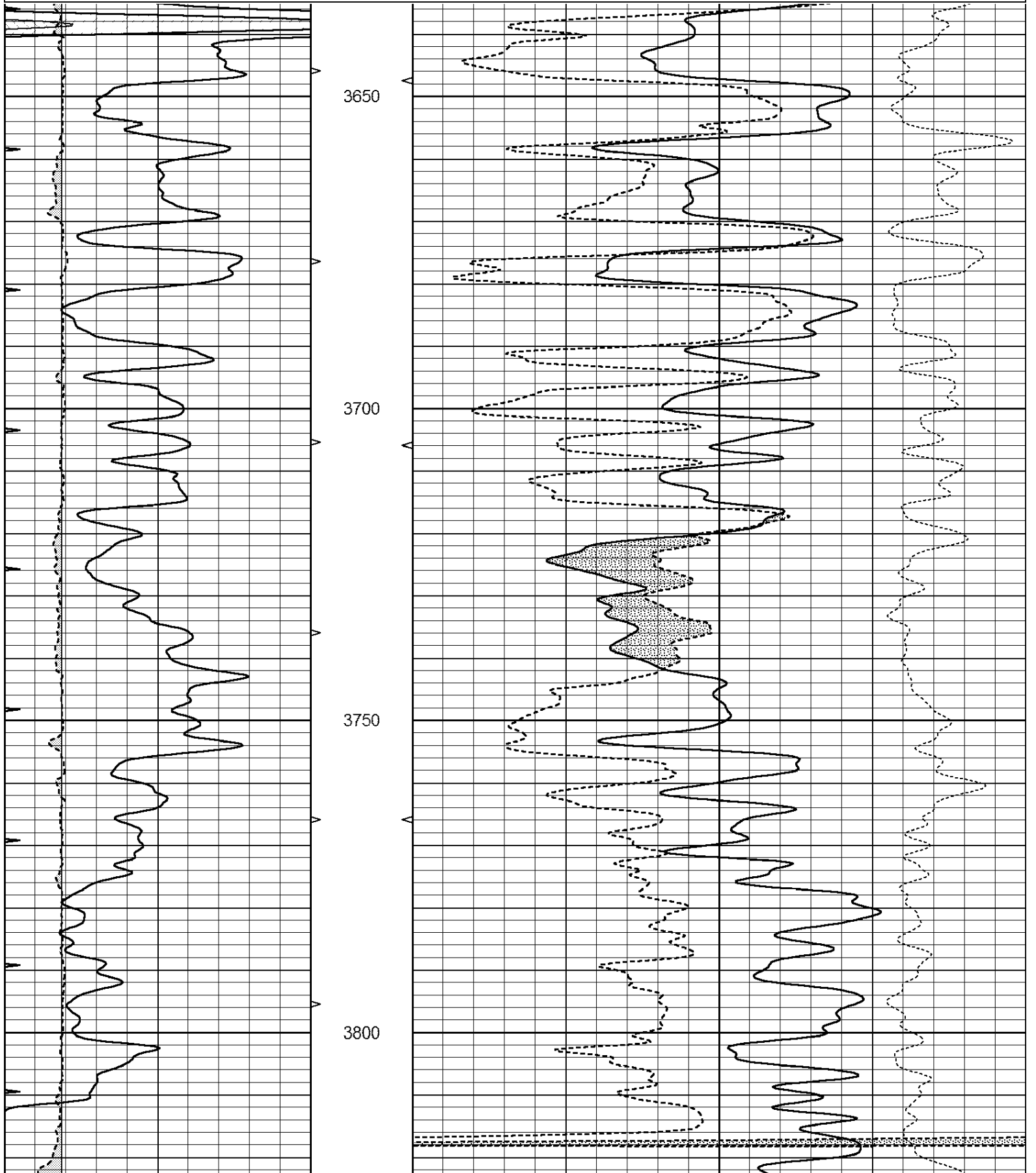




SUPERIOR  
Hays,  
Kansas

# REPEAT SECTION

0	GAMMA RAY (GAPI)	150	ABHV	30	COMPENSATED DENSITY (pu)	-10
6	CALIPER (in)	16	10 (ft3)	0 30	COMPENSATED NEUTRON (pu)	-10
0	MINMK	20	TBHV		-0.25 CORRECTION (g/cc)	0.25
			0 (ft3)	10		





## PRE-SURVEY VERIFICATION

Detector	Readings	Measured	Target
Short Space	cps		
Long Space	cps	pu	pu

## POST-SURVEY VERIFICATION

Detector	Readings	Measured	Target
Short Space	cps		
Long Space	cps	pu	pu

## Gamma Ray Calibration Report

Serial Number:	070559	
Tool Model:	OPEN_GR	
Performed:	Sat Mar 24 18:51:25 2012	
Calibrator Value:	1.0	GAPI
Background Reading:	0.0	cps
Calibrator Reading:	1.0	cps
Sensitivity:	0.3000	GAPI/cps