

MIDWEST SURVEYS
 LOGGING - PERFORATING - CONSULTING SERVICES
 P.O. Box 68, Osawatomie, KS 66064
 913.755.2128

GAMMA RAY / NEUTRON / CCL

File No.

Company **Altavista Energy, Inc.**

Well **McCann "B" No. A1-10**

Field **Gardner**

County **Johnson**

State **Kansas**

Location **1275' FSL & 1105' FEL
NW-NW-SE-SE**

Other Services
Perforate

Sec. 15 Twp. 14s Rge. 22e
 Permanent Datum GL Elevation NA
 Log Measured From GL
 Drilling Measured From GL

Date 3-16-2012

Run Number One

Depth Driller 919.0

Bottom Logged Interval 889.5

Top Log Interval 20.0

Fluid Level Full

Type Fluid Water

Density / Viscosity NA

Salinity - PPM Cl NA

Max. Recorded Temp NA

Estimated Cement Top 0.0

Equipment No. Location 104 Osawatomie

Recorded By Gary Whitlisch

Witnessed By Doug Evans

BORE-HOLE RECORD		CASING RECORD	
RUN No.	BIT FROM TO	SIZE WGT.	FROM TO
One	9.675' 0.0	7.00"	22.0
Two	5.625' 22.0	2.675"	905.4
		Set	At

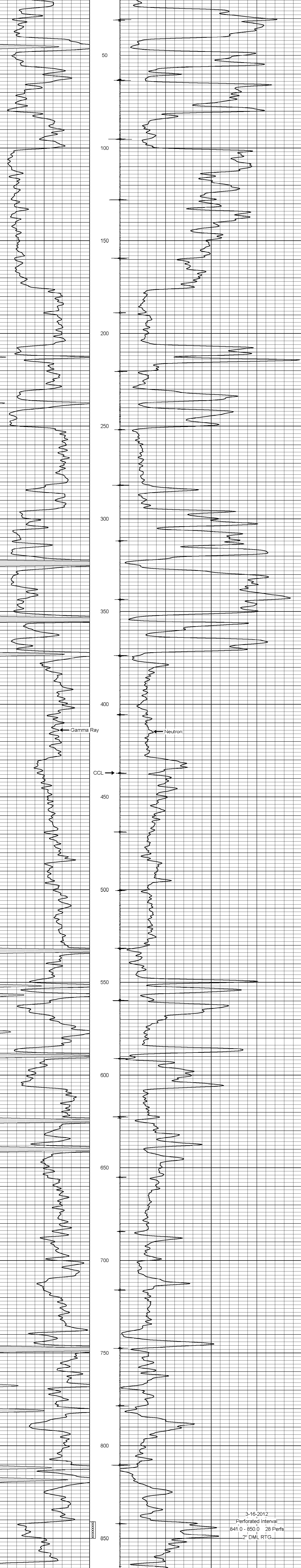
<<< Fold Here >>>

All interpretations are opinions based on inferences from electrical or other measurements and we cannot and do not guarantee the accuracy or correctness of any interpretation, and we shall not, except in the case of gross or willful negligence on our part, be liable or responsible for any loss, costs, damages, or expenses incurred or sustained by anyone resulting from any interpretation made by any of our officers, agents or employees. These interpretations are also subject to our general terms and conditions set out in our current Price Schedule.

Comments

Drilling Contractor :
Town Oilfield Services

Database File: mcann10aib.db
 Dataset Pathname: pass1
 Presentation Format: gr-n-ccl
 Dataset Creation: Fri Mar 16 13:44:16 2012 by Log SCH 111116
 Charted by: Depth in Feet scaled 1:240



3-16-2012
 Perforated Interval
 841.0 - 850.0 28 Perfs.
 2" DML RTG