



MIDWEST SURVEYS
 LOGGING - PERFORATING - CONSULTING SERVICES
 P.O. Box 68, Osawatomie, KS 66064
 913.755.2128

GAMMA RAY / NEUTRON / CCL

File No.

Company: **Altavista Energy, Inc.**

Well: **McCann "B" No. A-2**

Field: **Gardner**

County: **Johnson**

State: **Kansas**

Location: **2475' FSL & 790' FEL**

Other Services: **Perforate**

Sec. 15 Typ. 14S Rge. 22e

Permanent Datum: **GL**

Log Measured From: **GL**

Drilling Measured From: **GL**

Elevation: **NA**

Date: **03-05-2012**

Run Number: **One**

Depth Driller: **833.0**

Depth Logger: **852.0**

Bottom Logged Interval: **200.0**

Top Log Interval: **Fill**

Fluid Level: **Water**

Type Fluid: **Water**

Density / Viscosity: **NA**

Salinity - PPM Cl: **NA**

Max. Recorded Temp: **NA**

Estimated Cement Top: **0.0**

Equipment No. Location: **107 Osawatomie**

Recorded By: **Steve Windisch**

Witnessed By: **Doug Evans**

BORE-HOLE RECORD				CASING RECORD			
Run No.	BIT	FROM	TO	SIZE	WGT.	FROM	TO
One	9.875"	0.0	22.0	7.00"	0.0	0.0	22.0
Two	5.625"	22.0	920.0	2.875"	0.0	894.50	893.25
				Baffle	Set	At	893.25

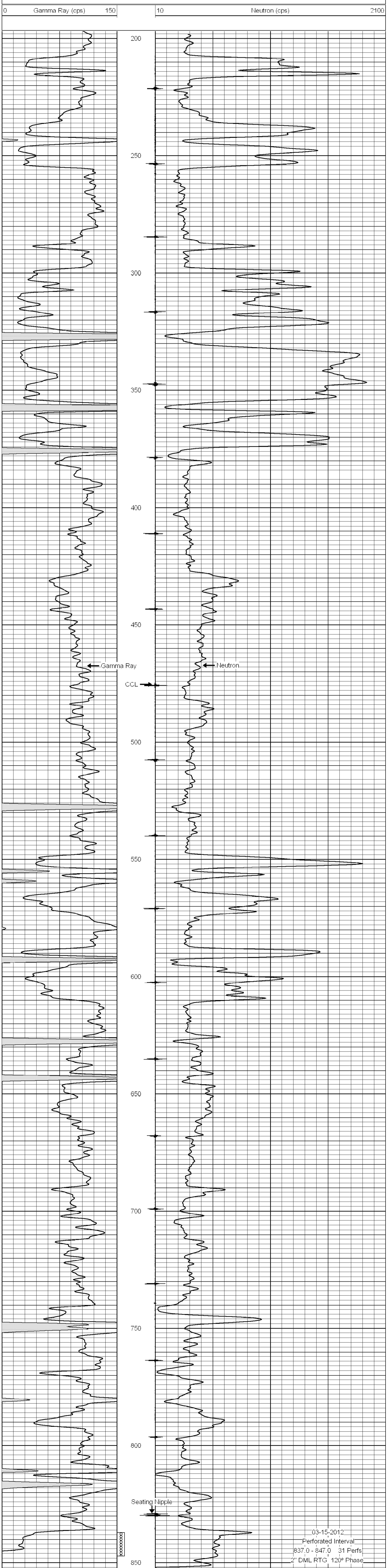
<<< Fold Here >>>

All interpretations are opinions based on inferences from electrical or other measurements and we cannot and do not guarantee the accuracy or correctness of any interpretation, and we shall not, except in the case of gross or willful negligence on our part, be liable or responsible for any loss, costs, damages, or expenses incurred or sustained by anyone resulting from any interpretation made by any of our officers, agents or employees. These interpretations are also subject to our general terms and conditions set out in our current Price Schedule.

Comments

Drilling Contractor :
 Town Oilfield Services, Inc.

Database File: mcann2ab.db
 Dataset Pathname: pass1
 Presentation Format: gr-n-ccl
 Dataset Creation: Mon Mar 05 10:49:45 2012 by Log SCH 111116
 Charted by: Depth in Feet scaled 1:240



03-15-2012
 Perforated Interval
 837.0 - 847.0 31 Perfs
 2" DML RTG 120° Phase