



SUPERIOR
Hays,
Kansas

MICRO
LOG

Company	PFEIFER EXPLORATION, LLC.	Company	PFEIFER EXPLORATION, LLC.
Well	BRAUN - WERTH #3-1	Well	BRAUN - WERTH #3-1
Field	WILDCAT	Field	WILDCAT
County	ELLIS	County	ELLIS
State	KANSAS	State	KANSAS
Location:	API # : 15-051-26286-0000	Other Services	CDL/CNL DIL
	1400' FNL & 710' FWL		
	SEC 3 TWP 15S RGE 18W		
Permanent Datum	GROUND LEVEL	Elevation	2017
Log Measured From	KELLY BUSHING 8' A.G.L.		
Drilling Measured From	KELLY BUSHING		

Date	3/24/12
Run Number	TWO
Depth Driller	3700
Depth Logger	3702
Bottom Logged Interval	3700
Top Log Interval	2900
Casing Driller	8 5/8"@222'
Casing Logger	222
Bit Size	7 7/8"
Type Fluid in Hole	CHEMICAL MUD
Density / Viscosity	9.0/49
pH / Fluid Loss	11.5/7.2
Source of Sample	FLOWLINE
Rm @ Meas. Temp	.500@78F
Rmt @ Meas. Temp	.375@78F
Rmc @ Meas. Temp	.600@78F
Source of Rmf / Rmc	MEASUREMENT
Rm @ BHT	.345@113F
Time Circulation Stopped	3.5 HOURS
Time Logger on Bottom	6:30 P.M.
Maximum Recorded Temperature	113F
Equipment Number	4010
Location	HAYS, KANSAS
Recorded By	JEFF LUEBBERS
Witnessed By	ROGER MOSES
	JAY PFEIFER

<<< Fold Here >>>

All interpretations are opinions based on inferences from electrical or other measurements and we cannot and do not guarantee the accuracy or correctness of any interpretation, and we shall not, except in the case of gross or willful negligence on our part, be liable or responsible for any loss, costs, damages, or expenses incurred or sustained by anyone resulting from any interpretation made by any of our officers, agents or employees. These interpretations are also subject to our general terms and conditions set out in our current Price Schedule.

Comments

THANK YOU FOR USING SUPERIOR WELL SERVICE HAYS, KANSAS (785) 628-6395
 DIRECTIONS
 HAYS, KS. 6 1/4S. ON HWY 183 JUST PAST "ANTONINO RD.", E. INTO

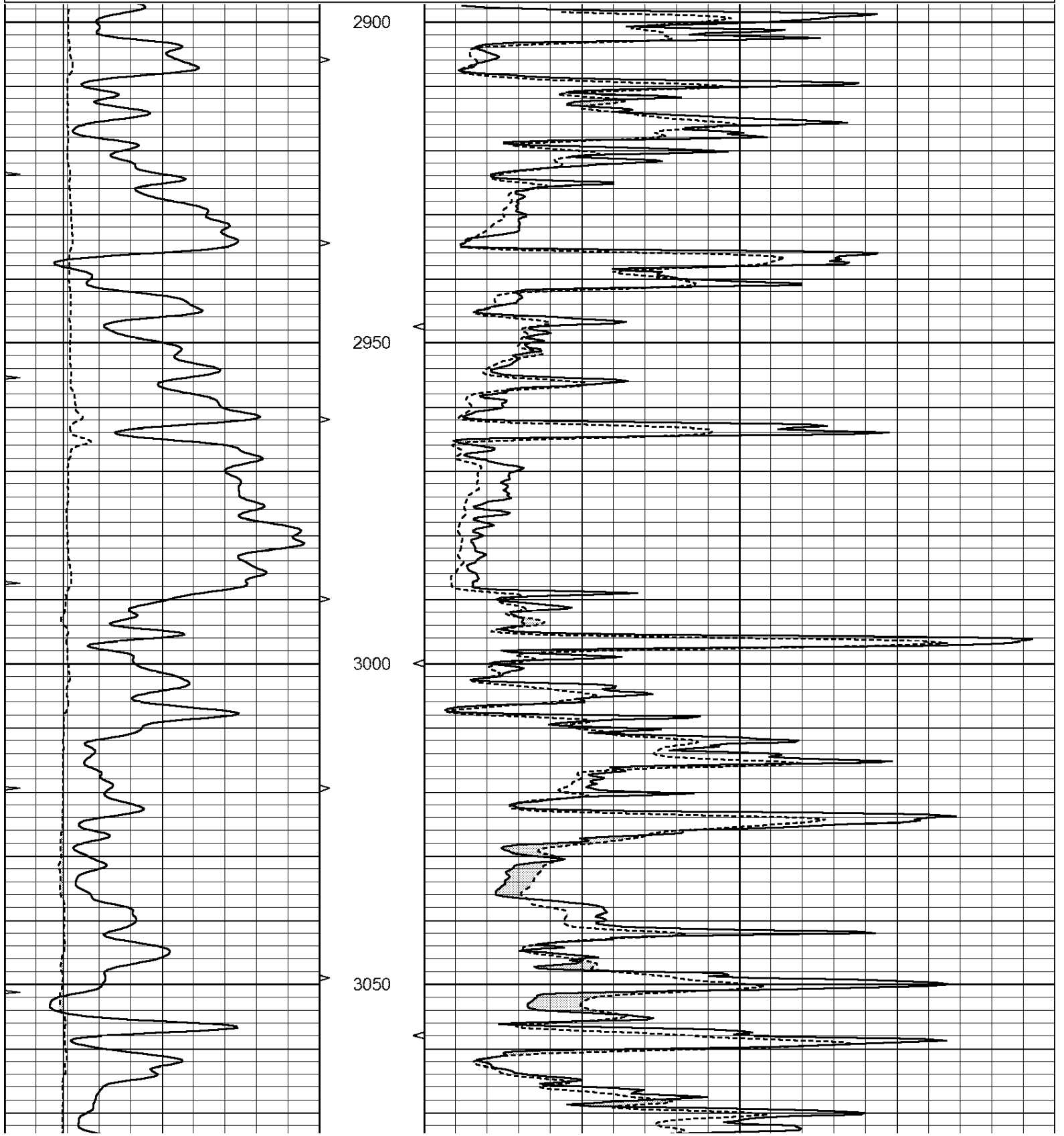


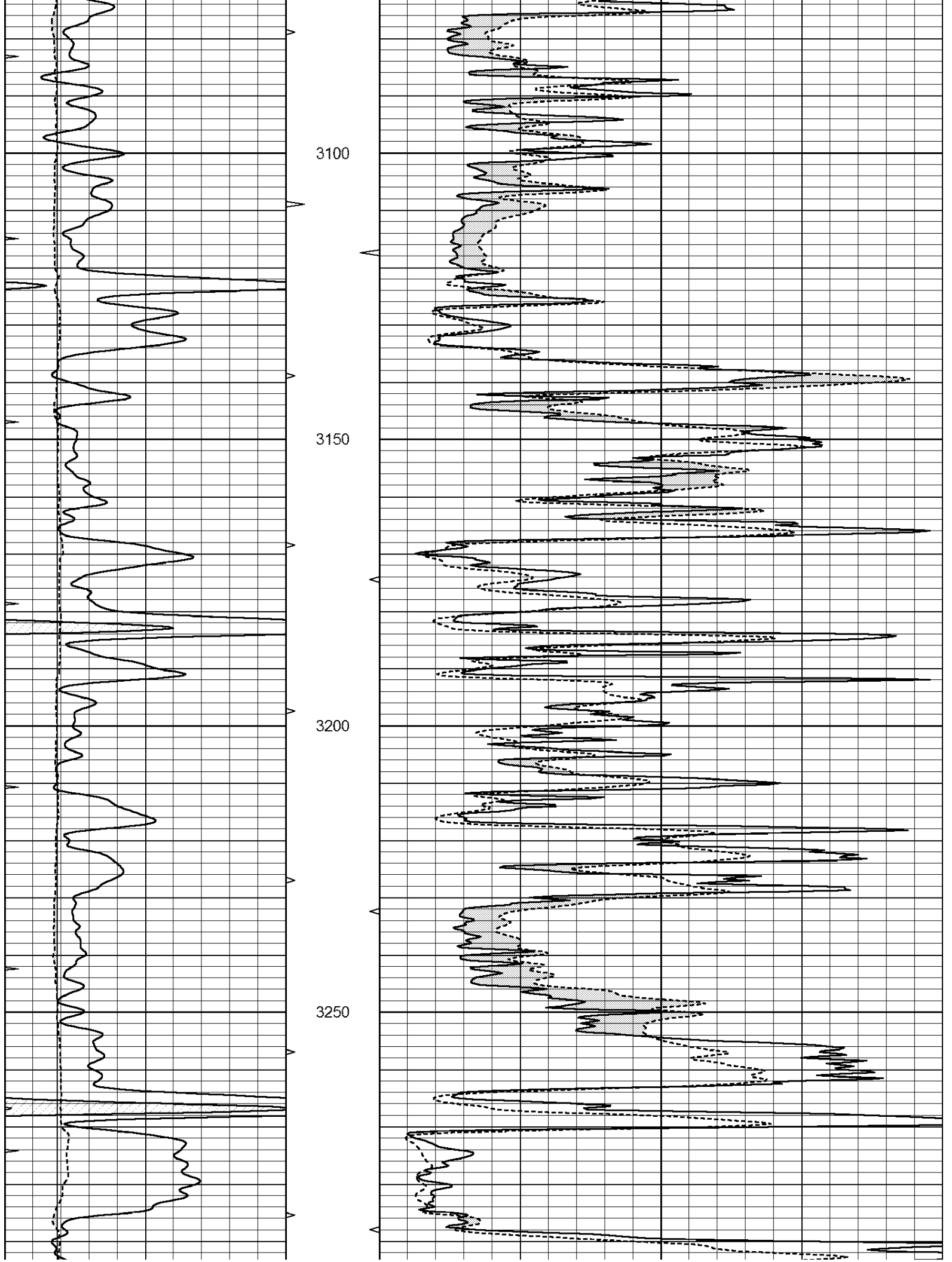
SUPERIOR
Hays,
Kansas

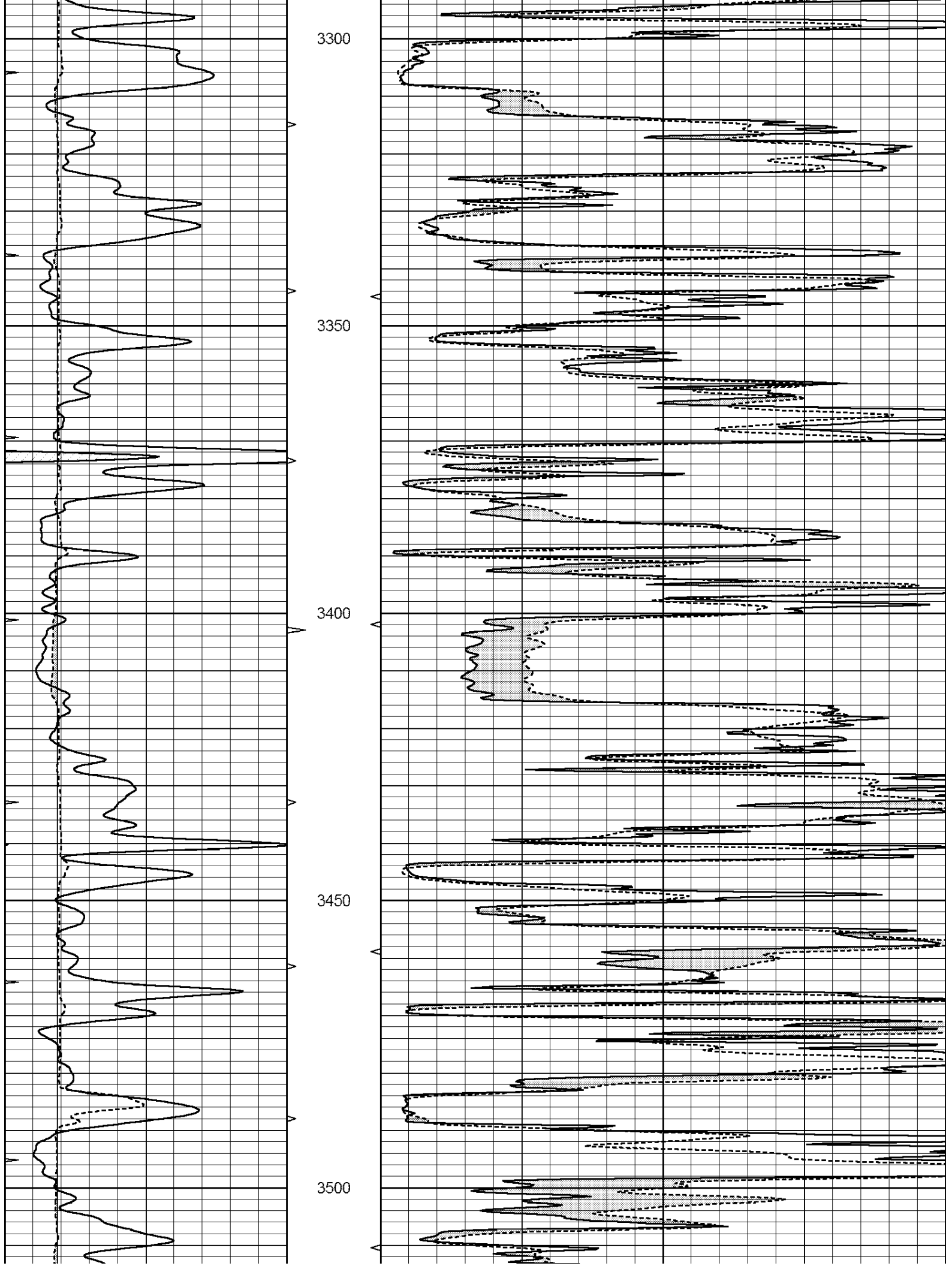
MAIN SECTION

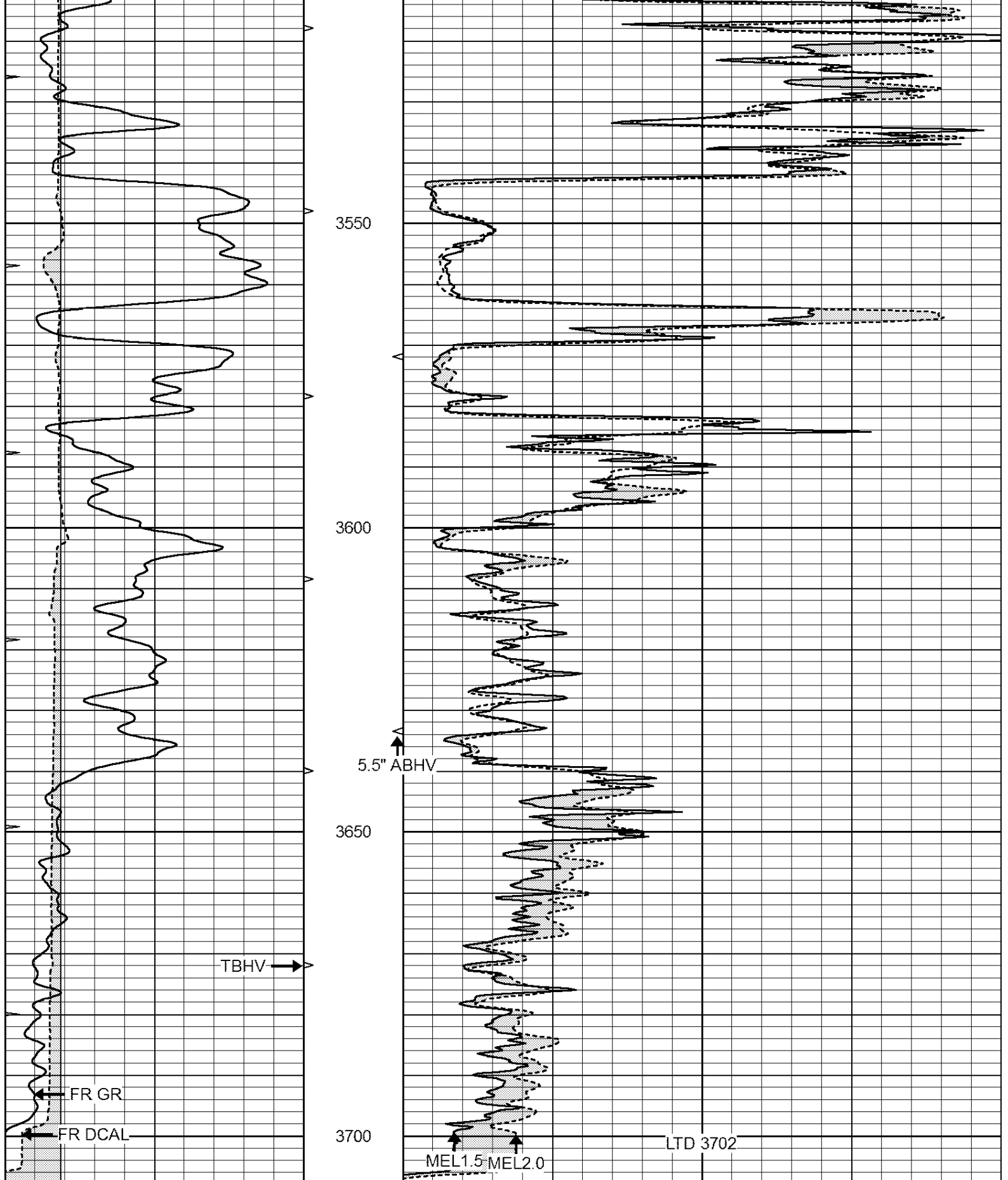
Database File: 408612ddn.db
 Dataset Pathname: pass6.5
 Presentation Format: micro
 Dataset Creation: Sat Mar 24 21:20:48 2012 by Calc Open-Cased 110302
 Charted by: Depth in Feet scaled 1:240

0	GAMMA RAY (GAPI)	150	ABHV	0	MEL1.5 (Ohm-m)	40
6	CALIPER (in)	16	10 (ft3)	0	MEL2.0 (Ohm-m)	40
0	MINMK	20	TBHV			
			0 (ft3)	10		









0	GAMMA RAY (GAPI)	150	ABHV	0	MEL1.5 (Ohm-m)	40
6	CALIPER (in)	16	10 (ft3)	0	MEL2.0 (Ohm-m)	40
0	MINMK	20	TBHV			
			0 (ft3)	10		

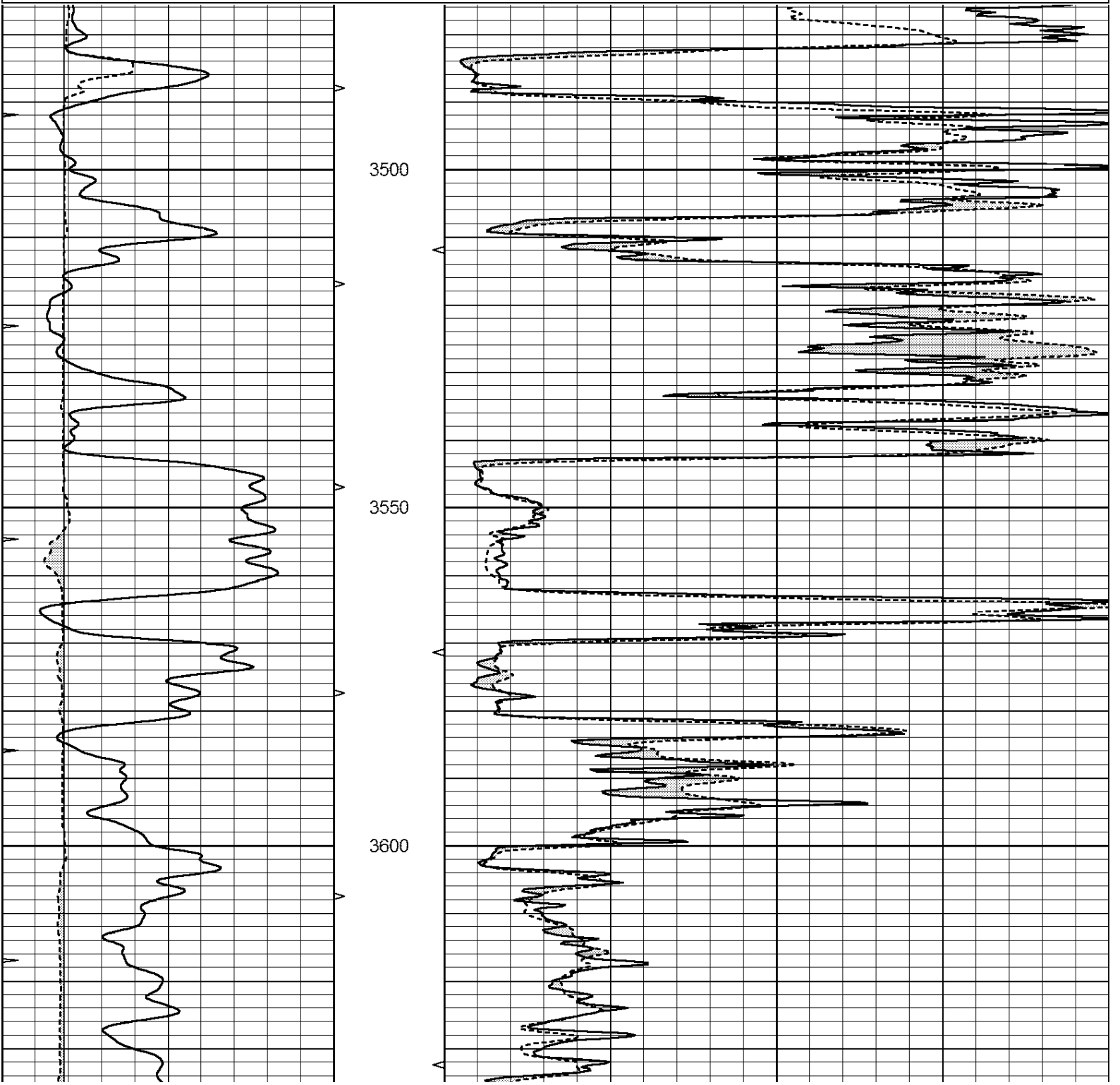


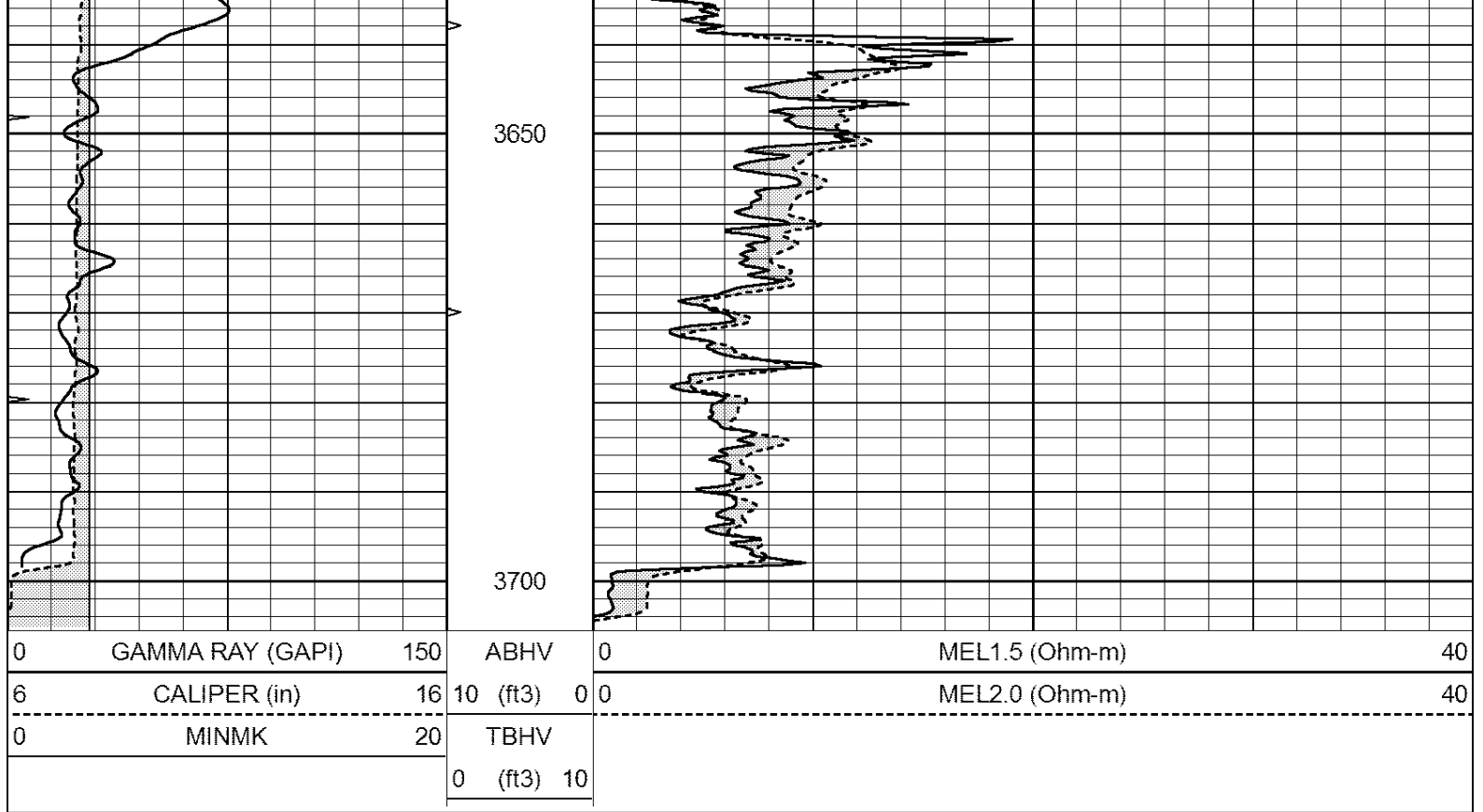
SUPERIOR
Hays,
Kansas

REPEAT SECTION

Database File: 408612ddn.db
 Dataset Pathname: pass5.6
 Presentation Format: micro
 Dataset Creation: Sat Mar 24 21:11:37 2012 by Calc Open-Cased 110302
 Charted by: Depth in Feet scaled 1:240

0	GAMMA RAY (GAPI)	150	ABHV	0	MEL1.5 (Ohm-m)	40
6	CALIPER (in)	16	10 (ft3)	0	MEL2.0 (Ohm-m)	40
0	MINMK	20	TBHV			
			0 (ft3)	10		





Calibration Report

Database File: 408612ddn.db
 Dataset Pathname: pass6.5
 Dataset Creation: Sat Mar 24 21:20:48 2012 by Calc Open-Cased 110302

MICRO Calibration Report

Serial Number: 2
 Tool Model: PROBE
 Performed: Wed Mar 14 20:31:07 2012

Caliper Calibration: Gain=4.223 Offset=3.027

	Low Cal	High Cal
References	7.800	15.000
Readings	1.130	2.835

1.5" Calibration: Gain=30.000 Offset=-0.500

	Low Cal	High Cal
References	0.000	20.000
Readings	0.065	1.210

2" Calibration: Gain=55.000 Offset=-0.800

	Low Cal	High Cal
References	0.000	20.000
Readings	0.012	1.043

Gamma Ray Calibration Report

Serial Number: GR4
 Tool Model: OPEN
 Performed: Sat Mar 24 20:46:02 2012

Calibrator Value: 200.0 GAPI

Background Reading: 0.0 cps
 Calibrator Reading: 189.0 cps

Calibrator Reading:

100.0

cps

Sensitivity:

1.3500

GAPI/cps