



# Microresistivity Log

**DIGITAL LOG** (785) 625-3858

API No.	15-185-23,739-00-00		
Company	L.D. Drilling, Inc.		
Well	VMD No. 1-3		
Field	Wildcat		
County	Stafford	State	Kansas
Location	S2 SE NE SW 1,500' FSL & 2,310' FWL		
Sec: 3	Twp: 22S	Rge: 14W	
Permanent Datum	Ground Level	Elevation 1937	Other Services CNL/CDL DIL
Log Measured From	Kelly Bushing	5 Ft. Above Perm. Datum	
Drilling Measured From	Kelly Bushing		Elevation K.B. 1942 D.F. 1937 G.L. 1937

Date	3/15/2012	
Run Number	Two	
Depth Driller	3900	
Depth Logger	3901	
Bottom Logged Interval	3900	
Top Log Interval	3100	
Casing Driller	8.625 @ 878	
Casing Logger	872	
Bit Size	7.875	
Type Fluid in Hole	Chemical	
Salinity, ppm CL	4000	
Density / Viscosity	9.3	58
pH / Fluid Loss	8.5	10.4
Source of Sample	Flowline	
Rm @ Meas. Temp	.32 @ 72	
Rmf @ Meas. Temp	.24 @ 72	
Rmc @ Meas. Temp	.43 @ 72	
Source of Rmf / Rmc	Charts	
Rm @ BHT	.20 @ 115	
Operating Rig Time	4 Hours	
Max Rec. Temp. F	115	
Equipment Number	10	
Location	Hays	
Recorded By	J. Long	
Witnessed By	Josh Austin	

<<< Fold Here >>>

All interpretations are opinions based on inferences from electrical or other measurements and we cannot and do not guarantee the accuracy or correctness of any interpretation, and we shall not, except in the case of gross or willful negligence on our part, be liable or responsible for any loss, costs, damages, or expenses incurred or sustained by anyone resulting from any interpretation made by any of our officers, agents or employees. These interpretations are also subject to our general terms and conditions set out in our current Price Schedule.

### Comments

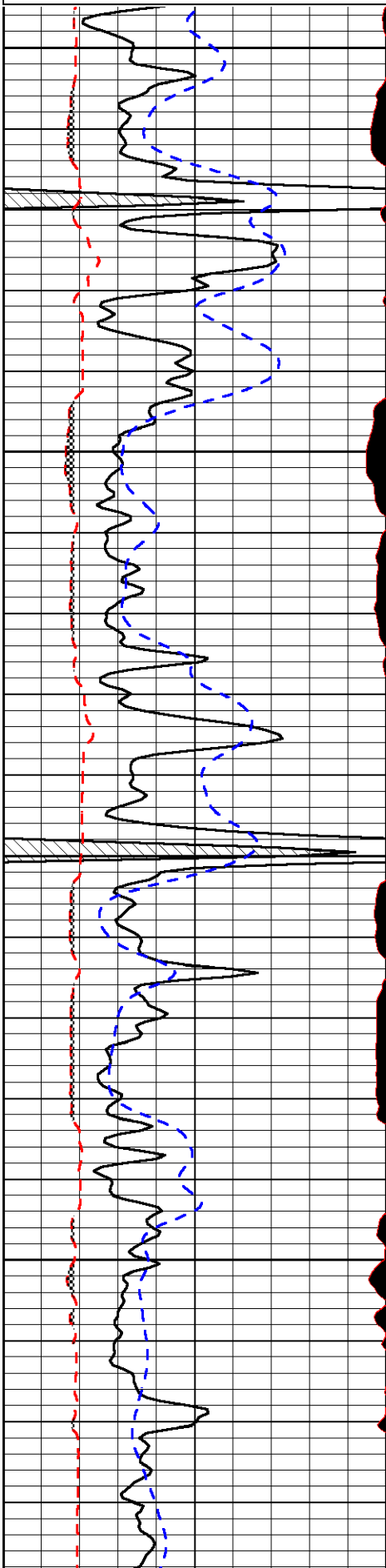
Thank you for using Log-Tech, Inc.  
(785) 625-3858

Great Bend, South to Highway 19, 5 1/2 West, North Into

Database File: Id\_vmd\_1-3hd.db  
 Dataset Pathname: dil/ldstck  
 Presentation Format: micro  
 Dataset Creation: Thu Mar 15 09:43:47 2012  
 Charted by: Depth in Feet scaled 1:240

0	Gamma Ray	150
6	MCAL (GAPI)	16
2.875	Mud Cake (GAPI)	7.875
-200	SP	0

0	Micro Inverse 1 X 1	40
0	Micro Normal 2"	40
10000	Line Weight	0
		LSPD

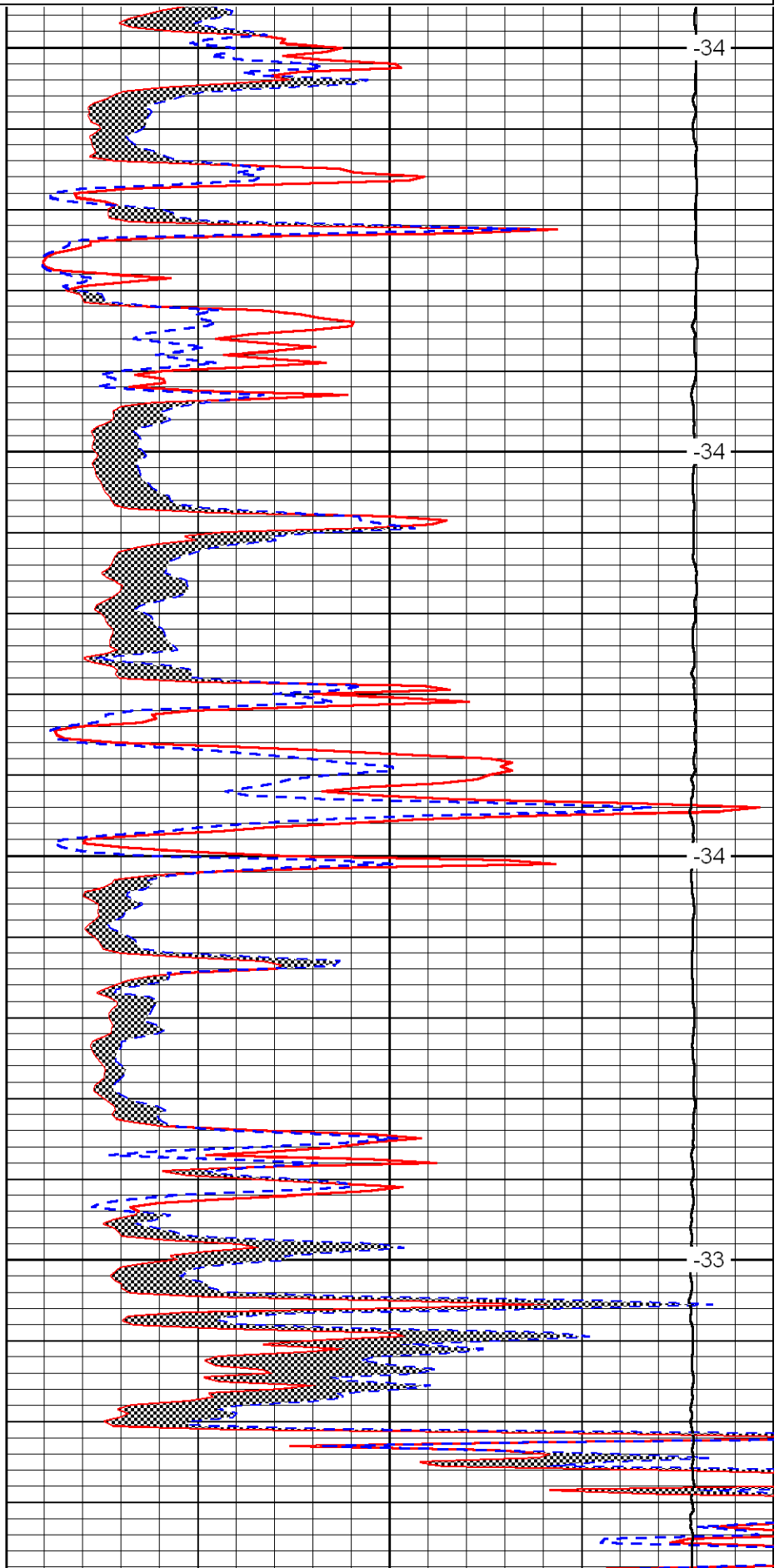


3100

3150

3200

3250

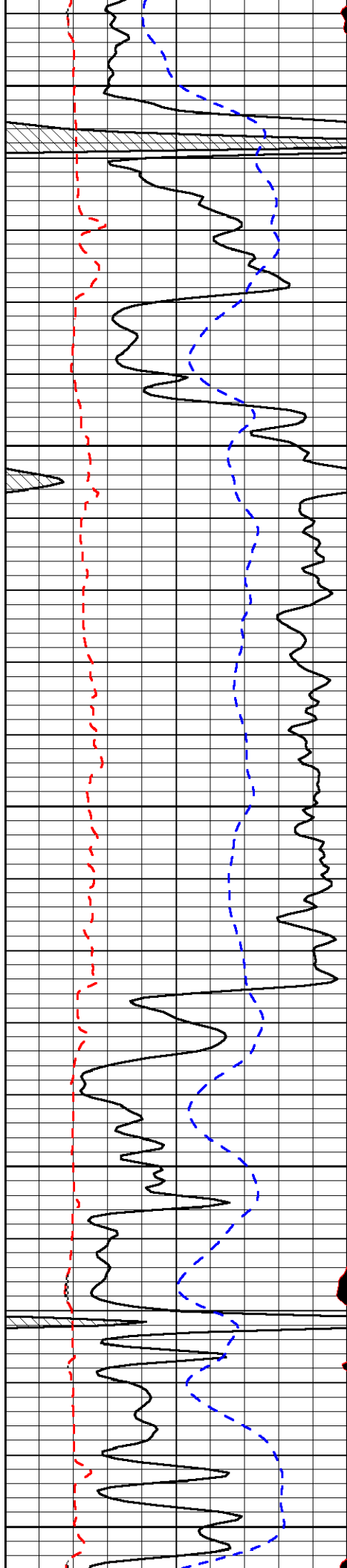


-34

-34

-34

-33



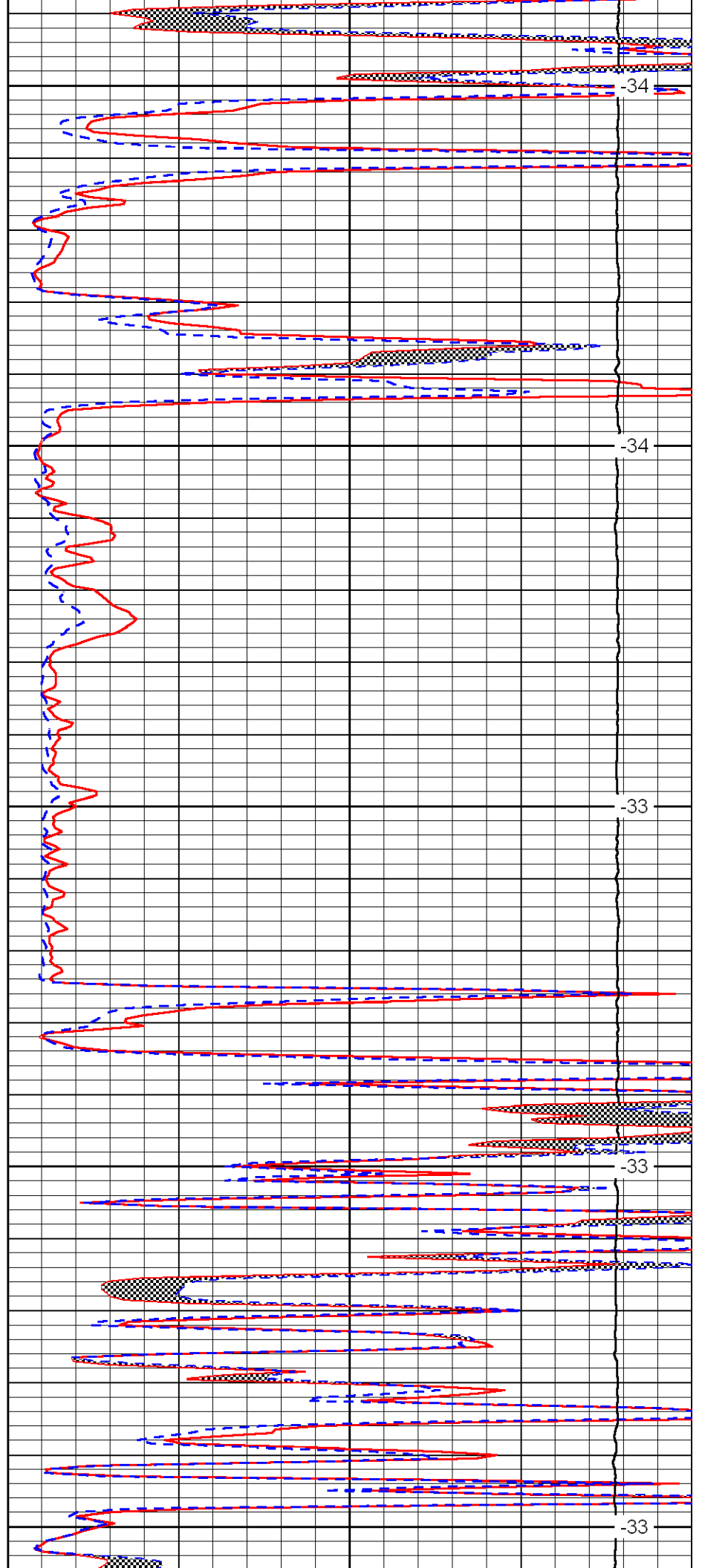
3300

3350

3400

3450

3500



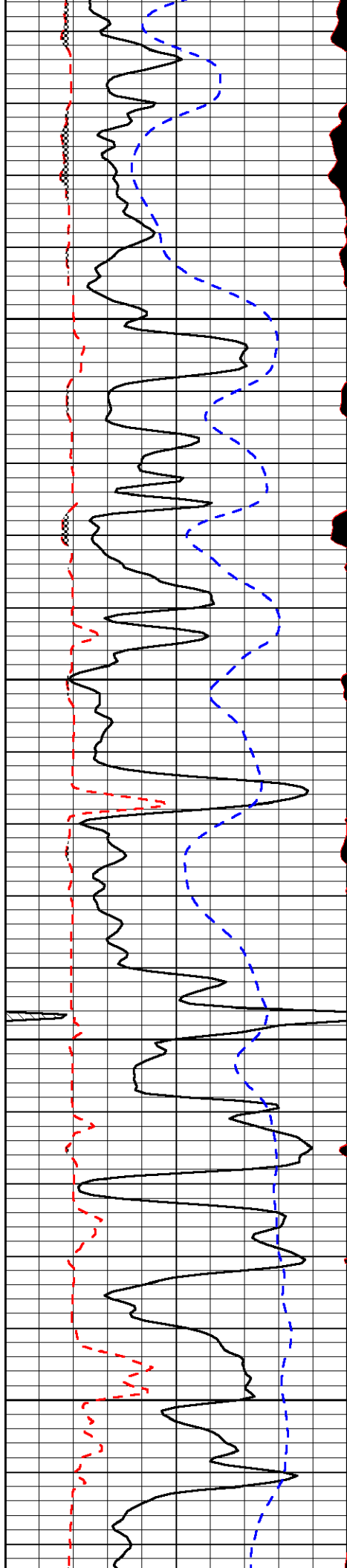
34

34

33

33

33

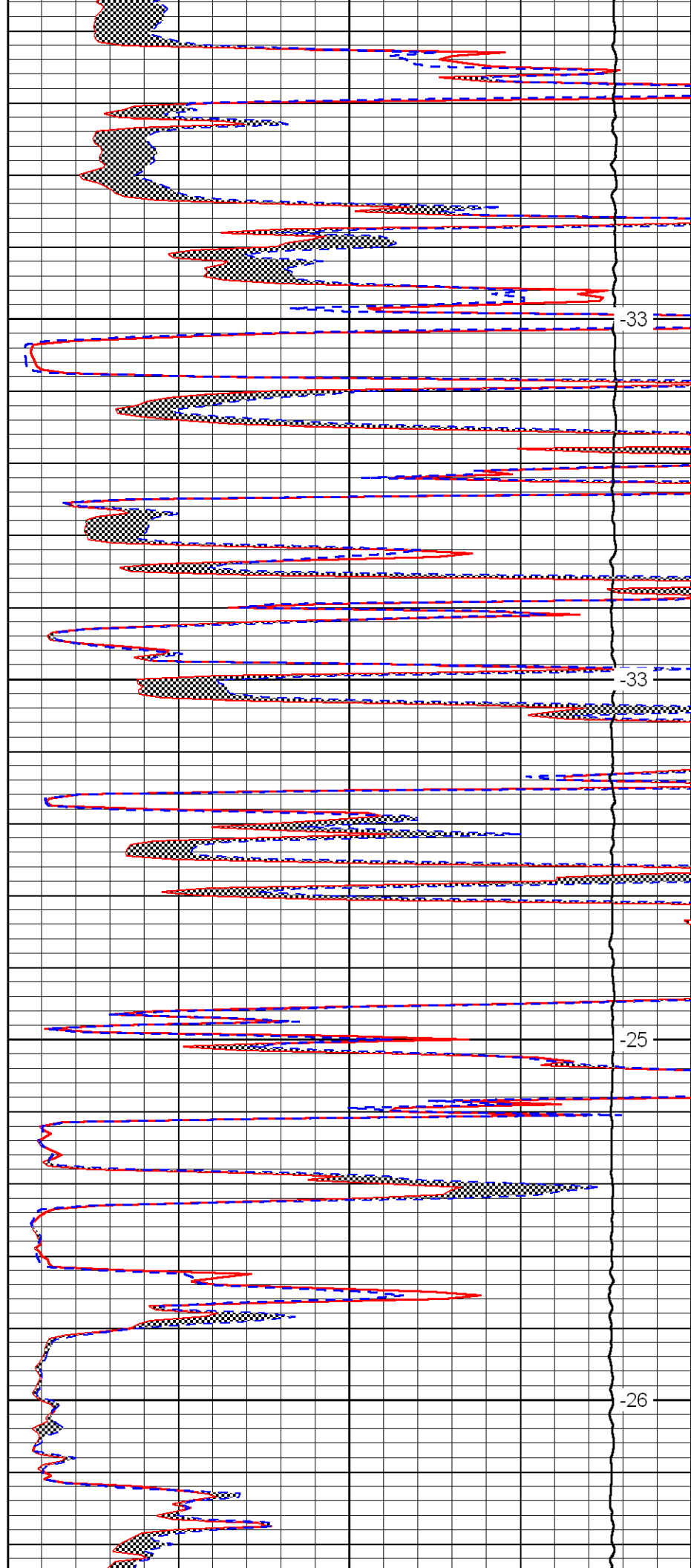


3550

3600

3650

3700

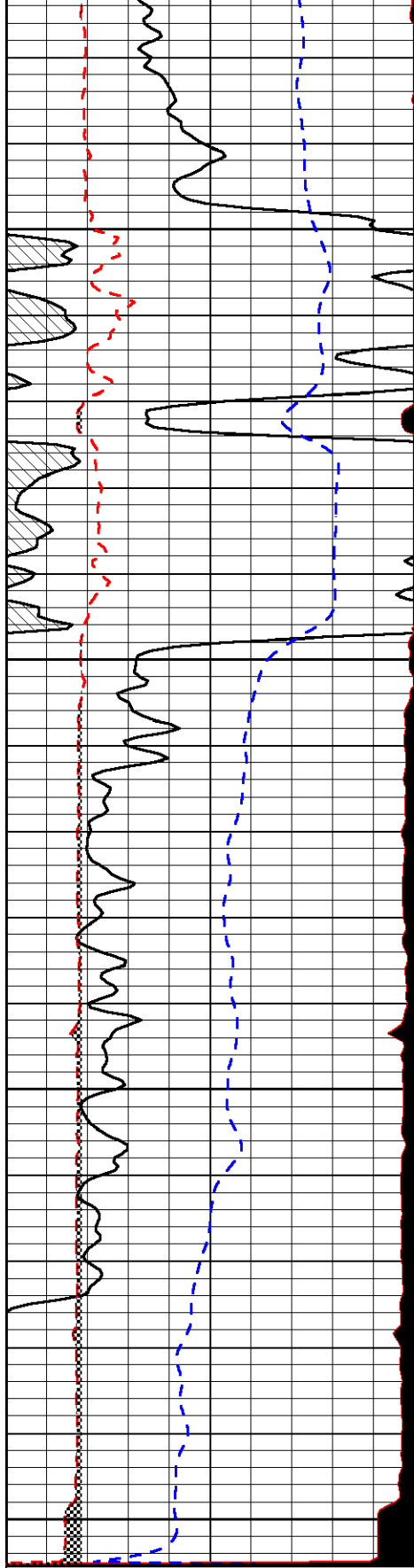


-33

-33

-25

-26



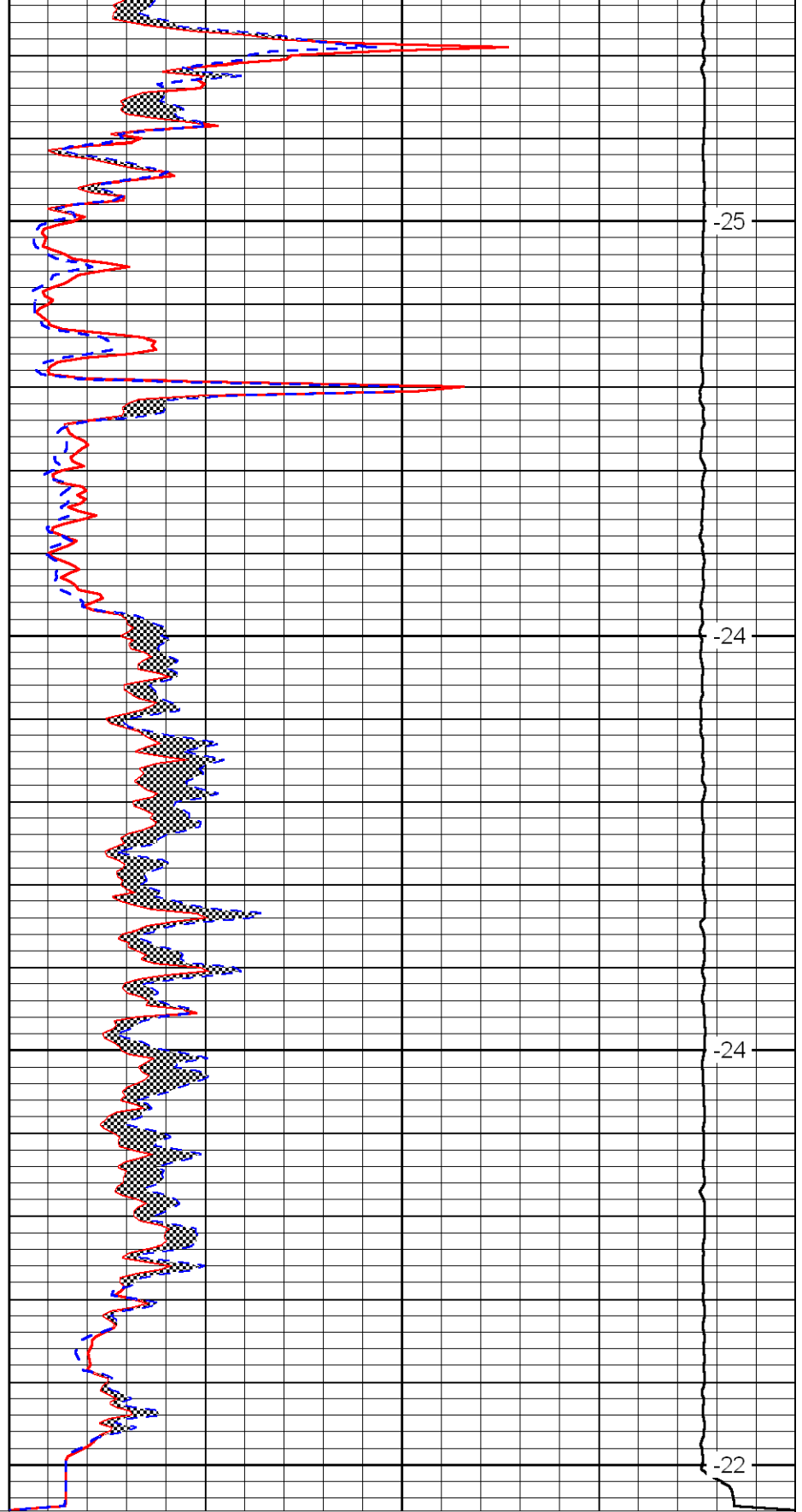
0	Gamma Ray	150
6	MCAL (GAPI)	16
2.875	Mud Cake (GAPI)	7.875
-200	SP	0

3750

3800

3850

3900



0	Micro Inverse 1 X 1	40
0	Micro Normal 2''	40
10000	Line Weight	0

-25

-24

-24

-22

LSPD