



Dual Compensated Porosity Log

DIGITAL LOG (785) 625-3858

API No. 15-185-23,739-00-00

Company L.D. Drilling, Inc.
Well VMD No. 1-3
Field Wildcat
County Stafford
State Kansas

Location S2 SE NE SW
1,500' FSL & 2,310' FWL
Sec: 3 Twp: 22S Rge: 14W

Other Services
DIL/MEL

Elevation 1937
K.B. 1942
D.F. G.L. 1937

Permanent Datum Ground Level
Log Measured From Kelly Bushing
Drilling Measured From Kelly Bushing

Elevation 1937
5 Ft. Above Perm. Datum

Date 3/15/2012

Run Number One
Type Log CNL / CDL
Depth Driller 3900
Depth Logger 3901
Bottom Logged Interval 3880
Top Logged Interval 3100
Type Fluid In Hole Chemical
Salinity, PPM CL 4000
Density 9.3
Level Full
Max. Rec. Temp. F 115
Operating Rig Time 4 Hours
Equipment -- Location 10 Hays
Recorded By J. Long
Witnessed By Josh Austin

Borehole Record				Casing Record			
Run No	Bit	From	To	Size	Wgt. 23#	From	To
One	12.25	00	878	8.625		00	878
Two	7.875	878	TD				

<<< Fold Here >>>

All interpretations are opinions based on inferences from electrical or other measurements and we cannot and do not guarantee the accuracy or correctness of any interpretation, and we shall not, except in the case of gross or willful negligence on our part, be liable or responsible for any loss, costs, damages, or expenses incurred or sustained by anyone resulting from any interpretation made by any of our officers, agents or employees. These interpretations are also subject to our general terms and conditions set out in our current Price Schedule.

Comments

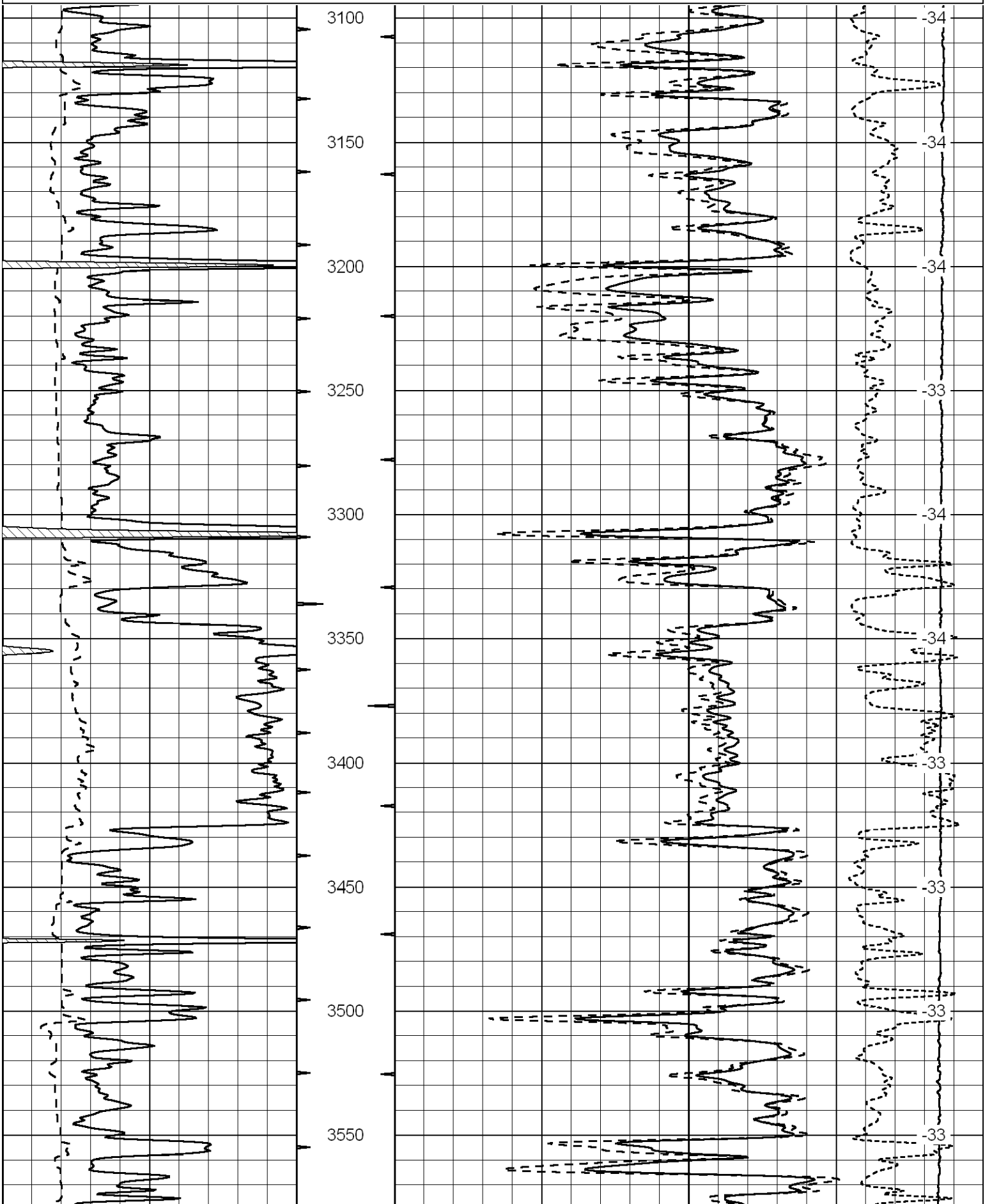
Thank you for using Log-Tech, Inc.
(785) 625-3858

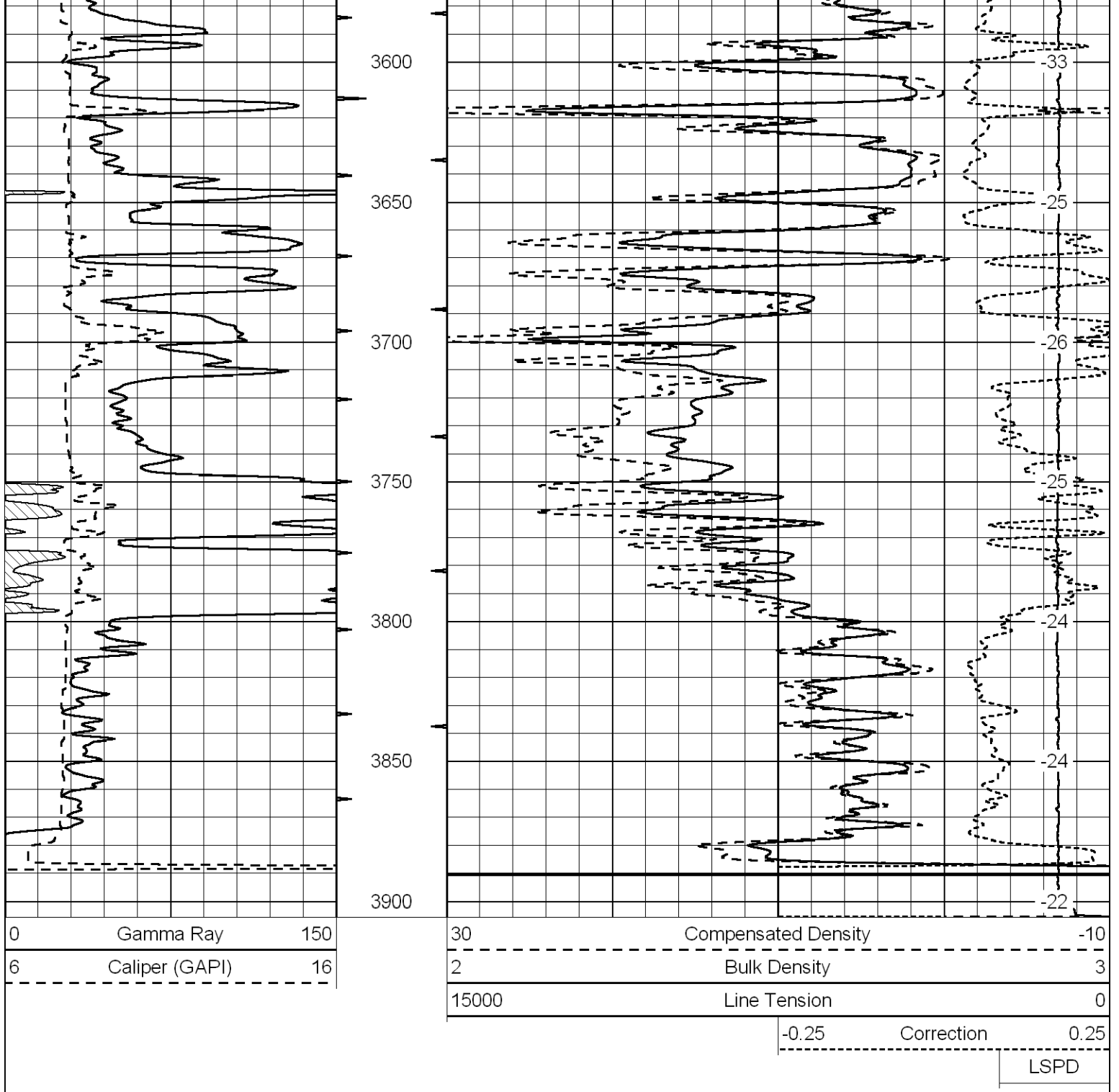
Great Bend, South to Highway 19, 5 1/2 West, North Into

Database File: ld_vmd_1-3hd.db
Dataset Pathname: dil/ldstck
Presentation Format: cdl
Dataset Creation: Thu Mar 15 09:43:47 2012
Charted by: Depth in Feet scaled 1:600

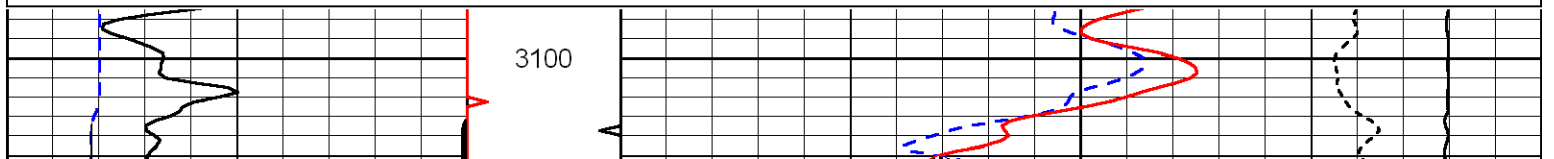
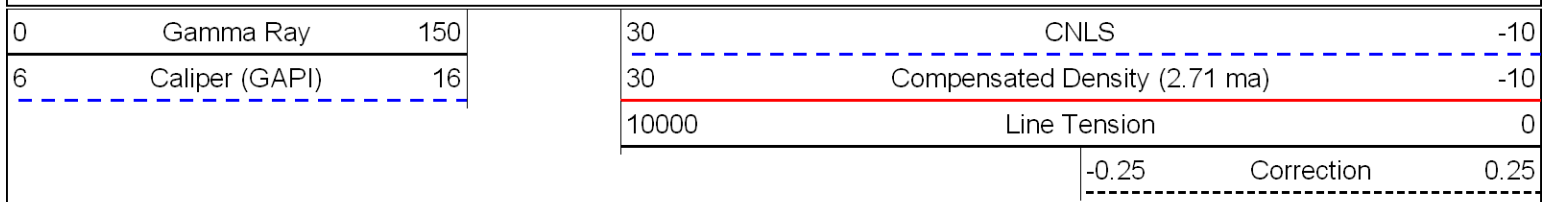
0	Gamma Ray	150
6	Caliper (GAPI)	16

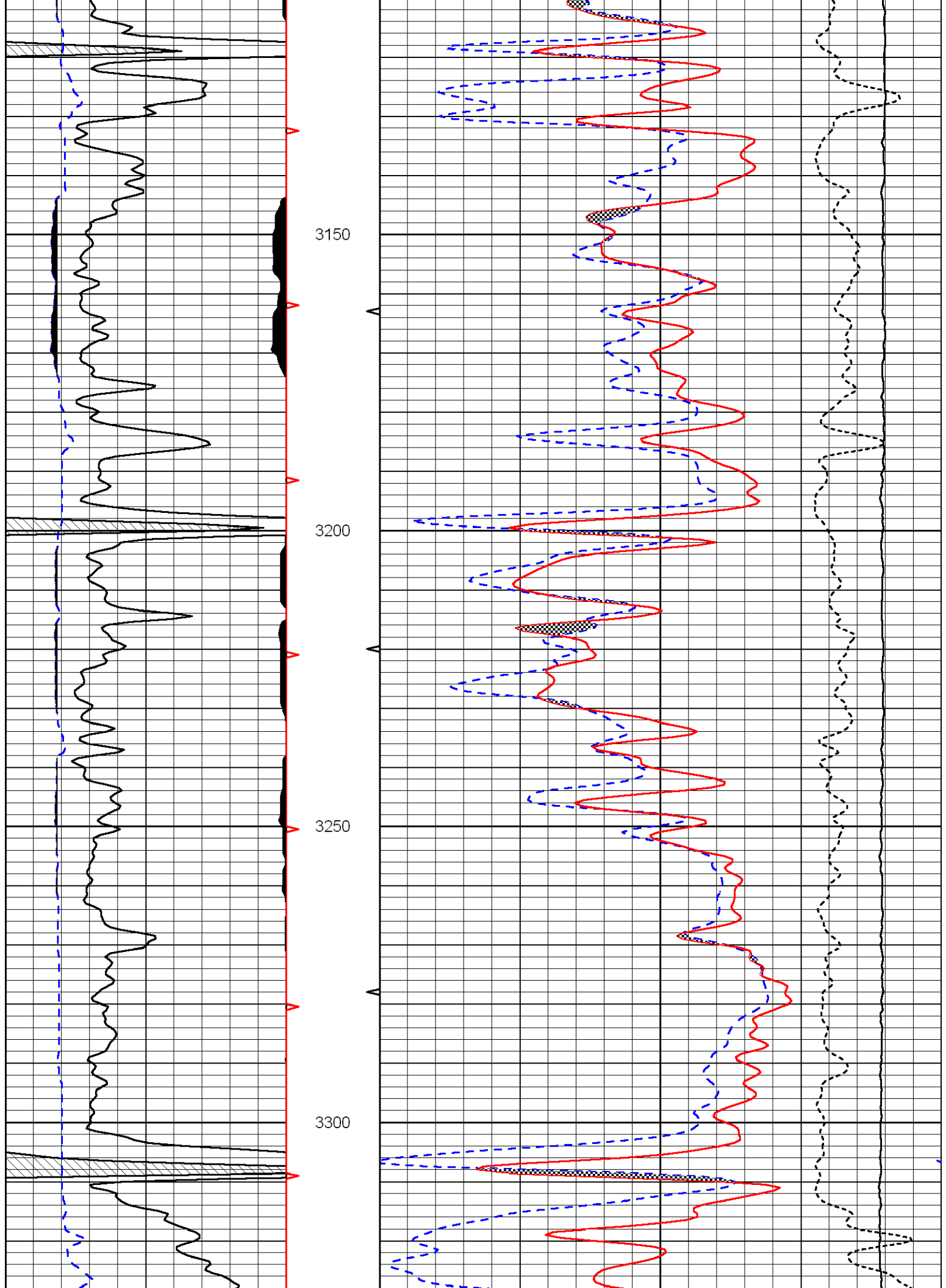
30	Compensated Density	-10
2	Bulk Density	3
15000	Line Tension	0
	-0.25	0.25
	Correction	
		LSPD

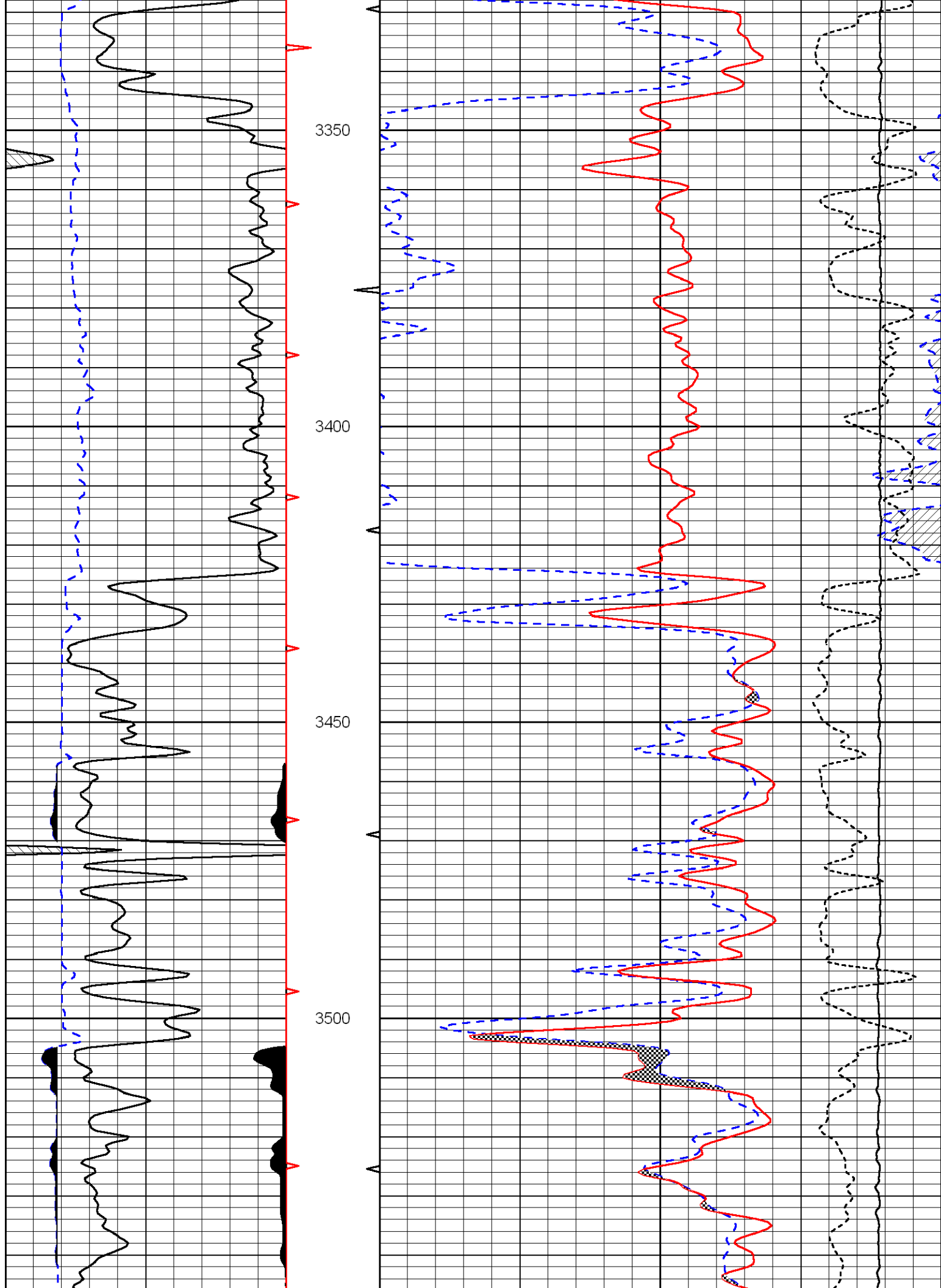


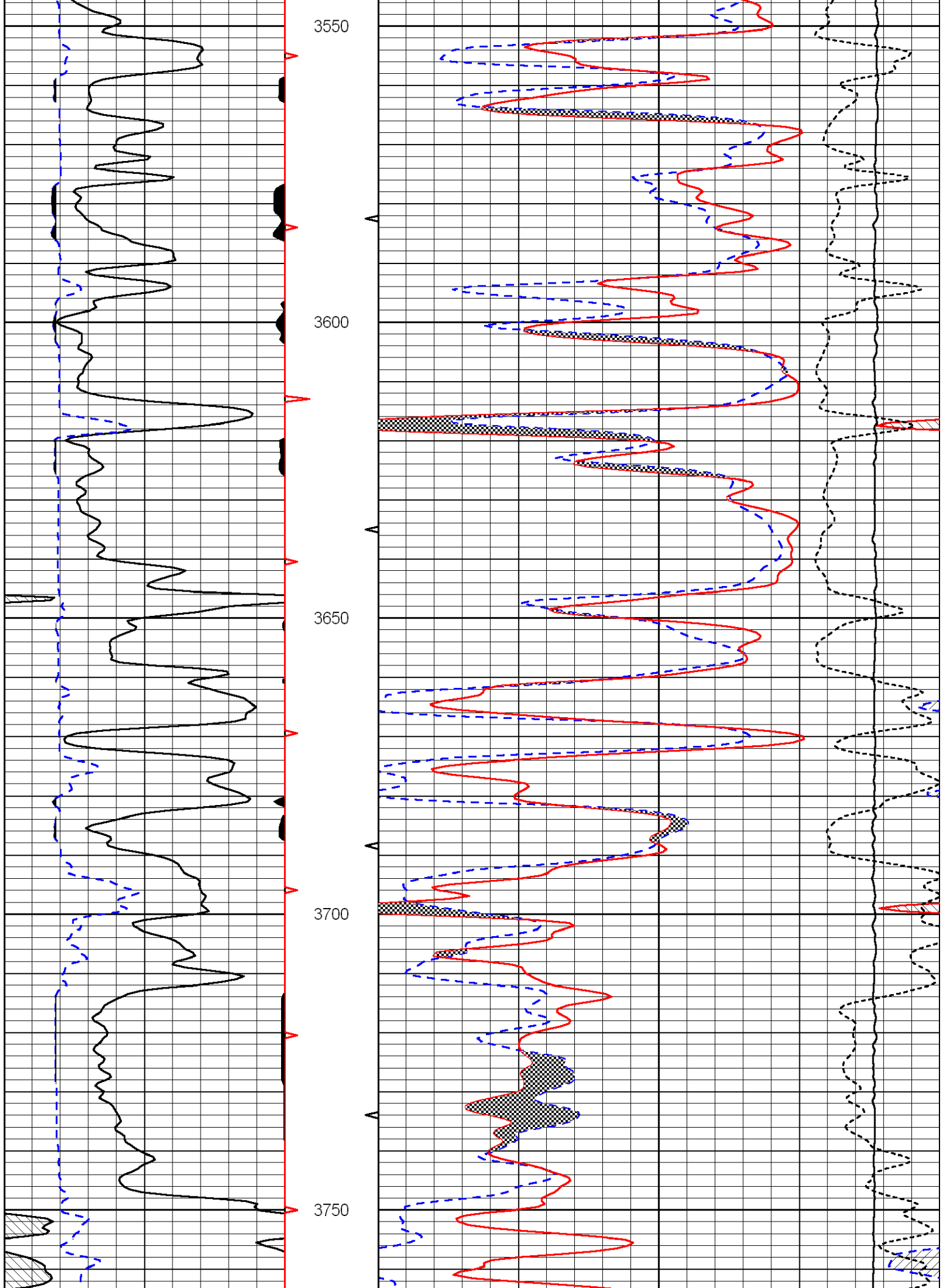


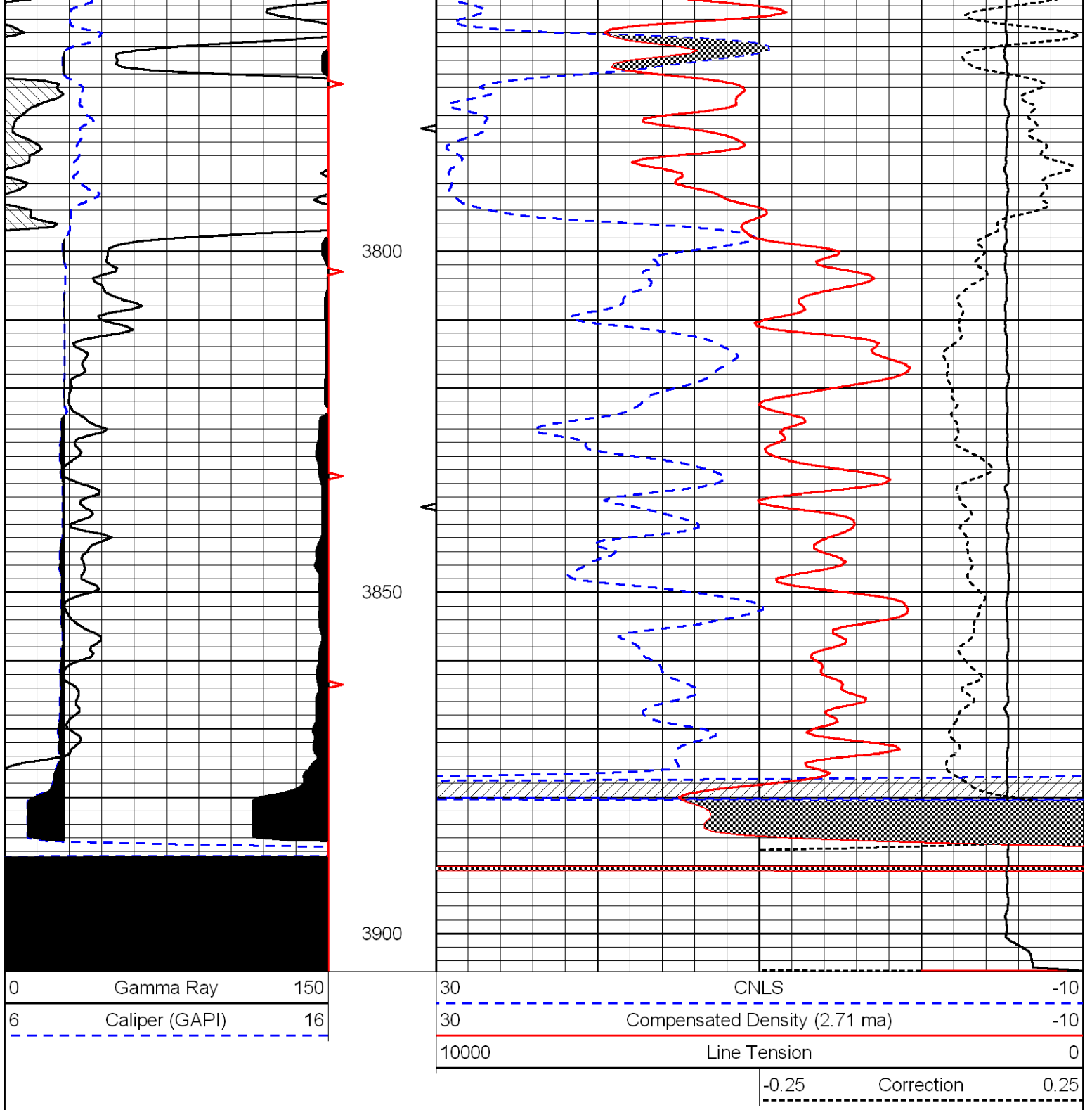
Database File: Id_vmd_1-3hd.db
 Dataset Pathname: dil/ldstck
 Presentation Format: cndlspec
 Dataset Creation: Thu Mar 15 09:43:47 2012
 Charted by: Depth in Feet scaled 1:240







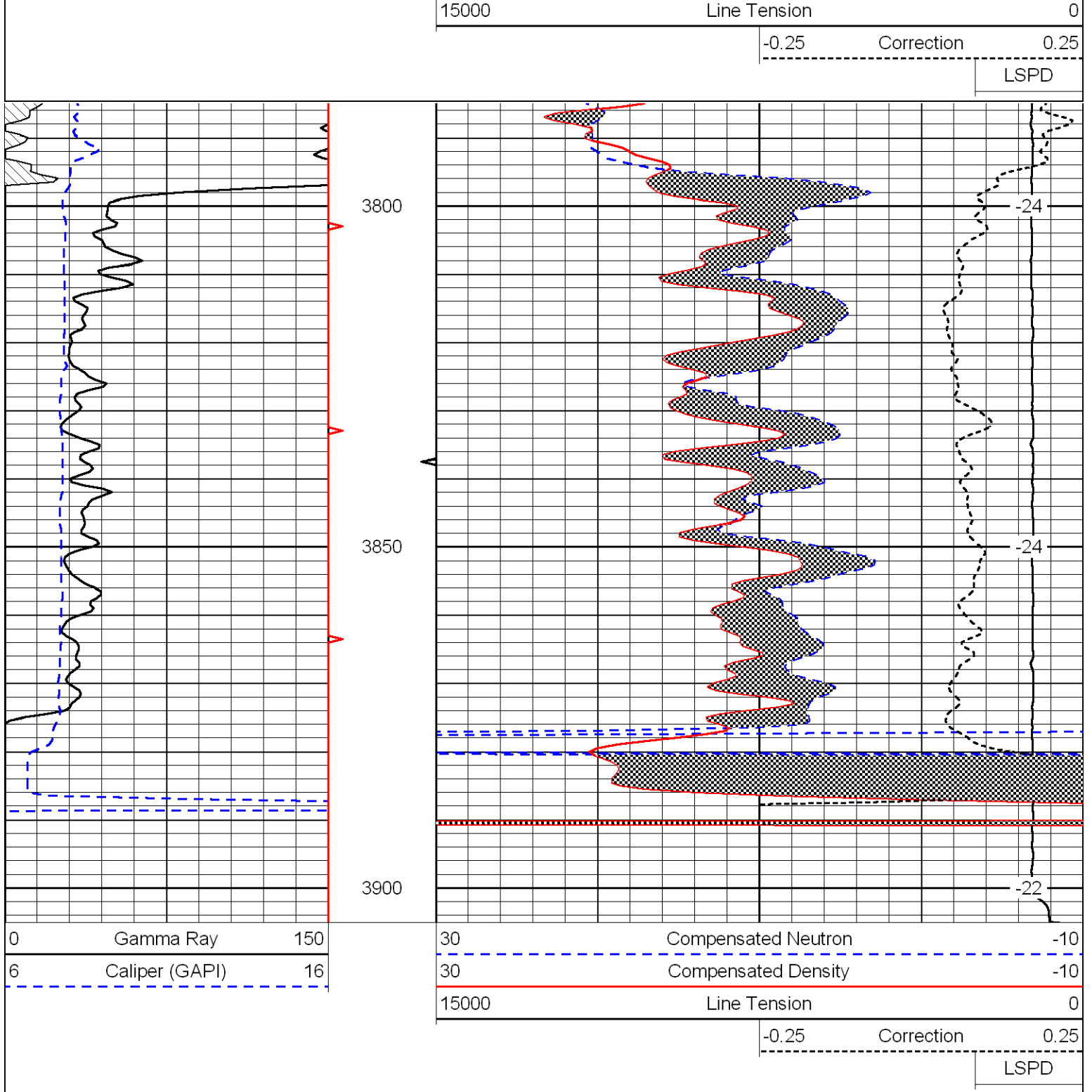




Dolomite Matrix (2.83)

Database File: Id_vmd_1-3hd.db
 Dataset Pathname: dil/Id283
 Presentation Format: cndldolo
 Dataset Creation: Thu Mar 15 09:43:52 2012
 Charted by: Depth in Feet scaled 1:240

0	Gamma Ray	150	30	Compensated Neutron	-10
6	Caliper (GAPI)	16	30	Compensated Density	-10



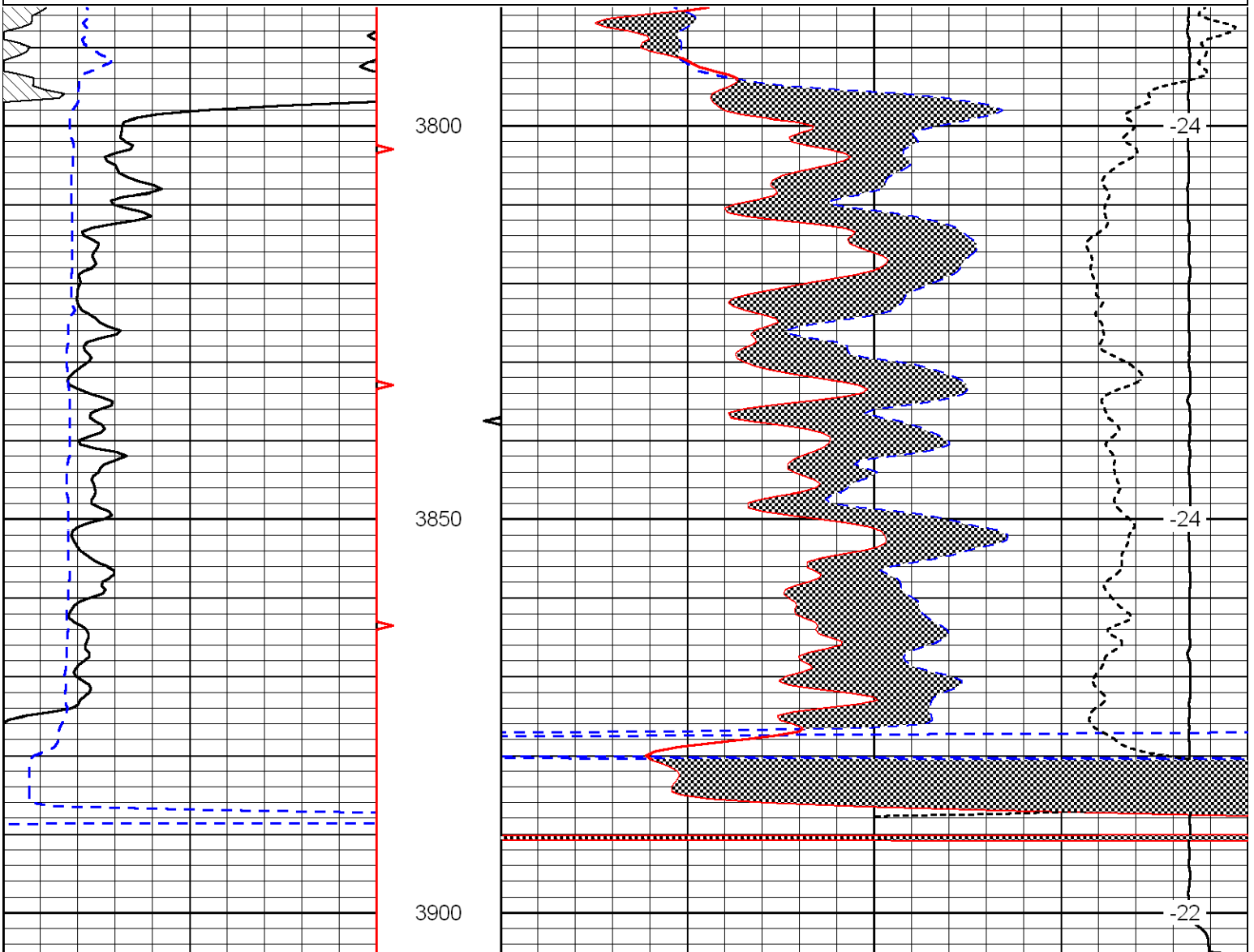
Dolomite Matrix (2.87)

Database File: Id_vmd_1-3hd.db
 Dataset Pathname: dil/Id287
 Presentation Format: cndldolo
 Dataset Creation: Thu Mar 15 09:43:52 2012
 Charted by: Depth in Feet scaled 1:240

0	Gamma Ray	150
6	Caliper (GAPI)	16

30	Compensated Neutron	-10
30	Compensated Density	-10
15000	Line Tension	0

-0.25 Correction 0.25
LSPD



0	Gamma Ray	150
6	Caliper (GAPI)	16

30	Compensated Neutron	-10
30	Compensated Density	-10
15000	Line Tension	0

-0.25 Correction 0.25
LSPD