



# Dual Induction Log

DIGITAL LOG (785) 625-3858

API No.	15-185-23,739-00-00	
Company	L.D. Drilling, Inc.	
Well	VMD No. 1-3	
Field	Wildcat	
County	Stafford	State Kansas
Location	S2 SE NE SW 1,500' FSL & 2,310' FWL	
Sec: 3	Twp: 22S	Rge: 14W
Permanent Datum	Ground Level	Elevation 1937
Log Measured From	Kelly Bushing	5 Ft. Above Perm. Datum
Drilling Measured From	Kelly Bushing	K.B. 1942 D.F. 1937 G.L. 1937
		Other Services CNL/CDL MEL

Date	3/15/2012
Run Number	One
Depth Driller	3900
Depth Logger	3901
Bottom Logged Interval	3900
Top Log Interval	850
Casing Driller	8.625 @ 878
Casing Logger	872
Bit Size	7.875
Type Fluid in Hole	Chemical
Salinity, ppm CL	4000
Density / Viscosity	9.3 58
pH / Fluid Loss	8.5 10.4
Source of Sample	Flowline
Rm @ Meas. Temp	.32 @ 72
Rmf @ Meas. Temp	.24 @ 72
Rmc @ Meas. Temp	.43 @ 72
Source of Rmf / Rmc	Charts
Rm @ BHT	.20 @ 115
Operating Rig Time	4 Hours
Max Rec. Temp. F	115
Equipment Number	10
Location	Hays
Recorded By	J. Long
Witnessed By	Josh Austin

<<< Fold Here >>>

All interpretations are opinions based on inferences from electrical or other measurements and we cannot and do not guarantee the accuracy or correctness of any interpretation, and we shall not, except in the case of gross or willful negligence on our part, be liable or responsible for any loss, costs, damages, or expenses incurred or sustained by anyone resulting from any interpretation made by any of our officers, agents or employees. These interpretations are also subject to our general terms and conditions set out in our current Price Schedule.

### Comments

Thank you for using Log-Tech, Inc.  
(785) 625-3858

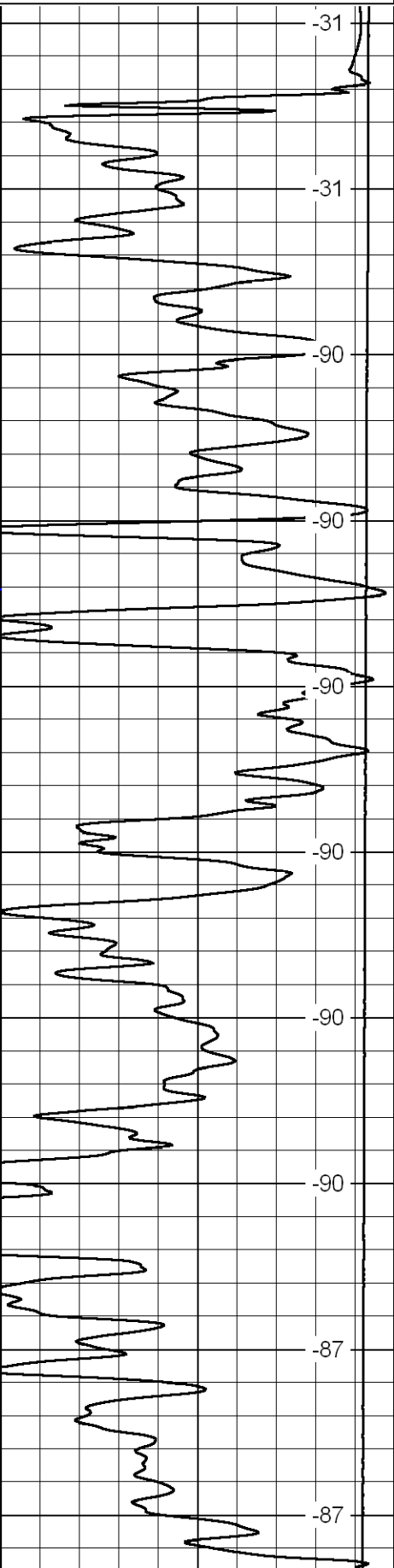
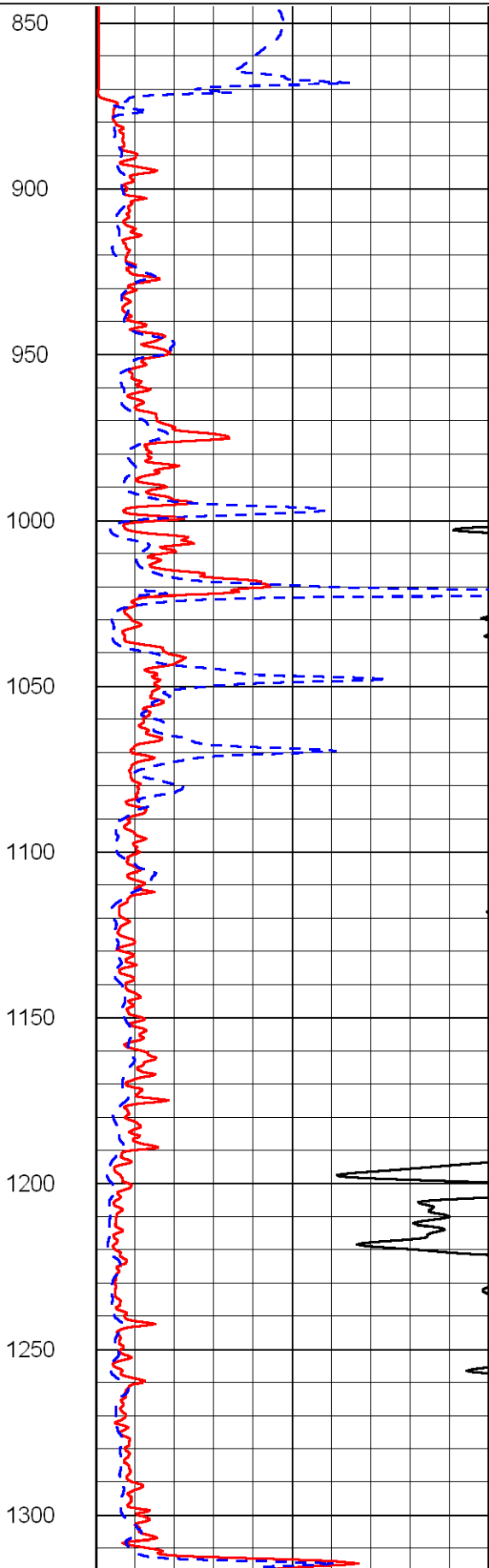
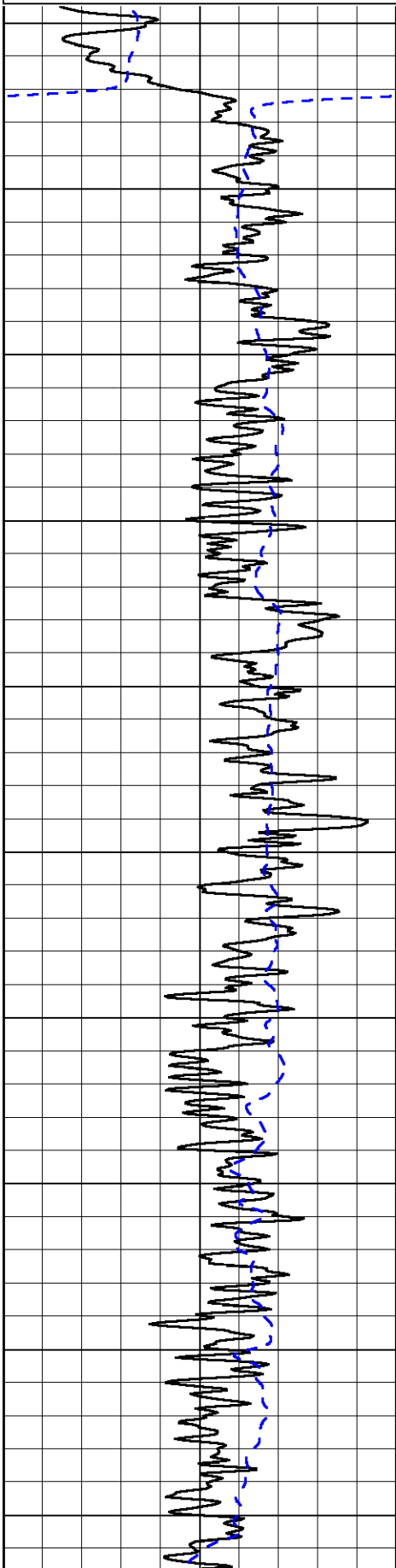
Great Bend, South to Highway 19, 5 1/2 West, North Into

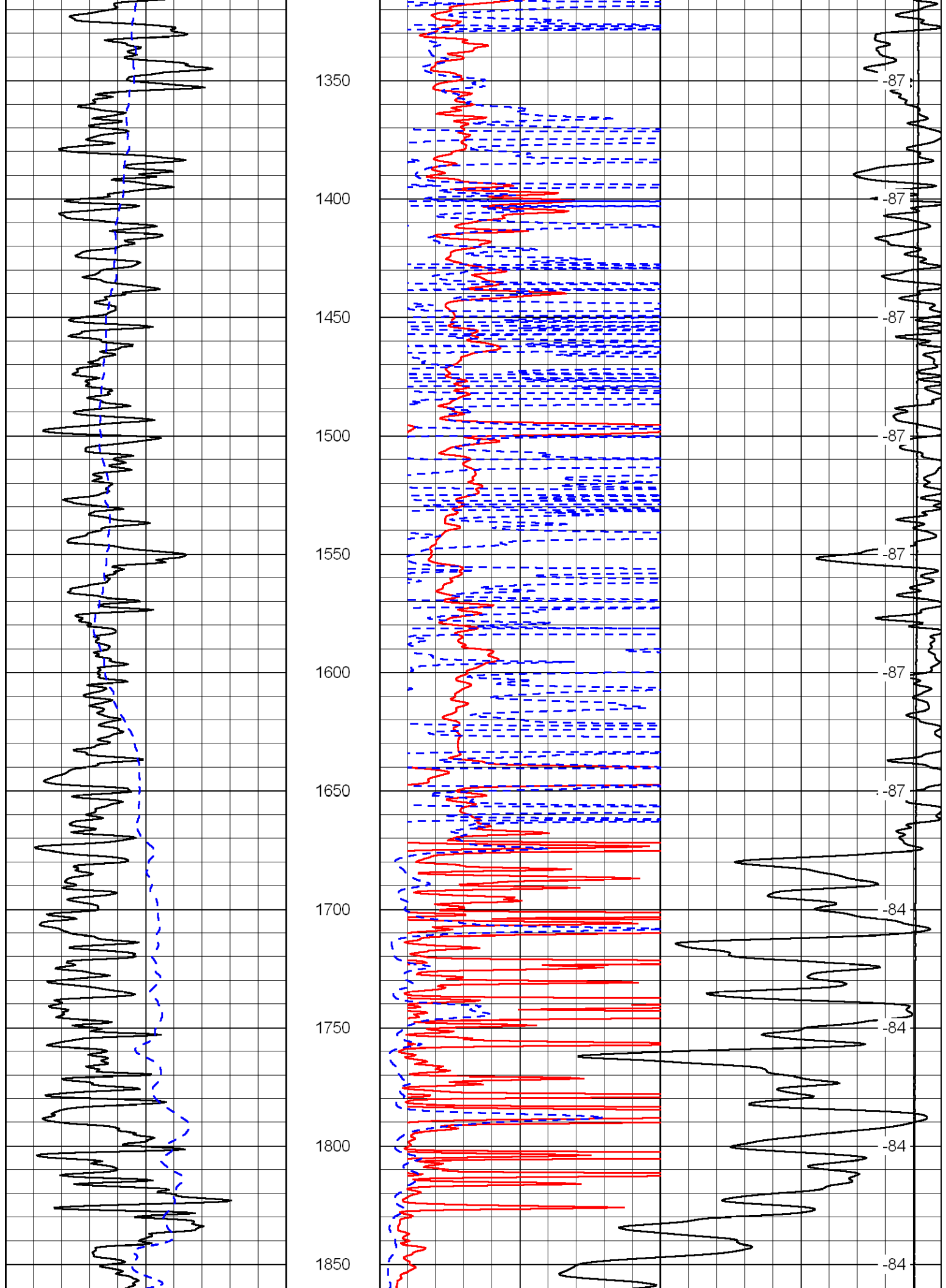
Database File: Id\_vmd\_1-3hd.db  
 Dataset Pathname: dil/ldstck  
 Presentation Format: dil2in  
 Dataset Creation: Thu Mar 15 09:43:47 2012  
 Charted by: Depth in Feet scaled 1:600

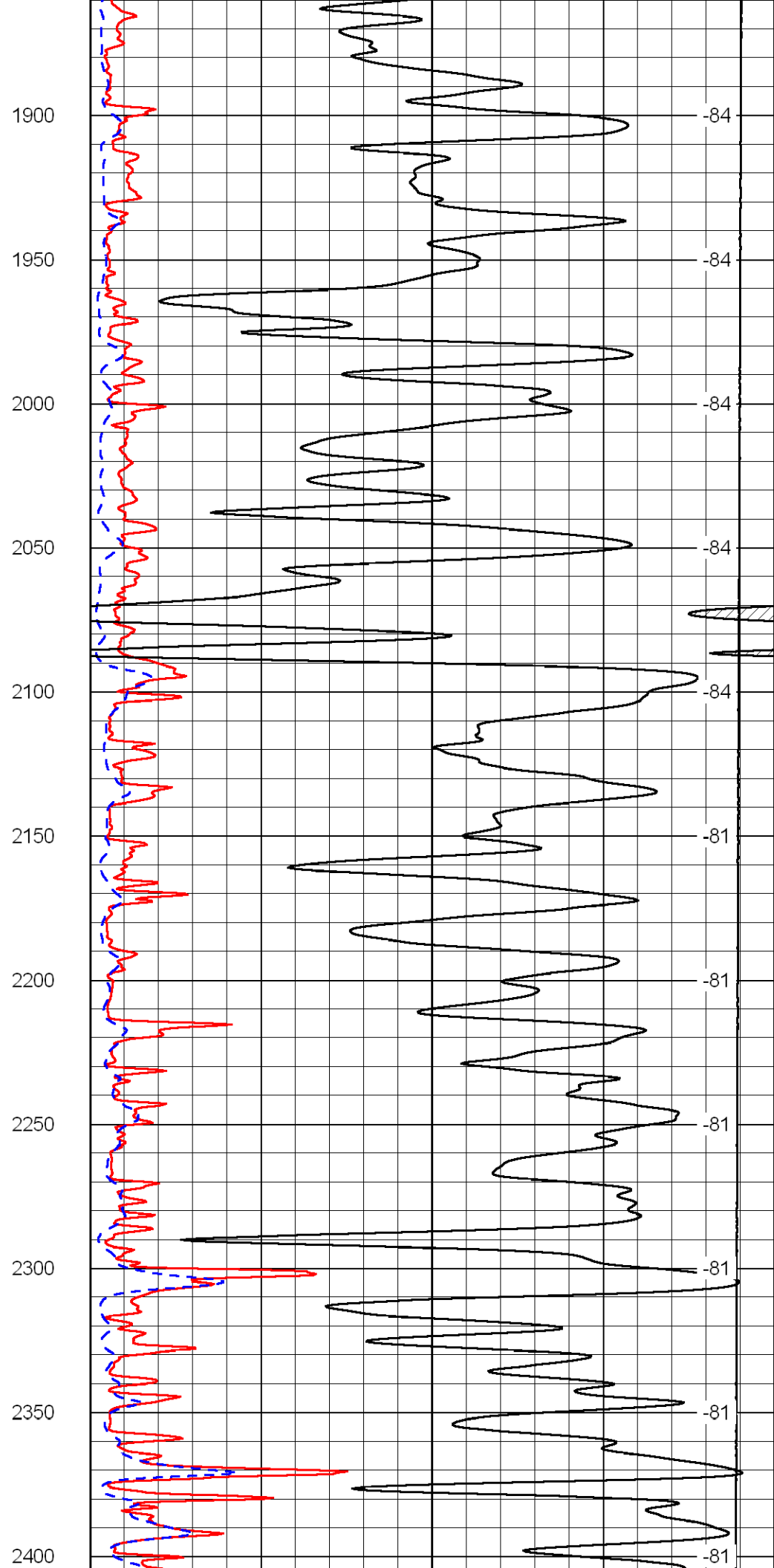
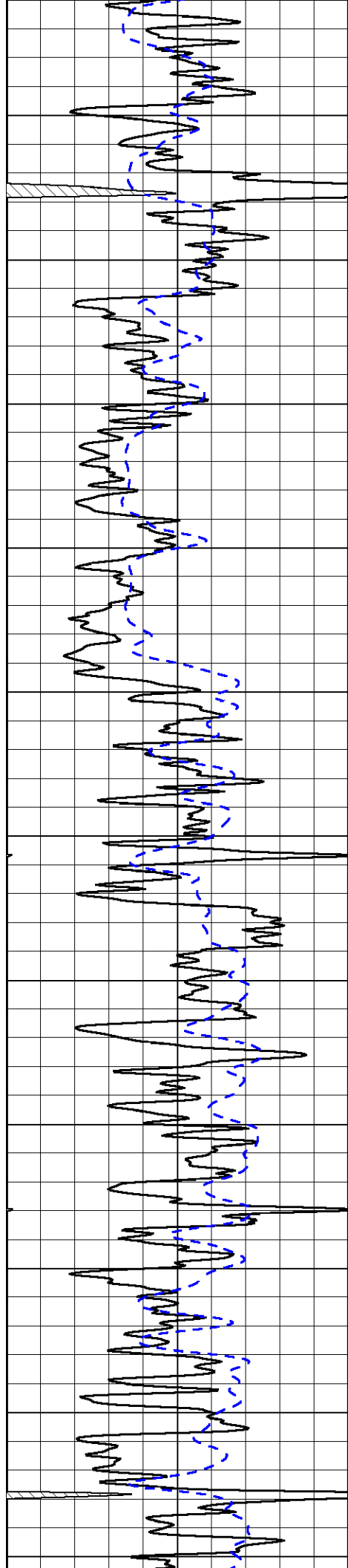
0 Gamma Ray 150  
-200 SP 0

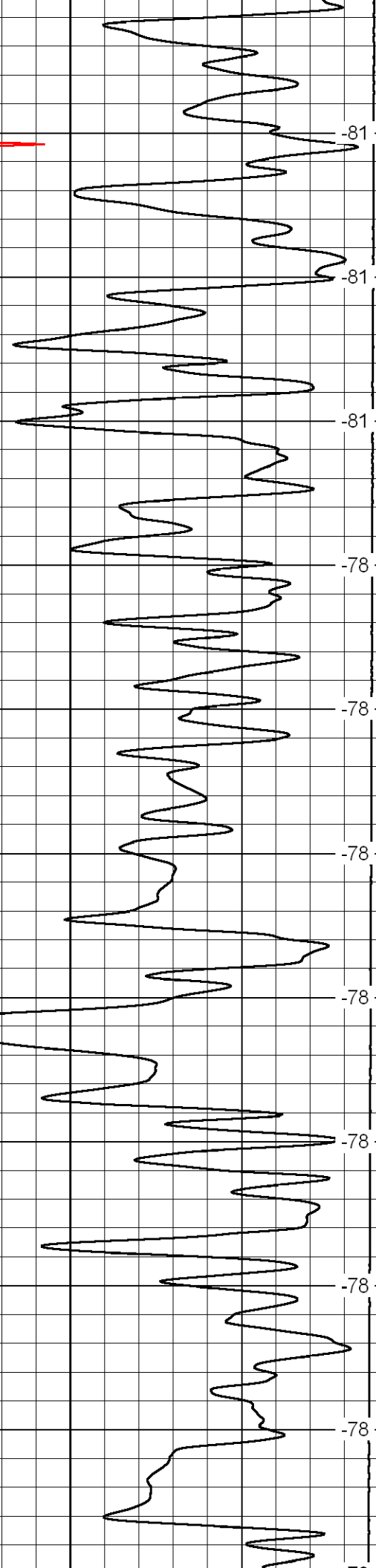
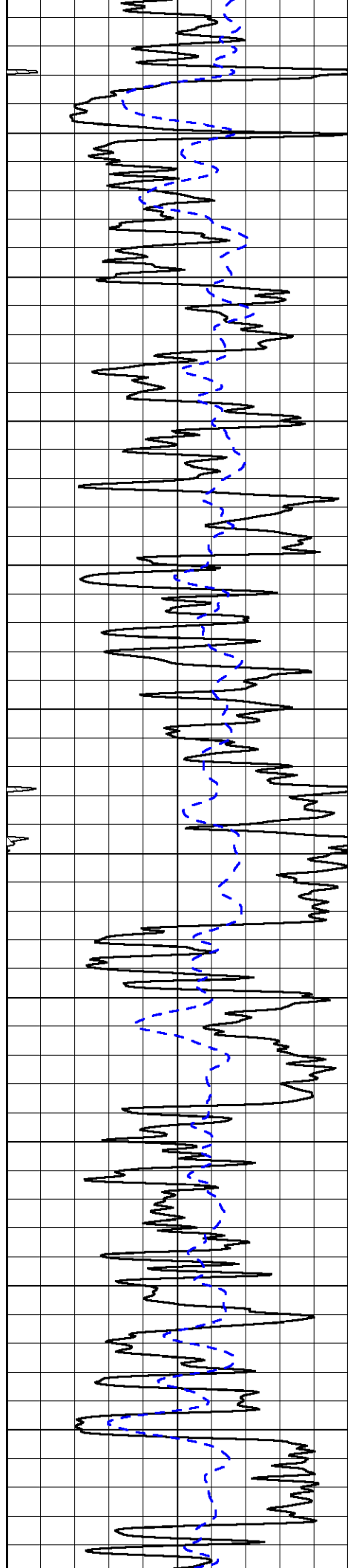
0 Shallow Resistivity 50  
0 Deep Resistivity 50  
1000 Conductivity 0  
15000 Line Tension 0  
50 Shallow Resistivity 500  
50 Deep Resistivity 500

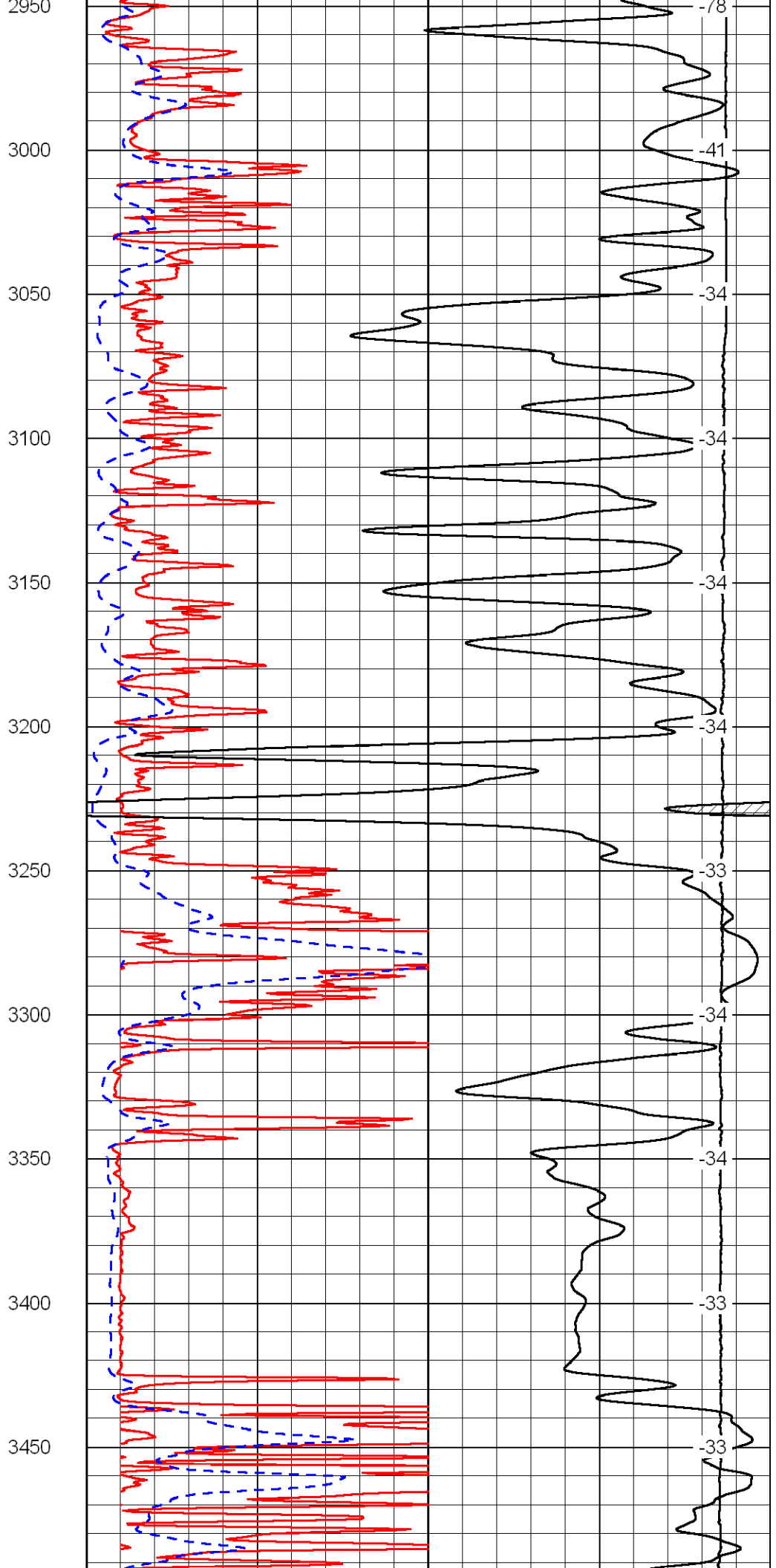
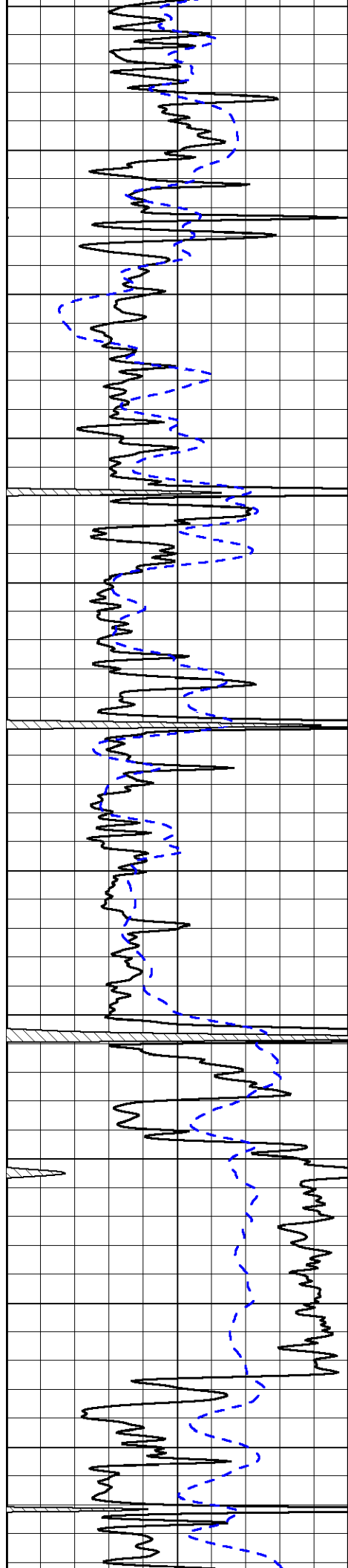
LSPD

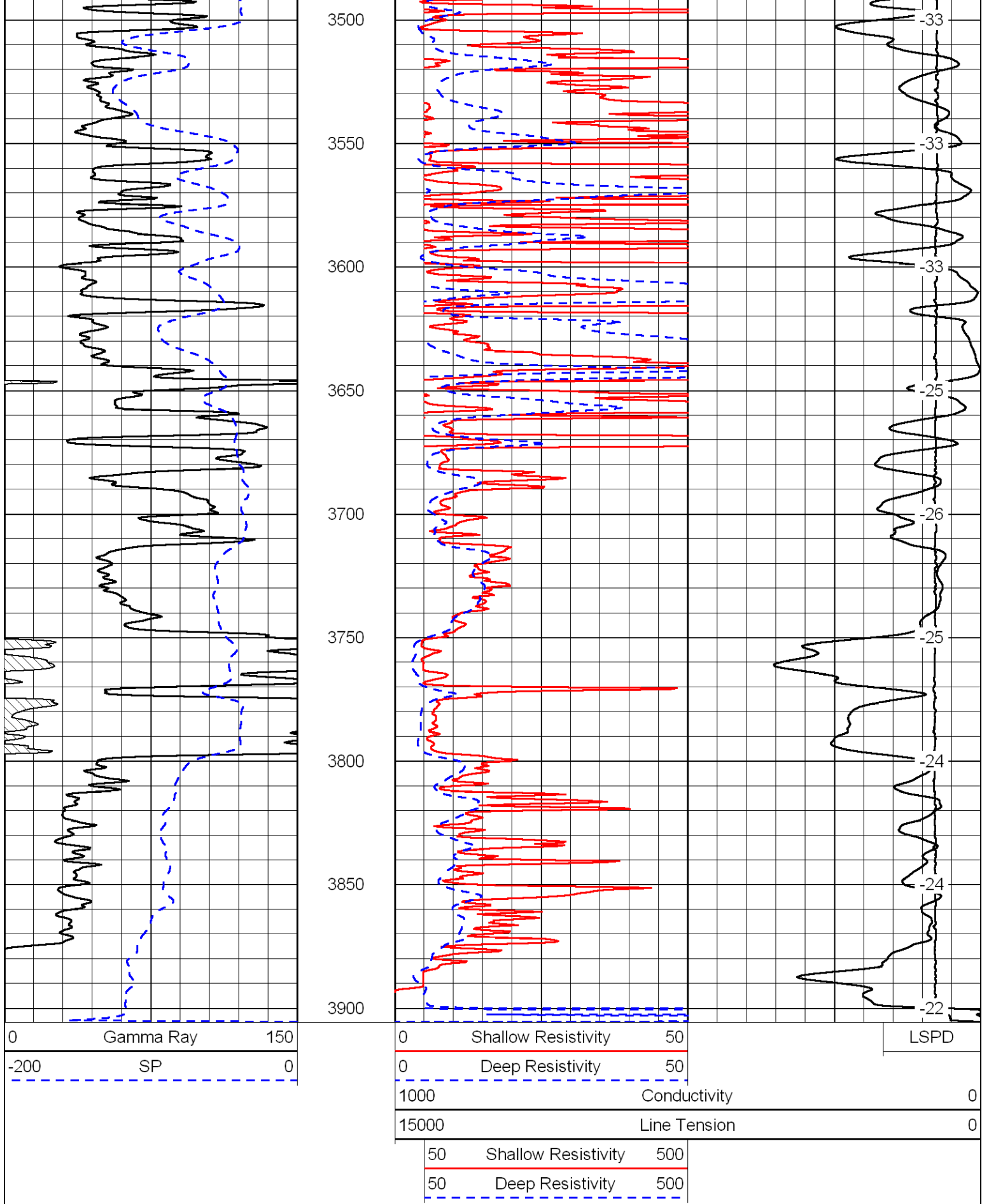










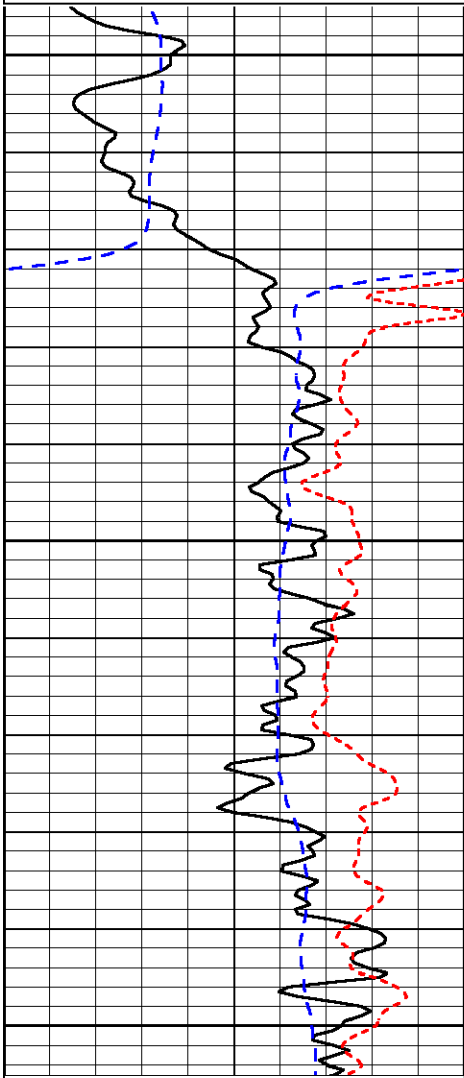


Database File: Id\_vmd\_1-3hd.db  
 Dataset Pathname: dil/ldstck  
 Presentation Format: dil  
 Dataset Creation: Thu Mar 15 09:43:47 2012  
 Charted by: Depth in Feet scaled 1:240

0	Gamma Ray	150
-160	RXO/RT	40
-200	SP	0

0.2	Deep Resistivity	2000
0.2	Medium Resistivity	2000
0.2	Shallow Resistivity	2000
10000	Line Tension	0

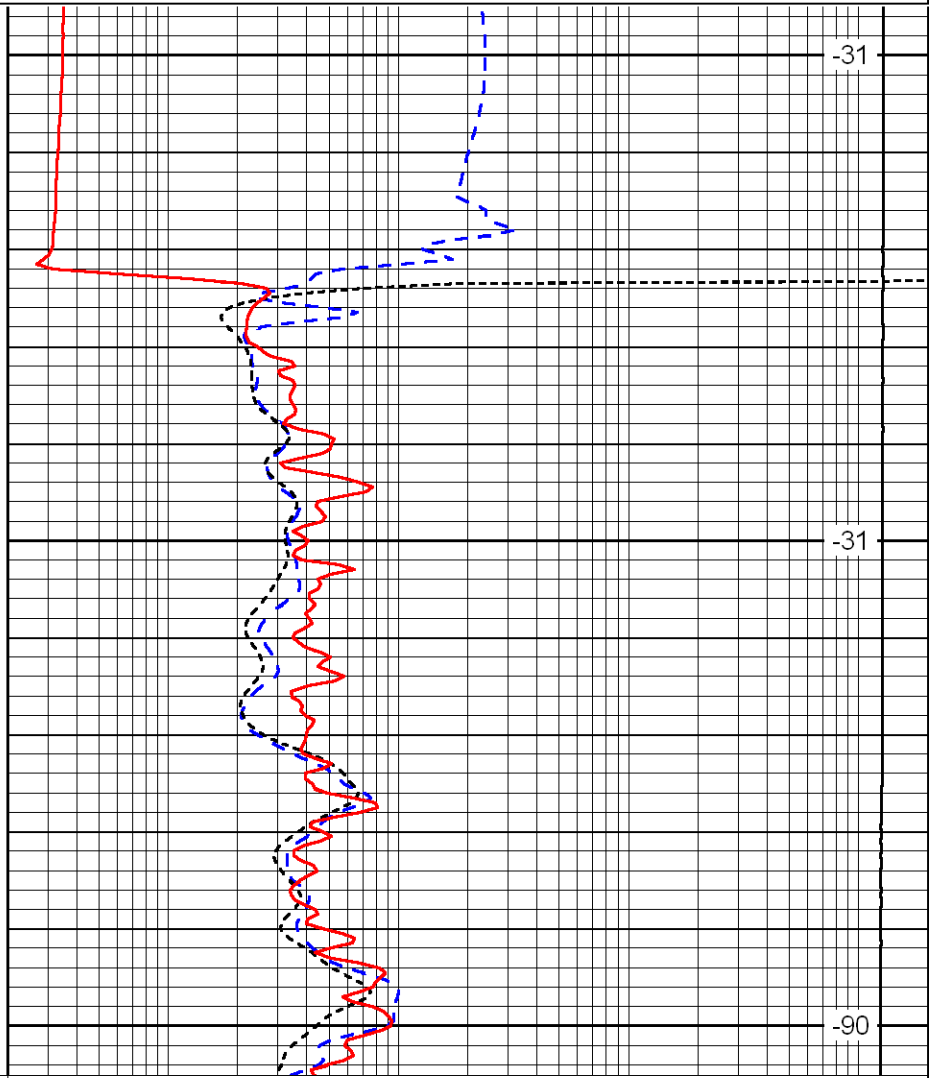
LSPD



850

900

950



-31

-31

-90

0	Gamma Ray	150
-160	RXO/RT	40
-200	SP	0

0.2	Deep Resistivity	2000
0.2	Medium Resistivity	2000
0.2	Shallow Resistivity	2000
10000	Line Tension	0

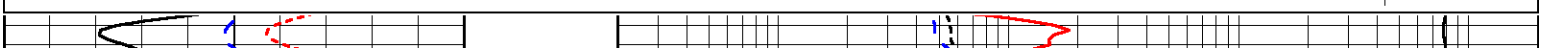
LSPD

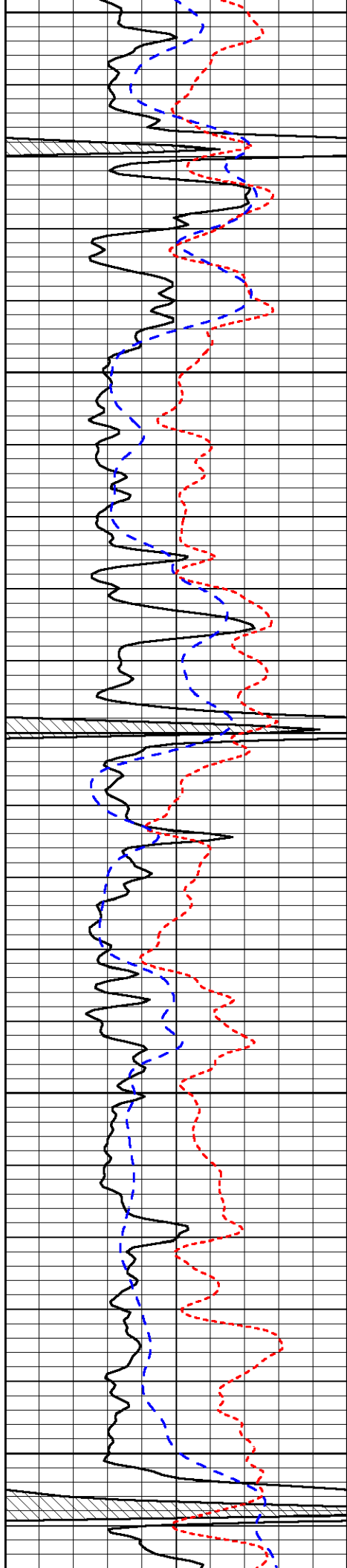
Database File: Id\_vmd\_1-3hd.db  
 Dataset Pathname: dil/ldstck  
 Presentation Format: dil  
 Dataset Creation: Thu Mar 15 09:43:47 2012  
 Charted by: Depth in Feet scaled 1:240

0	Gamma Ray	150
-160	RXO/RT	40
-200	SP	0

0.2	Deep Resistivity	2000
0.2	Medium Resistivity	2000
0.2	Shallow Resistivity	2000
10000	Line Tension	0

LSPD





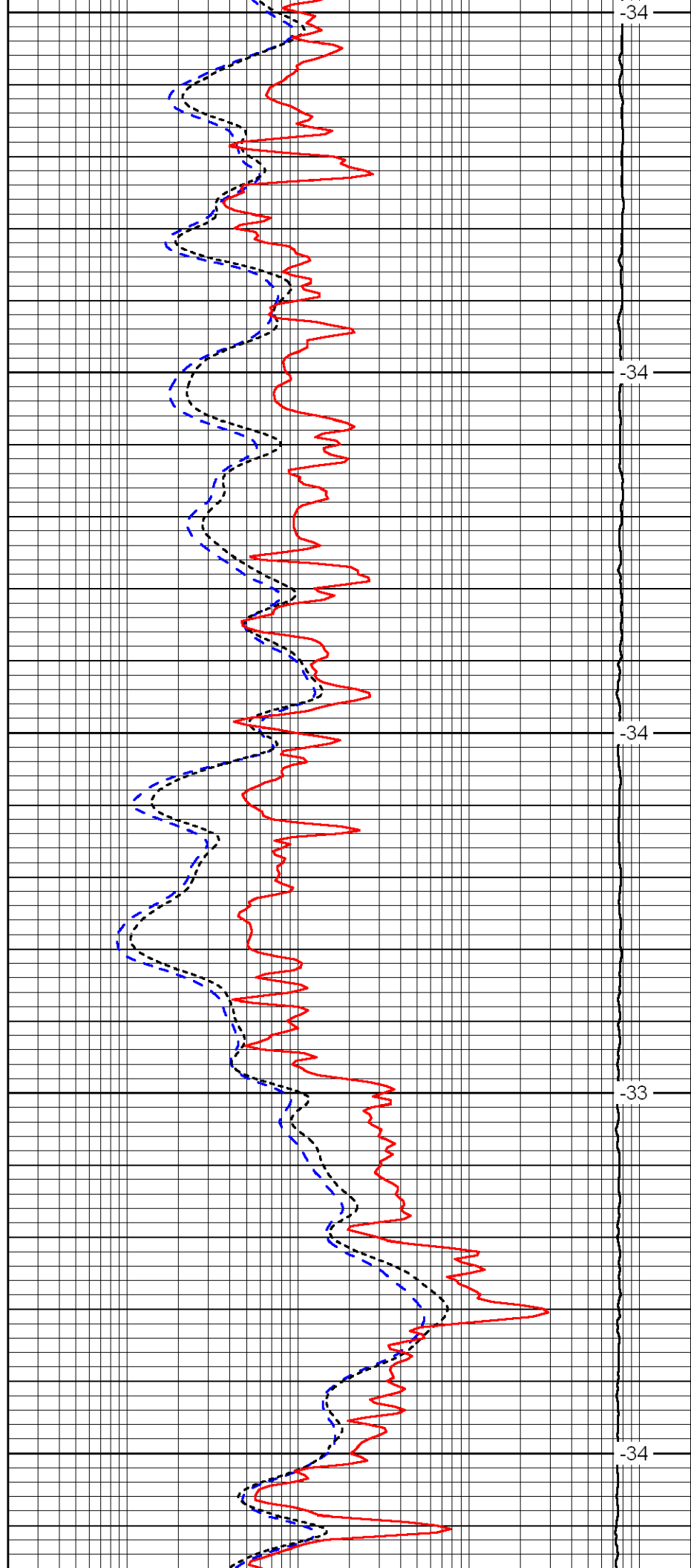
3100

3150

3200

3250

3300



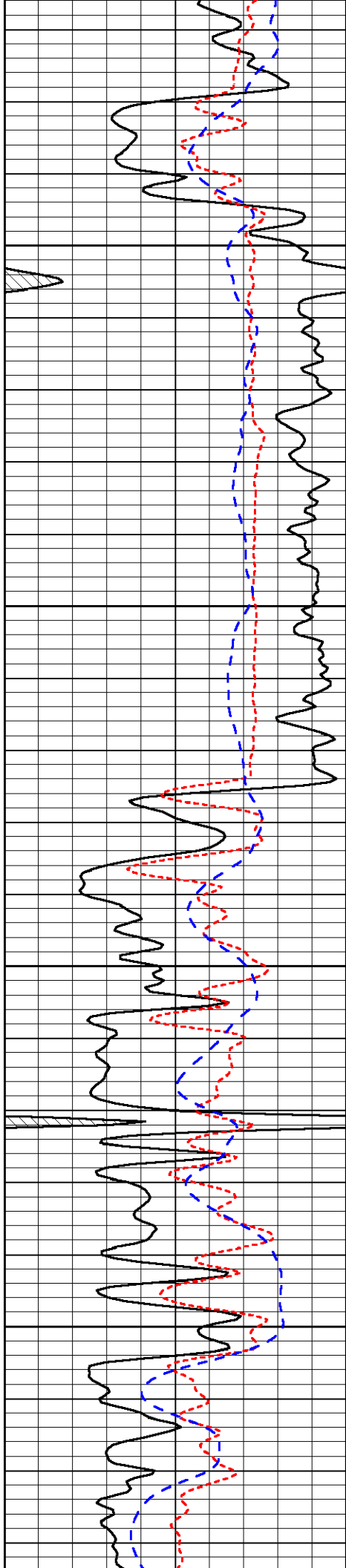
-34

-34

-34

-33

-34

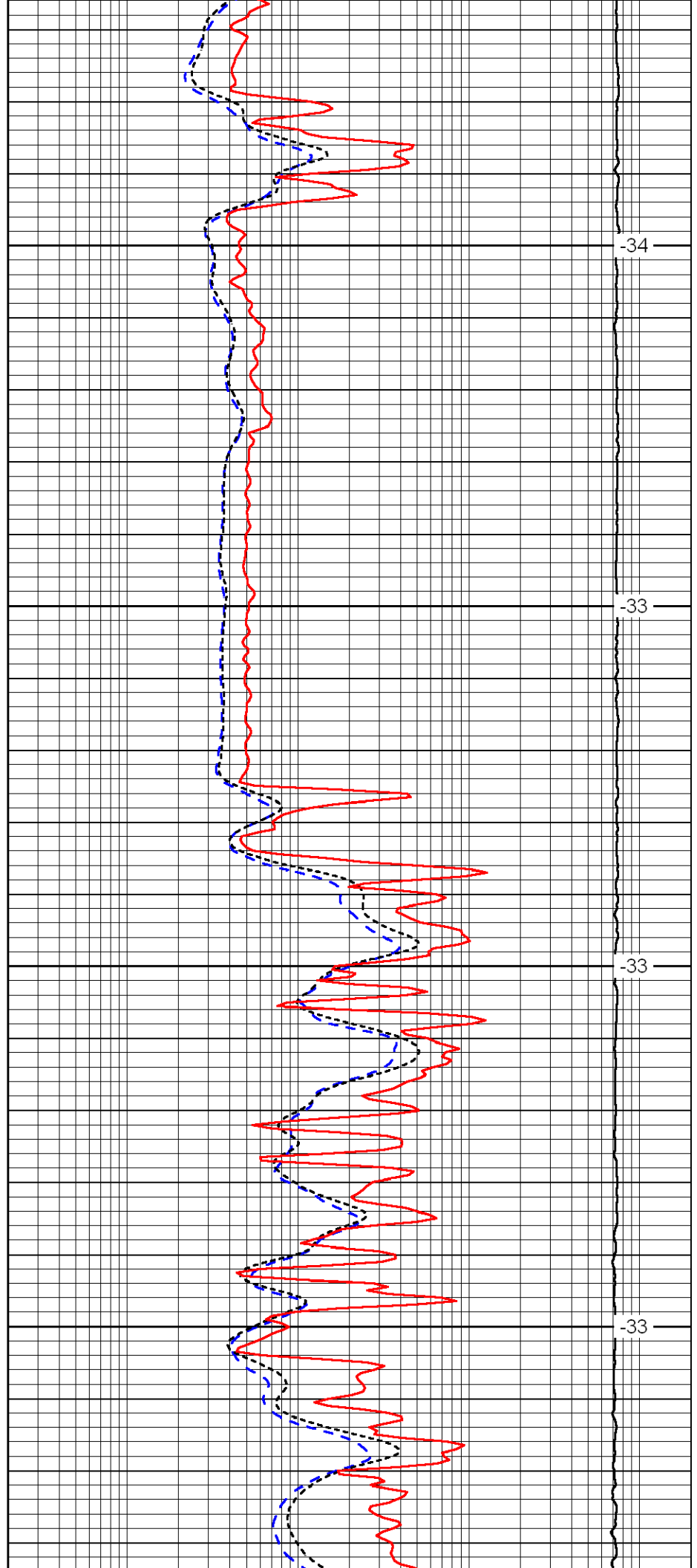


3350

3400

3450

3500

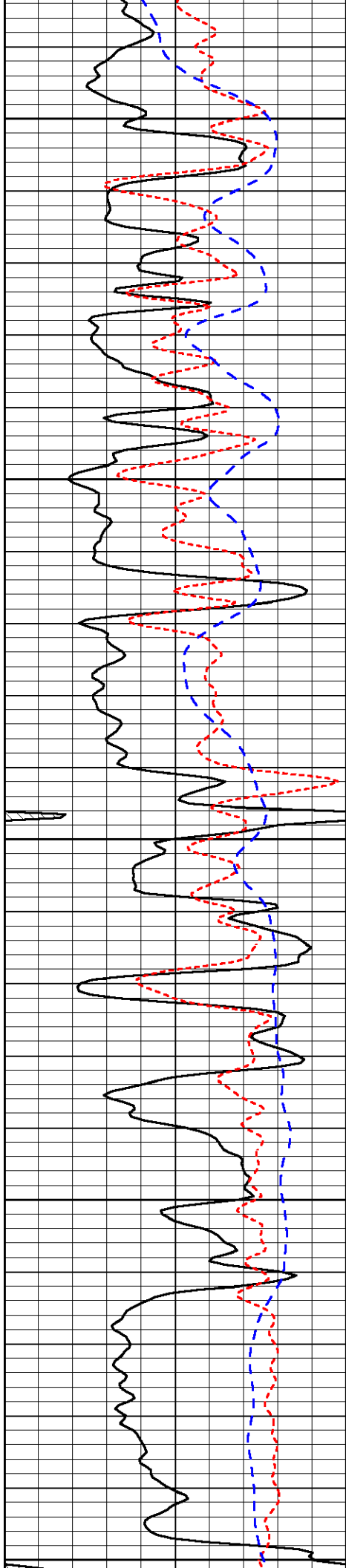


34

33

33

33



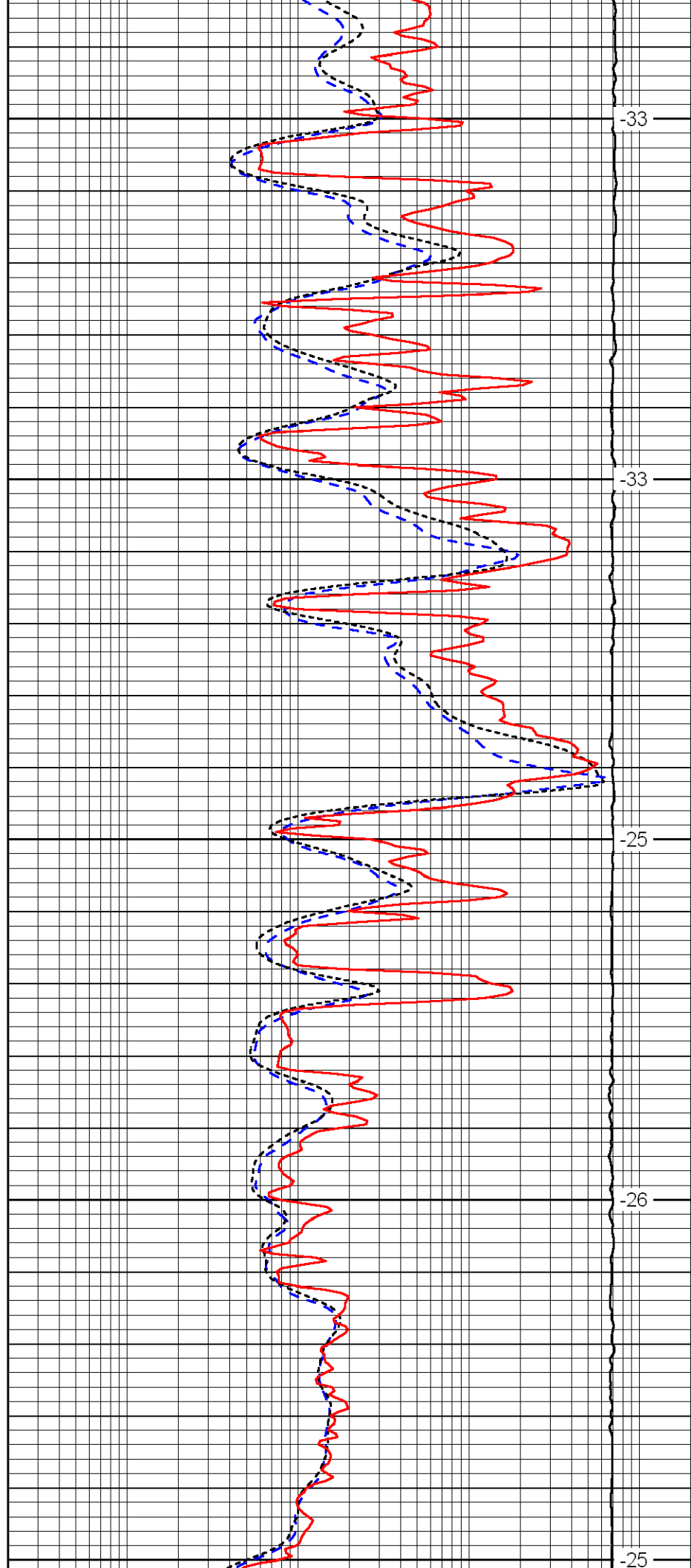
3550

3600

3650

3700

3750



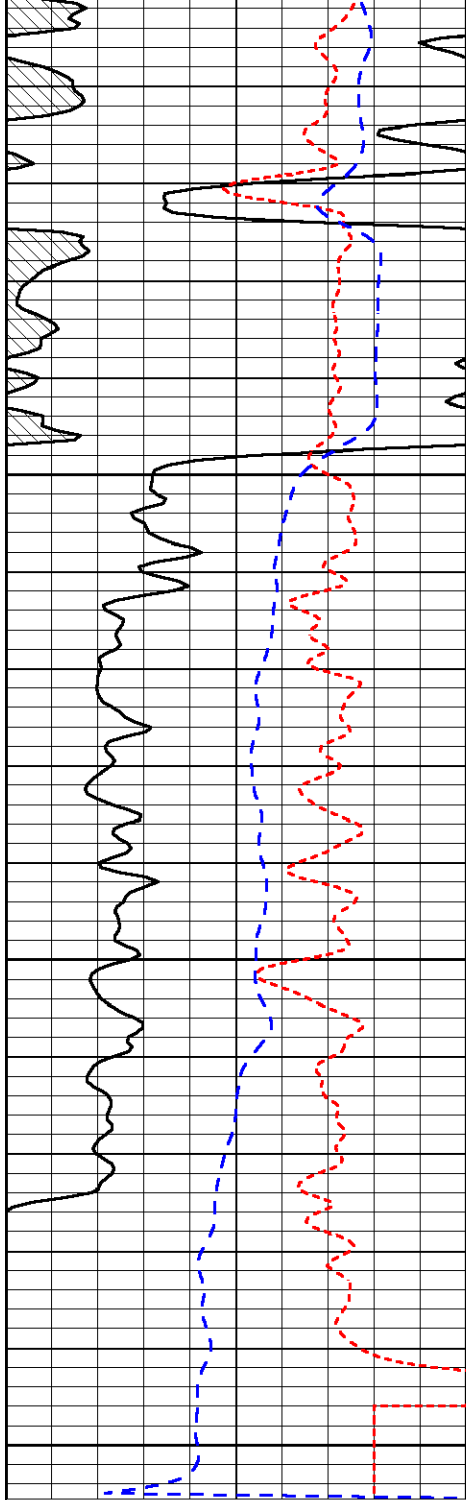
-33

-33

-25

-26

-25

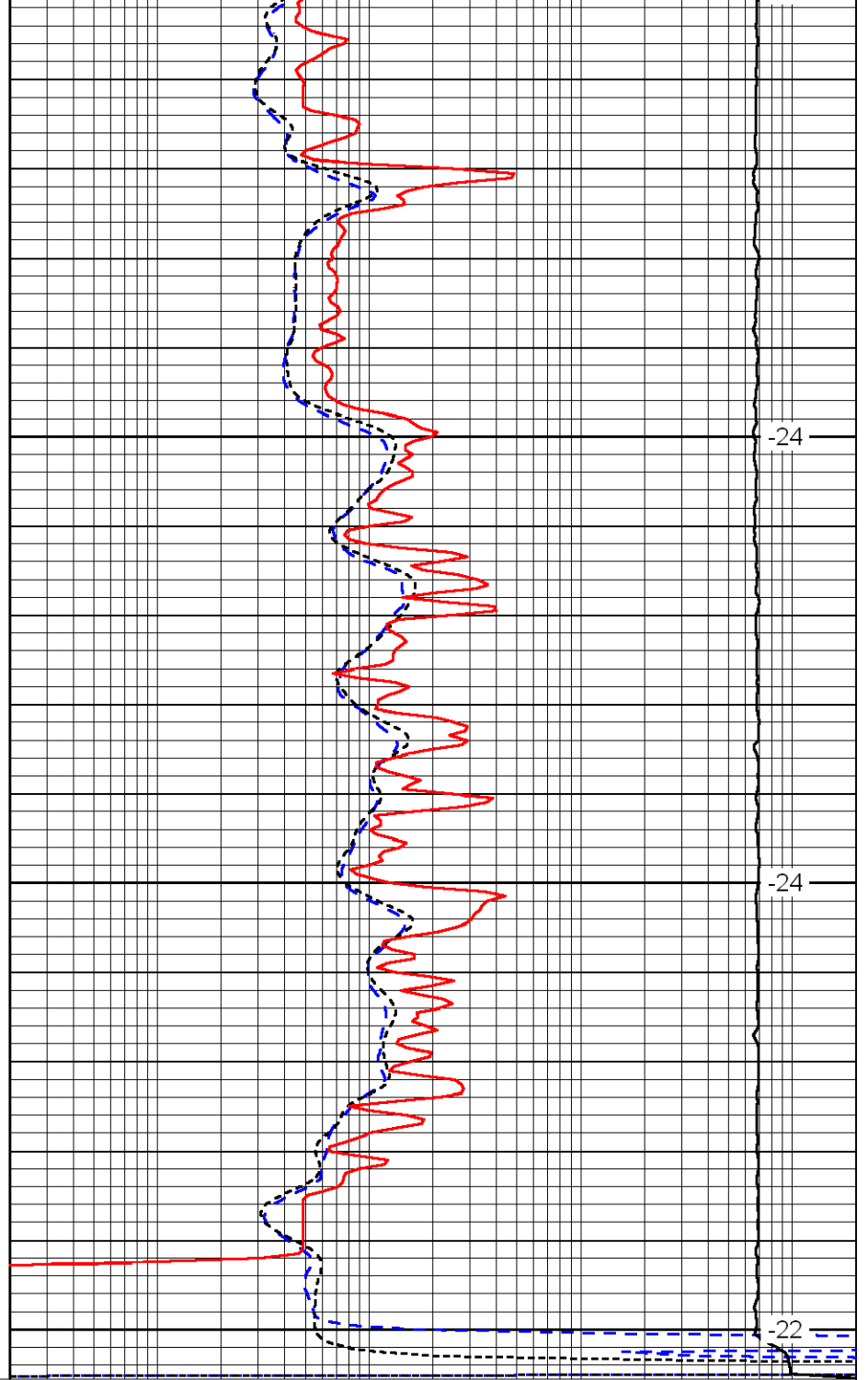


3800

3850

3900

0	Gamma Ray	150
-160	RXO/RT	40
-200	SP	0



-24

-24

-22

0.2	Deep Resistivity	2000
0.2	Medium Resistivity	2000
0.2	Shallow Resistivity	2000
10000	Line Tension	0

LSPD