



**SUPERIOR**  
Hays,  
Kansas

**SONIC**  
LOG

Company CHARTER ENERGY, INC.  
Well WERTH #1  
Field  
County ELLIS  
State KANSAS

Company CHARTER ENERGY, INC.  
Well WERTH #1  
Field  
County ELLIS State KANSAS

Location: API #: NO INTENT ON RIG  
330' FNL & 1020' FEL  
SEC 11 TWP 15S RGE 18W  
Permanent Datum GROUND LEVEL Elevation 2012  
Log Measured From KELLY BUSHING 7' A.G.L.  
Drilling Measured From KELLY BUSHING  
Other Services  
CDL/CNL  
DIL/MICRO  
Elevation  
K.B. 2019  
D.F.  
G.L. 2012

Date	3-13-12
Run Number	TWO
Depth Driller	3603
Depth Logger	3606
Bottom Logged Interval	3600
Top Log Interval	1178
Casing Driller	1188
Casing Logger	1188
Bit Size	7.875
Type Fluid in Hole	CHEMICAL MUD
Density / Viscosity	9.2 / 58
pH / Fluid Loss	8.5 / 10.4
Source of Sample	FLOWLINE
Rim @ Meas. Temp	0.75 @ 68F
Rmf @ Meas. Temp	0.56 @ 68F
Rmc @ Meas. Temp	0.90 @ 68F
Source of Rmf / Rmc	MEASURED
Rim @ BHT	.460 @ 111F
Time Circulation Stopped	2 HOURS
Time Logger on Bottom	1:15 A.M.
Maximum Recorded Temperature	111F
Equipment Number	860
Location	HAYS, KS.
Recorded By	RUPP
Witnessed By	KURT TALBOTT

<<< Fold Here >>>

All interpretations are opinions based on inferences from electrical or other measurements and we cannot and do not guarantee the accuracy or correctness of any interpretation, and we shall not, except in the case of gross or willful negligence on our part, be liable or responsible for any loss, costs, damages, or expenses incurred or sustained by anyone resulting from any interpretation made by any of our officers, agents or employees. These interpretations are also subject to our general terms and conditions set out in our current Price Schedule.

Comments

SUPERIOR WELL SERVICES  
785-628-6395  
THANK YOU FOR YOUR BUSINESS  
DIRECTIONS: HAYS & OLD #40, 6S, 2E, S INTO.

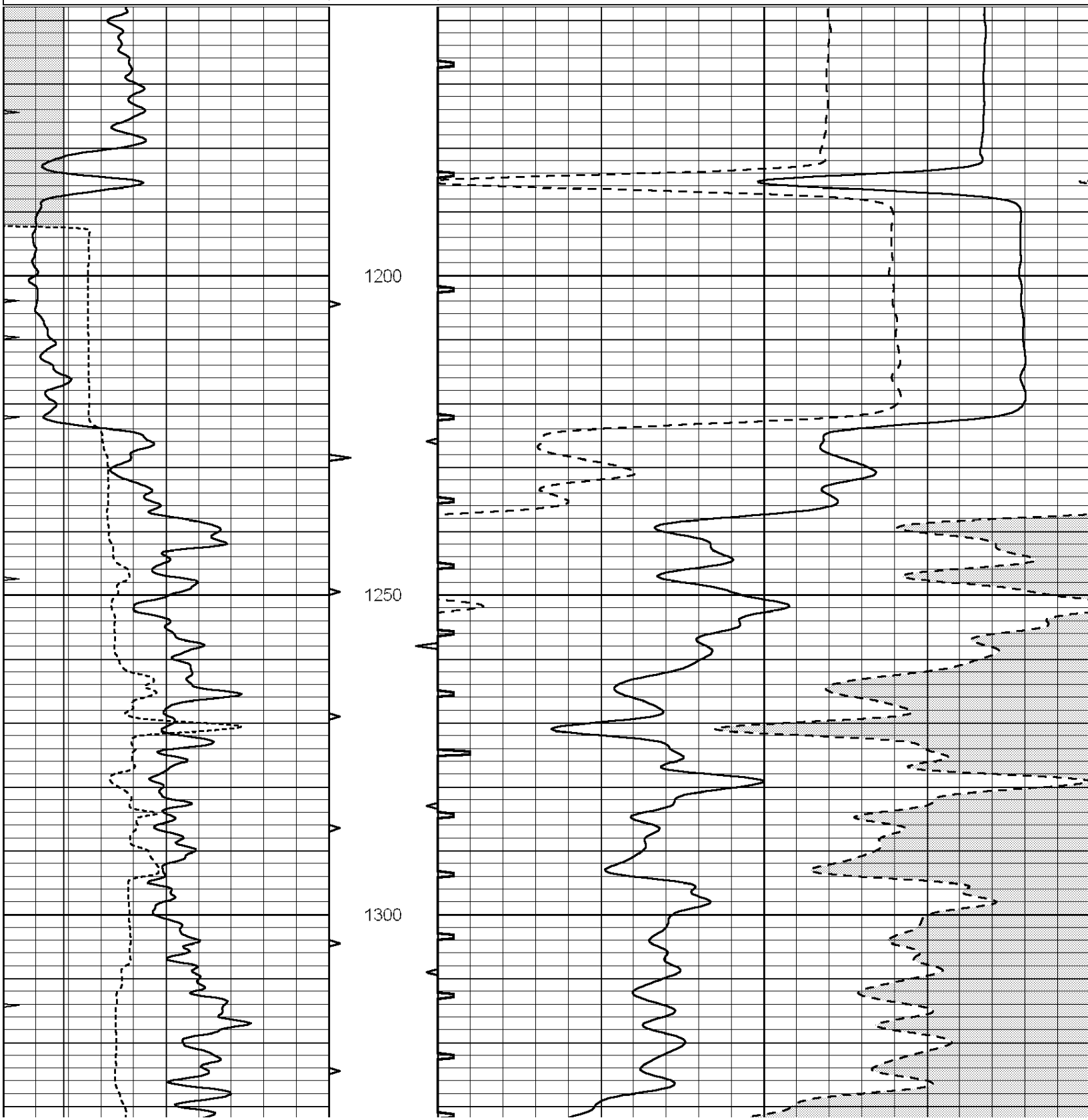


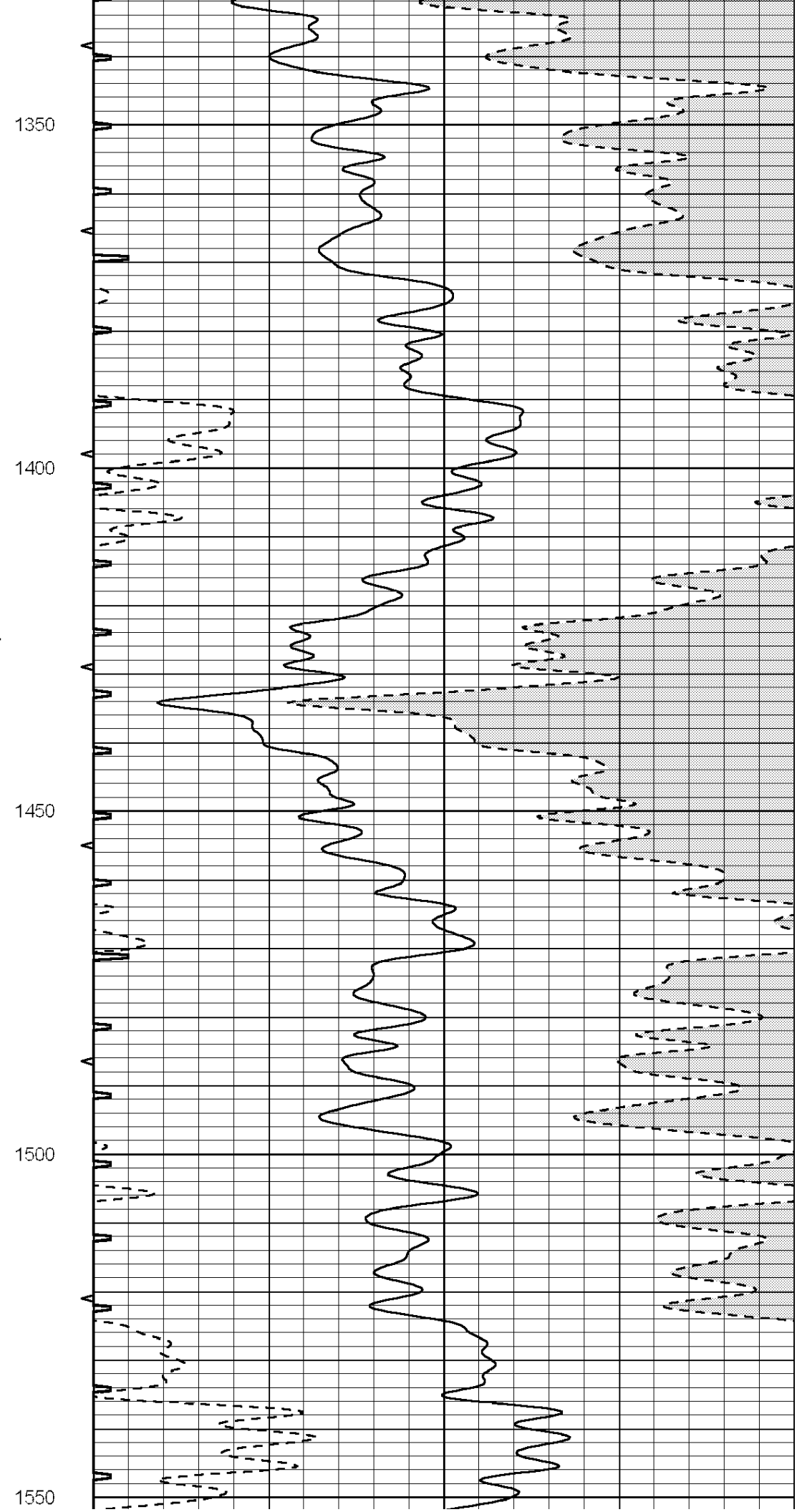
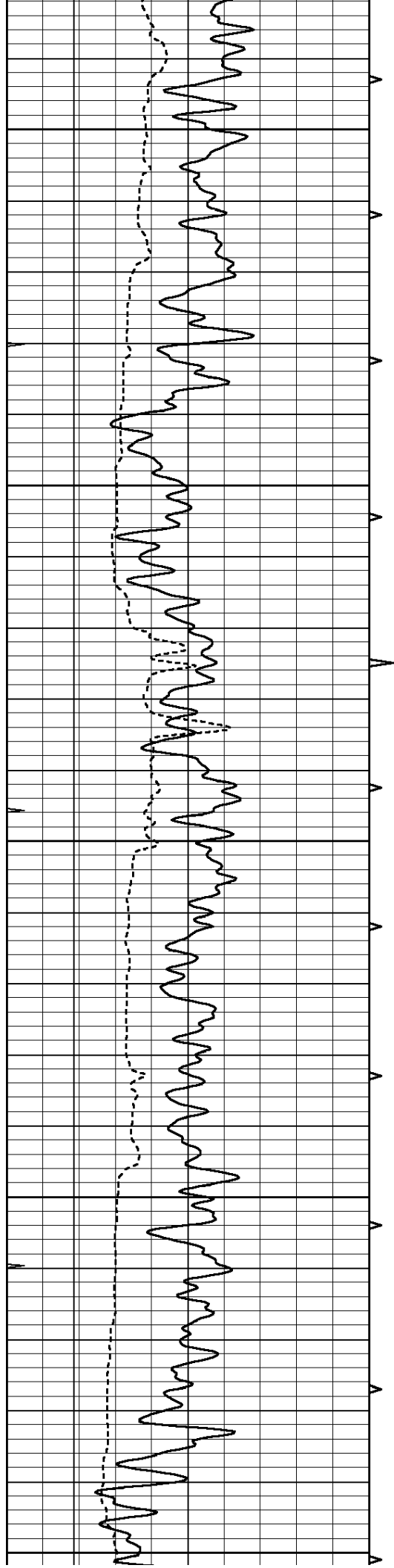
SUPERIOR  
Hays,  
Kansas

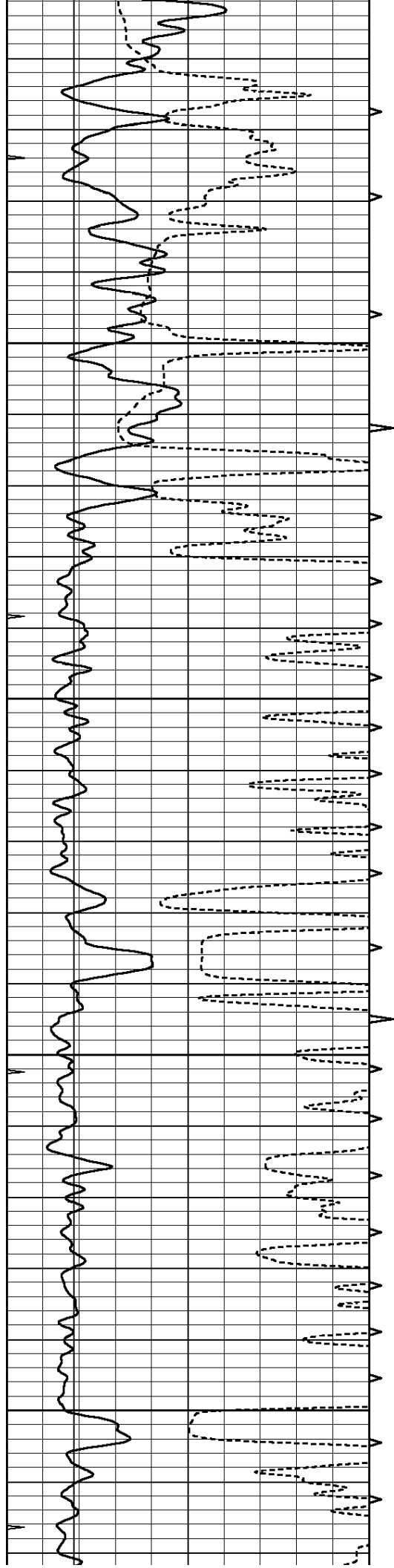
**MAIN SECTION**

Database File: 008495ddn.db  
 Dataset Pathname: pass5.1A  
 Presentation Format: slt  
 Dataset Creation: Tue Mar 13 04:04:39 2012  
 Charted by: Depth in Feet scaled 1:240

0	GAMMA RAY (GAPI)	150	ABHV	140	DELTA TIME (usec/ft)	40
6	MELCAL (in)	16	10 (ft3)	0 30	SONIC POROSITY (pu)	-10
0	MINMK	20	TBHV	0	ITT (msec)	20
			0 (ft3)	10		





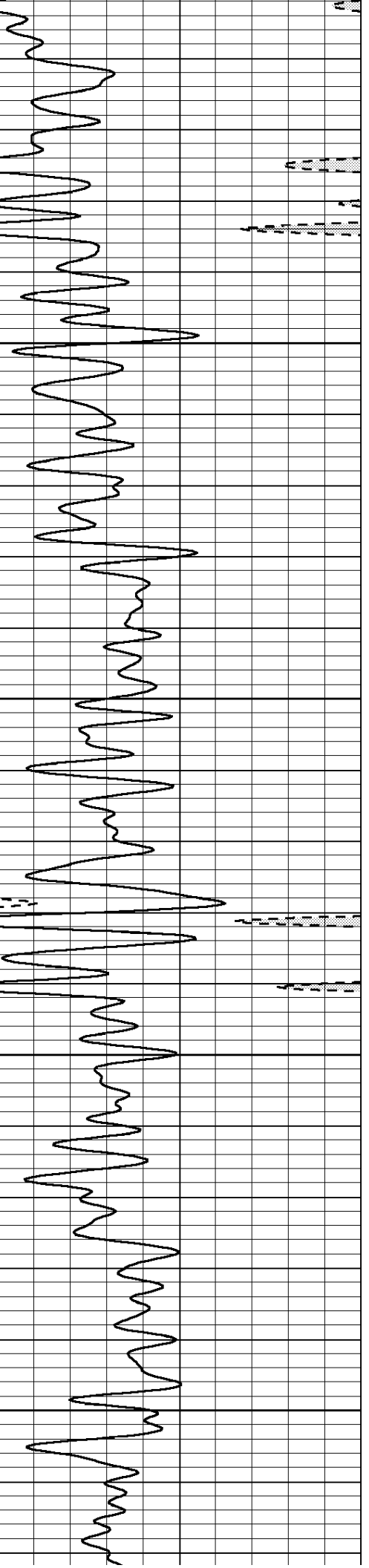
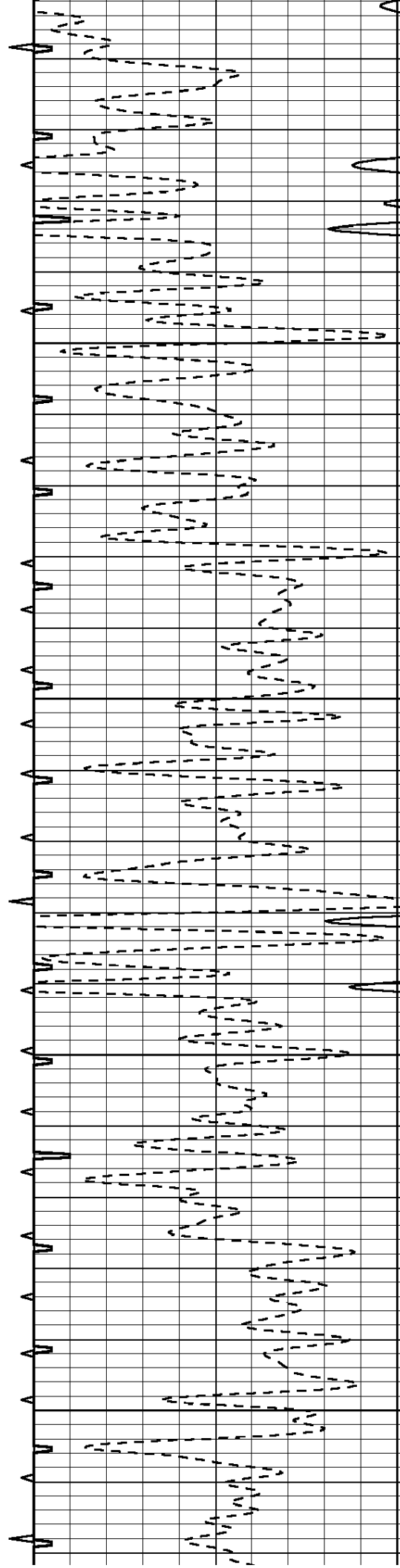


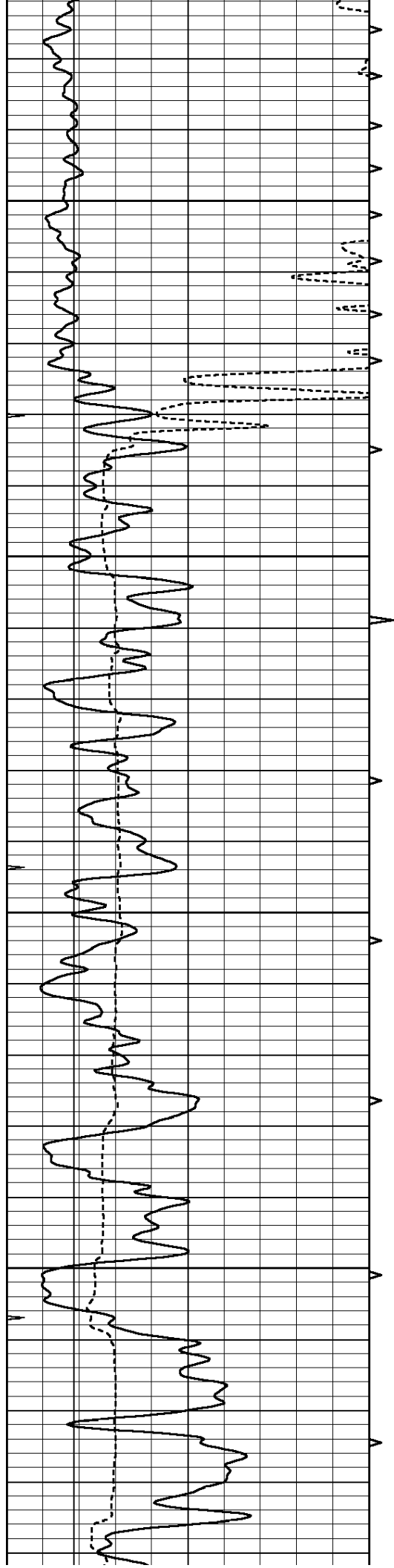
1600

1650

1700

1750



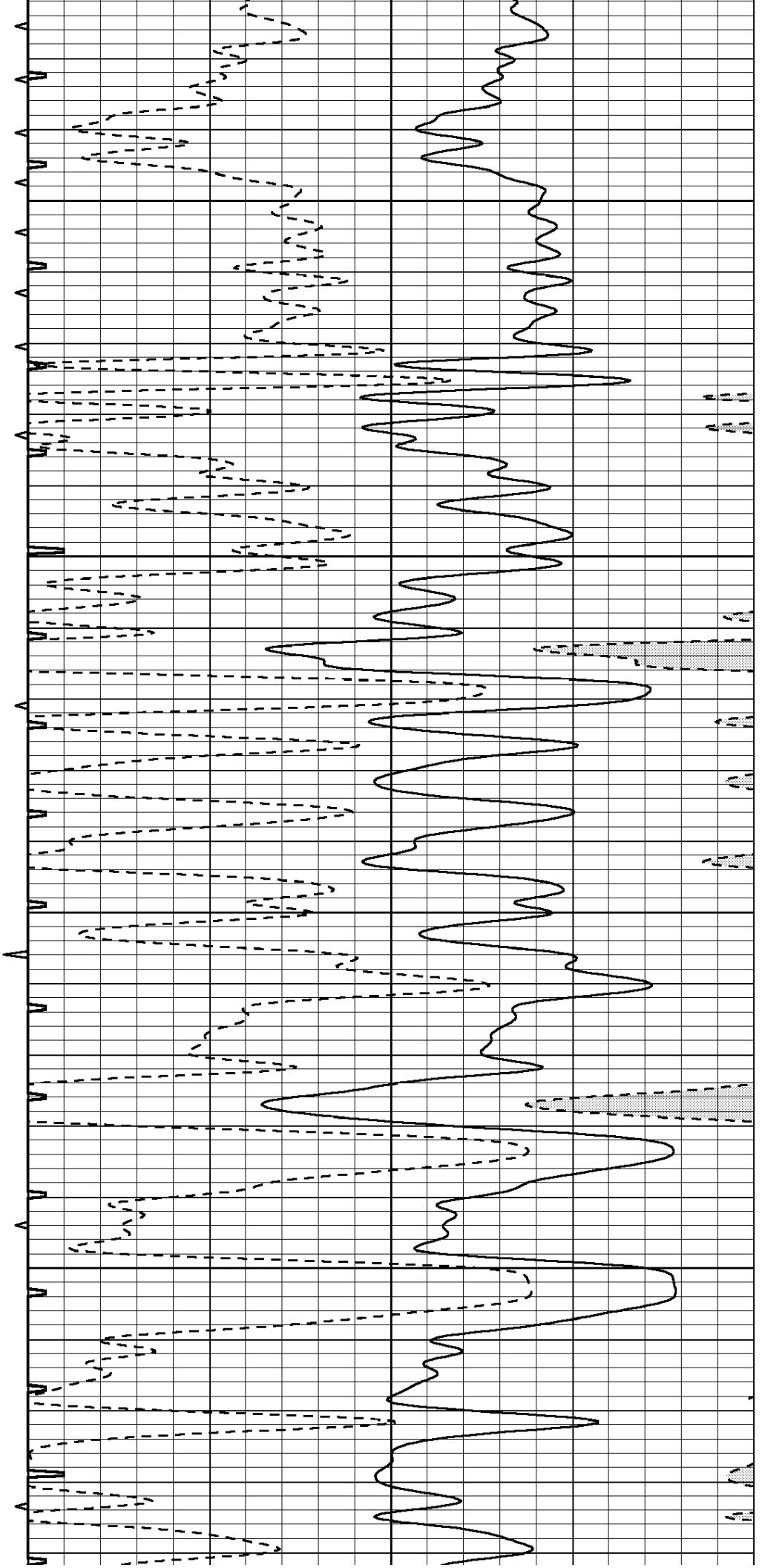


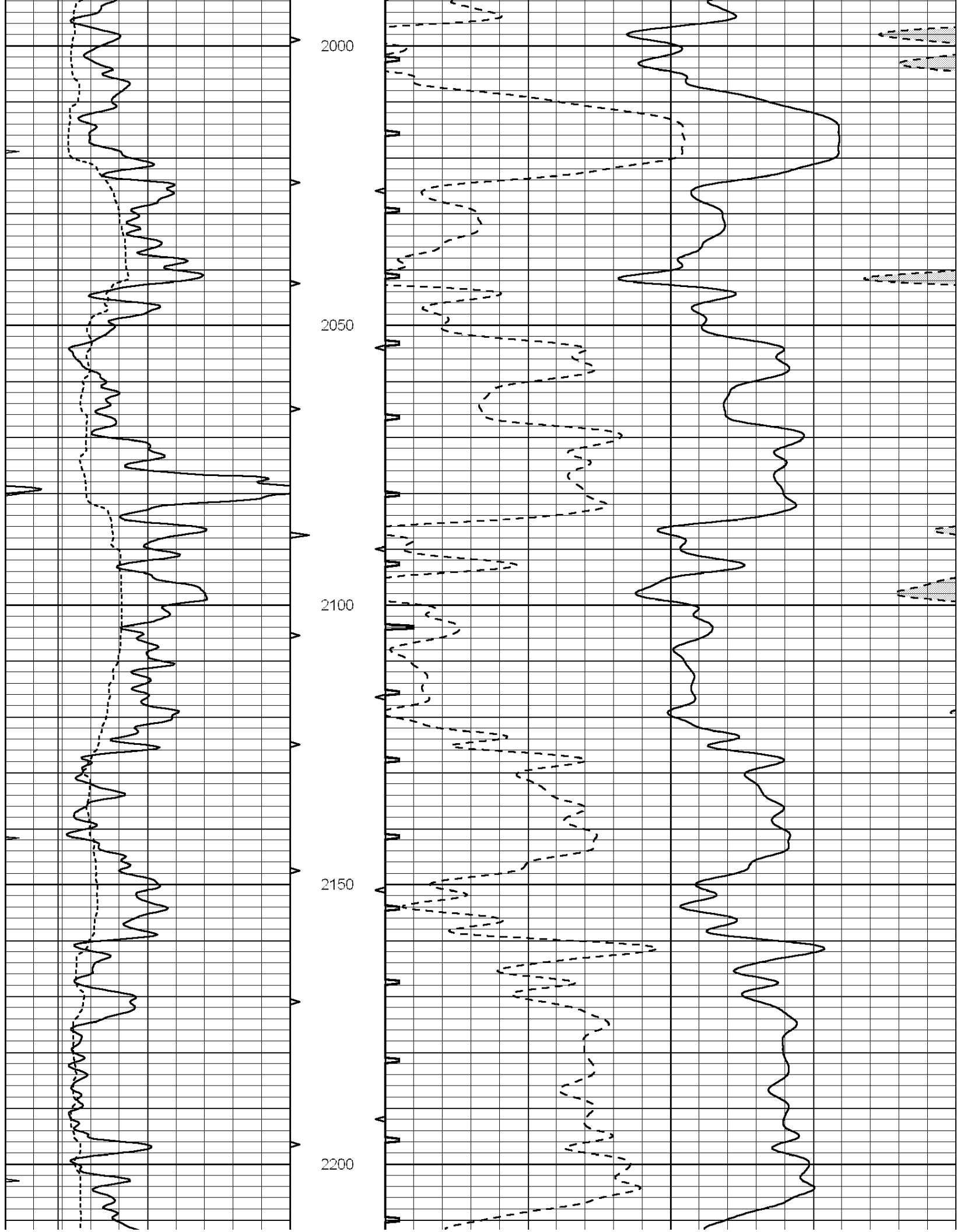
1800

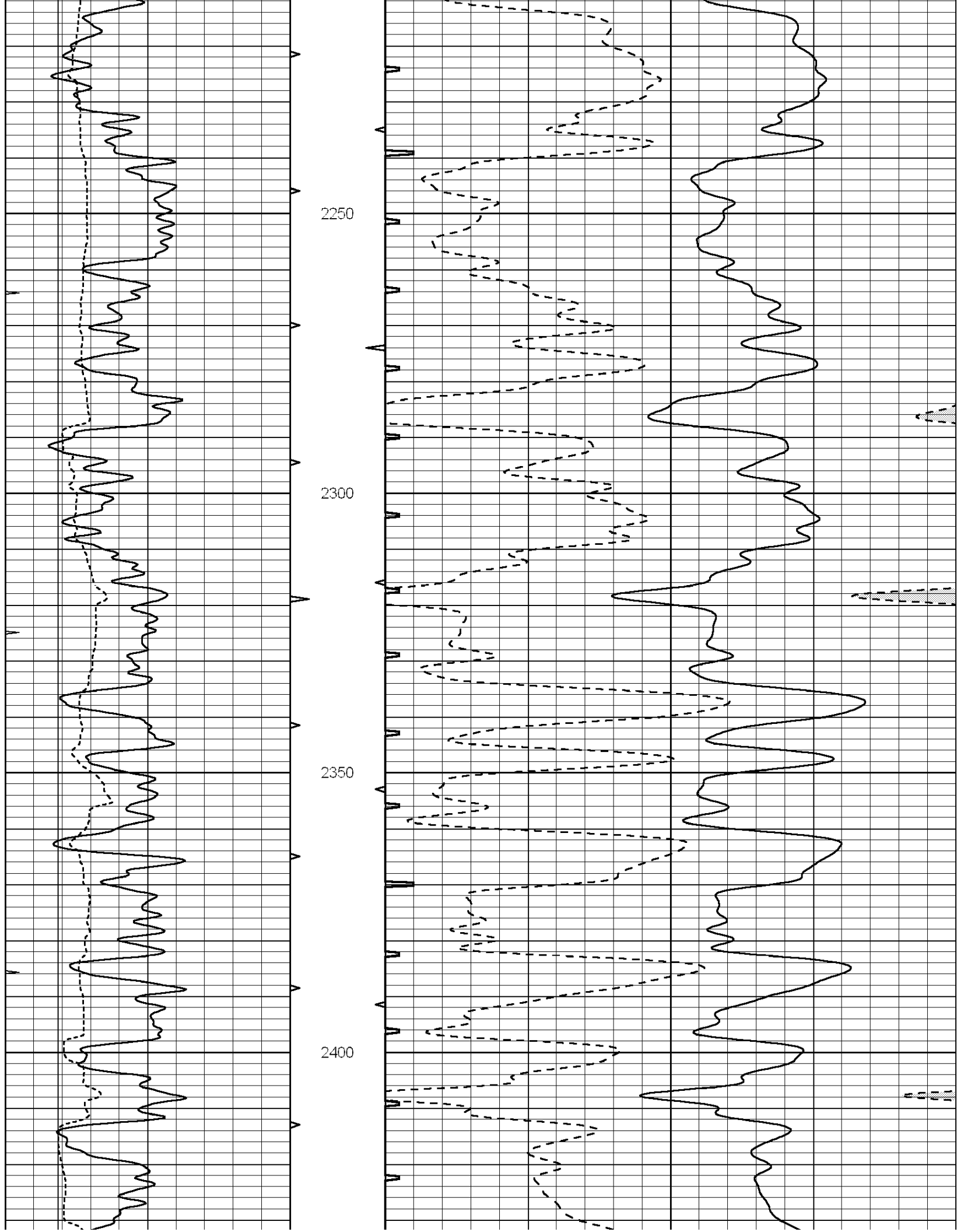
1850

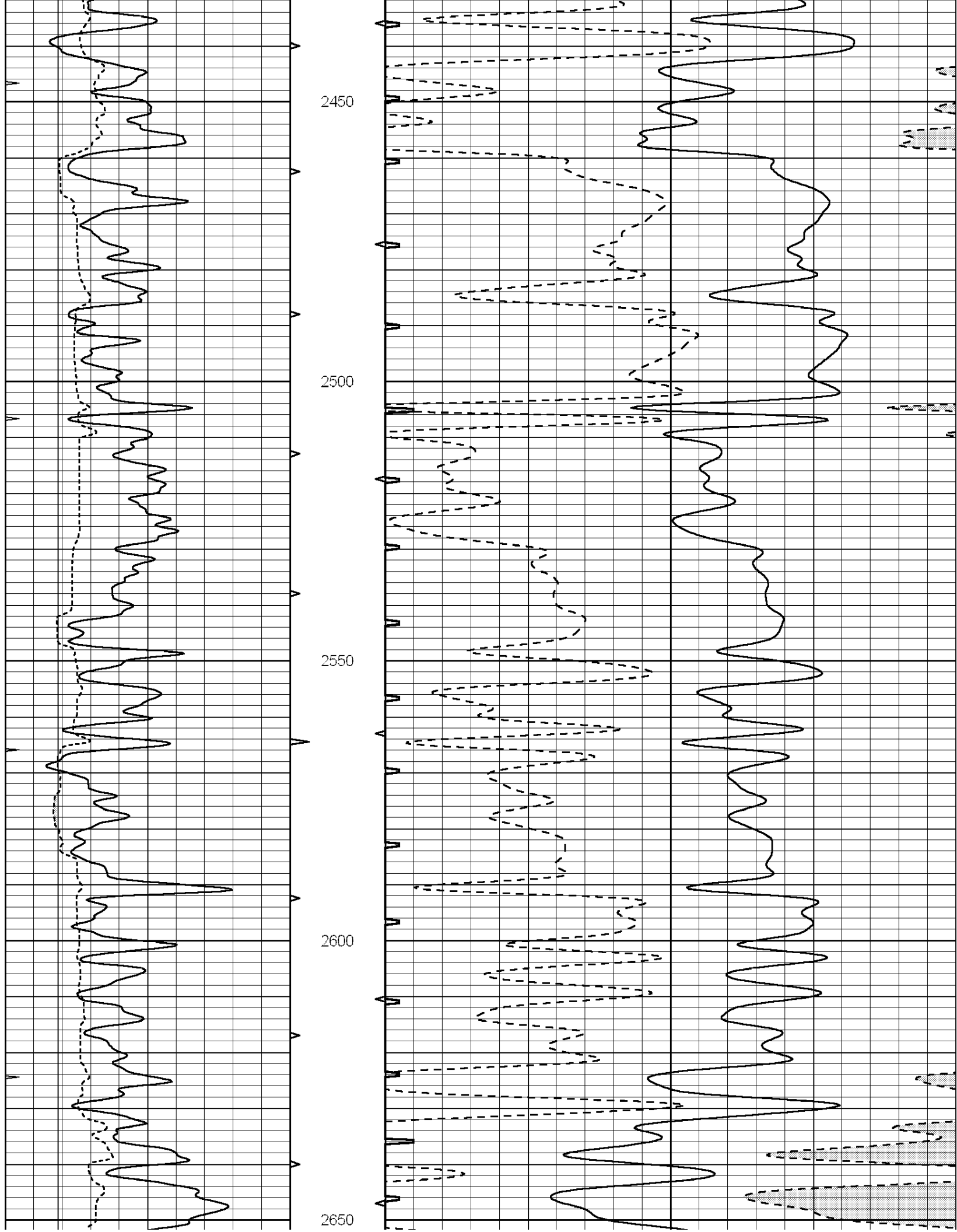
1900

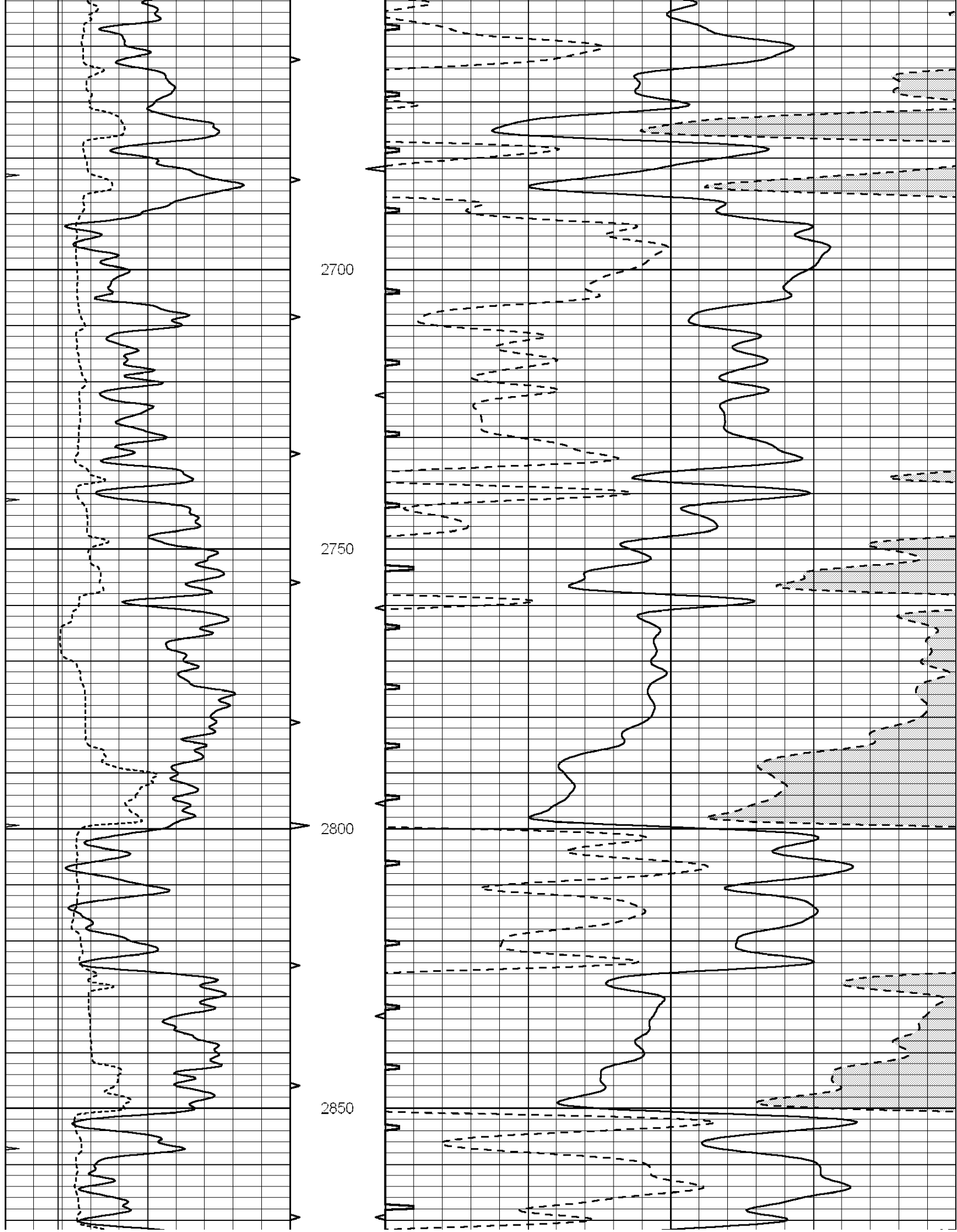
1950

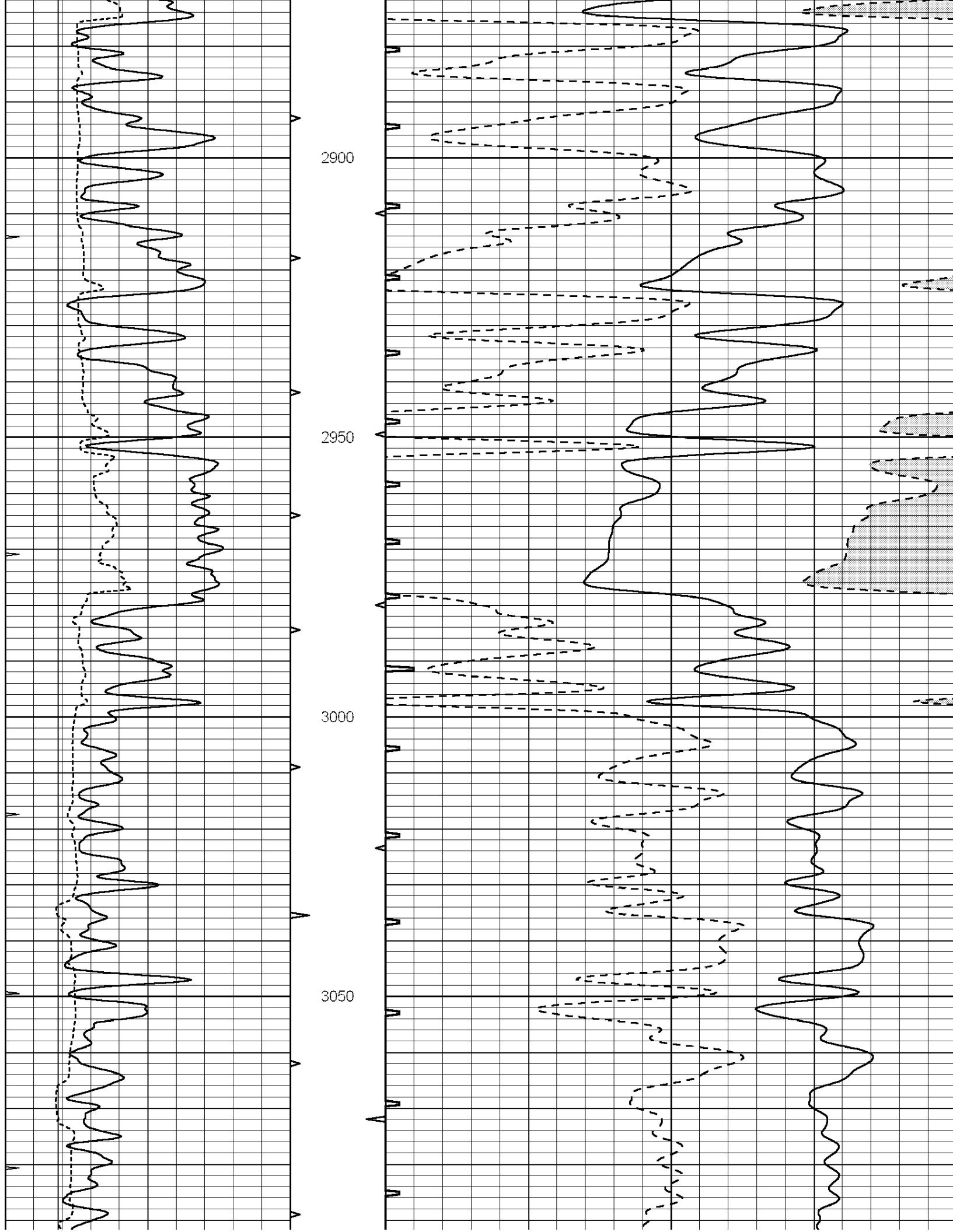


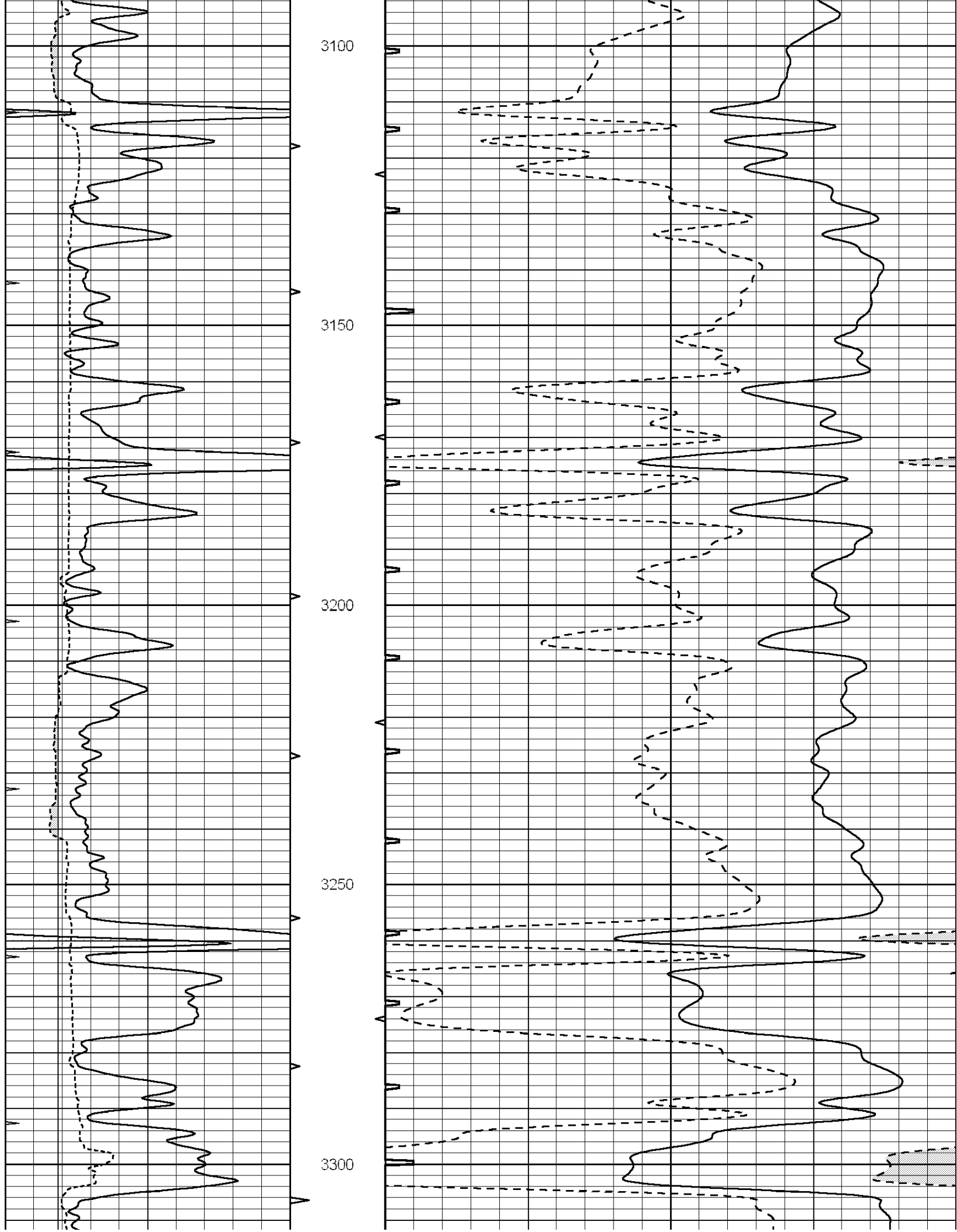


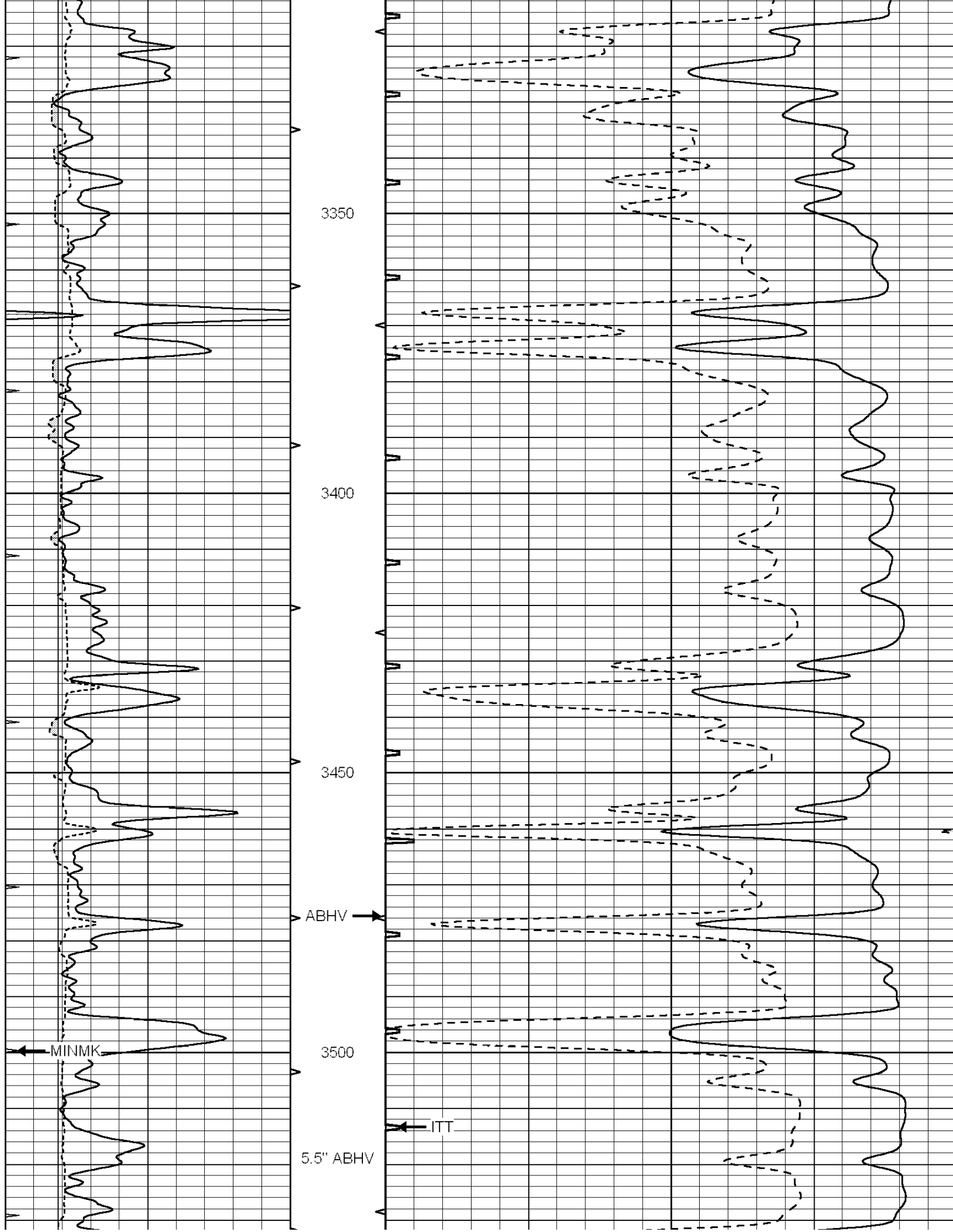


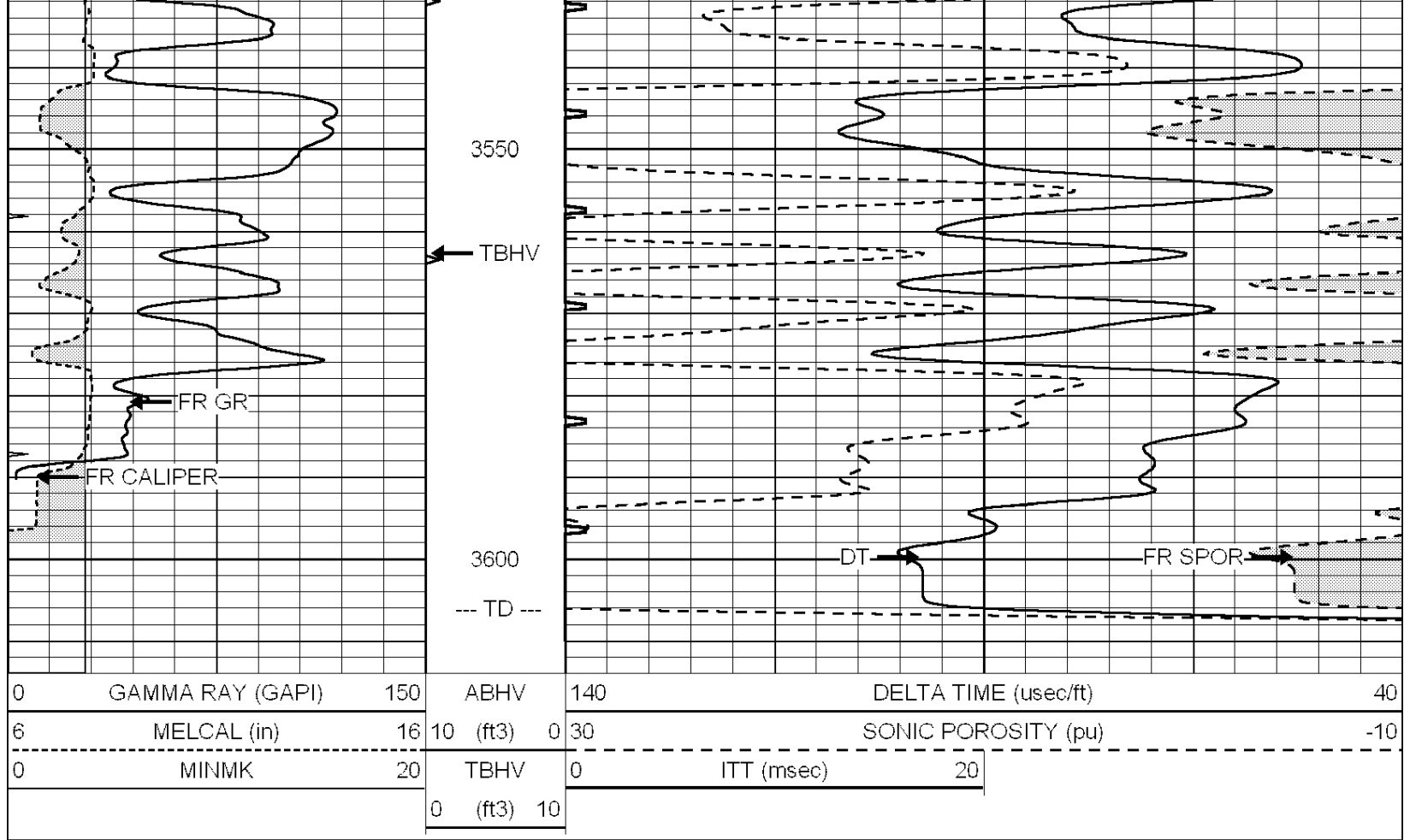










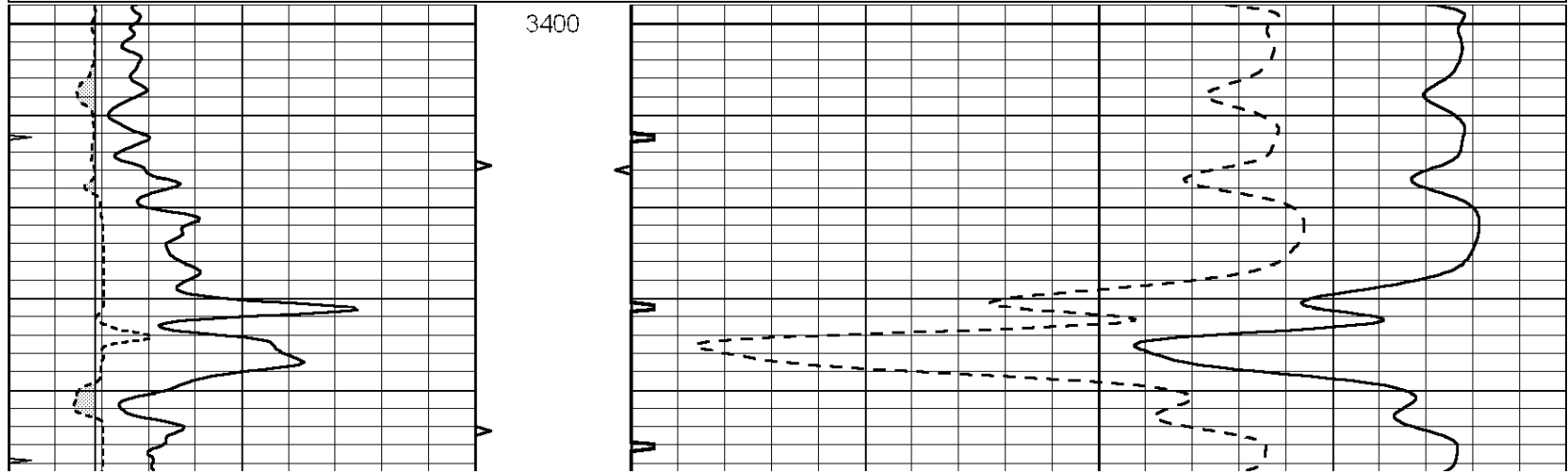


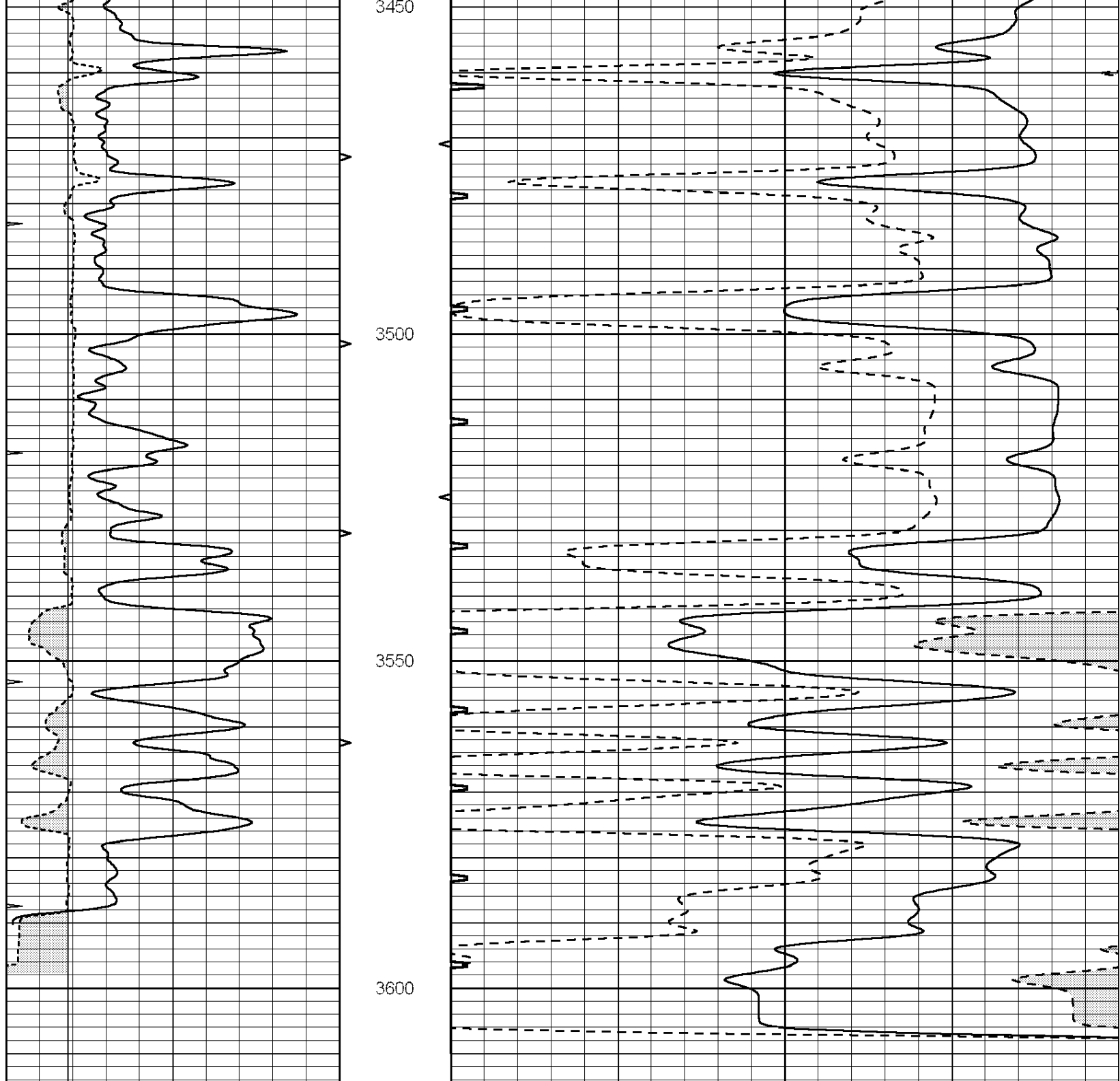
SUPERIOR  
Hays,  
Kansas

# REPEAT SECTION

Database File: 008495ddn.db  
 Dataset Pathname: pass4.1  
 Presentation Format: slt  
 Dataset Creation: Tue Mar 13 03:01:14 2012 by Calc Open-Cased 090629  
 Charted by: Depth in Feet scaled 1:240

0	GAMMA RAY (GAPI)	150	ABHV	140	DELTA TIME (usec/ft)	40	
6	MELCAL (in)	16	10 (ft3)	0	30	SONIC POROSITY (pu)	-10
0	MINMK	20	TBHV	0	ITT (msec)	20	
			0 (ft3)	10			





0	GAMMA RAY (GAPI)	150	ABHV	140	DELTA TIME (usec/ft)	40
6	MELCAL (in)	16	10 (ft3)	0 30	SONIC POROSITY (pu)	-10
0	MINMK	20	TBHV	0	ITT (msec)	20
			0 (ft3)	10		